

OPTISPLINT® by Digital Arches Step-by-Step Assembly

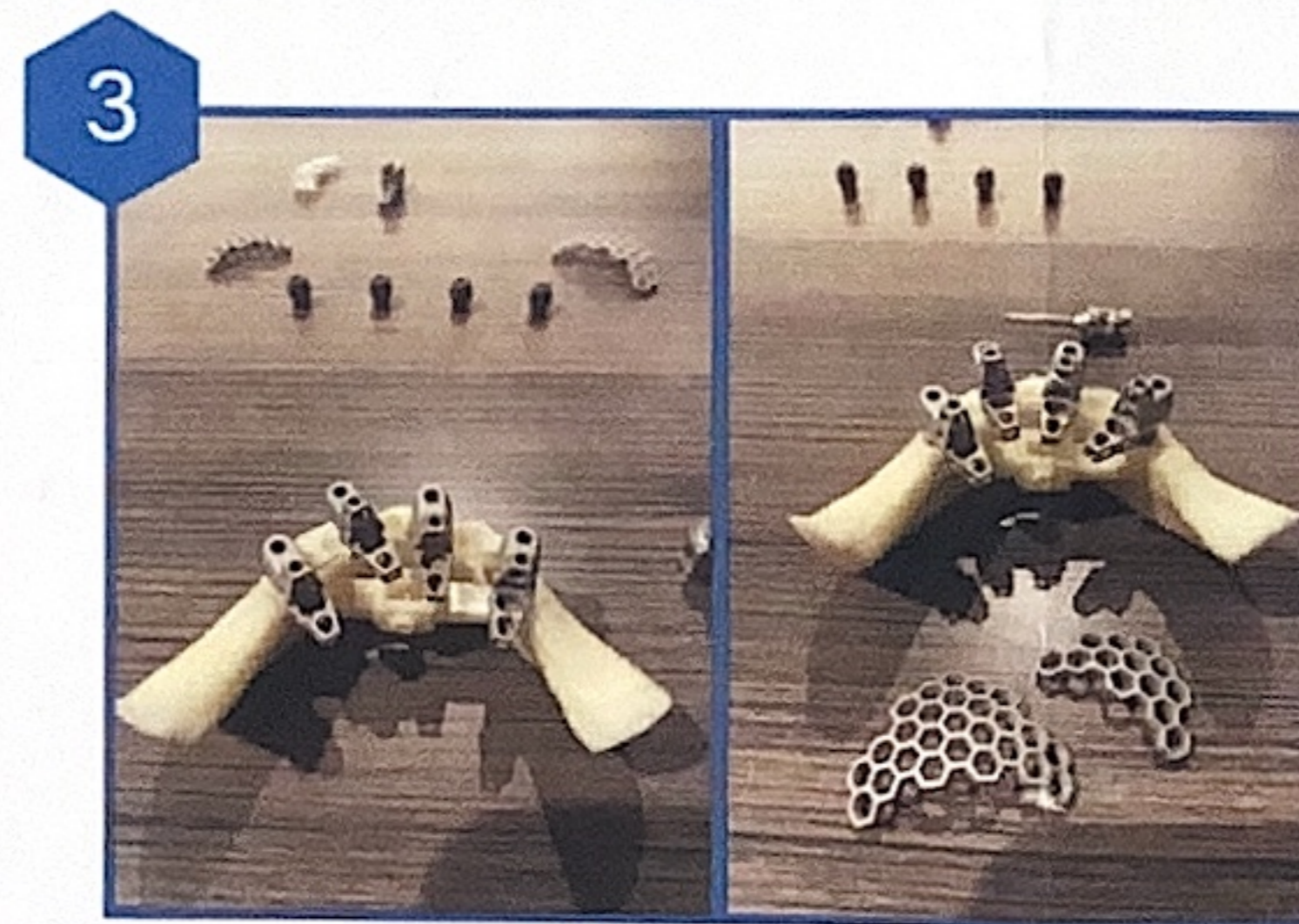
Place MUAs.



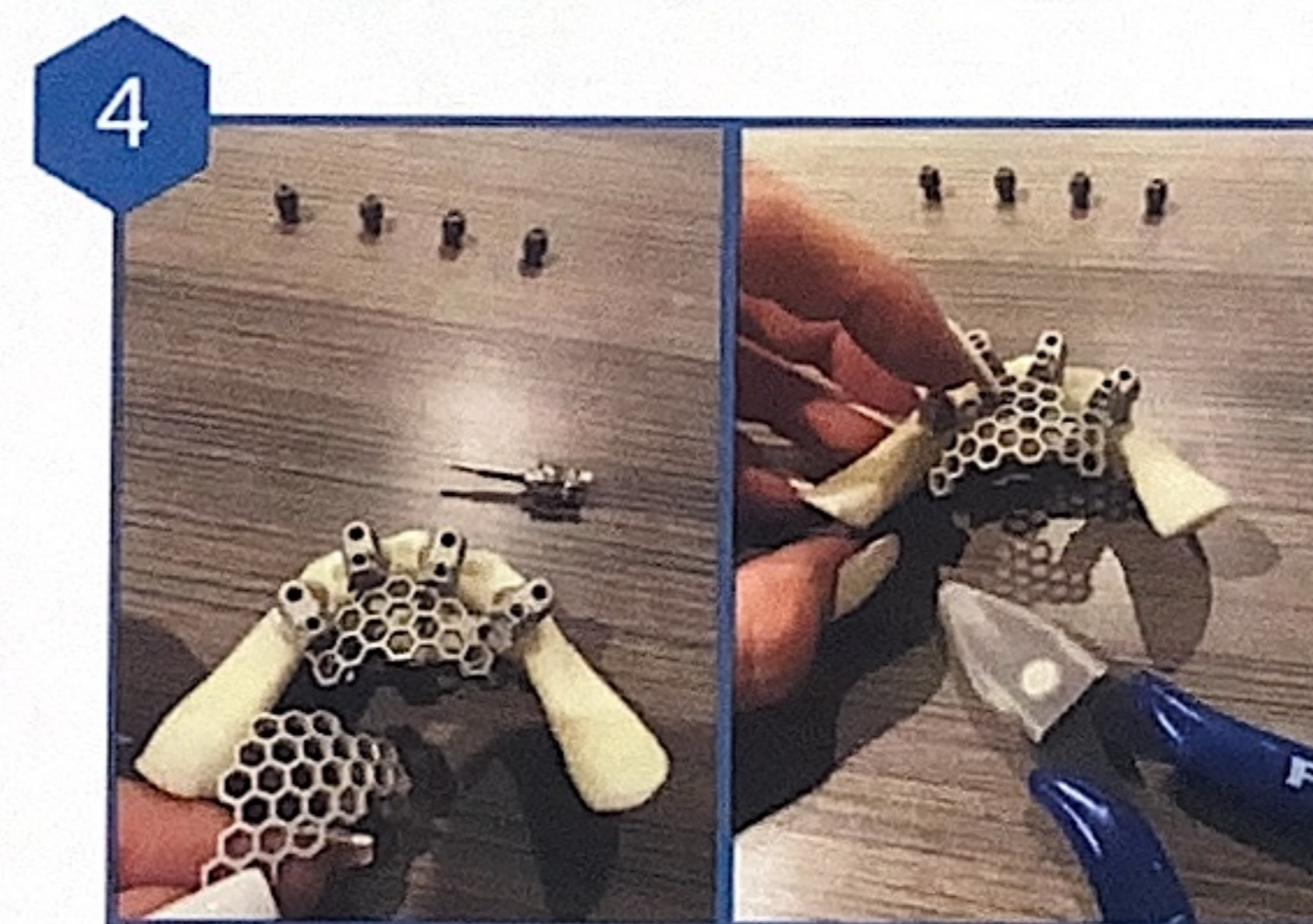
Place the screws in the OPTISPLINT® Scan Bodies and deliver to each MUA, lightly tighten.



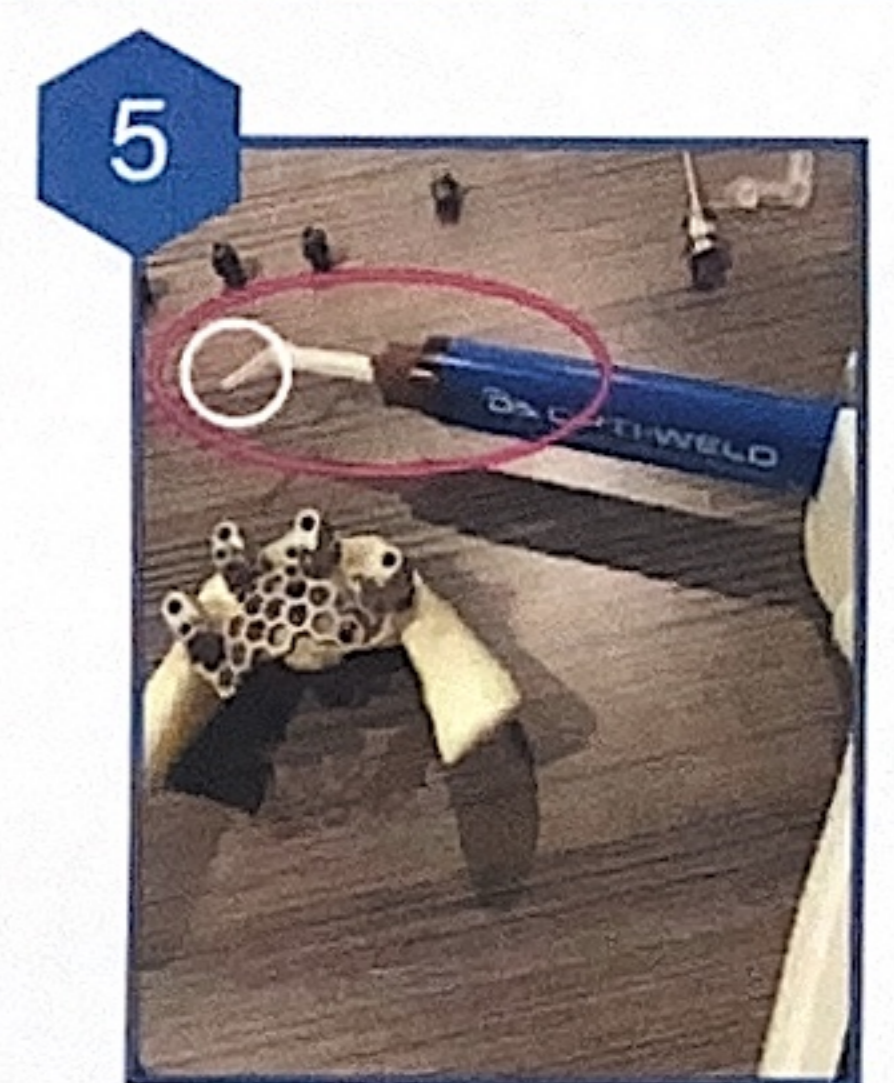
Align the scan body wings so that they point toward each other to make a platform for one of the two OPTISPLINT® FRAMES to rest on.



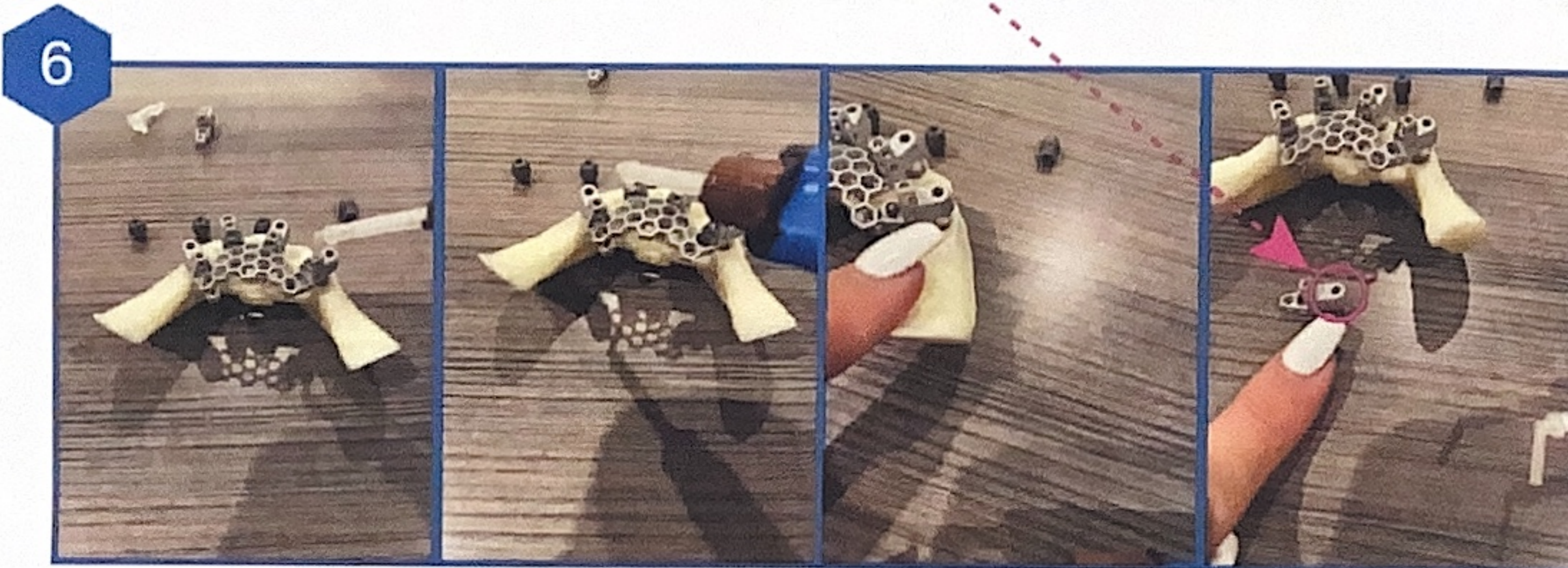
Choose the FRAME that best reaches all the Scan Body wings. You may trim the FRAME, if needed, with provided FRAME Clippers, or rotate the Scan Bodies as needed - finish hand tightening the screws.



Load OPTIWELD(ER) gun with OPTIWELD cartridge & attach the dispensing tip with the small channel delivery component so that you can flow material onto the FRAME & down into the chimneys.



Flow material through the chimney and onto the wing & FRAME for each Scan Body. Cure with light. Make sure you don't get material on the actual scan portion of the sandblasted Scan Body.

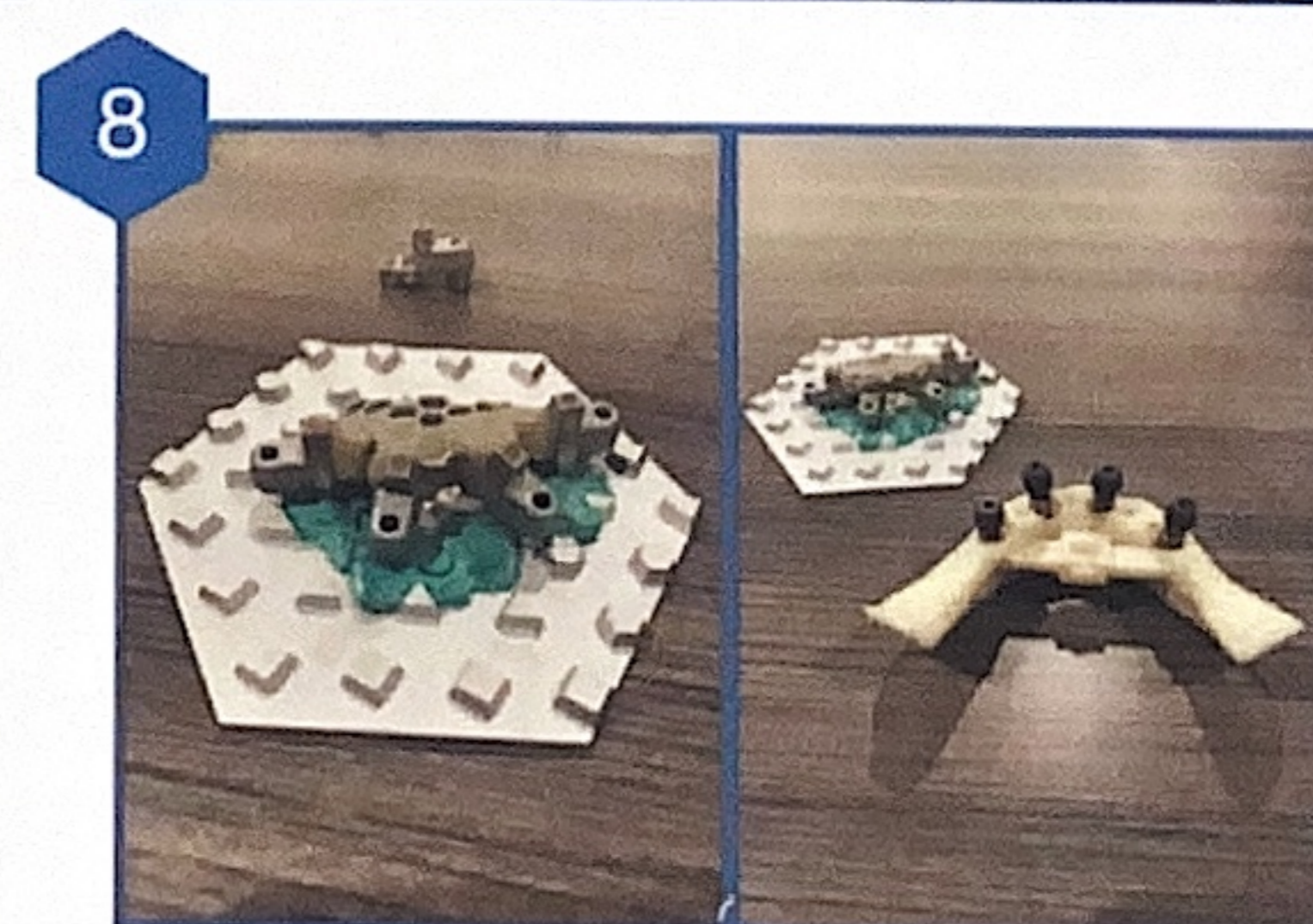


Once each Scan Body has been locked to the FRAME, unscrew and remove from mouth.



Place the luted OPTISPLINT® on the scan-plate and scan with IOS outside of the mouth (for temporary). Screw on the MUA OPTISPLINT® SCANCAPS™ to MUAs. Suture tissue (if at time of surgery), and scan tissue & MUA SCANCAPS™

Note:
the MUA SCANCAPS™ utilize the same screws you used with the OPTISPLINT® Scan Bodies



FOR FINAL ONLY

Snap ANALOG SCANCAPS™ into temporary. Scan intaglio surface. Send OPTISPLINT® to lab with the extra packet of ANALOG SCANCAPS™ for a lab desktop scan.

