



MOON WATER & CRYSTAL CLEARING TECHNIQUE



Crystals are powerful tools of frequency, able to amplify and hold the energy of intention. However, without clear intentions, crystals may hold onto past energies, potentially affecting your current energetic state. To ensure your crystals are working harmoniously with your personal energy field and intentions, it's important to regularly clear, program, and recharge them. Here is a simple yet profound method using Moon Water to do just that.

Creating Moon Water for Crystal Clearing

Full Moon Preparation: Prepare to make Moon Water by placing a jar of water on a windowsill with a clear view of the sky during a full moon or you may place a covered jar outside.

Set the Intention: As you set the water out, ask that it becomes a clearing chamber for crystals moving forward. This water will carry this intention for many years but should be recharged at least once a year under the same moon (or create a new batch of moon water!).

Place in Full Moon: Allow the water to sit under a full moon for 24 hours.

Intention Setting: Write your intention for the Moon Water on the jar to enhance its potency.

Clearing Your Crystals

Soaking Your Crystals: Place your water safe crystals into the Moon Water and allow them to soak for 12-24 hours. This process clears away any prior intention, energy signatures, or dense energies, including those from past owners or previous programming.

- **Grouping Crystals:** When soaking, group similar crystals together, such as clear quartz with clear quartz or rose quartz with rose quartz.

Sunlight Drying: After the crystals have soaked, remove them from the water and place them in direct sunlight (either outdoors or on a windowsill) to dry for another 12 hours.

Give a Blessing: As you remove each crystal from the water, perform a brief blessing or acknowledgment of the clearing process. Honor the crystal for its work and prepare it for the next step.



Setting the Intention for your Crystals

Connecting with the Crystal's Consciousness: Once the crystal has been cleared and dried, hold it in your hand and connect with its energy. Every crystal has its own consciousness and unique vibrational frequency.

Quiet your mind, feel into the stone, and ask if it is ready to accept a new intention. Wait for a clear “yes” or “no.”

If no, the stone is not ready or is not aligned with your intention, this simply means it may have a different purpose.

Some options for the stone if “no”:

- Store it in a sovereignty box with the intention to keep its energy neutral until its job is known.
- Possibly, the stone is intended to be gifted to someone or returned to the wild. Ask the stone what it desires.

If yes:

Intention Setting Process: When you receive a “yes,” proceed with the intention-setting process:

State the Intention: Clearly state your desired intention, such as being a protection crystal, an altar stone, or a tool for forgiveness, etc.

Heart and Breath Connection: Hold the crystal close to your heart, filling it with your intention. Breathe deeply and exhale your intention into the crystal. Visualize wrapping it in a cocoon of light from your heart and hands, infusing it with the frequency of love and purpose.

Once this process is complete, the intention is set, and the crystal will work with you to manifest this energy.

Setting the Intention for your Crystals

When working with crystals, it's essential to program them with intention, so they align with your energy and the purpose you wish them to serve. Here are a few examples of how you can work with crystals in different ways:

- **Altar Stones:** Crystals used on your altar should be programmed with the specific purpose of the altar itself, whether it's for protection, healing, or spiritual connection. Infuse them with your intention to amplify the energy of your sacred space.
- **Protection Stones:** For crystals that you intend to use for protection—whether for your home, your aura, or any space—ask the crystal to hold and radiate that protective energy. Setting a clear intention allows the crystal to become a strong, protective ally.
- **Purposeful Crystals:** Take the time to connect with each crystal in your collection and ask what it brings to you and your spiritual practice. If a crystal no longer supports your journey of abundance, love, or spiritual expansion, honor its path and pass it on to someone who may benefit from its energy. and your True Self.

Setting the Intention for your Crystals continued...

Crystals that have not been programmed will hold their natural frequencies or retain energy from previous owners or environments. By regularly programming and clearing your crystals, you ensure that they are aligned with the energies of love, healing, and spiritual expansion.

This Moon Water and

Crystal Intention Setting Method is a powerful tool to keep your spiritual tools clear, vibrant, and energetically aligned with your highest vibration. Use it regularly to ensure your crystals are ready to support you on your path of growth and transformation.

For more guidance on working with crystals and expanding your spiritual practice, visit www.serraphine.com to explore courses, resources, and offerings designed to help you deepen your connection to the energy world and your True Self.

Crystal Safety

Crystals with a Mohs hardness of 5 or below should not be placed in water, as they may dissolve, crack, or become damaged over time. Additionally, even some harder crystals should be kept out of water, particularly those containing minerals that can rust or release toxins. Always check the properties of your crystals before cleansing them in water to ensure their safety and longevity.

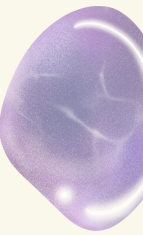
Hard Crystals that are Safe in Water:

Agate
Amethyst
Aventurine
Bloodstone
Blue Quartz
Carnelian
Chalcedony



Chrysoprase
Citrine
Clear Quartz
Jasper
Labradorite (5 so on the fence)
Smoky Quartz

Snow Quartz
Onyx
Rose Quartz
Sardonyx
Tiger's Eye
Tourmaline (non-water soluble varieties)



Stones that can NOT be soaked in water:

Amazonite
Amber
Angelite
Apatite
Aquamarine
Azurite
Black Tourmaline
Calcite
Celestine
Celestite
Chrysocolla
Desert Rose



Fire Opal
Fluorite
Gypsum
Halite
Hematite
Imperial Topaz
Jasper
Kunzite
Kyanite
Labradorite
Lapis Lazuli
Lepidolite



Malachite (toxic in water!)

Moonstone
Pyrite
Red Coral
Ruby
Selenite
Seraphinite
Talc
Turquoise
Unakite
Any crystal containing Copper!

