



Rumbleseat Review

December 2020

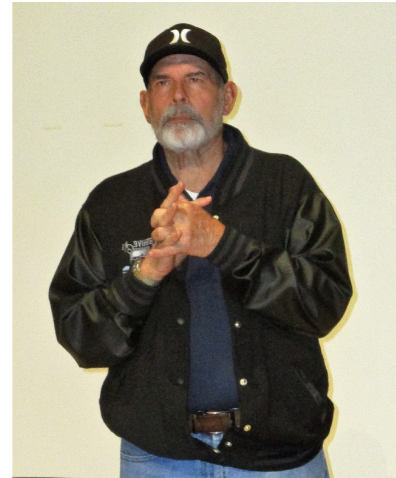


Beehive A's - The Model A Club of North America

The President's Message

This is my last President's Message and as such I approach this with mixed feelings. It has certainly been a challenging and unusual year but in many ways it has also been one of the most rewarding, from the "COVID" inspired "drive-by car shows" at the long term care facilities to food donations, tours and a very limited number of car shows.

We started the year with great optimism and unfortunately by March of 2020 we began to see the long term impact on us, our activities and the country. Unfortunately I think that masks and references to masks will be forever in our lexicon and may be in use for sometime to come. In spite of all of the challenges it has been a wonderful year and I would like to thank all of the officers and members for their positive attitudes, support and never failing optimism.



The 2020 December Banquet

The change of the Beehive A's leadership occurred with the passing of the 'Steering Wheel' from Rick Berry to Dennis Thompson as our new club President for the year 2021.

Because of the conditions that exist as a result of the current pandemic we had a smaller than usual crowd with only 30 people attending but we still had a good time. Only one couple, Rudy and Karen

Eilander/Stoker were intrepid enough to brave the elements and drive their Model A to the banquet. Two of our sponsors, Bratton's Antique Auto Parts and Mitchell provided prizes for our raffle and those were supplemented by contributions from club members Rudy and Karen Eilander/Stoker, Dennis and Jerri Thompson, and Roy and Mary Wheelwright. We had the opportunity to enjoy good company, good food and close out the year in style. The Board and I personally would like to thank everyone for their support, energy and enthusiasm. ***Rick Berry***



Thanksgiving 2020

The pandemic and the circumstances that have developed as a result make the need for food donations even greater this year. Thanks to the generosity of the members of the Beehive A's for their donations of non-perishable food items for the Ogden Food Bank the club donated 227 pounds of non-perishable food items. On Friday, November 23rd, 2020 nine club members (Rick Gibson his wife Carolyn, Rudy and Karen Eilander, Dennis Thompson, Craig and Jo Berry and Rick and Barbara Berry) in four Model A's made a delivery to the Catholic Community Services (CCS) Food Bank.

There is a desperate need for food so they can fill the needs of the community, and our club has contributed to help fill that need. Thanks again to all for your donations and thanks so much for supporting our community!

Rick Berry



The Impromptu Mini Tour...

...happened unexpectedly Saturday November 5th when Randy/Kathy Christiansen, Richard Hildreth, Dennis/Jeri Thompson left and ended up at the Milton cemetery. They then ventured over to Morgan and had a social distance lunch at J's drive in. The weather was perfect and all had an excellent ride. *Dennis Thompson*



The Black Friday Tour

Here is a picture of the crew that went on the Black Friday tour. We had a great breakfast at Ramblin



Roads café. Afterwards Randy Ropelato led us on a tour of the back roads of western Weber County. In this picture we are at a Sinclair in Hooper. Rick and Barbara Berry are missing from this picture but were at the breakfast. *Dennis Thompson*

Pictures here provided by Rick/Barbara Berry and Dennis Thompson

Beehive A's Northern Utah		
2020 Officers	A MAFCA Chapter:	
President:	Rick Berry	801-645-8482
Vice Pres.:	Rudi Eilander	801-668-7195
Pres. Elect:	Dennis Thompson	801-510-5837
Treasurer:	Jim Brown	801-497-6594
Newsletter:	Rich Kotter	801-782-7886
MAFCA Club Reporter:		
	Randy Christiansen	801-452-3392

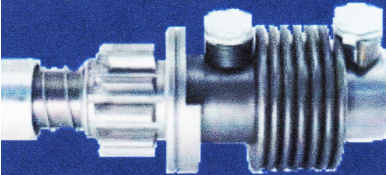


PS/Quote: “My train of thought derailed. There were no survivors.”

Tech Talks from MAFCA

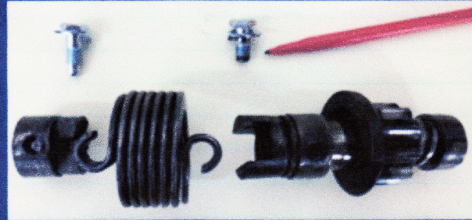
Jim's Technical Tip by Jim Cannon

Installing the Starter "Bendix Drive"



The small Bendix Drive gear that's bolted to the starter motor puts up with a lot of use (and abuse when you forget to retard the spark before starting). Eventually you will be working on yours and I have a tip for you about installing it back on the starter shaft.

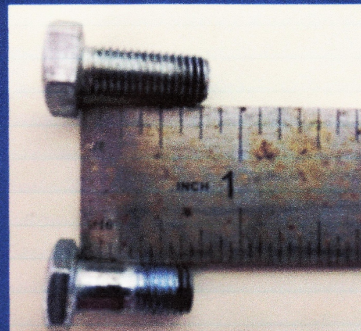
The Bendix is bolted to the shaft with 2 special bolts and lock washers, as shown in the photo below. One bolt has a specially-shaped end that goes down into a hole in the starter shaft. This is critical, to lock the Bendix to the shaft; do not substitute a plain bolt for this.



The other bolt is "special" only because it is only 11/16" long. This allows the bolt to lock the spring in place, without having the bolt actually touch the starter shaft. Don't be tempted to use a 3/4" long bolt instead of the correct shorter one. See the comparison photo of a 3/4" bolt and the correct bolt.



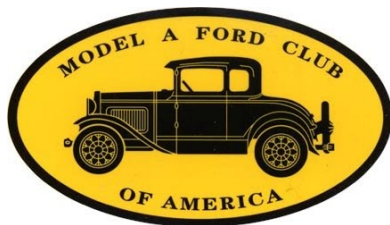
write Frisco. illustrationsOf.com/89401



When this longer bolt is used, it presses against the starter shaft when tight and it messes up the Bendix operation.

Don't forget to install the half-moon shaped Woodruff key in the shaft before slipping the drive on the shaft. You may also use 2 spring clips (optional). Be sure to lock the bolts down tight by bending the ear of the special lock washer up against the bolt head. If you don't, these bolts will work loose and fly out of the starter drive.

I carry a spare Bendix spring (they are known to break) and a set of these special bolts and lock washers with me in my parts kit on tours. If I don't need them, someone traveling with us might. This will help quickly get them back on the road to



GASOLINE SEDIMENT BOWL

Have you ever installed a new glass sediment bowl assembly or removed the glass bowl to clean out the sediment and found that it leaked after you put it back together, even though you used a new cork gasket? This is not an uncommon experience. The problem lies in the fact that the cork gaskets sold today are porous and the gasoline filters right through them. I recently encountered this problem on a customer's brand new assembly.

By removing the glass bowl and doing the following I was able to stop the leak.

Sit the glass bowl upright on a level surface; then fit the filter screen in the recess of the bowl. Using a little adhesive like silicone cement will help to keep it in place.

Now apply silicone adhesive either blue or clear to all surfaces of the cork gasket. Place the gasket on top of the glass bowl containing the filter screen. Wait a minute or two, then carefully install the assembly in the correct place in the filter. Adjust the bale and tighten.

Patent Cures



Red E. Power

Mm MITCHELL
GEAR - SPLITTER

Sue Steve Cyndi
Mitchell

Mitchell MFG.
530-458-4500
800-859-2088

VINTAGE CAR
OVERDRIVES/UNDERDRIVES

P.O. Box 925 1157 Parker St. Colusa, CA 95932

BRATTON'S

ANTIQUÉ AUTO PARTS



800-255-1929 Phone
www.brattons.com
800-774-1930 Fax
1606 Back Acre Circle
Mount Airy, MD 21771

Your source for Quality Model A Ford Parts since 1976

