



Rumble Seat Review

January 2025



Beehive A's—The Model A Club of Northern Utah



Beehive A's is a Chapter of the Model A Ford Club of America

Message from the President

Happy New Year and Welcome to 2025!!!

I hope and pray that this year will be a good year for all of you and your families.

Looking back to 2024, there were a lot of ups and downs. But as we look forward to 2025, I hope there will be a lot that the club can achieve and enjoy. Please feel free to contact any of the board members with ideas or concerns that you have.

The board had their first meeting of the year. We have a great board this year. They are very excited to share the new changes and fun ideas that we have come up with. Everyone is eager to make this a fun year for the club members. I want to thank all the board members for serving with me. I know that I couldn't do all this on my own. Thank you to the club members for having the confidence to choose me to serve in this position.

Did you know??

- By February 4, 1929, one million Model As had been sold, and by July 24, two million.
- In March 1930, Model A sales hit three million, and there were nine body styles available.
- Model A production ended in March 1932, after 4,858,644 had been made in all body styles.
- Prices for the Model A ranged from \$385 for a roadster to \$1,400 for the town car.
- Model A was the first Ford to use the standard set of driver controls with conventional clutch and brake pedals, throttle, and gearshift.

Thank you again for all of your support.

Heidi Pitkin

2025 Officers

President:

Heidi Pitkin.....itsthepits5@gmail.com

President Elect:

Chaz Walker....email@chaz.name

Vice President:

Keb Leete....kleete@comcast.com

Treasurer/Secretary:

Jim Brown.....na7gjim@msn.com

Historian:

Bill Wiser....bill.wiser@wiservision.com

Newsletter Editor:

Henry Dominguez....dominguezh2@aol.com

MAFCA Representative:

Brian Gough

Past President:

Ron Lucero

Cover photo: Former president, Ron Lucero, handing over the coveted "President's Steering Wheel" to new president Heidi Pitkin at the Club's Christmas Party on December 17th.

Next Meeting:

Monday, January 13, 2025 at 7:00 PM

Pleasant Valley Library

5568 South Adams Ave

Washington Terrace, Utah

JANUARY BIRTHDAYS

Mike Bachman

Randy Call

Mary Clausse

Kathy Christiansen

Randy Christiansen

Henry Dominguez

Pamela Hall

Chete Leete

Dave Spinden

Phillip Steiger

CARS & PARTS

Woody Bird Jr., who lives in Pleasant Grove, Utah, has many Model A parts for sale, such as motors, transmissions, intake and exhaust manifolds, front and rear springs, shifters, wheels, even and a Model T chassis. His phone is 385-419-8805.

Mike Bachman has two 1930 Model A chassis for sale. Please call him at 801-430-0583.

Steve Nailer is liquidating cars. Please reach out to Dave Spinden for more information. His phone number is: 801-745-5327

Model A assembly line, 1928. Note the cab chassis in the foreground..., it is right-hand-drive.
(From the Collections of The Henry Ford)



In Memorium



Long-time Club member, Louise Sessions, passed away last month..., on Christmas Day. Born on June 8, 1936, in Panguitch, Utah, she lived 88 wonderful years. About half of those years she was a member of our Model A club, and she loved her 1929 Model A pickup.

She also loved the unique Christmas yard decoration modeled after that pickup, a picture of which is shown below. Here's the story about that, told in her grandson's, Club member Chaz Walker, own words:

"When Steve Sessions inherited his Uncle Wilford's dilapidated 1929 Model A Ford pickup," Chaz explains, "he knew he had a special project on his hands. He poured countless hours into restoring the truck to its former glory, a tribute to his uncle, and affectionately named it "Wilford." But Wilford's story didn't stop there. Steve's friend Bill Ebert, a skilled welder, crafted a whimsical Christmas yard decoration: a true-to-scale outline replica of the beloved truck. Steve then added twinkling lights, including some, cleverly placed on the wheels, to create the illusion of motion. Every Christmas, "Wilford" takes center stage in Steve's yard, a beacon of holiday cheer and a testament to the enduring memory of his uncle. This unique display has become a beloved local tradition, capturing the hearts of many in the community."

Thanks, Chaz. That's a great story, and thanks for sharing it with us.
Louise will be missed.

"Wilford" out front of the Sessions' home. This as Louise's favorite Christmas yard decoration. It's a Model A pickup, of course, replete with Santa driving and gifts in the bed.



The Beehive A's 43rd Annual CHRISTMAS PARTY!

As always, our annual Christmas party was very successful and a lot of fun! And kudos go to Jim Brown for setting it up for the umpteenth time! Thanks Jim! And thanks to Keb Leete for supplying these photos!

After the invocation, past president Ron Lucero passed the gavel and the “President’s Steering Wheel” over to new president Heidi Pitkin. “Out with the old and in with the new!” as the saying goes. (Not that Ron is old, mind you!)

After supper, a raffle was held, where club members won everything from gas cans to tools to books. And after that, more gifts were distributed through the always fun White Elephant gift exchange. At the end of that, it was time to leave, and everybody wished everybody else a Merry Christmas and Happy New Year.

The only drawback to the annual Christmas party is that they seem to come around WAY TOO QUICKLY!



Members enjoying a delicious Christmas dinner at the Timbermine Restaurant...



...and more members...



...and more members.



Bill Wiser handing out gifts to the lucky winners.

Edsel Ford's Grand Estate: Gaukler Pointe

This is Edsel and Eleanor Ford's magnificent mansion, which they called Gaukler Pointe, after the peninsula of land that juts out into Lake St. Clare. That piece of land is almost 90 acres in size, and the house is 30,000 square feet in size and consists of 60 rooms.

While the mansion is expansive, it looks warm and cozy and not at all ostentatious, and that is exactly what the Edsel Fords wanted. The couple had traveled to Europe many times before starting their home, and they loved the architecture of the Cotswold Region in England. They told long-time Ford architect, Albert Kahn, to design them a home along the lines of a Cotswold cottage.

The magnificent home was completed in 1929 (this is what Model A money could buy), and Edsel lived there until his death in 1943, and Eleanor lived there another 33 years. In her will, Eleanor set her home up as a museum and left \$10 million for its upkeep. Today, almost 50 years after her death, the home is still a museum and is open year-around for tours.



The front and main entrance way of the Edsel Ford mansion.



This is a view of a typical section of the Cotswold Region in England. Notice how similar Edsel's mansion is to this quaint articture.



Entry way of the mansion. Visitors entering the large door were met with an expansive tile floor, warm Persian rugs, and a medieval banister.

The largest room at Gaukler Pointe was the gallery, located at the northwest corner of the house. While expansive, it looks comfortable and cozy, and resembles an English baronial hall. The Fords used this room for family parties, especially at Christmastime, to play games and to watch first-run movies. Hanging from the ceiling are three early 18th century Dutch chandeliers, and lying on the floor are 17th century Persian rugs.



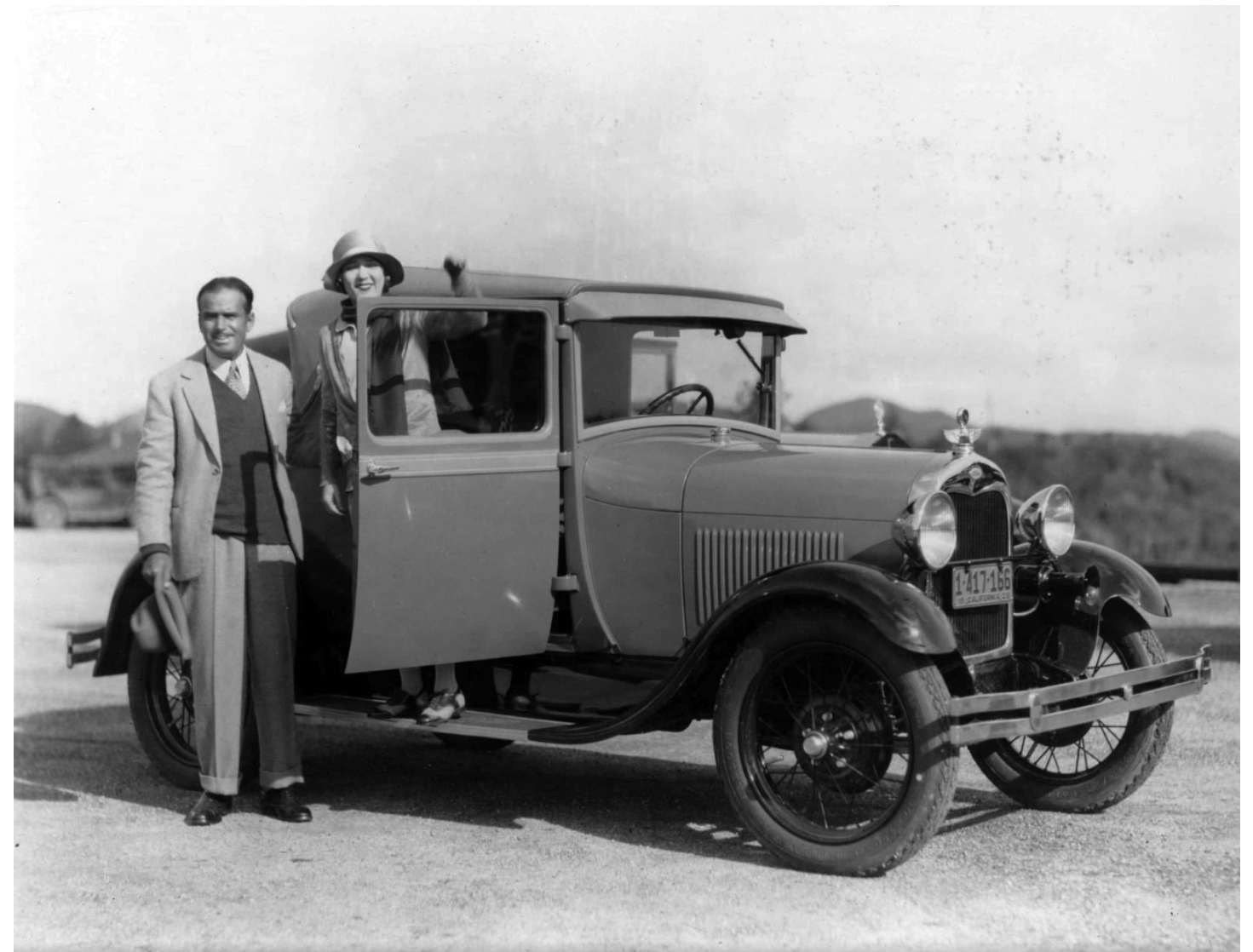
Edsel's study. It is not a large room, but it is cozy and elegant. Most of the walls are covered with wood panels carved in 1585. The wall to the left (out of view) is covered in genuine leather, and hanging on it are numerous photographs and memorabilia important to Edsel; among them a photograph of actors Mary Pickford and Douglas Fairbanks standing in front of their 1928 Model A Sport Coupe, which Edsel had given to them.



Aerial view of Edsel Ford's mansion under construction, 1927. The mansion proper is practically complete, but it would take another two years to custom fit the various antique architectural elements, such as carved fireplaces and wood paneling, that Edsel and Eleanor had acquired in Europe. The building in the upper left is not another mansion, but the gate house to Edsel's property! This is where the chauffeur lived and where some of Edsel's cars were kept. This view is looking north, so from Edsel's back porch, one can see Canada. Yes, this is a geographical anomaly, where Canada is actually *south* of the United States! (From the Collections of The Henry Ford)



The Edsel Ford family posing on the patio steps of Gaukler Pointe, circa 1938 (L-R): Edsel, Eleanor, Henry II, Benson, Josephine, and William. Interestingly, and somewhat baffling, in this huge mansion, young Henry had his own bedroom suite, as did Josephine, but Benson and Willam shared a bedroom!
(From the Collections of The Henry Ford)



Actors Douglas Fairbanks and his wife Mary Pickford posing with the new 1928 Model A Sports Coupe that Edsel had given them. It was one of the very first Model As off the production line, and the two movie stars were delighted with it. "Mary uses new Ford in preference to all her other cars," telegraphed Fairbanks to Edsel. "It surpassed all of our expectations."

Sponsors

JENSEN *AUTO SERVICE*

Jensen Auto Service

3192 Midland Drive

Ogden, UT 84401

801-621-4252

<https://www.jensenautoservice.com>

Snyder's

ANTIQUE AUTO PARTS

