

# Assessment

Prev

[Introduction](#) • [Locations](#) • [Assessment](#)

[Instructions](#)

Average Monthly Bill

[Rates](#)

[Comparison](#)

Average Monthly Bill

\$ 99.24

Local Hourly Minimum Wage

\$ 13.65

Calculate

## Instructions

Enter a dollar amount that represents what a customer with average usage would pay. You can "play with" different amounts to see what the effects of increases might have on this segment of your customers.

Enter your local minimum wage. You can also "play with" this to see what effect an anticipated increase in the minimum wage would have on affordability for your customers.

## Hours Needed at Minimum Wage to Pay Average Monthly Bill

### Benchmark

Less than 4 hours  
Between 4-8 hours  
Greater than 8 hours

### Financial Impact

■ Low Cost Burden  
■ Mild Cost Burden  
■ High Cost Burden



Cost of Service as % of Lowest Quintile Income (LQI) ([Explain This](#))

**Benchmark**

Less than 1% of LQI

**Financial Impact**

Low Cost Burden

Between 1% - 2% of LQI



Mild Cost Burden

Greater than 2% of LQI



High Cost Burden

**EPA Residential Indicator** ([Explain This](#))**Benchmark**

Less than 1% of MHI

**Financial Impact**

Low Cost Burden

Between 1% - 2% of MHI

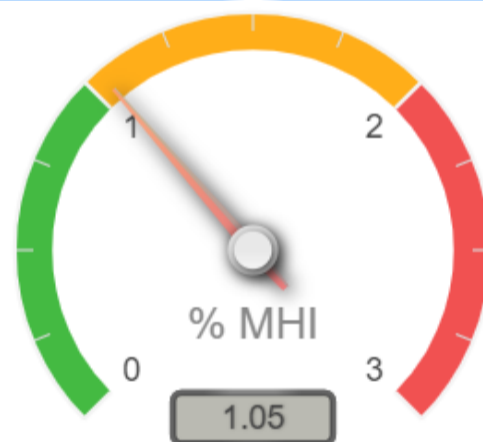


Mild Cost Burden

Greater than 2% of MHI



High Cost Burden

**Distribution of Customers by % of Income Spent on Water Bills** ([Explain This](#))

Income Bracket	Percent of Income Spent on Avg Monthly Bill	Percent of Community in Income Bracket
Less than \$10,000	23.86%	N/A
\$10,000 - \$14,999	9.53%	4.9%
\$15,000 - \$24,999	5.96%	N/A
\$25,000 - \$34,999	3.97%	2.2%
\$35,000 - \$49,999	2.8%	12.9%

Income Bracket	Percent of Income Spent on Avg Monthly Bill	Percent of Community in Income Bracket
\$50,000 - \$74,999	1.91%	3.9%
\$75,000 - \$99,999	1.36%	15.3%
\$100,000 - \$149,999	0.95%	35.1%
\$150,000 - \$199,999	0.68%	18.3%
\$200,000 or more	0.6%	7.5%

Distribution of Customers by % of Income Spent on Water Bills

