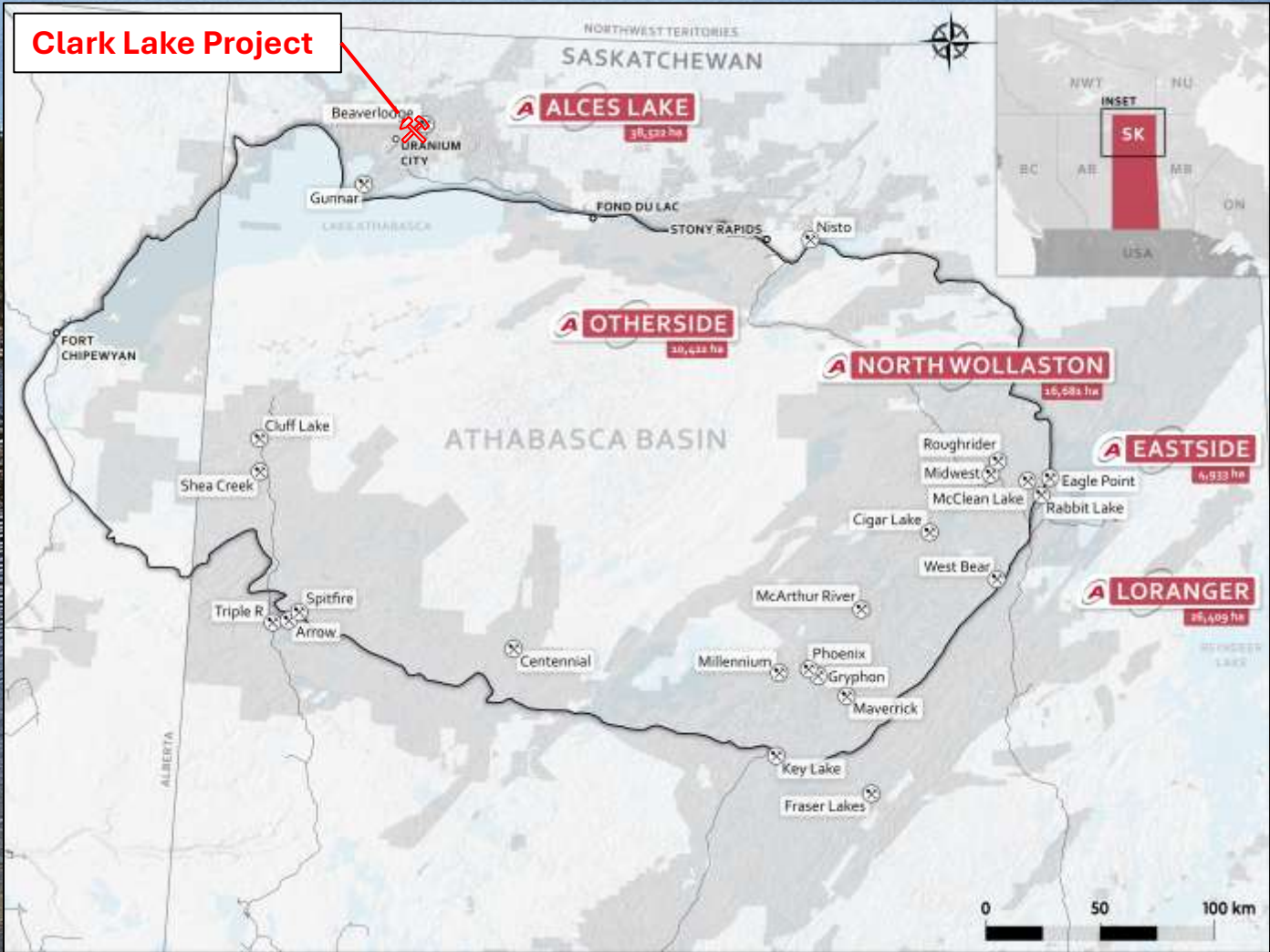




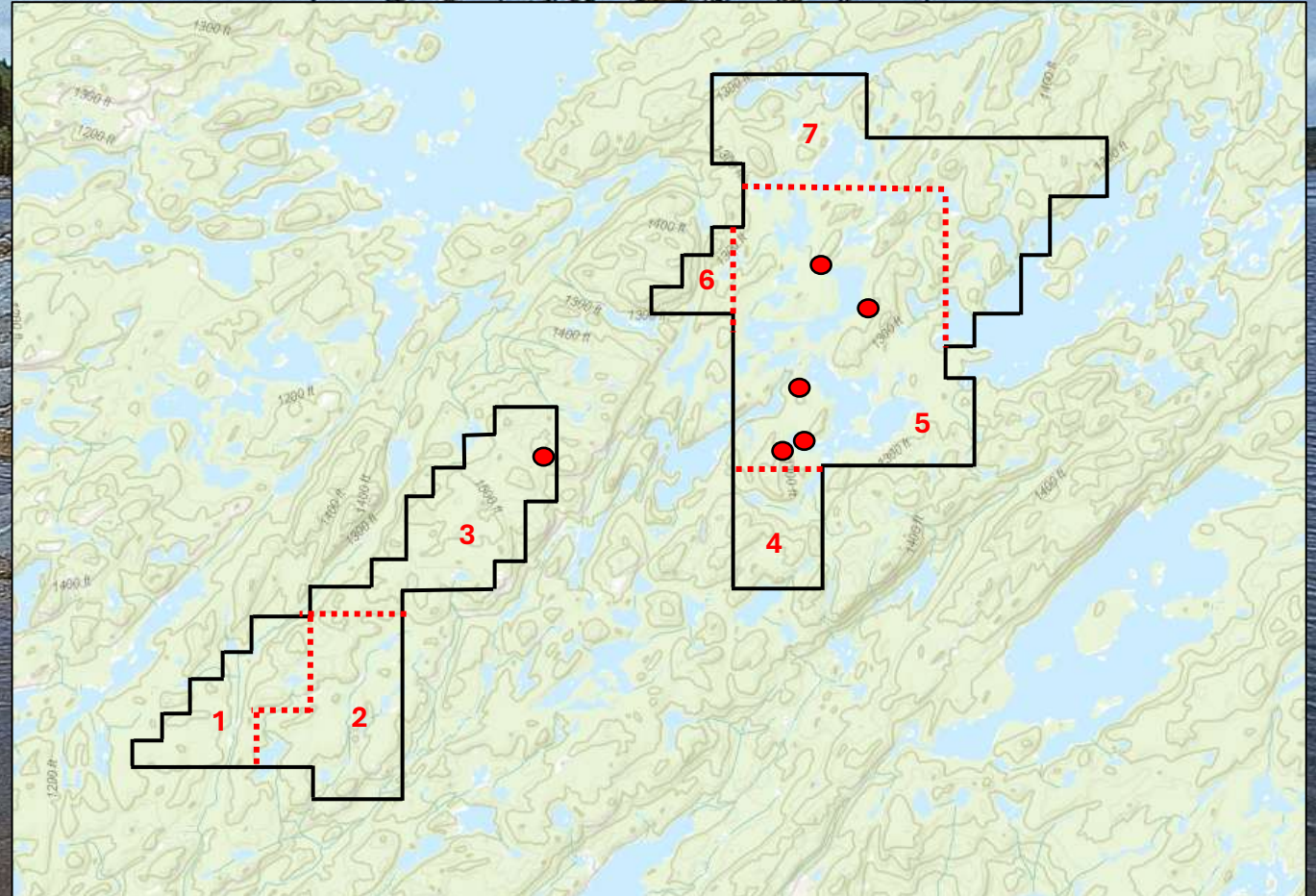
Clark Lake Uranium Project
Uranium City SK / Feb 2026



Located 8km North of Uranium City

Clark Lake Uranium Project

- **Up to 0.49% U₃O₈ over 0.9 m in historic trenching**
- **Hole no. 2, assayed 0.21% U₃O₈ over 12.2m**
- **54.6 g/t Au sampled with anomalies uranium**
- **Historic programs confirm uranium system**
- **6 historic showings**
- **7 claims / 3167 Hectares**



Goldfields Showing Zone 100 (SMDI 1479):

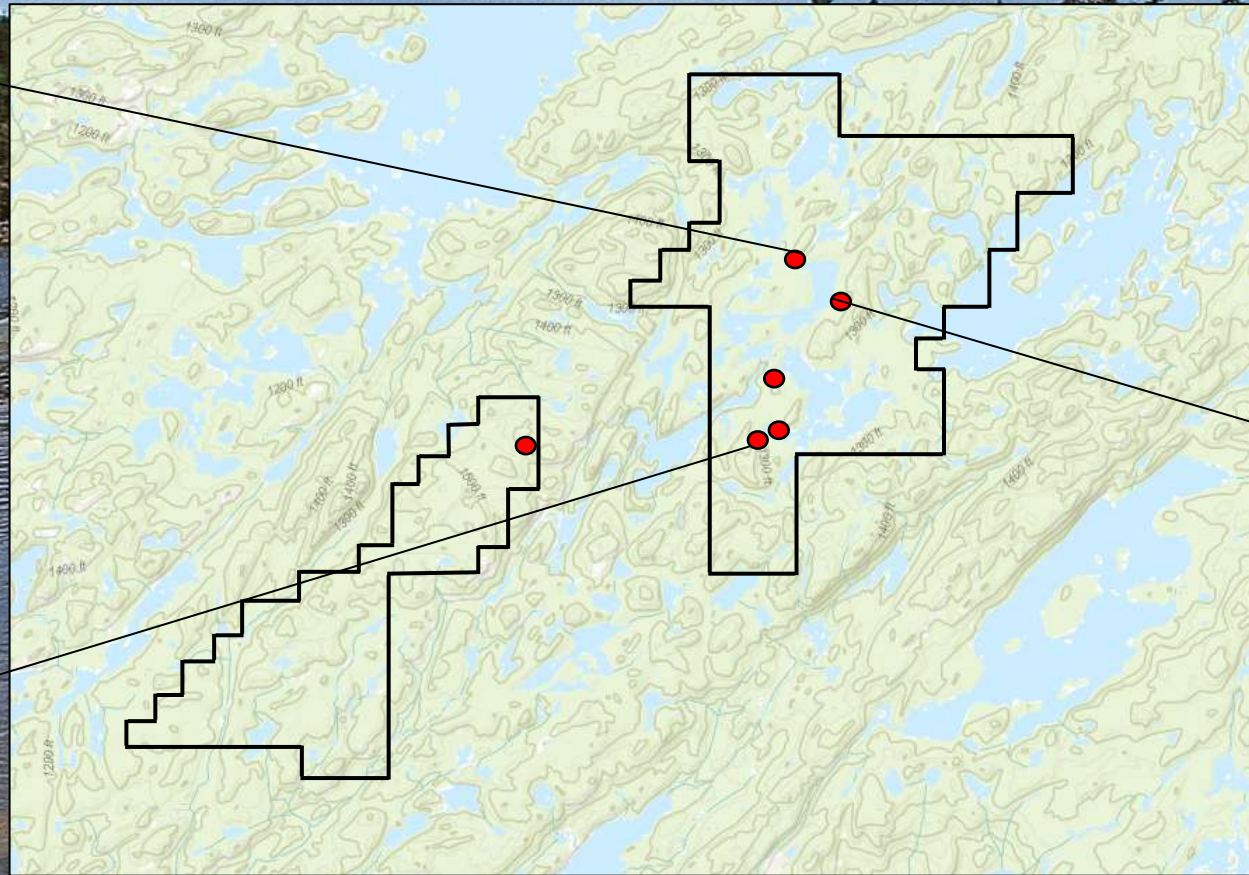
- Trenching yielding **0.16%** U3O8 over **1.8 m**.
- In several locations scintillometer readings up to **15,000 cps** were obtained.
- 2013 grab samples: **0.082%** U3O8, **0.148%** U3O8, **0.157%** U3O8, **0.045%** U3O8, **0.039%** U3O8.
- 2013 grab sample 85199 yielded **2.06 g/t Au** (SMDI 5745).

Goldfields Uranium Mines Ltd

DD-20 Uranium Zone, Tobe Uranium Mines Radiometric Anomalies (SMDI 2110):

- Hole no. 3 yielded the best intersection, **0.11%** U3O8 over **0.7 m**.
- A grab sample from one trench assayed **0.21%** U3O8.
- Hole no. 5-52 yielded **2.26%** U3O8 over **0.09 m**. Scintillometer values greater than **15,000 cps** were obtained from trench H.

Fosagao Explorations Ltd



Goldfields Showing 50-TT-75 (SMDI 1480):

- Thirteen trench samples returned an average of **0.266%** U3O8 over **1.2 m**.
- A **13.7 m** by **1.6 m** section returned an average of **0.26%** U3O8.
- A drill hole returned **0.202%** U3O8 over **2.2 m**.
- Pegmatite dyke is **91 m** in length and varies in width from **0.3 m** to **1.5 m**. Assay returned **0.05%** U3O8 over **0.6 m**.
- The highest assay obtained was **0.49%** U3O8 over **0.9 m** with **0.14 oz./ton Au** and **0.10 oz./ton Ag**.
- 2013 grab samples as follows: sample 85212 with an analysis of **0.010%** U3O8; and sample 85218 with **0.012%** U3O8.

Goldfields Uranium Mines Ltd

Historic Drilling and Samples Confirm Uranium System

Goldfields Uranium Showing 50-NN-72 (SMDI 1477):

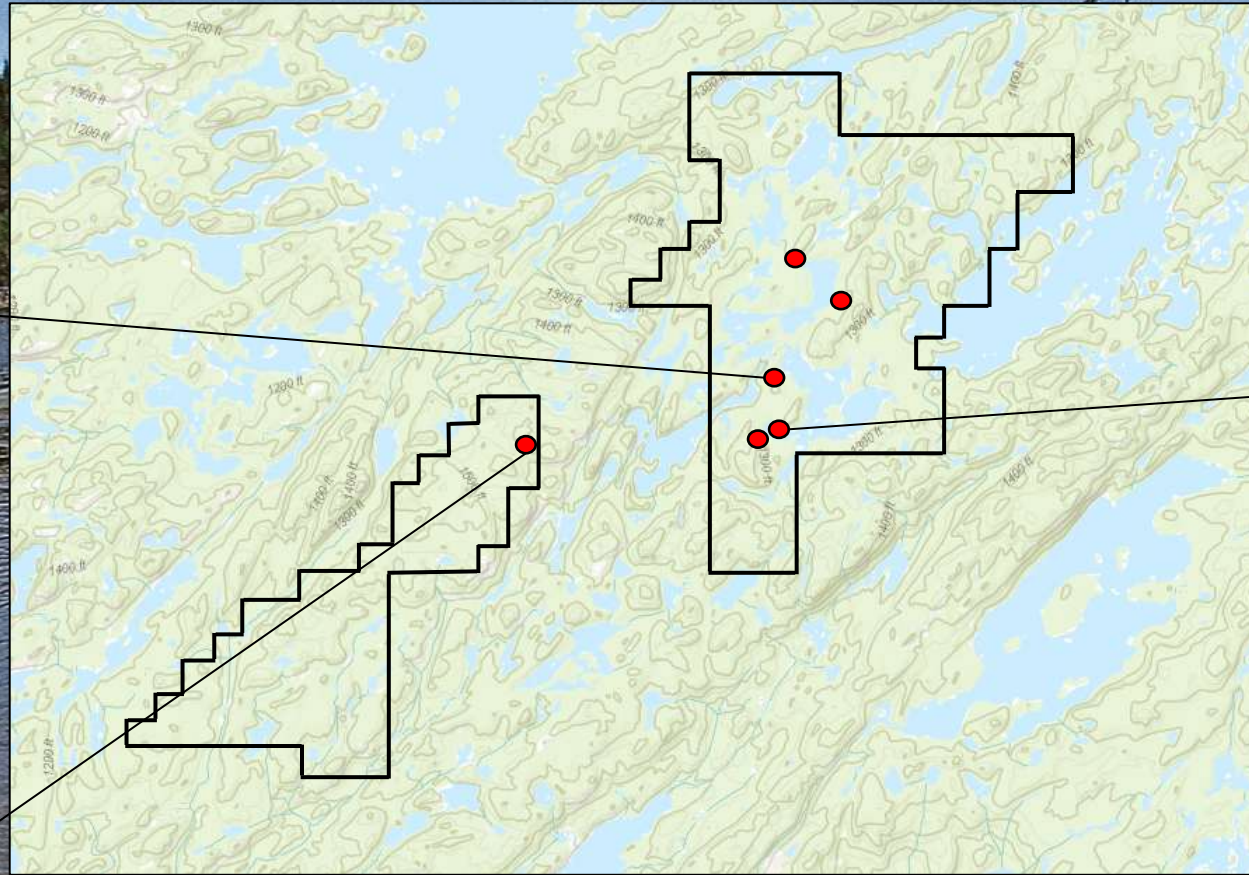
- The 72 Zone is hosted within the same metasedimentary sequence of rocks which host the **Verna and Bolger Deposits**.
- Consists of a intervals assaying **0.29% U3O8** over **1.0 ft** (DD 72-1).
- Four trenches have been dug and display high grade uranium mineralization with readings up to **5000 cps**.
- Intermittent radioactivity along the contact reached up to **12,000 cps**. The showing has a possible surface area of **350 ft by 100 ft**.

Goldfields Uranium Mines Ltd

Skeena Mines Uranium Showing No. 3 (SMDI 1475):

- A grab sample from a narrow fracture zone yielded **0.07% U3O8**

Skeena Silver Mines LTD

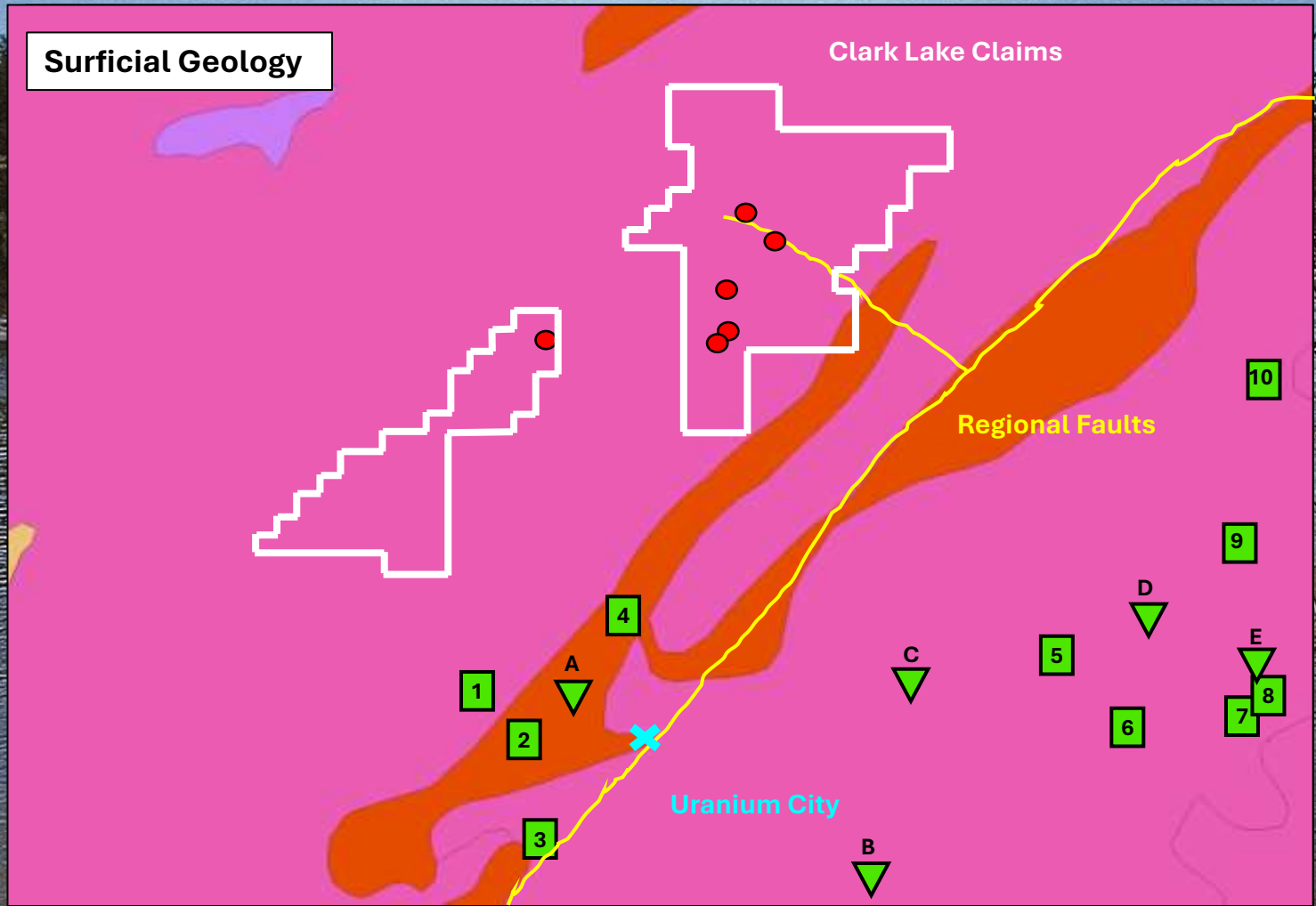


DD-20 Uranium Zone, COMP Uranium Zone (SMDI 1478):

- Fourteen drill holes with a best intersection yielded **0.11% U3O8** over **0.7 m**.
- A grab sample from one trench assayed **0.21% U3O8**.
- The showing has a strike length of **152.4 m**.
- Hole no. 2, assayed **0.21% U3O8** over **12.2m**.
- 2013 grab samples as follows: **0.051% U3O8**, **0.013% U3O8**, **0.010% U3O8**, **0.083% U3O8**, **0.025% U3O8**, **0.025% U3O8**, **0.011% U3O8**.
- 2013 grab samples as follows: **0.029% U3O8**, **0.021% U3O8**, **0.405% U3O8**, **0.04% U3O8**, **0.033% U3O8**.

New Hosco Mines Ltd. and Rix Athabasca Uranium Mines Ltd

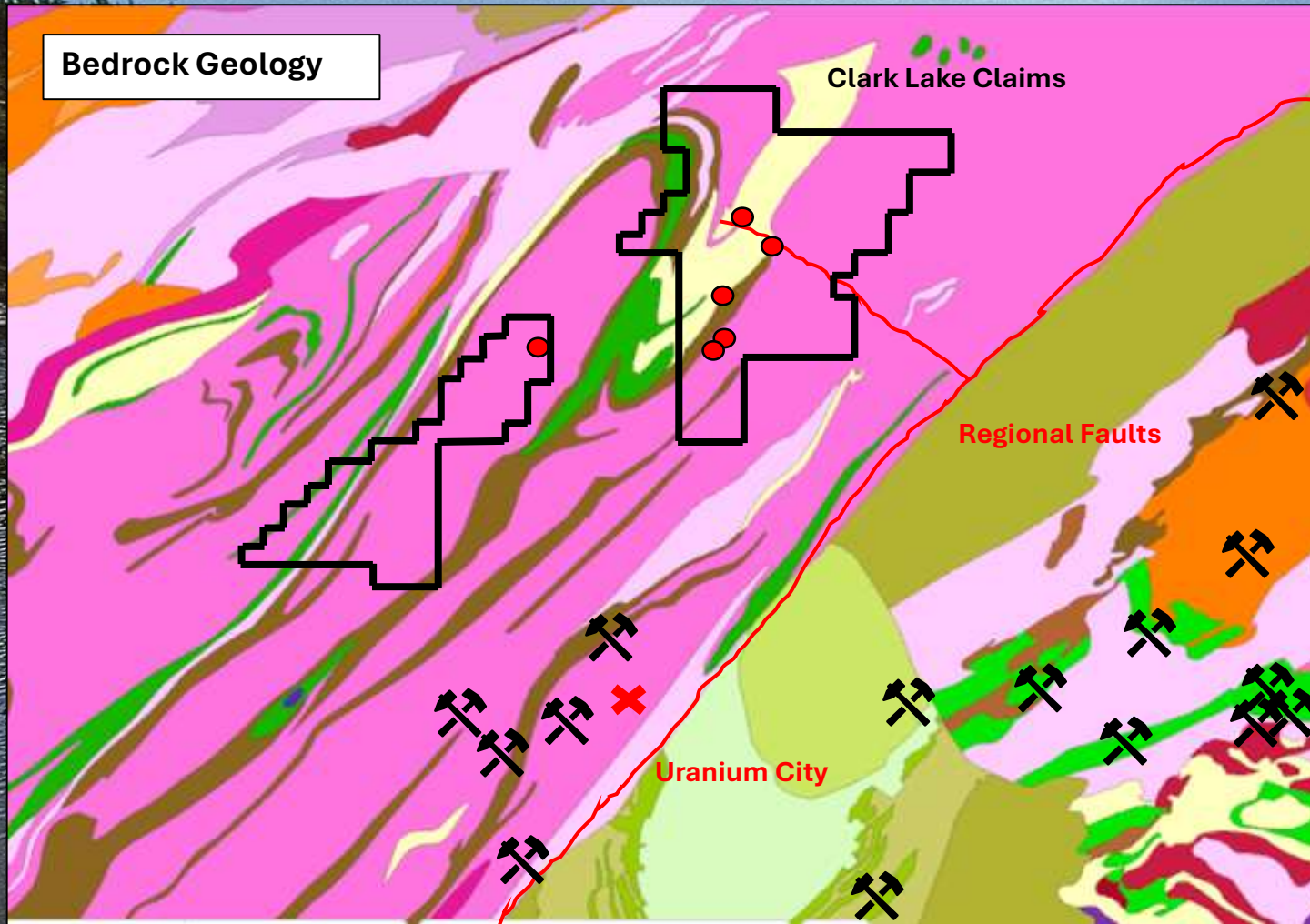
Historic Drilling and Samples Confirm Uranium System



- 1. Smitty Uranium Mine
- 2. Leonard Uranium Mine
- 3. Cinch Lake Uranium Mine
- 4. Cayzor Uranium Mine
- 5. Eagle-Ace Uranium Mine
- 6. ACE-FAY-VERNA Uranium Mines

- A. St. Michael Uranium Mine
- B. Pitch-Ore Uranium Mine
- C. (abc) Uranium Mine
- D. Beaverlodge Uranium Mine
- E. East Target Uranium Deposit

Near Past Producing Uranium Mines



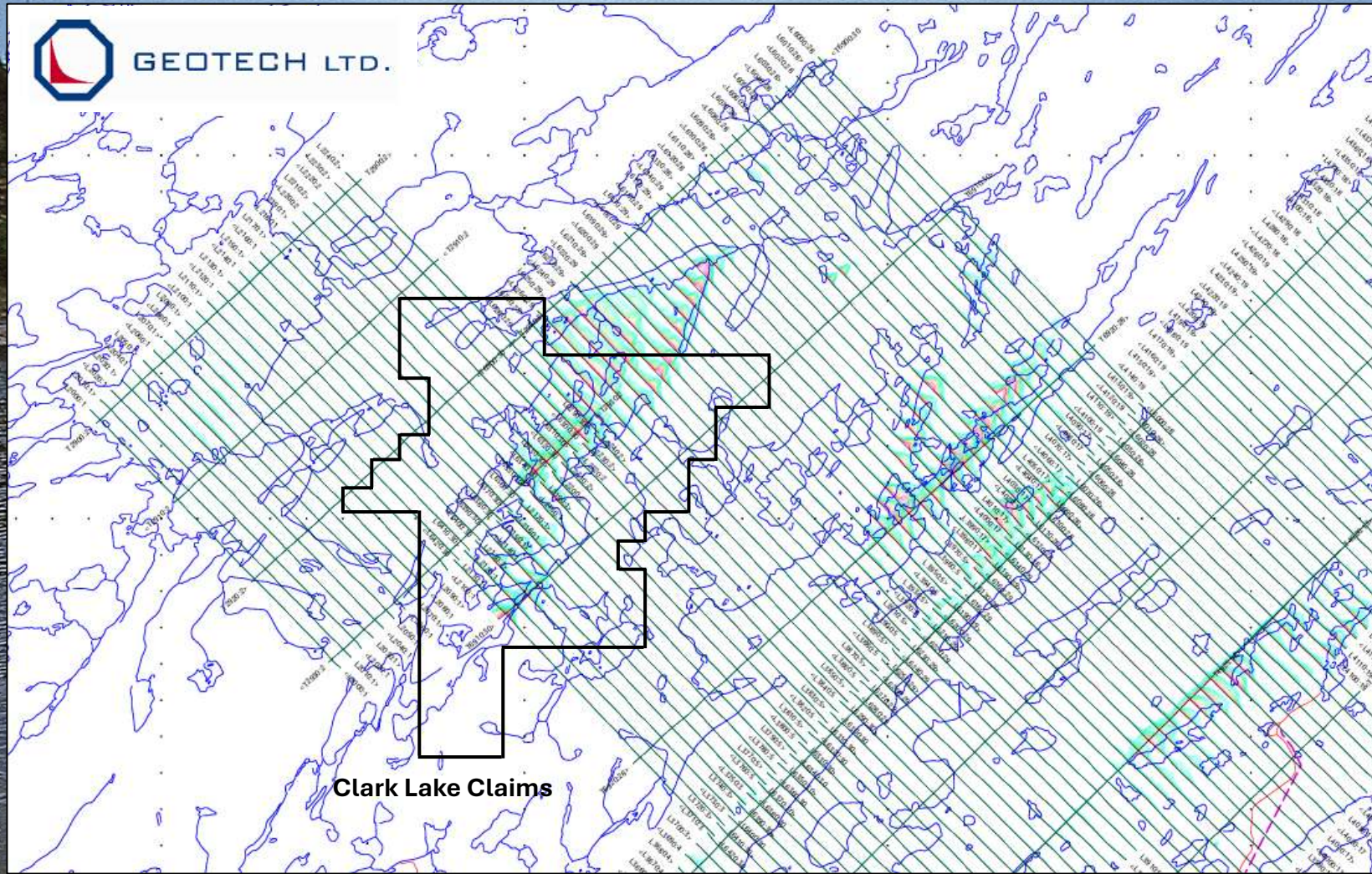
- Granitic to granodioritic orthogneiss
- Interlayered amphibolite and quartzite
- Quartzite
- Undifferentiated Murmac Bay Group

The granitic to granodioritic orthogneiss, interlayered amphibolite–quartzite, and quartzite near the northwest Athabasca Basin can help host uranium deposits by providing both **fluid pathways** and **chemical/structural traps**. Strong, brittle quartzite and orthogneiss tend to fracture and focus uranium-bearing fluids along faults and contacts, while the **amphibolite layers** add more reactive, locally reducing conditions that can trigger uranium precipitation where fluids slow down or mix at **shears, fractures, and lithologic boundaries**.

Regional Bedrock Geology

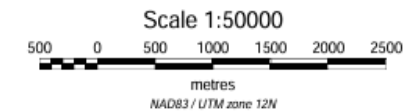
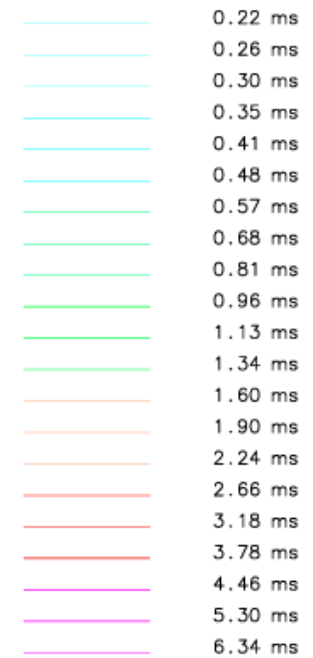


GEOTECH LTD.



Clark Lake Claims

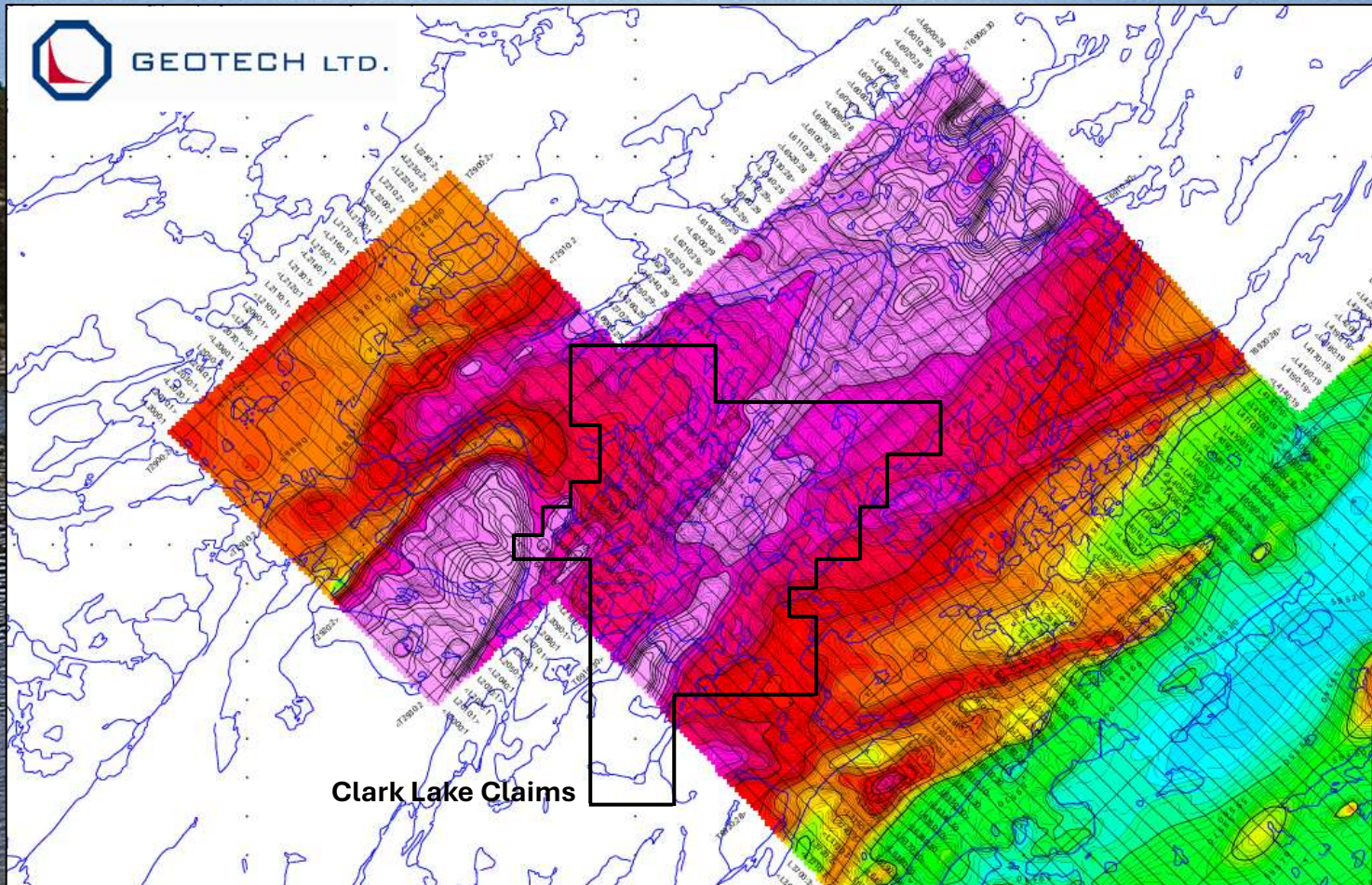
Profiles scale 1 mm = 0.5 pV/A/m⁴
(Linear between +/- 1.0 pV/A/m⁴)
logarithmic above 1.0 pV/A/m⁴



2005 VTEM Confirms Electromagnetic Anomalies

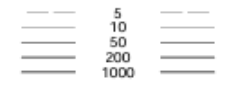


GEOTECH LTD.

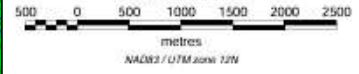


Magnetic field (nT)

Contour intervals (nT):



Scale 1:50000



Clark Lake Claims

2005 VTEM Magnetics



For more information please contact:
Solomon Mohammed
778 828 4107
granderexploration@outlook.com

Contact