

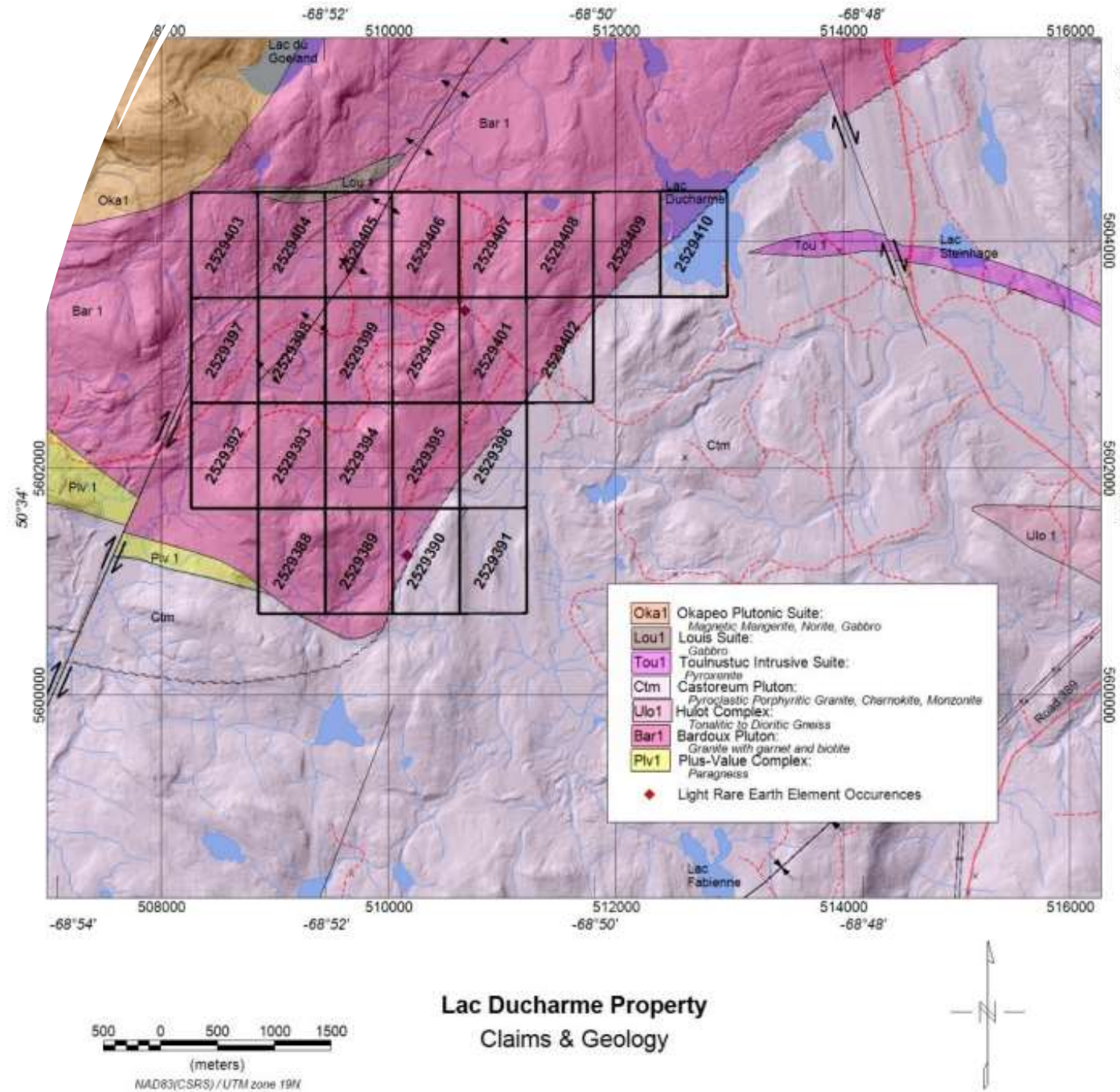
Lac Ducharme REE Project

Central Quebec



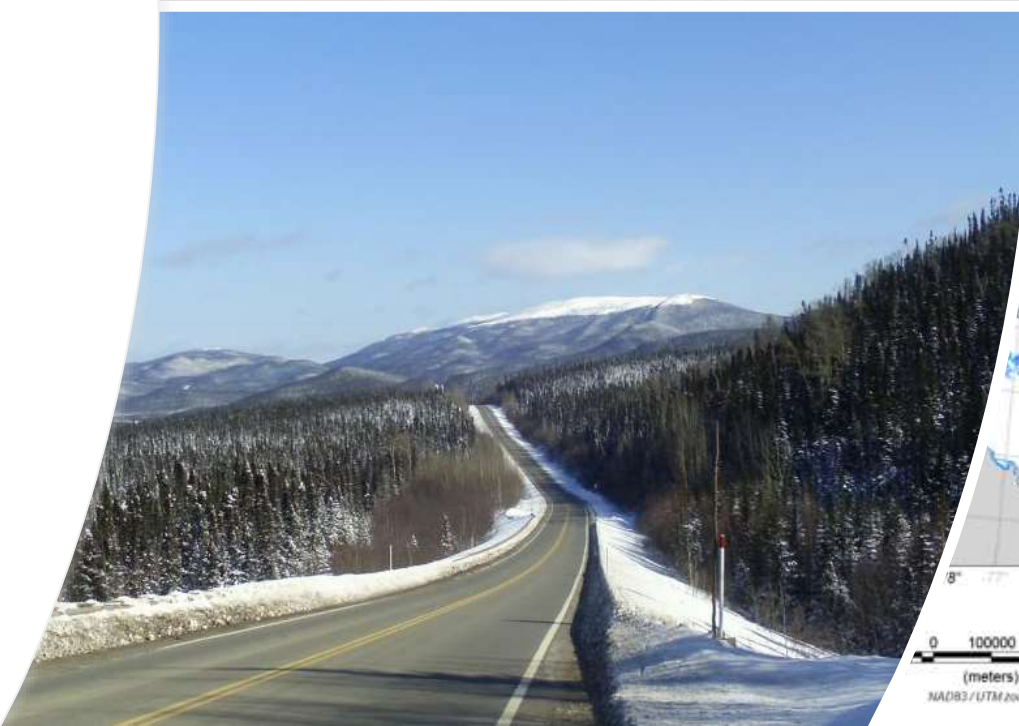
Fast Facts

- 23 claims covering 1257 hectares
- Historic occurrences up to **6% REE** on surface pegmatites
- Excellent road and trail access
- Prospecting and ground mag completed
- Multiple targets concurrent with structure
- REE run with Th
- ~\$85K spent since Sept 2021



Location

- 150 km northeast of Baie-Comeau and 12 km southwest of Manic-5 in the Manicouagan Regional Municipality County
- Highway access (Route 389)
- Accommodations nearby



Superb trail access and outcrop exposure



Exploration Summary

Radiometric
prospecting,
sampling and Shaw
Drilling of outcrops

2021

2022

50-line km Ground
Magnetometer
survey



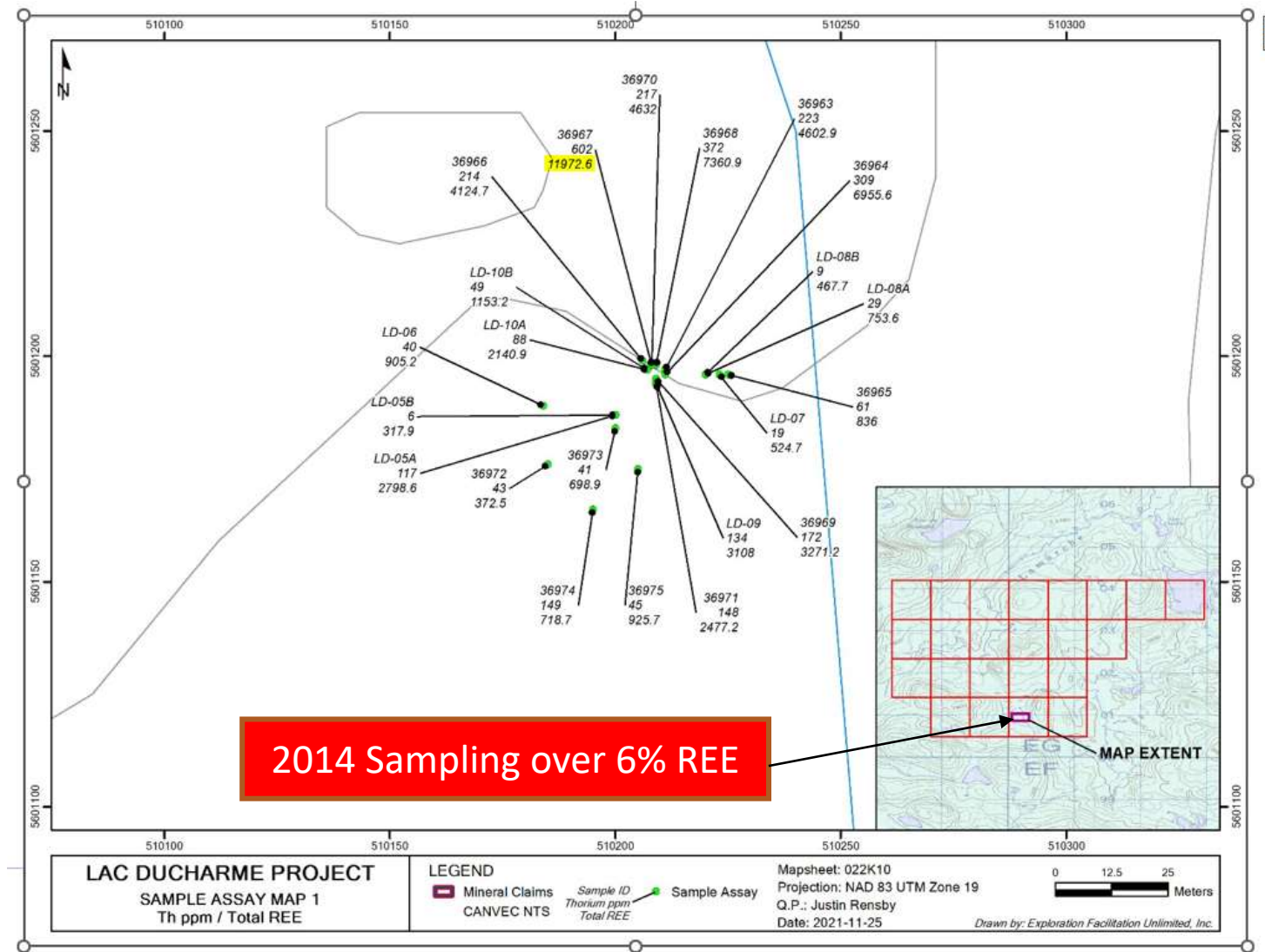
Mineralization

- Historic REE mineralization at Lac Ducharme was identified in two locations by Moukhsil et al (2014). Mineralization consists of allanite phenocrysts of 1 cm or more diameter and appears to be most prevalent in areas of pegmatite with stronger banded texture. Also in both cases, REE mineralization is skewed towards the lighter rare earth elements (LREEs)
- Subsequent programs (2021) identified two new high-grade REE occurrences
- Potential for Lithium discovery



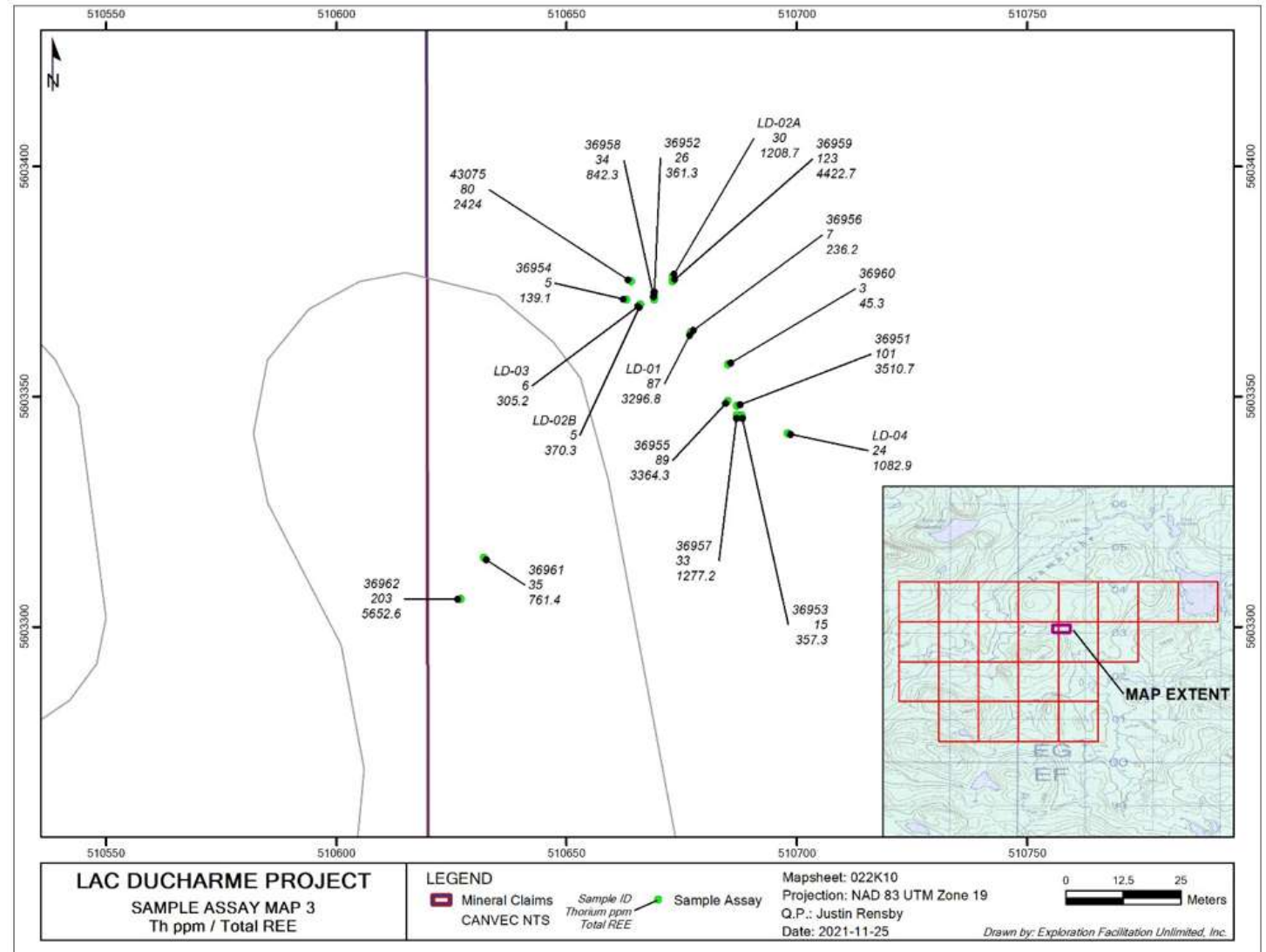
2021 Prospecting confirmed historic REE anomalies

- Samples grading over 1% REE identified at site of 2014 6% REE sample.



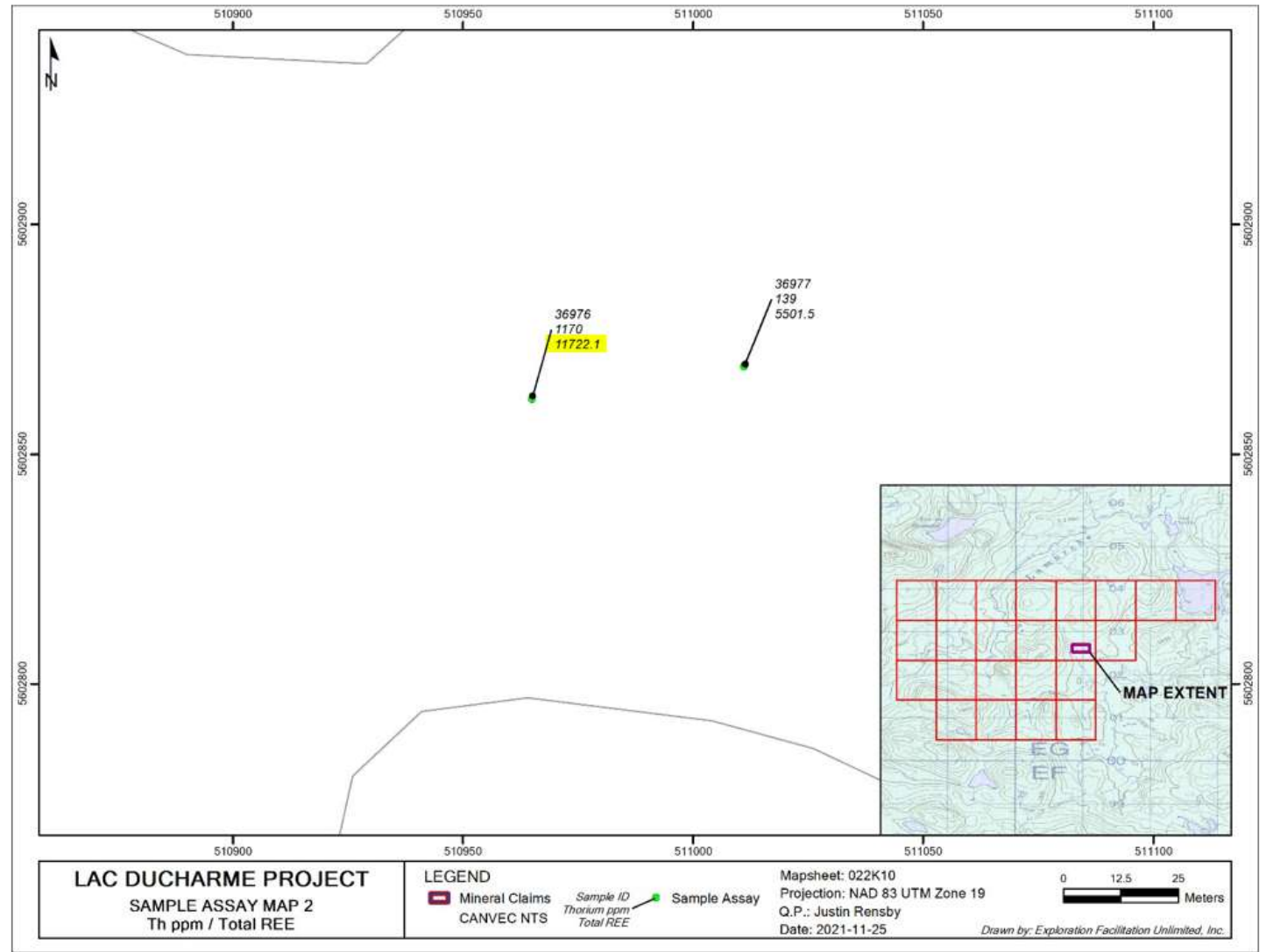
2021 Prospecting confirmed historic REE anomalies

- Multiple samples grading over 0.5% REE identified



2021 Prospecting identified **New** anomalous REE targets

- Samples grading over 1% REE identified





For more information

Contact Reza Mohammed

604-839-7392 or
reza@canexplor.com

