

LAROQUE LAKE URANIUM PROJECT

NE Athabasca Basin

- 1820 ha
- Adjoining ISO's Flagship Laroque East Project
- EM Target identified in 2005 MEGATEM survey
- Target lies within gravity low (2007 Gravity Survey)

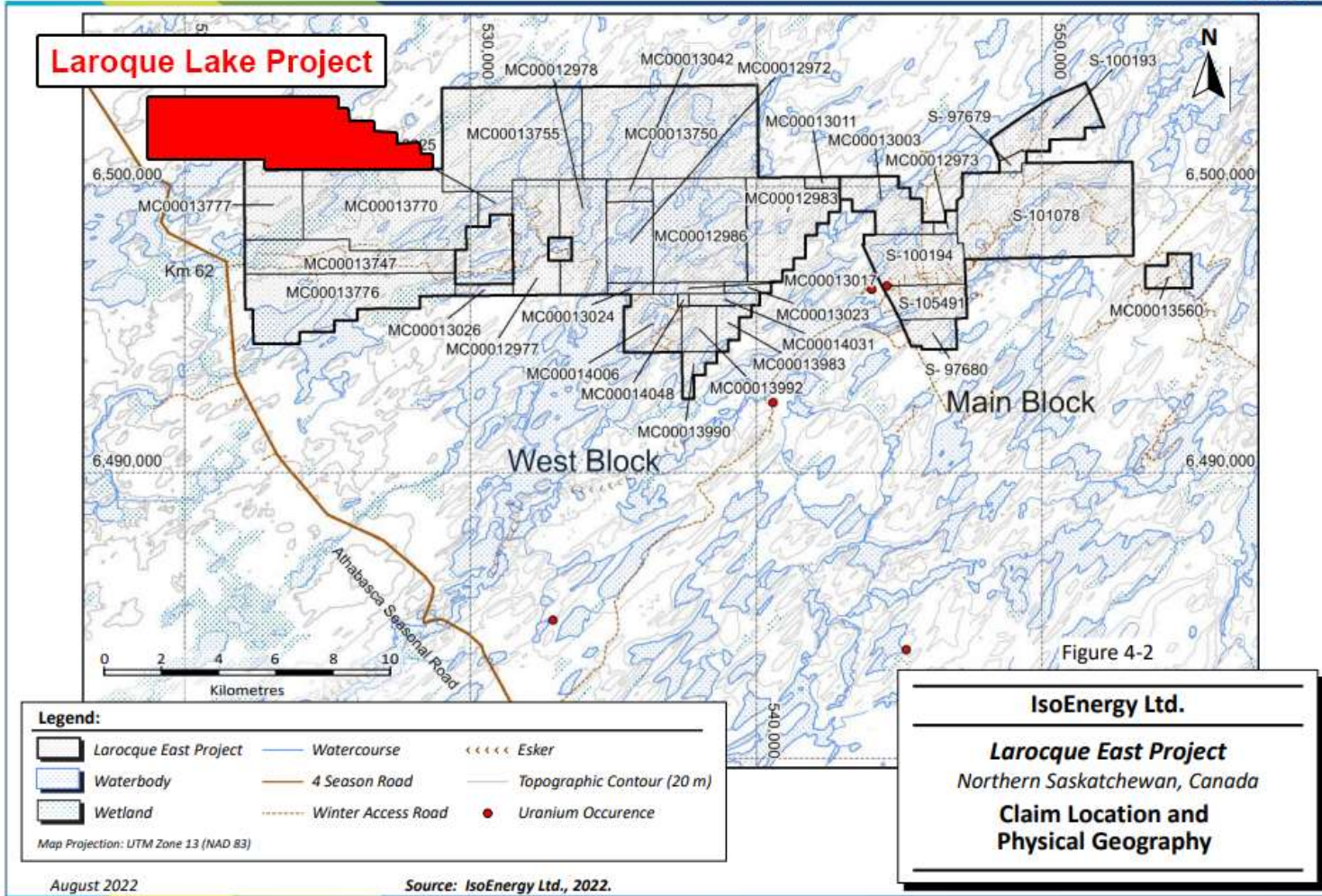
ISO Camp 2022

Adjoining ISO's
Larocque East Project
NE Athabasca Basin



Adjoining ISO's
Larocque East Project

➔ Technical Report on the
Larocque East Project,
Northern Saskatchewan, Canada



IsoEnergy Ltd.

SLR Project No: 233.03567.R0000

Effective Date:
July 8, 2022

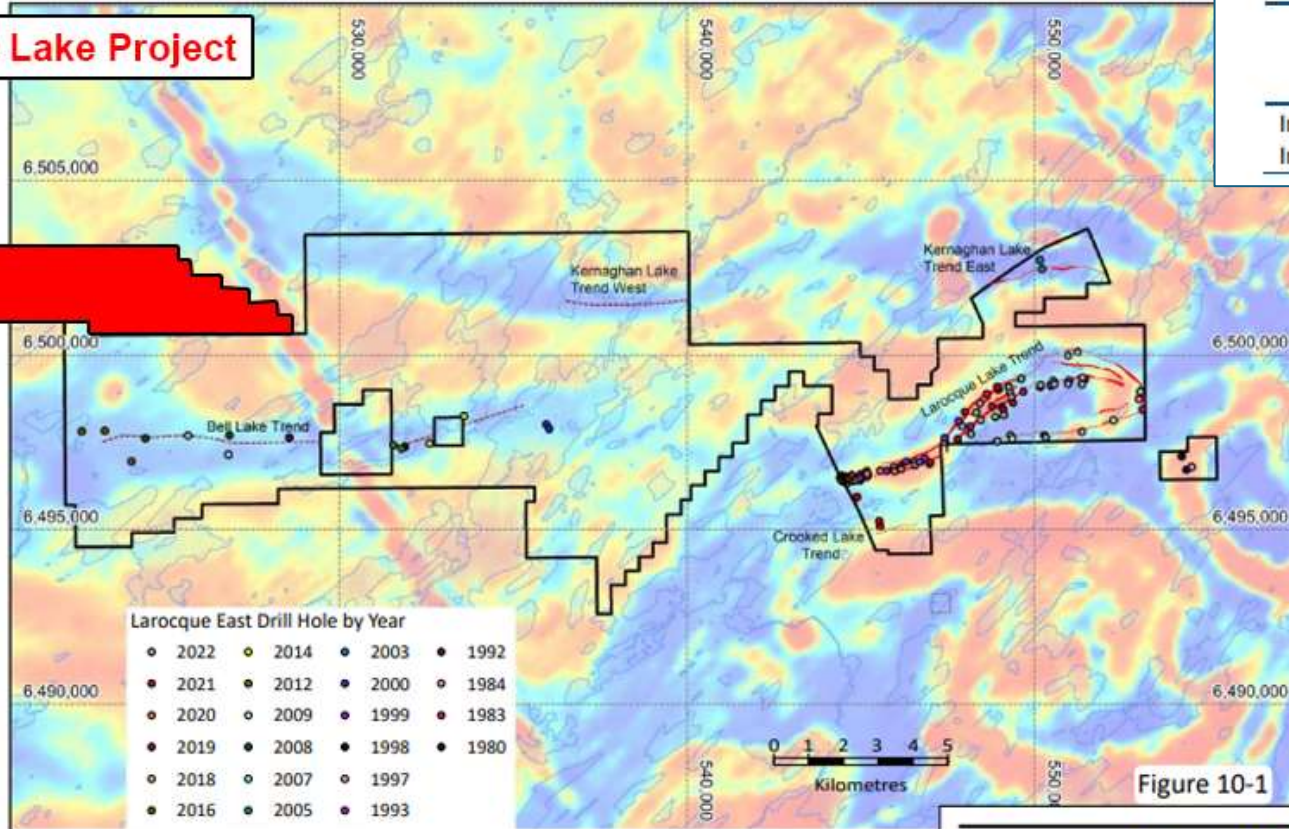
Date of Report:
August 4, 2022

Prepared by:
SLR Consulting (Canada) Ltd.

Qualified Person:
Mark B. Mathisen, C.P.G.



Larocque Lake Project



Larocque East Drill Hole by Year

• 2022	• 2014	• 2003	• 1992
• 2021	• 2012	• 2000	• 1984
• 2020	• 2009	• 1999	• 1983
• 2019	• 2008	• 1998	• 1980
• 2018	• 2007	• 1997	
• 2016	• 2005	• 1993	

**Table 1-1: Mineral Resource Statement – July 8, 2022
IsoEnergy Ltd. – Larocque East Project**

Category	Tonnage (000 t)	Metal Grade (% U ₃ O ₈)	Contained Metal (Mlb U ₃ O ₈)
Indicated	63.8	34.5	48.61
Inferred	54.3	2.2	2.66

2022 Drill indicated resource defined

Legend:

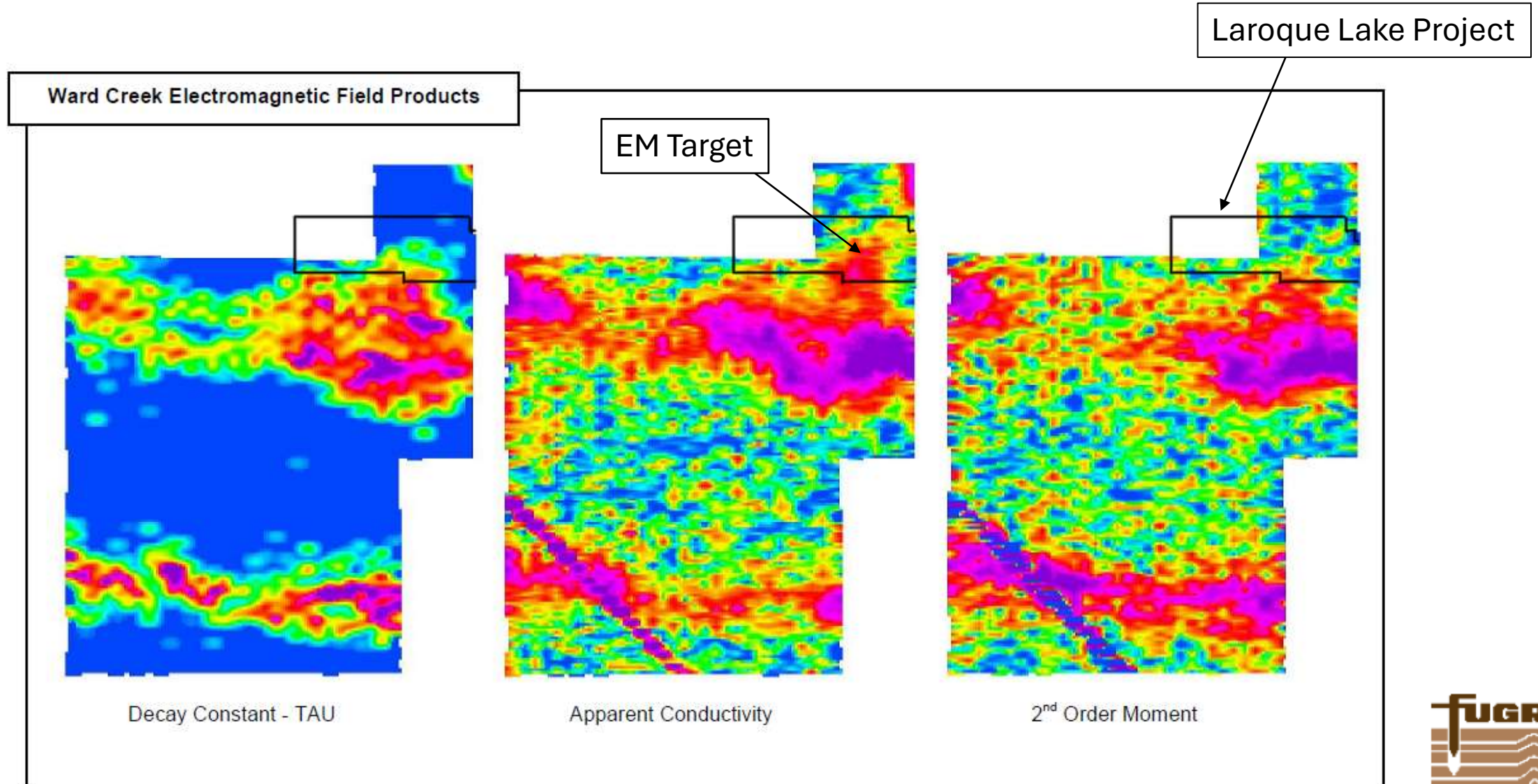
Larocque East Project	Conductor (Weak)	First Vertical Derivative Magnetics (nT/m) 0.143 0.022 -0.0138 -0.042 -0.071 -5.768
Waterbody	Conductor (Moderate)	
	Conductor (Strong)	
	Conductor - Historical	

Map Projection: UTM Zone 13 (NAD 83)

IsoEnergy Ltd.

Larocque East Project
Northern Saskatchewan, Canada
Drill Hole Locations

EM Target defined through MEGATEM 2005 survey conducted by International Uranium Corp.



dataset available

**2007 Gravity Survey
performed by Triex Minerals
identified gravity low**

Laroque Lake Project

