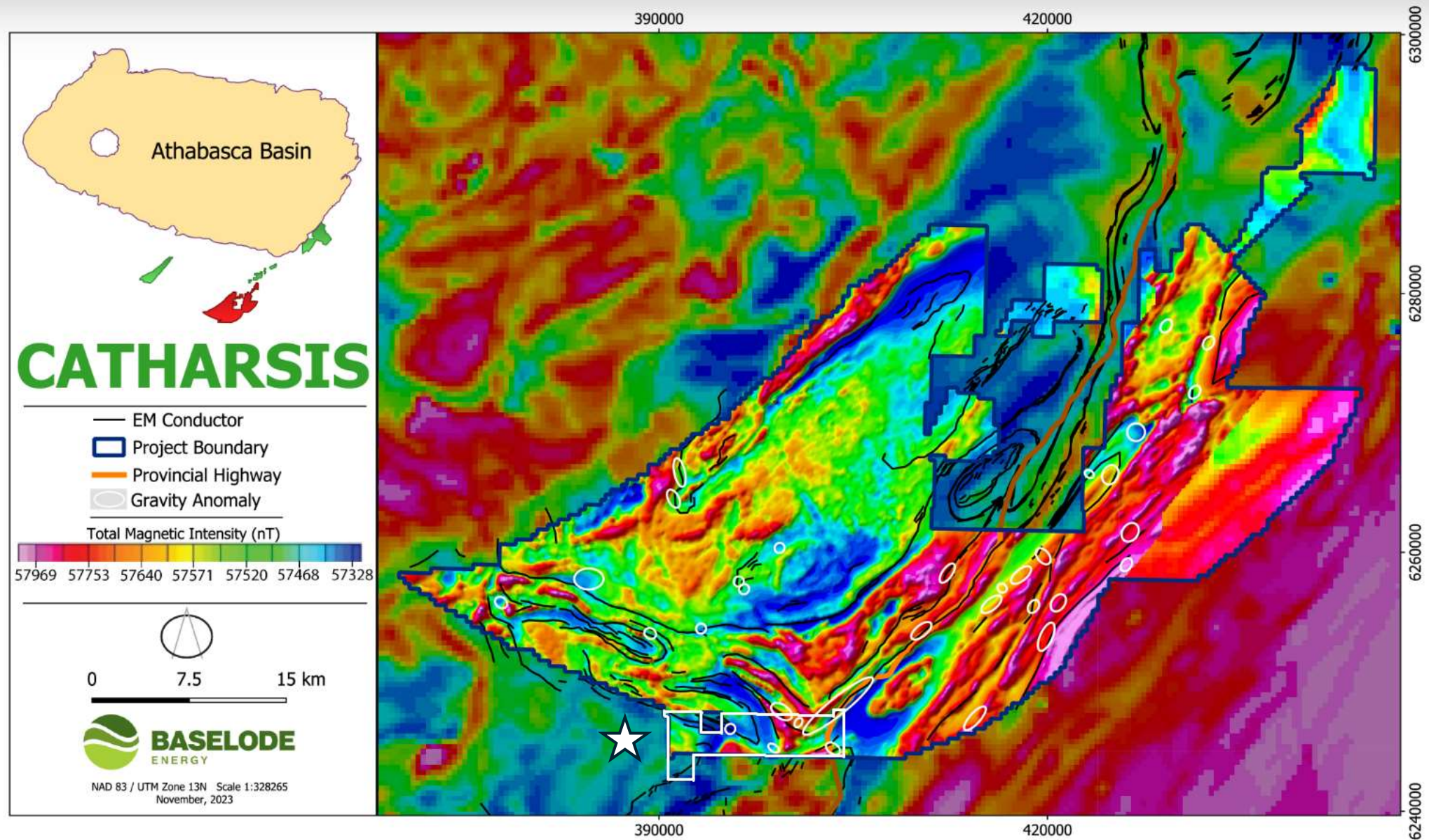


- **Large Property Size: 5534 ha**
- **Excellent access via highway 914**
- **Multiple targets confirmed through Aero TEM III survey**
- **Anomalous Uranium on surface**
- **Within Wollaston-Mudjatik Contact Zone**

Shea River Uranium Project

North Central Saskatchewan



Located at the southern extent of Baseload Energy's Catharsis Project

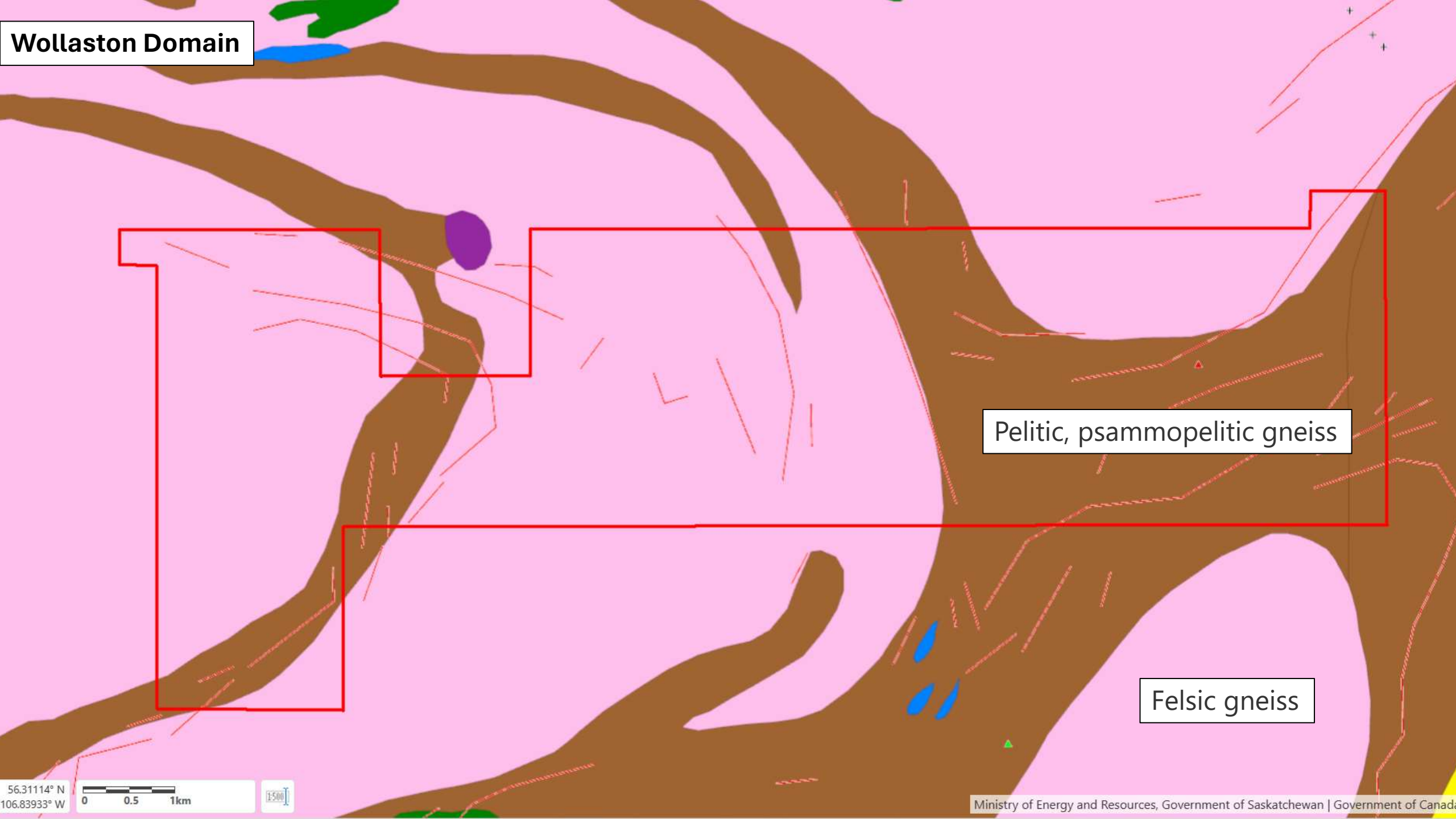
Area: 5534 ha

Multiple targets: Subsurface EM conductors

SMDI File 1965 / Vedette Lake surface trenches up to 0.057% U3O8 (1977)

Excellent road access via Highway 914

Wollaston Domain



Pelitic, psammopelitic gneiss

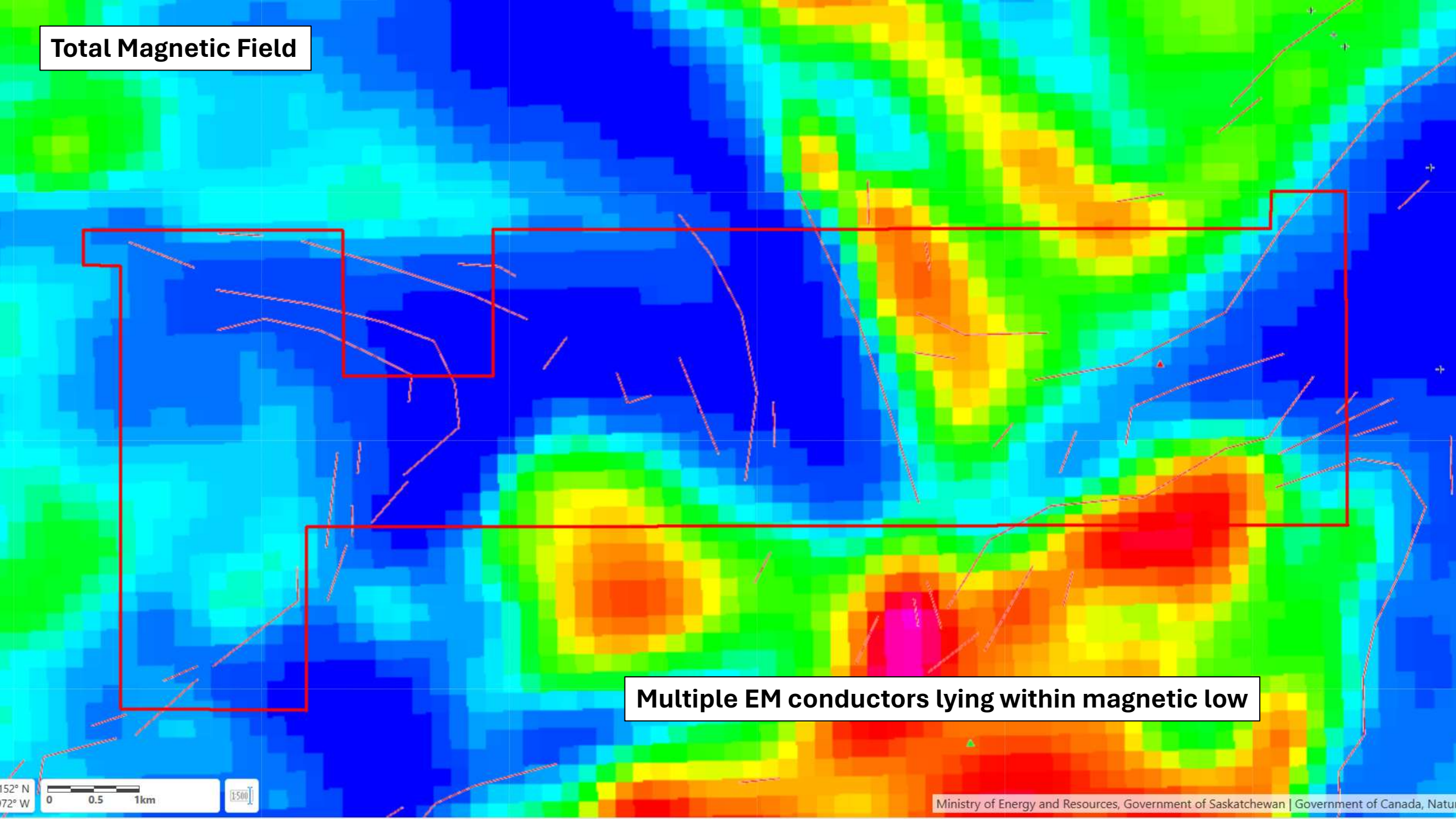
Felsic gneiss

56.31114° N
106.83933° W

0 0.5 1km

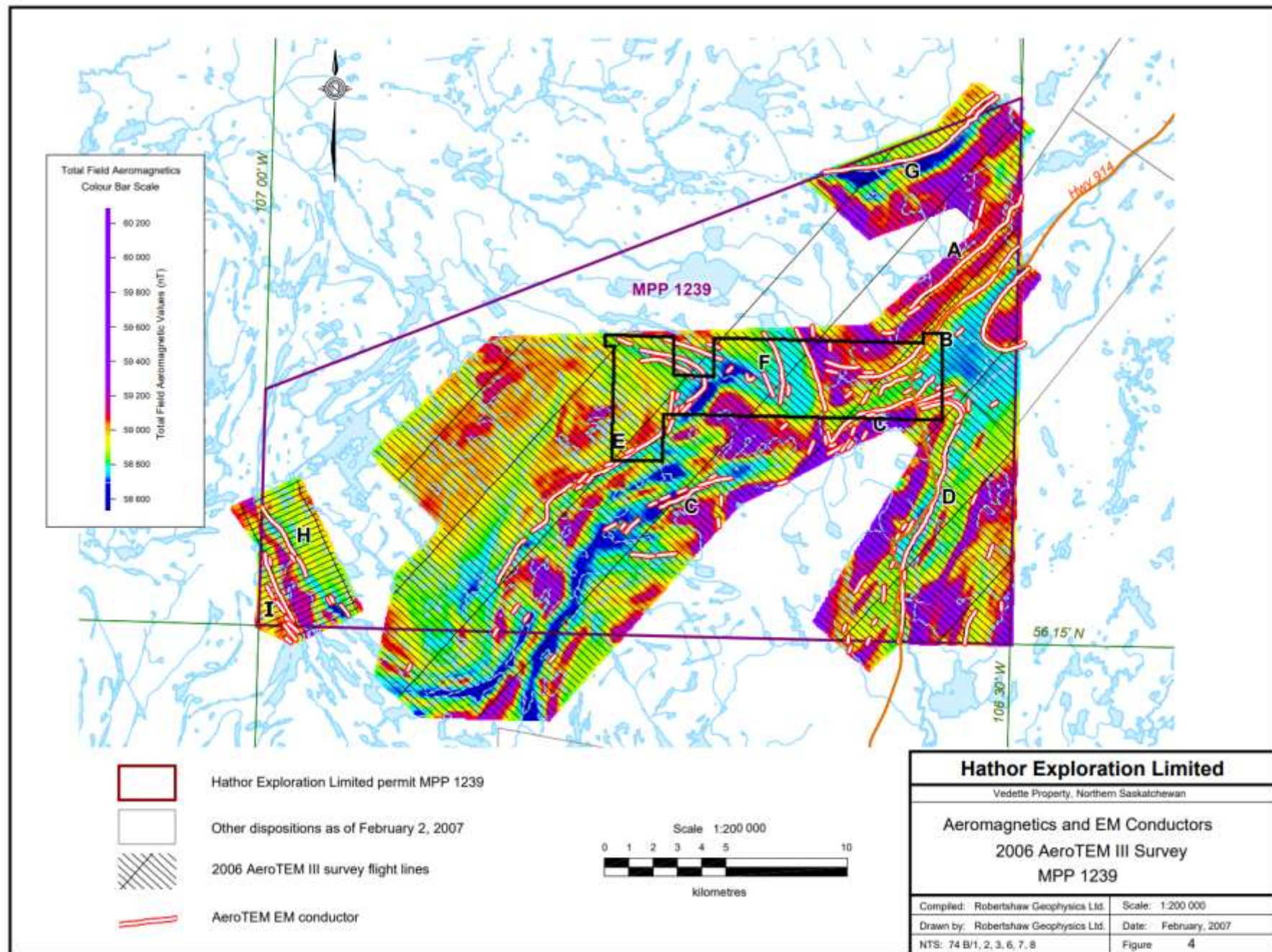
1:500

Total Magnetic Field



Multiple EM conductors lying within magnetic low

2006 Aero TEM survey by Hathor identified prominent subsurface EM conductors associated with magnetic lows.



2006 Aero TEM survey by Hathor identified prominent subsurface EM conductus associated with magnetic lows and interpreted breaks.

