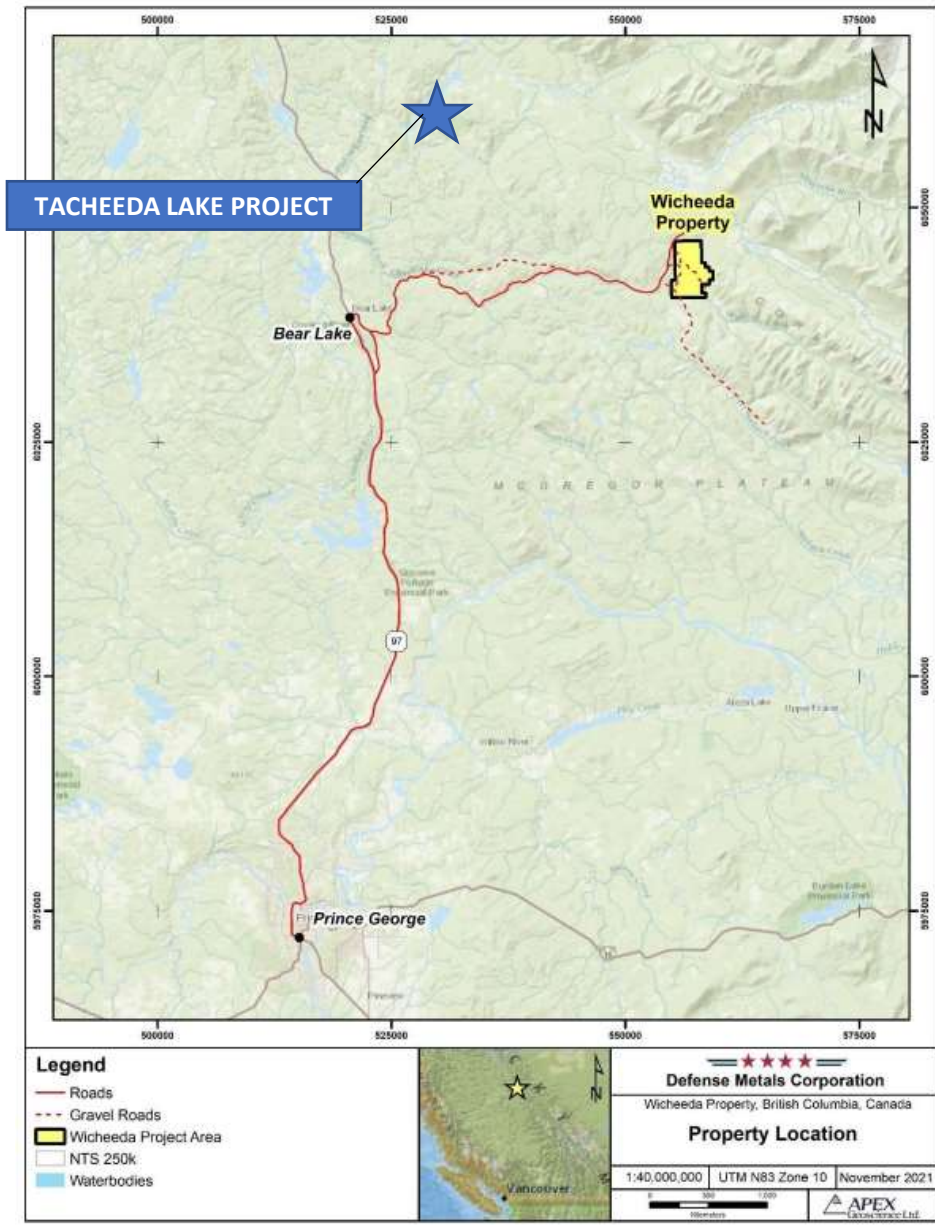

Tacheeda Lake REE Project

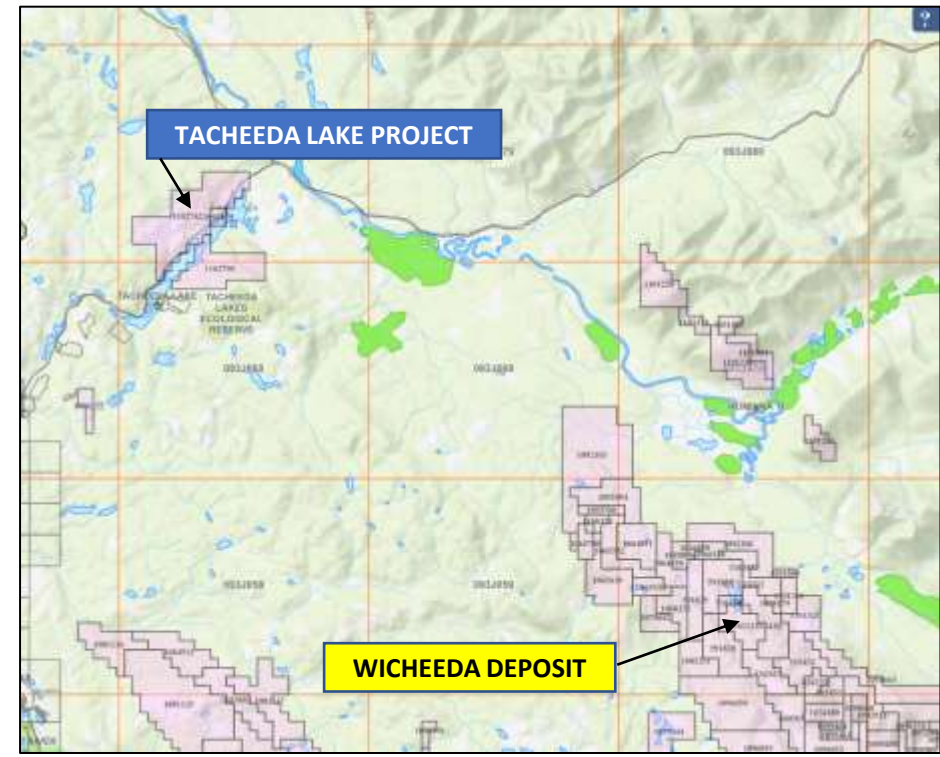
Cariboo Mining Division
British Columbia





BC's Premier REE Camp

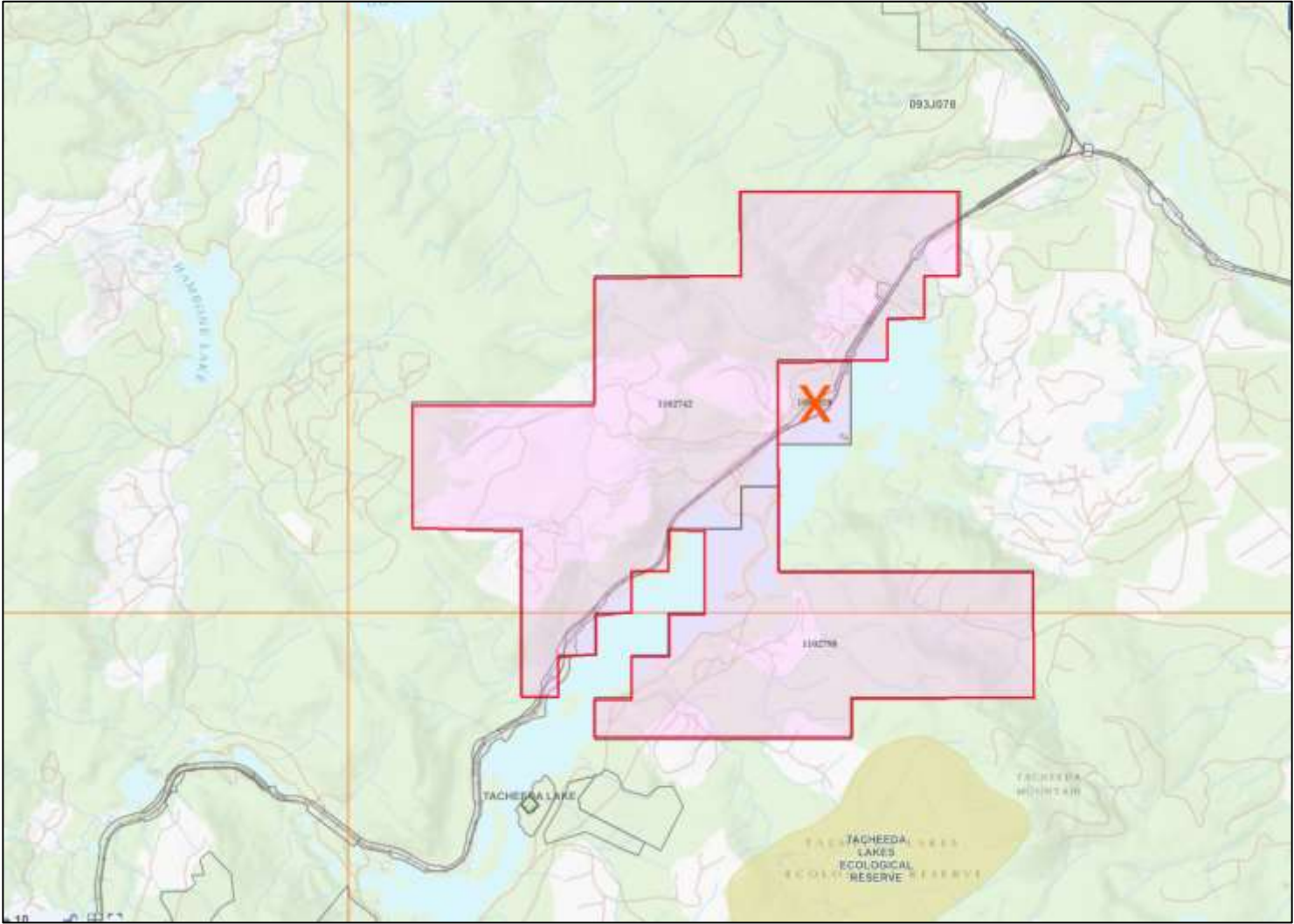
Defence Metals Corp.'s Wicheeda Deposit has an Indicated Mineral Resource of 5M tonnes averaging **2.95% TREO** (Total Rare Earth Oxide), and an Inferred Mineral Resource of 29.5M tonnes averaging **1.83% TREO**.



Access by BC Highway 97 and thereafter by forestry roads



2 Contiguous Mineral Claims / 2111 hectares / 88km North of Prince George



In 2011 REE Targets were generated from an airborne magnetic and radiometric survey

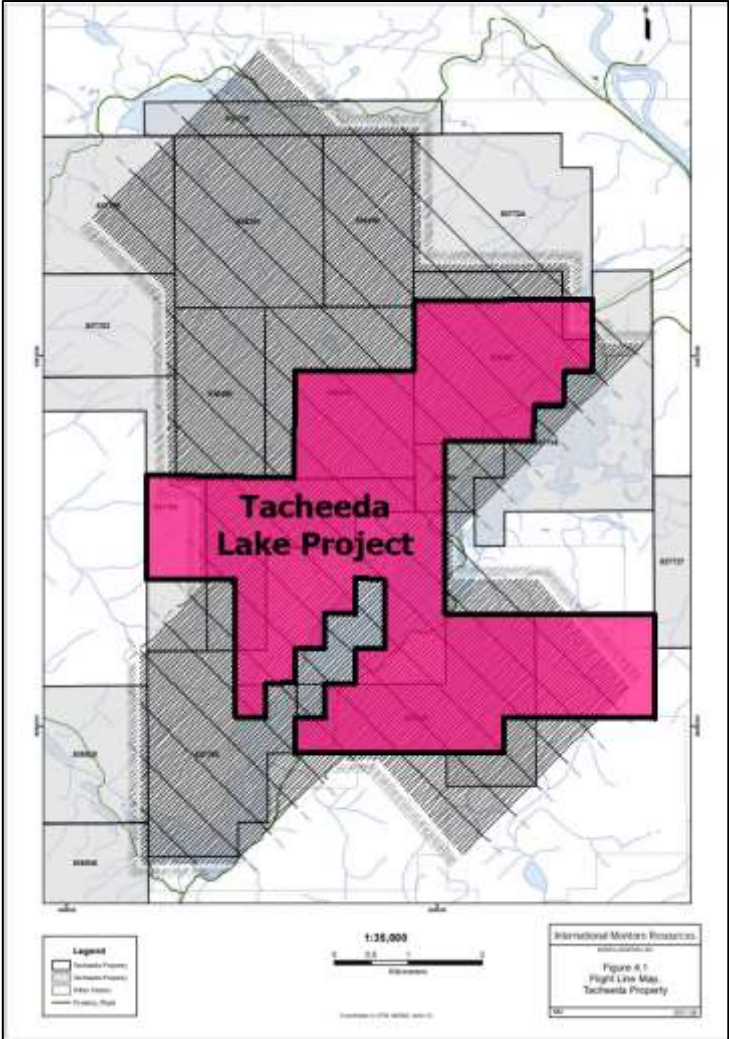
BC Geological Survey
Assessment Report
32817

INTERNATIONAL MONTORO RESOURCES INC.
2011 EXPLORATION AND FIELDWORK
ON THE TACHEEDA PROPERTY

Cariboo Mining Division
Mineral Tenures:
530954, 831263, 831282, 836327, 836355, 836357, 836359, 836360
836361, 836535, 836536, 837662, 837682, 837702, 837722, 837723
837724, 837725, 837726, 837727

Geographic Coordinates
Approximate Centre:
54°35'00" N
122°15'00" W
NTS Sheets 93J/10

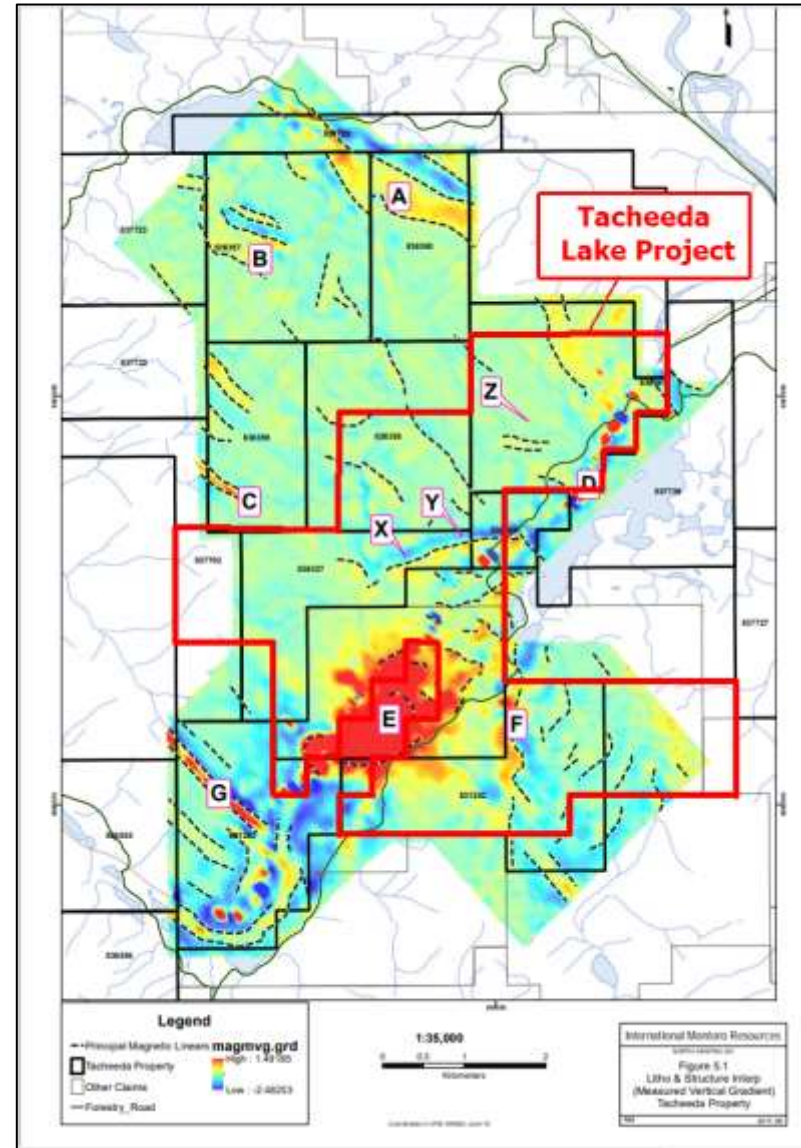
Owners & Operator: International Montoro Resources Inc.
#600 – 625 Howe St.
Vancouver, BC
V6C2T6
Consultant: Dahrouge Geological Consulting Ltd.
Suite 1450, 789 West Pender Street
Vancouver, British Columbia, V6C 1H2
Authors: Neil McCallum, P.Geo
Date Submitted: January 29, 2012



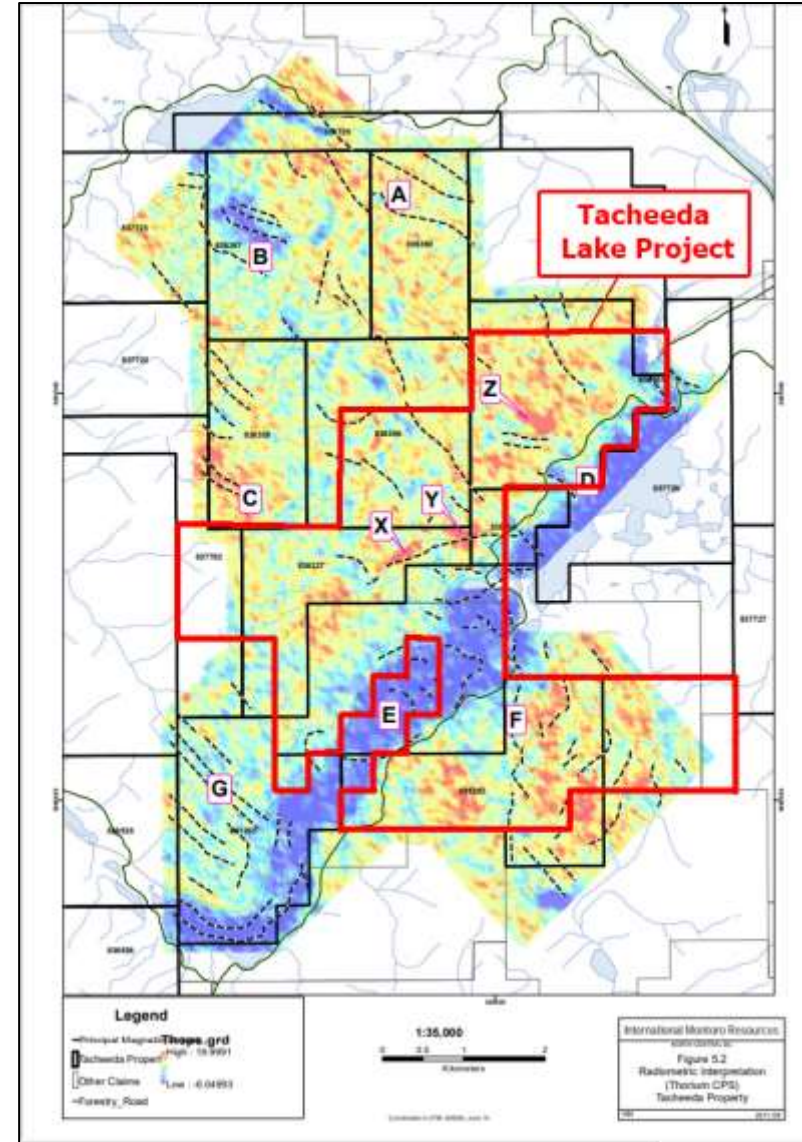
Job # 11049

Helicopter-Borne Magnetic Gradiometer & Radiometric Survey

Large magnetic feature (E) intruding Bedrock at the southern extent of Tacheeda Lake.



Target picks based on Thorium anomalies (red >20 cps) correlating with interpreted structural breaks.





For more information, contact Reza Mohammed at
604-839-7392 or reza@canexplor.com