

Hardrock **Lithium**
Potential

High Grade REE Discovered on Surface up to **8766ppm**



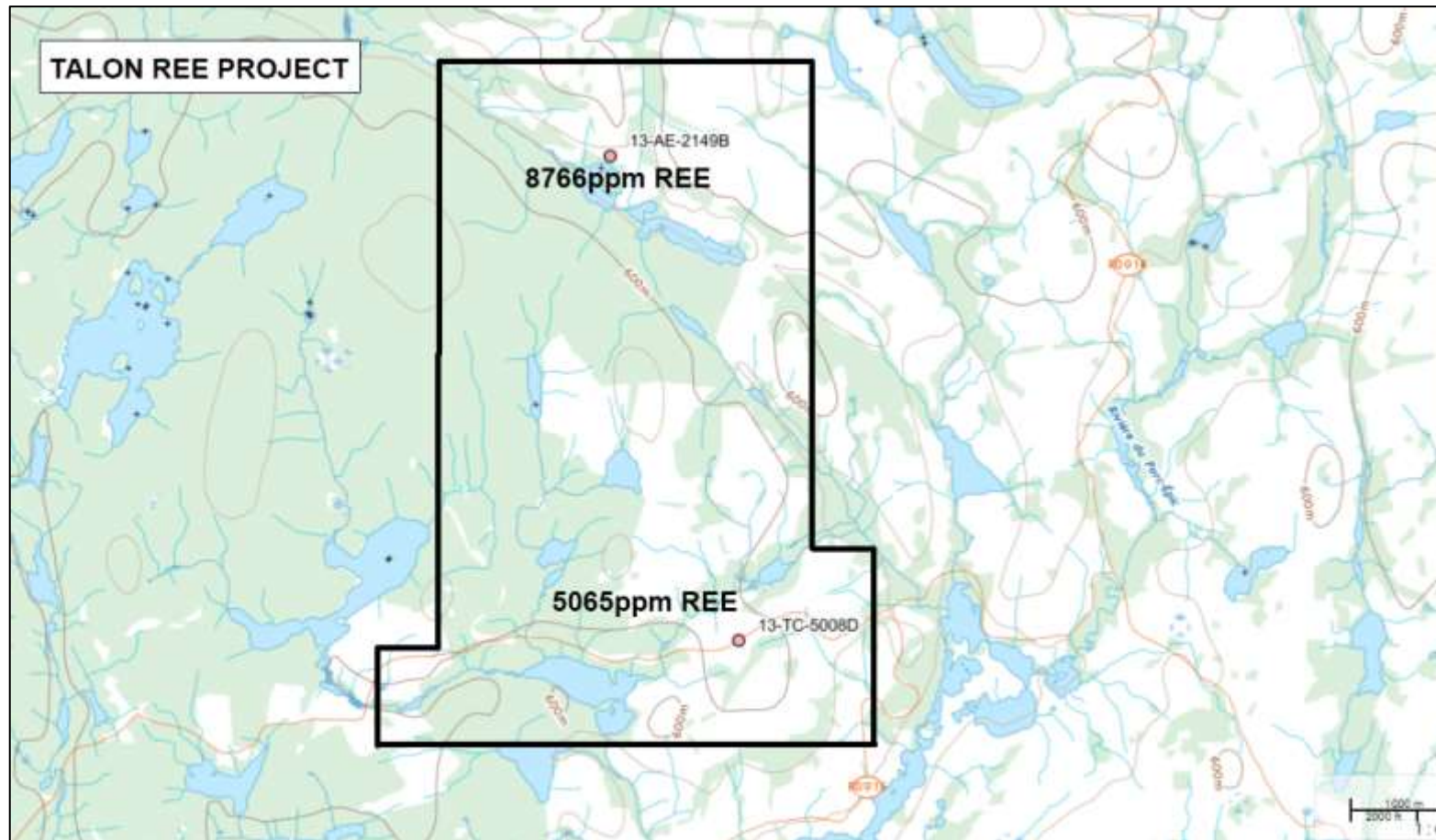
Pegmatite Dykes enriched with **Cesium** and **Niobium**



TALON REE PROJECT

Quebec

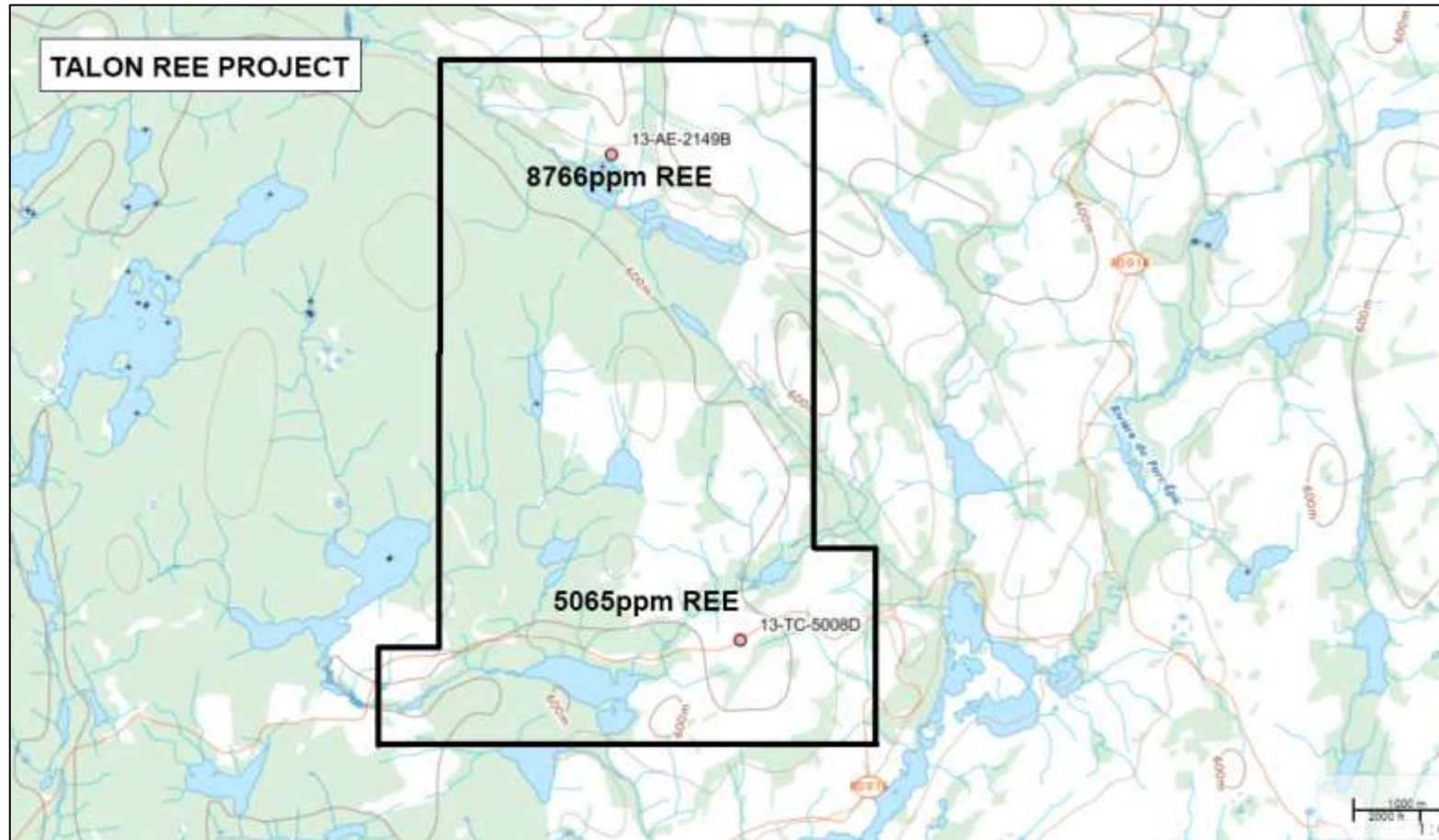
Enriched Pegmatite Dykes with Lithium Potential



Cesium (Ce) and Niobium (Nb) are often deposited with Lithium, which historically was rarely measured.

- **Sample TC-5008D**
- The showing corresponds to a whitish **granitic pegmatite dyke** with several centimetric crystals of biotites (1%) forming a tree-like texture. The dyke is 1 to 50 cm thick and cuts a banded graphite-biotite-garnet paragneiss of the Plus-Value Complex. Rare earth mineralization is concentrated in micrometric grains (>1mm) of monazite Substance - comment: A grab sample (13-TC-5008D) returned LREE contents of 5065 ppm (1380 ppm La, **2490 ppm Ce** and **844 ppm Nd**).

Enriched Pegmatite Dykes with Lithium Potential

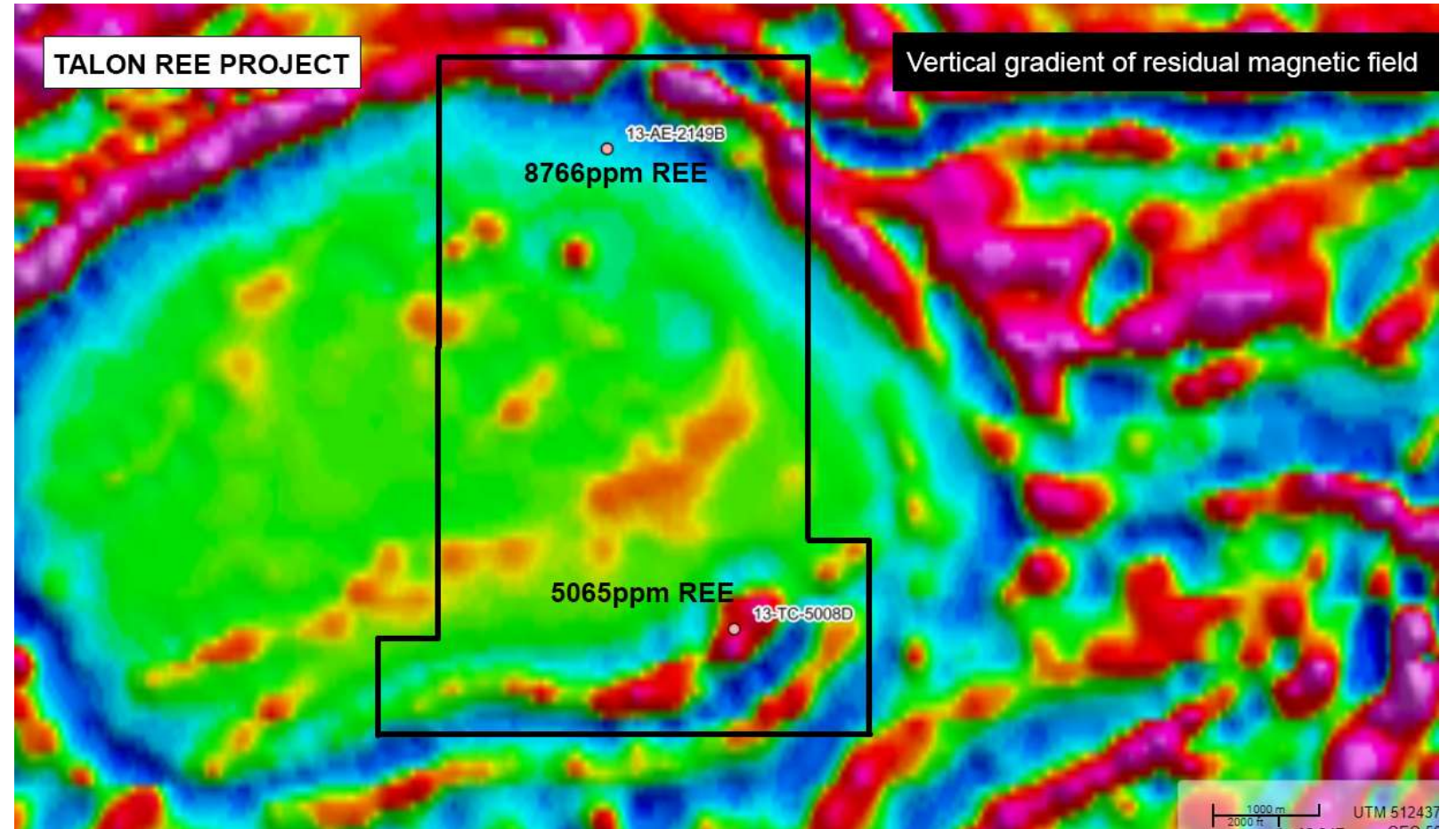


Cesium (Ce) and Niobium (Nb) are often deposited with Lithium, which historically was rarely measured.

- **Sample AE-2149B**
- This showing corresponds to a granitic pegmatite dyke 60 to 80cm thick, with biotite and magnetite. This **pegmatite** cuts a filiated ad polymorphic mangerite of the Castoreum Plutonic Suite.
- A grab sample of pegmatite (13-AE-2149B) assayed 8766 ppm light TR (**1710 ppm Nd, 4130 ppm Ce**), with 766 ppm Th and 6340 ppm Zr.

Structural Controls

- REE discovered within disc-shaped region



TALON REE PROJECT

Analytic signal of the compilation of
high resolution aeromagnetic surveys.

13-AE-2149B
8766ppm REE

5065ppm REE
13-TC-5008D

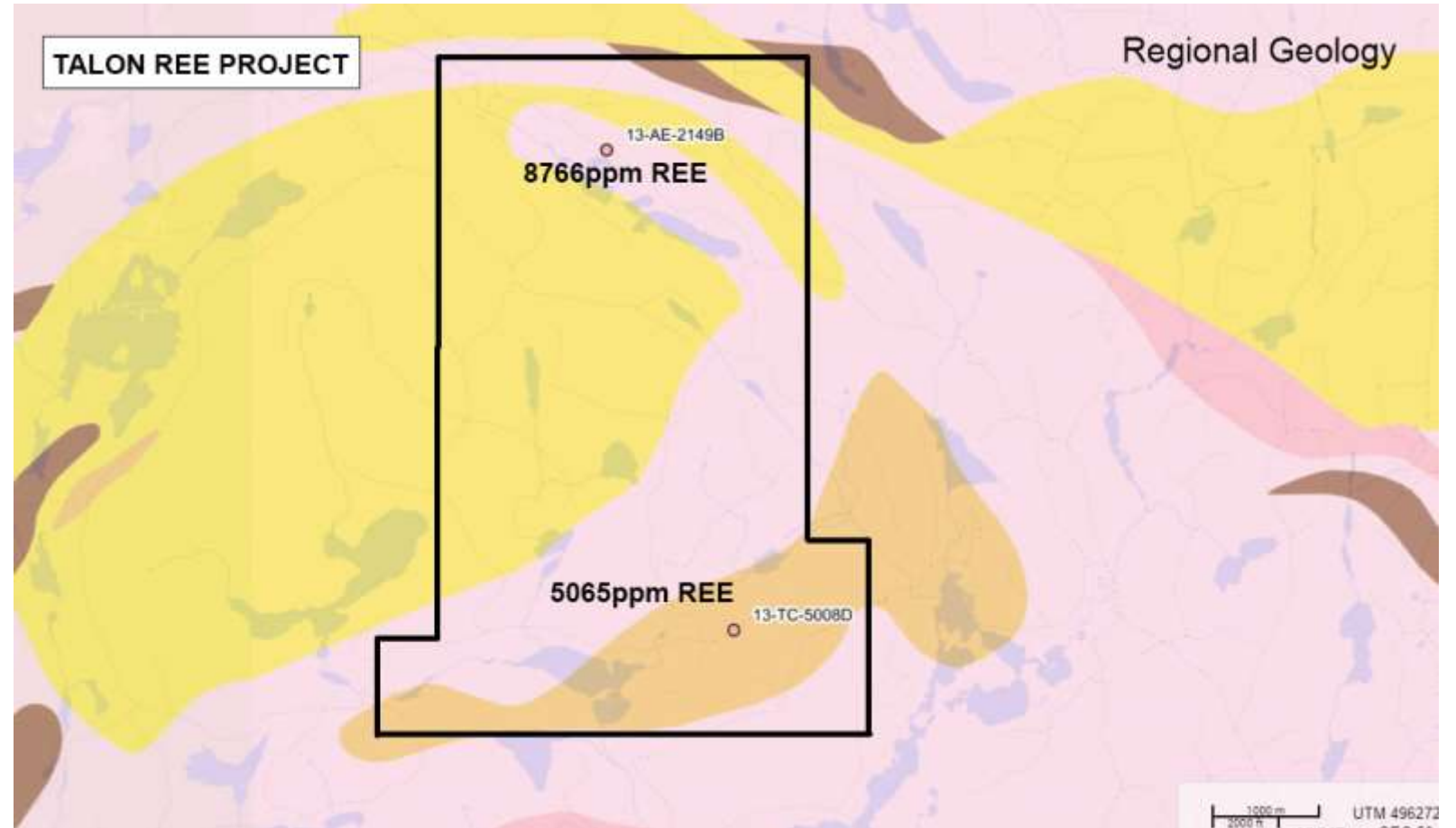
1000 m
2000 ft UTM 504795

Structural Controls

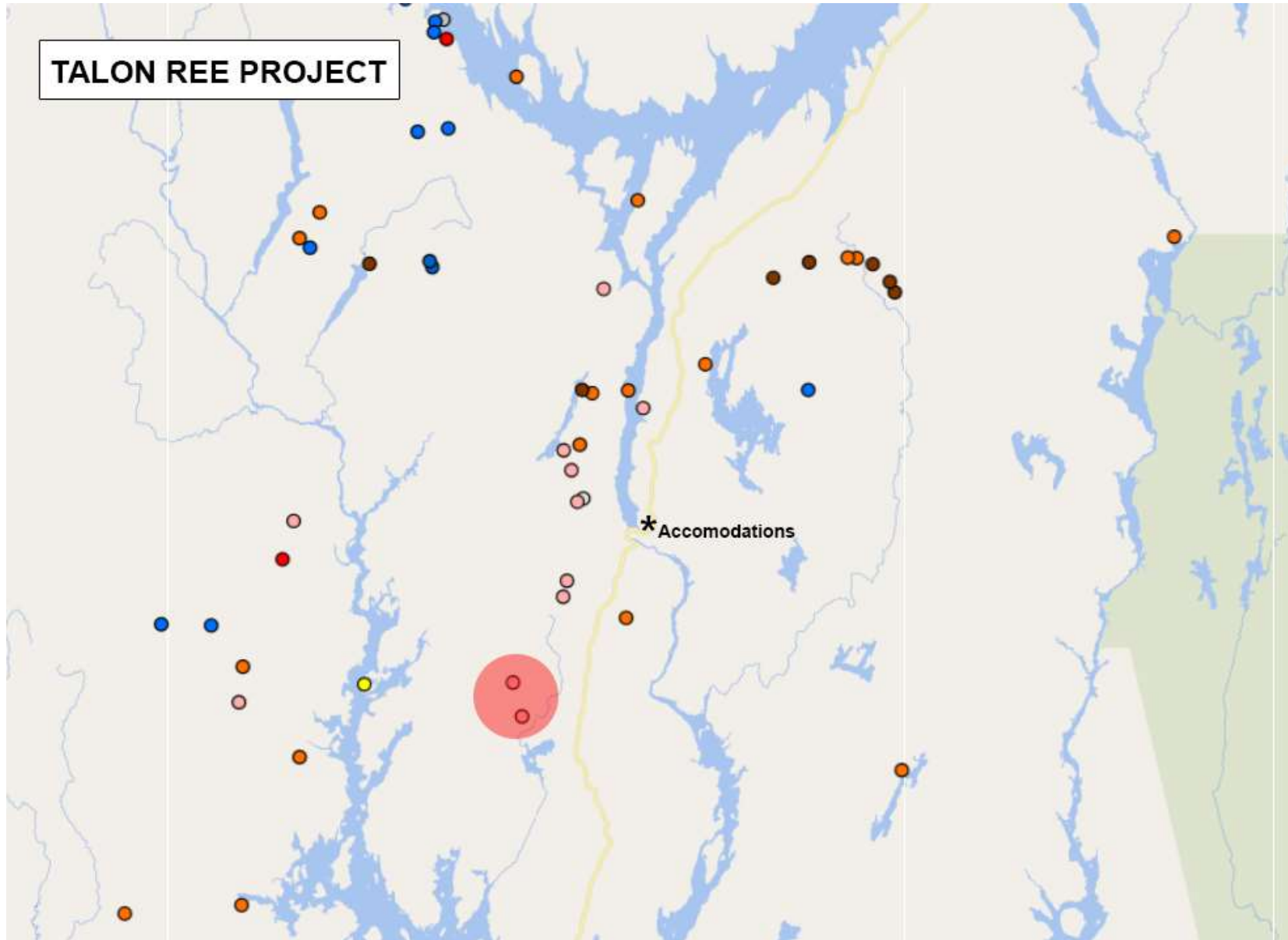
- REE discovered within
disc-shaped region

Structural Controls

- REE discovered within disc-shaped region



TALON REE PROJECT



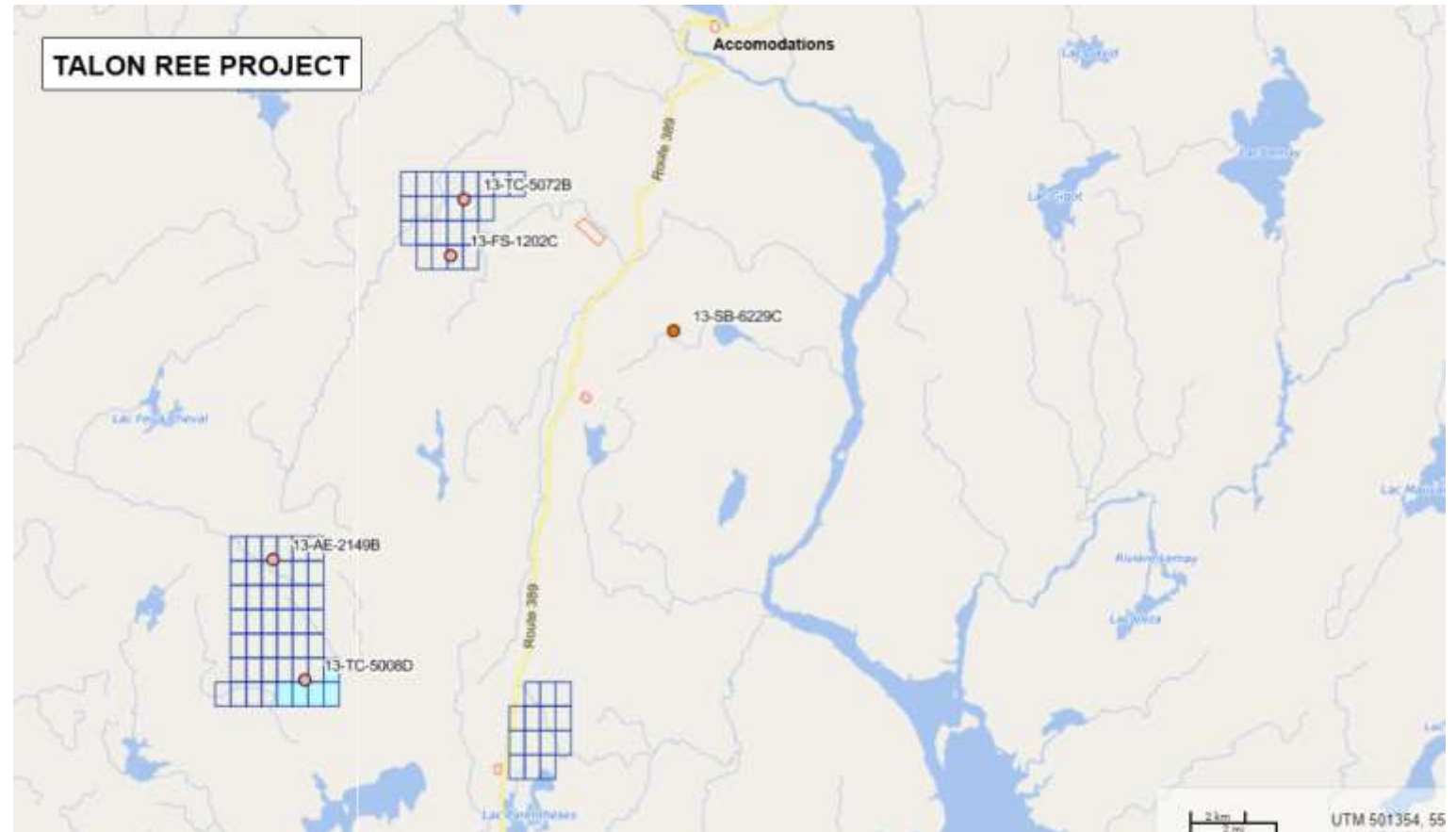
Central Quebec

- Access by Highway 389
- Accommodation at Motel d'Énergie

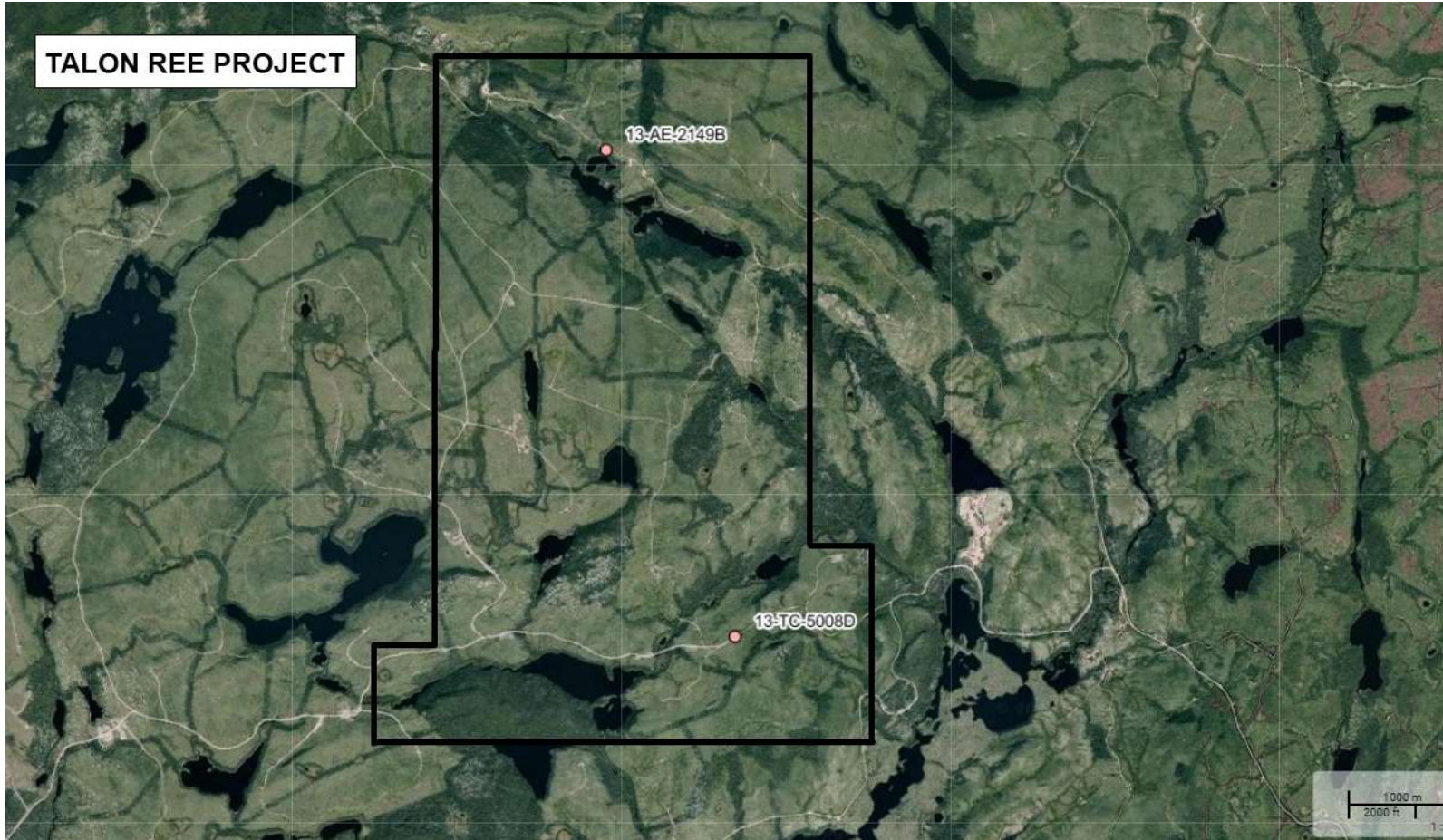


Large Land Package

- 45 map designated claims
- Large target can be expanded
- Over 2500ha



TALON REE PROJECT



Access

- Multiple clear-cuts and roads

For more
information

- Contact Reza Mohammed
- (604) 839-7392
- reza@canexplor.com