



**Lac Rochester Copper Project**  
Val d'or Quebec





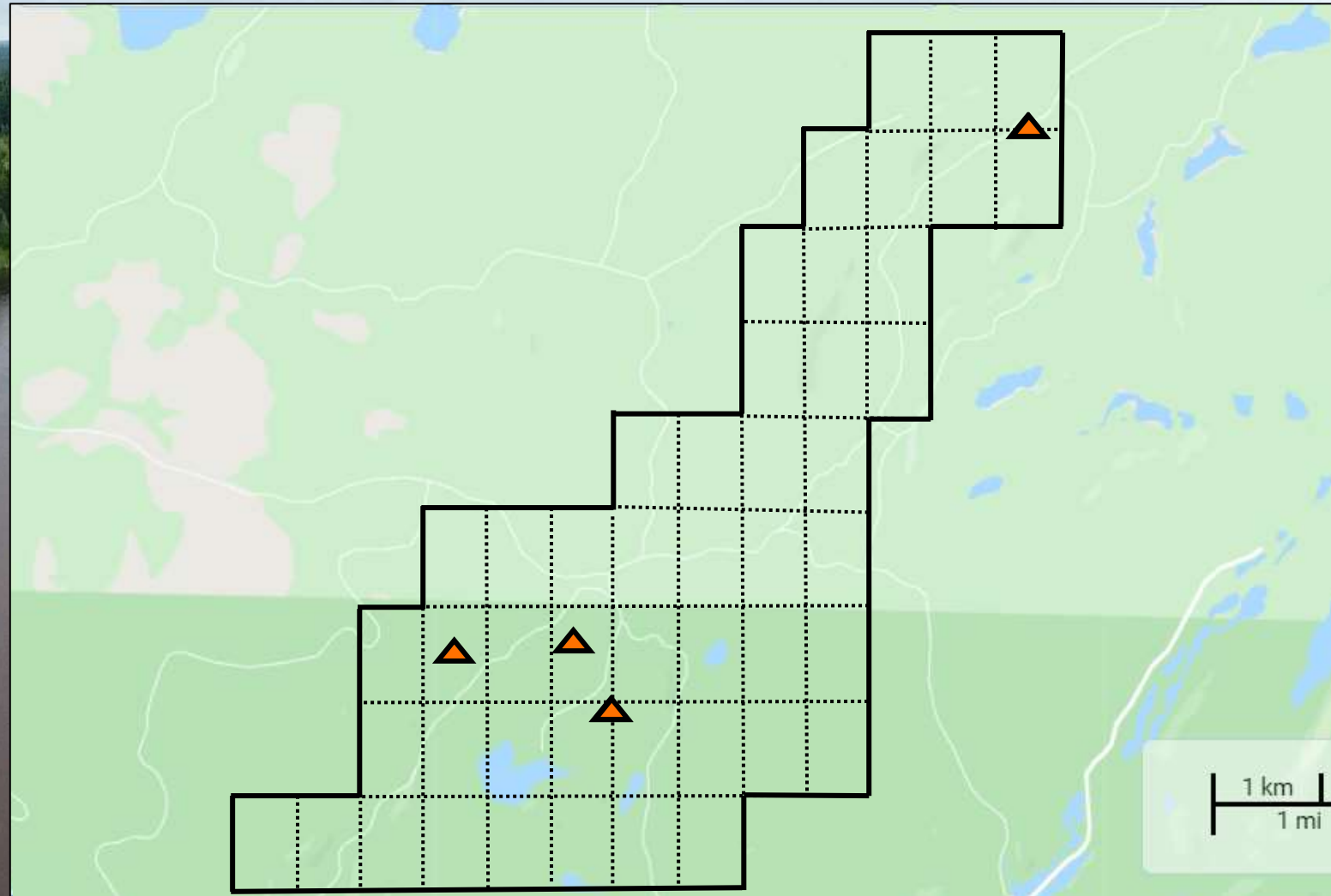
Lac Rochester Copper Project



Located in Val d'or Quebec

# Lac Rochester Copper Project

- **Good road access**
- **Nearby accommodations within an hour drive of Val d'or**
- **Historic programs confirm copper system**
- **48 map designated claims**
- **Four historic showings**
- **2,774.88 hectares**





**Drill Hole: P75**  
- **0.5% Cp over 25 ft**  
**From 568 ft to 593 ft**  
**GM: 26016**

**Drill Hole: P.62**  
- **10% Po Py Cp over 4 ft**  
**From 170 ft to 174 ft**  
**GM: 25945**

**Drill Hole: P77**  
**7% Cp over 3 ft**  
**From 283 ft to 286 ft**  
**GM: 26016**

**1969/Drill Hole**  
**5800 ppm Cu Over 0.2m**  
**1200 ppm Cu Over 1.8m**

**Drill Hole: P.132**  
- **0.2% to 0.3% Cp over 25 ft**  
**From 92 ft to 117 ft**  
**GM: 27984**

**Drill Hole: P.139**  
- **0.2% Cp over 96 ft**  
**From 29 ft to 125 ft**  
**GM: 27984**

**Drill Hole: P 88**  
**0.5% Cp over 88 ft**  
**From 189 ft to 277 ft**  
**GM: 26019**

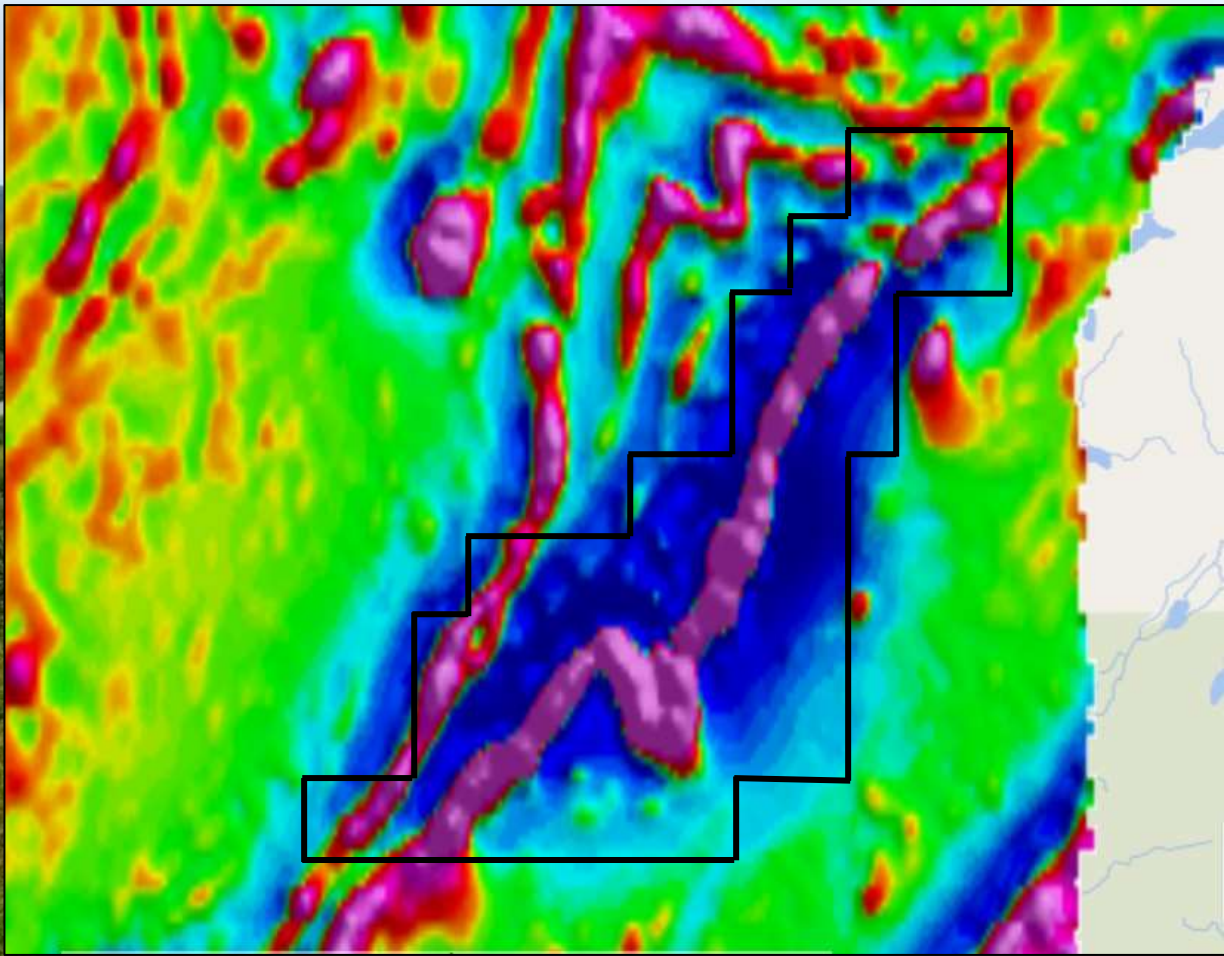
**1960/Drill Hole**  
**40000 ppm Cu Over 1.2m**  
**1969/Drill Hole**  
**6200 ppm Cu Over 0.3m**

**Drill Hole: P 58**  
- **1% Cp over 16 ft**  
**From 21 ft to 37 ft**  
- **4%-5% Po Py Cp over 7 ft**  
**From 86 ft to 93 ft**  
- **3% Po Py Cp over 5 ft**  
**From 106 ft to 111 ft**  
**GM: 26019**

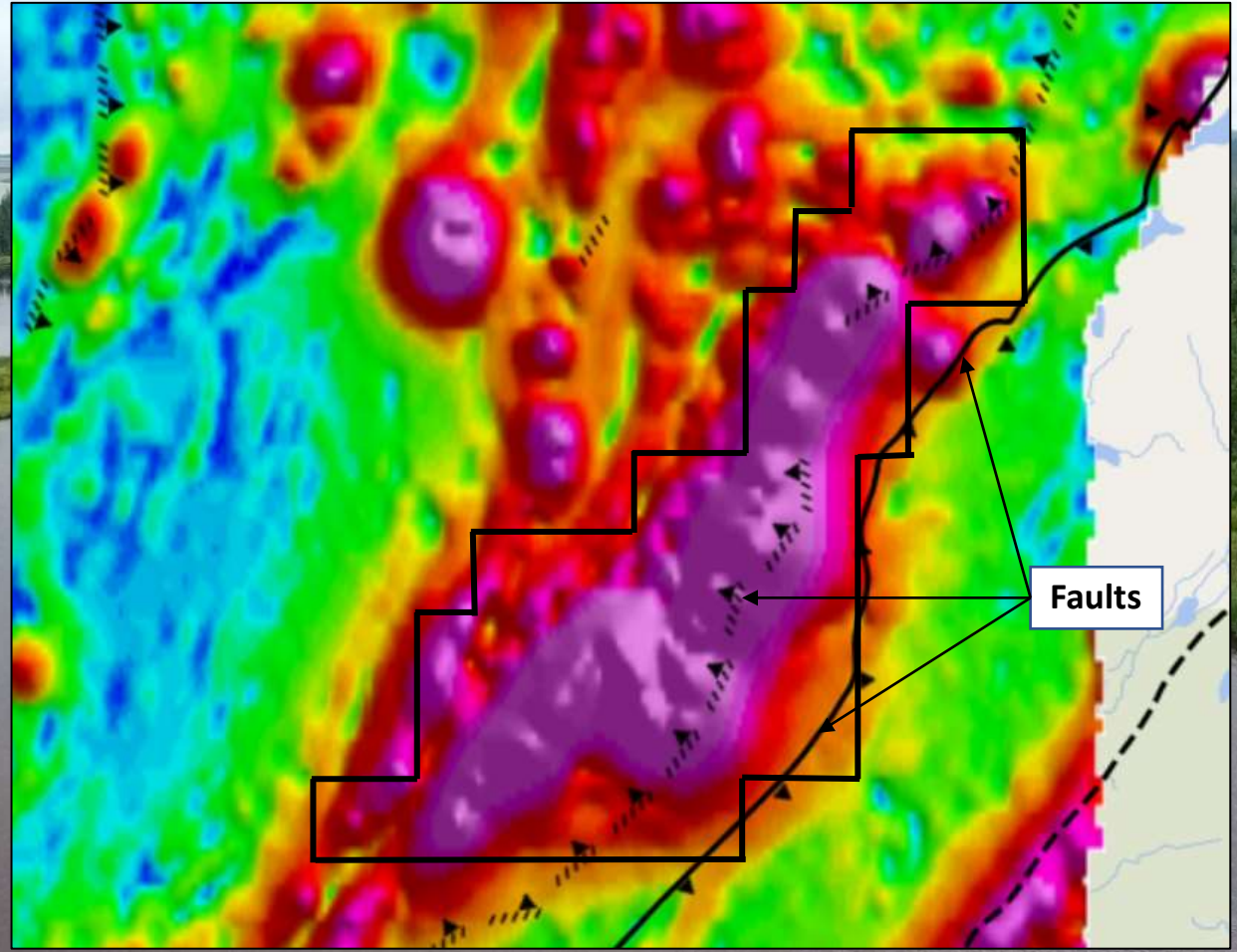
**1969/Drill Hole**  
**5000 ppm Cu Over 0.4m**  
**1960/Select Sample**  
**50000 ppm Cu**

## Significant Results





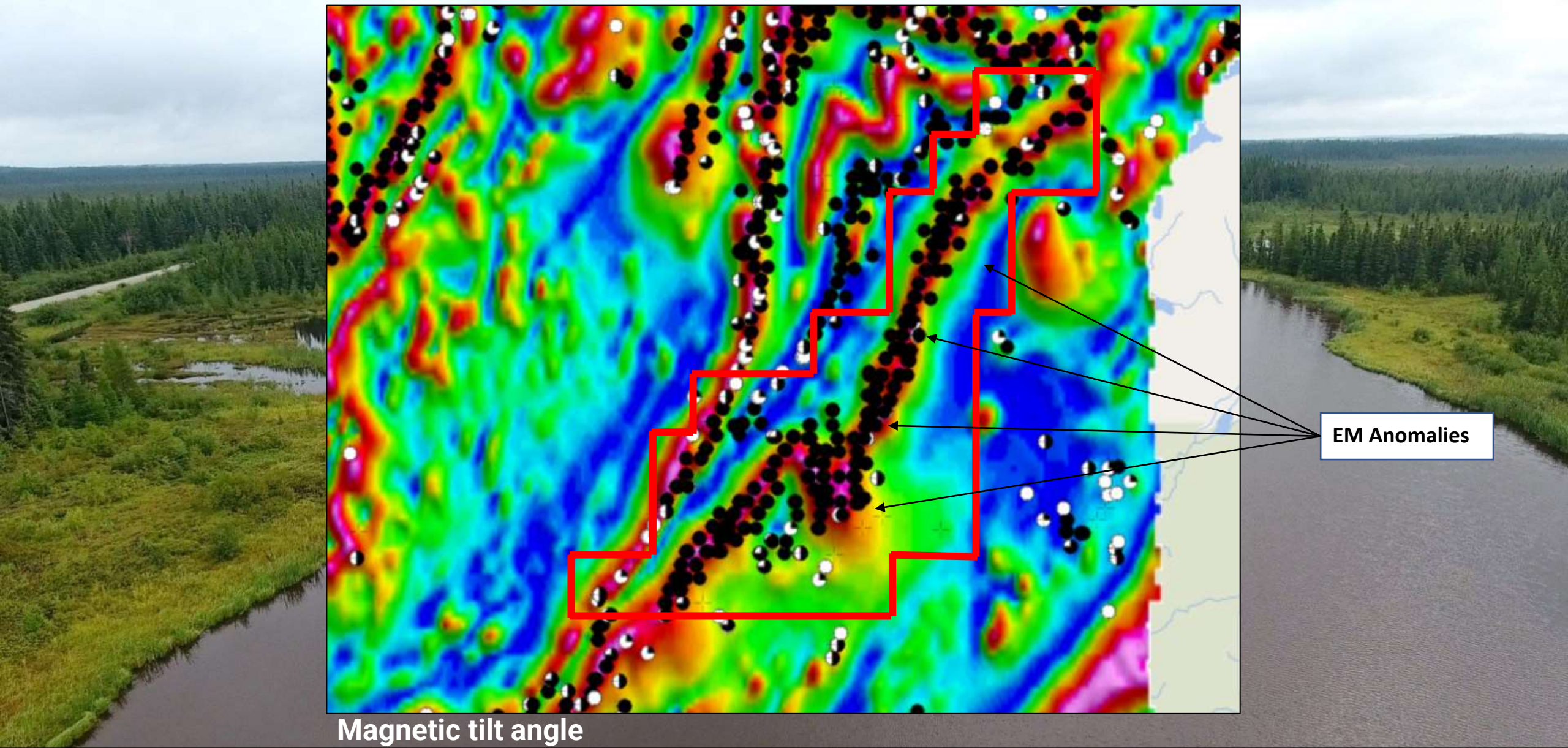
Vertical gradient of residual magnetic field



Magnetic analytic signal

# Geophysics



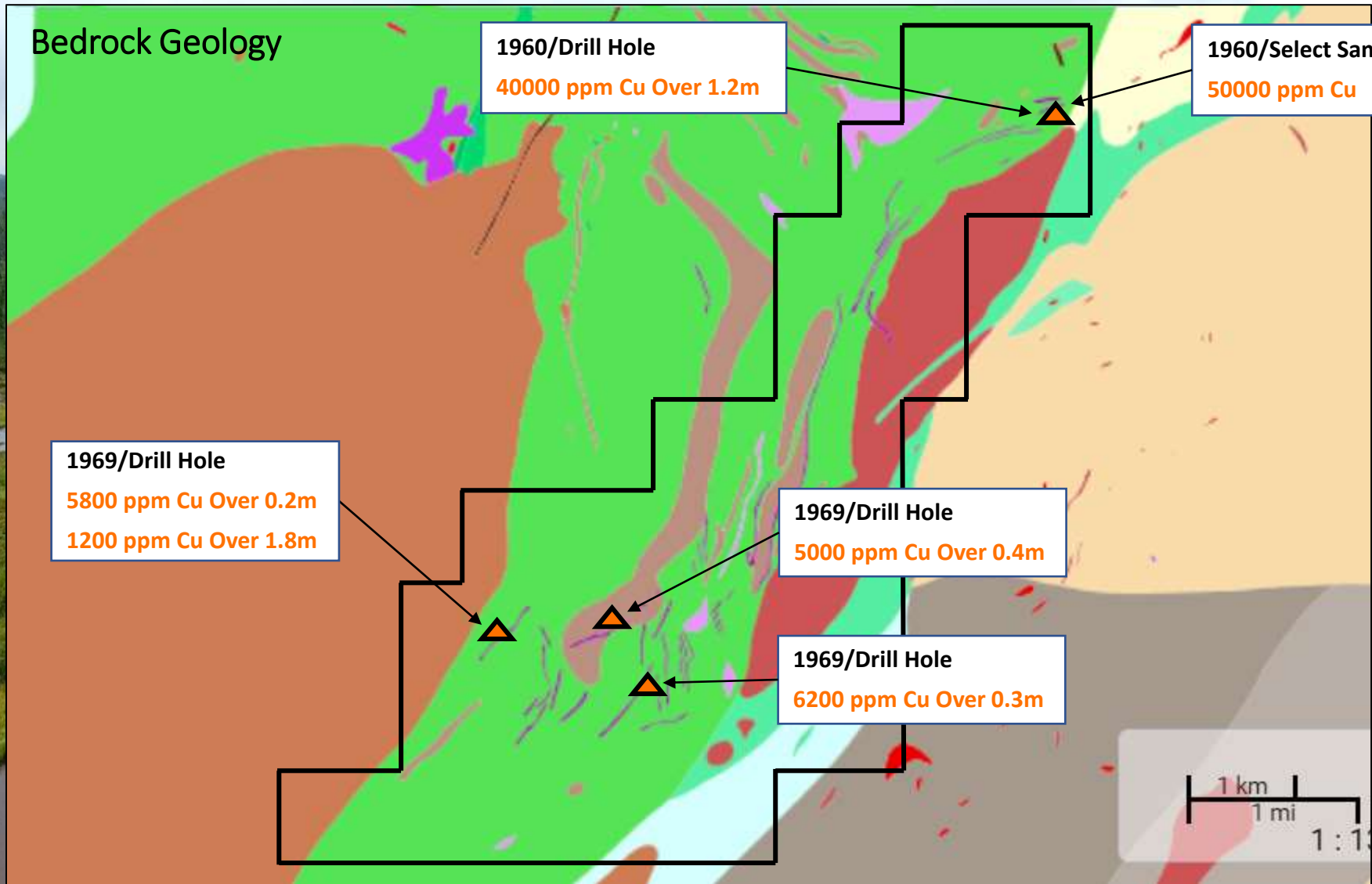


Magnetic tilt angle

EM Anomalies

# Geophysics





Historic Diamond Drill Programs and Grab Sampling Programs Confirms Copper Mineralization

**Drill Hole: P75**

- 0.5% Cp over 1 foot

From 570 ft to 571 ft

- 0.5% Cp over 1 foot

From 581 ft to 582 ft

- 0.25% Cp over 2ft

From 591 ft to 593 ft

- 0.5% Cp over 25 ft

From 568 ft to 593 ft

GM: 26016

**Drill Hole: P81**

- 0.5% Cp over 5 ft

From 105 ft to 110 ft

GM: 26016

**Drill Hole: P.62**

- 10% Po Py Cp over 4 ft

From 170 ft to 174 ft

GM: 25945

**Drill Hole: P77**

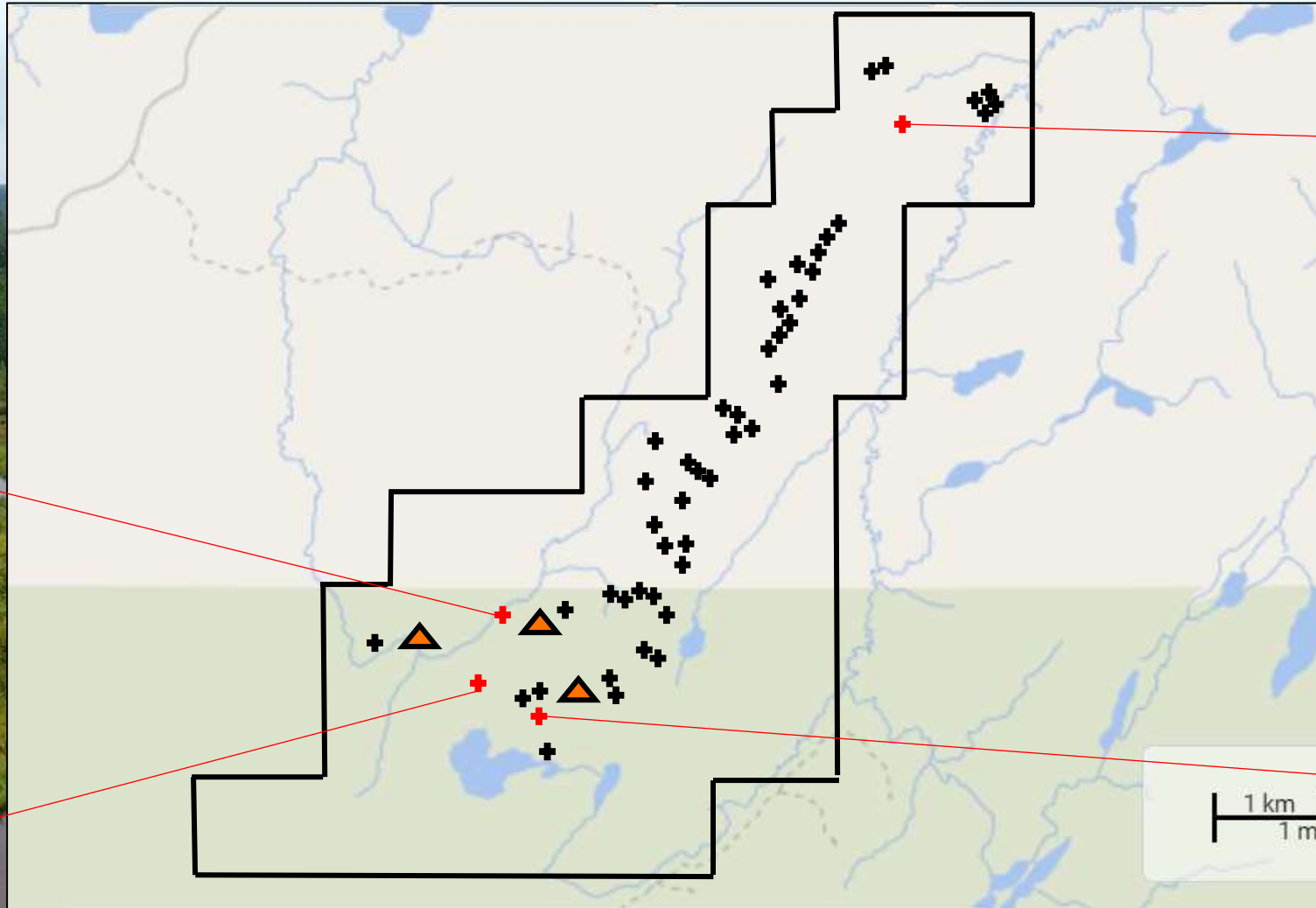
- 0.5% Cp over 1 foot

From 282 ft to 283 ft

7% Cp over 3 ft

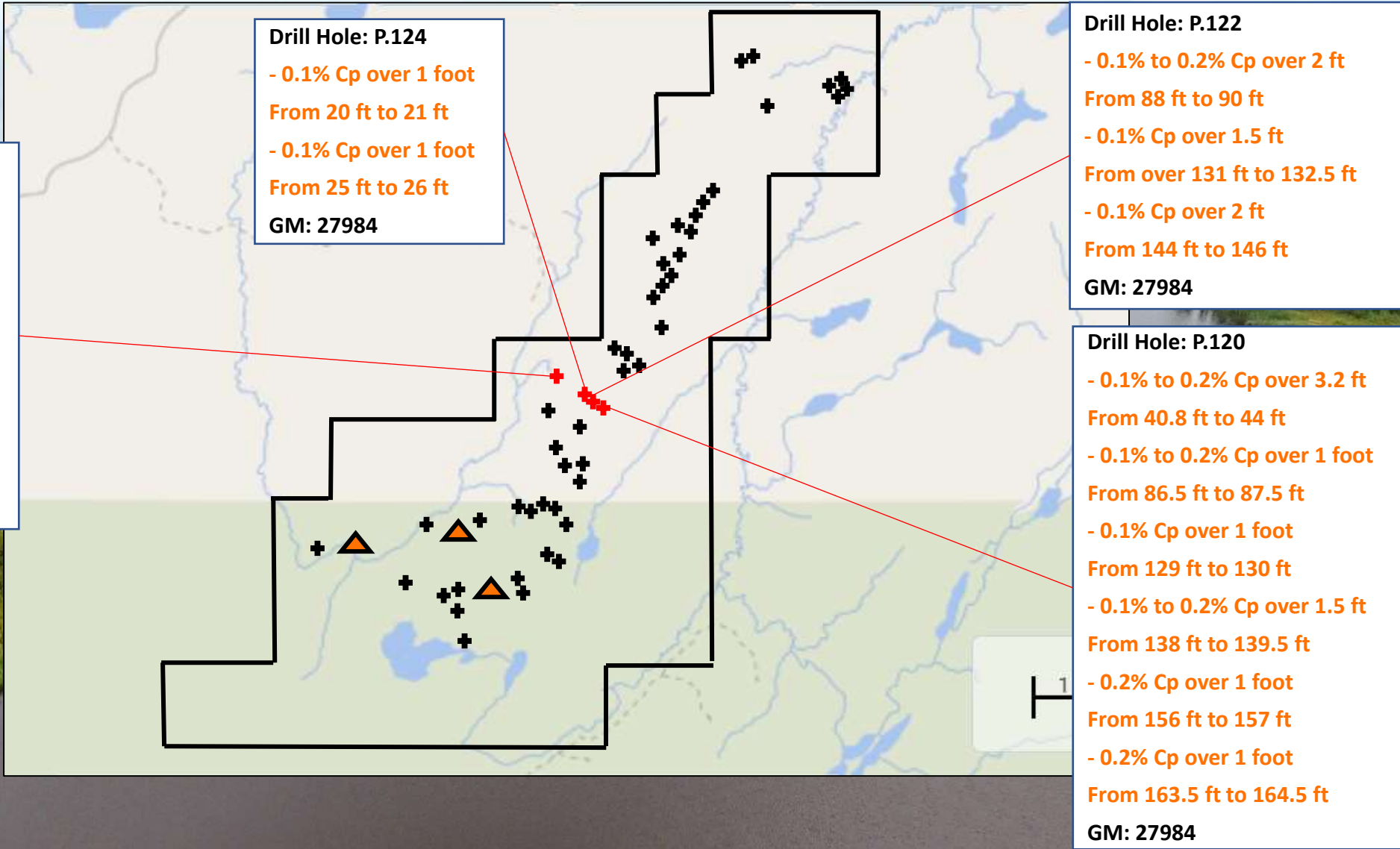
From 283 ft to 286 ft

GM: 26016



# Historic Diamond Drill Programs and Grab Sampling Programs Confirms Copper Mineralization





# Historic Diamond Drill Programs and Grab Sampling Programs Confirms Copper Mineralization



**Drill Hole: P.128**

- 0.1% Cp over 1 foot  
From 27 ft to 28 ft
- 0.1% Cp over 1 foot  
From 95 ft to 96 ft
- 0.2% Cp over 3 ft  
From 98 ft to 101 ft
- 0.3% Cp over 2 ft  
From 101 ft to 103 ft
- 0.5% Cp over 2 ft  
From 103 ft to 105 ft
- 0.1% Cp over 1 foot  
From 112 ft to 113 ft
- 0.1% Cp over 1.5 ft  
From 117.5 ft to 119 ft

GM: 27984

**Drill Hole: P.131**

- 0.3% Cp over 1.5 ft  
From 122 ft to 123.5 ft
- 0.2% Cp over 1 foot  
From 124.5 ft to 125.5 ft
- 0.2% Cp over 1.5 ft  
From 128 ft to 129.5 ft
- 0.2% Cp over 1 foot  
From 124.5 ft to 125.5 ft
- 0.2% Cp over 4.5 ft  
From 128 ft to 132.5 ft
- 0.2% Cp over 1 foot  
From 141 ft to 142 ft

GM: 27984

**Drill Hole: P.132**

- 0.1% to 0.2% Cp over 2 ft  
From 92 ft to 94 ft
- 0.1% to 0.2% Cp over 1.5 ft  
From 95 ft to 96.5 ft
- 0.2% to 0.3% Cp over 2.5 ft  
From 96 ft to 99 ft
- 0.5% Cp over 1 foot  
From 99 ft to 100 ft
- 0.2% to 0.7% Cp over 1.5 ft  
From 100 ft to 101.5 ft
- 0.1% Cp over 9 ft  
From 103 ft to 112 ft
- 0.2% Cp over 5 ft  
From 112 ft to 117 ft
- 0.2% to 0.3% Cp over 25 ft  
From 92 ft to 117 ft

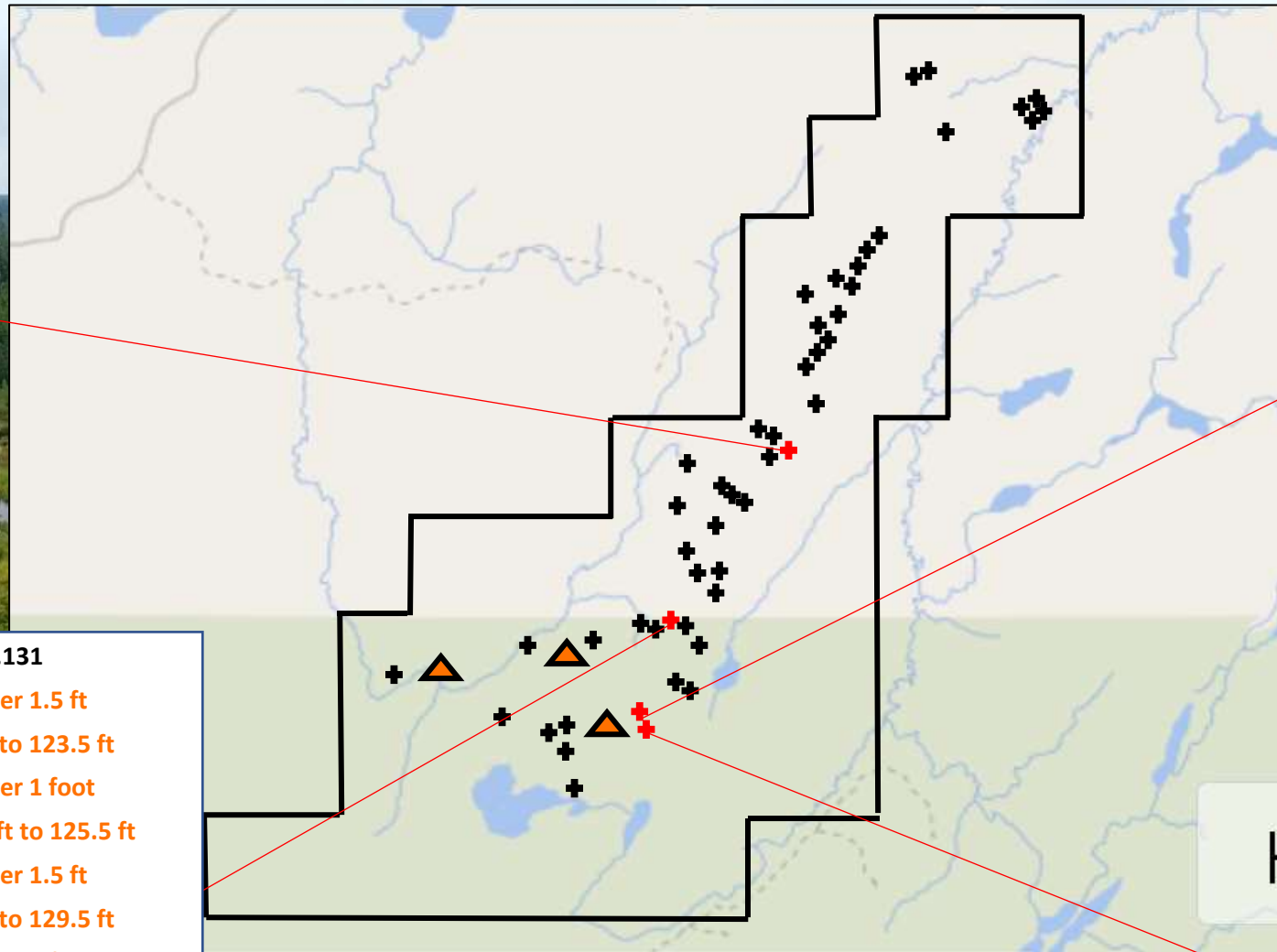
GM: 27984

**Drill Hole: P.135**

- 0.3% Cp over 2 ft  
From 85 ft to 87 ft
- 0.5% to 1% Cp over 3 ft  
From 127 ft to 130 ft
- 0.1% Cp over 1.5 ft  
From 155 ft to 156.5 ft

GM: 27984

# Historic Diamond Drill Programs and Grab Sampling Programs Confirms Copper Mineralization



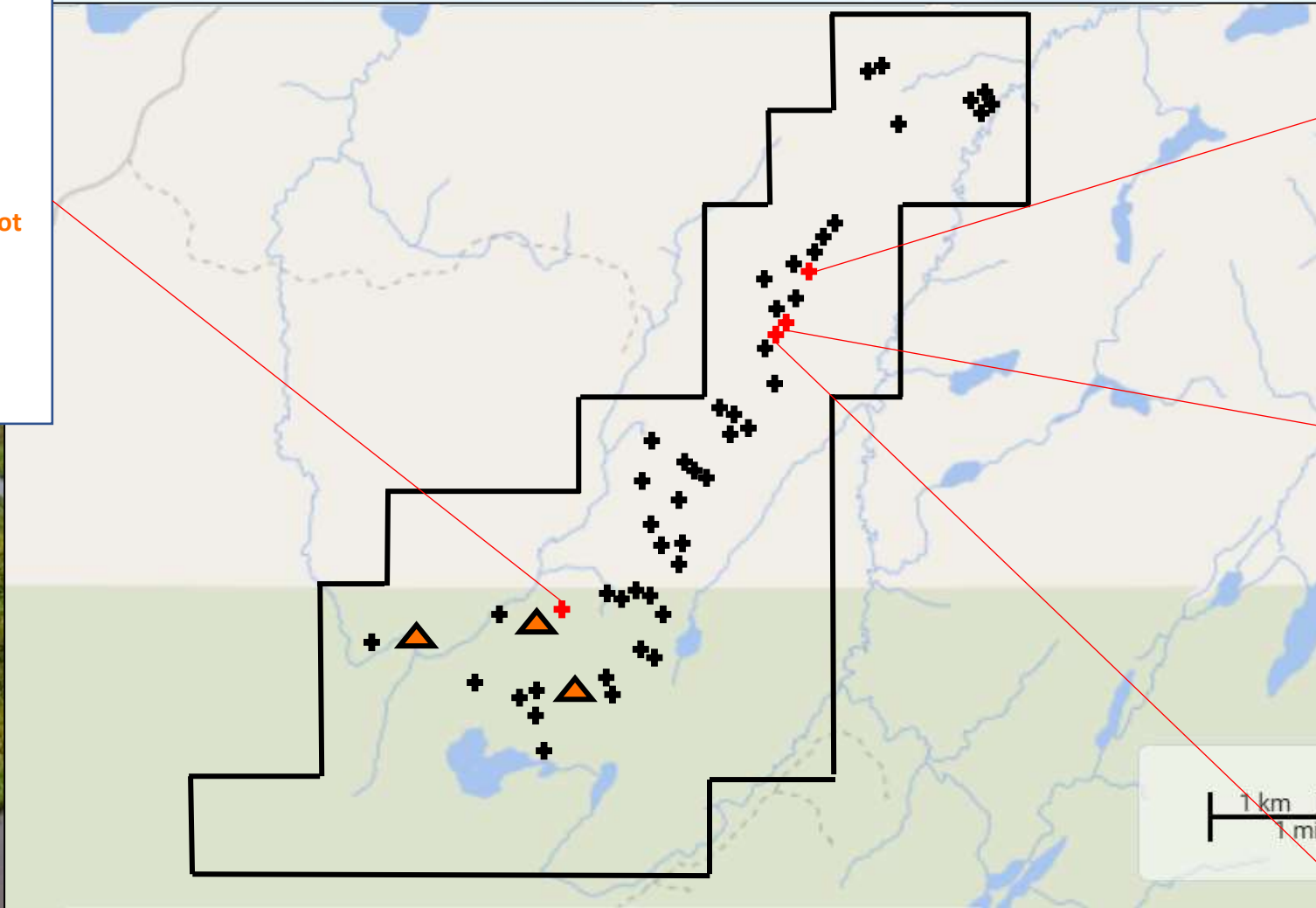


**Drill Hole: P.139**

- 0.1% Cp over 8 ft
  - From 42 ft to 50 ft
  - 0.2% Cp over 3.5 ft
  - From 89 ft to 92.5 ft
  - 0.4% to 0.5% Cp over 1 foot
  - From 96 ft to 97 ft
  - 0.2% Cp over 96 ft
  - From 29 ft to 125 ft
- GM: 27984**

**Drill Hole: P.141**

- 0.2% Cp over 1 foot
  - From 65 ft to 66 ft
  - 0.2% Cp over 1.5 ft
  - From 86.5 ft to 88 ft
  - 0.3% to 0.4% Cp over 4 ft
  - From 90 ft to 94 ft
- GM: 27984**



**Drill Hole: P.144**

- 0.2% to 0.3% Cp over 2.5 ft
  - From 73 ft to 75.5 ft
  - 0.2% Cp over 1 foot
  - From 75.5 ft to 76.5 ft
- GM: 27984**

**Drill Hole: P 58**

- 1% Cp over 16 ft
  - From 21 ft to 37 ft
  - 4%-5% Po Py Cp over 7 ft
  - From 86 ft to 93 ft
  - 3% Po Py Cp over 5 ft
  - From 106 ft to 111 ft
- GM: 26019**

**Drill Hole: P 88**

- 0.5% Cp over 2 ft
  - From 196 ft to 198 ft
  - 0.5% Cp over 1 foot
  - From 205 ft to 206 ft
  - 0.2% Cp over 3 ft
  - From 209 ft to 212 ft
  - 0.2 % Cp over 4 ft
  - From 226 ft to 230 ft
  - 0.5% Cp over 88 ft
  - From 189 ft to 277 ft
- GM: 26019**

# Historic Diamond Drill Programs and Grab Sampling Programs Confirms Copper Mineralization