



NEVADA DIVISION OF
**ENVIRONMENTAL
PROTECTION**

STATE OF NEVADA
Department of Conservation & Natural Resources

Steve Sisolak, Governor
Bradley Crowell, Director
Greg Lovato, Administrator

May 18, 2022

Jon Maxwell
Owner/General Manager
Knox Excavating
1165 Sawmill Rd., Unit A
Gardnerville, NV 89460

**RE: Notification of Issuance of Class II General Air Quality Operating Permit for
Temporary Construction Sources AP1442-4374.05, FIN A2341, Air Case 11222 –
Knox Excavation**

Dear Mr. Maxwell:

The Nevada Division of Environmental Protection – Bureau of Air Pollution Control (BAPC) has reviewed the application submitted by Knox Excavation on May 13, 2022 for the above-referenced operating permit under legal authority from Nevada Revised Statutes (NRS) 445B.100 through 445B.640, inclusive, and pursuant to regulations in Nevada Administrative Code (NAC) 445B.001 through 445B.3689, inclusive. Based upon technical review and recommendation, I hereby issue the operating permit with appropriate restrictions. Enclosed is your copy of the operating permit which must be posted conspicuously at the facility.

In accordance with NRS 445B.340 and NAC 445B.890, you may appeal the Department's issuance of the operating permit within 10 days after you receive the operating permit. Appeals may be filed with the State Environmental Commission located at 901 S. Stewart Street, Carson City, Nevada 89701. For questions regarding appeals, call (775) 687-9374.

Please review the operating permit carefully and ensure you understand all conditions, restrictions, monitoring, recordkeeping, and other requirements. If you have any questions, contact me at (775) 687-9540 or tsoleta@ndep.nv.gov.

Sincerely,

Tanya Soleta, P.E.
Supervisor, Permitting Branch
Bureau of Air Pollution Control

Enclosure: Class II Air Quality Operating Permit AP1442-4374.05
Certified Mail No. 9171 9690 0935 0241 6398 44



Bureau of Air Pollution Control

901 SOUTH STEWART STREET, SUITE 4001

CARSON CITY, NEVADA 89701-5249

p: 775-687-9349 • www.ndep.nv.gov/bapc

Permit No. AP 1442-4374.05

CLASS II GENERAL AIR QUALITY OPERATING PERMIT FOR TEMPORARY CONSTRUCTION SOURCES

Issued to: KNOX EXCAVATING

Mailing Address: 1165 SAWMILL RD., UNIT A, GARDNERVILLE, NV 89410

Section I. Applicability

A. Class II general permit (NAC 445B.3477)(*Federally Enforceable SIP Requirement*)

1. The Director may issue a Class II general permit covering numerous similar stationary sources.
2. A Class II general permit must set forth the criteria by which stationary sources may qualify for the Class II general permit.
3. After the effective date of a Class II general permit, the owner or operator of any stationary source that meets the criteria set forth in the Class II general permit may request authority to operate under the Class II general permit. The request must be in writing and must include all the information required by the Class II general permit.
4. The Director shall grant or deny authority to operate under a Class II general permit within 30 days after his or her receipt of a request for such authority. The Director's decision to grant or deny an application for authority to operate under the terms of a Class II general permit is not subject to the requirements of NAC 445B.3457.
5. A person may challenge the provisions of a Class II general permit only at the time the Class II general permit is issued. The Director's grant or denial of authority to operate under a Class II general permit to a stationary source or stationary sources does not provide an opportunity for an administrative review or a judicial review of the Class II general permit.
6. The Director shall not grant authority to operate under a Class II general permit to an affected source.
7. The term of a Class II general permit is 5 years.
8. The authority to operate under a Class II general permit expires after 5 years. An owner or operator of a stationary source operating under the authority of a Class II general permit shall apply to renew the authority to operate under the Class II general permit at least 30 days before the authorization expires.
9. A stationary source which obtains authorization to operate under a Class II general permit but is later determined not to qualify under the conditions of the Class II general permit may be subject to an action enforcing the prohibition against operating without a permit.

B. Qualifying Temporary Source (NAC 445B.3477)(*Federally Enforceable SIP Requirement*)

Under the authority of NAC 445B.3477 as reproduced in this section, the following temporary construction sources qualify to operate under this Class II general permit:

A qualifying **temporary source** as defined by NAC 445B.194 and reproduced in this section may operate under the conditions and provisions set forth in this Class II general permit for the following types of emission units:

1. **Crushers, screens, and conveyors operated only for the processing of nonmetallic minerals;**
2. **Hot mix asphalt plants with crushers, screens, and conveyors (may include lime marination);**
3. **Hot mix asphalt plants without crushers, screens, and conveyors (may include lime marination)**
4. **Hot mix asphalt plants with crushers, screens, and conveyors, and concrete batch plants (may include lime marination); or**
5. **Concrete batch plants (may include crushers, screens, and conveyors).**

C. Temporary source (NAC 445B.194)(*Federally Enforceable SIP Requirement*)

"Temporary source" means any building, structure, facility or installation which:

1. Emits or may emit any regulated air pollutant;
2. May be moved from one location to another;
3. Is located or operated in a location for a period of less than 12 months; and
4. Is not an affected source.



Bureau of Air Pollution Control

Permit No. AP 1442-4374.05

**CLASS II GENERAL AIR QUALITY OPERATING PERMIT
FOR TEMPORARY CONSTRUCTION SOURCES**

Section I. Applicability (continued)

- D. Stationary source (NAC 445B.187)(*Federally Enforceable SIP Requirement*)
1. "Stationary source" means all buildings, structures, facilities and installations, including temporary sources, which:
 - a. Belong to the same major industrial groupings described in the Standard Industrial Classification Manual, as incorporated by reference in NAC 445B.221;
 - b. Are located on one or more contiguous or adjacent properties;
 - c. Are owned or operated by the same person or by persons under common control; and
 - d. Emit or may emit any regulated air pollutant that is regulated under 42 U.S.C. §§ 7401 to 7671q, inclusive, or NAC 445B.001 to 445B.3689, inclusive. [NAC adopted as of October 2016 includes NAC 445B.001 to 445B.390, inclusive]
 2. Contracted operations that support the primary operations of the stationary source are part of the stationary source, except that temporary construction activities, including, without limitation, the construction of emission units, are not part of the stationary source.
 3. The term does not include motor vehicles, nonroad engines and nonroad vehicles.
- E. Request for change of location of emission unit (NAC 445B.331)(*Federally Enforceable SIP Requirement*)
1. A request for a change of the location of an emission unit must be made in writing to the Director and submitted with the fee for each operating permit at least 10 days before each change of location. An owner or operator must not operate the emission unit at the new location until the Director approves the location.
- F. Exceptions and Additional Requirements (NAC 445B.22097)(*Federally Enforceable SIP Requirement*)
- Under the authority of NAC 445B.22097, the following exceptions and additional requirements apply to this Class II general permit:
1. For temporary sources applying to operate under this general permit in the Class II General Special Use Area described in this section, the following constraints apply:
 - a. The Director will require a 30 day time period to conduct an Environmental Evaluation to demonstrate compliance with the Nevada Ambient Air Quality Standards for any regulated air pollutant.
 - b. If compliance with the Nevada Ambient Air Quality Standards for any regulated air pollutant cannot be demonstrated under the requirements of this Class II general permit, authorization to operate under this Class II general permit will not be approved. A Class II Air Quality Operating Permit must be applied for and approved prior to operation.



Bureau of Air Pollution Control

Permit No. AP 1442-4374.05

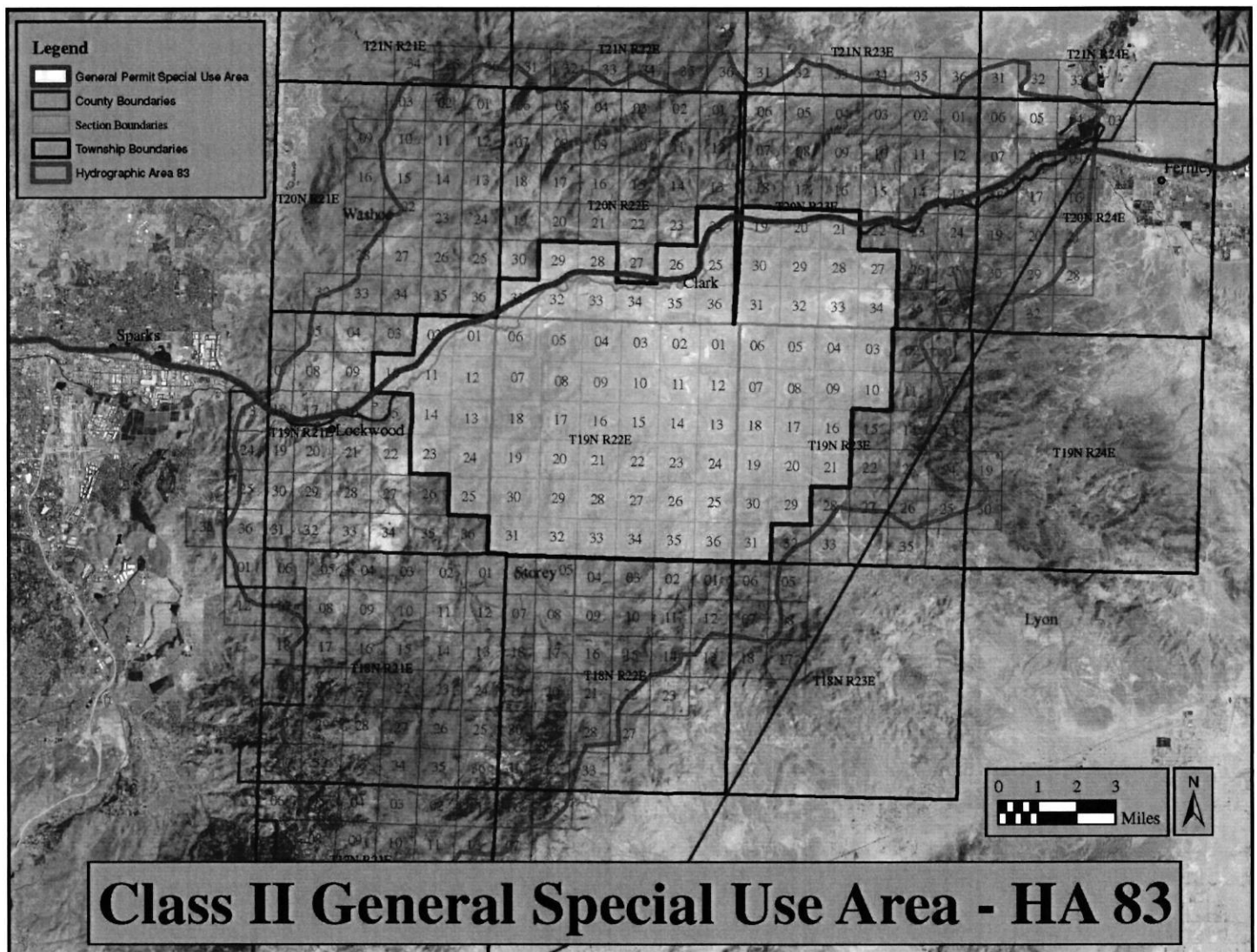
CLASS II GENERAL AIR QUALITY OPERATING PERMIT FOR TEMPORARY CONSTRUCTION SOURCES

Section I. Applicability (continued)

F. Exceptions and Additional Requirements (NAC 445B.22097)(*Federally Enforceable SIP Requirement*)(continued)

2. Tracy Segment – Hydrographic Area (HA) 83

Township	Range	Sections
19 North	21 East	1, 2, 10 through 14, and 23 through 25
19 North	22 East	All Sections
19 North	23 East	3 through 10, 16 through 21, and 29 through 31
20 North	22 East	24 through 26, 28, 29, and 31 through 36
20 North	23 East	19 through 21, and 27 through 34



End of Applicability



Bureau of Air Pollution Control

Permit No. AP 1442-4374.05

CLASS II GENERAL AIR QUALITY OPERATING PERMIT FOR TEMPORARY CONSTRUCTION SOURCES

Section II. General Provisions

- A. Visible emissions: Maximum opacity; determination and monitoring of opacity (NAC 445B.22017)(*Federally Enforceable SIP Requirement*)
1. Except as otherwise provided in this section and NAC 445B.2202, no owner or operator may cause or permit the discharge into the atmosphere from any emission unit which is of an opacity equal to or greater than 20 percent. Opacity must be determined by one of the following methods:
 - a. If opacity is determined by a visual measurement, it must be determined as set forth in Reference Method 9 in Appendix A of 40 C.F.R. Part 60.
 - b. If a source uses a continuous monitoring system for the measurement of opacity, the data must be reduced to 6-minute averages as set forth in 40 C.F.R. § 60.13(h).
 2. The provisions of this section and NAC 445B.2202 do not apply to that part of the opacity that consists of uncombined water. The burden of proof to establish the application of this exemption is upon the person seeking to come within the exemption.
- B. Visible emissions: Exceptions for stationary sources (NAC 445B.2202)(*Federally Enforceable SIP Requirement*)
- The provisions of NAC 445B.22017 do not apply to:
1. Smoke from the open burning described in NAC 445B.22067;
 2. Smoke discharged in the course of training air pollution control inspectors to observe visible emissions, if the facility has written approval of the Commission;
 3. Emissions from an incinerator as set forth in NAC 445B.2207; or
 4. Emissions of stationary diesel-powered engines during warm-up for not longer than 15 minutes to achieve operating temperatures.
- C. Emissions of particulate matter: Fugitive dust (NAC 445B.22037)(*Federally Enforceable SIP Requirement*)
1. No person may cause or permit the handling, transporting or storing of any material in a manner which allows or may allow controllable particulate matter to become airborne.
 2. Except as otherwise provided in subsection 4, no person may cause or permit the construction, repair, demolition, or use of unpaved or untreated areas without first putting into effect an ongoing program using the best practical methods to prevent particulate matter from becoming airborne. As used in this subsection, "best practical methods" includes, but is not limited to, paving, chemical stabilization, watering, phased construction and revegetation.
 3. Except as otherwise provided in subsection 4, no person may disturb or cover 5 acres or more of land or its topsoil until the person has obtained an operating permit for surface area disturbance to clear, excavate, or level the land or to deposit any foreign material to fill or cover the land.
 4. The provisions of subsections 2 and 3 do not apply to:
 - a. Agricultural activities occurring on agricultural land; or
 - b. Surface disturbances authorized by a permit issued pursuant to NRS 519A.180 which occur on land which is not less than 5 acres or more than 20 acres.
- D. Odors (NAC 445B.22087)(*State Only Requirement*)
1. No person may discharge or cause to be discharged, from any stationary source, any material or regulated air pollutant which is or tends to be offensive to the senses, injurious or detrimental to health and safety, or which in any way interferes with or prevents the comfortable enjoyment of life or property.
 2. The Director shall investigate an odor when 30 percent or more of a sample of the people exposed to it believe it to be objectionable in usual places of occupancy. The sample must be at least 20 people or 75 percent of those exposed if fewer than 20 people are exposed.
 3. The Director shall deem the odor to be a violation if he or she is able to make two odor measurements within a period of 1 hour. These measurements must be separated by at least 15 minutes. An odor measurement consists of a detectable odor after the odorous air has been diluted with eight or more volumes of odor-free air.
- E. Prohibited Conduct: Concealment of emissions (NAC 445B.225)(*Federally Enforceable SIP Requirement*)
1. No person may install, construct or use any device which conceals any emission without reducing the total release of regulated air pollutants to the atmosphere.



Bureau of Air Pollution Control

Permit No. AP 1442-4374.05

CLASS II GENERAL AIR QUALITY OPERATING PERMIT FOR TEMPORARY CONSTRUCTION SOURCES

Section II. General Provisions (continued)

- F. Prohibited conduct: Operation of source without required equipment; removal or modification of required equipment; modification of required procedure (NAC 445B.227)(*Federally Enforceable SIP Requirement*)
Except as otherwise provided in NAC 445B.001 to 445B.3497, inclusive, [NAC adopted as of October 2016 includes NAC 445B.001 to 445B.390, inclusive], no person may:
1. Operate a stationary source of air pollution unless the control equipment for air pollution which is required by applicable requirements or conditions of the permit is installed and operating.
 2. Disconnect, alter, modify or remove any of the control equipment for air pollution or modify any procedure required by an applicable requirement or condition of the permit.
- G. Excess emissions: Scheduled maintenance, testing or repairs; notification of Director; malfunction, upset, start-up, shutdown or human error (NAC 445B.232)(*State Only Requirement*)
1. Scheduled maintenance or testing or scheduled repairs which may result in excess emissions of regulated air pollutants prohibited by NAC 445B.001 to 445B.390, inclusive, must be approved in advance by the Director and performed during a time designated by the Director as being favorable for atmospheric ventilation.
 2. Each owner or operator shall notify the Director of the proposed time and expected duration at least 30 days before any scheduled maintenance or testing which may result in excess emissions of regulated air pollutants prohibited by NAC 445B.001 to 445B.390, inclusive. The scheduled maintenance or testing must not be conducted unless the scheduled maintenance or testing is approved pursuant to subsection 1.
 3. Each owner or operator shall notify the Director of the proposed time and expected duration at least 24 hours before any scheduled repairs which may result in excess emissions of regulated air pollutants prohibited by NAC 445B.001 to 445B.390, inclusive. The scheduled repairs must not be conducted unless the scheduled repairs are approved pursuant to subsection 1.
 4. Each owner or operator shall notify the Director of any excess emissions within 24 hours after any malfunction or upset of the process equipment or equipment for controlling pollution or during start-up or shutdown of that equipment.
 5. Each owner or operator shall provide the Director, within 15 days after any malfunction, upset, start-up, shutdown or human error which results in excess emissions, sufficient information to enable the Director to determine the seriousness of the excess emissions. The information must include at least the following:
 - a. The identity of the stack or other point of emission, or both, where the excess emissions occurred.
 - b. The estimated magnitude of the excess emissions expressed in opacity or in the units of the applicable limitation on emission and the operating data and methods used in estimating the magnitude of the excess emissions.
 - c. The time and duration of the excess emissions.
 - d. The identity of the equipment causing the excess emissions.
 - e. If the excess emissions were the result of a malfunction, the steps taken to remedy the malfunction and the steps taken or planned to prevent the recurrence of the malfunction.
 - f. The steps taken to limit the excess emissions.
 - g. Documentation that the equipment for controlling air pollution, process equipment or processes were at all times maintained and operated, to a maximum extent practicable, in a manner consistent with good practice for minimizing emissions.
 6. Each owner or operator shall ensure that any notification or related information submitted to the Director pursuant to this section is provided in a format specified by the Director.
- H. Notification of planned construction or reconstruction (NAC 445B.250)(*Federally Enforceable SIP Requirement*)
Any owner or operator subject to the provisions of NAC 445B.001 to 445B.3689, inclusive, [NAC adopted as of October 2016 includes NAC 445B.001 to 445B.390, inclusive], shall furnish the Director written notification of:
1. The actual date of initial start-up of an affected facility, postmarked within 15 days after such date.



Bureau of Air Pollution Control

Permit No. AP 1442-4374.05

**CLASS II GENERAL AIR QUALITY OPERATING PERMIT
FOR TEMPORARY CONSTRUCTION SOURCES**

Section II. General Provisions (continued)

I. Testing and sampling (NAC 445B.252)(*Federally Enforceable SIP Requirement*)

1. To determine compliance with NAC 445B.001 to 445B.3497, inclusive, [NAC adopted as of October 2016 includes NAC 445B.001 to 445B.390, inclusive], before the approval or the continuance of an operating permit or similar class of permits, the Director may either conduct or order the owner of any stationary source to conduct or have conducted such testing and sampling as the Director determines necessary. Testing and sampling or either of them must be conducted and the results submitted to the Director within 60 days after achieving the maximum rate of production at which the affected facility will be operated, but not later than 180 days after initial start-up of the facility and at such other times as may be required by the Director.
2. Tests of performance must be conducted and data reduced in accordance with the methods and procedures of the test contained in each applicable subsection of this section unless the Director:
 - a. Specifies or approves, in specific cases, the use of a reference method with minor changes in methodology;
 - b. Approves the use of an equivalent method;
 - c. Approves the use of an alternative method, the results of which the Director has determined to be adequate for indicating whether a specific stationary source is in compliance; or
 - d. Waives the requirement for tests of performance because the owner or operator of a stationary source has demonstrated by other means to the Director's satisfaction that the affected facility is in compliance with the standard.
3. Tests of performance must be conducted under such conditions as the Director specifies to the operator of the plant based on representative performance of the affected facility. The owner or operator shall make available to the Director such records as may be necessary to determine the conditions of the test of performance. Operations during periods of start-up, shutdown and malfunction must not constitute representative conditions of a test of performance unless otherwise specified in the applicable standard.
4. The owner or operator of an affected facility shall give notice to the Director 30 days before the test of performance to allow the Director to have an observer present. A written testing procedure for the test of performance must be submitted to the Director at least 30 days before the test of performance to allow the Director to review the proposed testing procedures.
5. Each test of performance must consist of at least three separate runs using the applicable method for that test. Each run must be conducted for the time and under the conditions specified in the applicable standard. For the purpose of determining compliance with an applicable standard, the arithmetic means of results of the runs apply. In the event of forced shutdown, failure of an irreplaceable portion of the sampling train, extreme meteorological conditions or other circumstances with less than three valid samples being obtained, compliance may be determined using the arithmetic mean of the results of the other two runs upon the Director's approval.
6. All testing and sampling will be performed in accordance with recognized methods and as specified by the Director.
7. The cost of all testing and sampling and the cost of all sampling holes, scaffolding, electric power and other pertinent allied facilities as may be required and specified in writing by the Director must be provided and paid for by the owner of the stationary source.
8. All information and analytical results of testing and sampling must be certified as to their truth and accuracy and as to their compliance with all provisions of these regulations, and copies of these results must be provided to the Director no later than 60 days after the testing or sampling, or both.
9. Notwithstanding the provisions of subsection 2, the Director shall not approve an alternative method or equivalent method to determine compliance with a standard or emission limitation contained in Part 60, 61 or 63 of Title 40 of the Code of Federal Regulations for:
 - a. An emission unit that is subject to a testing requirement pursuant to Part 60, 61 or 63 of Title 40 of the Code of Federal Regulations; or
 - b. An affected source.



Bureau of Air Pollution Control

Permit No. AP 1442-4374.05

CLASS II GENERAL AIR QUALITY OPERATING PERMIT FOR TEMPORARY CONSTRUCTION SOURCES

Section II. General Provisions (continued)

J. Prohibited acts; penalty; establishment of violation; request for prosecution (NRS 445B.470)(*State Only Requirement*)

1. A person shall not knowingly:
 - a. Violate any applicable provision, the terms or conditions of any permit or any provision for the filing of information;
 - b. Fail to pay any fee;
 - c. Falsify any material statement, representation or certification in any notice or report; or
 - d. Render inaccurate any monitoring device or method, required pursuant to the provisions of NRS 445B.100 to 445B.450, inclusive, or 445B.470 to 445B.640, inclusive, or any regulation adopted pursuant to those provisions.
2. Any person who violates any provision of subsection 1 shall be punished by a fine of not more than \$10,000 for each day of the violation.
3. The burden of proof and degree of knowledge required to establish a violation of subsection 1 are the same as those required by 42 U.S.C. § 7413(c), as that section existed on October 1, 1993.
4. If, in the judgment of the Director of the Department or the Director's designee, any person is engaged in any act or practice which constitutes a criminal offense pursuant to NRS 445B.100 to 445B.640, inclusive, the Director of the Department or the designee may request that the Attorney General or the district attorney of the county in which the criminal offense is alleged to have occurred institute by indictment or information a criminal prosecution of the person.
5. If, in the judgment of the control officer of a local air pollution control board, any person is engaged in such an act or practice, the control officer may request that the district attorney of the county in which the criminal offense is alleged to have occurred institute by indictment or information a criminal prosecution of the person.

K. Violations: Acts constituting; notice (NAC 445B.275)(*Federally Enforceable SIP Requirement*)

1. Failure to comply with any requirement of NAC 445B.001 to 445B.3791, inclusive, [NAC adopted as of October 2016 includes NAC 445B.001 to 445B.390, inclusive] any applicable requirement or any condition of an operating permit constitutes a violation. As required by NRS 445B.450, the Director shall issue a written notice of an alleged violation to any owner or operator for any violation, including, but not limited to:
 - a. Failure to apply for and obtain an operating permit;
 - b. Failure to construct a stationary source in accordance with the application for an operating permit as approved by the Director;
 - c. Failure to construct or operate a stationary source in accordance with any condition of an operating permit;
 - d. Commencing construction or modification of a stationary source without applying for and receiving an operating permit or a modification of an operating permit as required by NAC 445B.001 to 445B.3497, inclusive, [NAC adopted as of October 2016 includes NAC 445B.001 to 445B.3477, inclusive], or a mercury operating permit to construct as required by NAC 445B.3611 to 445B.3689, inclusive;
 - e. Failure to comply with any requirement for recordkeeping, monitoring, reporting or compliance certification contained in an operating permit; or
 - f. Failure to pay fees as required by NAC 445B.327 or 445B.3689.
2. The written notice must specify the provision of NAC 445B.001 to 445B.3791, inclusive, [NAC adopted as of October 2016 includes NAC 445B.001 to 445B.390, inclusive], the condition of the operating permit or the applicable requirement that is being violated.
3. Written notice shall be deemed to have been served if delivered to the person to whom addressed or if sent by registered or certified mail to the last known address of the person.

L. Operating permits: Imposition of more stringent standards for emissions (NAC 445B.305)(*Federally Enforceable SIP Requirement*)

1. The Director may impose standards for emissions on a proposed stationary source that are more stringent than those found in NAC 445B.001 to 445B.3689, inclusive, [NAC adopted as of October 2016 includes NAC 445B.001 to 445B.390, inclusive], as a condition of approving an operating permit for the proposed stationary source.



Bureau of Air Pollution Control

Permit No. AP 1442-4374.05

CLASS II GENERAL AIR QUALITY OPERATING PERMIT FOR TEMPORARY CONSTRUCTION SOURCES

Section II. General Provisions (continued)

M. Contents of operating permits: Exception for operating permits to construct; required conditions (NAC 445B.315)(*Federally Enforceable SIP Requirement*)

1. Each of the conditions and requirements of the operating permit is severable, and if any are held invalid, the remaining conditions and requirements continue in effect.
2. The holder of the operating permit shall comply with all conditions of the operating permit. Any noncompliance constitutes a violation and is a ground for:
 - a. An action for noncompliance;
 - b. Revising, revoking, reopening and revising, or terminating the operating permit by the Director; or
 - c. Denial of an application for a renewal of the operating permit by the Director.
3. The need to halt or reduce activity to maintain compliance with the conditions of the operating permit is not a defense to noncompliance with any condition of the operating permit.
4. The Director may revise, revoke and reissue, reopen and revise, or terminate the operating permit for cause.
5. The operating permit does not convey any property rights or any exclusive privilege.
6. The holder of the operating permit shall provide the Director, in writing and within a reasonable time, with any information that the Director requests to determine whether cause exists for revising, revoking and reissuing, reopening and revising, or terminating the operating permit, or to determine compliance with the conditions of the operating permit.
7. The holder of the operating permit shall pay fees to the Director in accordance with the provisions set forth in NAC 445B.327 and 445B.331.
8. The holder of the operating permit shall allow the Director or any authorized representative, upon presentation of credentials, to:
 - a. Enter upon the premises of the holder of the operating permit where:
 - i. The stationary source is located;
 - ii. Activity related to emissions is conducted; or
 - iii. Records are kept pursuant to the conditions of the operating permit;
 - b. Have access to and copy, during normal business hours, any records that are kept pursuant to the conditions of the operating permit;
 - c. Inspect, at reasonable times, any facilities, practices, operations or equipment, including any equipment for monitoring or controlling air pollution, that are regulated or required pursuant to the operating permit; and
 - d. Sample or monitor, at reasonable times, substances or parameters to determine compliance with the conditions of the operating permit or applicable requirements.
9. A responsible official of the stationary source shall certify that, based on information and belief formed after a reasonable inquiry, the statements made in any document required to be submitted by any condition of the operating permit are true, accurate and complete.

N. Required contents of permit (NAC 445B.346)(*Federally Enforceable SIP Requirement*)

In addition to the conditions set forth in NAC 445B.315, Class II operating permits must contain, as applicable:

1. Emission limitations and standards, including those operational requirements and limitations that ensure compliance with the conditions of the operating permit.
2. All requirements for monitoring, testing and reporting that apply to the stationary source.
3. A requirement that the owner or operator of the stationary source promptly report any deviations from any requirements of the operating permit.
4. The terms and conditions for any reasonably anticipated alternative operating scenarios identified by the owner or operator of the stationary source in his or her application and approved by the Director. Such terms and conditions must require the owner or operator to keep a contemporaneous log of changes from one alternative operating scenario to another.
5. A schedule of compliance for stationary sources that are not in compliance with any applicable requirement or NAC 445B.001 to 445B.3689, inclusive, [NAC adopted as of October 2016 includes NAC 445B.001 to 445B.390, inclusive], at the time the operating permit is issued, including:
 - a. Semiannual progress reports and a schedule of dates for achieving milestones;
 - b. Prior notice of and explanations for missed deadlines; and
 - c. Any preventive or corrective measures taken.

******End of General Provisions******



Bureau of Air Pollution Control

Permit No. AP 1442-4374.05

CLASS II GENERAL AIR QUALITY OPERATING PERMIT FOR TEMPORARY CONSTRUCTION SOURCES

Section III. General Monitoring, Recordkeeping, and Reporting Conditions

A. Records Retention (NAC 445B.315(3)(b))(Federally Enforceable SIP Requirement)

1. The holder of the operating permit shall retain records of all required monitoring data and supporting information for 5 years after the date of the sample collection, measurement, report or analysis. Supporting information includes all records regarding calibration and maintenance of the monitoring equipment and all original strip-chart recordings for continuous monitoring instrumentation.

B. Deviations (NAC 445B.346(3))(Federally Enforceable SIP Requirement)

1. Under the authority of NAC 445B.346(3), and in addition to the conditions set forth in NAC 445B.315, the owner or operator of the stationary source shall promptly report to the Director any deviations from the requirements of the operating permit. The report to the Director shall include the probable cause of all deviations and any action taken to correct the deviations. For the operating permit, prompt is defined as submittal of a report within 15 days of the deviation. This definition does not alter any reporting requirements as established for reporting of excess emissions as required under NAC 445B.232 as reproduced in **Section II.G. E-mail notifications to: eenotify@ndep.nv.gov**

C. Reporting (NAC 445B.250 and NAC 445B.315(3)(h))(Federally Enforceable SIP Requirement)

Under the authority of NAC 445B.250 and NAC 445B.315(3)(h), the holder of the operating permit shall provide the Director, in writing, the following reports:

1. A report of the actual date of initial startup for all emission units, postmarked not more than 15 days after such date, on the form provided by the Director. Failure to provide the required initial startup report(s) shall result in disapproval of future change of location requests until the report(s) are received, and may subject the holder of the operating permit to a Notice of Alleged Violation in accordance with NAC 445B.275.
2. A report of the Initial Opacity Compliance Demonstration for all emission units as required in **Section V.A.**, postmarked not more than 15 days after completion of the Initial Opacity Compliance Demonstration. Failure to provide the required Initial Opacity Compliance Demonstration report(s) shall result in disapproval of future change of location requests until the report(s) are received, and may subject the holder of the operating permit to a Notice of Alleged Violation in accordance with NAC 445B.275.
3. A report of the performance tests for affected hot mix asphalt plants as required in **Section V.B.** Failure to provide the required performance test report shall result in disapproval of future change of location requests until the report is received, and may subject the holder of the operating permit to a Notice of Alleged Violation in accordance with NAC 445B.275.
4. A report of the actual production and hours of operation within 30 days of the completion of the job, on the form provided by the Director. The report(s) shall be compiled based on each approved location. Failure to provide the required production report(s) shall result in disapproval of future change of location requests until the report(s) are received, and may subject the holder of the operating permit to a Notice of Alleged Violation in accordance with NAC 445B.275.
5. Yearly reports including, but not limited to, throughput, production, fuel consumption, hours of operation, and emissions. These reports shall be submitted on the form provided by the Director for all emission units and systems specified on the form. The completed form must be submitted to the Director no later than March 1 annually for the preceding calendar year.

*****End of General Monitoring, Recordkeeping, and Reporting Conditions*****



Bureau of Air Pollution Control

Permit No. AP 1442-4374.05

CLASS II GENERAL AIR QUALITY OPERATING PERMIT FOR TEMPORARY CONSTRUCTION SOURCES

Section IV. Emission Factors

A. Emission Factors (NAC 445B.305)(*Federally Enforceable SIP Requirement*)

Under the authority of NAC 445B.305, the emission factors listed below are to be used to calculate the potential to emit for operating scenarios authorized by the general permit.

Nonmetallic Minerals Crushing and Screening			
Emission Unit	Emission Factor (lb/ton)		
	PM	PM ₁₀	PM _{2.5}
Loader to Feeder or Bin - Controlled ¹	0.00014	0.000046	0.000013
Loader to Feeder or Bin - Uncontrolled	0.003	0.0011	0.00017
Crusher - Controlled ¹	0.0012	0.00054	0.0001
Screen - Controlled ¹	0.0022	0.00074	0.00005
Conveyor Transfer Point - Controlled ¹	0.00014	0.000046	0.000013

Notes:
 (1) The emission factors listed for controlled emissions require wet dust suppression located at each emission unit and transfer point. Wet dust suppression consists of water sprays, fogging water sprays, fogging water sprays with chemical surfactant, or pneumatic fogging water sprays. Pre-wetting of material does not constitute wet dust suppression.

Hot Mix Asphalt Plant							
Emission Unit	Emission Factor (lb/ton)						
	PM	PM ₁₀	PM _{2.5}	NO _x	SO ₂	CO	VOC
Hot Mix Asphalt Plant - No.2 Fuel Oil Fired Dryer - Controlled ¹	0.045	0.045	0.045	0.05	0.011	0.13	0.032
Hot Mix Asphalt Plant - Natural Gas Fired Dryer - Controlled ¹	0.045	0.045	0.045	0.02	0.003	0.13	0.032
Hot Mix Asphalt Plant - Waste Oil Fired Dryer - Controlled ¹	0.045	0.045	0.045	0.05	0.058	0.13	0.032
Hot Mix Asphalt Plant - No.2 Fuel Oil Fired Dryer - Controlled ²	0.02	0.02	0.02	0.05	0.011	0.13	0.032
Hot Mix Asphalt Plant - Natural Gas Fired Dryer - Controlled ²	0.033	0.033	0.033	0.02	0.003	0.13	0.032
Hot Mix Asphalt Plant - Waste Oil Fired Dryer - Controlled ²	0.033	0.033	0.033	0.05	0.058	0.13	0.032
Cold Aggregate/RAP ⁴ Bin Feeders - Controlled ³	0.0001	0.00004	0.00001	-	-	-	-
Cold Aggregate/RAP ⁴ Bin Feeders - Uncontrolled	0.003	0.0011	0.00017	-	-	-	-
Cold Aggregate/RAP ⁴ Bin Discharge - Controlled ³	0.0001	0.00004	0.00001	-	-	-	-
Cold Aggregate/RAP ⁴ Bin Discharge - Uncontrolled	0.003	0.0011	0.00017	-	-	-	-
Drum Dryer Discharge to Conveyor - Uncontrolled	0.0005	0.00052	0.00052	-	-	0.001	0.004
Hot Mix Asphalt Silo Loading - Uncontrolled	0.0005	0.00059	0.00059	-	-	0.001	0.012
Hot Mix Asphalt Silo Discharge - Uncontrolled	0.0005	0.00052	0.00052	-	-	0.001	0.004

Notes:
 (1) Wet Scrubber Required
 (2) Bag House Required
 (3) Wet Dust Suppression Required
 (4) Reclaimed/Recycled Asphalt Pavement



Bureau of Air Pollution Control

Permit No. AP 1442-4374.05

CLASS II GENERAL AIR QUALITY OPERATING PERMIT FOR TEMPORARY CONSTRUCTION SOURCES

Section IV. Emission Factors (continued)

A. Emission Factors (NAC 445B.305)(Federally Enforceable SIP Requirement)(continued)

Under the authority of NAC 445B.305, the emission factors listed below are to be used to calculate the potential to emit for operating scenarios authorized by the general permit.

Lime Marination Plant			
Emission Unit	Emission Factor (lb/ton)		
	PM	PM ₁₀	PM _{2.5}
Loader to Feeder or Bin - Controlled ¹	0.00014	0.000046	0.000013
Loader to Feeder or Bin - Uncontrolled	0.003	0.0011	0.00017
Feeder to Conveyor - Controlled ¹	0.00014	0.000046	0.000013
Feeder to Conveyor - Uncontrolled	0.003	0.0011	0.00017
Conveyor to Pugmill - Controlled ¹	0.00014	0.000046	0.000013
Conveyor to Pugmill - Uncontrolled	0.003	0.0011	0.00017
Pugmill and Discharge to Conveyor - Controlled ¹	0.00014	0.000046	0.000013
Pugmill and Discharge to Conveyor - Uncontrolled	0.003	0.0011	0.00017
Conveyor Transfer Point - Controlled ¹	0.00014	0.000046	0.000013
Conveyor Transfer Point - Uncontrolled	0.003	0.0011	0.00017
Lime Silo Loading - Controlled ²	0.00099	0.00034	0.00005
Lime Silo Unloading - Uncontrolled	0.0048	0.0028	0.0004
Notes:			
(1) Wet Dust Suppression Required			
(2) Emissions during loading are controlled by a bin vent			

Concrete Batching			
Emission Unit	Emission Factor (lb/ton)		
	PM	PM ₁₀	PM _{2.5}
Loader to Feeder or Bin - Controlled ¹	0.00014	0.000046	0.000013
Loader to Feeder or Bin - Uncontrolled	0.003	0.0011	0.00017
Aggregate/Sand Conveyor Transfer Point - Controlled ¹	0.00014	0.000046	0.000013
Aggregate/Sand Conveyor Transfer Point - Uncontrolled	0.003	0.0011	0.00017
Cement Silo Loading - Controlled ²	0.00099	0.00034	0.00005
Cement Silo Unloading - Uncontrolled	0.0048	0.0028	0.0004
Weigh Hopper Loading - Controlled ⁴	0.0024	0.0014	0.0002
Weigh Hopper Loading - Uncontrolled	0.0048	0.0028	0.0004
Cement Supplement Silo Loading - Controlled ²	0.0089	0.0049	0.0007
Cement Supplement Silo Unloading - Uncontrolled	0.0048	0.0028	0.0004
Central Mixer Loading - Controlled ³	0.0184	0.0055	0.0008
Central Mixer Loading - Uncontrolled	0.572	0.156	0.024
Truck Mixer Loading - Controlled ³	0.098	0.0263	0.004
Truck Mixer Loading - Uncontrolled	1.118	0.31	0.047
Notes:			
(1) The emission factors listed for controlled emissions require wet dust suppression located at each emission unit and transfer point. Wet dust suppression consists of water sprays, fogging water sprays, fogging water sprays with chemical surfactant, or pneumatic fogging water sprays. Pre-wetting of material does not constitute wet dust suppression.			
(2) Emissions during loading are controlled by a bin vent.			
(3) Installations that employ water sprays, enclosures, hoods, curtains, shrouds, moveable and telescoping chutes, and central duct collection systems.			
(4) Emissions during loading are controlled by an enclosure utilizing 50% control efficiency.			

End of Emission Factors



Bureau of Air Pollution Control

Permit No. AP 1442-4374.05

CLASS II GENERAL AIR QUALITY OPERATING PERMIT FOR TEMPORARY CONSTRUCTION SOURCES

Section V. Specific Operating Conditions

A. Initial Opacity Compliance Demonstration (NAC 445B.22017, NAC 445B.252)(*Federally Enforceable SIP Requirement*) (40 CFR Part 60)

Under the authority of NAC 445B.22017, NAC 445B.252, and 40 CFR Part 60, the holder of the operating permit shall conduct an Initial Opacity Compliance Demonstration for all emission units at every change of location that is approved by the Director within 15 days of startup of each emission unit as described below:

1. For all emission units, Method 9 in Appendix A of 40 CFR Part 60 shall be used to determine opacity. The minimum total time of observations shall be six minutes (24 consecutive observations recorded at 15 second intervals), unless otherwise specified by an applicable subpart.

B. Performance Testing (NAC 445B.252)(*Federally Enforceable SIP Requirement*)(40 CFR Part 51)(40 CFR Part 60) (40 CFR Part 63)

Under the authority of NAC 445B.252, the holder of the operating permit shall conduct performance tests on each different hot mix asphalt plant operating under an approved change of location within 60 days after achieving the maximum production rate at which the affected facility will be operated, but not later than 180 days after initial startup during operation of the first change of location that is approved under this Class II general permit. The holder of the operating permit shall follow the test methods and procedures below:

1. Method 5 in Appendix A of 40 CFR Part 60 shall be used to determine particulate matter (PM) emissions. The sample volume for each test run shall be at least 0.90 dscm (31.8 dscf) and test runs shall be conducted for at least 60 minutes (40 CFR Part 60 Subpart I).
2. Method 201A and Method 202 in Appendix M of 40 CFR Part 51 shall be used to determine particulate matter equal to or less than a nominal 10 microns in aerodynamic diameter (PM₁₀) and particulate matter equal to or less than a nominal 2.5 microns in aerodynamic diameter (PM_{2.5}) emissions. The sample time and sample volume collected for each test run shall be sufficient to collect enough mass to weigh accurately.
3. The Method 201A and 202 test required in this section may be replaced by a Method 5 in Appendix A of 40 CFR Part 60 and Method 202 in Appendix M of 40 CFR Part 51 test. All particulate captured in the Method 5 and Method 202 test performed under this provision shall be considered PM_{2.5} for determination of compliance.
4. Method 6C in Appendix A of 40 CFR Part 60 shall be used to determine the sulfur dioxide concentration. Each test will be run for a minimum of one hour.
5. Method 7E in Appendix A of 40 CFR Part 60 shall be used to determine the nitrogen oxides concentration. Each test will be run for a minimum of one hour.
6. Method 9 in Appendix A of 40 CFR Part 60 shall be used to determine opacity. Opacity observations shall be conducted concurrently with the applicable performance test. The minimum total time of observations shall be six minutes (24 consecutive observations recorded at 15 second intervals), unless otherwise specified by an applicable subpart.
7. Method 10 in Appendix A of 40 CFR Part 60 shall be used to determine the carbon monoxide concentration. Each test will be run for a minimum of one hour.
8. Method 25A in Appendix A of 40 CFR Part 60 shall be used to determine the volatile organic compound (VOC) concentration. Method 18 in Appendix A of 40 CFR Part 60 or Method 320 in Appendix A of CFR Part 63 may be used in conjunction with Method 25A to break out the organic compounds that are not considered VOC's by definition per 40 CFR 51.100(s). Each Method 25A test will be run for a minimum of one hour.
9. All performance tests must comply with the advance notification, protocol review, operational conditions, reporting, and other requirements of **Section II.I.** of this operating permit. Material sampling must be conducted in accordance with protocols approved by the Director. All performance test results shall be based on the arithmetic average of three valid runs.
10. Testing shall be conducted on the exhaust stack (post controls).
11. Performance tests must be conducted under such conditions as the Director specifies to the operator of the plant based on representative performance of the affected facility. The holder of the operating permit shall make available to the Director such records as may be necessary to determine the conditions of the performance tests. Operations during periods of startup, shutdown and malfunction must not constitute representative conditions of the performance tests, unless otherwise specified in the applicable standard.
12. The holder of the operating permit shall give notice to the Director 30 days before the performance tests to allow the Director to have an observer present. A written testing procedure must be submitted to the Director at least 30 days before the performance tests to allow the Director to review the proposed testing procedures.



Bureau of Air Pollution Control

Permit No. AP 1442-4374.05

**CLASS II GENERAL AIR QUALITY OPERATING PERMIT
FOR TEMPORARY CONSTRUCTION SOURCES**

Section V. Specific Operating Conditions (continued)

- B. Performance Testing (NAC 445B.252)(*Federally Enforceable SIP Requirement*)(40 CFR Part 51)
(40 CFR Part 60)(40 CFR Part 63)(continued)

Under the authority of NAC 445B.252, the holder of the operating permit shall conduct performance tests on each different hot mix asphalt plant operating under an approved change of location within 60 days after achieving the maximum production rate at which the affected facility will be operated, but not later than 180 days after initial startup during operation of the first change of location that is approved under this Class II general permit. The holder of the operating permit shall follow the test methods and procedures below (continued):

13. All information and analytical results of testing and sampling must be certified as to their truth and accuracy and as to their compliance with all provisions of these regulations, and copies of these results must be provided to the Director no later than 60 days after the testing or sampling, or both.
14. Performance tests required under this section that are conducted below the maximum allowable throughput, shall be subject to the Director's review to determine if the throughputs during the performance tests were sufficient to provide adequate compliance demonstration. Should the Director determine that the performance tests do not provide adequate compliance demonstration, the Director may require additional testing.



Bureau of Air Pollution Control

Permit No. AP 1442-4374.05

CLASS II GENERAL AIR QUALITY OPERATING PERMIT FOR TEMPORARY CONSTRUCTION SOURCES

Section V. Specific Operating Conditions (continued)

C. Emission Limits (NAC 445.305, NAC 445B.22017, NAC 445B.346)(*Federally Enforceable SIP Requirement*)

Under the authority of NAC 445B.305, NAC 445B.22017, and NAC 445B.346, the calculated emissions at any one location shall not equal or exceed any of the emission limits specified in the table below:

*NOTE – The emission limits described below are established with the corresponding minimum setback (meters) and maximum daily hours of operation. These two operating parameters cannot be adjusted to meet the established emission limits. When calculating emissions for a Change of Location Approval, only the throughput can be adjusted to meet the emission limits for the desired operating scenario.

Type of Emission Unit		Operating Parameters		Emission Limits (lb/day)							
		Minimum Setback (meters)	Maximum Daily Hours of Operation	PM	PM ₁₀	PM _{2.5}	NOx	SO ₂	CO	VOC	Opacity
1	Sand/Gravel Crushing and Screening (ONLY)	50	8	37.73	13.49	1.91	0.00	0.00	0.00	0.00	20%
		50	10	40.67	14.54	2.06	0.00	0.00	0.00	0.00	20%
		50	12	43.05	15.39	2.18	0.00	0.00	0.00	0.00	20%
		50	14	45.03	16.10	2.28	0.00	0.00	0.00	0.00	20%
		50	16	46.51	16.63	2.35	0.00	0.00	0.00	0.00	20%
		75	8	44.53	15.93	2.25	0.00	0.00	0.00	0.00	20%
		75	10	48.09	17.20	2.43	0.00	0.00	0.00	0.00	20%
		75	12	51.03	18.25	2.58	0.00	0.00	0.00	0.00	20%
		75	14	53.26	19.04	2.69	0.00	0.00	0.00	0.00	20%
		75	16	55.42	19.82	2.80	0.00	0.00	0.00	0.00	20%
		100	8	51.71	18.49	2.62	0.00	0.00	0.00	0.00	20%
		100	10	55.82	19.96	2.82	0.00	0.00	0.00	0.00	20%
		100	12	59.38	21.23	3.00	0.00	0.00	0.00	0.00	20%
		100	14	61.92	22.14	3.13	0.00	0.00	0.00	0.00	20%
		100	16	64.58	23.09	3.27	0.00	0.00	0.00	0.00	20%
		200	8	83.50	29.86	4.22	0.00	0.00	0.00	0.00	20%
		200	10	94.02	33.62	4.76	0.00	0.00	0.00	0.00	20%
		200	12	104.66	37.42	5.29	0.00	0.00	0.00	0.00	20%
		200	14	113.01	40.41	5.72	0.00	0.00	0.00	0.00	20%
		200	16	118.26	42.29	5.98	0.00	0.00	0.00	0.00	20%
		300	8	108.00	38.62	5.46	0.00	0.00	0.00	0.00	20%
		300	10	121.85	43.57	6.16	0.00	0.00	0.00	0.00	20%
		300	12	136.39	48.77	6.90	0.00	0.00	0.00	0.00	20%
		300	14	151.11	54.04	7.64	0.00	0.00	0.00	0.00	20%
		300	16	164.28	58.75	8.31	0.00	0.00	0.00	0.00	20%
		400	8	135.83	48.57	6.87	0.00	0.00	0.00	0.00	20%
		400	10	152.32	54.47	7.71	0.00	0.00	0.00	0.00	20%
		400	12	169.79	60.72	8.59	0.00	0.00	0.00	0.00	20%
		400	14	187.70	67.12	9.50	0.00	0.00	0.00	0.00	20%
		400	16	203.87	72.90	10.31	0.00	0.00	0.00	0.00	20%
		500	8	165.03	59.01	8.35	0.00	0.00	0.00	0.00	20%
		500	10	182.31	65.19	9.22	0.00	0.00	0.00	0.00	20%
		500	12	203.00	72.59	10.27	0.00	0.00	0.00	0.00	20%
		500	14	226.01	80.82	11.43	0.00	0.00	0.00	0.00	20%
		500	16	247.17	88.39	12.50	0.00	0.00	0.00	0.00	20%



Bureau of Air Pollution Control

Permit No. AP 1442-4374.05

CLASS II GENERAL AIR QUALITY OPERATING PERMIT FOR TEMPORARY CONSTRUCTION SOURCES

Section V. Specific Operating Conditions (continued)

C. Emission Limits (NAC 445.305, NAC 445B.22017, NAC 445B.346)(*Federally Enforceable SIP Requirement*)

Under the authority of NAC 445B.305, NAC 445B.22017, and NAC 445B.346, the calculated emissions at any one location shall not equal or exceed any of the emission limits specified in the table below (continued):

*NOTE – The emission limits described below are established with the corresponding minimum setback (meters) and maximum daily hours of operation. These two operating parameters cannot be adjusted to meet the established emission limits. When calculating emissions for a Change of Location Approval, only the throughput can be adjusted to meet the emission limits for the desired operating scenario.

Type of Emission Unit		Operating Parameters		Emission Limits (lb/day)							
		Minimum Setback (meters)	Maximum Daily Hours of Operation	PM	PM ₁₀	PM _{2.5}	NOx	SO ₂	CO	VOC	Opacity
2	Hot Mix Asphalt with Lime Marination (ONLY)	50	8	71.77	58.77	52.48	133.61	26.72	321.94	117.44	20%
		50	10	78.07	63.93	57.09	145.35	29.07	350.23	127.76	20%
		50	12	85.76	70.22	62.70	159.65	31.93	384.70	140.34	20%
		50	14	92.88	76.05	67.91	172.91	34.58	416.64	151.99	20%
		50	16	101.14	82.82	73.95	188.29	37.66	453.70	165.51	20%
		75	8	95.73	78.39	70.00	178.23	35.65	429.46	156.66	20%
		75	10	100.85	82.58	73.74	187.75	37.55	452.40	165.03	20%
		75	12	111.13	91.00	81.25	206.88	41.38	498.51	181.85	20%
		75	14	117.56	96.27	85.96	218.87	43.77	527.38	192.39	20%
		75	16	119.52	97.87	87.39	222.51	44.50	536.16	195.59	20%
		100	8	114.47	93.73	83.70	213.10	42.62	513.49	187.32	20%
		100	10	122.18	100.05	89.34	227.47	45.49	548.11	199.95	20%
		100	12	131.76	107.89	96.34	245.30	49.06	591.07	215.62	20%
		100	14	127.29	104.23	93.08	236.98	47.40	571.03	208.31	20%
		100	16	136.33	111.64	99.69	253.81	50.76	611.58	223.10	20%
		200	8	189.11	154.85	138.28	352.06	70.41	848.34	309.47	20%
		200	10	207.95	170.28	152.05	387.13	77.43	932.84	340.29	20%
		200	12	215.76	176.67	157.76	401.67	80.33	967.87	353.07	20%
		200	14	226.32	185.33	165.48	421.34	84.27	1015.27	370.36	20%
		200	16	236.57	193.72	172.98	440.42	88.08	1061.24	387.13	20%
		300	8	282.07	230.97	206.25	525.12	105.02	1265.34	461.59	20%
		300	10	315.49	258.34	230.69	587.35	117.47	1415.28	516.28	20%
		300	12	326.60	267.44	238.81	608.03	121.61	1465.12	534.47	20%
		300	14	338.54	277.21	247.54	630.25	126.05	1518.66	554.00	20%
		300	16	351.24	287.61	256.82	653.89	130.78	1575.63	574.78	20%
		400	8	366.99	300.51	268.34	683.21	136.64	1646.27	600.55	20%
		400	10	412.82	338.04	301.85	768.54	153.71	1851.90	675.56	20%
		400	12	443.94	363.52	324.60	826.46	165.29	1991.47	726.47	20%
		400	14	466.21	381.76	340.89	867.94	173.59	2091.40	762.93	20%
		400	16	478.99	392.22	350.23	891.72	178.34	2148.71	783.83	20%
		500	8	436.05	357.06	318.83	811.78	162.36	1956.08	713.56	20%
		500	10	480.18	393.20	351.11	893.95	178.79	2154.08	785.79	20%
		500	12	540.13	442.29	394.94	1005.55	201.11	2423.00	883.89	20%
		500	14	590.17	483.27	431.53	1098.71	219.74	2647.48	965.78	20%
		500	16	577.40	472.81	422.19	1074.94	214.99	2590.20	944.88	20%



Bureau of Air Pollution Control

Permit No. AP 1442-4374.05

CLASS II GENERAL AIR QUALITY OPERATING PERMIT FOR TEMPORARY CONSTRUCTION SOURCES

Section V. Specific Operating Conditions (continued)

C. Emission Limits (NAC 445.305, NAC 445B.22017, NAC 445B.346)(Federally Enforceable SIP Requirement)

Under the authority of NAC 445B.305, NAC 445B.22017, and NAC 445B.346, the calculated emissions at any one location shall not equal or exceed any of the emission limits specified in the table below (continued):

*NOTE – The emission limits described below are established with the corresponding minimum setback (meters) and maximum daily hours of operation. These two operating parameters cannot be adjusted to meet the established emission limits. When calculating emissions for a Change of Location Approval, only the throughput can be adjusted to meet the emission limits for the desired operating scenario.

Type of Emission Unit		Operating Parameters		Emission Limits (lb/day)							
		Minimum Setback (meters)	Maximum Daily Hours of Operation	PM	PM ₁₀	PM _{2.5}	NOx	SO ₂	CO	VOC	Opacity
3	Hot Mix Asphalt without Lime Marination (ONLY)	50	8	53.82	46.13	42.39	108.63	21.73	261.75	95.49	20%
		50	10	58.39	50.05	45.99	117.87	23.57	284.02	103.61	20%
		50	12	64.86	55.59	51.09	130.93	26.19	315.48	115.09	20%
		50	14	72.58	62.21	57.17	146.51	29.30	353.04	128.79	20%
		50	16	80.60	69.08	63.48	162.69	32.54	392.02	143.01	20%
		75	8	74.25	63.64	58.48	149.87	29.97	361.12	131.74	20%
		75	10	80.95	69.38	63.76	163.41	32.68	393.74	143.64	20%
		75	12	90.33	77.42	71.14	182.33	36.47	439.34	160.27	20%
		75	14	101.34	86.86	79.82	204.55	40.91	492.90	179.81	20%
		75	16	112.62	96.52	88.70	227.32	45.46	547.76	199.82	20%
		100	8	98.54	84.46	77.61	198.90	39.78	479.28	174.84	20%
		100	10	107.68	92.30	84.81	217.36	43.47	523.76	191.06	20%
		100	12	120.39	103.19	94.82	243.01	48.60	585.56	213.61	20%
		100	14	126.13	108.11	99.34	254.60	50.92	613.49	223.80	20%
		100	16	130.04	111.46	102.42	262.50	52.50	632.51	230.74	20%
		200	8	183.45	157.23	144.49	370.30	74.06	892.28	325.50	20%
		200	10	208.30	178.53	164.06	420.46	84.09	1013.14	369.59	20%
		200	12	210.23	180.19	165.58	424.35	84.87	1022.52	373.01	20%
		200	14	221.90	190.19	174.77	447.91	89.58	1079.28	393.71	20%
		200	16	231.75	198.63	182.53	467.79	93.56	1127.21	411.20	20%
		300	8	283.53	243.01	223.31	572.31	114.46	1379.05	503.07	20%
		300	10	310.22	265.89	244.34	626.19	125.24	1508.87	550.42	20%
		300	12	325.33	278.84	256.24	656.69	131.34	1582.38	577.24	20%
		300	14	342.22	293.31	269.53	690.76	138.15	1664.48	607.19	20%
		300	16	344.43	295.21	271.28	695.24	139.05	1675.26	611.12	20%
		400	8	360.58	309.05	284.00	727.83	145.57	1753.79	639.77	20%
		400	10	394.09	337.77	310.39	795.48	159.10	1916.80	699.24	20%
		400	12	434.17	372.12	341.96	876.38	175.28	2111.74	770.35	20%
		400	14	461.43	395.48	363.43	931.39	186.28	2244.30	818.70	20%
		400	16	466.90	400.17	367.73	942.43	188.49	2270.91	828.41	20%
		500	8	435.67	373.41	343.14	879.40	175.88	2119.02	773.00	20%
		500	10	473.26	405.63	372.75	955.29	191.06	2301.88	839.71	20%
		500	12	508.36	435.71	400.40	1026.14	205.23	2472.60	901.99	20%
		500	14	574.16	492.10	452.21	1158.94	231.79	2792.60	1018.72	20%
		500	16	573.94	491.92	452.05	1158.51	231.70	2791.57	1018.34	20%



Bureau of Air Pollution Control

Permit No. AP 1442-4374.05

CLASS II GENERAL AIR QUALITY OPERATING PERMIT FOR TEMPORARY CONSTRUCTION SOURCES

Section V. Specific Operating Conditions (continued)

C. Emission Limits (NAC 445.305, NAC 445B.22017, NAC 445B.346)(*Federally Enforceable SIP Requirement*)

Under the authority of NAC 445B.305, NAC 445B.22017, and NAC 445B.346, the calculated emissions at any one location shall not equal or exceed any of the emission limits specified in the table below (continued):

*NOTE – The emission limits described below are established with the corresponding minimum setback (meters) and maximum daily hours of operation. These two operating parameters cannot be adjusted to meet the established emission limits. When calculating emissions for a Change of Location Approval, only the throughput can be adjusted to meet the emission limits for the desired operating scenario.

Type of Emission Unit		Operating Parameters		Emission Limits (lb/day)							
		Minimum Setback (meters)	Maximum Daily Hours of Operation	PM	PM ₁₀	PM _{2.5}	NOx	SO ₂	CO	VOC	Opacity
4	Concrete Batch Plant (ONLY)	50	8	50.75	17.86	2.70	0.00	0.00	0.00	0.00	20%
		50	10	53.92	18.97	2.87	0.00	0.00	0.00	0.00	20%
		50	12	57.68	20.29	3.07	0.00	0.00	0.00	0.00	20%
		50	14	60.62	21.33	3.23	0.00	0.00	0.00	0.00	20%
		50	16	63.89	22.48	3.40	0.00	0.00	0.00	0.00	20%
		75	8	72.62	25.55	3.87	0.00	0.00	0.00	0.00	20%
		75	10	77.88	27.40	4.15	0.00	0.00	0.00	0.00	20%
		75	12	83.33	29.32	4.44	0.00	0.00	0.00	0.00	20%
		75	14	87.50	30.78	4.66	0.00	0.00	0.00	0.00	20%
		75	16	88.89	31.27	4.73	0.00	0.00	0.00	0.00	20%
		100	8	88.49	31.13	4.71	0.00	0.00	0.00	0.00	20%
		100	10	96.73	34.03	5.15	0.00	0.00	0.00	0.00	20%
		100	12	102.38	36.02	5.45	0.00	0.00	0.00	0.00	20%
		100	14	107.64	37.87	5.73	0.00	0.00	0.00	0.00	20%
		100	16	109.52	38.53	5.83	0.00	0.00	0.00	0.00	20%
		200	8	139.29	49.00	7.42	0.00	0.00	0.00	0.00	20%
		200	10	150.79	53.05	8.03	0.00	0.00	0.00	0.00	20%
		200	12	160.12	56.33	8.53	0.00	0.00	0.00	0.00	20%
		200	14	168.75	59.37	8.99	0.00	0.00	0.00	0.00	20%
		200	16	175.40	61.71	9.34	0.00	0.00	0.00	0.00	20%
		300	8	197.62	69.53	10.52	0.00	0.00	0.00	0.00	20%
		300	10	213.29	75.04	11.36	0.00	0.00	0.00	0.00	20%
		300	12	229.17	80.62	12.20	0.00	0.00	0.00	0.00	20%
		300	14	243.06	85.51	12.94	0.00	0.00	0.00	0.00	20%
		300	16	254.76	89.63	13.57	0.00	0.00	0.00	0.00	20%
		400	8	251.19	88.37	13.38	0.00	0.00	0.00	0.00	20%
		400	10	272.82	95.98	14.53	0.00	0.00	0.00	0.00	20%
		400	12	294.64	103.66	15.69	0.00	0.00	0.00	0.00	20%
		400	14	312.50	109.94	16.64	0.00	0.00	0.00	0.00	20%
		400	16	327.78	115.32	17.45	0.00	0.00	0.00	0.00	20%
		500	8	298.02	104.85	15.87	0.00	0.00	0.00	0.00	20%
		500	10	323.91	113.96	17.25	0.00	0.00	0.00	0.00	20%
		500	12	347.62	122.30	18.51	0.00	0.00	0.00	0.00	20%
		500	14	366.67	129.00	19.52	0.00	0.00	0.00	0.00	20%
		500	16	380.95	134.03	20.29	0.00	0.00	0.00	0.00	20%



Bureau of Air Pollution Control

Permit No. AP 1442-4374.05

CLASS II GENERAL AIR QUALITY OPERATING PERMIT FOR TEMPORARY CONSTRUCTION SOURCES

Section V. Specific Operating Conditions (continued)

C. Emission Limits (NAC 445.305, NAC 445B.22017, NAC 445B.346)(*Federally Enforceable SIP Requirement*)

Under the authority of NAC 445B.305, NAC 445B.22017, and NAC 445B.346, the calculated emissions at any one location shall not equal or exceed any of the emission limits specified in the table below (continued):

*NOTE – The emission limits described below are established with the corresponding minimum setback (meters) and maximum daily hours of operation. These two operating parameters cannot be adjusted to meet the established emission limits. When calculating emissions for a Change of Location Approval, only the throughput can be adjusted to meet the emission limits for the desired operating scenario.

Type of Emission Unit		Operating Parameters		Emission Limits (lb/day)							
		Minimum Setback (meters)	Maximum Daily Hours of Operation	PM	PM ₁₀	PM _{2.5}	NOx	SO ₂	CO	VOC	Opacity
5	Sand/Gravel Crushing and Screening and Hot Mix Asphalt with Lime Marination	50	8	50.17	41.08	36.68	93.39	18.68	225.05	82.10	20%
		50	10	54.49	44.62	39.84	101.44	20.29	244.43	89.17	20%
		50	12	60.47	49.51	44.21	112.57	22.51	271.25	98.95	20%
		50	14	67.71	55.45	49.51	126.06	25.21	303.76	110.81	20%
		50	16	75.39	61.73	55.12	140.35	28.07	338.19	123.37	20%
		75	8	68.59	56.16	50.15	127.69	25.54	307.67	112.24	20%
		75	10	74.83	61.27	54.71	139.30	27.86	335.66	122.45	20%
		75	12	83.39	68.29	60.98	155.25	31.05	374.09	136.47	20%
		75	14	93.61	76.65	68.44	174.27	34.85	419.92	153.18	20%
		75	16	104.32	85.42	76.28	194.21	38.84	467.97	170.71	20%
		100	8	89.11	72.97	65.16	165.89	33.18	399.74	145.82	20%
		100	10	97.42	79.77	71.23	181.37	36.27	437.02	159.42	20%
		100	12	108.84	89.12	79.58	202.62	40.52	488.24	178.11	20%
		100	14	122.22	100.08	89.37	227.54	45.51	548.28	200.01	20%
		100	16	135.85	111.24	99.33	252.91	50.58	609.41	222.31	20%
		200	8	185.16	151.62	135.39	344.71	68.94	830.61	303.00	20%
		200	10	206.69	169.25	151.13	384.79	76.96	927.21	338.24	20%
		200	12	217.26	177.91	158.86	404.47	80.89	974.63	355.54	20%
		200	14	229.18	187.66	167.57	426.65	85.33	1028.07	375.03	20%
		200	16	232.37	190.28	169.91	432.60	86.52	1042.41	380.26	20%
		300	8	244.14	199.91	178.51	454.51	90.90	1095.20	399.52	20%
		300	10	282.42	231.26	206.51	525.78	105.16	1266.94	462.17	20%
		300	12	286.00	234.19	209.12	532.44	106.49	1282.99	468.03	20%
		300	14	316.28	258.99	231.26	588.81	117.76	1418.81	517.57	20%
		300	16	322.34	263.95	235.69	600.09	120.02	1445.99	527.49	20%
		400	8	306.29	250.81	223.96	570.22	114.04	1374.01	501.23	20%
		400	10	335.60	274.81	245.39	624.78	124.96	1505.48	549.19	20%
		400	12	345.97	283.30	252.97	644.09	128.82	1552.01	566.16	20%
		400	14	374.58	306.73	273.89	697.35	139.47	1680.35	612.98	20%
		400	16	395.88	324.17	289.46	737.00	147.40	1775.88	647.83	20%
		500	8	386.49	316.48	282.60	719.52	143.90	1733.77	632.47	20%
		500	10	418.22	342.46	305.80	778.59	155.72	1876.10	684.39	20%
		500	12	430.14	352.22	314.52	800.79	160.16	1929.59	703.90	20%
		500	14	471.33	385.95	344.63	877.46	175.49	2114.34	771.30	20%
		500	16	494.86	405.22	361.84	921.27	184.25	2219.92	809.81	20%



Bureau of Air Pollution Control

Permit No. AP 1442-4374.05

CLASS II GENERAL AIR QUALITY OPERATING PERMIT FOR TEMPORARY CONSTRUCTION SOURCES

Section V. Specific Operating Conditions (continued)

C. Emission Limits (NAC 445.305, NAC 445B.22017, NAC 445B.346)(Federally Enforceable SIP Requirement)

Under the authority of NAC 445B.305, NAC 445B.22017, and NAC 445B.346, the calculated emissions at any one location shall not equal or exceed any of the emission limits specified in the table below (continued):

*NOTE – The emission limits described below are established with the corresponding minimum setback (meters) and maximum daily hours of operation. These two operating parameters cannot be adjusted to meet the established emission limits. When calculating emissions for a Change of Location Approval, only the throughput can be adjusted to meet the emission limits for the desired operating scenario.

Type of Emission Unit		Operating Parameters		Emission Limits (lb/day)							
		Minimum Setback (meters)	Maximum Daily Hours of Operation	PM	PM ₁₀	PM _{2.5}	NOx	SO ₂	CO	VOC	Opacity
6	Sand/Gravel Crushing and Screening and Hot Mix Asphalt without Lime Marination	50	8	48.15	41.27	37.92	97.19	19.44	234.18	85.43	20%
		50	10	52.27	44.80	41.17	105.51	21.10	254.23	92.74	20%
		50	12	57.97	49.69	45.66	117.02	23.40	281.97	102.86	20%
		50	14	64.89	55.62	51.11	130.98	26.20	315.62	115.14	20%
		50	16	72.20	61.88	56.87	145.74	29.15	351.19	128.11	20%
		75	8	66.02	56.58	52.00	133.26	26.65	321.09	117.13	20%
		75	10	72.00	61.71	56.71	145.33	29.07	350.20	127.75	20%
		75	12	80.20	68.74	63.17	161.89	32.38	390.10	142.31	20%
		75	14	89.99	77.13	70.88	181.65	36.33	437.72	159.68	20%
		75	16	100.21	85.89	78.93	202.28	40.46	487.41	177.80	20%
		100	8	85.95	73.67	67.70	173.50	34.70	418.07	152.51	20%
		100	10	93.94	80.52	73.99	189.62	37.92	456.92	166.68	20%
		100	12	104.89	89.90	82.61	211.73	42.35	510.18	186.11	20%
		100	14	117.75	100.92	92.74	237.67	47.53	572.70	208.92	20%
		100	16	130.85	112.15	103.06	264.11	52.82	636.42	232.16	20%
		200	8	175.69	150.58	138.37	354.63	70.93	854.51	311.72	20%
		200	10	192.00	164.56	151.22	387.56	77.51	933.86	340.67	20%
		200	12	205.65	176.26	161.98	415.11	83.02	1000.27	364.89	20%
		200	14	218.71	187.45	172.26	441.47	88.29	1063.77	388.05	20%
		200	16	221.84	190.14	174.73	447.79	89.56	1079.00	393.61	20%
		300	8	232.45	199.23	183.08	469.20	93.84	1130.58	412.43	20%
		300	10	268.78	230.37	211.70	542.54	108.51	1307.32	476.90	20%
		300	12	274.77	235.50	216.42	554.63	110.93	1336.45	487.53	20%
		300	14	299.68	256.85	236.03	604.91	120.98	1457.60	531.72	20%
		300	16	308.71	264.59	243.15	623.14	124.63	1501.52	547.74	20%
		400	8	298.57	255.90	235.16	602.66	120.53	1452.18	529.74	20%
		400	10	324.44	278.08	255.54	654.89	130.98	1578.05	575.66	20%
		400	12	336.49	288.41	265.03	679.22	135.84	1636.66	597.04	20%
		400	14	356.49	305.54	280.77	719.57	143.91	1733.90	632.51	20%
		400	16	374.87	321.29	295.25	756.67	151.33	1823.29	665.12	20%
		500	8	373.40	320.04	294.10	753.72	150.74	1816.17	662.53	20%
		500	10	421.42	361.20	331.92	850.65	170.13	2049.74	747.73	20%
		500	12	423.08	362.61	333.22	853.98	170.80	2057.78	750.66	20%
		500	14	466.37	399.72	367.32	941.37	188.27	2268.35	827.48	20%
		500	16	480.96	412.23	378.82	970.83	194.17	2339.34	853.37	20%



Bureau of Air Pollution Control

Permit No. AP 1442-4374.05

CLASS II GENERAL AIR QUALITY OPERATING PERMIT FOR TEMPORARY CONSTRUCTION SOURCES

Section V. Specific Operating Conditions (continued)

C. Emission Limits (NAC 445.305, NAC 445B.22017, NAC 445B.346)(*Federally Enforceable SIP Requirement*)

Under the authority of NAC 445B.305, NAC 445B.22017, and NAC 445B.346, the calculated emissions at any one location shall not equal or exceed any of the emission limits specified in the table below (continued):

*NOTE – The emission limits described below are established with the corresponding minimum setback (meters) and maximum daily hours of operation. These two operating parameters cannot be adjusted to meet the established emission limits. When calculating emissions for a Change of Location Approval, only the throughput can be adjusted to meet the emission limits for the desired operating scenario.

Type of Emission Unit		Operating Parameters		Emission Limits (lb/day)							
		Minimum Setback (meters)	Maximum Daily Hours of Operation	PM	PM ₁₀	PM _{2.5}	NOx	SO ₂	CO	VOC	Opacity
7	Sand/Gravel Crushing and Screening and Concrete Batch Plant	50	8	56.08	19.81	2.95	0.00	0.00	0.00	0.00	20%
		50	10	60.88	21.50	3.20	0.00	0.00	0.00	0.00	20%
		50	12	67.80	23.95	3.57	0.00	0.00	0.00	0.00	20%
		50	14	76.02	26.85	4.00	0.00	0.00	0.00	0.00	20%
		50	16	84.80	29.95	4.46	0.00	0.00	0.00	0.00	20%
		75	8	82.34	29.08	4.33	0.00	0.00	0.00	0.00	20%
		75	10	89.80	31.72	4.73	0.00	0.00	0.00	0.00	20%
		75	12	100.51	35.50	5.29	0.00	0.00	0.00	0.00	20%
		75	14	110.31	38.96	5.80	0.00	0.00	0.00	0.00	20%
		75	16	113.46	40.07	5.97	0.00	0.00	0.00	0.00	20%
		100	8	112.51	39.74	5.92	0.00	0.00	0.00	0.00	20%
		100	10	123.04	43.46	6.47	0.00	0.00	0.00	0.00	20%
		100	12	129.55	45.76	6.82	0.00	0.00	0.00	0.00	20%
		100	14	135.97	48.02	7.15	0.00	0.00	0.00	0.00	20%
		100	16	140.53	49.63	7.39	0.00	0.00	0.00	0.00	20%
		200	8	190.67	67.34	10.03	0.00	0.00	0.00	0.00	20%
		200	10	204.21	72.13	10.75	0.00	0.00	0.00	0.00	20%
		200	12	217.45	76.80	11.44	0.00	0.00	0.00	0.00	20%
		200	14	230.51	81.41	12.13	0.00	0.00	0.00	0.00	20%
		200	16	241.54	85.31	12.71	0.00	0.00	0.00	0.00	20%
		300	8	242.42	85.62	12.76	0.00	0.00	0.00	0.00	20%
		300	10	260.01	91.83	13.68	0.00	0.00	0.00	0.00	20%
		300	12	279.82	98.83	14.72	0.00	0.00	0.00	0.00	20%
		300	14	296.30	104.65	15.59	0.00	0.00	0.00	0.00	20%
		300	16	309.23	109.22	16.27	0.00	0.00	0.00	0.00	20%
		400	8	303.51	107.20	15.97	0.00	0.00	0.00	0.00	20%
		400	10	325.33	114.90	17.12	0.00	0.00	0.00	0.00	20%
		400	12	348.79	123.19	18.35	0.00	0.00	0.00	0.00	20%
		400	14	368.35	130.10	19.38	0.00	0.00	0.00	0.00	20%
		400	16	383.07	135.29	20.16	0.00	0.00	0.00	0.00	20%
		500	8	343.60	121.36	18.08	0.00	0.00	0.00	0.00	20%
		500	10	381.69	134.81	20.08	0.00	0.00	0.00	0.00	20%
		500	12	414.25	146.31	21.80	0.00	0.00	0.00	0.00	20%
		500	14	437.30	154.45	23.01	0.00	0.00	0.00	0.00	20%
		500	16	454.92	160.67	23.94	0.00	0.00	0.00	0.00	20%



Bureau of Air Pollution Control

Permit No. AP 1442-4374.05

CLASS II GENERAL AIR QUALITY OPERATING PERMIT FOR TEMPORARY CONSTRUCTION SOURCES

Section V. Specific Operating Conditions (continued)

C. Emission Limits (NAC 445.305, NAC 445B.22017, NAC 445B.346)(Federally Enforceable SIP Requirement)

Under the authority of NAC 445B.305, NAC 445B.22017, and NAC 445B.346, the calculated emissions at any one location shall not equal or exceed any of the emission limits specified in the table below (continued):

*NOTE – The emission limits described below are established with the corresponding minimum setback (meters) and maximum daily hours of operation. These two operating parameters cannot be adjusted to meet the established emission limits. When calculating emissions for a Change of Location Approval, only the throughput can be adjusted to meet the emission limits for the desired operating scenario.

Type of Emission Unit		Operating Parameters		Emission Limits (lb/day)							
		Minimum Setback (meters)	Maximum Daily Hours of Operation	PM	PM ₁₀	PM _{2.5}	NOx	SO ₂	CO	VOC	Opacity
8	Sand/Gravel Crushing and Screening, Hot Mix Asphalt with Lime Marination, and Concrete Batching	50	8	34.94	28.61	25.55	65.04	13.01	156.72	57.17	20%
		50	10	37.87	31.01	27.69	70.50	14.10	169.88	61.97	20%
		50	12	42.05	34.44	30.75	78.29	15.66	188.65	68.82	20%
		50	14	46.96	38.45	34.34	87.43	17.49	210.66	76.85	20%
		50	16	52.20	42.75	38.17	97.19	19.44	234.18	85.43	20%
		75	8	49.30	40.37	36.05	91.78	18.36	221.16	80.68	20%
		75	10	53.56	43.85	39.16	99.70	19.94	240.25	87.64	20%
		75	12	59.57	48.78	43.55	110.89	22.18	267.21	97.48	20%
		75	14	66.70	54.62	48.77	124.17	24.83	299.20	109.15	20%
		75	16	73.69	60.34	53.88	137.19	27.44	330.58	120.59	20%
		100	8	63.98	52.39	46.78	119.11	23.82	287.01	104.70	20%
		100	10	69.57	56.97	50.87	129.53	25.91	312.11	113.85	20%
		100	12	77.55	63.51	56.71	144.38	28.88	347.91	126.91	20%
		100	14	86.98	71.22	63.60	161.93	32.39	390.19	142.34	20%
		100	16	90.67	74.25	66.30	168.80	33.76	406.75	148.38	20%
		200	8	122.54	100.34	89.60	228.13	45.63	549.71	200.53	20%
		200	10	134.89	110.46	98.63	251.13	50.23	605.13	220.75	20%
		200	12	142.82	116.95	104.43	265.89	53.18	640.69	233.72	20%
		200	14	147.03	120.39	107.51	273.72	54.74	659.56	240.60	20%
		200	16	153.17	125.42	112.00	285.16	57.03	687.12	250.65	20%
		300	8	154.59	126.59	113.04	287.80	57.56	693.50	252.98	20%
		300	10	165.23	135.30	120.81	307.60	61.52	741.21	270.39	20%
		300	12	176.38	144.43	128.97	328.36	65.67	791.23	288.64	20%
		300	14	185.81	152.15	135.86	345.91	69.18	833.52	304.06	20%
		300	16	192.58	157.70	140.82	358.53	71.71	863.92	315.15	20%
		400	8	179.46	146.95	131.22	334.09	66.82	805.04	293.67	20%
		400	10	192.70	157.80	140.90	358.75	71.75	864.46	315.35	20%
		400	12	204.91	167.79	149.83	381.48	76.30	919.22	335.33	20%
		400	14	214.36	175.53	156.73	399.06	79.81	961.58	350.78	20%
		400	16	222.17	181.92	162.45	413.60	82.72	996.62	363.56	20%
		500	8	201.56	165.05	147.38	375.24	75.05	904.19	329.84	20%
		500	10	227.56	186.34	166.39	423.64	84.73	1020.82	372.39	20%
		500	12	247.78	202.90	181.17	461.29	92.26	1111.53	405.48	20%
		500	14	261.18	213.86	190.97	486.22	97.24	1171.62	427.40	20%
		500	16	271.26	222.12	198.34	505.00	101.00	1216.85	443.90	20%



Bureau of Air Pollution Control

Permit No. AP 1442-4374.05

CLASS II GENERAL AIR QUALITY OPERATING PERMIT FOR TEMPORARY CONSTRUCTION SOURCES

Section V. Specific Operating Conditions (continued)

C. Emission Limits (NAC 445.305, NAC 445B.22017, NAC 445B.346)(*Federally Enforceable SIP Requirement*)

Under the authority of NAC 445B.305, NAC 445B.22017, and NAC 445B.346, the calculated emissions at any one location shall not equal or exceed any of the emission limits specified in the table below (continued):

*NOTE – The emission limits described below are established with the corresponding minimum setback (meters) and maximum daily hours of operation. These two operating parameters cannot be adjusted to meet the established emission limits. When calculating emissions for a Change of Location Approval, only the throughput can be adjusted to meet the emission limits for the desired operating scenario.

Type of Emission Unit		Operating Parameters		Emission Limits (lb/day)							
		Minimum Setback (meters)	Maximum Daily Hours of Operation	PM	PM ₁₀	PM _{2.5}	NO _x	SO ₂	CO	VOC	Opacity
9	Sand/Gravel Crushing and Screening, Hot Mix Asphalt without Lime Marination, and Concrete Batching	50	8	32.52	27.87	25.61	65.64	13.13	158.17	57.70	20%
		50	10	35.25	30.22	27.77	71.16	14.23	171.47	62.55	20%
		50	12	39.16	33.56	30.84	79.04	15.81	190.46	69.48	20%
		50	14	43.73	37.48	34.44	88.27	17.65	212.70	77.59	20%
		50	16	48.60	41.66	38.28	98.10	19.62	236.39	86.23	20%
		75	8	46.02	39.45	36.25	92.90	18.58	223.86	81.66	20%
		75	10	50.01	42.86	39.38	100.94	20.19	243.22	88.72	20%
		75	12	55.64	47.69	43.82	112.31	22.46	270.61	98.72	20%
		75	14	62.29	53.38	49.06	125.73	25.15	302.95	110.51	20%
		75	16	69.13	59.25	54.45	139.53	27.91	336.22	122.65	20%
		100	8	59.93	51.37	47.20	120.97	24.19	291.50	106.34	20%
		100	10	65.19	55.87	51.34	131.58	26.32	317.06	115.66	20%
		100	12	72.69	62.30	57.25	146.72	29.34	353.53	128.97	20%
		100	14	81.51	69.86	64.20	164.53	32.91	396.46	144.63	20%
		100	16	85.26	73.07	67.15	172.09	34.42	414.68	151.27	20%
		200	8	115.25	98.78	90.77	232.64	46.53	560.57	204.49	20%
		200	10	125.38	107.46	98.75	253.08	50.62	609.82	222.46	20%
		200	12	132.65	113.69	104.47	267.75	53.55	645.17	235.35	20%
		200	14	138.47	118.68	109.06	279.51	55.90	673.51	245.69	20%
		200	16	143.26	122.79	112.83	289.17	57.83	696.79	254.18	20%
		300	8	144.51	123.86	113.82	291.69	58.34	702.87	256.40	20%
		300	10	154.43	132.36	121.63	311.72	62.34	751.12	274.00	20%
		300	12	164.78	141.23	129.78	332.61	66.52	801.47	292.37	20%
		300	14	173.32	148.55	136.51	349.86	69.97	843.02	307.53	20%
		300	16	179.77	154.08	141.59	362.88	72.58	874.40	318.97	20%
		400	8	169.54	145.31	133.53	342.21	68.44	824.61	300.81	20%
		400	10	182.04	156.03	143.38	367.46	73.49	885.43	323.00	20%
		400	12	193.46	165.81	152.37	390.50	78.10	940.95	343.25	20%
		400	14	202.07	173.19	159.16	407.88	81.58	982.85	358.54	20%
		400	16	209.59	179.63	165.07	423.05	84.61	1019.39	371.87	20%
		500	8	191.80	164.39	151.06	387.15	77.43	932.88	340.31	20%
		500	10	216.28	185.37	170.35	436.57	87.31	1051.96	383.75	20%
		500	12	234.58	201.06	184.76	473.51	94.70	1140.98	416.22	20%
		500	14	247.74	212.34	195.13	500.07	100.01	1204.98	439.57	20%
		500	16	257.55	220.74	202.85	519.87	103.97	1252.69	456.97	20%



Bureau of Air Pollution Control

Permit No. AP 1442-4374.05

**CLASS II GENERAL AIR QUALITY OPERATING PERMIT
FOR TEMPORARY CONSTRUCTION SOURCES**

SECTION V. SPECIFIC OPERATING CONDITIONS (continued)

D. Performance Standards for Emission Units Subject to 40 CFR Part 60 (NAC 445B.346)(Federally Enforceable SIP Requirement)
(40 CFR Part 60)

Under the authority of NAC 445B.346 and 40 CFR Part 60, the following performance standards apply:

1. Owners or operators subject to the requirements of 40 CFR Part 60 Subpart OOO – Standards of Performance for Nonmetallic Mineral Processing Plants:
 - a. The owner or operator must meet the following fugitive emissions limit for grinding mills, screening operations, bucket elevators, transfer points on belt conveyors, bagging operations, storage bins, enclosed truck or railcar loading stations or from any other affected facility (as defined in §§60.670 and 60.671), fugitive emissions which exhibit no greater than 7 percent opacity.
 - b. The owner or operator must meet the following fugitive emissions limit for crushers at which a capture system is not used, fugitive emissions which exhibit no greater than 12 percent opacity.
 - c. Method 9 of appendix A-4 of this part and the procedures in §60.11 shall be used to determine opacity.
2. Owners or operators subject to the requirements of 40 CFR Part 60, Subpart I – Standards of Performance for Hot Mix Asphalt Facilities:
 - a. No owner or operator subject to the provisions of this subpart shall discharge or cause the discharge into the atmosphere from any affected facility any gases which:
 - i. Contain particulate matter in excess of 90 mg/dscm (0.04 gr/dscf).
 - ii. Exhibit 20 percent opacity, or greater.
 - b. Opacity shall be determined by Reference Method 9 in Appendix A of 40 C.F.R. Part 60.

E. Monitoring and Recordkeeping Requirements for Emission Units Subject to 40 CFR Part 60 Subpart OOO – Standards of Performance for Nonmetallic Mineral Processing Plants (NAC 445B.346)(Federally Enforceable SIP Requirement)
(40 CFR Part 60)

Under the authority of NAC 445B.346 and 40 CFR Part 60, the following monitoring and recordkeeping requirements apply:

1. The owner or operator of any affected facility for which construction, modification, or reconstruction commenced on or after April 22, 2008, that uses wet suppression to control emissions from the affected facility must perform monthly periodic inspections to check that water is flowing to discharge spray nozzles in the wet suppression system. The owner or operator must initiate corrective action within 24 hours and complete corrective action as expeditiously as practical if the owner or operator finds that water is not flowing properly during an inspection of the water spray nozzles. The owner or operator must record each inspection of the water spray nozzles, including the date of each inspection and any corrective actions taken, in the logbook required under §60.676(b).
2. Owners or operators of affected facilities (as defined in §§60.670 and 60.671) for which construction, modification, or reconstruction commenced on or after April 22, 2008, must record each periodic inspection required under §60.674(b) or (c), including dates and any corrective actions taken, in a logbook (in written or electronic format). The owner or operator must keep the logbook onsite and make hard or electronic copies (whichever is requested) of the logbook available to the Administrator upon request.

*****End of Specific Operating Conditions*****



Bureau of Air Pollution Control

Permit No. AP 1442-4374.05

**CLASS II GENERAL AIR QUALITY OPERATING PERMIT
FOR TEMPORARY CONSTRUCTION SOURCES**

Section VI. Amendments

This Permit:

1. A request for a change of the location of an emission unit must be made in writing to the Director and submitted with the fee for each operating permit at least 10 days before each change of location. An owner or operator must not operate the emission unit at the new location until the Director approves the location. (NAC 445B.331) (*Federally Enforceable SIP Requirement*)
2. Has an effective date of May 7, 2022 to May 7, 2027 (NAC 445B.3477(11), NAC 445B.3477(12)) (*Federally Enforceable SIP Requirement*)
3. Any person aggrieved by a final decision of the Department may, not later than 10 days after notice of the action of the Department, appeal the decision by filing a request for a hearing before the Commission on a form 3* with the State Environmental Commission, 901 South Stewart Street, Suite 4001, Carson City, Nevada 89701-5249. *(See adopting agency for form.) (NAC 445B.890) (*State Only Requirement*)
4. A person may challenge the provisions of a Class II general permit only at the time the Class II general permit is issued. The Director's grant or denial of authority to operate under a Class II general permit to a stationary source or stationary sources does not provide an opportunity for an administrative review or a judicial review of the Class II general permit. (NAC 445B.3477(9)) (*Federally Enforceable SIP Requirement*)

THIS PERMIT EXPIRES ON: May 7, 2027

Signature: Tanya Soleta

Issued by: Tanya Soleta, P.E.
Supervisor, Permitting Branch
Bureau of Air Pollution Control

Phone: (775) 687- 9540

Date: May 18, 2022