



O'PARI





PRESTIGE

/pre'stiː(d)ʒ/

noun

- widespread respect and admiration for someone on the basis of a perception of their quality
- denoting something that arouses widespread respect or admiration.





SPECIFICATIONS

- Length: 95.00m / 311,8ft
- Beam: 13.80m / 45,3ft
- Draft: 3.60m / 11,10ft
- Number of crew: 30
- Built: 2020
- Builder: Golden Yachts
- Engines: 2 x CAT 3516C-HD 2525kw EACH
- Cruising speed: 16 knots
- Cabins: 13 (9 Double, 4 Twins)
- Guests: 12





KEY POINTS

- Brand new, contemporary yet luxurious interior furnishings
- Greek and other exotic marbles give an extra touch of luxury in the interiors
- Impressive salon area in the master cabin
- Independent VIP Suite on the main deck
- Total of 13 luxurious cabins including, as mentioned, an astonishing owner's suite on the upper deck
- Entertainment systems throughout the entire yacht
- State of the art audiovisual equipment
- Fully equipped gym
- Massage room, warm Turkish hammam and dry Finnish sauna





KEY POINTS

- Touch-and-go helipad at the forward Upper deck
- Sundeck jacuzzi with sunbathing lounge and Pool/Jacuzzi on the bridge deck
- Open-space sundeck that provides the ideal scenery for a party with a DJ booth, fully furnished bar, panoramic view Jacuzzi and vast lounge areas adding extra points to the setting
- Spacious and large outdoor areas
- Quiet and relaxing cruising
- “Green” Yacht; she is equipped with DPF systems for the reduction of pollutants and other hazardous substances towards the marine and atmospheric pollution
- Highly trained and attentive crew of 30, led by the talented Captain Alex Skaris with a doers’ attitude and 80% repeat clientele





SALON





DINING





UPPER SALON





OWNER'S SUITE





EN SUITE FACILITIES





MASTER CABIN





EN SUITE FACILITIES





VIP CABIN





EN SUITE FACILITIES



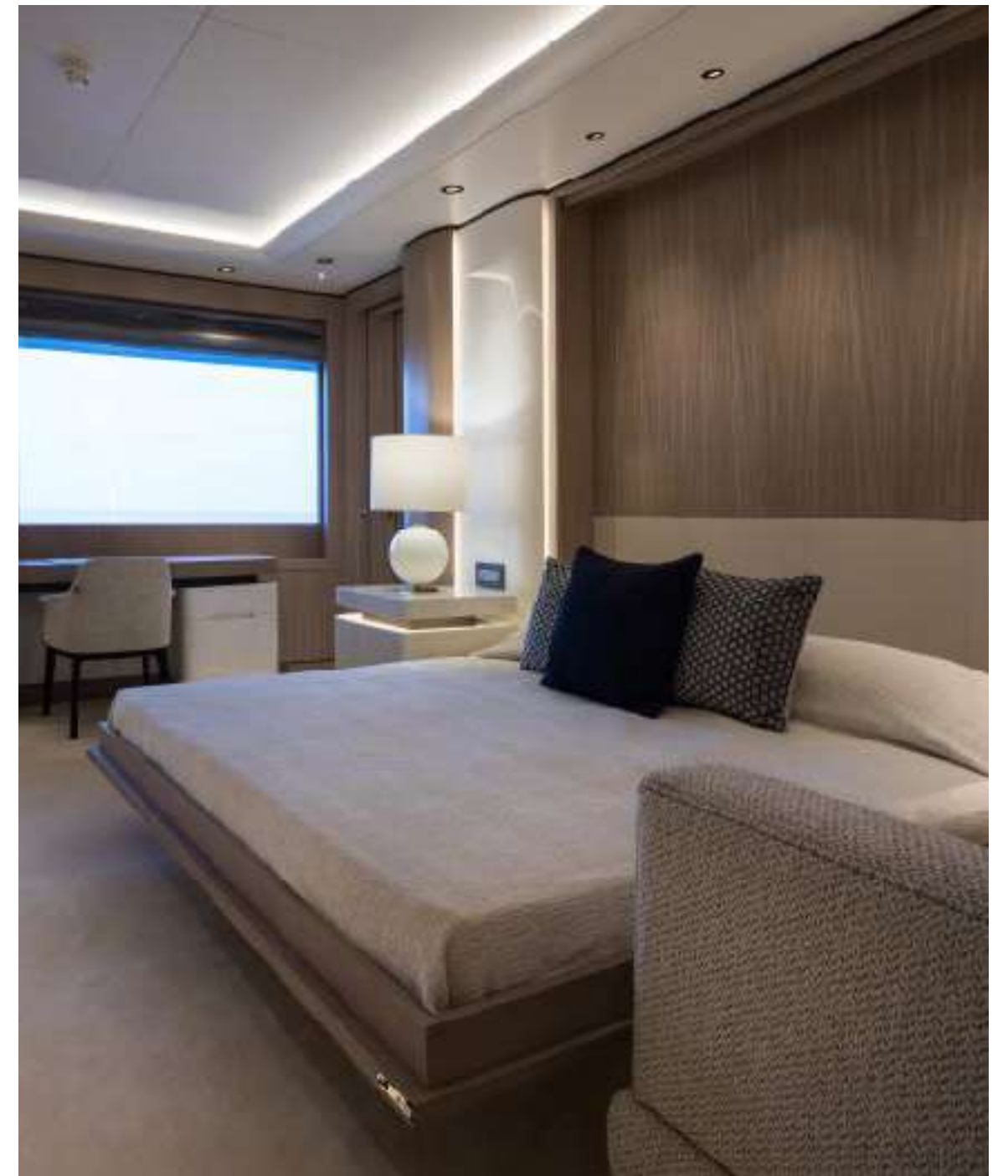


SALON DOUBLE CABIN





SALON DOUBLE CABIN





EN SUITE FACILITIES





GUEST CABIN





GUEST CABIN





EN SUITE FACILITIES





GUEST CABIN





GUEST CABIN





GUEST CABIN





EN SUITE FACILITIES





GUEST CABIN





EN SUITE FACILITIES





GUEST CABIN





EN SUITE FACILITIES





STAFF CABIN





EN SUITE FACILITIES





BEACH HOUSE





BEACH HOUSE





BEACH HOUSE SPA





MAIN DECK AFT





UPPER DECK AFT





DINING UPPER DECK





SWIMMING POOL



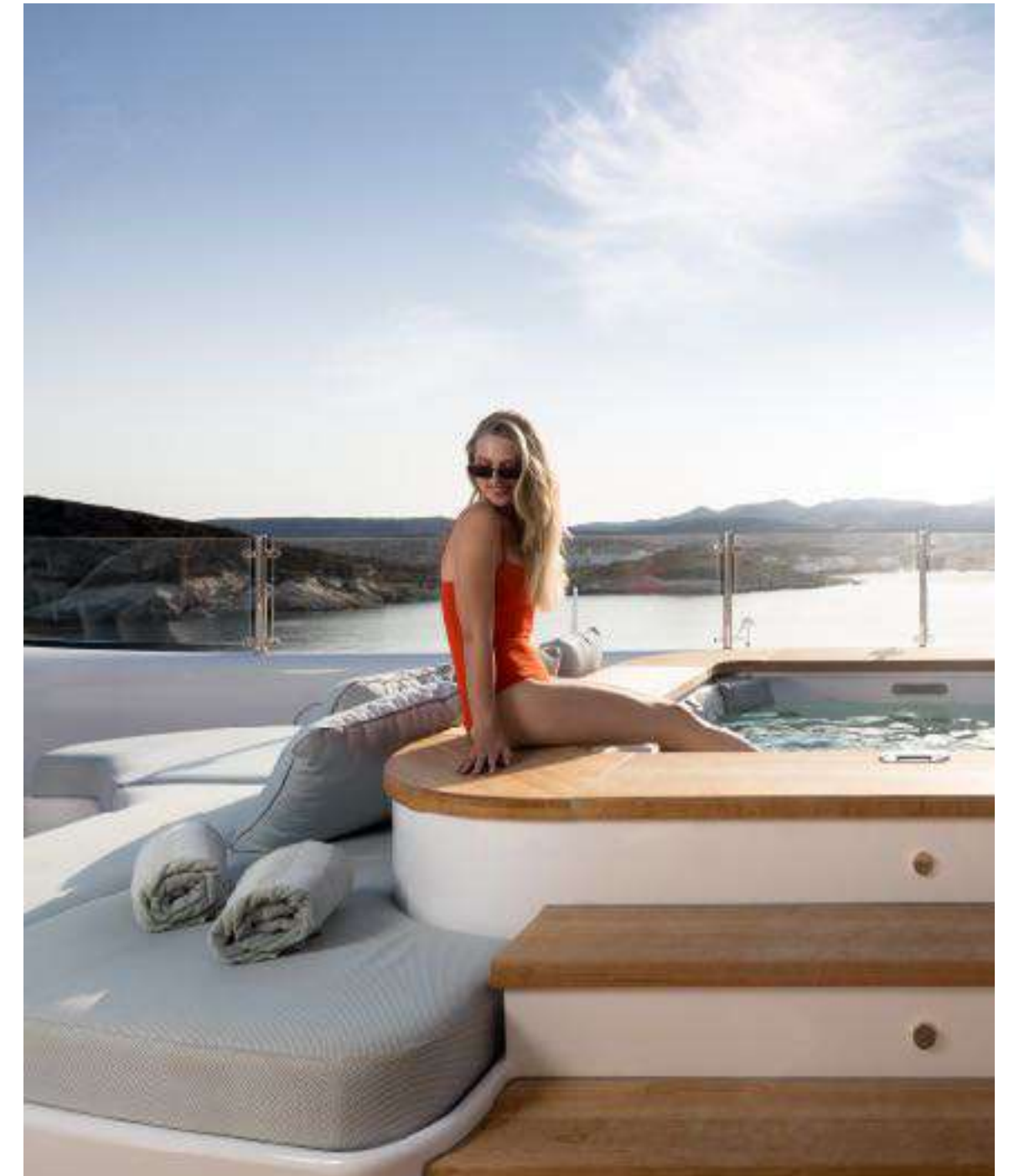


SUNDECK





JACUZZI



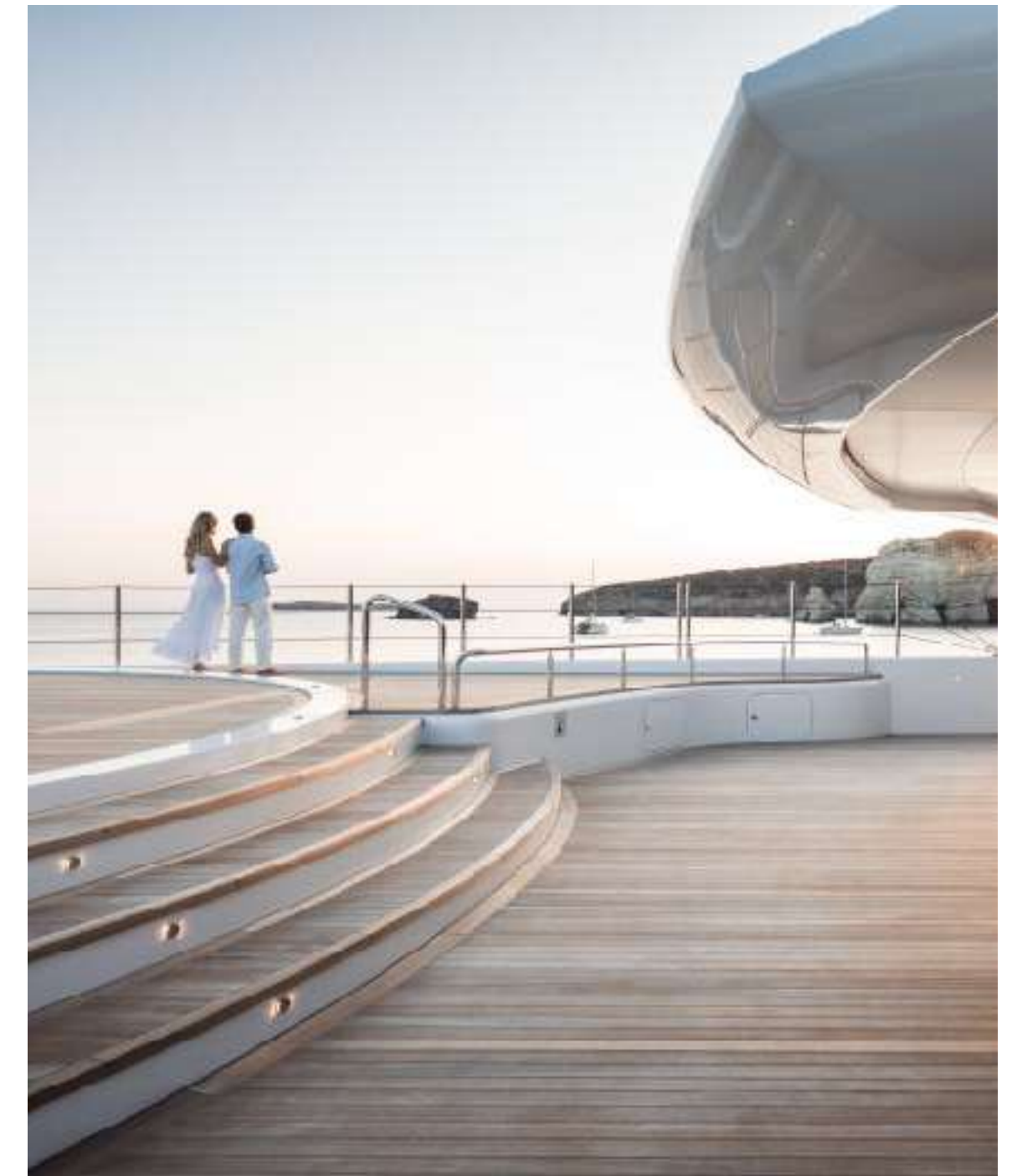


OUTDOOR CINEMA





HELIPAD





TENDERS & TOYS

- 1 x Limo Onda tender 9.75m, with inboard 2 x 220hp Volvo Penta D3 engines
- 1 x Rib Cobra Patronus 6.2m, beachlander, with a gasoline Mercruiser outboard engine 220hp
- 1 x Chris Craft Launch 27, with an inboard Mercury V8 6.2L, 350hp engine
- 1 x Zodiac Nautic Yachtline 4.40m with an outboard Yamaha 60hp engine
- 1 x Zodiac Typhoon 360 Alu
- 2 x Seadoo GTX 230/IBR
- 1 x Seadoo Spark 900HO AXE 2UP/IBR Trixx



TENDERS & TOYS

- 1 x Survitec solas rescue tender, RIBO 450 with an outboard YAMAHA F25GWHL
- 4 x Seabob F5 (Basic yellow, Basic orange, Ixon red, Platin silver)
- 2 x Fliteboard
- 1 x Single Kayak Puny Seaflo with paddle
- 1 x Nereus 2+1 seats sea Kayak w/paddles & seats
- 1 x Transparent Kayak 2-seat
- 2 x SUP Jobe parana bamboo
- 1 x Jungle Jim Inflat
- 1 x Aqua Glide Bouncer 16' with Slide & Ilog





TENDERS & TOYS

- 1 x Aqua Glide HD Runway 10'
- 1 x Jobe Water Carpet
- 3 x Jobe Crusher Towable (1 pax)
- 2 x Jobe Sonar Towable (4 pax)
- 2 x Jobe Chaser Towable (3 pax)
- 1 x Joust
- 1 x Ocean Pool
- 1 x Waterskis pair adult
- 1 x Waterskis pair teenager
- 1 x Waterskis pair junior

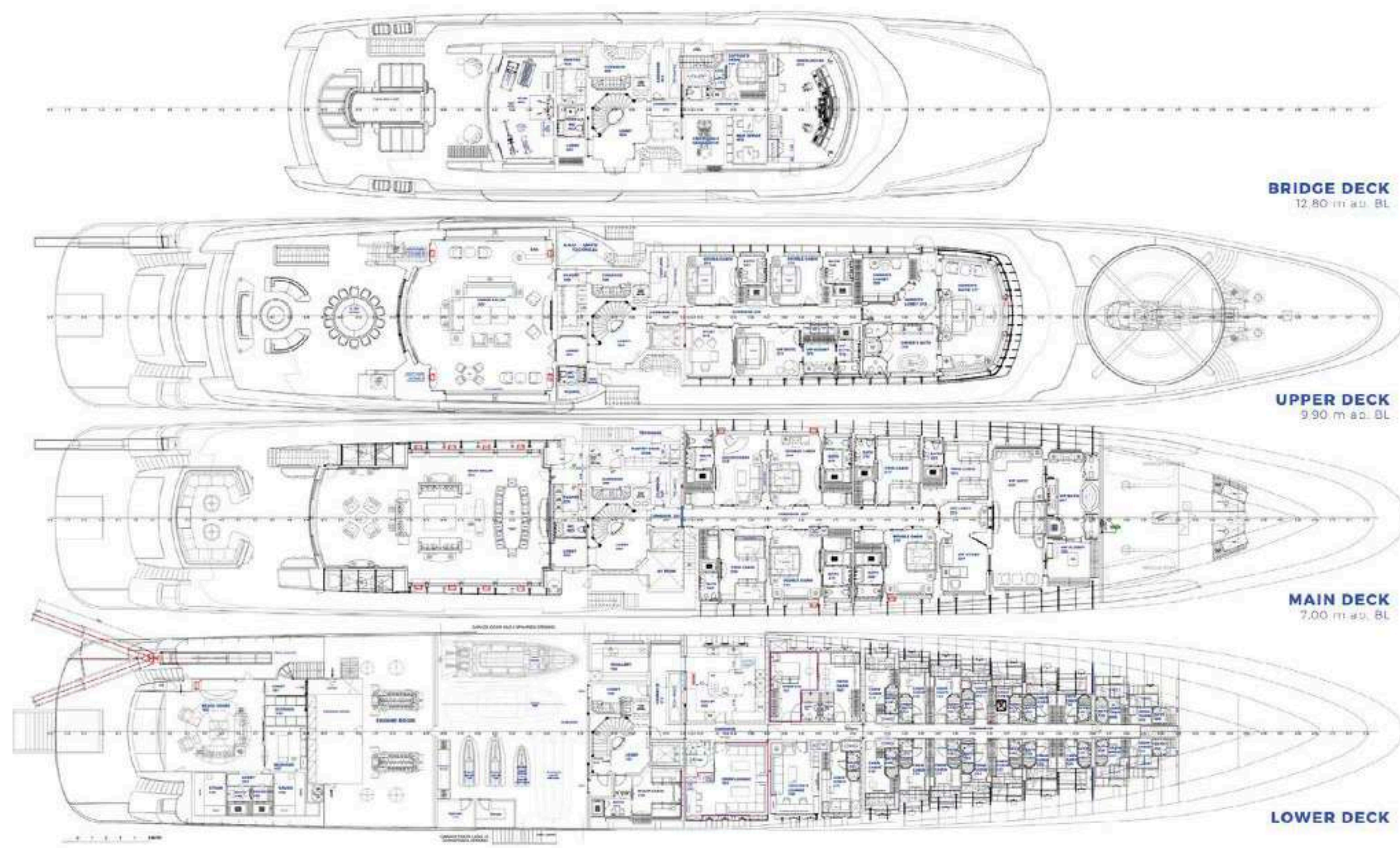




TENDERS & TOYS

- 1 x Monoski slalom
- 1 x Wakeboard
- 1 x Kneeboard
- 2 x Hobie mirage eclipse 12'
- 1 x Radinn Jetboard
- 2 x Electric scooters
- 2 x E- Bicycles Futura
- 2 x Trekking Bicycles





LAYOUT



O'PARI

