

A stylized illustration featuring a woman on the left and a horse on the right, both rendered in dark green silhouettes. The woman has long, braided hair. The horse is depicted in a running or trotting pose. The background is a light gray, decorated with various green leaf shapes and brown, rounded shapes representing hills or ground. The overall style is clean and modern.

# Stop MPRP, Inc. Webinar

[www.stopmprp.com](http://www.stopmprp.com)

# Tonight's Agenda

---

- What is The MPRP?
- Stop MPRP, Inc. Mission & Activities
- What You Need to Know if Your Property is in the Proposed Path
- How **YOU** Can Help Stop the MPRP
- Q&A



# To Ask a Question...

---

- Please submit your questions through the Q&A feature (NOT the Chat)
- Feel free to use the chat for conversation and comments, but remember any questions need to be submitted via the Q&A feature



# Disclaimer

---

The presentations provided during this webinar are for educational and informational purposes only and should not be considered as a substitute for independent professional advice. The opinions and statements made by participants reflect their personal views and, unless explicitly stated otherwise, do not represent the views or official position of Stop MPRP, Inc., its board members, or its volunteers.

Please note that this session will be audio and video recorded, and by attending, you consent to the potential publication of this material in various media formats without further notification.

Please note that the information shared during this webinar will be kept at a high level, as we are aware that it may be reviewed by representatives of PJM and PSEG. We encourage open discussion and participation, but ask that all attendees refrain from sharing sensitive or detailed information that could impact ongoing efforts. This webinar is intended for informational purposes only, and all content shared should be considered public knowledge.

Please email us at [media@stopmprp.org](mailto:media@stopmprp.org) for media inquiries

# Speakers & Panelists

---



**Joanne Frederick**  
Founder and Board Member  
Baltimore County



**Jim Earlbeck**  
Board Member  
Baltimore County



**Charlotte Hetterick**  
Board Member  
Carroll County

A stylized illustration of Noah's Ark, depicted as a large wooden structure with a ramp on the right. The ark is filled with various animals, including a large green dinosaur in the foreground, a green horse, a green pig, and a green sheep. There are also green plants and leaves scattered throughout the scene. The background is a light gray color.

# What is the MPRP?

---

# What is the MPRP?

The Maryland Piedmont Reliability Project, or **MPRP**, is a proposed 70-mile-long electrical transmission line by PJM Interconnection.

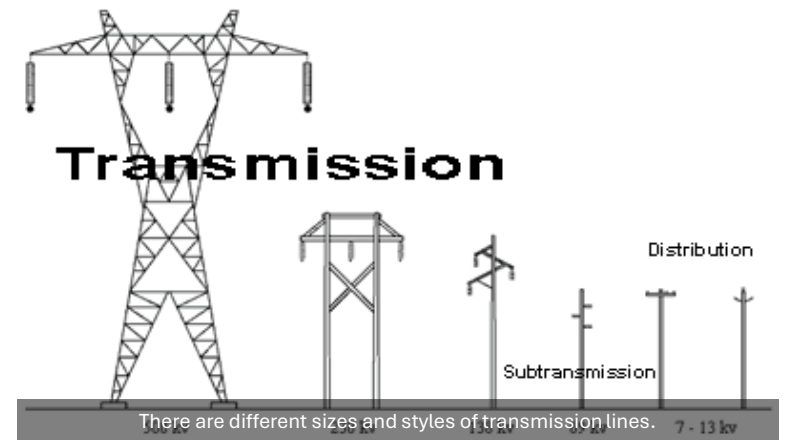
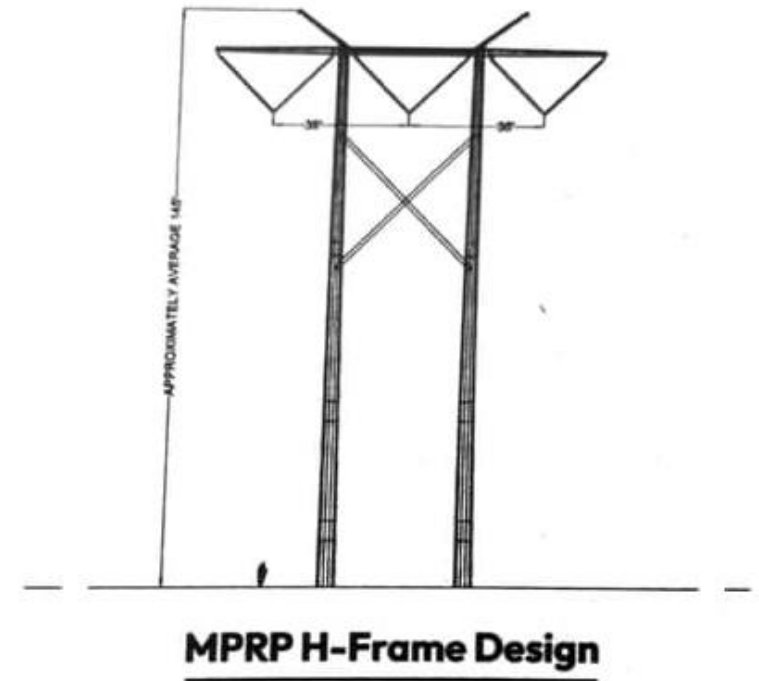
PJM Interconnection selected Public Service Enterprise Group (PSEG) for the Maryland Piedmont Reliability Project (MPRP) through a competitive bidding process.

The proposed routes, identified by PSEG, will almost exclusively use private and protected land, including homes, farms and businesses, for this new transmission line.

# What kind of power lines does PSEG plan to install?<sup>1</sup>

- The transmission line will be 500,000 Volts which is **more than 2 times more powerful** than most common existing transmission lines.
- The larger the power load, the more harmful the side effects.
- With more power, comes more negative impact. These high transmission power lines will cause **significantly more destruction** to property, more **harm to the environment**, and continue to come into question for causing more **negative health impacts** than existing power lines.

*<sup>1</sup>Importantly, there are viable alternatives with less potential impact that should be fully vetted, explored, and considered.*





# Route Maps

---

Proposed routes of  
August 30, 2024

---

## Legend

Study Area



Project Endpoint



Existing Substation



Existing Transmission Line



Transmission Line Study Corridor. (This map depicts alternative routes as 550-foot wide corridors. The requested easement width for the transmission line will be 150 feet).



[www.MPRP.com](http://www.MPRP.com) - click "View Alternative Routes" link on homepage




A stylized illustration in shades of green and brown on a grey background. It depicts a woman with long braided hair on the left, a horse on the right, and a ram in the center foreground. The scene is framed by large, rounded shapes representing hills or mountains.

# Who is Stop MPRP, Inc.?

---

# Stop MPRP, Inc.

July 9<sup>th</sup> was PSEG's first "public information session" and the first time many of us in Baltimore, Carroll, and Frederick counties in Maryland heard of the MPRP and discovered a company out of New Jersey was planning on taking private land for these new transmission lines.



A group of concerned residents, citizens, and farmers quickly connected with a single goal: Stop the MPRP.



We realized the best way to Stop the MPRP was to bring everyone together under one nonprofit organization to coordinate our efforts.



Stop MPRP, Inc. was founded.



# Stop MPRP, Inc.

---

- Stop MPRP, Inc. is a nonpartisan, nonprofit organization dedicated to advocating for the residents, landowners, farmers, and local businesses across Baltimore, Carroll, and Frederick counties in Maryland. We are a grassroots, volunteer-driven organization committed to protecting our communities and preserving private land from the MPRP.
- Stop MPRP, Inc. is a 501(c)4 membership organization working to stop the Maryland Piedmont Reliability Project which poses a threat by proposing the installation of high transmission power lines on private land throughout these three counties.
- You can read more about us at [www.stopmprp.com](http://www.stopmprp.com)



**SAVE MARYLAND FARMS & FAMILIE**



# Organizational Structure

---

# Board Members

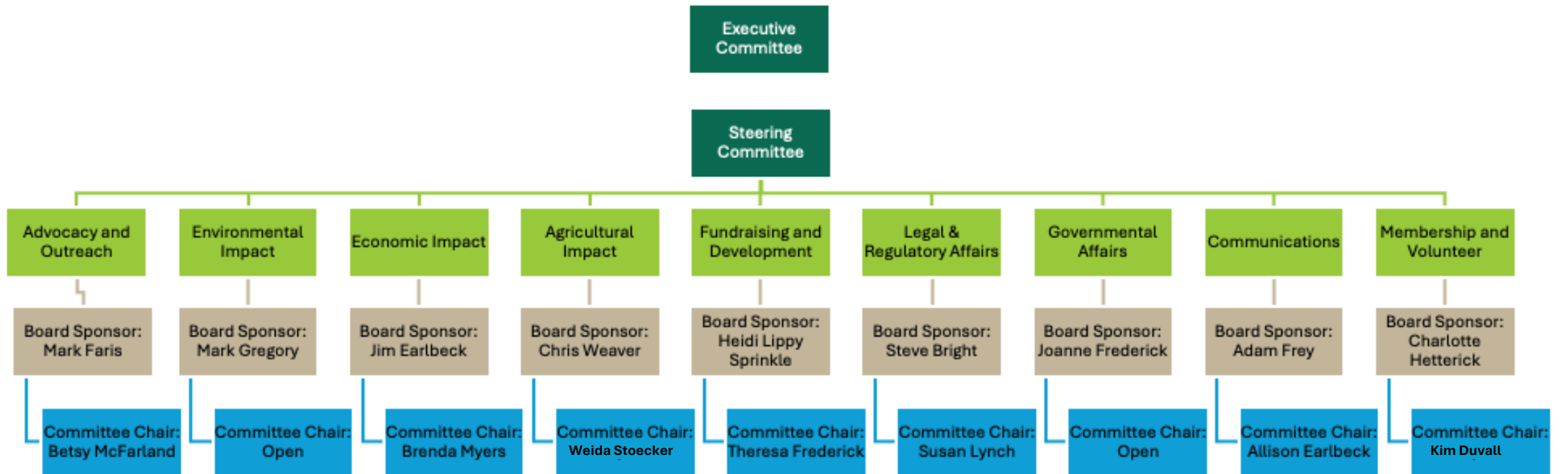
---

We have organized the Stop MPRP, Inc. board to have equal representation from each county. Our board members are:

- **Steven M. Bright, Esq.** (Frederick County)
- **Jim Earlbeck** (Baltimore County)
- **Mark Faris** (Frederick County)
- **Joanne M. Frederick** (Baltimore County)
- **Adam Frey** (Frederick County)
- **Mark Gregory** (Baltimore County)
- **Charlotte Hetterick** (Carroll County)
- **Heidi Lippy Sprinkle** (Carroll County)
- **Christopher Weaver** (Carroll County)



# Committee Structure





# Membership

---

The Board has set the following membership dues to support our efforts:  
**Individual Membership: \$10.00 per year**

**Family Membership: \$15.00 per year** (for 2 or more people at the same address)

---

## **Current Reach:**

**522 Members**

**2,933 Email Subscribers**

**10,000+ Community Members** in the Stop MPRP Facebook Group

**109,000+** views on our website

A stylized illustration of Noah's Ark, rendered in dark green and brown tones against a light gray background. The ark is shown as a large, multi-story building with a ramp on the right side. Various animals are depicted: a large elephant on the left, a lion in the center, and a horse on the right. The ark is surrounded by stylized green leaves and plants. The title "Mission & Beliefs" is centered over the illustration in white text, with a white horizontal line below it.

# Mission & Beliefs

# Stop MPRP, Inc. Mission Statement

---



At Stop MPRP, Inc., our mission is to protect and preserve the natural beauty and private lands in Maryland. We are dedicated to opposing the Maryland Piedmont Reliability Project (MPRP) and preventing the installation of high voltage power lines across privately owned land.

Through community engagement, education, and advocacy, we strive to uphold property rights, protect our farmland, safeguard our environment, and promote energy solutions that respect both our landowners and the well-being of our communities. Together, we stand committed to ensuring a future where **progress and preservation go hand in hand.**

# Stop MPRP, Inc.'s Beliefs

---

**Unfair Financial Burden** - Maryland ratepayers shouldn't subsidize some of the largest and wealthiest corporations in the world. Every resident will feel the financial impact.

**Better Alternatives Exist** - Proven, viable solutions are available that don't rely on outdated transmission technologies.

**Collaboration with Data Centers** - Data centers are essential, but they should be required to generate or source their own power responsibly.

**No Comprehensive Energy Plan** - Maryland lacks an integrated energy plan, leading to critical gaps in our strategy for sustainable development.

**Out-of-State Interests at Play** - This project is driven by out-of-state companies, bypassing the needs of Maryland's communities.

**Protecting Maryland's Agricultural Heritage** - Maryland's farmers play a crucial role in preserving our agricultural legacy, food security, and economy.

**Threat to Natural and Historic Landscapes** - The proposed power lines will cut through Maryland's natural beauty, including farmlands, protected conservation areas, and historic sites.

The background features stylized silhouettes in shades of green and brown. On the left, a woman with long braided hair is shown in profile. In the center, a horse is depicted in a rearing or galloping pose. Below the horse, a ram with large, curved horns is visible. The overall style is graphic and minimalist.

# Stop MPRP, Inc Update

---

# Financial Update as of 9/17/24



<b>Financial Summary (17 September 2024)</b>	
Receipts	57,302.73
Expenses	29,142.08
<b>Net</b>	<b>28,160.65</b>

<b>Expenses</b>	
Membership, Volunteer and Donation Software	5,725.08
Legal Retainer	2,500.00
Lobbyist Retainer (through 12/31/24)	15,096.00
Liability Insurance	321.00
Website, Email, Hosting	2,500.00
Fundraising Event	3,000.00
<b>Total</b>	<b>29,142.08</b>

# Key Activities

---



Ongoing  
Appearance at  
Events



Engaging with  
Elected Officials



Media Interviews



Engaging Experts  
(including power,  
environmental, real estate,  
agricultural)



Exploring All  
Options for Legal  
Action



Helping to Develop  
New Laws and  
Regulations

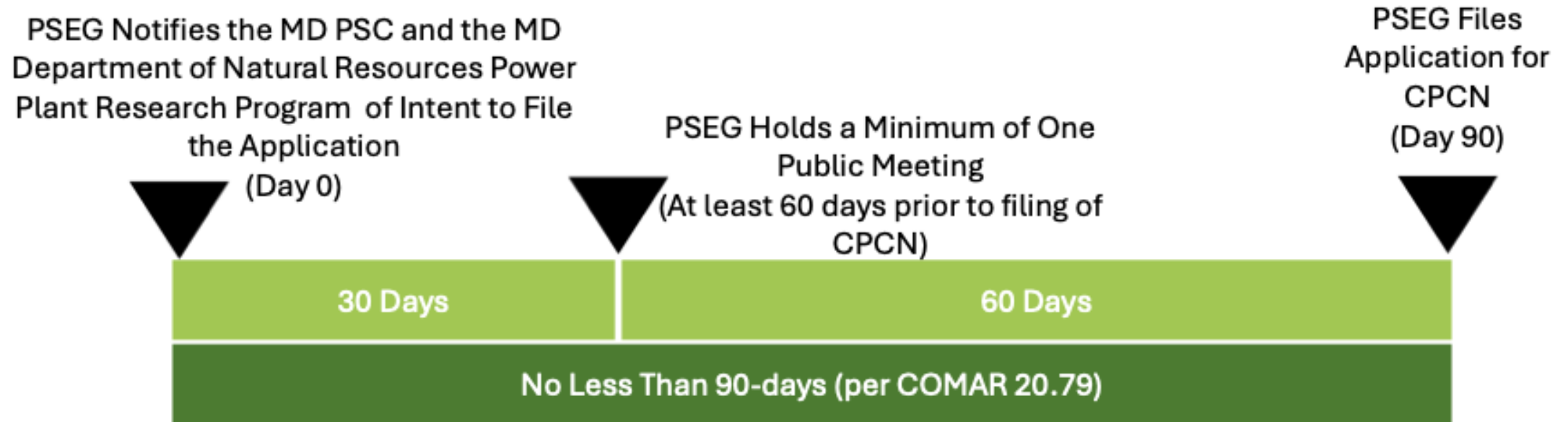
A stylized illustration in shades of green and brown. In the center, a horse and a ram are depicted in profile, facing right. The horse is larger and more prominent, with a detailed mane. The ram is smaller and positioned below the horse. The background features stylized trees with rounded canopies and rolling hills. The overall style is flat and graphic.

# What You Need to Know if Your Property is in the Proposed Path

---



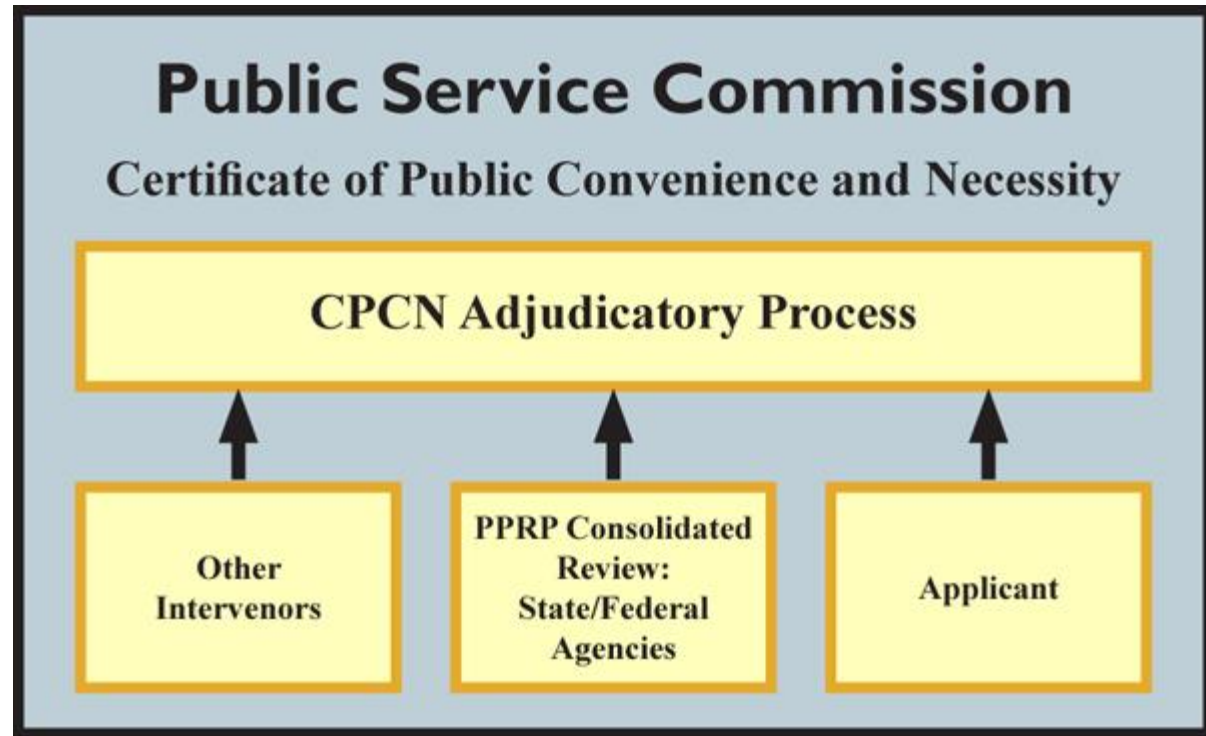
# Certificate for Public Convenience and Necessity (CPCN) Timeline



# Filing as an Intervenor before the PSC

**Maryland PSC Notice of Opportunity to Intervene:** Once PSEG submits their request to PSC for their Certificate of Public Convenience and Necessity, you will have an opportunity to file as an intervenor.

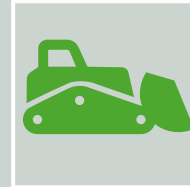
Please make sure you are signed up for our emails so that we can notify you of the instructions when that time comes.



# Know Your Rights



**Understand Eminent Domain:** The Maryland Piedmont Reliability Project (MPRP) has not yet been fully approved, and eminent domain cannot be used until it is. You are under no obligation to sign any agreements- especially before a permit has been issued.



**Survey Agreements Can Be Destructive:** Allowing surveys can lead to damage to your property, including clear-cutting and use of heavy equipment. You have the right to deny survey access until they provide a court order or proper permits.



**Beware of Pressure Tactics:** Land agents may try to rush you into signing easements or survey agreements. Do not be pressured—tell them to come back when they have the necessary permits.



**Consult Professionals:** Before signing any agreements, consult with an attorney and tax consultant to protect your rights and interests. Please contact Stop MPRP, Inc if you need a referral to legal counsel.

# Be a Holdout

**Do Not Give In:** Land agents want to avoid costly and lengthy eminent domain lawsuits, but we will not waver, so don't feel pressured into early agreements. Even if the permit is issued, we will still fight the MPRP until it is stopped.

**Refuse Investment Group Offers:** Some of those impacted have received offers from investment groups which may have nefarious intentions.

1. Exploiting Fear- aiming to "buy low" and "sell high" after we succeed in stopping the MPRP
2. Facilitating Easements- Some of these buyers could be aligned with PSEG and could be attempting to purchase key properties.

# Key Actions

**Demand Accountability:** If you feel a land agent is using deceitful tactics or violating ethical standards, you can report them to the PSC.

**Keep Records:** Document all communications with land agents and keep copies of any agreements or offers. Get everything in writing. Everything.

**Contact Stop MPRP, Inc.:** We will provide support and guidance. We are compiling tactics that have been successful in other projects, and will share them IF needed. .

A stylized illustration of a forest scene. In the foreground, a large brown bear is walking towards the right. In the background, a horse is running towards the right, and a rabbit is visible in the lower center. The scene is filled with green leaves and branches. The text "How YOU Can Help Stop the MPRP" is overlaid on the image, with "YOU" in red and the rest in white. A white horizontal line is positioned below the text.

# How **YOU** Can Help Stop the MPRP

# How You Can Help

---

## Become a Member

- Visit [stopmprp.com/membership](http://stopmprp.com/membership)

## Donate\*

- Online at GoFundMe [gofundme.com/STOPMPRP](http://gofundme.com/STOPMPRP)
- Via mail to: Stop MPRP, Inc. P.O. Box 329 Parkton MD 21120. Please write "Donation" in the memo line of your check.

## Volunteer

- Visit [stopmprp.com/volunteer](http://stopmprp.com/volunteer) for details

## Connect and Share

- Get our newsletter email updates on our website at [stopmprp.com/how-you-can-help](http://stopmprp.com/how-you-can-help)
- Follow us on social media (see [stopmprp.com/socials](http://stopmprp.com/socials))
- Tell your friends, family and neighbors!

# Contact PSC and Elected Officials

---

## If You Haven't Taken Action Yet – Act Now

Make your voice heard by contacting the PSC and your elected representatives **today**.

Elected Officials: <https://bit.ly/3WOR0jw>

Maryland PSC:  
[piedmontcomments.psc@maryland.gov](mailto:piedmontcomments.psc@maryland.gov)





# Join us Sat 9/28

Just \$10 for an adult, \$5 for kids



**Food Trucks | Beer & Wine  
Live Music by Making Waves Band &  
Mike Kuster of The Catoctin Cowboys  
Word from Senator Young,  
Delegate Mangione, and Delegate Miller  
Raffle Tickets  
Updates from Stop MPRP, Inc**



Saturday, September 28th  
2:00 PM – 7:00 PM  
13601 Glissans Mill Rd  
Mt Airy, MD 21771

*Linganore*  
WINECELLARS



**Who is Stop MPRP, Inc?** Stop MPRP, Inc, is a nonpartisan grass roots, all-volunteer member organization. Our group was established to oppose the Maryland Piedmont Reliability Project (MPRP), a proposed 70-mile high-voltage power line.

Learn more at [stopmprp.com](http://stopmprp.com)

**NO EMINENT DOMAIN FOR CORPORATE GAIN!**

**Tickets**

\$10.00 - Adult | \$5.00 - Child Under 12

We strongly encourage purchasing tickets online in advance of the event.

[stopmprp.com/linganore-fundraiser](http://stopmprp.com/linganore-fundraiser)



A stylized illustration in shades of green and brown. It features a woman on the left, a horse on the right, and a ram in the center. The background includes rolling hills and various leaves. The text 'Q&A' is centered over the scene.

# Q&A

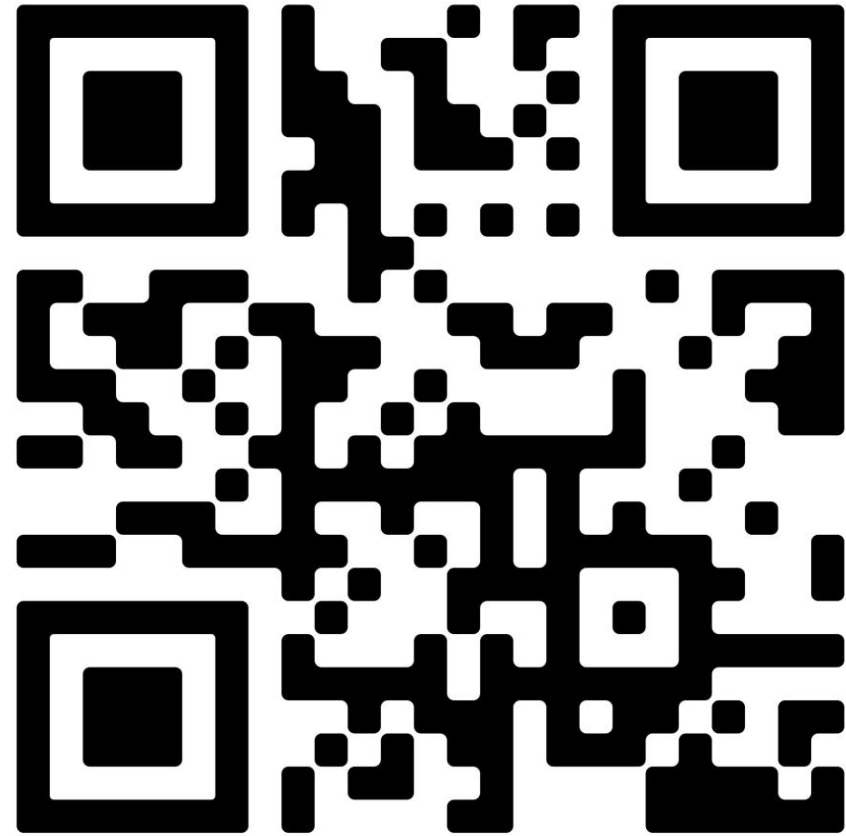
# Website QR Code

---

On the website in the upper right-hand corner, you will see the menu titled “How You Can Help.” From there you can:

- Become a Member
- Donate
- Volunteer
- Sign up for our email newsletter, buy signs, and find our social media channels

You can also reach this information at [stopmprp.com/how-you-can-help](http://stopmprp.com/how-you-can-help)





# Join us Sat 9/28

Just \$10 for an adult, \$5 for kids



**Food Trucks | Beer & Wine  
Live Music by Making Waves Band &  
Mike Kuster of The Catoctin Cowboys  
Word from Senator Young,  
Delegate Mangione, and Delegate Miller  
Raffle Tickets  
Updates from Stop MPRP, Inc**



Saturday, September 28th  
2:00 PM – 7:00 PM  
13601 Glissans Mill Rd  
Mt Airy, MD 21771

*Linganore*  
WINECELLARS



**Who is Stop MPRP, Inc?** Stop MPRP, Inc, is a nonpartisan grass roots, all-volunteer member organization. Our group was established to oppose the Maryland Piedmont Reliability Project (MPRP), a proposed 70-mile high-voltage power line.

Learn more at [stopmprp.com](http://stopmprp.com)

**NO EMINENT DOMAIN FOR CORPORATE GAIN!**

**Tickets**

\$10.00 - Adult | \$5.00 - Child Under 12

We strongly encourage purchasing tickets online in advance of the event.

[stopmprp.com/linganore-fundraiser](http://stopmprp.com/linganore-fundraiser)



A stylized illustration in shades of green and brown. It features a woman on the left, a dog in the center, and a horse on the right. The background is filled with various leaf and branch motifs. The text "Thank you for attending!" is centered over the dog and horse.

Thank you for attending!

---