

Accessibility Guide for Buttermere Cottage

Email: buttermerecottage@gmail.com

Telephone: 01466 780471

Website: www.buttermerecottage.com

Contact: Rachel Nowak



Welcome

At Buttermere Cottage we want to make everyone's stay as enjoyable as possible, and are committed to providing suitable access for all our guests, whatever their individual needs. We aim to accurately describe our facilities and services to give you the confidence that our accommodation is right for you and your specific requirements.

At a Glance

Briefly, the main level of the cottage accessed from the front door is suitable for persons with restricted mobility. This level features the master bedroom and ensuite shower room to the left of the front door. To the right is the lounge leading to the kitchen.

From the lounge there is a flight of stairs to the lower ground floor where the second bedroom and shower room is located. This **would not** be described as easily accessible.

In Depth Information of the Main floor

Steps to Access

- Access to the property is through a wooden gate, before 3 wide steps down. These are 1000mm wide and 580mm long. The path then graduates slightly upwards to the front door. This ramp is permanent.
- There is level access from the main entrance to:
 - Master Bedroom
 - Lounge
 - Kitchen

Access with steps

- There are long steps (width 1000mm x length 1200mm) from the main entrance down the left side of the building to the garden:
 - Cottage Garden 3 steps
 - Gravel on a slope to the patio area.

Bedrooms

Level access bedroom

- The route to the bedroom is 820mm wide.
- The bedroom door is 820mm wide.
- The space to the left side of the king-size bed is 450mm
- The space to the right side of the bed is 800mm
- To access the shower there is a wide step measuring 1200mm x 650mm
- The sliding shower door offers a gap of 460mm
- The shower cubicle measures 1200 x 800mm

Hearing

- The (lounge) TV has subtitles.

Visual

- The walls and the doors have colour contrast. The doors on the upper ground floor are painted grey. The door frames are painted white.

Getting here

Buttermere Cottage, At Damside, Alvah, Banff, Aberdeenshire, AB45 3DB. Sat Nav using the full postcode is accurate to the property.



Travel by public transport

- There is no public transport nearby. A car is essential.



Parking

- We have a car parking area to the left side of the cottage garden. There is a large tree in the middle and enough parking for 3 cars. Your car may be parked right next to the cottage gate. The parking is less than 50 metres from the main entrance. Parking is free. The parking area is gravelled.
- There is ample room for unloading and manoeuvring within the parking area.



Parking space off road and adjacent to Buttermere Cottage

Arrival



Path to main entrance

- From the street to the main entrance, there is 3 step access.
- The route is 1000mm wide.
- There is a low gradient ramp to the front door.



Access 3 steps down



Slight incline up to front door



Path to Cottage entrance



Main entrance

- The main entrance has level access.
- The main door is side hung and manual.
- The door is 820mm wide.
- When you arrive, we can help carry your luggage.

Getting around inside

Visual Impairment - General Information

- We have colour contrast between walls and doorframes.



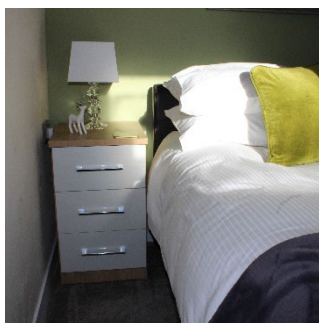
Colour contrasting door frames throughout

Bedrooms

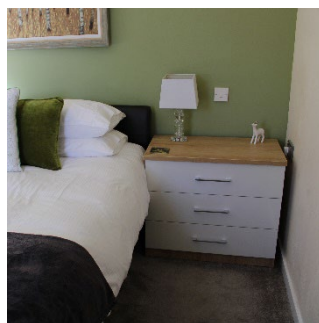
- All bedrooms have windows.
- Bedrooms have ceiling lights, bedside lamps and natural daylight.
- TV have subtitles.
- All bedrooms are non-smoking.
- We can move the bedroom furniture, to improve accessibility.

Accessible Master Bedroom

- The route to the bedroom is 820mm wide. The bedroom door is 820mm wide. There is 450mm space on left side of the bed and 800mm on the right side.
- The bed is 650mm high.
- The door to the ensuite from the master bedroom is 820mm wide.



Space to left of bed



Space to right of bed

- Ensuite door opening into the shower room.
- There is no natural light in the ensuite shower room.
- The bathroom has a 100mm single step onto a platform measuring 1200mm x 650mm in front of the shower door.
- The toilet does not have handrails. There is 450mm to the left side of the toilet. There is no accessible space to the other side.

- There is 1000mm space in front of the toilet to the far wall.
- The toilet seat is 420mm high.
- The taps are twist operated.
- The basin is 800mm high.
- The walls and the bathroom fittings have colour contrast.
- The shower head can be lowered to 1250mm from the floor if required.
- The sliding shower door offers a gap of 460mm.



Master Bedroom Ensuite Shower Room



As seen from the bedroom

Self-Catering Kitchen

- Entrance to the kitchen is via an open door from the lounge. The door has been removed. The width of this gap is 750mm.
- From the main entrance to the kitchen, there is level access.
- The route is 820mm wide, or more.
- The work surface has no clear under-space. The height of the work surfaces are 900mm.
- The hob is at a height of 900mm.
- There is no clear under-space beneath the sink.
- The oven is low level. The height of the full width handle is 720mm. It pulls forward and down.
- The dining table has an under table height of 660mm. The seats of the chairs are at a height of 470mm.
- The crockery is kept in eye level kitchen units but can be moved to base units on request.
- There is a microwave on the work surface at a height of 900mm and above.
- The fridge freezer has the fridge at the top. The handle is at the bottom of the door at 840mm.



Lounge

- From the main entrance to the lounge, there is level access. The route is 820mm wide. The door is 820mm wide.
- The lounge area has open door frame access the kitchen. There is no door.
- There are two sofas. Both sofa seats are at a height of 470mm from the floor.



Second Bedroom (Downstairs)

This room is not access friendly. It is located on the lower ground floor, down a flight of stairs from the main living quarters and master bedroom.

Getting around outside

Garden

From the main entrance to the side garden, there are 3 steps. These are 1000mm wide with a length of approximately 120mm, a drop of 150mm. There is no ramp. The path leads round the cottage to a large sloped gravel area leading to the patio and steading occupied by the owners.

From the main garden to the terrace there is grass, gravel and 1 step to the patio area. Here there is a picnic bench. The table is 700mm high from floor to table edge. The bench seating height is 480mm. These are fixed seats with access points at either end.



Lower end of the garden and patio



Steps down to the garden and gravel

Customer Care Support

Accessibility equipment

- The nearest toilet area for assistance dogs is located in the garden to the side of the cottage.

Customer care support

- We are usually available in the steading behind the cottage, should assistance be required.
- Guest information files in the cottage give details of local services and emergency medical care.
- Mobile phone reception is variable depending on your network.
- In emergency the landline at the steading is available to guests.