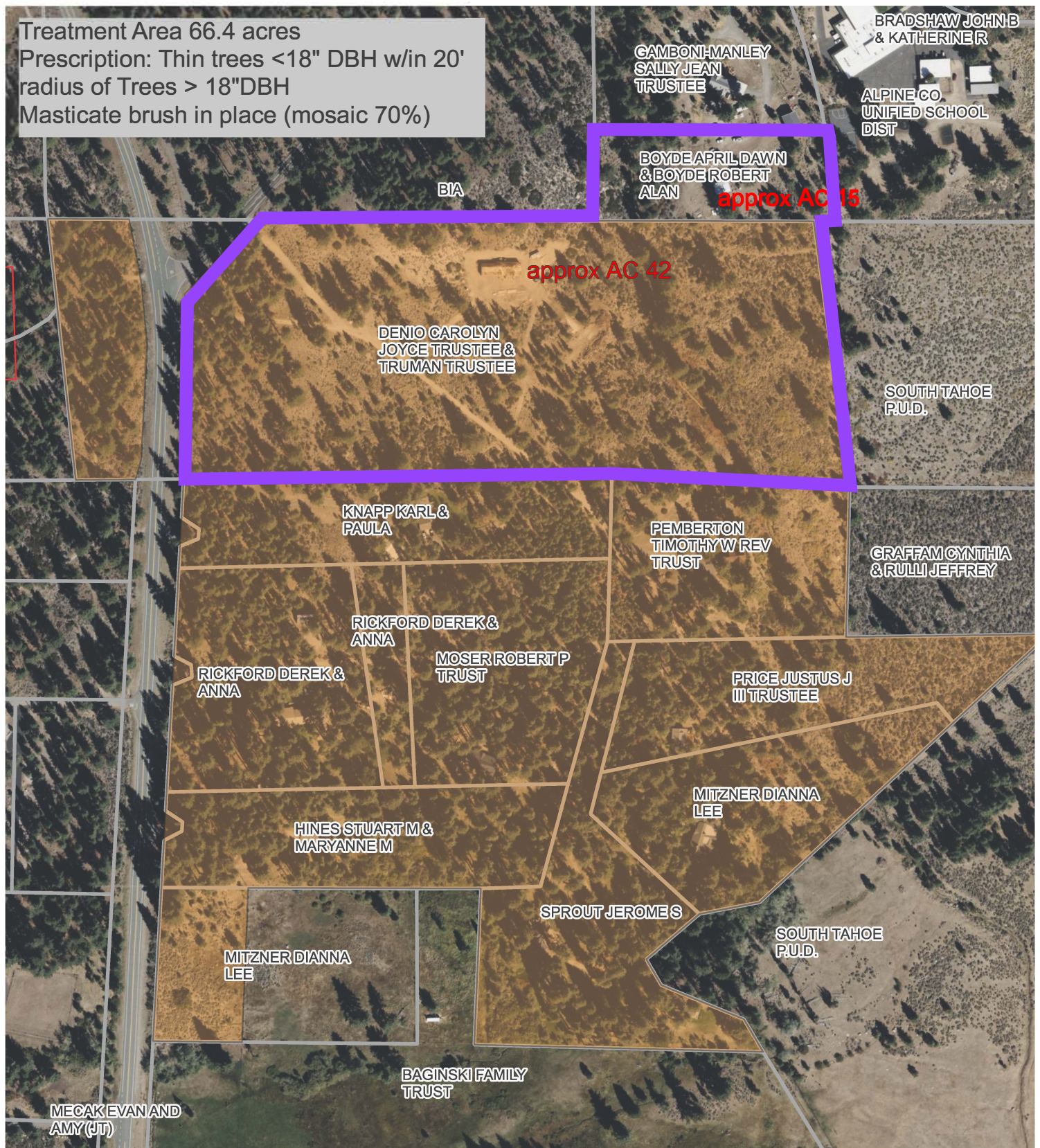


Treatment Area 66.4 acres  
 Prescription: Thin trees <18" DBH w/in 20'  
 radius of Trees > 18"DBH  
 Masticate brush in place (mosaic 70%)



Project CRS: UTM Zone 11N  
 (m)

Map Source: Public Data / FEMA/, Alpine County Assessor

## Alpine Fire Safe Council

*Providing community leadership, resources and a forum to improve  
 wildfire preparedness and prevention in eastern Alpine County*



## Figure 1: Lower Manzanita Lane

Project:

**Eastern Alpine County  
 Community Wildfire Prevention**

filename://AFSC/Grants/CALFIRE\_CWPG

Date: January 10, 2024

Client:

**CAL FIRE**