

Slab & Gab
April/May 2026

Natural History
Museum of Los Angeles
County



President's Message:

If March was momentum, then April is where things begin to take root.

This season invites curiosity. It calls us to look closer, to ask questions, to follow the quiet pull of discovery wherever it leads. In the world of lapidary, that curiosity is where everything begins—every cut, every polish, every finished piece starts with someone willing to wonder, "What's inside?"

But curiosity alone isn't enough. It must be met with care, with patience, and with a deep respect for what we hold in our hands. That's where preservation comes in. Whether it's a specimen, a story, or a technique passed down through generations, we are not just shaping stone—we are preserving knowledge, history, and inspiration for those who will follow after us.

And that responsibility lives within this club.

I want to take a moment to recognize each of you for the role you play in that. From the simple but meaningful act of showing up to meetings... to bringing food and creating space for connection... to giving up your free days to help run our booth at Garden Fest—every contribution matters.

Because of you, we are growing. At our last meeting alone, we welcomed seven new members, and we've already seen new faces stepping into the shop, eager to learn and get their hands on the work. That's not by accident—that's the result of a community that shows up, shares, and inspires.



A Garden Fest visitor showing off his collection of gorgeous lapidary treasures.

And that's something worth celebrating.

Spring is a season of new beginnings, but growth doesn't happen all at once. It happens in small, steady steps. In trying a new technique. In asking a question. In making a mistake and learning from it. In encouraging someone else to take that next step forward.

As a club, we are growing.

In our skills.
In our reach.
In our sense of community.

And individually, each of us is on our own journey—refining, learning, discovering what we're capable of with time, patience, and intention.

So let this season be your invitation.

Stay curious.
Keep discovering.
Honor what we preserve.
And don't be afraid to grow.

Because what we are building here isn't just a collection of stones or skills —

It's a living, breathing community of people who are inspired to create, to learn, and to carry this craft forward.

And that's something truly worth nurturing.

With All My Gratitude,

Cristian Baltazar

Cristian Baltazar
President
San Joaquin Valley Lapidary Society



President's Message

Society Info

On the Cover

Gem of the Month:
The Diamond

Garden Fest 2026

When Kern County
First Made Headlines

Grinding Grit &
Garage Genius

CMFS Corner

Birthday Spotlight:
April/May

Rockin Recipes

The Whispering Whimsy

Upcoming Gem &
Mineral Shows

SJVLS Member
Submitted Events

Board of
Directors



Our very own Field Scout Bernie and Director Gerald representing, and doing us proud!



Society Info



General Meeting: May

May 11th @ 6:30 pm at

East Bakersfield Veteran's Hall

2101 Ridge Road, Bakersfield, CA 93305

May's meeting will include the
Member's Market.

Bring your goods to sell to other members.

Doesn't have to be rock related.

We will be having a Chili cookoff. Show off
those cooking skills and bring your best chili
to share and be

Hope to see you all there!

Vendor setup 5 pm – Doors Open 5:30 pm



Welcome New Members

We are excited to welcome our new
membersthat joined at our last meeting.

Donny Rose

Catherine Vasquez

Teisha Wheaton

Carl Stimmel

Opal Stimmel

Support SJVLS and look out for updates
on our socials

Website: <https://sjvls.club>

Instagram: @sjv_lapidary

Facebook: San Joaquin Valley Lapidary Society

Submission Deadline for Slab N Gab:

The submission deadline is the 25th of every month.

This is for articles, photographs and any other
information you would like to be included.

Please submit to the Newsletter Director at
chelle.colemanmc@gmail.com

Field Trip Info:

June: Picnic at San Simeon.

More details to come.

ON THE COVER

THE LOS ANGELES NATURAL HISTORY MUSEUM

On April 4, 2026, My family and I took a drive down to Los Angeles. Before we knew it, we were standing in front of The Los Angeles Natural History Museum. None of us had ever been there and little did we know, that it was going to leave us with so many fantastic memories! As we entered, there stood the fossil remains of a T-Rex and a Triceratops! We all know that these magnificent animals were big, from reading about them and studying them in school. But, until you see them up close and personal, you can't truly comprehend, just how BIG they really were! It was so cool to see my three year old granddaughters eyes, as she witnessed these ancient giants for the first time! It didn't take me long before I found the gem and mineral exhibits! There were so many beautiful specimens, seeing some of these minerals for the first time. It was almost too much to take in. Everywhere that I would look, I seemed to learn something new. What each specimen was, where it came from, and how old they were.

HISTORY

The Los Angeles Natural History Museum was built in 1913 as The Museum of History, Science, and Art. It is the largest natural and historical museum in the Western United States. It holds a collection of nearly 35 million specimens and artifacts covering 4.5 billion years of history. It showcases three floors of permanent exhibits.

- Dinosaur Hall: Features over 300 fossils and 20 mounted skeletons.
- Gem & Mineral Hall: Showcases over 2,000 minerals, rocks, and gems.
- Dioramas: Life-sized displays of animals from around the world.
- Live Experiences: Dinosaur encounters with puppets and live animal encounters.

Written By: Topher Coleman



Stegosaurus



T-rex foot



Turquoise

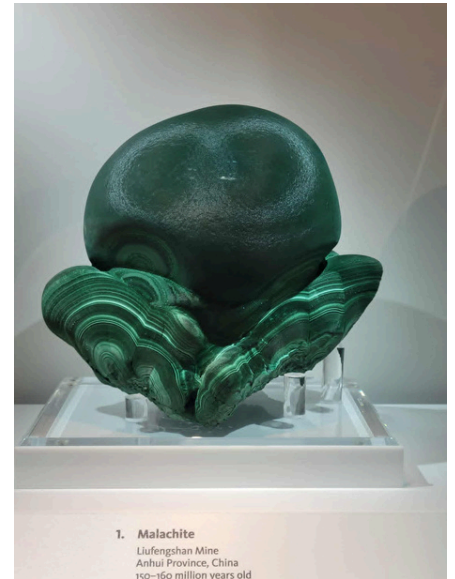
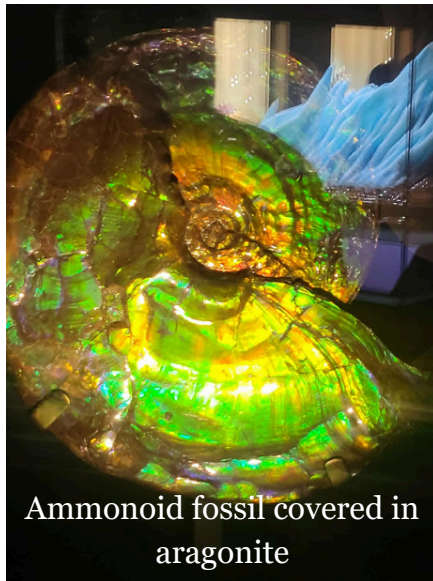


T-rex head

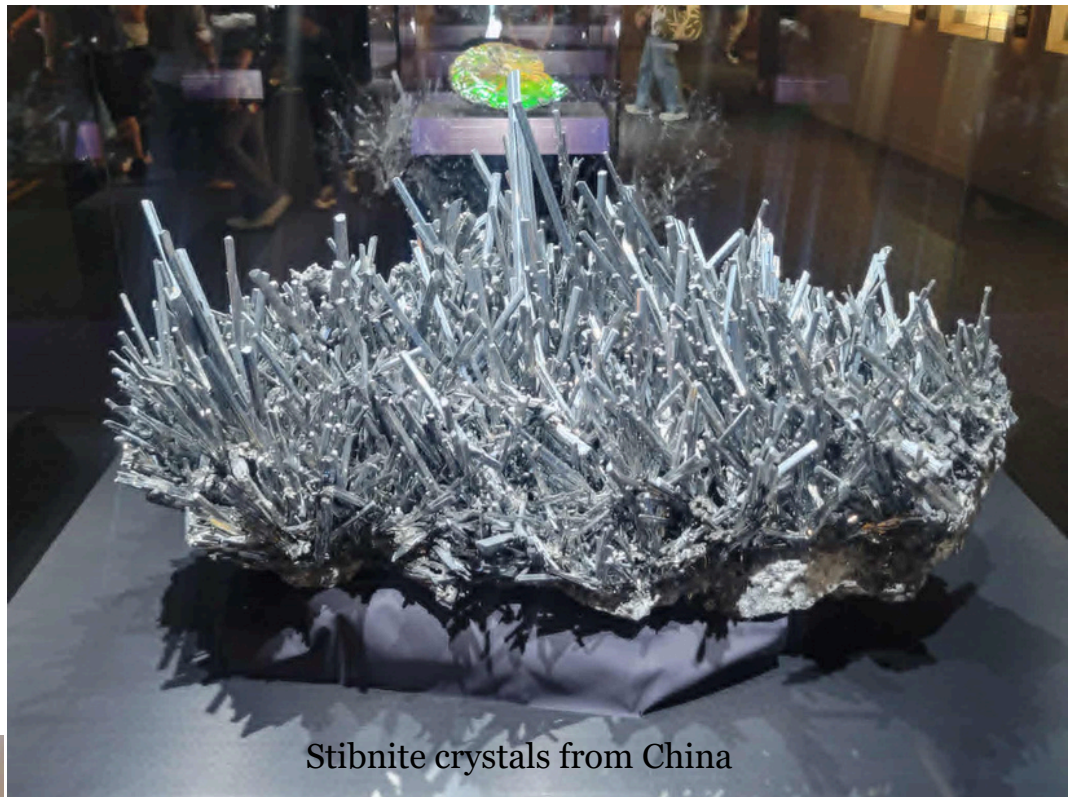


Triceratops





Spessartine on smoky Quartz and feldspar



Emerald



THE GEM OF THE MONTH: THE DIAMOND



Our love for the April birthstone started in India, where diamonds were gathered from the country's rivers and streams. Traded as early as the fourth century BCE, diamonds were coveted by royalty and the wealthy. Later, caravans brought Indian diamonds, along with other exotic merchandise, to medieval markets in Venice. By the 1400s, diamonds were becoming fashionable accessories for Europe's elite. The first diamond engagement ring on record was given by Archduke Maximilian of Austria to his betrothed, Mary of Burgundy, in 1477. Recent evidence supports the origin of the legendary 45.52 carat (ct) blue Hope diamond in India's Golconda mining area and its sale to King Louis XIV of France (then known as the French Blue diamond) in 1668.

In the early 1700s, as India's diamond supplies began to decline, Brazil emerged as an important source. Diamonds were discovered when gold miners sifted through gravels on the banks of the Jequitinhonha River in Minas Gerais. Brazil dominated the diamond market for more than 150 years.

The discovery of diamonds near Kimberley, South Africa, in the late 1860s marked the beginning of the modern diamond market. Entrepreneur Cecil Rhodes established De Beers Consolidated Mines Limited in 1888, and by 1900 De Beers controlled an estimated 90 percent of the world's production of rough diamonds. The largest diamond ever found – at 3,106 ct (621 grams) – was recovered from South Africa's Premier mine in 1905. From it was cut the pear shaped 530 ct Cullinan I diamond, also known as the Great Star of Africa, which is now set in the Royal Sceptre with Cross and housed with the other Crown Jewels in the Tower of London.

An anonymous second-century poet maintained that this birthstone for April warded off the evil eye – a malevolent look believed to cause sickness, poverty and even death. The April birthstone was even believed to have healing powers. Over the centuries, the diamond birthstone was thought to be an antidote to poison and provide protection against the plague. Some claim that it is a boon for longevity, strength, beauty and happiness.

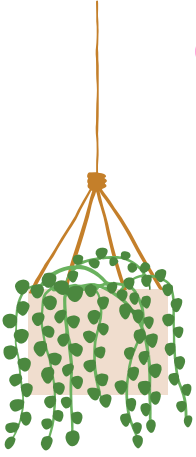
In addition to being the April birthstone, diamond is the gift of choice for the 60th and 75th wedding anniversaries. And, of course, today the diamond engagement ring has become a near-universal symbol of love and marriage.

Where is Diamond Found?

The birthstone for April is now mined around the world. By the early 2000s, South Africa had been joined by other African nations as major producers of rough diamonds. These include the Democratic Republic of the Congo (previously known as Zaire) and Botswana. The former Soviet Union opened its first major mine in 1960, and Russia is now one of the top producers by both volume and value. Diamond mining expanded dramatically with the opening of the Argyle mine in Australia in 1983 and the discovery of several diamond deposits in northern Canada in the 1990s.

Diamonds in Botswana lie in the typically hot, semi-arid eastern region of the country. These prolific mines have brought a boom to the economy, creating a growing middle class. The country is also a diamond hub, where approximately 40 percent of the world's supply of rough diamonds are sorted and valued.

Garden Fest 2026 : A Day Rooted in Beauty and Community



What a beautiful day it was at Garden Fest 2026

The event was filled with vibrant plants, creative yard decor, and inspiration everywhere you looked. And among all that greenery, our collection of precious gems added a different kind of beauty - natural treasures from the earth that bring something truly special into any home.

The day started well before sunrise. Gerald and Cris arrived at 5:30 AM to begin setting up, followed by Ashley and the rest of the team. But the real hustle actually began Wednesday night, with Gerald, Cristian, and Ashley knocking out a full mini inventory in the front yard until nearly 10 PM.



This event wouldn't have been possible without the incredible support from our club members. From setup to helping throughout the day, so many people showed up and gave their time and energy. That kind of teamwork is what makes these events so meaningful.



Ashley and Cristian taking a look at the tables to make sure they look good!



Garden Fest 2026 Continued:



Some of the goods we had available for sale

While attendance was a bit lighter than in previous years, the day was still a success. We connected with the community, shared our passion for the lapidary arts, and generated strong sales to support the club.

Thank you to everyone who came out and helped make Garden Fest 2026 such a memorable event. It wasn't just about plants or stones- it was about community, commitment, and celebrating the beauty that comes from the earth.

By: Gerald Capps



Topher and Michelle's Niece Savannah with her bunny, they came out to support Garden Fest



The turnout for volunteers was fantastic



Salem and Ashley working the booth

When Kern County First Made Headlines..

The Early Story Behind Our Stones

Kern County's stones were making headlines long before they were ever polished. In the early 1900s, the region was gaining recognition not for finished gems, but for the raw value hidden beneath its surface. Mineral deposits across Kern County drew interest from prospectors, investors, and developers eager to uncover what the land had to offer.

One of the earliest known newspapers mentions comes from December 9, 1912, when the Bakersfield Morning Echo reported on mineral activity near Koehn Lake. The article highlighted the sale of the well-known Salt Springs property, signaling just how important these resources had become to the area's growth and economy.

At the time stones weren't admired for their color, patterns, or artistic potential. They were measured by weight, value, and industrial use. Yet, within those same materials lay something more - something that would eventually inspire a new kind of appreciation.

As time passed, perspectives began to shift. What was once seen strictly as resource gradually became recognized as art. The same agates, jaspers, and quartz that existed quietly beneath the surface started finding their way into the hands of collectors and craftspeople. With simple tools and patience, early lapidary artists transformed rough stones into polished pieces that revealed hidden color, pattern, and depth.

The transformation - from resource to art - is what makes this history so meaningful. Today, when we cut, polish, and admire stones, we are part of a much longer story. A story that began not in a workshop, but in the pages of a newspaper over a century ago. A story that reminds us that every piece we work with has a past - one rooted deep in the earth and shaped by time.

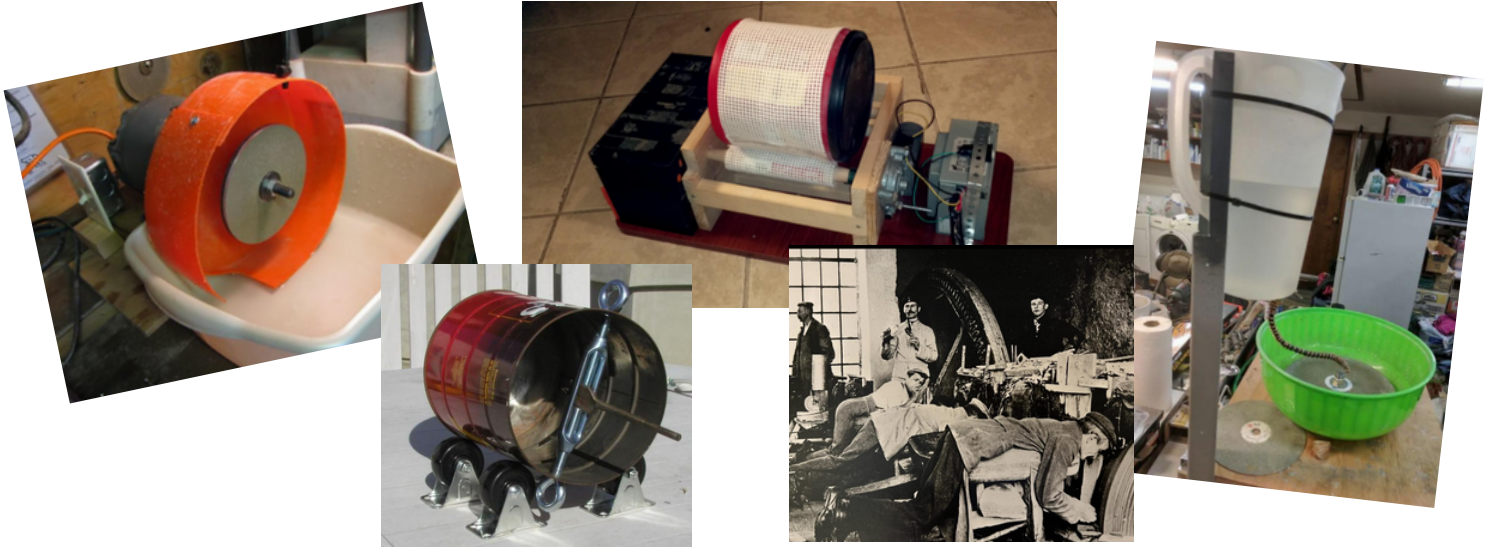


Halite

Koehn Lake evaporite deposit, Koehn Lake, Saltdale, Fremont Valley, Kern County, California, USA

Submitted by: Gerald Capps

Grinding Grit & Garage Genius: The Homemade Roots of Lapidary Arts



Before lapidary shops had sleek machines, digital controls, and polished workstations, the craft lived in garages, backyards, and sheds – powered by creativity, determination, and a whole lot of ingenuity.

Early lapidary artists didn't just shape stones... they built the very tools that made it possible. In places like Kern County, where rockhounding has long been part of the culture, hobbyists often turned everyday materials into working equipment. Old washing machine motor became grinding wheels. Scrap metal was repurposed into frames. Even discarded pipes and wood were transformed into polishing stations. If it spun, vibrated, or could hold a stone steady - it had potential.

These homemade machines weren't always pretty, but they worked. And more importantly, they gave people access to the craft without the high cost of professional equipment.

For many, this was the gateway into lapidary - turning a rough, dusty rock into something smooth, brilliant, and completely unique.

There was also a certain rhythm to these setups. The hum of a reused motor, the steady drop of water over a grinding wheel, the patience it took to shape each piece by hand. It wasn't just about the finished stone - it was about the process. Every cut, every polish, every adjustment told a story of trial, error and eventual success.

What makes this history even more special is how much of it still lives on today. Many modern lapidary artists learned from someone who once used (or still uses) these homemade setups.

Some even prefer them, valuing the hands-on connection and control they provide.

In a world of advanced tools and technology, it's worth remembering that this craft was built on creativity, resourcefulness, and a passion for bringing out the beauty hidden inside stone.

Because at its core, lapidary has never just been about machines - it's about the people who dared to build them.

CMFS CORNER

May Highlights

The California Federation of Mineralogical Societies website: cfmsinc.org

CMFS is a non-profit organization representing mineralogical and lapidary clubs in California.

CMFS purpose is to encourage study in mineralogy and earth science by:

- Providing exhibits with samples of rocks and minerals within California, Nevada and Hawaii
 - Provide educational programs
 - Provide educational speakers on minerals and lapidary art
 - Provide field trips for exploration, study and collection of specimens.
 - Provide a newsletter with information about activities and services for member clubs
- Provide a scholarship program giving financial assistance to students majoring in earth science and lapidary arts.

Endowment Fund: Provides a stable source of income to financially assist programs and services that CFMS provides to members. If you are interested in giving to the endowment fund, go to cfms.inc.org, forms, and fill out the Endowment form.

CFMS Annual Show & Convention

CFMS Annual Show & Convention will be held in Reno, NV hosted by the Reno Gem and Mineral Society, Fri-Sun., Sept.18-20, 2026.

Rock & Gem Magazine is endorsed as our hobby magazine. Pam Freeman, editor offers a 61% discount to you and AFMS gets a 15% commission that goes to the endowment fund. Again, go to [cfms.inc.org/forms/Rock & Gem Magazine](http://cfms.inc.org/forms/Rock%20Gem%20Magazine).

CFMS Show dates for May & June 2026

May 9, 2026 – Roseville, CA Roseville Rock Rollers Gem & Mineral Society @ the Grounds,
200 Corporation Yard Rd., Lot L, Roseville, CA Hours: Sat only 9-3

June 27-28, 2026 – Culver City, CA Culver City Rock & Mineral Society Veterans Memorial Auditorium, 4117 Overland Ave.,
Culver City, CA 90230 Hours: Sat 10=6, Sun 10-5

See CFMS website for list of shows for the rest of 2026

Camp Paradise:

Have you been to Camp Paradise? If no, you're missing out on an opportunity to learn metal smithing, beading, wax casting or soap stone carving, are just a few of the classed offered. Let you SJVLS Board know if you are interested, as the club will pay part of your week's fee. You must sign up online and pay fee and club will reimburse you when you return. Fee includes room, board and meals. Registration deadline is August 1st.

Session One: August 16 – 22, 2026 • Session Two: August 23 – 28, 2026

Check out the CMFS monthly newsletter. There's more information you may want to learn about.



April Birthstones



April born can have a myriad of gems as their birthstones. Diamond is April birthstone, Topaz and Carnelian are guardian angel and special apostle birthstones respectively, Crystal is Aries astral birth gem, Ruby and Diamond are Taurus zodiacal birthstones. With such a myriad of wonderful birthstones to choose from, which one should you pick? Well, it may be the gem that reflects your personality, it may be the birthstone that you feel most connected to, it may be the birth gem that you like the most or that suits you better, or it may be all of them. In other words, it's totally up to you!



The Daisy and Sweet Pea is April's Flower

Narcissus is a genus of predominantly spring flowering perennial plants of the amaryllis family, Amaryllidaceae. Various common names including daffodil, ^[Note 1] narcissus (plural narcissi), and jonquil, are used to describe some or all members of the genus.

The species are native to meadows and woods in southern Europe and North Africa with a centre of diversity in the Western Mediterranean. Both wild and cultivated plants have naturalised widely, and were introduced into the Far East prior to the tenth century

May Birthstone



Emerald, the birthstone for May, has been beloved for millennia, evoking rebirth and renewal. Widely regarded as the definition of green, emerald is the perfect color for spring. From the poetic description of Ireland as “the Emerald isle” to the vibrant green of the famed gemstone itself—the May birthstone emerald has captured hearts and minds through the ages. Variations of this rich green color suggest soothing, lush gardens. Legend has it that emerald has the power to make its wearer more intelligent and quick-witted, and it was once believed to cure diseases like cholera and malaria.

Today, it's the gemstone given for the 20th and 35th wedding anniversaries.



May's Birth flower is Lily of the Valley and Hawthorn

Lily of the Valley (*Convallaria majalis*): This delicate, bell-shaped white flower is known for its sweet fragrance and symbolizes returning happiness, purity, and gentle emotions. It is often used in weddings, bridal bouquets, and high-end floral designs. Despite its beauty, it is highly poisonous if ingested and has a short lifespan once cut, making it fragile for long-term decoration .

Hawthorn (*Crataegus monogyna*): A hardy shrub with small blossoms, Hawthorn represents hope, protection, and the strength of spring. It is more robust than Lily of the Valley and is commonly used in outdoor landscaping and garden designs

SJVLS April/May Birthdays

4/4 Elizabeth Barnhart
4/13 Lisa Witthans
4/16 Jan Lockhart
4/23 Ken Baird
4/24 RJ Cornwell
Claudia Ramirez

Edie Ogborn 5/1
Carl Hulick 5/12
Felicity Zavala 5/13
Jonathon McClain 5/13
Michelle Beil 5/14
Hannah Witthans 5/14

Heidi Millbury 5/19
Mark Hasselbar 5/30

ROCKIN' RECIPES

Steak and Cheese Meat Pie and Scotch Eggs

I took some inspiration from attending the Scottish Games with Topher and while there we tried a steak and cheese meat pie and Scotch eggs. It was so good!! Hope you all try these and enjoy

Ingredients

1kg beef (brisket, rump etc.)
3 Tbsp plain flour
2 Tbsp oil
2 onions, diced
2 cloves garlic, crushed
1 carrot, finely chopped
2 tsp chopped rosemary
2 beef stock cubes
2 cups boiling water
2 tsp Worcestershire sauce
4 Tbsp cornflour
100g cheddar cheese, grated

2 sheets Shortcrust pastry (for base)
300g or 2 sheets Puff pastry (for top)
1 egg, whisked (for egg wash)



Instructions

Filling: Chop the beef into large 3cm chunks. Coat with flour and season with salt.

Heat oil in a lidded cast iron pan over high heat. Brown the beef in two batches for maximum flavour, then set aside. Prepare the vegetables, then add onions to the pan over a medium heat, with a dash of water. Scrape up all the browned bits from the base, these add great flavour to the gravy. Cook until onions have softened. Add garlic, carrot, rosemary and beef to the pan. Dissolve the oxo cubes in boiling water, pour into the pan just covering the meat and then add the Worcestershire sauce. Season with salt and pepper.

Bring the pan to the boil, then cover and reduce the heat to low for 2 hours until the beef is tender.

Make pastry case (see pastry section)

After 2 hours remove the lid and boil for 10-15 mins to reduce some of the liquid. Mix cornflour with a little cold water to make a slurry. Stir into the beef mix and bring to the boil to thicken. Then, pour it all into a tray to cool.

Pastry: Preheat the oven to 180°C fan bake. Lightly grease a 22cm pie dish.

Line the dish with shortcrust pastry. If needed, join pieces by scoring and brushing with egg wash. Roughly trim the edge leaving some excess hanging over the sides.

Cover the base with baking paper and fill with baking beans. Blind bake for 15 minutes.

Remove weights and bake for another 10 minutes until the base is lightly golden.

Once the filling has cooled, spoon it into the pastry base and sprinkle with grated cheese.

Top with puff pastry, egg wash the edges to seal, and crimp with a fork or your thumbs.

Make a few small holes in the top to allow steam to escape. Brush with egg wash.

Bake at 180°C for 40-45 minutes until golden and crispy.

Cont. Next page

Notes

Brown the beef in batches to get a rich, deep flavour in the filling. Don't overcrowd the pan.

Let the filling cool before adding to the cooled pastry case— this stops the base from going soggy.

For a glossy, golden top, don't skip the egg wash. You can also use milk if preferred.

To stop the pastry from shrinking, it helps if it's chilled before baking. After lining the pie dish, pop it in the fridge for 15–20 minutes before blind baking. Avoid stretching the pastry when pressing it into the dish, as it will shrink back in the oven.



Crispy Scotch Eggs with Runny Yolk

Soft-boiled eggs wrapped in pork sausage, crumbed then deep-fried until golden and crispy.

Ingredients

Scotch eggs

7 eggs (5 for boiling, 2 for the egg wash)

1/2 cup fresh parsley

2 stalks spring onion

1 sprig thyme (leaves only)

500 gm pork sausages

2 tbsp plain white flour

1.5 cups panko breadcrumbs

vegetable oil for deep frying

Sour cream and horseradish sauce

4 tbsp sour cream

1 tbsp horseradish

Instructions

.Place five of the eggs in a saucepan and cover with cold water. Bring to the boil over high heat, then reduce heat to medium and simmer for 3.5 minutes.

Towards the end of the cooking time prepare an ice bath

As soon as the eggs are done crack the shells slightly then put in an ice bath

While the eggs are boiling, finely slice the parsley and spring onion, and remove the thyme leaves. Place in a medium sized bowl.

Squeeze the sausage meat from its casing, and place the meat in the bowl with the herbs.

Use cold wet hands to combine the meat and herbs. Divide into five equal portions, then roll out into a round flat shape.

Get your breading ingredients ready by placing the flour, remaining two eggs and breadcrumbs into separate bowls. Beat the eggs.

Shell the eggs under cold running water, then dust with the flour.

Heat the oil over high heat in a deep frying pan. Use enough to come about halfway up the eggs.

While the oil is heating, use cold wet hands to wrap the meat around each egg, smoothing the edges to ensure the egg is fully enclosed.

One by one, dunk into the egg wash, then dip into the breadcrumbs. Ensure each egg is fully coated.

Once the oil is hot, place the balls into the frying pan, cook over medium-high heat for 8.5 minutes, turning regularly.

Cook in batches if necessary. Remove the cooked scotch eggs from oil and drain on crumpled paper towels.

Make the sauce by mixing the sour cream and horseradish in a small bowl.

To serve, cut the scotch eggs in halves or quarters, then eat with the sour cream and horseradish sauce.

The Whispering Whimsy

Pictures taken by SJVLS Members
Pictures submitted by Galen Dukes



Submit yours to: tophercoleman@hotmail.com

Upcoming Gem and Mineral Shows

Annual Tailgater; Roseville Rock Rollers Gem & Mineral Society - 05/09/2026, Hours: 9:00 -3:00

Venue: @ the Grounds, Roseville Rock Rollers Lapidary Shop & Yard; Address: 200 Corporation Yard Road, Lot L @ the Grounds, Roseville Rock Rollers Lapidary Shop & Yard, Roseville, CA

Anza Rock Gem and Mineral show - 05/15/2026 - 5/17/2026; Venue: Overland Field; Address: 56333 CA Hwy-371, Overland Field, Anza, CA 92539

Memorial Day Weekend Art, Gem & Mineral Show - 05/23/2026 - 5/25/2026; Hours: Sat/Sun 10:00-5:00 Mon 10:00-4:00; Venue: Big Bear Masonic Event Center; Address: 385 Summit Blvd; Big Bear Masonic Event Center Big Bear Lake, CA 92315

Julian Rocks Gem Show Memorial Day Weekend Gems, Minerals, and Crafts Show - 05/23/2026 - 5/25/2026
Venue: Julian Town Hall, Address: 2129 Main Street; Julian Town Hall, Julian, CA 92036

Northern CA Mineralogical Association Symposium - 05/29/2026- 5/31/2026;
Venue: El Dorado Community Hall, Address: 6139 Pleasant Valley Rd, El Dorado Community Hall El Dorado, CA 95623

Gold Coast Gem Show - 6/06/2026 - 06/07/2026
Hours: Sat 10:00-5:00 Sun 10:00-4:00 - Venue: Ventura County Fairgrounds, Address: 10 W Harbor Blvd, Ventura County Fairgrounds, Ventura, CA 93001

Monterey Bay Jade Festival - 06/12/2026 - 6/14/2026
Hours: Fri 12:00-6:00 Sat 10:00-6:00 Sun 10:00-4:00; Venue: Custom House Plaza, Address: Monterey State Historic Park, Custom House Plaza, Monterey, CA 93940

San Francisco Crystal Fair - 06/13/2026 - 6/14/2026
Hours: Sat 10:00-6:00 Sun 10:00-4:00; Venue: San Francisco County Fair Building, Address: 1199 9th Ave - Golden Gate Park, San Francisco County Fair Building, San Francisco, CA 94122

Delvers Rock and Gem Parking Lot Sale - 06/20/2026, Hours: 9:00 - 4:00; Venue: Holy Redeemer Lutheran Church
Address: 14515 Blaine Ave, Holy Redeemer Lutheran Church, Bellflower, CA 90706



SJVLS MEMBER SUBMITTED EVENTS

Hart Flat Farmer's Market

in Hart Flat off of Hart Flat Road
 starting June 4th and will run every other
 Thursday from 4 pm - 7 pm

No charge for vendors, so anyone can set up a table

Please note: there is no electricity or bathrooms

If interested please contact Fawn Dessy at (661)204-3011

for details and sign up information



Purpose at Panorama Volunteer Opportunity - BZP Bakersfield

Date and Time
 Multiple times · Apr 11 - Jun 13, 2026 · See below

[Add to My Calendar](#)

Address
 Panorama Vista Preserve
 901 E Roberts Ln, Bakersfield, CA

Info & Tickets

eventbrite.com
[View website](#)



Scan to view on mobile phone



2026 Lilac Festival

Date and Time
 May 16 - 17, 2026 · Sat, 9:00 AM - Sun, 5:00 PM (PDT)

[Add to My Calendar](#)

Address
 Village of Pine Mountain Club
 16215 Pine Valley Ln, Pine Mountain Club, CA 93222, USA

KIDS & FAMILY

Info & Tickets

[View website](#)



Scan to view on mobile phone



Come enjoy some Celtic Music at Dagny's Coffee Shop on the 4th Wednesday of every month from 6-8 pm. 1600 20th Street

Submit your event to Michelle Coleman at chellecoleman.mc@gmail.com

2026 San Joaquin Valley Lapiary Society Board Of Directors

CRISTIAN BALTAZAR
President

T: president.sjvls@gmail.com
E: (661) 472-4563

ASHLEY PENNER
Vice President

T: (316) 249-7204
E: vpsjvls@outlook.com

JAN LOCKHART
Secretary

T: (661) 333-3975
E: lockhart.janice26@gmail.com

LISA WITTHANS
Treasurer

T: (661) 342-4425
E: sbrlisa@yahoo.com

PAULA SCHEIDEMAN
CFMS Representative

T: (661) 437-5996
E: paulawillisscheideman@yahoo.com

BERNIE BENTSEN
Field Scout

T: (661) 496-7393
E: bentsenbab@gmail.com

MICHELLE COLEMAN
Newsletter Editor

T: (661) 364-1720
E: chellecoleman.mc@gmail.com

TOPHER COLEMAN
Director

T: (661)364-9690
E: tophercoleman@hotmail.com

GERALD CAPPS
Director

T: (661) 472-3788
E: geraldscapps@gmail.com

SALEM JOHNSTON
Director

T: (661) 699-5098
E: cameron.johnston531@gmail.com

