

ONLY  
\$10 PER  
ENTRY

Bring Home the Magic this Fall!  
Don't Miss Your Chance to WIN this Special Button Treasure!  
Pennsylvania State Button Society's



(Winner does not need to be present)

VALUE: \$250+ GRAND PRIZE!

One lucky person will WIN an  
**INCREDIBLE TEN BUTTON Collection**  
**MOUNTED & FRAMED!**

Buttons shown are the actual buttons in the giveaway. For a more accurate & detailed description/size, please reference the chart on the back of this flyer. Backs of buttons are shown beside button front pictures.

DATE OF DRAWING:  
**SUNDAY, AUGUST 30 @ NOON**  
2026 FALL BUTTON SHOW ALTOONA, PA

HOW TO ENTER:

Complete an entry as follows (one card per entry)

- **ALL MAIL IN ENTRIES MUST** include: Name, Address, & Phone # **along with \$10 for each entry** written on a white 3x5 index card
- Mail/Return your cards in advance (or hand in at the Show):

Anita Housman  
1145 Newberry Road  
Middletown, PA 17057  
(717) 756-7467 (call or text)  
aahousman2@gmail.com

Please do not mail cash. If sending entries by check or money order, please make the donation entry payable to:

PA State Button Society  
Email: PAStateButtonSociety@gmail.com





Size: Large  
Very Dimensional  
Brass Fruit Button  
Artist: Faith Strobel BM

Donated by  
Keystone Button Club

Front



Back



Size: Large  
Ceramic Button-Windmill Scene  
Modified Square  
Backmark: Delfts Holland

Donated by  
Keystone Button Club

Front



Back



Size: Medium  
Polyester Scrimshaw Rabbit  
Artist:  
J.P. Cox from New Jersey  
(PA Button Dealer)

Donated by  
PA Dutch Button Club

Front



Back



Size: Large  
Brass with Green Celluloid  
Center with Paste  
Interesting floral border  
Backmark Gesetzlich  
Geschultz

Donated by PA Dutch  
Button Club

Front



Back



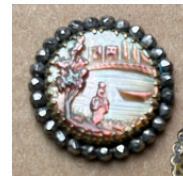
Size: Large  
Bethlehem Pearl - Star  
Carved, Pierced, Swag Shank

Donated by  
Red Rose Button Club

Front



Back



Size: Medium  
Cameo Carved shell set in  
metal. Cut steel border, Marine Scene (lady, boat,  
bridge, sea, body of water)

Donated by  
Alpha & Omega Button Club

Front



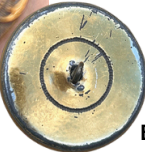
Back



Size: Large  
Amber Glass Stone with  
Amber Pastes in border;  
Faceted Stone

Donated by French Creek  
Valley Button Club

Front



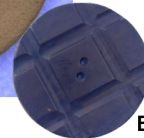
Back



Size: Large  
Studio 2 Hole Sew Thru  
Painted on signed composition  
Artist: Hope Boltz

Donated by French Creek  
Valley Button Club

Front



Back



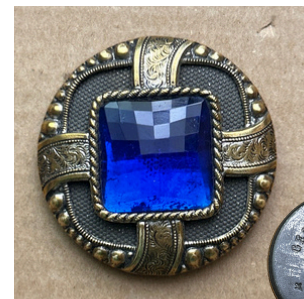
Size: Large  
One of a kind  
Handpainted (wood)  
Artist: Frank Rossi 2017

Donated by  
Star Button Club

Front



Back



Size: Large  
Jewel Button. Faceted,  
Cobalt Blue, Square  
Glass Focal - Backmark

Donated by  
Susquehanna Button Club

Front



Back

## All Buttons sizes marked & enlarged for detail.

A special "Thank you!" to all of the Clubs of the Pennsylvania State Button Society who contributed the buttons in this fabulous collection/giveaway!

Proceeds from this giveaway help to offset the rising costs in venue/hosting of upcoming & future shows.

**Thank you in advance for your support!**

## BONUS!!

This collection will come mounted & framed THANKS TO THE GENEROSITY of Brown's Button Frames