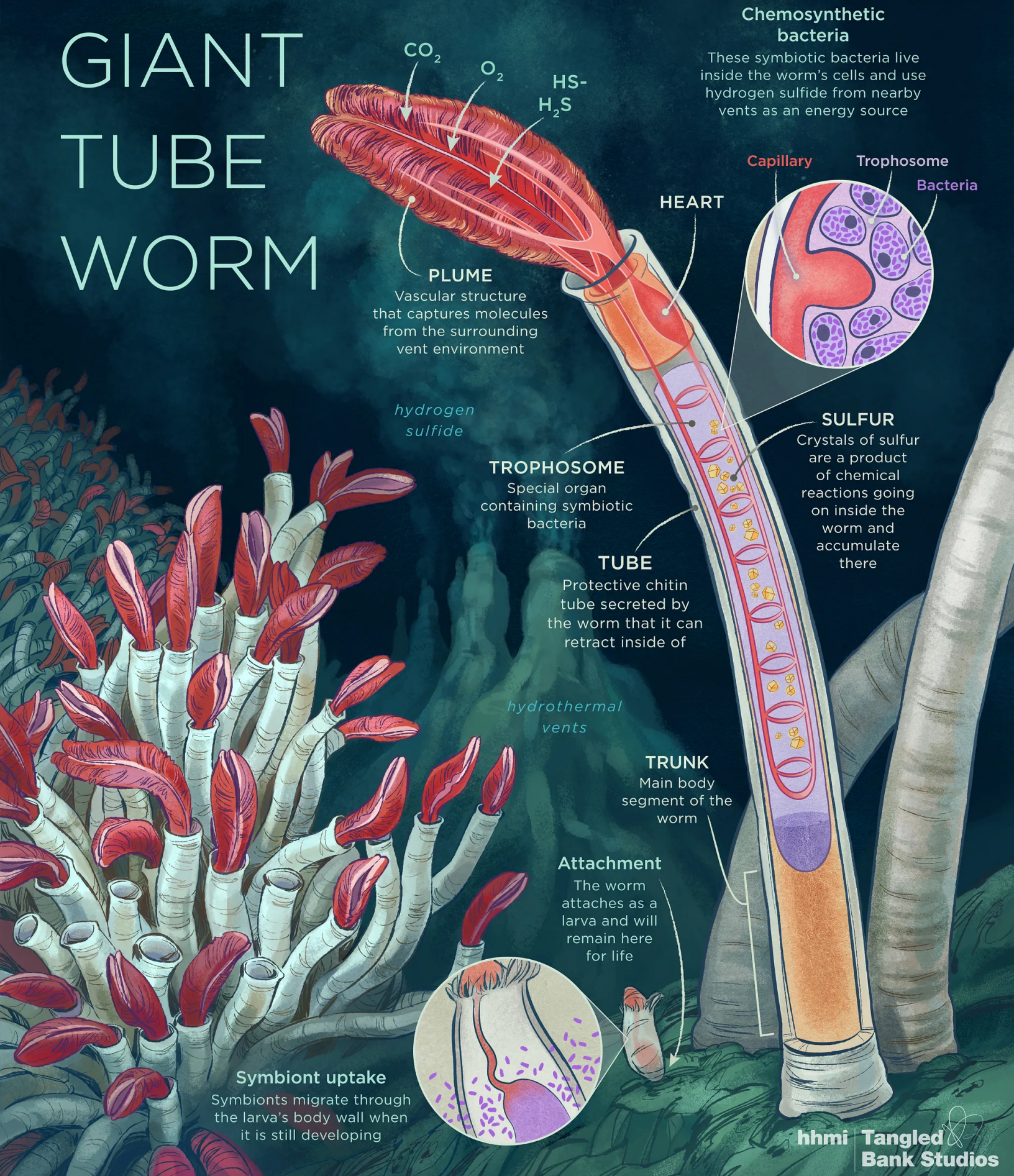
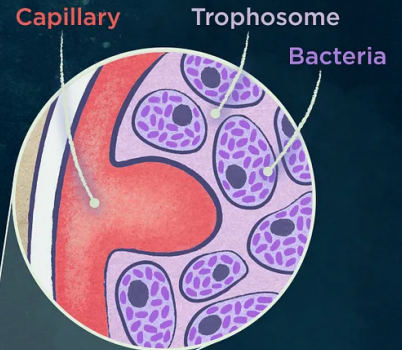


# GIANT TUBE WORM



## Chemosynthetic bacteria

These symbiotic bacteria live inside the worm's cells and use hydrogen sulfide from nearby vents as an energy source



**TROPHOSOME**  
Special organ containing symbiotic bacteria

**TUBE**  
Protective chitin tube secreted by the worm that it can retract inside of

**SULFUR**  
Crystals of sulfur are a product of chemical reactions going on inside the worm and accumulate there

**TRUNK**  
Main body segment of the worm

**Attachment**  
The worm attaches as a larva and will remain here for life

**Symbiont uptake**  
Symbionts migrate through the larva's body wall when it is still developing