



MARK ONE MACHINERY

1485 North Clinton Ave.
Bay Shore, NY
www.markonemachinery.com
www.ccsmachinery.com
New York Office: (631)-968-0900
Massachusetts Office: (978)-304-6851

At Mark One Machinery, our philosophy is to provide superior performance without cutting any corners. We always treat our customers fairly and, because of this, the plastics industry has trusted us for over 30+ years.

We have the largest selection of **used** machinery for the extrusion, bag making, printing, and reprocessing of flexible films in the world, with warehouses and partnered locations across the country.

Mark One Machinery also offers complete lines of **new** machinery from our new/custom machinery division, CCS Machinery Inc.

Our skilled engineers and machinists can completely **rebuild** your winders, presses, bag machines, extrusion lines and more, in addition to building **custom** machinery designed specifically to meet your needs.

YOUR GO-TO MANUFACTURER FOR ALL EXTRUSION & CONVERTING NEEDS!

- AIR RINGS
- BAG MACHINES
- CANTILEVERED WINDERS
- CHILLERS
- COATERS
- COMPLETE BLOWN & CAST LINES
- CORELESS WINDERS
- DIE CARTS
- DIES
- DRYERS
- DUAL TURRET WINDERS
- EXTRUDERS
- FOLDERS
- HOPPERS
- LAMINATORS
- LINE CONTROL SYSTEMS WITH DATA ACQUISITION
- POUCH MACHINES
- PRIMARY NIPS
- PRINTING PRESSES
- RECLAIM LINES
- ROTARY CUTTERS
- SECONDARY NIPS
- SEPARATORS
- SHEET STACKS
- SINGLE TURRET WINDERS
- SLITTERS
- SURFACE WINDERS
- TREATERS
- UNWINDS
- WICKETERS

MARK ONE MACHINERY

COMPLETE REBUILDS

Table of Contents

1. DUAL TURRET WINDERS.....	2
A. GLOUCESTER GEC129 – 104”	2
B. GLOUCESTER GEC129 – 124”	3
C. GLOUCESTER GEC192 – 74”	5
D. GLOUCESTER GEC124 – 104”	7
E. SANO DTW & SECONDARY NIP STATION – 124”	9
F. SANO DTW & SECONDARY NIP STATION – 74”	11
G. SANO DTW – 74”	13
2. BAG MACHINES	15
A. SERVO CONVERTED BAG MACHINE – 70”	15
B. SERVO CONVERTED BAG MACHINE – 80”	17
3. DIES AND OSCILLATOR CARTS	19
4. LINE CONTROL WITH DATA ACQUISITION (EXTROL Replacement)	20
5. PRINTING PRESSES	21
6. EXTRUDERS	23
7. SEPARATORS.....	24
8. FOLDERS.....	26

1. DUAL TURRET WINDERS

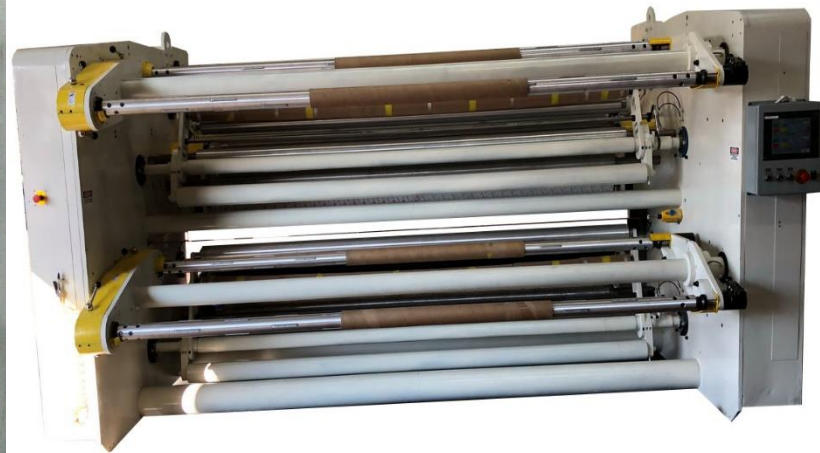
A. GLOUCESTER GEC129 – 104”

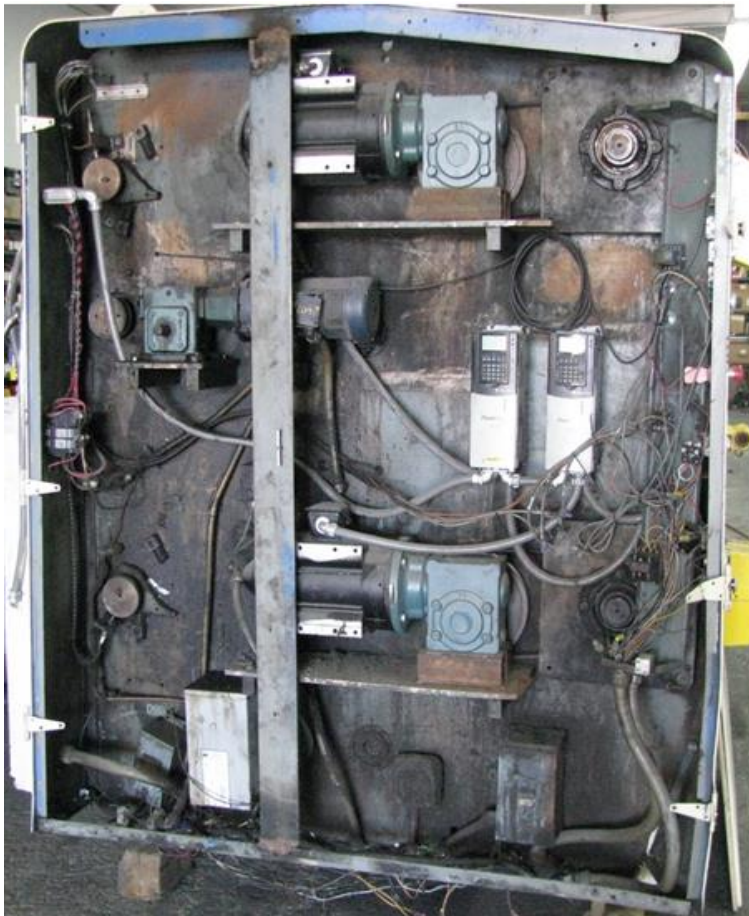
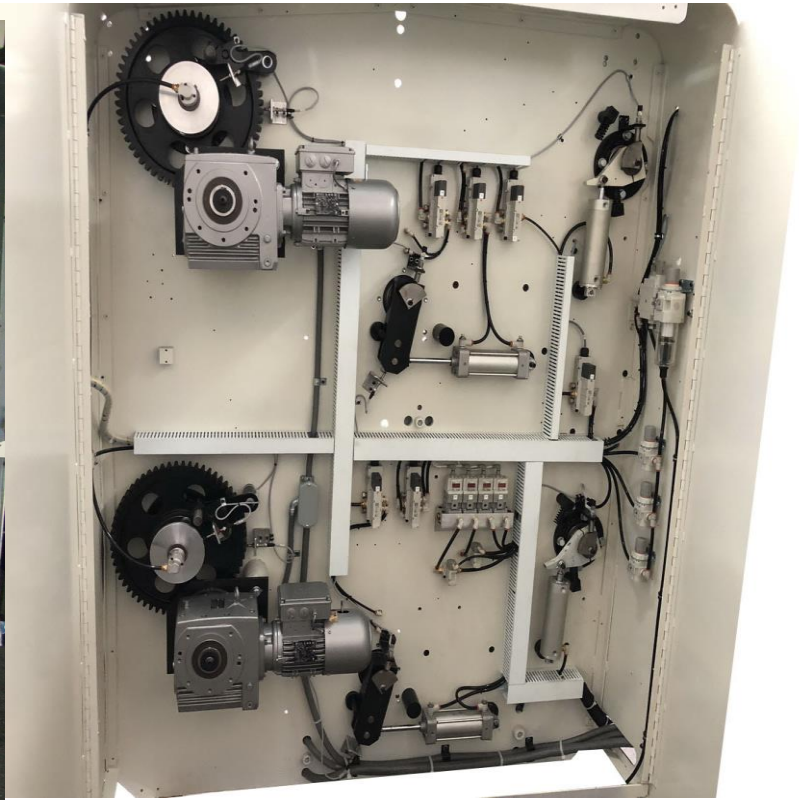
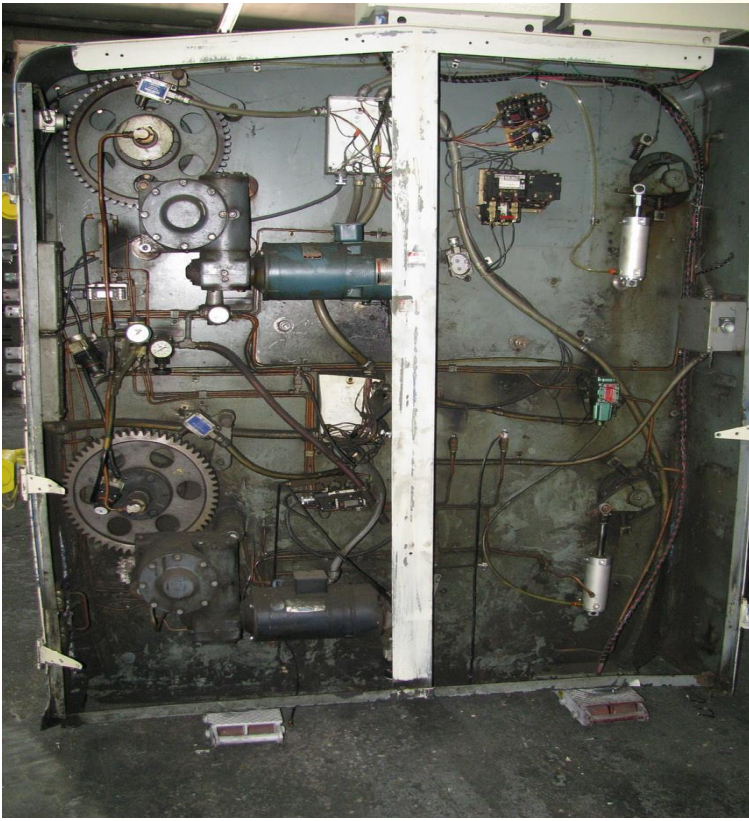
- This original 64” machine was spread out to 104” to allow our customer to broaden their product capacity for their line.
- The winder was equipped with flying-knife auto-cut capabilities for both turrets, a winder edge guide, all new digital controls with self-diagnostics, as well as the latest safety features. The new HMI features include the HMI manual being accessible from the HMI, Spanish and English HMI controls, a Spare Parts List on the HMI, Self-Troubleshooting system with HMI alerts, a “Common Q&A” guide on the HMI, Recipes Storage Screen on the HMI for machine settings, and remote PLC/HMI access for remote troubleshooting.



B. GLOUCESTER GEC129 – 124”

- A complete rebuild with new motors, idlers, bearings, pneumatics and now being completely digitally controlled with new safety features.
- The new HMI features include the HMI manual being accessible from the HMI, Spanish and English HMI controls, a Spare Parts List on the HMI, Self-Troubleshooting system with HMI alerts, a “Common Q&A” guide on the HMI, Recipes Storage Screen on the HMI for machine settings, and remote PLC/HMI access for remote troubleshooting.

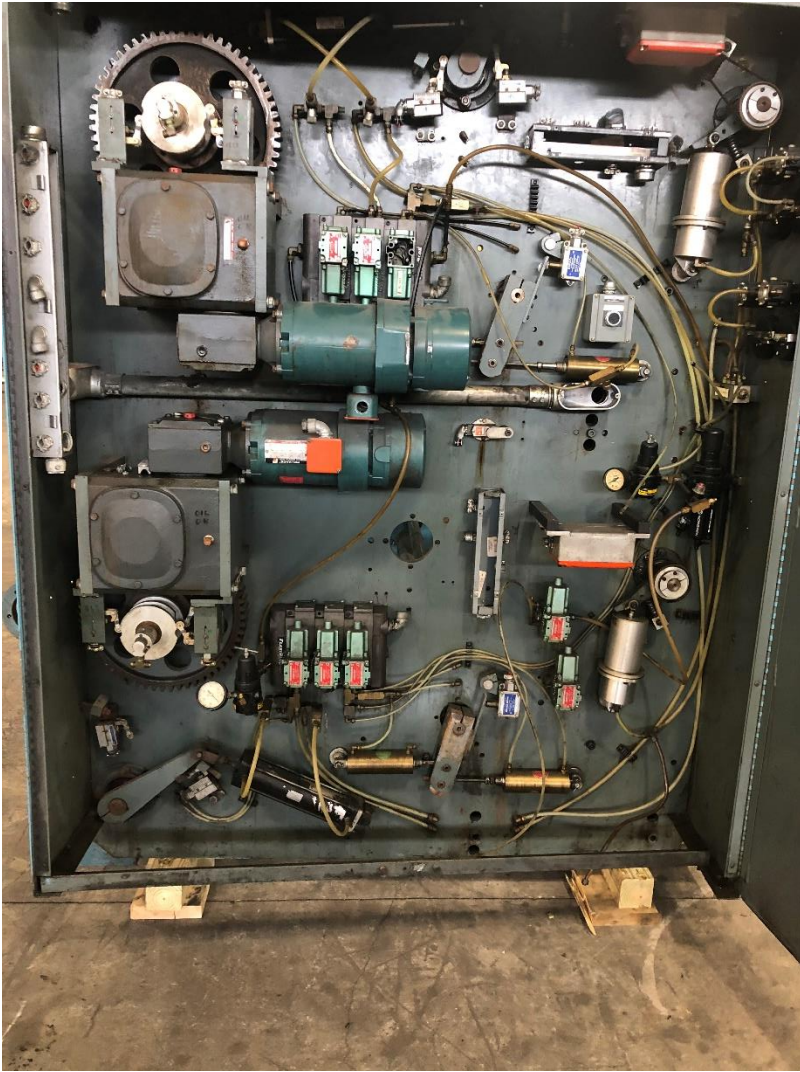




C. GLOUCESTER GEC192 – 74”

- We not only completely rebuilt this 74" Gloucester 192 Winder, but constructed new turret assemblies to now accommodate 30" OD rolls! (Previously only allowed 24" OD rolls)
- Along with fabricating removable center support shafts to prevent shaft deflection when slitting, conversion of auto-cut assemblies to flying-knife, and being completely digitally controlled with new safety features, this winder is ready to go back into action!
- The new HMI features include the HMI manual being accessible from the HMI, Spanish and English HMI controls, a Spare Parts List on the HMI, Self-Troubleshooting system with HMI alerts, a “Common Q&A” guide on the HMI, Recipes Storage Screen on the HMI for machine settings, and remote PLC/HMI access for remote troubleshooting.

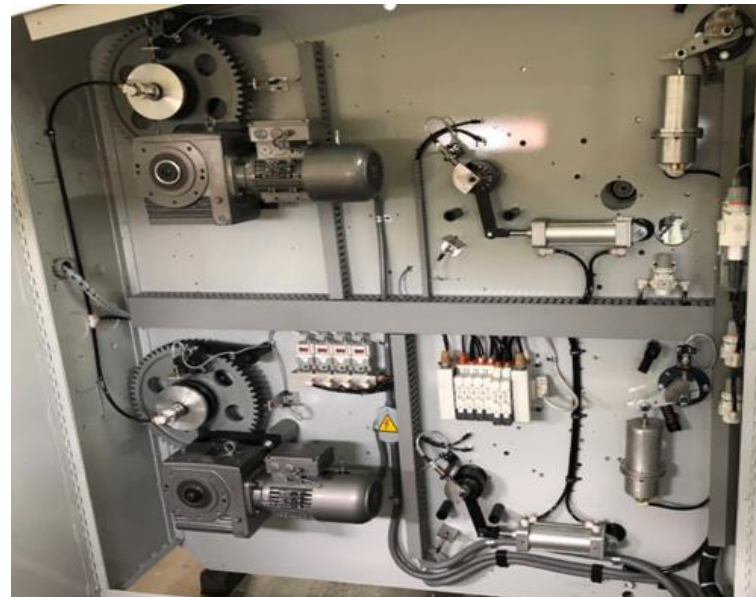




D. GLOUCESTER GEC124 – 104”

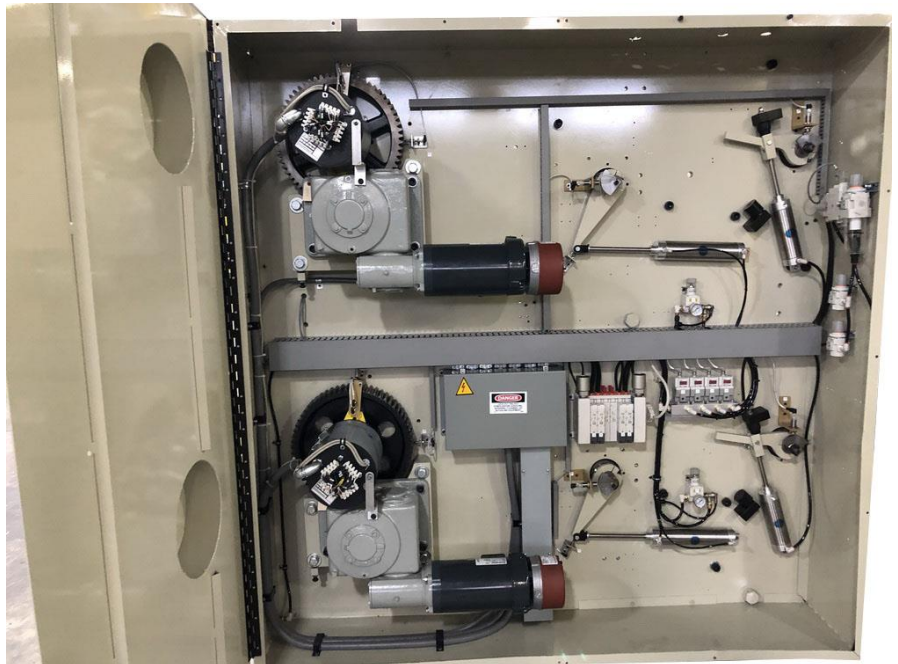
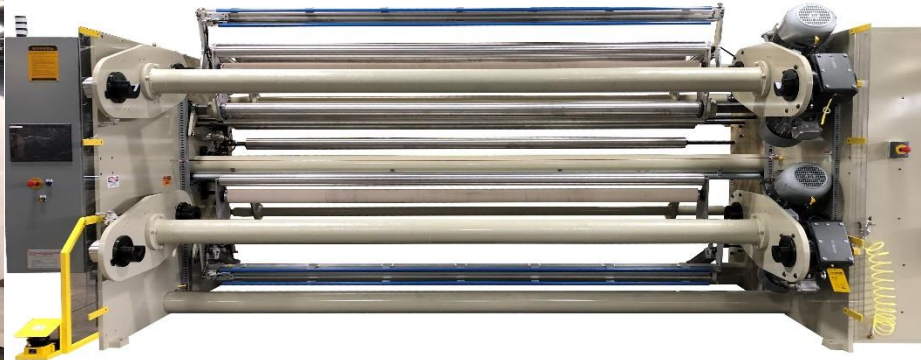
- A complete rebuild with new motors, idlers, bearings, pneumatics and now being completely digitally controlled with new safety features.
- The new HMI features include the HMI manual being accessible from the HMI, Spanish and English HMI controls, a Spare Parts List on the HMI, Self-Troubleshooting system with HMI alerts, a “Common Q&A” guide on the HMI, Recipes Storage Screen on the HMI for machine settings, and remote PLC/HMI access for remote troubleshooting.





E. SANO DTW & SECONDARY NIP STATION – 124”

- OSHA shut down one of our customers’ line due to too many accidents on this 124” SANO winder and Secondary Nip station.
- A complete rebuild was done to get them back up and running. All digitally controlled, upgraded auto-cut systems, greater product range capabilities, and of course state-of-the-art safety features!
- The new HMI features include the HMI manual being accessible from the HMI, Spanish and English HMI controls, a Spare Parts List on the HMI, Self-Troubleshooting system with HMI alerts, a “Common Q&A” guide on the HMI, Recipes Storage Screen on the HMI for machine settings, and remote PLC/HMI access for remote troubleshooting.

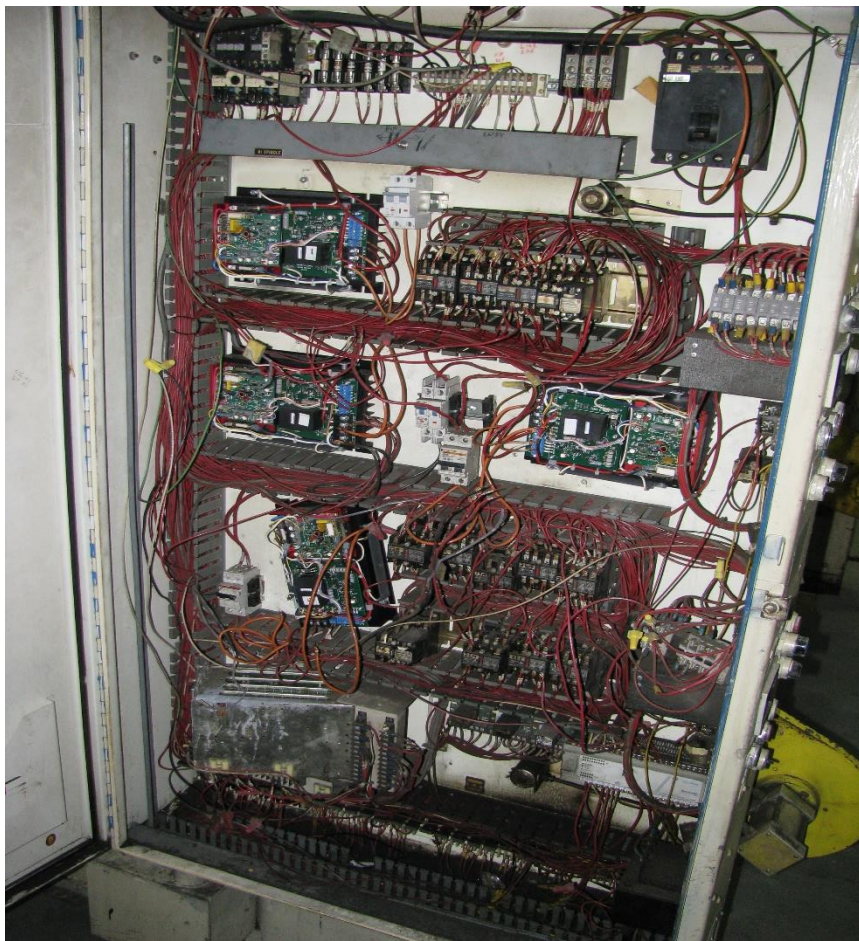




F. SANO DTW & SECONDARY NIP STATION – 74”

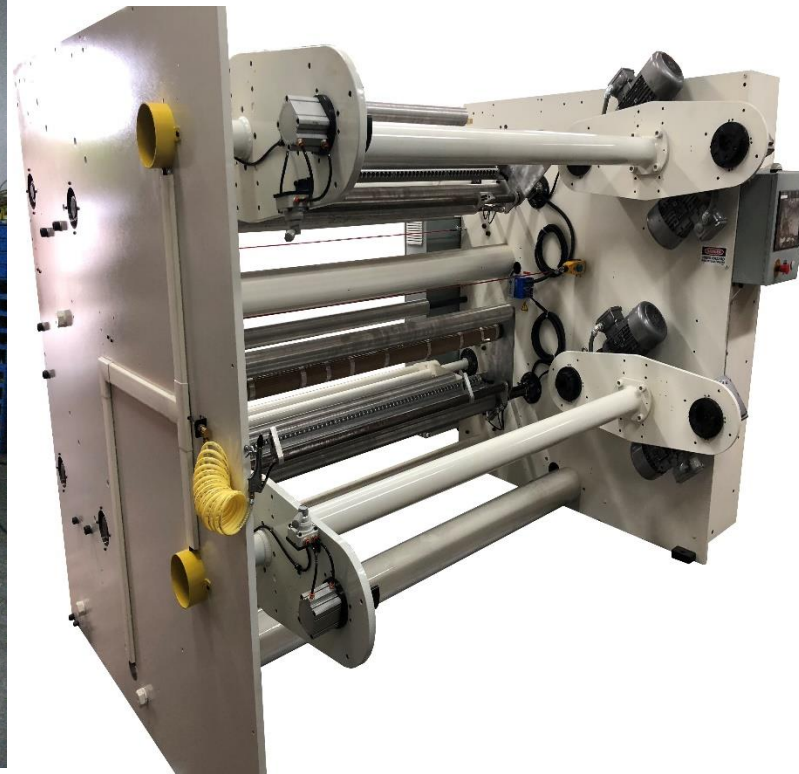
- A complete rebuild with new motors, idlers, bearings, pneumatics and now being completely digitally controlled with new safety features.
- The new HMI features include the HMI manual being accessible from the HMI, Spanish and English HMI controls, a Spare Parts List on the HMI, Self-Troubleshooting system with HMI alerts, a “Common Q&A” guide on the HMI, Recipes Storage Screen on the HMI for machine settings, and remote PLC/HMI access for remote troubleshooting.

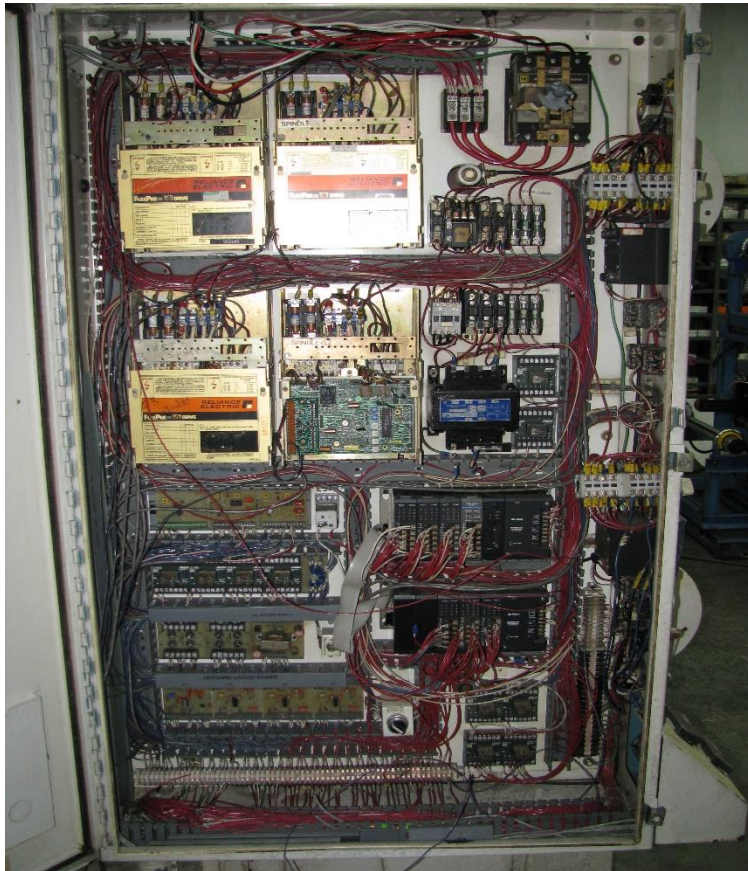




G. SANO DTW – 74”

- A complete rebuild with new motors, idlers, bearings, pneumatics and now being completely digitally controlled with new safety features.
- The new HMI features include the HMI manual being accessible from the HMI, Spanish and English HMI controls, a Spare Parts List on the HMI, Self-Troubleshooting system with HMI alerts, a “Common Q&A” guide on the HMI, Recipes Storage Screen on the HMI for machine settings, and remote PLC/HMI access for remote troubleshooting.





2. BAG MACHINES

A. SERVO CONVERTED BAG MACHINE – 70”

- This Hydraulic bag machine was converted to a servo and pneumatic controlled system.
- Our servo converted bag machines put an ease on maintenance and production teams with easier maintenance, cheaper replacement parts, and less down time.
- Optional guard is equipped, along with all new digital controls with self-diagnostics, as well as the latest safety features.
- The new HMI features include the HMI manual being accessible from the HMI, Spanish and English HMI controls, a Spare Parts List on the HMI, Self-Troubleshooting system with HMI alerts, a “Common Q&A” guide on the HMI, and a Recipes Storage Screen on the HMI for machine settings.





B. SERVO CONVERTED BAG MACHINE – 80”

- This Hydraulic bag machine was converted to a servo and pneumatic controlled system.
- Our servo converted bag machines put an ease on maintenance and production teams with easier maintenance, cheaper replacement parts, and less down time.
- Optional guard is equipped, along with all new digital controls with self-diagnostics, as well as the latest safety features.
- The new HMI features include the HMI manual being accessible from the HMI, Spanish and English HMI controls, a Spare Parts List on the HMI, Self-Troubleshooting system with HMI alerts, a “Common Q&A” guide on the HMI, and a Recipes Storage Screen on the HMI for machine settings.





3. DIES AND OSCILLATOR CARTS

- Complete disassemble and rebuild of a Gloucester 20" die and Sano oscillator cart .
- Supplied new heaters, thermocouples, and other hardware.
- Provided new controls.
- Fabricated new adapter module.



4. LINE CONTROL WITH DATA ACQUISITION (EXTROL Replacement)

- Co-Extrusion line with 3 extruders, adapters, dryers, and die for a total of 56 zones.
- Extrol system replacement.
- Heat/Cool controls and setpoints, extruder speeds, extruder speed and load feedback, melt pressures, and start/stop controls all handled through a user-friendly HMI.
- All user settings are able to be stored as Recipes on the HMI for quick line setups for repeat jobs.
- SCADA (data acquisition) system included on a PC.
- SCADA system capable of recording history of all settings, parameter changes and feedbacks, which are time/date stamped for the previous 30 days.
- The SCADA system can plot trends/graphs of all system setpoints and feedbacks for the previous 30 days.
- Reports of setpoints and feedback of parameters can be printed and/or saved as a PDF at the end of each shift and after each roll change.



5. PRINTING PRESSES

- Wolverine 2-color printing press, 51" wide.
- Fabricated a new base frame, retaped all lead screw holes, chase lead screw threads and replace lead screws as needed.
- Rebuilt hydraulic plate lift cylinders, repaired impression roll and anilox roll, recovered rubber ink rolls, mounted a rubber covered infeed nip that opens and closes pneumatically.
- Supplied a pneumatic dancer controlled by a precision regulator. Speed control is via proximity switch and cam.
- Replaced any worn gears, replaced all high speed bearings, all new pneumatic and electronics.





6. EXTRUDERS

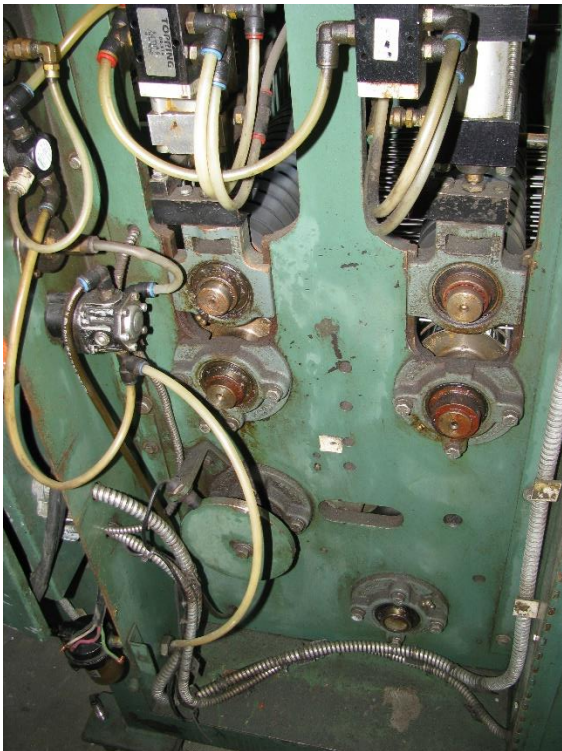
- Replaced all heaters, fans, main motor, drive coupling, oil, and wiring.
- Pushed and cleaned screw, cleaned extruder barrel.
- Fabricated new guards.
- Provided new heat/line control cabinet (10-zones plus extruder, air-ring blower, and primary nip controls) with discrete controls.



7. SEPARATORS

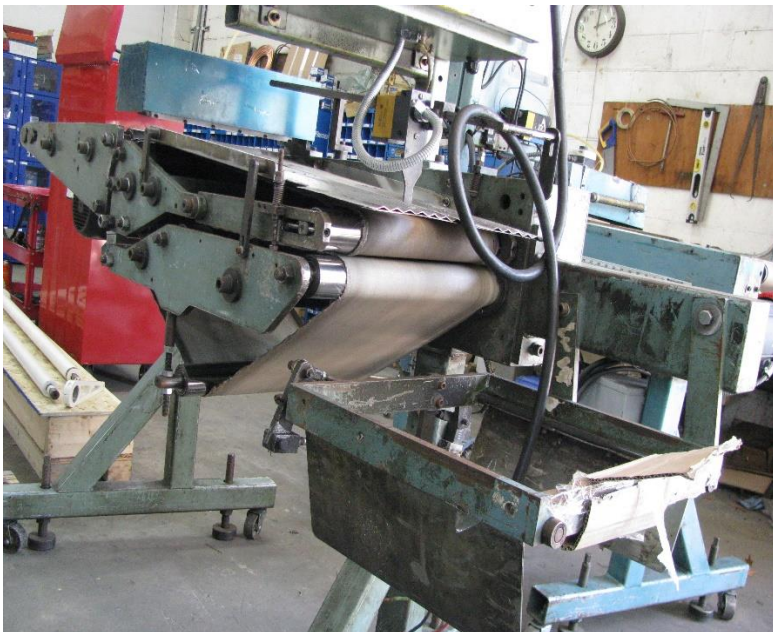
- Replaced the main drives and provided new controls.
- Replaced manual pneumatic valves with solenoid valves.
- Installed a new front guard.





8. FOLDERS

- Replaced gears, pulleys, solenoid valves, and belts.
- Replaced the main drive
- Installed guards and safety switches.





COVERING MORE OF YOUR EXTRUSION & CONVERTING NEEDS WITH
COMPANIES AND PRODUCTS WE REPRESENT:

**WE ARE THE U.S. SUPPLIER OF SCAPA INDUSTRIES, A GLOBAL
MANUFACTURER OF TAPES FOR YOUR PRINTING PLATES !!!**

SIDEWELD INDUSTRIES

Leading supplier of accessories and parts for the bag making & converting industry worldwide.



CCS MACHINERY, INC

The industry leader for new and custom designed blown and sheet line equipment.



PLASTIC PACKAGING AUTOMATION, LLC

Manufacturer of new bottom seal bag machines & separators.



UTEKO

For all your printing, laminating, and coating needs.



GUR-IS

Fast and optimal solutions for the plastic & paper bag making business.



MARTIGNONI

Corona treaters, web cleaners, and antistatic systems.





MARK ONE

MACHINERY

SERVING THE PLASTIC INDUSTRY WORLDWIDE



MARK ONE

MACHINERY

CONTACT US:

1485 North Clinton Ave.

Bay Shore, NY

www.markonemachinery.com

www.ccsmachinery.com

New York Office: (631)-968-0900

Massachusetts Office: (978)-304-6851