

# COMING SOON:

## HYTEC A900 PREMIUM™ LOCK H899 OPTIMUM™



## Hydroment® Grouts in 10lb Bags: Vivid™, Ceramic Tile Grout™, & Dry Tile Grout™

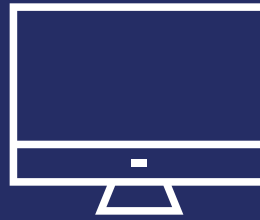


### Let's get social!



Step 1: **SIGN UP ONLINE**

Visit: [www.awardlink.com/Bostik](http://www.awardlink.com/Bostik)



Step 2: **SAVE UP POINTS**

Earn points on qualified purchases



Step 3: **GET COOL STUFF**

Redeem your points and choose from  
thousands of name brand items



## JOIN NOW!

[www.awardlink.com/bostik](http://www.awardlink.com/bostik)



**Promotion Details:** To participate in the promotion, one must be enrolled in the Pro Rewards Program and upload valid invoices. Purchase must be invoiced during the promotional period. Promotion cannot be combined with other products, discounts, or coupons. Points multipliers apply only to the qualifying products purchased from 10/1/25-12/31/25. Invoices for qualifying products must be submitted through the Bostik Pro Rewards™ Contractor Loyalty Program site by 1/31/26 to receive multiplier points. For more information, visit <https://bostikus.cc/prorewards>

For more information, contact us at:  
1-800-726-7845 | [www.bostik.com/us](http://www.bostik.com/us)

B345600\_09.29.25



## Q4 Product Multiplier PROMO

## Pro Rewards

### Contractor Loyalty Program



Adhesive solutions by **ARKEMA**

## Tiling



Tiling				
Dimension® with EzClean	9 lbs	200	2X	400
	18 lbs	400	2X	800
TruColor® with EzClean	9 lbs	150	2X	300
	18 lbs	300	2X	600
Big Tile & Stone (grey or white)	50 lbs	100	2X	200
Bostik PM (grey or white)	50 lbs	100	2X	200

## Hardwood Adhesives



Hardwood Adhesives				
Pro-MSP™	4 gal	300	2X	600
	20 oz sausage	20	2X	40

## Surface Prep



Surface Prep				
Roll-Cote™	4 gal	700	2X	1400
	1 gal	150	2X	300
Universal Primer™ Pro	5 gal	300	2X	600
	1 gal	50	2X	100
RENO C200 PRO	25 lbs	50	2X	100

## Resilient Flooring



Resilient Flooring				
LOCK A299 PSA™	4 gal	300	2X	600
	1 gal	80	2X	160
LOCK A799 Transitional™	4 gal	300	2X	600
	1 gal	80	2X	160

## Sealants



Sealants				
HYBRI-SIL®	9.5 oz cartridge	15	2X	30
915™	10.1 oz cartridge	10	3X	30
	20 oz sausage	20	2X	40

