

TYPE YS-A



HYLINK™ Aluminum Splices

UL Listed 90° C, Up to 35 kV ◆

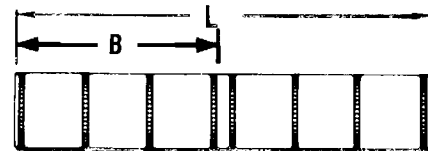
Type YS-A is a high conductivity aluminum tin-plated compression butt splice for use on all combinations of aluminum to aluminum, aluminum to copper, and copper to copper conductor combinations.

They are designed to accommodate conductors from #12 stranded through 1000 kcmil in standard and heavy duty applications. Prefilled with PENETROX™ oxide inhibiting compounds and assembled with color-coded end caps, these connectors provide a permanent trouble-free electrical splice with flexibility and low installed cost.



Features & Benefits

- Aluminum splices are dual rated to accommodate both copper and aluminum wire and are indicated with AL-CU on the connector:
 - AL9CU indicates the terminal can accommodate aluminum and copper wire and is UL Listed 90°C, up to 35kV
 - AL7CU indicates the terminal can accommodate aluminum and copper wire and is UL Listed 75°C, up to 35kV
- Barrel is designed with an internal chamfer at the wire entry to ensure smooth insertion of the wire, preventing possible damaging of the wire strands during insertion
- Electro-tin plated unless otherwise specified to reduce galvanic corrosion (bimetallic) and resist corrosive elements
- Connectors are clearly marked with wire size, die index, color code, and crimp location bands
- Factory pre-filled with PENETROX™ Type A13 oxide inhibitor
- Color coded end caps are factory inserted in the barrels to match the die color code and prevent foreign materials from entering the barrel
- Aluminum oxidation is not easily detected but causes resistance in a connection; it is imperative the proper preparation takes place prior to making an aluminum-to-aluminum connection
- BURNDY certifies its products using the BURNDY Engineered System and select other crimp tool manufacturers in accordance with one or more of the UL categories in order to obtain a UL Listing
- Conductor Accommodate Types:
 - Aluminum Code Wire: Class B (Concentric, Compressed, Compact)
 - Copper Code Wire: Class B (Concentric, Compressed, Compact or Class C)
 - Copper Clad Aluminum: Noted in the conductor accommodates as CCA



Accessories

- Hardware - Section F
- PENETROX™ Oxide Inhibitor - Section F
- Heat and Cold Shrink Tubing - Section D
- WIREMIKE™ Wire Micrometer - Section F
- Wire Management (Cable Ties) - Section G

TYPE YS-A (Continued)



Catalog Number	Code • Conductor	Dimensions		Installation Tooling ▲					Wire Strip Length		
				Dieless (# of crimps/end)		35 ■, 750, 46* Series		Die Index & Embossment			
		B	L	Mechanical	Hydraulic	Die Number (# of crimps per end)	Color Code				
YS12AG1	#12 Str.	0.45	1.03	Ratchet: MR827 (1)	—	—	— ①	—	5/8		
YS10WAG1	#10 Sol.	0.50	1.12								
YS8CA1	8 Str.	0.59	1.44	MY293 (1) MRC840AL (1)	644 Series (1) 81K Series (1)	U8CABT (1)	Blue	374	5/8		
YS6CA1	6 Str.	0.72	1.70			U6CABT (1)	Gray	346	3/4		
YS4CA1	4 Str.	0.86	1.97			U4CABT (1)	Green	375	7/8		
YS2CA1	2 Str.	1.09	2.44	MY293 (1) MRC840AL (2)	644 Series (1) 81K Series (2)	U2CABT (1)	Pink	348	1-1/8		
YS1CA1	1 Str.	0.90	2.05			U1CART (1)	Gold	471	15/16		
YS25A1	1/0 Str.	1.06	2.37	MY293 (2) MRC840AL (3)	644 Series (1) 81K Series (2)	U25ART (1)	Tan	296	1-1/16		
YS26A1	2/0 str.	1.18	2.61			U26ART (2)	Olive	297	1-3/8		
YS27A1	3/0 str.	1.31	2.88			U27ART (2)	Ruby	467	1-1/2		
YS28A1	4/0 str.	1.40	3.06			U28ART (2)	White	298	1-5/8		
YS29A1	250kcmil	1.46	3.18			U29ART (2)	Red	324	1-5/8		
YS30A1	300 kcmil	1.47	3.20			U30ART (2)	Blue	470	1-3/4		
YS31A1	350 kcmil	1.89	4.04			—	644 Series (1) 81K Series (2)	U31ART (2)	Brown	299	2-1/8
YS32A1	400kcmil	2.30	4.86			—	644 Series (1) 81K Series (4)	U32ART (2)	Green	472	2-1/2
YS34A1	500 kcmil	2.38	5.02					U34ART (2)	Pink	300	2-5/8
YS36A1	600 kcmil	2.44	5.14					U36ART (4)	Black	473	2-7/8
YS39A1	700 kcmil 750 kcmil +900 Compact Al	2.50	5.26	U39ART2 (4)	Yellow			936	2-7/8		
YS39AM1	700 kcmil 750 kcmil +900 Compact Al	2.63	5.58	P39ART** (4)	Red			301	2-7/8		
YS42A1	600 - 900 kcmil	2.50	5.26	—	644 Series (2)			U42ART (4)	Gray	303	2-7/8
YS44A1	1000 kcmil	2.84	5.94					P44ART** (4)	Brown	302	3
YS45A1^^	1250 kcmil	2.84	6.21					P48PR1/ L44ART** (6)	Brown	302	2-7/8
YS46A1^^	1500 kcmil	3.40	7.05					L46ART*** (2)	Blue	478	3-7/8
YS47A1^^	1750 kcmil	3.99	8.31					L47ART*** (2)	White	587	4
YS48A1^^	2000 kcmil	3.66	7.58			L48ART*** (2)	Red	479	3-5/8		
YS483A1^^	2250 kcmil ALUMINUM ONLY	3.66	7.58			—	644 Series (2)	L48ART*** (2)	Red	479	3-5/8

▲ See tooling section of this catalog for complete tool and die listing.

① No color code assigned.

‡ UL Listed for Aluminum only. Not CSA Certified.

+ Tested with Y644HSXT and PAT644XT-18V dieless tools only and not UL Listed with any tool on 900 Compact Al.

* Use PUADP1 adaptor with U dies in 46 Series.

■ The largest size for the 35 Series is 400 kcmil.

◆ For applications greater than 2000 Volts consult cable manufacturer for voltage stress relief instructions.

● Also accommodates compressed and compact conductors (except for 700 kcmil in 750 kcmil barrel).

^^ 75°C Rated

**P-RT dies for use in 46 Series tools only.

***L dies for use with 60 Ton HYPRESS™ only

Note: All dimensions shown are for reference only.

Compression Connections

Aluminum / Copper Compression
HYREDUCER™ Aluminum Reducing Splices

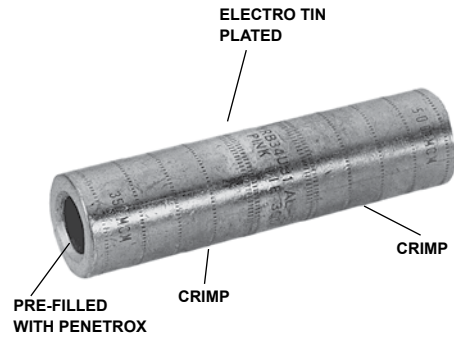
TYPE YRB

HYREDUCER™ Aluminum Reducing Splice



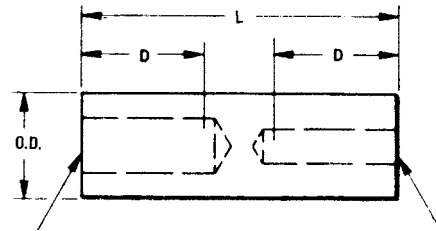
UL Listed 90° C, Up to 35 kV ♦

HYREDUCER™ Type YRB reducer butt splices are designed to splice two different conductor sizes and is UL Listed for aluminum to copper and aluminum to aluminum applications. The outside diameter is held constant to minimize installation dies and is factory pre-filled with PENETROX™ oxide inhibitor.



Features & Benefits

- Aluminum splice reducers are dual rated to accommodate both copper and aluminum wire and are indicated with AL-CU on the connector:
 - AL9CU indicates the terminal can accommodate aluminum and copper wire and is UL Listed 90°C, up to 35kV
 - AL7CU indicates the terminal can accommodate aluminum and copper wire and is UL Listed 75°C, up to 35kV
- Barrel features an internal chamfer at the wire entry to ensure smooth insertion of the wire, preventing possible damaging of the wire strands during insertion
- Electro-tin plated unless otherwise specified to reduce galvanic corrosion (bimetallic) and resist corrosive elements
- Connectors are clearly marked with crimp location bands
- Factory pre-filled with PENETROX™ Type A13 oxide inhibitor
- Color coded end caps are factory inserted in the barrels to match the die color code and prevent foreign materials from entering the barrel
- The barrels are designed to accommodate larger run conductor and smaller tap conductor so the inside diameters on each end of the barrel are different but the outside diameter is held constant minimizing number of installation dies necessary



- Aluminum oxidation is not easily detected but causes resistance in a connection; it is imperative the proper preparation takes place prior to making an aluminum-to-aluminum connection
- BURNDY certifies its products using the BURNDY Engineered System and select other crimp tool manufacturers in accordance with one or more of the UL categories in order to obtain a UL Listing

Catalog Number	Conductor Range • Aluminum or Copper Size †		Dimensions			Installation Tooling ▲ Hydraulic Tools, Die Sets (No. of Crimps ‡)				Wire Strip Length
	Barrel A	Barrel B	O.D.	D	L	35 ■, 750, 46* Series	‡	Die Index	Color Code	
YRB2U4	1 str. 2 str.	4 str. 3 str.	0.65	0.88	2.00	U25ART	1	296	Tan	15/16
YRB25U2	1/0 str.	1 str. 2 str.	0.65	0.88	2.00	U25ART	1	296	Tan	15/16
YRB27U25	3/0 str.	1/0 str.	0.85	1.36	3.31	U28ART	2	298	White	1-7/16
YRB27U26	3/0 str.	2/0 str.	0.85	1.36	3.31	U28ART	2	298	White	1-7/16
YRB28U26	4/0 str.	2/0 str.	0.85	1.36	3.31	U28ART	2	298	White	1-7/16
YRB29U28	250 kcmil	4/0 str.	1.11	1.73	4.21	U31ART	2	299	Brown	1-13/16
YRB31U28	350 kcmil	4/0 str.	1.11	1.73	4.21	U31ART	2	299	Brown	1-13/16
YRB31U29	350 kcmil	250 kcmil	1.11	1.73	4.21	U31ART	2	299	Brown	1-13/16
YRB34U31	500 kcmil	350 kcmil	1.31	2.11	5.12	U34ART	4	300	Pink	2-3/16
YRB36U31	600 kcmil	350 kcmil	1.46	2.25	5.57	U39ART2	4	936	Yellow	2-5/16
YRB36U34	600 kcmil	500 kcmil	1.46	2.25	5.57	U39ART2	4	936	Yellow	2-5/16
YRB39U34	700/750 kcmil • 900 Compact AL ▼	500 kcmil	1.46	2.25	5.57	U39ART2	4	936	Yellow	2-5/16
YRB39U36	700/750 kcmil • 900 Compact AL ▼	600 kcmil	1.46	2.25	5.57	U39ART2	4	936	Yellow	2-5/16

† Contact BURNDY for conductor sizes not shown

▲ See tooling section of this catalog for complete tool and die listing

‡ Number of crimps

* Use PUADP1 adaptor with U dies in 46 Series

■ The largest size for the 35 Series is 400 kcmil

♦ For applications greater than 2000 Volts consult cable manufacturer for voltage stress relief instructions

• Also accommodates compressed and compact conductors (except for 700 kcmil in 750 kcmil barrel)

▼ Tested with Y644HSXT and PAT644XT-18V dieless tools only and not UL Listed with any tool on 900 Compact Al.

Note: All dimensions shown are for reference only.

TYPES YFD, YFN, YFO, YFR

H-CRIMPIT™ Aluminum Compression Tap Connector



UL Listed 90° C, Up to 35 kV ♦

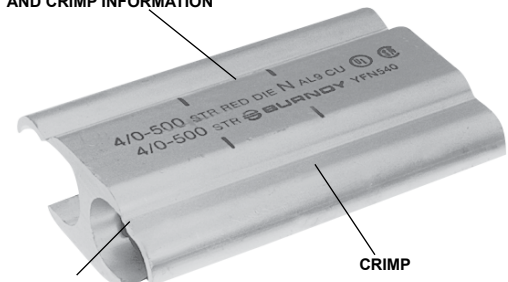
H-CRIMPIT™ compression tap connectors Types YFD, YFN, YFO, and YFR are for use with aluminum to aluminum and aluminum to copper connections.

The H-CRIMPIT™ taps are ideal for making both parallel and tap compression connections in risers and gutters. It should only be installed with hydraulic tools.

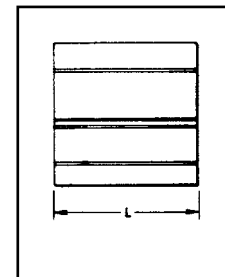
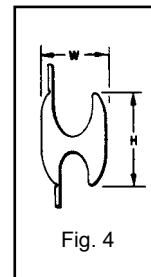
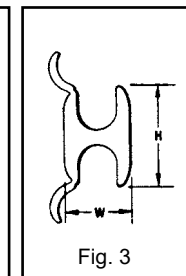
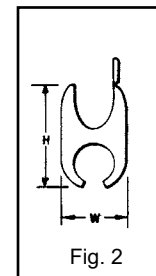
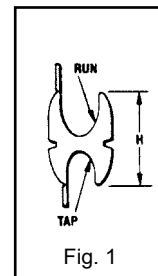
Features & Benefits

- Aluminum H Taps are dual rated to accommodate both copper and aluminum wire and are indicated with AL-CU on the connector:
 - AL9CU indicates the terminal can accommodate aluminum and copper wire and is UL Listed 90°C, up to 35kV
 - AL7CU indicates the terminal can accommodate aluminum and copper wire and is UL Listed 75°C, up to 35kV
- Each connector is factory sealed in polyethylene to ensure connector is delivered free of foreign materials prior to being installed
- Post crimp, the connector is easy to tape
- Connectors are clearly marked
- Factory pre-filled with PENETROX™ Type A13 oxide inhibitor
- Aluminum oxidation is not easily detected but causes resistance in a connection so it is imperative that the proper preparation takes place prior to making an aluminum-to-aluminum connection
- BURNDY certifies its products using the BURNDY Engineered System and select other crimp tool manufacturers in accordance with one or more of the UL categories in order to obtain a UL Listing

DIE AND COLOR CODE
AND CRIMP INFORMATION



PRE-FILLED WITH
PENETROX



Accommodates ②						Catalog Number	Fig. #	H	L	W	Installation Tooling ▲					Wire Strip Length
Copper or Aluminum		Compact ④		Dia. Range							Die Index	Color Code	Hydraulic Tools, Die Sets (No. of Crimps)			
Run	Tap	Run	Tap	Run	Tap								750, 35 Series	46 ⑤ Series	()	
1/0-6 Str	1-6 Str	2/0-6	1-6 Str	.398-.162	.332-.162	YFO140	1	1.15	1.62	0.70	O	Green	UYFO, UO	UYFO, UO	(2)	1-7/8
4/0-1 Str	2/0-1 Str	250-1/0	3/0-1/0	.563-.338	.477-.338	YFD365	1	1.42	2.50	0.89	D3	Blue	UD3 UYFD	UD3 UYFD	(3)	2-3/4
500-4/0	500-4/0	500-250	500-250	.815-.522	.815-.522	YFN540	3	1.82	4.50	1.23	N	Red	UN UYFN	PN PYFN	(3)	4-7/8
900-600	600-350	900-700	600-400	1.108-.877	.893-.659	YFR865	4	3.04	4.62	1.74	KR	Yellow	—	PKR PYFR	(4)	5

▲ See tooling section of this catalog for complete tool and die listings.

♦ For applications greater than 2000 Volts consult cable manufacturer for voltage stress relief instructions.

* CSA Listed

Note: All dimensions shown are for reference only.

① Material: Aluminum.

② For Conductor combinations of AL to AL or AL to CU.

③ Catalog Number PUADP1 adaptor is required to use U type dies in 46 series tools; **do not use UYFN die set with PUADP1; use PYFN only.**

④ Other conductors not listed in table can be accommodated as long as the conductor diameter falls within diameter range specified.

TYPE YAEBAS

Straight Style Battery Post Terminals

#6 - 4/0 AWG Solid and Stranded Copper

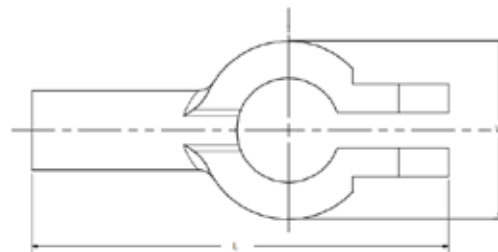
BURNDY straight style battery post terminals are made from pure copper alloy and tin plated to prevent corrosion. They adhere to SAE, JIS, and DIN stud standards. Typical applications are automotive, marine, transportation, petrochemical, and OEM markets.



Features & Benefits

Barrel:

- Color coded for easy identification
- Chamfered end
- Made of copper alloy, tin plated for corrosion resistance and RoHS compliance
- Supplied standard with stainless steel hardware installed



Post:

- Clamp color coded by polarity; red is positive, black is negative
- Not UL Listed but tested and met UL486A-486B pullout requirements

Catalog Number	Wire Range	Dimensions		Bulk Catalog Number	Conn. Color Code	Installation Tooling			Color Code Die	Die Index	Strip Length
		L	W			MD6, MD734R, 500, 600 Series	35, 750 Series	Dieless (# Crimps)			
YAEBAS6CNTN	#6	2.30"	0.98"	YAEBAS6CNTNOEM	Blue	W5CVT (1)	U5CRT (1)	81K Series (1) 4PC Series (1) 644 Series (1) MY2911 (1) MRC840 (1)	Blue	7	1-3/32"
YAEBAS6CPTN			1.02"	YAEBAS6CPTNOEM		W5CRT (1)					
YAEBAS4CNTN	#4		0.98"	YAEBAS4CNTNOEM	Gray	W4CVT (1)	U4CRT (1)		Gray	6	
YAEBAS4CPTN			1.02"	YAEBAS4CPTNOEM		W4CRT (1)					
YAEBAS2CNTN	#2		0.98"	YAEBAS2CNTNOEM	Green	W2CVT (1)	U2CRT (1)		Brown	10	
YAEBAS2CPTN			1.02"	YAEBAS2CPTNOEM		W2CRT (1)					
YAEBAS1CNTN	#1		0.98"	YAEBAS1CNTNOEM	Pink	W1CVT (1)	U1CRT (1)		Green	11	
YAEBAS1CPTN			1.02"	YAEBAS1CPTNOEM		W1CRT1 (1)					
YAEBAS25NTN	1/0	0.98"	YAEBAS25NTNOEM	Black	W25VT (1)	U25RT (1)	Pink	12			
YAEBAS25PTN		1.02"	YAEBAS25PTNOEM		W25RT (1)						
YAEBAS26NTN	2/0	0.98"	YAEBAS26NTNOEM	Orange	W26VT (1)	U26RT (1)	Black	13			
YAEBAS26PTN		1.02"	YAEBAS26PTNOEM		W26RT (1)						
YAEBAS27NTN	3/0	0.98"	YAEBAS27NTNOEM	Purple	W27VT (1)	U27RT (1)	Orange	14			
YAEBAS27PTN		1.02"	YAEBAS27PTNOEM		W27RT (1)						
YAEBAS28NTN	4/0	0.98"	YAEBAS28NTNOEM	Yellow	W28VT (1)	U28RT (1)	Purple	15			
YAEBAS28PTN		1.02"	YAEBAS28PTNOEM		W28RT (1)						

TYPE YAEB-A-F

T-Style Battery Post Terminals

#2 - 4/0 AWG Solid and Stranded Copper

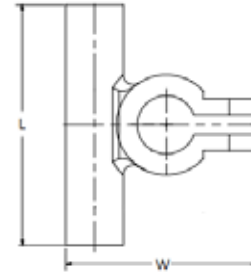
BURNDY T-Style battery post terminals are made from pure copper alloy and tin plated to prevent corrosion. They adhere to SAE, JIS, and DIN stud standards. Typical applications are automotive, marine, transportation, petrochemical, and OEM markets.



Features & Benefits

Barrel:

- Color coded for easy identification
- Chamfered end
- Made of copper alloy, tin plated for corrosion resistance and RoHS compliance
- Supplied standard with stainless steel hardware installed



Post:

- Clamp color coded by polarity; red is positive, black is negative
- Not UL Listed but tested and met UL486A-486B pullout requirements

Catalog Number	Wire Range	Dimensions		Bulk Catalog Number	Conn. Color Code	Installation Tooling			Die Color Code	Die Index	Strip Length
		L	W			MD6, MD734R, 500, 600 Series	35, 750 Series	Dieless (# Crimps)			
YAEBAF2CNTN	#2	2.36	1.89	YAEBAF2CNTNOEM	Green	W2CVT (1)	U2CRT (1)	MY2911 (1) MRC840 (1)	Brown	10	1-9/32
YAEBAF2CPTN				YAEBAF2CPTNOEM		W2CRT (1)					
YAEBAF1CNTN	#1			YAEBAF1CNTNOEM	Pink	W1CVT (1)	U1CRT1 (1)		Green	11	
YAEBAF1CPTN				YAEBAF1CPTNOEM		W1CRT1 (1)					
YAEBAF25NTN	1/0		1.97	YAEBAF25NTNOEM	Black	W25VT (1)	U25RT (1)	MY2911 (1) MRC840 (2)	Pink	12	
YAEBAF25PTN				YAEBAF25PTNOEM		W25RT (1)					
YAEBAF26NTN	2/0			YAEBAF26NTNOEM	Orange	W26VT (1)	U26RT (1)		Black	13	
YAEBAF26PTN				YAEBAF26PTNOEM		W26RT (1)					
YAEBAF27NTN	3/0	YAEBAF27NTNOEM	Purple	W27VT (1)	U27RT (1)	Orange	14				
YAEBAF27PTN		YAEBAF27PTNOEM		W27RT (1)							
YAEBAF28NTN	4/0	YAEBAF28NTNOEM	Yellow	W28VT (1)	U28RT (1)	Purple	15				
YAEBAF28PTN		YAEBAF28PTNOEM		W28RT (1)							

Compression Connections

Battery Terminals
One Hole Grounding / Starter Lugs

TYPE YAGB

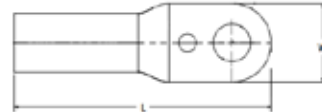
One Hole Battery Grounding / Starter Lugs

#6 - 4/0 AWG Solid and Stranded Copper



Features & Benefits

- Color coded for easy identification
- Chamfered end
- Made of copper alloy, tin plated for corrosion resistance and RoHS compliance
- Not UL Listed but tested and met UL486A-486B pullout requirements



Catalog Number	Wire Range	Stud Size	Dimensions		Bulk Catalog Number	Conn. Color Code	Installation Tooling			Color Code (Die)	Die Index	Strip Length
			L	W			MD6, MD734R, 500, 600 Series	35, 750 Series	Dieless (# Crimps)			
YAGB6CLTC10FX	#6	#10	1.46"	0.44"	YAGB6CLTC10FXOEM	Blue	W5CVT (1) W5CRT (1)	U5CRT (1)	81K Series (1) 4PC Series (1) MY2911 (1) MRC840 (1)	Blue	7	7/8"
YAGB6CLTC14FX		1/4"			YAGB6CLTC14FXOEM							
YAGB6CLTC516FX		5/16"	1.61"	0.60"	YAGB6CLTC516FXOEM							
YAGB6CLTC38FX		3/8"	YAGB6CLTC38FXOEM									
YAGB6CLTC12FX		1/2"	1.73"	0.74"	YAGB6CLTC12FXOEM							
YAGB4CLTC10FX	#4	#10	1.97"	0.75"	YAGB4CLTC10FXOEM	Gray	W4CVT (1) W4CRT (1)	U4CRT (1)	81K Series (1) 4PC Series (1) 644 Series (1) MY2911 (1) MRC840 (1)	Gray	6	15/16"
YAGB4CLTC14FX		1/4"			YAGB4CLTC14FXOEM							
YAGB4CLTC516FX		5/16"			YAGB4CLTC516FXOEM							
YAGB4CLTC38FX		3/8"			YAGB4CLTC38FXOEM							
YAGB4CLTC12FX		1/2"			YAGB4CLTC12FXOEM							
YAGB2CLTC10FX	#2	#10	2.09"	0.81"	YAGB2CLTC10FXOEM	Green	W2CVT (1) W2CRT (1)	U2CRT (1)	81K Series (1) 4PC Series (1) 644 Series (1) MY2911 (1) MRC840 (1)	Brown	10	15/16"
YAGB2CLTC14FX		1/4"			YAGB2CLTC14FXOEM							
YAGB2CLTC516FX		5/16"			YAGB2CLTC516FXOEM							
YAGB2CLTC38FX		3/8"			YAGB2CLTC38FXOEM							
YAGB2CLTC12FX		1/2"			YAGB2CLTC12FXOEM							
YAGB25LTC14FX	1/0	1/4"	2.40"	0.87"	YAGB25LTC14FXOEM	Black	W25VT (1) W25RT (1)	U25RT (1)		Pink	12	
YAGB25LTC516FX		5/16"			YAGB25LTC516FXOEM							
YAGB25LTC38FX		3/8"			YAGB25LTC38FXOEM							
YAGB25LTC12FX		1/2"			YAGB25LTC12FXOEM							
YAGB26LTC14FX	2/0	1/4"	2.44"	0.91"	YAGB26LTC14FXOEM	Orange	W26VT (1) W26RT (1)	U26RT (1)	81K Series (1) 4PC Series (1) 644 Series (1) MY2911 (1) MRC840 (2)	Black	13	1-3/16"
YAGB26LTC516FX		5/16"			YAGB26LTC516FXOEM							
YAGB26LTC38FX		3/8"			YAGB26LTC38FXOEM							
YAGB26LTC12FX		1/2"			YAGB26LTC12FXOEM							
YAGB28LTC14FX	4/0	1/4"	2.56"	1.10"	YAGB28LTC14FXOEM	Yellow	W28VT (1) W28RT (1)	U28RT (1)		Purple	15	
YAGB28LTC516FX		5/16"			YAGB28LTC516FXOEM							
YAGB28LTC38FX		3/8"			YAGB28LTC38FXOEM							
YAGB28LTC12FX		1/2"			YAGB28LTC12FXOEM							

TYPE YCP-L

Compression Cable Pulling Heads

Before using this product, it is required to read, understand, and comply with the Safety Operation Maintenance & Installation manual provided with the product.

Features & Benefits

- Range-taking; only 6 compression pulling heads are required to pull #6 AWG through 1000 kcmil wire
- Accommodates:
 - Copper Class B (Concentric, Compressed, Compact) or Class C wire
 - Aluminum Class B (Concentric, Compressed, Compact)
- Parallel installation; each of the 6 compression pulling heads come in 5 unique lanyard lengths for staggering when pulling multiple wires
- Knurl crimp bands clearly indicate the crimp zone locations on the compression pulling head barrels
- Protection sleeve at the lanyard loop connection

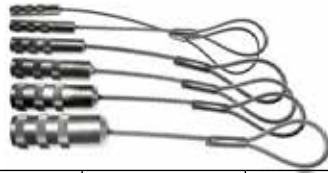
Catalog Number	Barrel OD (in)	Wire Size (Cu & AL)	Lanyard Length (in)	Minimum Wire Strip Length (in)
YCP25L13	.51"	#6 - 1/0 AWG	13"	2.50"
YCP25L20			20"	
YCP25L27			27"	
YCP25L34			34"	
YCP25L41			41"	
YCP28L13	.69"	2/0 AWG 3/0 AWG 4/0 AWG	13"	3.00"
YCP28L20			20"	
YCP28L27			27"	
YCP28L34			34"	
YCP28L41			41"	
YCP31L13	.88"	250 kcmil 300 kcmil 350 kcmil	13"	3.25"
YCP31L20			20"	
YCP31L27			27"	
YCP31L34			34"	
YCP31L41			41"	
YCP34L13	1.06"	400 kcmil 450 kcmil 500 kcmil	13"	3.25"
YCP34L20			20"	
YCP34L27			27"	
YCP34L34			34"	
YCP34L41			41"	
YCP39L13	1.30"	550 kcmil 600 kcmil 650 kcmil 700 kcmil 750 kcmil	13"	3.25"
YCP39L20			20"	
YCP39L27			27"	
YCP39L34			34"	
YCP39L41			41"	



Compression Connections

Compression Cable Pulling Heads
Type YCP-L

TYPE YCP-L (Continued)



Catalog Number	Barrel OD (in)	Wire Size (Cu & AL)	Lanyard Length (in)	Minimum Wire Strip Length (in)
YCP44L13	1.50"	800 kcmil 900 kcmil 1000 kcmil	13"	3.25"
YCP44L20			20"	
YCP44L27			27"	
YCP44L34			34"	
YCP44L41			41"	

Installation Tooling and Max Rated Pull Loads		Max. Rated Pull Load per Cable (lbs) Copper & Aluminum Wire with 444 and 644 Series of Tools			Max. Rated Pull Load per Cable (lbs) Copper & Aluminum Wire with 750 or 46 Platform Tooling			
Catalog Number* (add lanyard length)	Wire Size	Copper (Concentric Compress Compact)	Aluminum (Concentric Compress Compact)	444, 644 Series (# of Crimps)	Copper (Concentric Compress ONLY)	Copper (Compact ONLY)	Aluminum (Concentric Compress Compact)	750, 46** Series Die # (# of Crimps)
YCP25L-*	#6 AWG	200	200	(1)	N/A	N/A	N/A	N/A
	#4 AWG	300	300					
	#3 AWG	400	400					
	#2 AWG	500	400					
	#1 AWG	1,200	400					
YCP28L-*	1/0 AWG	1,200	400	(2)	1,200	550	400	U25RT (1)
	2/0 AWG	1,200	400					
	3/0 AWG	2,000	750					
YCP31L-*	4/0 AWG	2,000	1,000	(3)	2,000	1,000	1,000	U28RT (2)
	250 kcmil	2,000	1,200					
	300 kcmil	4,000	1,500					
YCP34L-*	350 kcmil	4,000	1,800	(3)	4,000	1,400	1,800	U31RT (3)
	400 kcmil	4,000	2,000					
	450 kcmil	5,000	2,400					
YCP39L-*	500 kcmil	5,000	2,700	(3)	5,000	2,200	2,700	U34RT (3)
	550 kcmil	5,000	3,600					
	600 kcmil	5,000	3,600					
	650 kcmil	5,000	3,600					
	700 kcmil	5,000	3,600					
YCP44L-*	750 kcmil	5,000	3,600	(3)	5,000	2,200	3,600	U39RT (3)
	800 kcmil	5,000	3,600					
	900 kcmil	5,000	3,600					
YCP44L-*	1000 kcmil	5,000	5,000	(3)	5,000	2,200	5,000	U44XRT (3)

* Lanyard length needs to be added for complete catalog number. Example: YCP34L13 is 13" Lanyard Length.

**46 Series requires PUADP1 adapter to use U dies.