

## TYPE YA-A

### HYLUG™

UL Listed 90° C, Up to 35 kV ♦

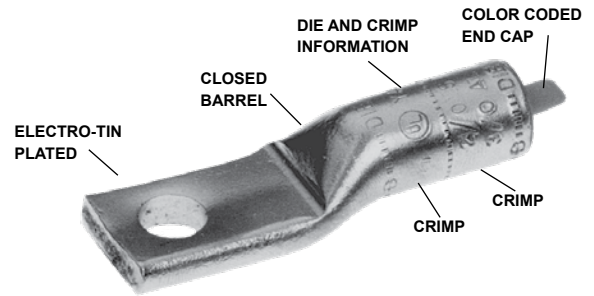


Type YA-A aluminum tin-plated compression HYLUG™ terminals are dual-rated and designed for use on both aluminum and copper conductors from #12 solid through 2000 kcmil.

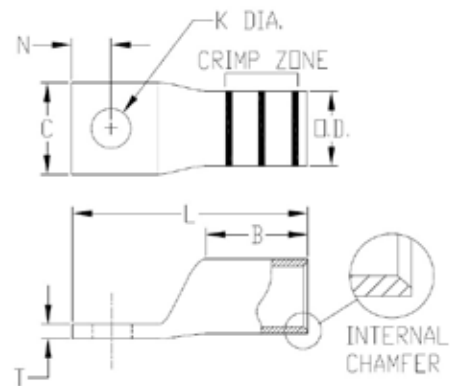
See Pages C-194 through C-197 for Type YA-A Installation Tooling Information.

## Features & Benefits

- UL486A-486B Listed and CSA Certified
- Aluminum terminals are dual rated to accommodate both copper and aluminum wire and are indicated with AL-CU on the connector:
  - AL9CU indicates the terminal can accommodate aluminum and copper wire and is UL Listed 90°C, up to 35kV
  - AL7CU indicates the terminal can accommodate aluminum and copper wire and is UL Listed 75°C, up to 35kV
- Barrel is designed with an internal chamfer at the wire entry to ensure smooth insertion of the wire, preventing possible damaging of the wire strands during insertion
- 45° and 90° angular lugs are available, please contact Customer Service
- Electro-tin plated unless otherwise specified to reduce galvanic corrosion (bimetallic) and resist corrosive elements
- Connectors are clearly marked with wire size, die index, color code, and crimp location bands
- Factory pre-filled with PENETROX™ Type A13 oxide inhibitor
- Color coded end caps are factory inserted in the barrels to match the die color code and prevent foreign materials from entering the barrel
- Aluminum oxidation is not easily detected but causes resistance in a connection; it is imperative the proper preparation takes place prior to making an aluminum-to-aluminum connection
- BURNDY certifies its products using the BURNDY Engineered System and select other crimp tool manufacturers in accordance with one or more of the UL categories in order to obtain a UL Listing
- Connectors have been tested with expanded wire ranges when installed with specified dieless tools. See Beginning of Section C for Expanded Ranges Tables.
- Conductor Accommodate Types:
  - Aluminum Code Wire: Class B (Concentric, Compressed, Compact)
  - Copper Code Wire: Class B (Concentric, Compressed, Compact or Class C)
  - Copper Clad Aluminum: Noted in the conductor accommodates as CCA



**NOTE:** Field bending straight lugs to achieve an angular connection will void UL Listing / CSA Certifications and BURNDY will not be liable for the connection.



## Accessories

- Hardware - Section F
- PENETROX™ Oxide Inhibitor - Section F
- Heat and Cold Shrink Tubing - Section D
- WIREMIKE™ Wire Micrometer - Section F
- Wire Management (Cable Ties) - Section G

# Compression Connections

Aluminum / Copper — One Hole  
Uninsulated Aluminum Terminals

## TYPE YA-A (Continued)



AL9CU



**NOTE:** Field bending straight lugs to achieve an angular connection will void UL Listing / CSA Certifications and BURNDY will not be liable for the connection.

Catalog Number	AL / Cu Conductor	Dimensions									Color Code	Die Index	Wire Strip Length	Temperature Rating
		Stud Size	Stud Hole Diameter (K)	No. of Holes in Pad	Outside Diameter (OD)	Barrel Length (B)	Pad Width (C)	Overall Length (L)	Hole Offset (N)	Pad Thickness (T)				
YA12ATN*	12 AWG Sol./Str.	#10	0.20	1	0.21	0.50	0.41	1.19	0.20	0.07	—	—	5/8	75° C
YA10ATN*	10 AWG Sol./Str.	#10	0.20	1	0.21	0.50	0.41	1.22	0.20	0.06	—	—	5/8	75° C
YA8CA1	8 AWG	#10	0.20	1	0.30	0.62	0.53	1.50	0.20	0.09	Blue	374	5/8	75° C
YA8CA3		1/4	0.28	1	0.30	0.62	0.53	1.65	0.25	0.09				
YA6CA1	6 AWG	1/4	0.28	1	0.34	0.75	0.47	1.84	0.33	0.14	Gray	346	3/4	90° C
YA6CA3		3/8	0.44	1	0.34	0.75	0.65	2.28	0.44	0.09				
YA4CA1	4 AWG	1/4	0.28	1	0.43	0.88	0.47	2.13	0.33	0.18	Green	375	7/8	90° C
YA4CA3		5/16	0.38	1	0.43	0.88	0.80	2.25	0.41	0.12				
YA4CA6		3/8	0.44	1	0.43	0.88	0.80	2.32	0.44	0.12				
YA2CA5	2 AWG	1/4	0.28	1	0.53	1.00	0.50	2.25	0.33	0.22	Pink	348	1-1/8	90° C
YA2CA1		5/16	0.38	1	0.53	1.12	0.88	2.50	0.41	0.16				
YA2CA3		3/8	0.44	1	0.53	1.12	0.88	2.56	0.44	0.16				
YA1CA1	1 AWG	3/8	0.44	1	0.54	0.91	0.76	2.59	0.44	0.19	Gold	471	15/16	90° C
YA25A1	1/0 AWG	5/16	0.38	1	0.60	1.00	0.60	2.31	0.41	0.21	Tan	296	1-1/16	90° C
YA25A3		3/8	0.44	1	0.60	1.05	0.82	2.67	0.63	0.21				
YA25A9		1/2	0.56	1	0.60	1.05	1.03	2.83	0.63	0.17				
YA26A7	2/0 AWG	5/16	0.38	1	0.67	1.17	0.67	2.52	0.41	0.24	Olive	297	1-3/8	90° C
YA26A6		3/8	0.44	1	0.67	1.17	0.67	2.79	0.44	0.24				
YA26A1		1/2	0.56	1	0.67	1.17	1.03	3.03	0.63	0.20				
YA26A8		5/8	0.69	1	0.67	1.17	1.03	3.03	0.63	0.20				
YA27A1	3/0 AWG	3/8	0.44	1	0.76	1.11	0.73	2.88	0.44	0.26	Ruby	467	1-1/2	90° C
YA27A3		1/2	0.56	1	0.76	1.31	1.04	3.27	0.63	0.26				
YA28A1	4/0 AWG	3/8	0.44	1	0.85	1.39	1.17	3.26	0.44	0.30	White	298	1-5/8	90° C
YA28A3		1/2	0.56	1	0.85	1.39	1.17	3.44	0.63	0.30				
YA29A9	250 kcmil	3/8	0.41	1	0.92	1.45	1.26	3.09	0.41	0.33	Red	324	1-9/16	90° C
YA29A1		1/2	0.56	1	0.92	1.45	1.26	3.53	0.63	0.33				
YA29A6		5/8	0.69	1	0.92	1.45	1.26	3.69	0.75	0.33				
YA30A6	300 kcmil 4/0 AWG CCA DLO (329/22)	3/8	0.44	1	1.01	1.53	1.38	3.90	0.63	0.36	Blue	470	1-3/4	90° C
YA30A1		1/2	0.56	1	1.01	1.53	1.38	3.90	0.63	0.36				
YA31A6	350 kcmil 250 kcmil CCA DLO (399/22)	3/8	0.44	1	1.11	1.85	1.52	3.95	0.44	0.39	Brown	299	2-1/8	90° C
YA31A1		1/2	0.56	1	1.11	1.85	1.52	4.33	0.63	0.39				
YA31A12		5/8	0.65	1	1.11	1.85	1.52	4.33	0.44	0.39				
YA32A9	400 kcmil	3/8	0.41	1	1.19	2.26	1.62	3.95	0.41	0.43	Green	472	2-5/16	90° C
YA32A6		1/2	0.56	1	1.19	2.26	1.62	4.92	0.88	0.43			2-1/2	90° C
YA32A1		5/8	0.69	1	1.19	2.26	1.62	4.92	0.88	0.43			2-1/2	90° C

- Contact BURNDY® for conductor, stud sizes and hole drillings not shown.
- ♦ For applications greater than 2000 Volts consult cable manufacturer for voltage stress relief instructions.
- \* AL Conductor Only

**Note:** All dimensions shown are for reference only.

See Pages C-194 through C-197 for Type YA-A Installation Tooling Information.

## TYPE YA-A (Continued)



AL9CU

**NOTE:** Field bending straight lugs to achieve an angular connection will void UL Listing / CSA Certifications and BURNDY will not be liable for the connection.

Catalog Number	AL / Cu Conductor	Dimensions									Color Code	Die Index	Wire Strip Length	Temperature Rating
		Stud Size	Stud Hole Diameter (K)	No. of Holes in Pad	Outside Diameter (OD)	Barrel Length (B)	Pad Width (C)	Overall Length (L)	Hole Offset (N)	Pad Thickness (T)				
YA34A7	500 kcmil	1/2	0.56	1	1.32	2.34	1.80	5.02	0.63	0.46	Pink	300	2-5/8	90° C
YA34A1	350 kcmil CCA DLO (551/22)	5/8	0.69	1	1.32	2.34	1.80	5.56	0.88	0.46				
YA36A8	600 kcmil	1/2	0.56	1	1.44	2.47	1.97	5.64	0.69	0.52	Black	473	2-7/8	90° C
YA36A1	500 kcmil CCA DLO (779/22)	5/8	0.69	1	1.44	2.47	1.97	5.82	0.88	0.52				
YA39A1	700 - 750	1/2	0.56	1	1.46	2.46	2.05	5.26	0.63	0.43	Yellow	936	2-7/8	90° C
YA39A3	kcmil	5/8	0.69	1	1.46	2.46	2.05	5.80	0.88	0.43				
YA39A34	900 kcmil Compact AL† 600 kcmil CCA DLO (925/22)	3/4	0.81	1	1.46	2.46	2.05	6.17	1.00	0.43				
YA42A1	900 kcmil AL	1/2	0.56	1	1.50	2.46	2.14	5.32	0.63	0.39	Gray	303	2-7/8	90° C
YA42A3		5/8	0.69	1	1.50	2.46	2.14	5.32	0.66	0.39				
YA44A1	1000 kcmil 750 kcmil CCA DLO (1194/22) 800 kcmil CCA DLO (1258/22)	5/8	0.69	1	1.84	2.74	2.50	6.50	0.88	0.66	Brown	302	3	90° C

- Contact BURNDY® for conductor, stud sizes and hole drillings not shown.
  - ♦ For applications greater than 2000 Volts consult cable manufacturer for voltage stress relief instructions.
  - † Listed using 444S / 644 Series Tools only.
- Note:** All dimensions shown are for reference only.

See Pages C-194 through C-197 for Type YA-A Installation Tooling Information.

### TYPE YA-A

HYLUG™

UL Listed 90° C, Up to 35 kV ♦

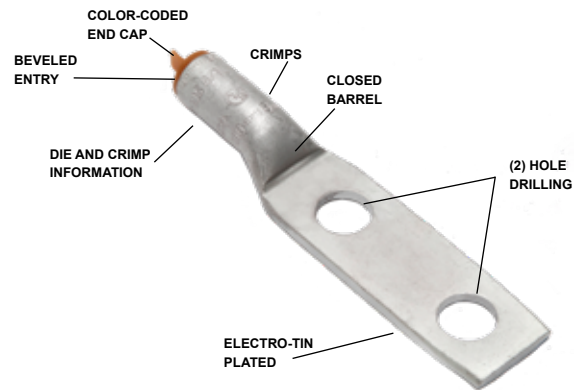


Type YA-A terminals in 2- and 4-hole designs inhibit connector rotation and increase area contact. These aluminum terminals have the same design features and benefits as the 1-hole YA-A with an added stud hole for a more secure termination to various types of equipment pads. They are dual-rated for use on both aluminum and copper conductors.

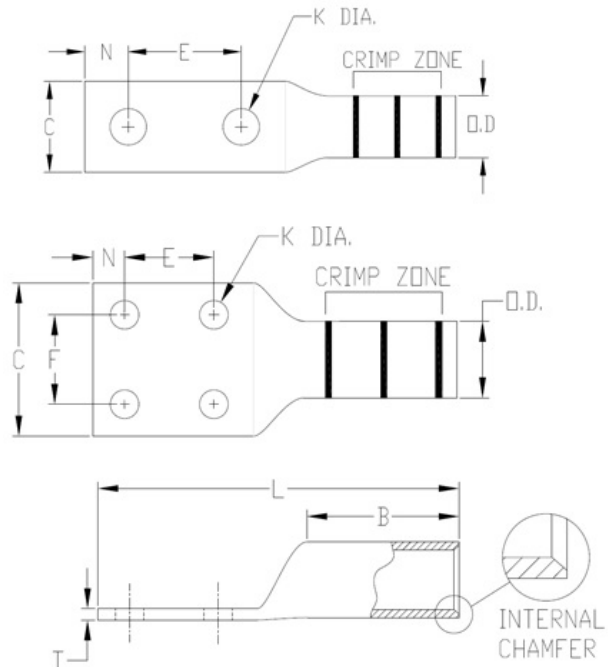
See Pages C-194 through C-197 for Type YA-A Installation Tooling Information.

### Features & Benefits

- UL486A-486B Listed and CSA Certified
- Aluminum terminals are dual rated to accommodate both copper and aluminum wire and are indicated with AL-CU on the connector:
  - AL9CU indicates the terminal can accommodate aluminum and copper wire and is UL Listed 90°C, up to 35kV
  - AL7CU indicates the terminal can accommodate aluminum and copper wire and is UL Listed 75°C, up to 35kV
- Barrel is designed with an internal chamfer at the wire entry to ensure smooth insertion of the wire, preventing possible damaging of the wire strands during insertion
- 45° and 90° angular lugs are available, please contact Customer Service
- Electro-tin plated unless otherwise specified to reduce galvanic corrosion (bimetallic) and resist corrosive elements
- Connectors are clearly marked with wire size, die index, color code, and crimp location bands
- Factory pre-filled with PENETROX™ Type A13 oxide inhibitor
- Color coded end caps are factory inserted in the barrels to match the die color code and prevent foreign materials from entering the barrel
- Aluminum oxidation is not easily detected but causes resistance in a connection; it is imperative the proper preparation takes place prior to making an aluminum-to-aluminum connection
- BURNDY certifies its products using the BURNDY Engineered System and select other crimp tool manufacturers in accordance with one or more of the UL categories in order to obtain a UL Listing
- Connectors have been tested with expanded wire ranges when installed with specified dieless tools. See Beginning of Section C for Expanded Ranges Tables.
- Conductor Accommodate Types:
  - Aluminum Code Wire: Class B (Concentric, Compressed, Compact)
  - Copper Code Wire: Class B (Concentric, Compressed, Compact or Class C)
  - Copper Clad Aluminum: Noted in the conductor accommodates as CCA



**NOTE:** Field bending straight lugs to achieve an angular connection will void UL Listing / CSA Certifications and BURNDY will not be liable for the connection.



### Accessories

- Hardware - Section F
- PENETROX™ Oxide Inhibitor - Section F
- Heat and Cold Shrink Tubing - Section D
- WIREMIKE™ Wire Micrometer - Section F
- Wire Management (Cable Ties) - Section G

## TYPE YA-A (Continued)



AL9CU



**NOTE:** Field bending straight lugs to achieve an angular connection will void UL Listing / CSA Certifications and BURNDY will not be liable for the connection.

Catalog Number	AL / Cu Conductor	Stud Size	Stud Hole Diameter (K)	No. of Holes in Pad	Dimensions								Color Code	Die Index	Wire Strip Length	Temperature Rating
					Outside Diameter (OD)	Barrel Length (B)	Pad Width (C)	Overall Length (L)	Hole Spacing (E)	Hole Spacing (F)	Hole Offset (N)	Pad Thickness (T)				
YA2CA9	2 str.	1/2	0.56	2	0.53	1.12	0.88	4.73	1.75	—	0.63	0.16	Pink	348	1-1/8	90° C
YA25A7	1/0 str.	1/2	0.56	2	0.60	1.05	1.03	4.59	1.75	—	0.63	0.17	Tan	296	1-1/16	90° C
YA25A5		3/8	0.44	2	0.60	1.05	0.82	3.73	1.06	—	0.63	0.21				
YA26A3	2/0 str.	1/2	0.56	2	0.67	1.17	1.03	4.78	1.75	—	0.63	0.20	Olive	297	1-3/8	90° C
YA26A5		3/8	0.44	2	0.67	1.17	0.92	3.56	1.00	—	0.44	0.24				
YA27A7	3/0 str.	3/8	0.44	2	0.76	1.31	1.04	3.79	1.00	—	0.44	0.26	Ruby	467	1-1/2	90° C
YA27A5		1/2	0.56	2	0.76	1.31	1.04	5.02	1.75	—	0.63	0.26				
YA28A7	4/0 str.	3/8	0.44	2	0.85	1.39	1.17	3.97	1.00	—	0.44	0.30	White	298	1-5/8	90° C
YA28A5		1/2	0.56	2	0.85	1.39	1.17	5.19	1.75	—	0.63	0.30				
YA29A5	250 kcmil	3/8	0.44	2	0.92	1.45	1.26	4.06	1.00	—	0.44	0.33	Red	324	1-5/8	90° C
YA29A3		1/2	0.56	2	0.92	1.45	1.26	5.28	1.75	—	0.63	0.33				
YA30A5	300 kcmil 4/0 AWG CCA DLO (329/22)	3/8	0.44	2	1.01	1.53	1.38	4.42	1.00	—	0.44	0.36	Blue	470	1-3/4	90° C
YA30A3		1/2	0.56	2	1.01	1.53	1.38	5.64	1.75	—	0.63	0.36				
YA31A5	350 kcmil 250 kcmil CCA DLO (399/22)	3/8	0.44	2	1.11	1.85	1.52	4.85	1.00	—	0.44	0.39	Brown	299	2-1/8	90° C
YA31A3		1/2	0.56	2	1.11	1.85	1.52	6.07	1.75	—	0.63	0.39				
YA32A5	400 kcmil	3/8	0.44	2	1.19	2.26	1.62	4.93	1.00	—	0.44	0.43	Green	472	2	90° C
YA32A3		1/2	0.56	2	1.19	2.26	1.62	6.15	1.75	—	0.63	0.43				
YA34A5	500 kcmil 350 kcmil CCA DLO (551/22)	3/8	0.44	2	1.32	2.34	1.80	5.54	1.00	—	0.44	0.46	Pink	300	2-5/8	90° C
YA34A3 †		1/2	0.56	2	1.32	2.34	1.62	6.80	1.75	—	0.63	0.46				
YA34A8		1/2	0.56	2	1.32	2.34	1.80	6.77	1.75	—	0.63	0.46				
YA36A5	600 kcmil 500 kcmil CCA DLO (779/22)	3/8	0.44	2	1.44	2.47	1.97	5.64	1.00	—	0.69	0.52	Black	473	2-7/8	90° C
YA36A3 †		1/2	0.56	2	1.44	2.47	1.62	7.09	1.75	—	0.63	0.52				
YA36A17		1/2	0.56	2	1.44	2.47	1.97	7.06	1.75	—	0.63	0.52				

† Narrow tongue design; may be mounted side-by-side on a 4-hole NEMA pad  
 • Contact BURNDY® for conductor, stud sizes and hole drillings not shown.  
 ♦ For applications greater than 2000 Volts consult cable manufacturer for voltage stress relief instructions.  
**Note:** All dimensions shown are for reference only.

See Pages C-194 through C-197 for Type YA-A Installation Tooling Information.

# Compression Connections

Aluminum / Copper — Two and Four Hole  
Uninsulated Aluminum Terminals

## TYPE YA-A (Continued)



AL9CU



**NOTE:** Field bending straight lugs to achieve an angular connection will void UL Listing / CSA Certifications and BURNDY will not be liable for the connection.

Catalog Number	AL / Cu Conductor	Stud Size	Stud Hole Diameter (K)	No. of Holes in Pad	Dimensions								Color Code	Die Index	Wire Strip Length	Temperature Rating
					Outside Diameter (OD)	Barrel Length (B)	Pad Width (C)	Overall Length (L)	Hole Spacing (E)	Hole Spacing (F)	Hole Offset (N)	Pad Thickness (T)				
YA39A7	700 - 750 kcmil	3/8	0.44	2	1.46	2.46	2.05	5.81	1.00	—	0.44	0.43	Yellow	936	2-7/8	90° C
YA39A5 †	900 kcmil	1/2	0.56	2	1.46	2.46	1.62	7.07	1.75	—	0.63	0.43				
YA39A13	Compact AL* 600 kcmil CCA DLO (925/22)	1/2	0.56	2	1.46	2.46	2.05	7.04	1.75	—	0.63	0.43				
YA39AM2	600 kcmil CCA DLO (925/22)	1/2	0.56	2	1.60	2.56	1.69	7.31	1.75	—	0.63	0.57	Red	301	2-7/8	90° C
YA42A7	900 kcmil AL	3/8	0.44	2	1.50	2.46	2.14	5.96	1.00	—	0.44	0.39	Gray	303	2-7/8	90° C
YA42A5		1/2	0.56	2	1.50	2.46	1.62	7.09	1.75	—	0.63	0.39				
YA44A3 †	1000 kcmil 750 kcmil CCA DLO (1194/22) 800 kcmil CCA DLO (1258/22)	1/2	0.56	2	1.84	2.74	1.65	7.76	1.75	—	0.63	0.55	Brown	302	3	90° C
YA44A8		1/2	0.56	2	1.84	2.74	2.50	7.76	1.75	—	0.63	0.66				
YA45A5	1250 kcmil 900 kcmil CCA DLO (1406/22) 1000 kcmil CCA DLO (1554/22)	1/2	0.56	2	1.84	2.74	2.59	7.73	1.75	—	0.63	0.51	Brown	302	3	75° C
YA46A3	1500 kcmil	1/2	0.56	2	2.26	3.30	3.08	8.73	1.75	—	0.63	0.81	Blue	478	2-3/4	75° C
YA46A5		1/2	0.56	4	2.26	3.30	3.08	8.73	1.75	1.75	0.63	0.81				
YA48A3	2000 kcmil	1/2	0.56	2	2.60	3.69	3.57	8.49	1.75	—	0.63	0.90	Red	479	4-1/8	75° C

† Narrow tongue design; may be mounted side-by-side on a 4-hole NEMA pad

\* Contact BURNDY® for conductor, stud sizes and hole drillings not shown.

◆ For applications greater than 2000 Volts consult cable manufacturer for voltage stress relief instructions.

\* Listed using 444S / 644 Series Tools only

**Note:** All dimensions shown are for reference only.

See Pages C-194 through C-197 for Type YA-A Installation Tooling Information.