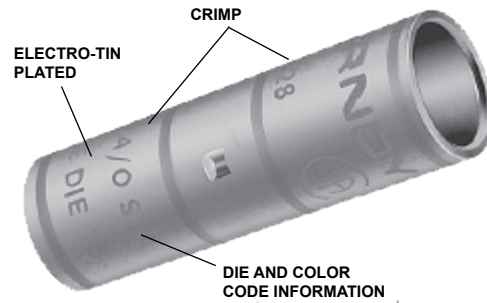


## TYPE YS-L

HYLINK™ Splice

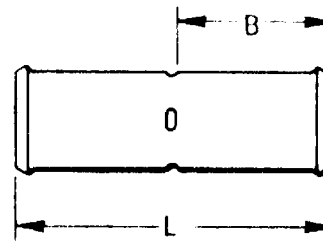


UL Listed 90° C, Up to 35 kV ◆



### Features & Benefits

- Copper seamless barrel has center stop indentations used to indicate when wire is fully inserted into each side of the barrel
- Barrel is designed with an internal chamfer at the wire entry to ensure smooth insertion of the wire, preventing possible damaging of the wire strands during insertion
- Electro-tin plated unless otherwise specified to reduce galvanic corrosion (bimetallic) and resist corrosive elements
- Short/standard length barrel is recommended for installation with limited space requirements
- Connectors clearly marked with color coding
- BURNDY certifies its products using the BURNDY Engineered System and select other crimp tool manufacturers in accordance with one or more of the UL categories in order to obtain a UL Listing
- Terminals and splices accommodating code wire: Accommodates Code Class B (Concentric, Compressed, Compact) and Class C wire



Catalog Number	Conductor		Dimensions		Dieless (# of crimps)	Installation Tooling ▲					Wire Strip Length		
	AWG	*** MM <sup>2</sup>	L	B		Mechanical			35 ■, 750, 46* Series			▲ Die Index & Embossment	
						Y1MRTC Y2MR	MD734R	MD6 OUR840	Die Number (# crimps)	Color Code			
YS8CLBOX	8 Str.	10	1.00	0.44	81K Series (1)	Y1MRTC (1)	W8CVT (1)	X8CRT (1)	U8CRT (1)	Red	49	1/2"	
YS6CLBOX	6 Str.	—	1.75	0.81			W5CVT (1)	X5CRT (1)	U5CRT (1)	Blue	7 or 374	7/8"	
YS5CLBOX	5 Str.	16	1.90	0.81		Y1MRTC (2)	W4CVT (1)	X4CRT (1)	U4CRT (1)	Gray	8 or 346	7/8"	
YS4CLBOX	4 Str.	—	1.75	0.81			—	—	U3CRT (1)	White	9	15/16"	
YS3CL	3 Str./ 2 Sol.	25	2.05	0.88			W2CVT (1)	X2CRT (1)	U2CRT (1)	Brown	10	15/16"	
YS2CLBOX	2 Str.	—	2.00	0.88			W1CVT (1)	X1CRT (1)	U1CRT1 (1)	Green	11 or 375	15/16"	
YS1CLBOX	1 Str.	50	2.06	0.88		81K Series (2)	—	W25VT (2)	X25RT (2)	U25RT (1)	Pink	12 or 348	15/16"
YS25LBOX	1/0 Str.	—	2.08	0.88				W26VT (2)	X26RT (2)	U26RT (1)	Black	13	1"
YS26LBOX	2/0 Str.	70	2.17	0.94				W27VT (2)	X27RT (2)	U27RT (1)	Orange	14	1-1/16"
YS27LBOX	3/0 Str.	95	2.30	1.00				W28VT (2)	X28RT (2)	U28RT (1)	Purple	15	1-1/16"
YS28LBOX	4/0 Str.	—	2.32	1.00	W29VT (2)			—	U29RT (1)	Yellow	16	1-1/8"	
YS29LBOX	250 kcmil	120	2.46	1.06	W30VT (2)			—	U30RT (2)	White	17 or 298	1-1/8"	
YS30L	300 kcmil	150	2.47	1.06	W31VT (2)			—	U31RT (2)	Red	18 or 324	1-3/16"	
YS31L	350 kcmil	185	2.60	1.12	W32VT (2)			—	U32RT (2)	Blue	19 or 470	1-1/4"	
YS32L	400 kcmil	—	2.74	1.19	W34VT (2)			—	U34RT (2)	Brown	20 or 299	1-7/16"	
YS34L	500 kcmil	240	3.15	1.38	81K Series (3)			—	U36RT (2)	Green	22 or 472	1-7/16"	
YS36L	600 kcmil	300	3.22	1.38		U38RT (2)	Pink		400	1-7/16"			
YS38L	700 kcmil	—	3.22	1.38		U39RT (2)	Black		24	1-11/16"			
YS39L	750 kcmil	—	3.72	1.62		P44RT (2)**	White		27	1-15/16"			
YS44L	1000 kcmil	500	4.28	1.88									

▲ See tooling section of this catalog for complete tool and die listings.

\* Use PUADP1 adaptor with U dies in 46 Series.

\*\* P44RT for use with 46 Series only. PUADP1 adaptor not required.

\*\*\* The MM<sup>2</sup> conductor sizes listed are the recommendations for Class 2 conductor.

■ The maximum size for the Y35 is 400 kcmil insulated code cable.

◆ For applications greater than 2000 Volts consult cable manufacturer for voltage stress relief instructions.

Note: All dimensions shown are for reference only.

## TYPE YS

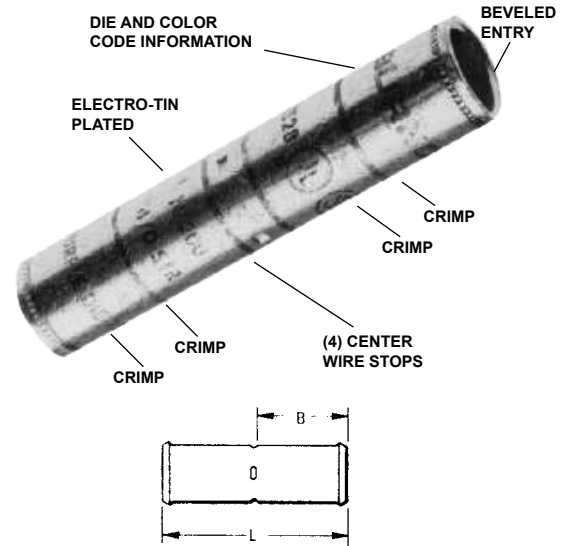
### HYLINK™ Splice, Long Barrel

UL Listed 90° C, Up to 35 kV ♦



### Features & Benefits

- Copper seamless barrel has center stop indentations used to indicate when wire is fully inserted into each side of the barrel
- Barrel is designed with an internal chamfer at the wire entry to ensure smooth insertion of the wire,
- Electro-tin plated unless otherwise specified to reduce galvanic corrosion (bimetallic) and resist corrosive elements
- Barrel is color coded to ensure proper die and installation tooling is selected
- Long barrel allows for an increased number of crimps which will increase the mechanical strength of the connection
- Terminals and splices accommodating code wire: Accommodates Code Class B (Concentric, Compressed, Compact) and Class C wire



Catalog Number	Conductor		Dimensions		Dieless (# of crimps)	Installation Tooling ▲					Wire Strip Length		
	AWG	mm²	L	B		Mechanical			35 ■, 750, 46* Series			Die Index & Embossment	
						Y1MRTC	MD734R	MD6 OUR840	Die Number (# crimps)	Color Code			
YS8C	8 Str.	10	1.75	0.78	81K Series (1)	Y1MRTC (2)	W8CVT (2)	X8CRT (2)	U8CRT (2)	Red	49	7/8	
YS6C	6 Str.	—	2.38	1.09			W5CVT (2)	X5CRT (2)	U5CRT (2)	Blue	7 or 374	1-3/16	
YS5C	5 Str.	16	2.55	1.09			W5CVT (2)	X5CRT (2)	U5CRT (2)	Blue	7 or 374	1-3/16	
YS4C	4 Str.	—	2.55	1.09			W4CVT (2)	X4CRT (2)	U4CRT (2)	Gray	8 or 346	1-3/16	
YS3C	3 Str./2 Sol.	25	2.80	1.22	81K Series (2)	Y1MRTC (4)	—	W3CRT (2)	—	White	9	1-5/16	
YR2C2WT	2 Str. - 2Sol.	25	3.03	1.25			W2CVT (2)	W2CVT (2)	U2CRT (2)	Brown	10	1-5/8	
YS2C	2 Str.	35	2.82	1.22			W2CVT (2)	X2CRT (2)	U2CRT (2)	Brown	10	1-5/16	
YS1C	1 Str.	50	3.07	1.34			W1CVT (2)	X1CRT1 (2)	U1CRT1 (2)	Green	11 or 375	1-7/16	
YS25	1/0 Str.	—	3.08	1.34			—	W25VT (4)	X25RT (4)	U25RT (2)	Pink	12 or 348	1-7/16
YS26	2/0 Str.	70	3.30	1.45			—	W26VT (4)	X26RT (4)	U26RT (2)	Black	13	1-9/16
YS27	3/0 Str.	—	3.30	1.45			—	W27VT (4)	X27RT (4)	U27RT (2)	Orange	14	1-9/16
YS28	4/0 Str.	—	3.57	1.58			—	W28VT (4)	X28RT (4)	U28RT (2)	Purple	15	1-11/16
YS29	250 kcmil	120	3.58	1.58			—	W29VT (4)	—	U29RT (2)	Yellow	16	1-11/16
YS30	300 kcmil	150	4.34	1.95			81K Series (3)	—	W30VT (4)	—	U30RT (4)	White	17 or 298
YS31	350 kcmil	185	4.35	1.95	—	W31VT (4)		—	U31RT (4)	Red	18 or 324	2-1/16	
YS32	400 kcmil	—	4.62	2.08	—	W32VT (4)		—	U32RT (4)	Blue	19 or 470	2-3/16	
YS34	500 kcmil	240	4.91	2.20	81K Series (4)	—	W34VT (4)	—	U34RT (4)	Brown	20 or 299	2-5/16	
YS36	600 kcmil	300	5.85	2.63		—	—	—	U36RT (4)	Green	22 or 472	2-3/4	
YS39	750 kcmil	—	6.38	2.81		—	—	—	U39RT (4)	Black	24	2-15/16	
YS44	1000 kcmil	500	6.55	2.94		—	—	—	P44RT (2)	White	27	3-1/16	
YS46	1500 kcmil	—	7.01	3.13	—	—	—	P46RT (6)	Green	31	3-1/4		
YS48	2000 kcmil	—	7.57	3.27	—	—	—	† L48RT (4)	Brown	34	3-3/8		

① Not color coded.

\* Use PUADP1 adapter with U dies in 46 Series.

\*\* P44RT for use with 46 Series tooling only. PUADP1 adapter not required.

\*\*\* The MM² conductor sizes listed are the recommendations for Class 2 conductor.

■ The maximum size for the Y35 is 400 kcmil.

▲ See tooling section of this catalog for complete tool and die listings

♦ For applications greater than 2000 Volts consult cable manufacturer for voltage stress relief instructions.

† Requires 60 Ton Series with L48RT die set.

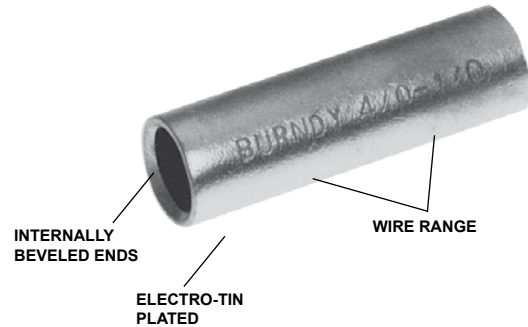
Note: All dimensions shown are for reference only.

### TYPE Y-R

#### Reducing Adapter for Copper

Up to 35 kV ♦

Type Y-R reducing adapter has been designed to allow large size, long barrel, copper HYDENT™, HYSPLICE™, and HYTEE™ terminals, splices and T-taps to be used on small conductor sizes. To use, simply insert the reducer into the barrel, insert the wire into the reducer adapter and crimp the outer barrel using its recommended tooling.



#### Features & Benefits

- Reducing adapters fit inside copper long barrel compression terminals (Type YA-), splices (Type YS-), or tap connectors
- The outside diameter of the reducing adapter is equivalent to the terminal or splice accommodating wire size, and the inside diameter of the reducer adapter is reduced to accommodate a smaller wire size
- Use the same installation tooling and die sets or dieless tool recommended for the compression terminal, splice, or tap connector with the reducing adapter
- Barrel is designed with an internal chamfer at the wire entry to ensure smooth insertion of the wire, preventing possible damage of the wire strands during insertion
- Electro-tin plated, unless otherwise specified, to reduce galvanic corrosion (bimetallic) and resist corrosive elements
- Can be field modified to fit short length compression terminals (Type YA-L) and splices (Type YS-L)
- Connectors are clearly marked with stamping
- Terminals and splices accommodating code wire: Accommodates Code Class B (Concentric, Compressed, Compact) and Class C wire



**Example Accommodate a 4/0 AWG wire on one end and a #2 AWG wire on the other:**

1. Use a YS28 (which splices two 4/0 AWG wires on each end)
2. Select a Y282CR reducing adapter (reducing adapter fits the YS28 barrel with a reduced inside diameter that accommodates a #2 AWG wire size)
3. Fully insert the Y282CR reducing adapter into one end of the YS28 splice barrel
4. Insert the #2 AWG wire into the Y282CR reducing adapter that is inside the YS28 splice barrel
5. Crimp the YS28 barrel side with the Y282CR reducing adapter, using the recommended die and tool combination or dieless tool as specified for use on the YS28
6. Insert the 4/0 AWG wire into the other end of the YS28 barrel and crimp that side of the splice using the recommended installation tooling and your splice reducing connection is complete!

Catalog Number	Wire Range		Dimensions	
	From	To	Max O.D.	L
Y286CR	4/0 AWG	6,8, Str. 6 Sol.	0.53	1.75
Y284WR		4 Sol.	0.53	1.75
Y284CR		4 Str.	0.53	1.75
Y282CR		2 Str.	0.53	1.75
Y281CR		1 Str.	0.53	1.75
Y2825R		1/0 Str.	0.53	1.75
Y2826R		2/0 Str.	0.53	1.75
Y2827R		3/0 Str.	0.53	1.75
Y2928R		250 kcmil	4/0	0.58
Y304CR	300 kcmil	4	0.64	2.00
Y302CR		2	0.64	2.00
Y3025R		1/0	0.64	2.00
Y3026R		2/0	0.64	2.00
Y3027R		3/0	0.64	2.00
Y3028R		4/0	0.64	2.00
Y3126R		350 kcmil	2/0	0.69
Y3128R	4/0		0.69	2.00
Y3129R	250		0.69	2.00
Y342CR	500 kcmil	2 Str.	0.82	2.50
Y3425R		1/0 Str.	0.82	2.50
Y3426R		2/0 Str.	0.82	2.50
Y3427R		3/0 Str.	0.82	2.50
Y3428R		4/0 Str.	0.82	2.50
Y3429R		250 kcmil	0.82	2.50
Y3430R		300 kcmil	0.82	2.50
Y3431R		350 kcmil	0.82	2.50
Y3432R	400 kcmil	0.82	2.50	
Y3934R	750 kcmil	500 kcmil	1.02	2.88
Y3936R		600 kcmil	1.02	2.88
Y4439R	1000 kcmil	750 kcmil	1.30	3.00

Contact Technical Support for other sizes not listed.

♦ For applications greater than 2000 Volts consult cable manufacturer for voltage stress relief instructions.

**Note:** All dimensions shown are for reference only.

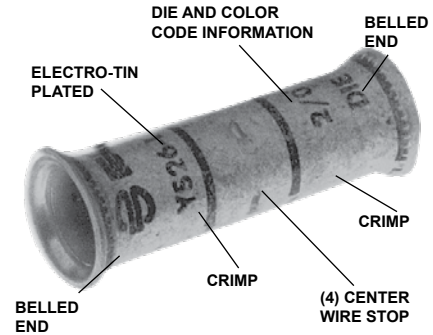
## TYPE YS-LB

### HYLINK™ Splice, Belled Ends



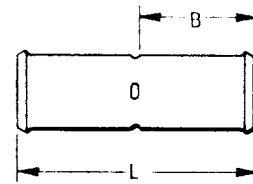
UL Listed 90° C, Up to 35 kV ♦

Type YS-LB HYLINK™ splices are designed for flexible and extra flexible copper conductors used in mining machines, locomotives, welding cables and other flexible cable applications. The seamless, high conductivity copper, electro-tin plated belled barrel provides for easy insertion of flexible stranded conductors and the nest indentor die system provides an excellent electrical and mechanical connection.



### Features & Benefits

- Copper seamless barrel is designed with a “belled” end opening at the wire entry to ensure smooth insertion of highly flexible stranded wire, preventing damaging of the wire strands during insertion
- Electro-tin plated unless otherwise specified to reduce galvanic corrosion (bimetallic) and resist corrosive elements
- Short/standard length barrel is recommended for installations with limited space requirements
- Barrel has center stop indentations used to indicate when wire is fully inserted into each side of the barrel
- Connectors are clearly marked with color coding to ensure proper die and installation tooling is selected
- BURNDY certifies its products using the BURNDY Engineered System and select other crimp tool manufacturers in accordance with one or more of the UL categories in order to obtain a UL Listing



See next page for Installation Tooling Information

Catalog Number	Copper Conductor							Dimensions	
	Class B, C	Flexible and Extra Flexible Cables							
		Class G	Class H	Class I	Battery Cable Class K	Welding Cable Class M	Locomotive Cable	B	L
YS8CLB	8	#8 (49 str)	#8 (133 str)	—	#8 (168/30)	#8 (420/34)	#8 (37/24)	0.44	1.09
YS5CLB	5	#6 (49 str)	#6 (133 str)	#6 (63/24)	#6 (266/30)	#6 (665/34)	#6 (61/24)	0.81	1.82
YS4CLB	4	#5 (49 str)	#5 (133 str)	#5 (84/24)	#5 (336/30)	#5 (836/34)	#5 (91/24)	0.81	1.84
YS3CLB	3	#4 (49 str)	#4 (133 str)	#4 (105/24)	#4 (420/30)	#4 (1064/34)	#4 (105/24)	0.88	1.96
YS2CLB	2	#3 (49 str)	#3 (133 str)	#3 (133/24)	#3 (532/30)	#3 (1323/24)	#3 (125/24)	0.87	1.98
YS1CLB	1	#2 (49 str)	#2 (133 str)	#2 (161/24)	#2 (665/30)	#2 (1666/34)	#2 (150/24)	0.87	1.97
YS25LB	1/0	#1 (133 str)	#1 (259 str)	#1 (210/24)	#1 (836/30)	#1 (2107/34)	#1 (225/24)	0.87	2.00
YS26LB	2/0	1/0 (133 str)	1/0 (259 str)	1/0 (266/24)	1/0 (1064/30)	1/0 (2646/34)	1/0 (275/24)	0.93	2.12
YS27LB	3/0	2/0 (133 str)	2/0 (259 str)	2/0 (342/24)	2/0 (1323/30)	2/0 (3325/34)	2/0 (325/24)	0.99	2.24
YS28LB	4/0	3/0 (133 str)	3/0 (259 str)	3/0 (418/24)	3/0 (1666/30)	—	3/0 (450/24)	0.98	2.26
YS29LB	250	4/0 (133 str)	4/0 (259 str)	—	—	—	—	1.04	2.40
YS30LB	300	250 kcmil (259 str)	250 kcmil (427 str)	4/0 (532/24)	4/0 (2107/30)	4/0 (5320/34)	4/0 (550/24)	1.04	2.41
YS32LB	400	300 kcmil (259 str)	300 kcmil (427 Str)	300 kcmil (735/24)	300 kcmil (2989/30)	300 kcmil (7581/34)	313.1 kcmil (775/24)	1.17	2.69
YS34LB	500	350 kcmil (259 str) 400 kcmil (259 str)	350 kcmil (427 str) 400 kcmil (427 str)	350 kcmil (882/24) 400 kcmil (980/24)	350 kcmil (3458/30)	350 kcmil (8806/34)	373.7 kcmil (925/24)	1.35	3.10
YS36LB	600	500 kcmil (259 str)	500 kcmil (427 str)	450 kcmil (1127/24)	450 kcmil (4522/30)	450 kcmil (11396/34)	444.4 kcmil (1100/24)	1.66	3.14
YS38LB	700	550 kcmil (427 str)	550 kcmil (703 str)	500 kcmil (1225/24) 550 kcmil (1372/24)	500 kcmil (5054/30)	500 kcmil (12691/34)	535.3 kcmil (1325/24)	1.85	3.14
YS39LB	750	600 kcmil (427 str)	—	—	—	550 kcmil (13664/34)	—	1.85	3.64
YS40LB	800	—	600 kcmil (703 str)	600 kcmil (1470/24)	—	600 kcmil (14945/34)	—	1.85	3.67
YS44LB	1000	750 kcmil (427 str)	750 kcmil (703 str)	650 kcmil (1596/24)	600 kcmil (5985/30)	—	777.7 kcmil (1925/24)	1.85	4.20

\* Contact BURNDY® for conductors not shown.

♦ For applications greater than 2000 Volts consult cable manufacturer for voltage stress relief instructions.

Note: All dimensions shown are for reference only.

## TYPE YS-LB (Continued)

### INSTALLATION TOOLING CHART



Catalog Number	Cable Size	Installation Tooling ▲				HYDRAULIC				Wire Strip Length
		Dieless (# of Crimps)	Die Index	Dieless (# of crimps)	Die Type	35 † Series	750 † Series	46 * † Series	60 Ton Series	
YS8CLB	8 AWG	-	49	Y8MRB1	DIE SET	U8CRT	U8CRT	U8CRT	-	7/16
	8 Flex		1013		NEST	UV8L	UV8L	UV8L	-	
YS5CLB ①	5 AWG	81K Series (1)	7	MR4C MY293 MY2911	DIE SET	U5CRT	U5CRT	U5CRT	-	7/8
	6 Flex		1014		NEST	U6CD1	U6CD1	U6CD1		
YS4CLB	4 AWG	644 Series (1) 444 Series (1) 81K Series (1)	8	MY293 MY2911	DIE SET	U4CRT	U4CRT	U4CRT	-	7/8
	5 Flex		1015		NEST	U4CD1	U4CD1	U4CD1		
YS3CLB	3 AWG	644 Series (1) 444 Series (1) 81K Series (1)	9	MY293 MY2911	DIE SET	U3CRT	U3CRT	U3CRT	-	15/16
	4 Flex		1016		NEST	U3CD1	U3CD1	U3CD1		
YS2CLB	2 AWG	644 Series (1) 444 Series (1) 81K Series (1)	10	MY293 MY2911	DIE SET	U2CRT	U2CRT	U2CRT	-	15/16
	3 Flex		1017		NEST	U2CD1	U2CD1	U2CD1		
YS1CLB	1 AWG	644 Series (1) 444 Series (1) 81K Series (1)	11	MY293 MY2911	DIE SET	U1CRT1	U1CRT1	U1CRT1	-	15/16
	2 Flex		1018		NEST	U1CD1	U1CD1	U1CD1		
YS25LB	1/0 AWG	644 Series (1) 444 Series (1) 81K Series (1)	12	MY293 MY2911	DIE SET	U25RT	U25RT	U25RT	-	15/16
	1 Flex		1019		NEST	U25D1	U25D1	U25D1		
YS26LB	2/0 AWG	644 Series (1) 444 Series (1) 81K Series (1)	13	MY293 MY2911	DIE SET	U26RT	U26RT	U26RT	-	1
	1/0 Flex		1020		NEST	U26D1	U26D1	U26D1		
YS27LB	3/0 AWG	644 Series (1) 444 Series (1) 81K Series (1)	14	MY293 MY2911	DIE SET	U27RT	U27RT	U27RT	-	1-1/16
	2/0 Flex		1021		NEST	U27D1	U27D1	U27D1		
YS28LB	4/0 AWG	644 Series (1) 444 Series (1) 81K Series (1)	15	MY293 MY2911	DIE SET	U28RT	U28RT	U28RT	-	1-1/16
	3/0 Flex		1022		NEST	-	U28D1	U28D1		
YS29LB	250 kcmil	644 Series (2) 444 Series (2) 81K Series (2)	16	MY293 MY2911	DIE SET	U29RT	U29RT	U29RT	-	1-1/16
	4/0 Flex		1023		NEST	-	U29D1	U29D1		
YS30LB	300 kcmil	644 Series (2) 444 Series (2) 81K Series (2)	17	-	DIE SET	U30RT	U30RT	U30RT	-	1-1/8
	4/0-250 Flex		1024		NEST	-	U30D1	U30D1		

† Use Y35P3 adaptor with Y34PR indenter.

\* Use PUADP1 adaptor with U dies in 46 Series

▲ See Tooling section in this catalog for complete tool and die listings.

① Not color coded.

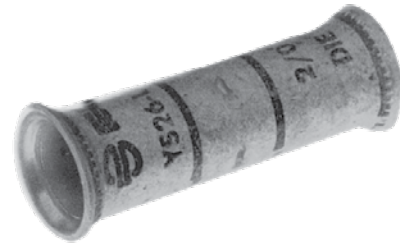
◆ For applications greater than 2000 Volts consult cable manufacturer for voltage stress relief instructions.

Note: All dimensions shown are for reference only.



## TYPE YS-LB (Continued)

### INSTALLATION TOOLING CHART



Catalog Number	Cable Size	Installation Tooling ▲				HYDRAULIC				Wire Strip Length
		Dieless (# of Crimps)	Die Index	Dieless (# of crimps)	Die Type	35 † Series	750 † Series	46 * † Series	60 Ton Series	
YS32LB	400 kcmil	644 Series (2) 444 Series (2) 81K Series (2)	19	-	DIE SET	U32RT	U32RT	U32RT	L32RT	1-1/4
	300 Flex		1026		NEST INDENTOR	- -	U32D-1 Y34PR-2	U32D-1 Y34PR-2	- -	
YS34LB	500 kcmil		20	-	DIE SET	-	U34RT	U34RT	L34RT	1-7/16
	350 Flex		1027		NEST INDENTOR	- -	U34D-1 Y34PR-2	U34D-1 Y34PR-2	- -	
YS36LB	600 kcmil		22	-	DIE SET	-	U36RT	U36RT	L36RT	1-3/4
	500 Flex		1028		NEST INDENTOR	- -	- -	P36D P48PR-1	- -	
YS38LB	700 kcmil		400	-	DIE SET	U38RT	U38RT	U38RT	-	1-15/16
	550 Flex		1029		NEST INDENTOR	- -	- -	P38D P48PR-1	- -	
YS39LB	750 kcmil		24	-	DIE SET	-	U39RT	P39RT	L39RT	1-15/16
	600 Flex		1030		NEST INDENTOR	- -	- -	P39D P48PR-1	- -	
YS40LB	800 kcmil		25	-	DIE SET	-	-	P40RT	L40RT	1-15/16
	600 Flex		1031		NEST INDENTOR	- -	- -	P40D P48PR-1	- -	
YS44LB	1000 kcmil		27	-	DIE SET	-	-	P44RT	L44RT	1-15/16
	750 Flex		1022		NEST INDENTOR	- -	- -	P44D P48PR-1	- -	

† Use Y35P3 adaptor with Y34PR indenter.

\* Use PUADP1 adaptor with U dies in 46 Series

▲ See Tooling section in this catalog for complete tool and die listings.

Ⓞ Not color coded.

◆ For applications greater than 2000 Volts consult cable manufacturer for voltage stress relief instructions.

**Note:** All dimensions shown are for reference only.

## TYPES YS-T, YSP-T

### HYLINK™ High Voltage, Tapered Ends

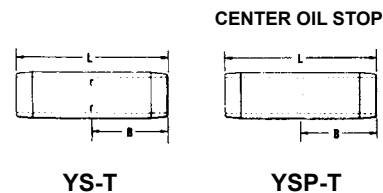
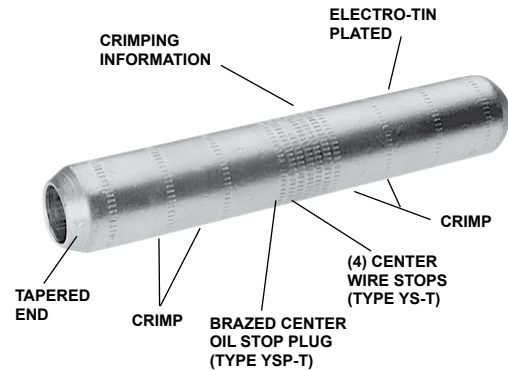
UL Listed 90° C, Up to 35 kV ♦



Types YS-T and YSP-T seamless high conductivity copper electro-tin plated compression HYLINK™ high voltage splices with standard barrel and tapered ends are ideally suited for higher voltage applications from 5 kV through 35 kV.

### Features & Benefits

- Copper seamless barrel is designed with tapered ends per EEI Standard TD160, indicating use on voltages 5kV through 35kV; this aids in preventing corona emission and simplifies taping for lower installation cost
- Barrel also features an internal chamfer at the wire entry to ensure smooth insertion of the wire, preventing possible damage of the wire strands during insertion
- Electro-tin plated unless otherwise specified to reduce galvanic corrosion (bimetallic) and resist corrosive elements
- Short/standard length barrel is recommended for installations with limited space requirements
- Type YS-T barrel has center stop indentations used to indicate when wire is fully inserted into each side of the barrel
- Type YSP-T barrel has a center plug permanently brazed in place; this plug prevents oil within oil filled conductor from passing through the splice connector and is also an indication when the wire is fully inserted into each side of the barrel
- Connectors are clearly marked with color coding to ensure proper die and installation tooling is selected
- BURNDY certifies its products using the BURNDY Engineered System and select other crimp tool manufacturers in accordance with one or more of the UL categories in order to obtain a UL Listing
- Terminals and splices accommodating code wire: Accommodates Code Class B (Concentric, Compressed, Compact) and Class C wire



### Accessories

- Hardware - Section F
- PENETROX™ Oxide Inhibitor - Section F
- Heat and Cold Shrink Tubing - Section D
- WIREMIKE™ Wire Micrometer - Section F
- Wire Management (Cable Ties) - Section G

Catalog Number		Code Conductors	Dimensions		Installation Tooling- Nest/Indentor ▲					Wire Strip Length
					Y34B Y34PR Indentor	35, 750 Series, Y34PR Indentor Y35P3 Adaptor	35, 750, 46° Series Die Number (# of crimps per end)	Die Index ▲	No. of Indent	
YS-T	YSP-T		B	L	Nest Die	Nest Die				
YS6CT	—	6 Str.	0.90	2.16	B6CD	U6CD1	U5CRT (2)	7	1	15/16
YS4CT	YSP4CT	4 Str.	0.90	2.16	B4CD	U4CD1	U4CRT (2)	8	1	15/16
YS2CT	YSP2CT	2 Str.	0.98	2.34	B2CD	U2D1	U2CRT (2)	10	1	1
YS1CT	YSP1CT	1 Str.	0.97	2.31	B1CD	U1D1	U1CRT1 (2)	11	1	1
YS25T	YSP25T	1/0 Str.	0.98	2.35	B25D	U25D1	U25RT (2)	12	1	1-3/32
YS26T	YSP26T	2/0 Str.	1.04	2.47	B26D	U26D1	U26RT (2)	13	1	1-3/32
YS28T	YSP28T	4/0 Str.	1.13	2.67	B28D	U28D1	U28RT (2)	15	1	1-3/16
YS29T	YSP29T	250 kcmil	1.21	2.85	B29D	U29D1	U29RT (2)	16	1	1-3/32
YS30T	YSP30T	300 kcmil	1.22	2.87	B30D	U30D1	U30RT (4)	17	2	1-5/16
YS31T	YSP31T	350 kcmil	1.32	3.09	B31D	U31D1	U31RT (4)	18	2	1-3/5
YS34T	YSP34T	500 kcmil	1.68	3.86	No Die Needed	U34D1	U34RT (4)	20	2	1-3/4
YS39T	YSP39T	750 kcmil	2.00	4.60	—	—	U39RT (4)	24	2	2-1/8

\* Use adapter PUADP1 with U Dies in 46 Series. 46 Series uses the same nest indentor and adapter as the 35 and 750 Series, but with the PUADP1 adapter.

\*\* A 0.06 radius at each end is used for sizes 6-27.

■ The maximum size for the 35 Series is 400 kcmil.

▲ See tooling section of this catalog for complete tool and die listings.

♦ For applications greater than 2000 Volts consult cable manufacturer for voltage stress relief instructions.

Note: All dimensions shown are for reference only.

## TYPE YS-FXB

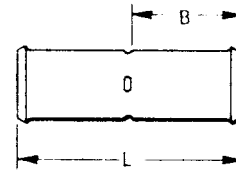
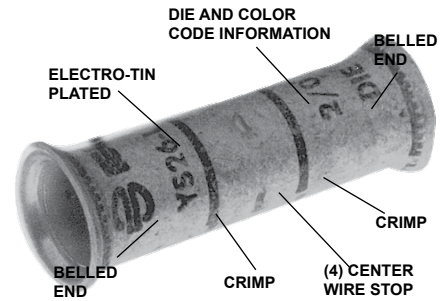
### HYLINK™ Splice, Belled Ends

UL Listed 90° C, Up to 35 kV ♦



### Features & Benefits

- Copper seamless barrel is designed with a “belled” end opening at the wire entry to ensure smooth insertion of highly flexible stranded wire, preventing damaging of the wire strands during insertion
- Electro-tin plated unless otherwise specified to reduce galvanic corrosion (bimetallic) and resist corrosive elements
- Long barrel allows for an increased number of crimps which will increase the mechanical strength of the connection
- Barrel has center stop indentations used to indicate when wire is fully inserted into each side of the barrel
- Connectors are clearly marked with color coding to ensure proper die and installation tooling is selected
- BURNDY certifies its products using the BURNDY Engineered System and select other crimp tool manufacturers in accordance with one or more of the UL categories in order to obtain a UL Listing



### Accessories

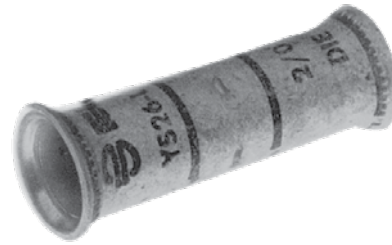
- Hardware - Section F
- PENETROX™ Oxide Inhibitor - Section F
- Heat and Cold Shrink Tubing - Section D
- WIREMIKE™ Wire Micrometer - Section F
- Wire Management (Cable Ties) - Section G



# Compression Connections

Copper — Flex  
Belled Ends, Long Barrel Splice

## TYPE YS-FXB (Continued)



Catalog Number	Conductor		Dimensions		Installation Tooling					Cable Strip Length
	Flexible Cable Code AWG	*** MM <sup>2</sup>	L (mm)	B (mm)	Dieless (# of crimps/end)	Mechanical	35, 750, 46* Series			
						Y1MRTC	Embossed Die Index	Color Code	Die Number (# of crimps/end)	
YS8CFXB	#8 AWG G,H,I,K,M DLO (37/24) #8 AWG, #6 SOL, #8 SOL	10	1.99 (51)	0.90 (23)	81K Series (1)	Y1MR (2)	49	Red	U8CRT (2)	1" (25)
YSV6CFXB	#6 AWG G,H,I,K,M DLO (61/24) #6 AWG	† 16	2.62 (67)	1.22 (31)		Y1MR (2)	7	Blue	U5CRT (2)	1-5/16" (33)
YSV4CFXB	#4 AWG G,H,I,K,M DLO (105/24) #4 AWG	—	2.62 (67)	1.22 (31)		Y1MR (4)	8	Gray	U4CRT (2)	1-5/16" (33)
YSV2CFXB	#2 AWG G,H,I,K,M DLO (150/24) #2 AWG	35	2.89 (73)	1.35 (34)		Y1MR (4)	10	Brown	U2CRT (2)	1-7/16" (37)
YSV1CFXB	#1 AWG G,H,I,K,M DLO (225/24) #1 AWG	—	3.18 (81)	1.50 (38)		—	11	Green	U1CRT-1 (2)	1-9/16" (40)
YSV25FXB	1/0 AWG G,H,I,K,M DLO (275/24) 1/0 AWG	50	3.18 (81)	1.50 (38)		—	12	Pink	U25RT (2)	1-9/16" (40)
YSV26FXB	2/0 AWG G,H,I,K,M DLO (325/24) 2/0 AWG	70	3.44 (87)	1.63 (41)		—	13	Black	U26RT (2)	1-11/16" (43)
YSV27FXB	3/0 AWG G,H,I,K,M DLO (450/24) 3/0 AWG	95	3.46 (88)	1.64 (42)		—	14	Orange	U27RT (2)	1-11/16" (43)
YSV28FXB	4/0 AWG G,H,I,K,M DLO (550/24) 4/0 AWG	† 120	3.72 (94)	1.77 (45)	81K Series (2)	—	15	Purple	U28RT (2)	1-7/8" (48)
YS30FXB	250 kcmil G,H	—	4.51 (115)	2.16 (55)		—	16	Yellow	U29RT (2)	2-1/4" (57)
YS31FXB	250 kcmil I,K,M DLO 262 (650/24)	150	4.54 (115)	2.18 (55)		—	17	White	U30RT (4)	2-1/4" (57)
YS32FXB	300 kcmil G,H,I,K,M DLO 313 (775/24)	185	4.82 (122)	2.32 (59)		—	18	Red	U31RT (4)	2-7/16" (62)
YS34FXB	350 kcmil G,H,I,K,M DLO 373 (925/24)	240	5.14 (131)	2.48 (63)		—	19	Blue	U32RT (4)	2-9/16" (65)
YS36-FXB	500 kcmil G,H DLO 444 (110/24)	300	6.09 (155)	2.95 (75)		—	20	Brown	U34RT (4)	3-1/16" (79)
YS38FXB	500 kcmil H,I,K 550 kcmil G,H,I DLO 535 (1325/24)	—	6.34 (161)	3.08 (78)	81K Series (3)	—	L99	Pink	U38XRT (4)	3-3/16" (81)
YS40FXB	650 kcmil G DLO 646 (1600/24)	400	6.66 (169)	3.24 (82)		—	24	Black	U39RT (4)	3-5/16" (84)
YS44FXB	750 kcmil G,H DLO 777 (1925/24)	500	6.84 (174)	3.33 (85)		—	L115	Yellow	U44XRT (4) †P44XRT (4)	3-7/16" (87)

\* Use PUADP1 adapter with U dies in 46 Series.

† P-RT dies sets are for use with 46 Series only.

\*\*\* The MM<sup>2</sup> conductor sizes listed are the recommendations for Class 5 conductor.

‡ 16 MM<sup>2</sup> and 120 MM<sup>2</sup> referenced are for both Class 2 and Class 5

■ The maximum size for the 35 Series is 373.7 kcmil.

▲ See tooling section of this catalog for complete tool and die listings.

◆ For applications greater than 2000 Volts consult cable manufacturer for voltage stress relief instructions.

**Note:** All dimensions shown are for reference only. Measurements in brackets [ ] are in metric dimensions.