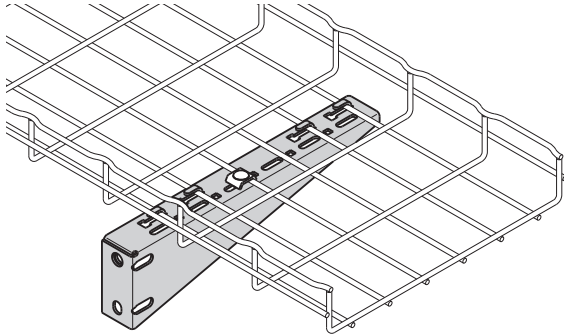


## Shelf Brackets

- Heavy-duty support bracket
- For use with 6" (150mm) to 24" (600mm) wide trays
- Built-in tab for hold down
- Optional hardware (FTSCH) sold separately
- Finishes \_\_: **GLV**, HDG, SS6

Part Number	Use With Tray Width		Qty./Box	Wt./Pc.	
	in.	(mm)		lbs.	(kg)
<b>FTB06CS</b> __	6"	(150)	1	0.5	(0.22)
<b>FTB08CS</b> __	8"	(200)	1	0.6	(0.27)
<b>FTB12CS</b> __	12"	(300)	1	1.2	(0.54)
<b>FTB16CS</b> __	16"	(400)	1	1.7	(0.77)
<b>FTB18CS</b> __	18"	(450)	1	1.9	(0.86)
<b>FTB20CS</b> __	20"	(500)	1	2.6	(1.18)
<b>FTB24CS</b> __	24"	(600)	1	3.2	(1.45)

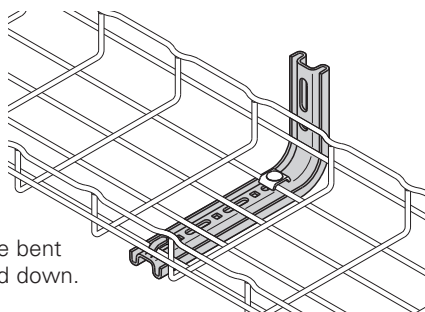


FTB24CS shown

## L Brackets

- Installs tray to wall cleanly
- Built-in tab for hold down (not available in stainless steel)
- For use with 4" (100mm) to 24" (600mm) wide trays
- Use with pedestal clamp in raised floor applications
- Optional hardware (FTSCH) sold separately
- Finishes \_\_: **EG**, HD, BLE, 316S

Part Number	Use With Tray Width		Qty./Box	Wt./Pc.	
	in.	(mm)		lbs.	(kg)
<b>4 L BRKT</b> __	4"	(150)	1	0.6	(0.27)
<b>8 L BRKT</b> __	6"	(150)	1	0.8	(0.36)
	8"	(200)			
<b>12 L BRKT</b> __	12"	(300)	1	1.3	(0.59)
<b>16 L BRKT</b> __	16"	(400)	1	1.4	(0.63)
	18"	(450)			
<b>20 L BRKT</b> __	20"	(500)	1	2.0	(0.91)
	24"	(600)			
<b>24 L BRKT</b> __	24"	(600)	1	2.3	(1.04)



Tab can be bent over for hold down.



12 L BRKT

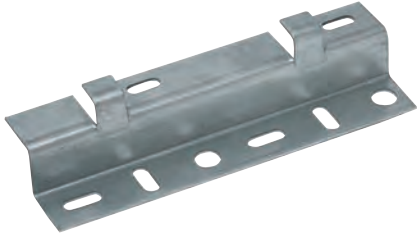
See page D-3 for finish information

# FLEXTRAY™ Wire Basket - Wall Support Methods

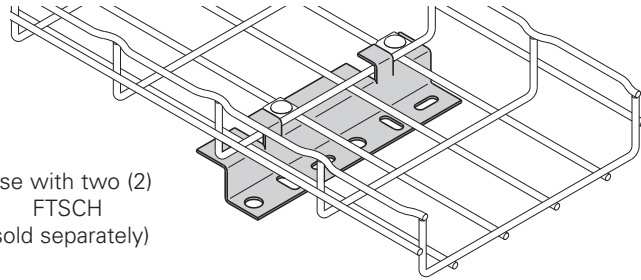
## Z Brackets

Part Number	Description	Qty./Box	Wt./Box lbs. (kg)
Z BRKT__	Z Bracket	25	14.0 (6.35)

- Used for horizontal and/or vertical mounting
- 8" (200mm) wide bracket for use with 4" (100mm) to 32" (800mm) wide trays
- Can be used to offset trays from floor
- Can be used to terminate tray run at wall
- Multiple brackets can be used for wider tray widths
- Finishes \_\_: **GS**, BLE



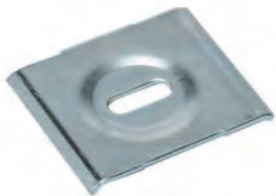
Use with two (2) FTSCH (sold separately)



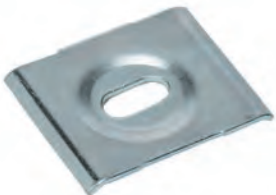
## Hold Down Plate

Part Number	Description	Qty./Box	Wt./Box lbs. (kg)
SUPT WASHER__	.28" x .70" (7.1mm x 17.8mm)	50	4.7 (2.13)
FTA6HD__	.40" x .70" (10.1mm x 17.8mm)	50	3.5 (1.59)

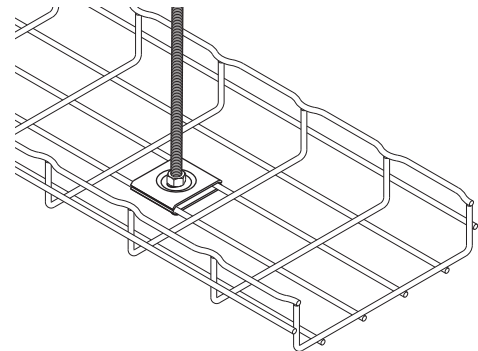
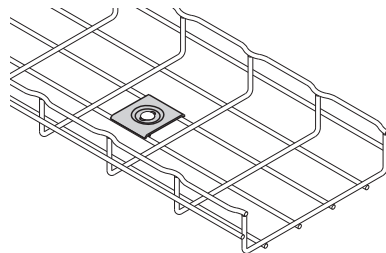
- Easy way to mount 4" (100mm) wide tray for raceway run.
- Use 1/4" screws to attach SUPT WASHER to your specific wall/stud application (hardware sold separately).
- FTA6HD can be used in pairs to create a center-hung support using 3/8" rod.
- To protect cables use threaded rod protector (page D-20).
- To complete 3/8" center hanger assembly use:
  - 2 - FTA6HD
  - 2 - HN 3/8"-16 hex nuts
- Finish: **ZN**, SS6



SUPT WASHER



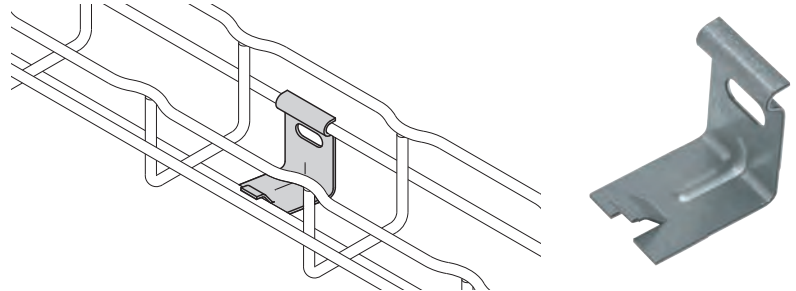
FTA6HD



## Attachment Clips

- Wall attachment for 2" (50mm) wide tray only (FT2X2X10)
- Low-profile appearance
- Built-in tab to hold down tray
- Can also be used with 2" (50mm) Center Hanger (see page D-19)
- Hardware sold separately
- Finishes \_\_: **GS**, BLE

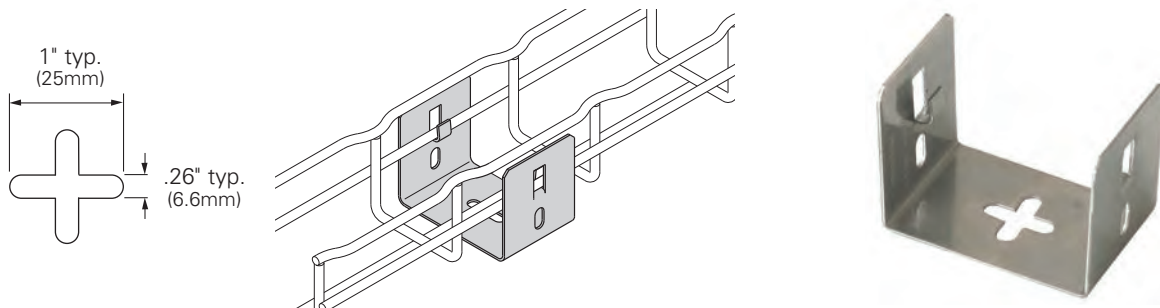
Part Number	Description	Qty./Box	Wt./Box lbs. (kg)
<b>ATTACHMENT CLP__</b>	Support for FT2x2x10	50	3.4 (1.54)



## Mounting Bracket

- Designed to support FT2X2X10 FLEXTRAY
- Click tabs for FLEXTRAY attachment
- Use 1/4" hardware and washer (not included) to mount bracket
- Finishes \_\_: **SS6**

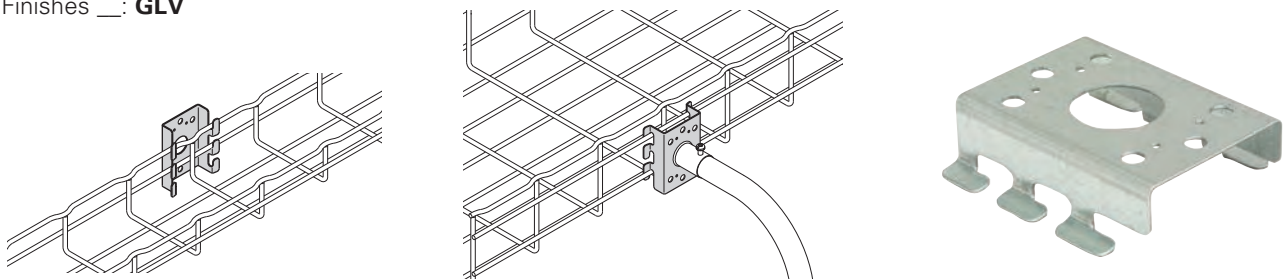
Part Number	Description	Qty./Box	Wt./Box lbs. (kg)
<b>FTB2UB__</b>	Light Duty Wall/Rack Bracket	10	2.1 (0.95)



## Wall Supports

- Used to attach 2" (50mm) or 4" (100mm) wide trays to walls, struts or cabinets
- Use for raceway mounting
- Mount to metal framing for vertical support
- Tabs are built in for tray hold down
- Mount to side rail for electrical box connection
- Finishes \_\_: **GLV**

Part Number	Description	Qty./Box	Wt./Box lbs. (kg)
<b>FTA050CC__</b>	Wall Support Bracket	1	0.8 (0.36)



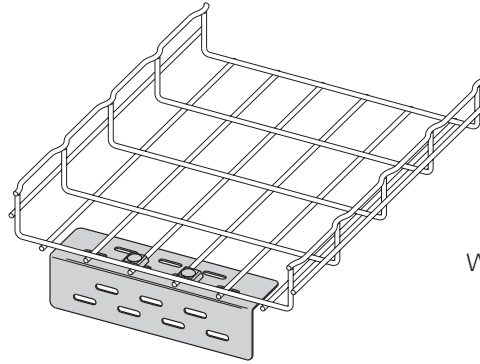
See page D-3 for finish information

# FLEXTRAY™ Wire Basket - Wall Support Methods

## Wall Termination Kit

Part Number	Length in. (mm)	Qty./Box	Wt./Box lbs. (kg)
FTA9WTK__	9" (228.6)	1	1.3 (0.59)

- Kit includes all hardware necessary to support FLEXTRAY when terminated at a wall
- Mount slotted angle to wall with up to 3/8" hardware (not included)
- Finishes \_\_: **ZN**, FB, SS6



Wall Termination Kit includes:

- 1 - Angle with Slots
- 2 - FTSCH

## Wall Mount Kit

Part Number	Length in. (mm)	Qty./Box	Wt./Box lbs. (kg)
WB48WMK__	8" (203.2)	1	0.76 (0.35)
WB1224WMK__	12" (304.8)	1	1.22 (0.55)

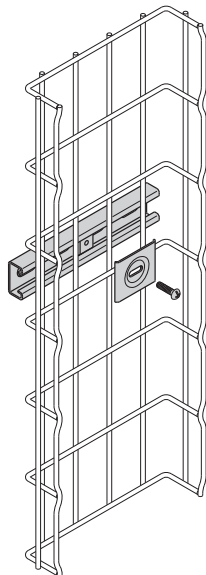
- Kit includes all components necessary to mount FLEXTRAY to a wall horizontally or vertically
- Mount strut to wall with up to 1/2" hardware (not included)
- Finish: Channel - **GLV**  
Hardware - **ZN**  
Available in SS6



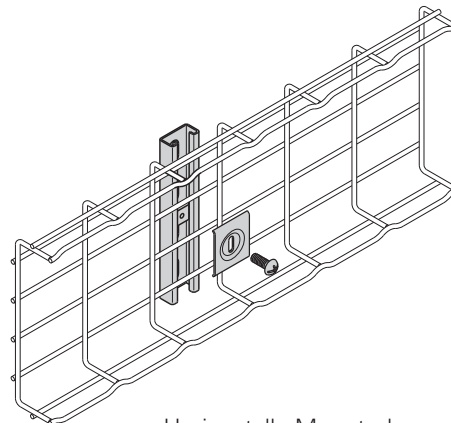
WB1224WMK shown

Wall Mount Kit includes:

WB48WMK	WB1224WMK	
1	1	B54SH Strut
1	2	SUPT WASHER Hold Downs
1	2	1/4"-20 x 1" Slotted Head Screw
1	2	N224WO Channel Nut



Vertically Mounted



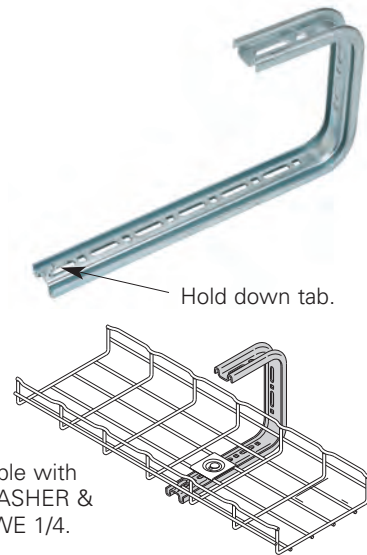
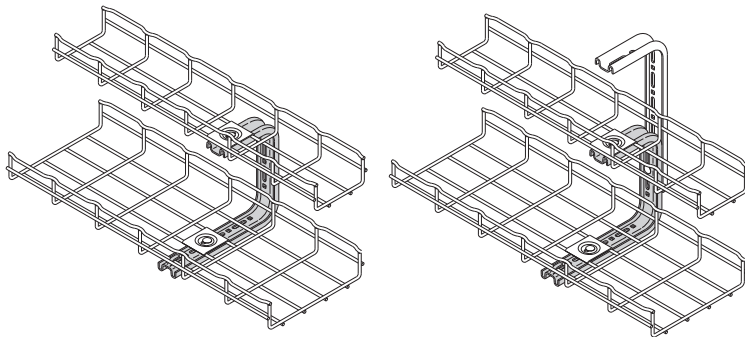
Horizontally Mounted

See page D-3 for finish information

## C Brackets

- Tab can be used for hold down (stainless steel will not have these tabs)
- For use with 4" (100mm) to 12" (300mm) wide trays
- C bracket attaches to hard ceiling types
- All brackets are 7 7/8" (200mm) tall
- Cables can be side loaded
- L brackets (page D-26) and C brackets can be combined for layered tray runs
- Finishes \_\_: **EG**, BLE, HD

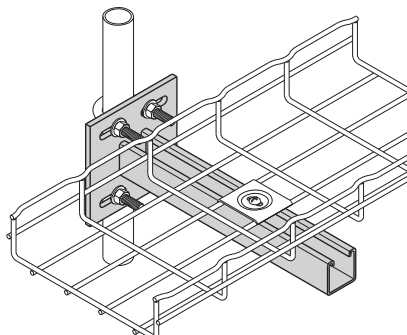
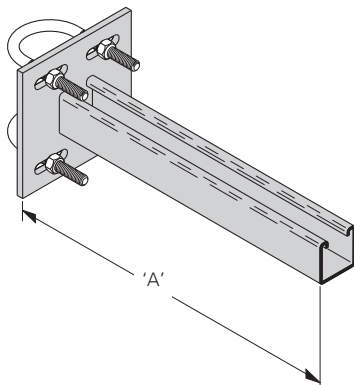
Part Number	Tray Width - Up To in. (mm)	Qty./Box	Wt./Box lbs. (kg)
<b>4 C BRKT__</b>	4" (100)	1	1.2 (0.54)
<b>8 C BRKT__</b>	8" (200)	1	1.4 (0.63)
<b>12 C BRKT__</b>	12" (300)	1	1.9 (0.86)



- Under floor support bracket provides rugged support for FLEXTRAY System from access floor post.
- To complete the installation, the following hardware must be ordered separately.
  - (2) - B501 U-Bolts
  - (1) - SUPT WASHER Hold Down
  - (1) - 1/4"-20 x 1" Slotted Head Screw
  - (1) - N224WO Channel Nut
- Finish: **ZN**

## Under Floor Support Bracket

Part Number	'A' in. (mm)	Box Quantity	Wt. Per Each lbs. (kg)
<b>B409UF-12</b>	12" (300)	1	3.6 (1.63)
<b>B409UF-18</b>	18" (450)	1	4.5 (2.04)
<b>B409UF-21</b>	21" (533)	1	5.4 (2.45)



See page D-3 for finish information