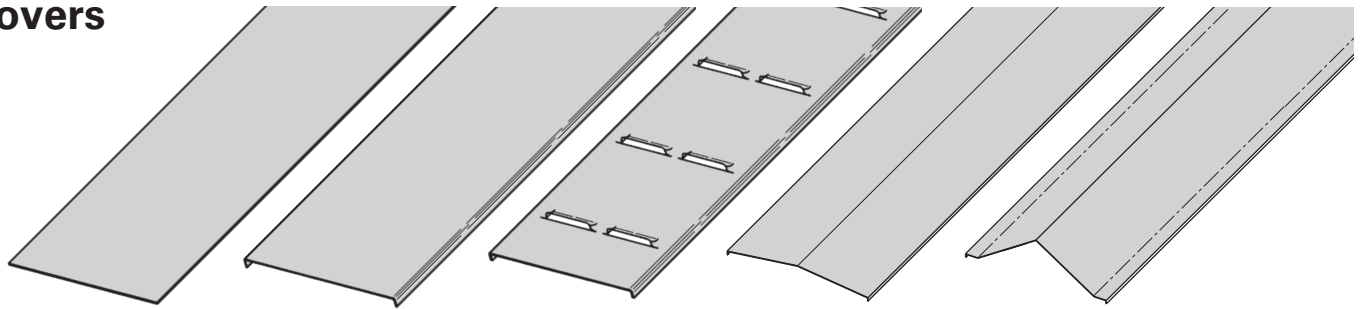


Covers



Solid Non-Flanged

Solid Flanged

Ventilated Flanged

Peaked Flanged

2 to 3 Pitch Peaked Flanged
(See page APP-4)

A full range of covers is available for straight sections and fittings.

Solid covers should be used when maximum enclosure of the cable is desired and no accumulation of heat is expected.

Ventilated covers provide an overhead cable shield yet allow heat to escape.

We recommends that covers be placed on vertical cable tray runs to a height of 6 ft. (1.83 m) to 8 ft. (2.44 m) above the floor to isolate both cables and personnel. **Flanged covers** have a 1/2 in. (13 mm) flange. Cover clamps are not included with the cover and must be ordered separately. All **peaked covers** are flanged. Standard peaked covers have 1/2" peak. Special purpose peaked covers, having a 2 to 3 pitch, provide additional slope and material thickness. The 2 to 3 pitch fitting covers are of multiple piece, welded construction.

Steel Cover Part Numbering

Example: **80 2 SS4 - 24 - 144**

Cover Type

- 80 = Solid
- 81 = Ventilated
- 82 = Peaked

Detail

- 2 = Flanged Stainless Steel (all fittings)
- 3 = Flanged Steel (all straight sections)
- 4 = Non-Flanged Stainless Steel (80 & 81 type only)

Material

- SS4 = 304 Stainless Steel
- SS6 = 316 Stainless Steel

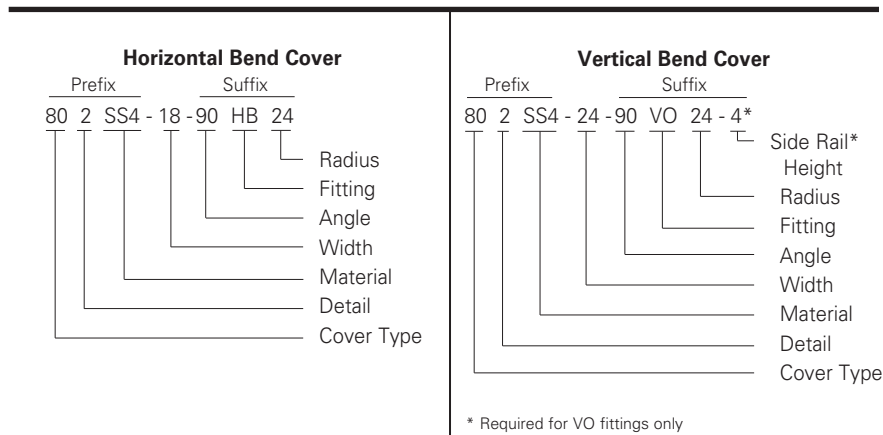
Tray Width

- 06 = 6"
- 09 = 9"
- 12 = 12"
- 18 = 18"
- 24 = 24"
- 30 = 30"
- 36 = 36"

Item Description

- For Straight Section Cover:
- 144 = 12 ft. (3.66 m)
 - 120 = 10 ft. (3.05 m)
 - 72 = 6 ft. (1.83 m)
 - 60 = 5 ft. (1.52 m)
- For fitting covers: Insert suffix of fitting to be covered. See example below.

Examples of Catalog Numbers for Fitting Covers:



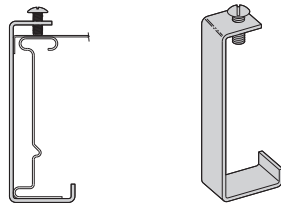
● Green = Fastest shipped items ● Black = Normal lead-time items ● Red = Normally long lead-time items

All dimensions in parentheses are millimeters unless otherwise specified.

Series 3 & 4 Stainless Steel - Accessories

Standard Cover Clamp

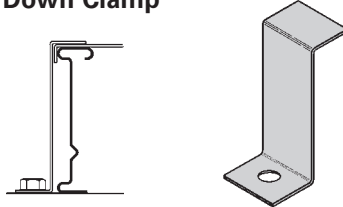
- For indoor service only.
- Screw included.
- Sold per piece.



Tray Type	Catalog No.	Side Rail Height	
		in.	(mm)
Stainless Steel	9SS6-9014	4	(101)
	9SS6-9015	5	(127)
	9SS6-9016	6	(152)

Combination Cover and Hold Down Clamp

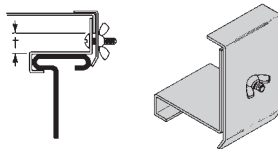
- Sold per piece.
- For indoor service only.
- (*) Insert **SS4** or **SS6**



Tray Type	Catalog No.	Side Rail Height	
		in.	(mm)
Stainless Steel	9(*)-9043	4	(101)
	9(*)-9053	5	(127)
	9(*)-9063	6	(152)

Raised Cover Clamp

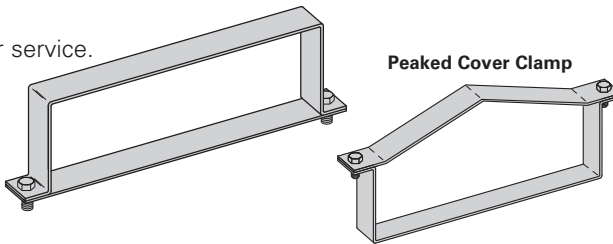
- For indoor service only.
- For use with flanged covers only.
- † Specify gap of 1", 2", 3" or 4".
- (*) Insert **SS4** or **SS6**



Tray Type	Catalog No.	Tray Type
● 9(*)-9115-†	Series 3 & 4 Steel Straight Section	
● 9(*)-910†	All Steel Fittings (Also Series 1 Steel Straight Sections)	

Heavy Duty Cover Clamp

- Recommended for outdoor service.
- (‡) Insert tray width
- † Add P to Catalog No. for peaked cover clamp.
- (*) Insert **SS4** or **SS6**



Catalog No.	Side Rail Height	
	in.	mm
9(*)-(‡)-9044†	4	(101)
9(*)-(‡)-9054†	5	(127)
9(*)-(‡)-9064†	6	(152)

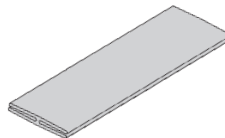
Quantity of Standard Cover Clamps Required

Notes:
When using the Heavy Duty Cover Clamp, only on-half the number of clamps stated above is required.
Additional clamps may be necessary in extreme wind applications.

Straight Section 60" or 72"	4 pcs.
Straight Section 120" or 144"	6 pcs.
Horizontal/Vertical Bends	4 pcs.
Tees	6 pcs.
Crosses	8 pcs.

Cover Joint Strip

- Used to join covers
- Plastic
- (‡) Insert tray width



Catalog No.
● 99-9980-(‡)

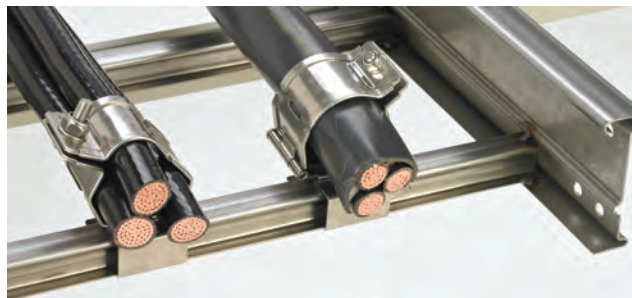
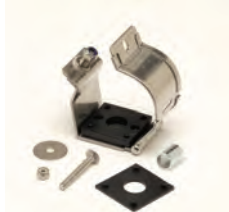
Cable Cleats

(see pages O-1 thru O-5) Standard

Trefoil Cable Cleats



Single Cable Cleats



● Green = Fastest shipped items ● Black = Normal lead-time items ● Red = Normally long lead-time items

All dimensions in parentheses are millimeters unless otherwise specified.