



# FIRED <sup>UP</sup> KILNS

*and pottery supplies*

## CATALOGUE



firedupkilns.com.au  
03 7013 9025  
hello@firedupkilns.com.au

20 Helen Street  
Heidelberg West Vic 3081  
Australia

# CONTENTS

## 03 Kilns

## 12 Kiln Furniture

## 17 Kiln Accessories

## 20 Cones

## 21 Pottery Wheels

## 24 Pottery Equipment

## 26 Pottery Tools

## 30 Clay, Glaze & Stains

## 42 Extruders

## 43 Slab Rollers

## 44 Mills

## 45 Refractory Materials

## 46 Gifts

## 47 Other

Top Loading	03
Front Loading	08
Raku	11

Kiln Shelves	12
Props / Stackers & Setters	14
Bead & Pendant Racks	15
Furniture Sets	16

Elements	17
Thermocouples & Controllers	18
Ventmasters & Spare Parts	19

Orton Pyrometric Cones	20
------------------------	----

Cowley Potters Wheel	21
Fired Up PW-DC Pottery Wheels	22
Shimpo Pottery Wheels	23

Sieves, Tongs, Bats, Banding Wheels & more	24
---	----

Pottery Tools, Sponges, Trimming Tools & more	26
--	----

Clay & Slip	30
Mid-Fire Glaze	31
Amaco	32
Stoneware, Raku & Earthenware	33
Underglaze	34
Stains	40
Lustres	41

Handheld, Wall Mounted & Accessories	42
---	----

Table Top	43
Freestanding	43

Peter Pugger & Fired Up Pug Mills	44
Ball Mills	44

Ceramic Fire, Element Wire	45
Kiln Bungs, Kiln Bricks, Miscellaneous	

Gift Vouchers	46
Starter Sets	46

Order Form	47
Contact Us	48

# TOP LOADING KILNS

## PLUG & FIRE

The Plug & Fire is as easy as the name suggests, just plug it in, to begin firing your small pots, jewellery, or test tiles. It arrives with everything you need (controller & furniture), you just plug it into a normal power-point and start firing. Made in the USA by our partners at L&L Kilns.

### KEY FEATURES

- This kiln can fire to Cone 10 on a standard power point
- Extra-insulated sides with 6cm K23 bricks and 2.5cm of backup insulation; Top & Bottom are 7.5cm K23 bricks
- Kiln plugs into a separate control panel with power and thermocouple wire jack
- Door safety switch shuts off power to the elements when the door is opened
- Hard ceramic element channels
- Arrives in 2 boxes with clear assembly instructions

The GENESIS 2.0 Mini Touchscreen controller includes a touchscreen interface and WIFI connectivity. The intuitive interface is easy to use and understand. A free phone app allows you to monitor your kiln remotely.



	Litres (approx)	Power	Internal Dimensions mm	Supply	Price
Plug & Fire 10	13	2.4kw	Depth 230 Width 203	10 Amps Standard Power Outlet	\$2,690

# TOP LOADING KILNS

## FIRED UP 13

Compact, reliable, and beautifully designed, the Fired Up 13 is the perfect small kiln.

Measuring just 52cm x 60cm x 67cm externally and weighing 60kg, the Fired Up 13 is easy to position in your workspace. Its 10 Amp draw means it runs on a standard household power point, no special wiring required.

Handcrafted for Fired Up Kilns by our expert partners in Jiangxi Province—China’s legendary porcelain-making region with over a thousand years of ceramic heritage—this kiln brings tradition and modern performance together.



### KEY FEATURES

- This kiln can fire to Cone 10 on a standard power point
- Lockable wheels for easy movement and storage
- Optional 3 OBSiC shelves & 9 OBSiC props can be added
- Door safety switch shuts off power to the elements when the door is opened

	Litres (approx)	Power	Internal Dimensions mm	Supply	Price
Fired Up 13	13	2.2kw	Depth 270 Width 250	10 Amps Single Phase Standard Power Point	\$2,490

# TOP LOADING KILNS CRAFT RANGE

**AFFORDABLE**  
DURABLE & RELIABLE

Introducing the Craft Kiln Range, a superior product with over 40 years of proven excellence in the market. Originating from the Netherlands, these meticulously crafted kilns have become synonymous with quality and reliability. Every Craft Kiln in our range is hand-built, ensuring the highest level of precision and attention to detail.

## KEY FEATURES

- Casing made of high-quality stainless steel
- 25mm backup insulation blanket for optimal power saving
- Additional insulation plates in bottom and lid (only in the Craft *Smart* 60)
- Elements made of sustainable and durable kanthal wire
- Safe and solid connection to your controller
- Unique sturdy frame with dual heights (10cm higher or lower)
- Fitted with castors for easy movement
- S Thermocouple
- 1320°C max temp (1300°C Craft *Smart* 60)
- Comes with the Stafford ST215C Universal Controller with up to 32 programs, each with up to 32 ramp/soak segments



Craft 25	Craft 50	Craft <i>Smart</i> 60	Craft 70	Craft 100	Craft 120	Craft 150	Craft 200
25	50	60	70	100	120	150	200
2.4kw	3.6kw	4.0kw	5.8kw	6.7kw	7.2kw	8.4kw	17kw
D: 330 W: 280	D: 390 W: 395	D: 395 W: 430	D: 450 W: 430	D: 450 W: 525	D: 570 W: 525	D: 680 W: 525	D: 570 W: 650
10 Amps Standard Power Outlet	20 Amps Single Phase	20 Amps Single Phase	32 Amps Single Phase	32 Amps Single Phase	32 Amps Single Phase	36 Ampson a 40 Amp Circuit	32 Amps 3 Phase
				3 Phase Option Available			
\$3,790	\$4,690	\$5,690	\$5,890	\$6,790	\$7,190	\$7,790	\$8,690

# TOP LOADING KILNS NABERTHERM RANGE

MADE IN  
GERMANY

Handcrafted in Germany, Nabertherm kilns deliver exceptional performance for hobbyists, workshops, and professionals. Designed for ceramic firing with temperatures up to 1300°C, they cover all firing processes from bisque to glaze. With intuitive digital controls and user-friendly operation, these kilns are perfect for every skill level.



## KEY FEATURES

- **Advanced Insulation:** Three-layer insulation with light refractory bricks and energy-saving backing insulation.
- **Premium Heating Elements:** Designed with optimum wire gauge and length for extended lifespan.
- **Precise Temperature Control:** Rapid switching cycles ensure consistent and accurate firing results.
- **Sleek Design & Lightweight Build:** Attractive, practical, and easy to handle.



	Litres (approx)	Power	Internal Dimensions mm	Supply	Price
<b>Top 45</b>	45	2.9kw	Depth 340 Width 410	20 Amps Single Phase	<b>\$5,990</b>
<b>Top 60</b>	60	3.6kw	Depth 460 Width 410	20 Amps Single Phase	<b>\$6,990</b>

# TOP LOADING KILNS POTTERYCRAFTS RANGE

BUILT IN THE  
HOME OF POTTERY  
**STOKE ON  
TRENT**  
IN THE UK

Manufactured in the UK, our PotteryCrafts toploaders range from 30 to 450 litres, come standard with Type R Thermocouples and are rated to 1300c. These kilns provide the durability and performance needed for a wide range of pottery techniques, ensuring consistent and reliable results every time.

## KEY FEATURES

- CERA-10 controller: Advanced software for efficiency, ease of use, and safety
- Stainless steel jacket with adjustable clamps for durability
- Kanthal A1 Elements
- 101mm total insulation in side walls
- 88.5mm thick kiln lid
- Lid hinge design reduces risk of cracking during firing
- 108mm Ultralite granular insulation in the kiln floor



	Mercury 30	Aurora 40	Comet 60	Topworker 80	Topworker 120	Topworker 225	Topworker 450
Litres (approx)	30	40	60	79	118	225	450
Power	2.4kw	4.0kw	5.5kw	6.6kw	8.8kw	13kw	18.8kw
Internal Dimensions mm	Depth 230 Width 385	Depth 305 Width 400	Depth 446 Width 400	Depth 460 Width 460	Depth 690 Width 460	Depth 690 Width 650	Depth 780 Width 1060 x 690
Supply Required	10 Amps Standard Power Outlet	20 Amps Single Phase	32 Amps Single Phase	32 Amps Single Phase	40Amps Single Phase	63 Amps Single Phase	30 Amps 3 Phase
				3 Phase Option Available			
Price	\$4,540	\$5,140	\$6,190	\$7,990	\$9,490	\$11,990	\$17,490

# FRONT LOADING FIRED UP 50

After years of searching for the ideal compact front-loading bench kiln, we decided to build our own.

The Fired Up 50 combines the quality of our Industry range with a space-saving design, perfect for studios and benches. Its sturdy construction, high-quality materials, and safety features make it a long-term investment for any workspace.

A powerful, reliable, and compact kiln—designed for serious makers with limited space.

**CONTACT US FOR MORE  
INFORMATION OR TO PRE-ORDER**

## KEY FEATURES

- 50L Firing Capacity – Great for small batches, test firings, and detailed work
- Maximum Temperature: 1300°C
- Even Heat Distribution – Kanthal A1 or Resistohm 145 elements in side-wall grooves
- Robust Build – Galvanised steel frame with marine-grade sheet metal lining
- High-Quality Insulation – Low thermal mass bricks with high-grade board backing
- Enhanced Safety – Dual contactors included to reduce the risk of over-firing
- User-Friendly Control – Includes the reliable Stafford ST315C controller



	Litres (approx)	Power	Internal Dimensions mm	Supply	Price
<b>Fired Up 50</b>	50	3.9kw	Height 340 Width 380 Depth 380	20 Amps Single Phase	<b>\$6,890</b>

# FRONT LOADING POTTERYCRAFTS RANGE

Proudly manufactured in Stoke on Trent, our PotteryCrafts Front Loading Kilns are available in sizes ranging from 68 to 210 litres, making them ideal for both hobbyists and professional ceramists. Whether for intricate projects or larger batches, PotteryCrafts kilns provide the quality and performance you need.

## KEY FEATURES

- CERA-10 controller: Advanced software for efficiency, ease of use, and safety
- Low thermal mass insulation bricks and high-grade backup insulation boards
- High quality pressed steel powder coated frame
- Kanthal A1 spiral wound elements
- Captive key interlocks
- Brick to door seal



	Fireworker 68	Heatworker 90	Heatworker 135	Lightmaster 210
Litres (approx)	68	90	135	210
Power	5.5kw	6.0kw	7.5kw	11kw
Internal Dimensions mm	Height 460 Width 400 Depth 380	Height 550 Width 420 Depth 400	Height 680 Width 420 Depth 480	Height 760 Width 460 Depth 610
Supply Required	32 Amps Single Phase	32 Amps Single Phase	40 Amps Single Phase	50 Amps Single Phase
		3 Phase Option Available		
Price	\$7,890	\$11,890	\$13,290	\$15,490

**FULL KILN SPECIFICATIONS AVAILABLE ON OUR WEBSITE**

# INDUSTRY RANGE

**Built to Last, Built for You**

**Perfect for Home Studios, Classrooms  
& Commercial Settings**

**Solid Construction:** Marine-grade stainless steel and K23 firebricks ensure durability

**Expert Craftsmanship:** Built by craftsman for top performance

**Advanced Features:** Equipped with R type thermocouples; over temperature controllers for kilns larger than 425L

**Versatile Sizes:** Ranging from 100 to 990 litres

**Controller:** Comes with the either the Stafford or RKC PZ-400 Contoller

**BESPOKE KILNS MADE TO MEASURE**



	Litres (approx)	Internal Dimensions	Price
INDUSTRY 100	100	440mm wide, 460mm deep, 530mm high	\$8,290
INDUSTRY 140	140	460mm wide, 484mm deep, 605mm high	\$9,840
INDUSTRY 175	176	430mm wide, 560mm deep, 710mm high	10,890
INDUSTRY 240	240	500mm wide, 600mm deep, 800mm high	\$13,490
INDUSTRY 285H	283	500mm wide, 600mm deep, 952mm high	\$15,290
INDUSTRY 285	283	620mm wide, 640mm deep, 730mm high	\$15,290
INDUSTRY 340	340	760mm wide, 545mm deep, 930mm high	\$16,690
INDUSTRY 395	396	630mm wide, 660mm deep, 990mm high	\$18,390
INDUSTRY 425	425	760mm wide, 545mm deep, 1080mm high	\$18,690
INDUSTRY 510	510	900mm wide, 600mm deep, 1100mm high	\$22,740
INDUSTRY 710	708	1050mm wide, 800mm deep, 900mm high	\$27,790
INDUSTRY 990	991	1050mm wide, 800mm deep, 1270mm high	\$34,840

# RAKU KILN RANGE



**RODERVELD PYRAMID 135L**  
**\$3,990**



**INCLUDES:**  
120L DRUM KILN  
MANUAL  
GLOVES  
BURNER SET  
RAKU TONGS  
PRYOMETER  
BASE KILN SHELF  
3 PROPS

**DRUM KILN SET**  
**\$2,390**



**HEAT RESISTANT  
KILN GLOVES**    **\$24.95**



**RODERVELD GAS BURNER**  
**\$1,595**

# KILN SHELVES - ROUND

Cordierite Mullite:			
Price		Diameter (mm)	Thickness
\$48.00	\$24 for ½ shelf	240	13mm
\$52.00	\$26 for ½ shelf	260	13mm
\$66.00	\$33 for ½ shelf	320	12mm
\$74.00	\$37 for ½ shelf	350	12mm
\$74.00	\$37 for ½ shelf	370	12mm
\$74.00	\$37 for ½ shelf	380	16mm
\$85.00	\$42.40 for ½ shelf	420	12mm
\$99.00	\$49 for ½ shelf	420	16mm
\$120.00	\$60 for ½ shelf	460	16mm
\$145.00	\$72.50 for ½ shelf	520	20mm
\$156.00	\$78 for ½ shelf	550	20mm
\$179.00	\$90 for ½ shelf	560	18mm

Oxygen Bonded Silicon Carbide (OBSiC):			
Price		Diameter (mm)	Thickness
\$44		230	10mm
\$54	\$27 for ½ shelf	250	10mm
\$77		350	10mm

Nitrogen Bonded Silicon Carbide (NBSiC):			
Price		Diameter (mm)	Thickness
\$170	\$85 for ½ shelf	320	8mm
\$380	\$190 for ½ shelf	420	8mm

**PLEASE NOTE:**

- ♦ Shelf thickness may vary between 1 -2mm depending on supplier.
- ♦ Cordierite Mullite shelves can be cut to size at no extra cost, OBSiC & NBSiC shelves cannot be cut.
- ♦ Bespoke shapes and sizes can be ordered in from our suppliers, allow 6 – 12 weeks.

# KILN SHELVES - SQUARE

Cordierite Mullite:		
Price	Size (mm)	Thickness
\$58	280 x 340	16mm
\$38	310 x 310	12mm
\$42	330 x 330	12mm
\$60	330 x 350	16mm
\$82	330 x 440	20mm
\$86	330 x 450	20mm
\$44	350 x 350	12mm
\$66	350 x 380	16mm
\$58	400 x 400	13mm
\$68	400 x 400	16mm
\$89	400 x 400	20mm
\$96	400 x 450	20mm
\$88	400 x 500	16mm
\$110	400 x 500	20mm
\$60	420 x 420	12mm
\$89	450 x 450	15mm
\$110	450 x 450	18mm
\$115	450 x 450	20mm
\$115	450 x 470	20mm
\$120	450 x 500	20mm
\$165	450 x 600	25mm
\$125	470 x 500	20mm
\$125	500 x 500	18mm
\$148	550 x 550	20mm
\$180	550 x 550	38mm
\$185	550 x 600	25mm
\$189	610 x 610	20mm

Oxygen Bonded Silicon Carbide (OBSiC):		
Price	Size (mm)	Thickness
\$99	400 x 400	8mm
\$105	400 x 420	8mm
\$109	400 x 450	8mm
\$129	400 x 500	8mm
\$129	440 x 460	8mm
\$129	450 x 500	8mm
\$139	500 x 500	4mm
\$148	500 x 550	6mm
\$165	550 x 560	8mm

Nitrogen Bonded Silicon Carbide (NBSiC):		
Price	Size (mm)	Thickness
\$180	330 x 380	8mm
\$190	300 x 400	8mm
\$220	350 x 400	8mm
\$220	350 x 410	6mm
\$240	400 x 400	8mm

Hollow Core Square Shelves:		
Price	Size (mm)	Thickness
\$120	330 x 450	16mm
\$140	400 x 500	25mm
\$190	550 x 550	38mm

**PLEASE NOTE:**

- ◆ Shelf thickness may vary between 1 -2mm depending on supplier.
- ◆ Cordierite Mullite shelves can be cut to size at no extra cost, OBSiC & NBSiC shelves cannot be cut.
- ◆ Bespoke shapes and sizes can be ordered in from our suppliers, allow 6 – 12 weeks.

# PROPS

	45 mm	50 mm
25mm	\$2.50	\$2.50
50mm	\$3.90	\$3.90
75mm	\$5.50	\$5.50
100mm	\$6.90	\$6.90
150mm	\$9.50	\$9.50
200mm	\$12.90	\$12.90

## Bead Racks:

Bead Rack	\$46.00	1240°C
Bead Rack (High Fire)	\$62.00	1280°C
Pendant Rack	\$24.00	1240°C

# STACKERS & SETTERS



**PLATE STACKERS** 23 cm \$55.00  
34 cm \$68.00



**KILN SHELF STACKERS** \$99.00



**PLATE SETTER** 275mm \$45.00



**TILE SETTER** \$44.00

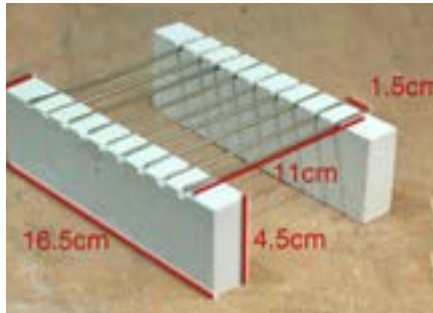
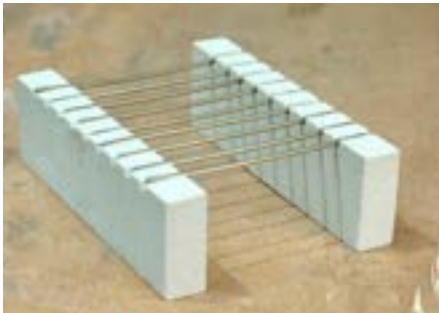


**TILE STACKER** Small \$24.00  
Large \$32.00



**KILN STILTS**  
24mm \$1.10 30mm \$1.60  
50mm \$2.20 56mm \$3.80

# BEAD RACK



**FIRED UP KILNS BEAD RACK \$46.00**

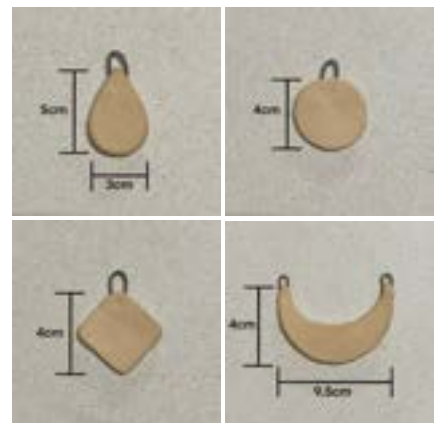
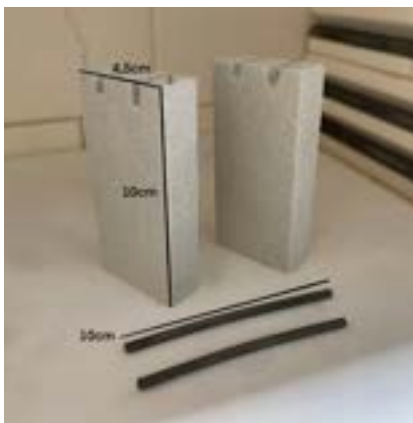
**HIRE FIRE OPTION \$62.00**

Ideal for firing beads and jewellery. By threading your pieces onto the wire, you can glaze the whole exterior of your piece. You can elevate these on sturdy kiln props for more clearance to hang longer pieces. Made from Cordierite Mullite with 2.3mm Kanthal A1 wires, that can be rearranged to accommodate different sized pieces. Rated to 1240°C.



**TUNGSTEN WIRE BEAD RACK \$34.95**

# PENDANT RACK



**PENDANT RACK \$24.00**

Safely hang your delicate ceramic pendants for seamless firing.

10cm high, Kanthal A1 wires, 100mm grooved supports, max temp 1240°C

Recommended pendant size in picture are:

Circle - 4cm, Diamond shape - 4cm, Drop shape - 3cm wide x 5 cm high, Croissant shape - 9.5cm wide x 5.5 cm high

# FURNITURE SETS

Fired Up 13	OBSiC Shelves: 3 x 200mm OBSiC Props: 9 (30mm, 40mm or 50mm configurations)	\$95
Craft 25	Shelves: 3 x 230mm + 1 bag of kiln wash Props: 3 x 25mm, 6 x 50mm, 6 x 75mm	\$205
Mercury 30	Shelves: 2 x 320mm + 1 bag of kiln wash Props: 6 x 50mm, 3 x 75mm	\$210
Aurora 40	Shelves: 3 x 350mm + 1 bag of kiln wash Props: 6 x 50mm, 3 x 75mm, 3 x 100mm	\$295
Craft 50	Shelves: 3 x 350mm + 1 bag of kiln wash Props: 3 x 25mm, 6 x 50mm, 6 x 75mm, 3 x 100mm, 3 x 150mm	\$265
Fired Up 50	Shelves: 4 x 350mm x 350mm + 1 bag of kiln wash Props: 3 x 25mm, 6 x 50mm, 6 x 75mm, 3 x 100mm, 3 x 150mm	\$340
Comet 60	Shelves: 4 x 370mm (or 380mm) + 1 bag of kiln wash Props: 6 x 50mm, 6 x 75mm, 3 x 100mm, 3 x 150mm	\$375
Craft 60	Shelves: 4 x 350mm + 1 bag of kiln wash Props: 6 x 25mm, 6 x 50mm, 6 x 75mm, 3 x 100mm, 3 x 150mm	\$405
Fireworker 68	Shelves: 5 x 350mm / 350mm + 1 bag of kiln wash Props: 6 x 25mm, 6 x 50mm, 6 x 75mm, 3 x 100mm, 3 x 150mm	\$415
Craft 70	Shelves: 4 x 380mm + 1 bag of kiln wash Props: 6 x 25mm, 6 x 50mm, 6 x 75mm, 6 x 100mm, 3 x 150mm	\$395
Topworker 80	Shelves: 4 x 420mm + 1 bag of kiln wash Props: 6 x 50mm, 6 x 75mm, 3 x 100mm, 3 x 150mm	\$455
Heatworker 90	Shelves: 5 x 380mm / 350mm + 1 bag of kiln wash Props: 3 x 25mm, 9 x 50mm, 9 x 75mm, 6 x 100mm, 3 x 150mm	\$615
Craft 100	Shelves: 4 x 455mm + 2 bags of kiln wash Props: 6 x 25mm, 6 x 50mm, 6 x 75mm, 3 x 100mm, 3 x 150mm	\$530
Industry 100	Shelves: 5 x 400mm / 400mm + 2 bags of kiln wash Props: 3 x 25mm, 9 x 50mm, 9 x 75mm, 3 x 100mm, 3 x 150mm, 3 x 200mm	\$480
Craft 120	Shelves: 5 x 455mm + 2 bags of kiln wash Props: 6 x 25mm, 9 x 50mm, 6 x 75mm, 6 x 100mm, 3 of 150mm	\$650
Topworker 120	Shelves: 6 x 420mm + 2 bags of kiln wash Props: 9 x 25mm, 9 x 50mm, 15 x 75mm, 3 x 150mm	\$730
Heatworker 135	Shelves: 5 x 380mm / 430mm + 2 bags of kiln wash Props: 3 x 25mm, 9 x 50mm, 9 x 75mm, 6 x 100mm, 6 x 150mm, 3 x 200mm	\$730
Industry 140	Shelves: 6 x 400mm / 400mm + 2 bags of kiln wash Props: 3 x 25mm, 9 x 50mm, 9 x 75mm, 6 x 100mm, 3 x 150mm, 3 x 200mm	\$610
Craft 150	Shelves: 6 x 455mm + 2 bags of kiln wash Props: 6 x 25mm, 9 x 50mm, 6 x 75mm, 6 x 100mm, 3 x 150mm, 3 x 200mm	\$800
Industry 175	Shelves: 5 x 380mm / 500mm + 2 bags of kiln wash Props: 3 x 25mm, 9 x 50mm, 9 x 75mm, 6 x 100mm, 6 x 150mm, 3 x 200mm	\$730
Topworker 190	Shelves: 5 x 520mm + 2 bags of kiln wash Props: 12 x 50mm, 12 x 75mm, 12 x 100mm, 6 x 150mm, 6 x 200mm	\$799
Industry 240 & 285H	Shelves: 6 x 400mm / 500mm + 2 bags of kiln wash Props: 6 x 25mm, 12 x 50mm, 12 x 75mm, 6 x 100mm, 6 x 150mm, 3 x 200mm	\$820
Industry 285	Shelves: 5 x 550mm / 550mm + 2 bags of kiln wash Props: 6 x 25mm, 12 x 50mm, 12 x 75mm, 6 x 100mm, 6 x 150mm, 3 x 200mm	\$760
Craft 200	Shelves: 6 x 570mm + 2 bags of kiln wash Props: 6 x 25mm, 9 x 50mm, 6 x 75mm, 6 x 100mm, 3 x 150mm, 3 x 200mm	\$830

## KILN ELEMENTS

Top Loading

Price	Model	Amperage
\$190	Plug & Fire 10	10amp
\$240	Craft 25	10amp
\$330	Craft 50	15amp
\$390	Craft 60	16.6amp
\$460	Craft 70	26 amp
\$580	Craft 100	28amp
\$630	Craft 120	30 amp
\$720	Craft 150	35amp
\$810	Craft 200	3 x 25amp

PotteryCrafts Front Loading

Price	Model	Amperage
\$260	Pluto 9	13amp
\$420	Fireworker 50	17amp
\$590	Fireworker 68	23amp
\$760	Heatworker 90	25amp
\$850	Heatworker 135	40amp
\$960	Lightmaster 210	48amp

PotteryCrafts Top Loading

Price	Model	Amperage
\$240	Mercury 30	10amp
\$390	Aurora 40	16.6amp
\$490	Comet 60	23amp
\$560	Topworker 80	28amp
\$720	Topworker 120	37amp
\$860	Topworker 190	63amp
\$910	Topworker 225	63amp
POA	Topworker 450	82amp

Industry Range

Price	Model	Amperage
\$560	Industry 100	1 x 25amp
\$640	Industry 140	1 x 34amp or
\$640	Industry 140	2 x 17amp
\$720	Industry 175	1 x 40amp or
\$720	Industry 175	2 x 20amp
\$860	Industry 240	2 x 23amp
\$970	Industry 285H	3 x 19amp
\$970	Industry 285	3 x 19amp
\$1,060	Industry 340	3 x 24amp
\$1,290	Industry 395	3 x 25amp
\$1,490	Industry 425	3 x 30amp
\$1,830	Industry 510	3 x 32amp
\$2,260	Industry 710	3 x 40amp
POA	Industry 990	3 x 61amp

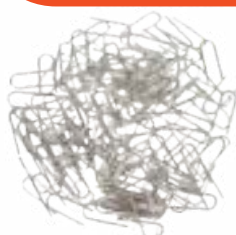
Earlier Studio Range

Price	Model	Amperage
\$460	Studio 1.7	20amp
\$530	Studio 2.7	22.75amp
\$600	Studio 3.4	25amp
\$640	Studio 5.2	30amp
\$760	Studio 6.0	40amp
\$900	Studio 7.0	48amp
\$960	Studio 8.6	60amp

Earlier Craft Range

Price	Model	Amperage
\$240	Craft 1.0	10amp
\$360	Craft 1.5	15amp
\$360	Craft 1.5W	15amp
\$470	Craft 2.2	20amp
\$540	Craft 2.9	22.75amp
\$660	Craft 3.7	25amp
\$780	Craft 4.6	30amp
\$810	Craft 5.8	36amp

**Need an element thats not listed?**  
Click here to visit our website to learn about our ELEMENT WINDING service.



**ELEMENT PINS \$16.00**  
Pack of 20

# THERMOCOUPLES



**K-TYPE** \$48.00

K-type thermocouple unsheathed.  
The standard size is 200mm, however we can shorten on request.



**R-TYPE** from \$240.00

Available in different lengths.  
Rated to 1400c.



**S-TYPE** from \$260.00

Fits all of our current CRAFT Range of kilns. Standard size is 125mm.



**COMPENSATING CABLE**  
**K-TYPE** \$6.00 per metre  
Suitable for K-Type Thermocouples



**COMPENSATING CABLE**  
**R-TYPE** \$6.00 per metre  
Suitable for R-Type Thermocouples

# CONTROLLERS



**STAFFORD** \$995.00  
**CONTROLLER ST315C**



**STAFFORD 215C** \$1295.00  
**WIFI OPTION** \$1495.00



**CONNECTOR** \$199.00  
**FOR STAFFORD 215C**



**PYROMETER** \$79.00

# VENT MASTERS & SPARE PARTS



## **ORTON VENT MASTER KIT** \$965.00

Newest and most advanced. Easy to install & prevents fumes from entering your workspace



## **ORTON VENT MASTER EXPANSION KIT** \$505.00

Allows you to vent a second kiln using your Orton Ventmaster



## **HIGH TEMP FLEXIBLE RUBBER CONDUIT** \$88.00 per metre

110mm wide, flexible conduit suitable for venting kiln exhaust across distance



## **CERAMIC FIBRE LID or DOOR SEALS** from \$44.00



## **KILN Bungs** from \$11.00

We stock kiln bungs for our kiln range & custom-make sizes on request



## **REFRACTORY MORTAR & ADHESIVES** from \$22.00



## **VENT TILE** \$13.00

Replacement damper tile for the vent on top of your kiln.



## **ELEMENT PINS** pack of 20 \$16.00

High temp wire element pins to keep you elements safely in place



## **CONTACTORS** from \$74.00

# PYROMETRIC CONES

## Temperature Equivalents Large Regular Orton Pyrometric Cones

		Cones #	60°C/hr Heating Rate	150°C/hr Heating Rate
			Medium Firing Speed	Fast Firing Speed
Bisque		09	917	928
		08	942	954
		07	973	985
		06	995	1011
	Earthenware	05	1030	1046
		04	1060	1070
		03	1086	1101
		02	1101	1120
	01	1117	1137	
		1	1136	1154
		2	1142	1162
Mid-Fire		3	1152	1168
		4	1160	1181
		5	1184	1205
	Stoneware	6	1220	1241
		7	1237	1255
8		1247	1269	
Porcelain		9	1257	1278
		10	1282	1303
		11	1293	1312
		12	1304	1324

### PRICE

Lots of 10 ..... **\$12.00**   Lots of 20 ..... **\$22.00**   Lots of 50 ..... **\$40.00**

Wire Cone Holders (Pack of 3) ..... **\$5.95**



# COWLEY POTTERS WHEEL



Whether you're a beginner or a pro, we've got the perfect pottery wheel for you!

## Cowley Double Drive Potters Wheel

Made in New Zealand, the versatile Cowley Double Drive Wheel has a sturdy 280mm aluminium wheel head, adjustable speed, and a 20kg weight capacity. Its double-drive system delivers torque for large pots. Its compact and lightweight design makes it perfect for demonstrations and easy storage.



# FIRED UP PW-DC WHEELS



\$1,750

## FIRED UP PW-DC

This pottery wheel has a 3/4 HP motor with great torque, handles 45kg of clay, runs quietly, and features a 355mm wheel head, removable splash pan, and 300RPM bi-directional rotation.



\$1,895

## FIRED UP PW-DC ADJUSTABLE LEGS

Features adjustable legs (461-661mm), a powerful 3/4 HP motor that handles 45kg of clay, and a quiet, vibration-free design. It includes a 355mm wheel head, removable splash pan, and 300RPM bi-directional rotation.



\$1,190

## FIRED UP PW-DC TABLE-TOP

Perfect for beginners and small spaces, featuring a 1/3 HP motor, 300mm wheel head, removable splash pan, 300RPM bi-directional rotation, and foot pedal speed control.



\$98

## ADJUSTABLE POTTERS STOOL

Experience comfort with our adjustable potter's stool, featuring a tiltable cushioned seat (35cm diameter) and height adjustment from 48cm to 69cm.

# SHIMPO POTTERY WHEELS



\$1,290

## FIRED UP PW-DC POTTERY WHEEL

Portable and lightweight, with a 10kg centering capacity. It features an electronic speed controller, a built-in tool area, a leak-proof splash pan, two bats, and a detachable foot pedal. Operating with a 1/8 HP DC motor, it accommodates both left and right-handed users.



\$1,749

## SHIMPO RK-55 POTTERY WHEEL

Lightweight and portable, the Shimpo RK-55 is perfect for beginners and classrooms. It features a belt-driven design, remote foot pedal, two-piece splash pan, and built-in worktable. With a smooth, quiet motor, automatic belt tension, and a stable three-leg design, it offers reliable performance with a 10kg centering capacity.



\$2,390

## SHIMPO WHISPER RK-3T

Powerful and responsive, with high torque at all speeds, operates quietly at 30 decibels, can be used as a tabletop, and features adjustable telescopic legs with three settings for all throwing positions.

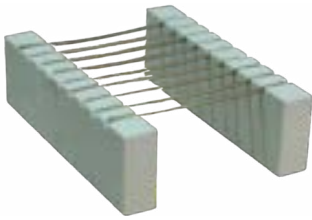


\$2,890

## SHIMPO WHISPER RK-3E/VL

Features a powerful brushless Direct Drive motor for high torque, adjustable legs for stability, an electronic speed controller, a two-piece splash pan, a built-in worktable, and a detachable foot pedal, accommodating a 45kg centering capacity.

# POTTERY EQUIPMENT



**BEAD RACK** \$46.00  
High Fire Option \$62.00



**PENDANT RACK** \$24.00



**TUNGSTEN WIRE BEAD RACK** \$98.00



**ADJUSTABLE POTTERS STOOL** \$98.00



**KILN WASH**  
1kg \$16.00  
5kg \$64.00



**POTTERS PLASTER** from \$5.20



**WAX RESIST**  
500ml \$15.00  
1 Litre \$24.00  
5 Litre \$98.00



**PEHATINE** 500ml \$22.50  
**BRUSING MEDIUM**



**RAKU TONGS** \$49.00  
80cm Toothed  
104cm Non Toothed



**POTTERS APRON** \$30.00



**WIRE CONE HOLDERS** Pack of 3 \$5.95



**BAT CHAMOIS** \$8.95



**BAT INSERTS X 5**  
\$33.00



**BAT SYSTEM** \$76.00



**PLYWOOD BATS**  
300mm (6mm thick) \$17.80  
350mm (6mm thick) \$21.00



**PLASTIC BAT** \$15.95

# POTTERY EQUIPMENT



**FIRED UP TURNING GRIP**  
\$95.00



**KILN STILTS** from \$1.10



**BANDING WHEELS**

180mm \$77.00  
250mm \$139.00  
300mm \$210.00



**ALUMINIUM BANDING WHEELS**

150mm \$29.95 200mm \$37.95  
250mm \$49.95 300mm \$59.95



**WEDGING ANGLE.** \$39.95  
Table Mounted



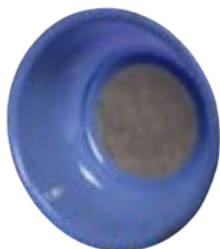
**PLASTER BAT KIT** \$22.50



**ELEMENT WIRE**  
High Temp from \$10.00



**RUB BRICK** \$34.00



**SIEVE/MESH BOWL** \$20.00  
Mesh Size 60, 80, 100 & 120 Available



**ROTARY BRUSH \$52.00**  
**SIEVE ATTACHMENT**



**KILN BUNGS**  
from \$10.00



**SCOOPS** from \$3.00



**PYROMETER** \$79.00



**CANVAS \$44.00**  
**FOR SLAB ROLLERS**



**HEAT RESISTANT \$24.95**  
**KILN GLOVES**



**ELEMENT PINS**  
High Temp pack of 20 \$16.00

# POTTERY EQUIPMENT



**REFRACTORY** from **\$22.00**  
**MORTARS & ADHESIVES**



**VENT TILE** **\$13.00**



**PLASTIC** from **\$15.95**  
**BUCKET**



**ELECTRIC GLAZE** **\$375.00**  
**MIXER**



**PYROMETRIC** from **\$12.00**  
**CONES**



**HIGH TEMP** **\$88.00**  
**RUBBER CONDUIT**



**REPLACEMENT** **\$44.00**  
**CERAMIC FIBRE LID**



**EXTRUDER GUN** **\$26.00**  
with 20 Dies



**EXTRUDER** **\$26.95**  
**HAND HELD WITH 6 DIES**



**HOLLOW DIES** **\$29.95**  
**HANDHELD EXTRUDER**



**BLANK DIE** **\$4.95**  
**HANDHELD EXTRUDER**



**EXTRUDER GUN** **\$15.95**  
**WITH 18 DIES**



**EXTRUDER WALL** **\$369.00**  
**MOUNTED** with 4 Dies



**COWLEY EXTRUDER** **\$545.00**  
**WALL MOUNTED**



**HOLLOW DIE PLATES - COWLEY WALL** from **\$89.00**  
**MOUNTED EXTRUDER** (Various shapes & sizes)

# POTTERY TOOLS



## GLAZE POURING LADLE

Small (40ml) **\$22.00**  
Medium (120ml) **\$22.00**  
Large (180ml) **\$35.00**



## FACET CUTTERS

Small Straight Wire **\$9.95**  
Large Straight Wire **\$11.95**  
Large Wiggle Wire **\$11.95**



## WEDGING ANGLE. **\$39.95**

Table Mounted



## HAKE BRUSHES **from \$5.95** HORSESHOE



## HAKE BRUSHES **from \$5.95** TRADITIONAL



## POTTERY BRUSHES **from \$3.95**



## LOOP TOOLS **\$16.95**



## CLAY CUTTER **\$26.00** WITH ROLLER



## POTTERY TOOLS **\$26.95** IN WOODEN BOX



## POTTERY TOOLS **\$25.95** IN ZIP LOCK BAG



## ULTIMATE **\$32.95** POTTERY TOOLS SET



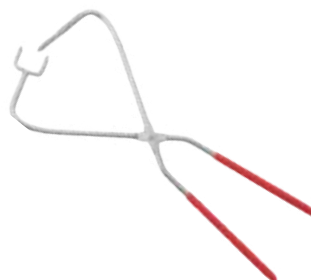
## ASSORTED CLAY **from \$15.95** CARVING TOOLS



## PLATE DIPPING **\$15.95** TONGS



## SPRING LOADED **\$22.95** TONGS



## BUDGET **\$10.95** DIPPING TONGS



## DIPPING TONGS **\$16.95**

# POTTERY TOOLS



**RAKU TONGS** \$49.00  
80cm Toothed  
104cm Non Toothed



**SIPHON BLOWER**  
Small \$19.95  
Large \$19.95



**POTTERY SPONGE** \$1.80



**SUPER ABSORBANT SPONGE** \$7.95



**SPONGES ON STICK** Set of 5 \$10.95



**CLAY ROLLING PIN** \$5.95



**UNDERGLAZE MIXING PALETTE** \$3.00



**CLAY SCRAPER** \$9.95



**FIRE UP TURNING GRIP** \$95.00



**TUNGSTEN STEEL TRIMMING TOOL SET** \$14.95



**TUNGSTEN TRIMMING TOOLS** \$28.95



**WOODEN POTTERY TOOLS**  
5 Piece \$4.95  
10 Piece \$8.95



**HOLE PUNCHES** \$12.95  
Set of 4 - Full Circle & 1/2 Available



**CALIPERS** from \$9.95



**KIDNEYS** Set of 3 \$6.95



**HEAT RESISTANT KILN GLOVES** \$24.95

# POTTERY TOOLS



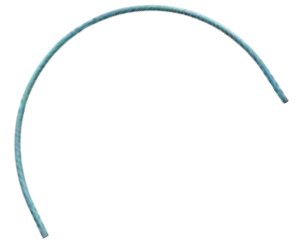
**WOODEN PADDLE** \$8.95



**HANDLE MOLDS**  
Set of 9 **\$19.95**



**LETTER STAMPS** \$14.95



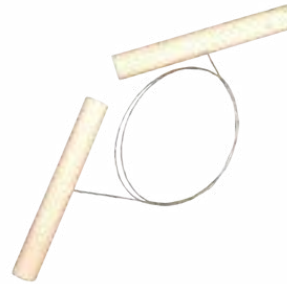
**STAINLESS STEEL HARP** \$6.95



**STEEL RIBS** \$12.95  
Set of 10



**SHAPED RIBS** \$24.95  
7 Assorted Shapes



**WIRE CLAY CUTTER** \$3.00



**TURNING TOOLS** \$5.95



**SLIP TRAILER SET** \$15.95



**SLIP TRAILER BULB** \$7.95



**POTTERY NEEDLE** \$1.95



**WHEEL THROWING GAUGE** \$42.00



**FOLLOW US  
ON  
SOCIAL MEDIA**



# CLAY & SLIP



**AUDREY BLACKMAN  
PORCELAIN**

From **\$67.00**  
Firing Temp 1220° - 1280°C



**BASALT FLECK**

From **\$27.90**  
Firing Temp 1200° - 1270°C



**BIRCH WHITE SMOOTH  
STONEWARE**

From **\$16.90**  
Firing Temp 1150° - 1280°C



**BUFF EARTHERWARE  
STONEWARE**

From **\$16.20**  
Firing Temp 1120° - 1240°C



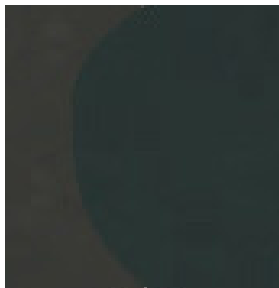
**IRONSTONE PLASTIC**

From **\$21.50**  
Firing Temp 1140° - 1280°C



**PALE BUFF SMOOTH  
STONEWARE**

From **\$26.90**  
Firing Temp 1120° - 1280°C



**PROFESSIONAL SMOOTH  
BLACK**

From **\$55.20**  
Firing Temp 1140° - 1260°C



**RAKU CRANK  
MODELLING CLAY**

From **\$18.90**  
Firing Temp 1060° - 1280°C



**RED TERRACOTTA  
(LOW FIRE)**

From **\$16.20**  
Firing Temp 1020° - 1160°C



**G&S SPECIAL RED CLAY**

From **\$15.50**  
Firing Temp: 1000 - 1240°C



**WHITE PRODUCTION  
STONEWARE**

From **\$26.90**  
Firing Temps on website



**STONEWARE SPECIAL  
FLECK**

From **\$26.80**  
Firing Temp 1120° - 1280°C



**RUSTIC STONEWARE**

From **\$16.20**  
Firing Temp 1180° - 1280°C



**SUPER WHITE STONEWARE**

From **\$21.90**  
Firing Temp 1220° - 1280°C



**WHITE STONEWARE**

From **\$32.95**  
Firing Temp 1240° - 1280°C



**PROCELAIN**

From **\$52.95**  
Firing Temp 1240° - 1260°C

# MID-FIRE GLAZE



**BANKSIA**  
500ml Brush on **\$15.95**  
1kg Powder **\$17.25**



**BILLABONG**  
500ml Brush on **\$15.95**  
1kg Powder **\$17.25**



**CLEAR GLOSS**  
500ml Brush on **\$14.95**  
1kg Powder **\$14.95**



**CLEAR MATT**  
500ml Brush on **\$14.95**  
1kg Powder **\$14.85**



**DAINTREE**  
500ml Brush on **\$16.95**  
1kg Powder **\$17.95**



**EUCALYPTUS**  
500ml Brush on **\$15.95**  
1kg Powder **\$16.95**



**GALAH**  
500ml Brush on **\$18.95**  
1kg Powder **\$28.95**



**KOALA**  
500ml Brush on **\$15.95**  
1kg Powder **\$17.25**



**METALIC BLACK**  
500ml Brush on **\$16.95**



**METALIC BRONZE**  
500ml Brush on **\$19.95**



**NATIVE IRIS**  
500ml Brush on **\$15.95**  
1kg Powder **\$15.95**



**OPAL**  
500ml Brush on **\$15.50**  
1kg Powder **\$15.95**



**OUTBACK**  
500ml Brush on **\$15.50**  
1kg Powder **\$15.95**



**ROSELLA**  
500ml Brush on **\$18.95**  
1kg Powder **\$28.95**



**SHINO STYLE**  
500ml Brush on **\$25.95**  
500g Powder **\$25.95**



**TOMATO RED**  
500ml Brush on **\$15.95**  
1kg Powder **\$19.95**

# MID-FIRE GLAZE



**WHITE GLOSS**  
500ml Brush on **\$15.50**  
1kg Powder **\$15.95**



**WATTLE**  
500ml Brush on **\$16.95**  
1kg Powder **\$17.95**



**WISTERIA**  
500ml Brush on **\$15.50**  
1kg Powder **\$16.25**



**PEHATINE**  
Brushing Medium 500ml **\$22.50**



# AMACO GLAZE



**BLUE RUTILE**  
472ml **\$39.00**



**HONEY FLUX**  
472ml **\$39.00**



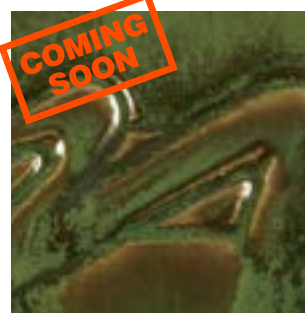
**INDIGO FLOAT**  
472ml **\$39.00**



**OATMEAL**  
472ml **\$39.00**



**OBSIDIAN**  
472ml **\$39.00**



**SEAWOOD**  
472ml **\$39.00**



**SMOKEY MERLOT**  
472ml **\$42.00**



**TEXTURED TURQUOISE**  
472ml **\$39.00**

# STONEWARE GLAZE



**AMAZONITE**  
500ml Brush on **\$15.95**  
1kg Powder **\$16.95**



**AMBER**  
500ml Brush on **\$15.95**  
1kg Powder **\$16.95**



**AVENTURINE**  
500ml Brush on **\$15.95**  
1kg Powder **\$16.95**



**COPAL**  
500ml Brush on **\$15.95**  
1kg Powder **\$16.95**



**GALENA**  
500ml Brush on **\$15.95**  
1kg Powder **\$16.95**



**HOWLITE**  
500ml Brush on **\$15.95**  
1kg Powder **\$16.95**



**INDICOLITE**  
500ml Brush on **\$15.95**  
1kg Powder **\$16.95**



**KYANITE**  
500ml Brush on **\$15.95**  
1kg Powder **\$16.95**



**LEGRANDITE**  
500ml Brush on **\$16.95**  
1kg Powder **\$18.95**



**MALACHITE**  
500ml Brush on **\$15.95**  
1kg Powder **\$16.95**



**SAPPHIRE**  
500ml Brush on **\$15.95**  
1kg Powder **\$16.95**



**WHITE GLOSS**



**CLEAR GLOSS**  
500ml Brush on **\$15.95**  
1kg Powder **\$16.95**



**RAKU BASE GLAZE**  
1kg Powder **\$16.95**



**CLEAR GLOSS EARTHENWARE GLAZE**  
1kg Powder **\$19.90**

## RAKU GLAZE

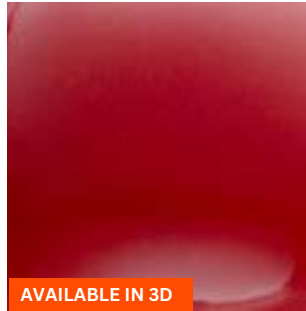
## EARTHENWARE

# UNDER GLAZE



**PIMENTO**

50ml **\$11.00** 250ml **\$44.00**



AVAILABLE IN 3D

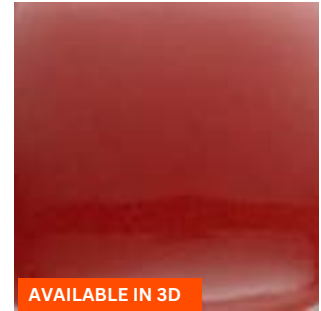
**CHERRY RED**

50ml **\$9.00** 250ml **\$38.50**  
3D 100ml **\$19.00**



**RED HOT**

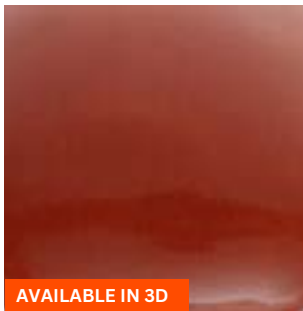
50ml **\$11.00** 250ml **\$24.00**



AVAILABLE IN 3D

**NEW RED**

50ml **\$9.00** 250ml **\$35.50**  
3D 100ml **\$18.00**



AVAILABLE IN 3D

**ROSSO**

50ml **\$9.00** 250ml **\$24.00**  
3D Glaze 100ml **\$15.50**



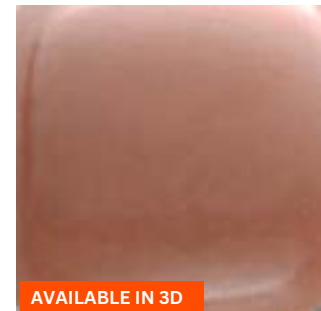
**PASSION PINK**

50ml **\$6.50** 250ml **\$24.00**



**CHEEKY PINK**

50ml **\$6.50** 250ml **\$24.00**



AVAILABLE IN 3D

**CARNATION PINK**

50ml **\$6.50** 250ml **\$49.50**  
3D Glaze 100ml **\$18.00**



**JUST PINK**

50ml **\$6.50** 250ml **\$22.00**



**RED BROWN**

50ml **\$6.50** 250ml **\$24.00**



**MUSCADEL**

50ml **\$9.00** 250ml **\$46.50**



AVAILABLE IN 3D

**BROWN**

50ml **\$6.50** 250ml **\$22.00**  
3D 100ml **\$15.50**



**MOCHA**

50ml **\$6.50** 250ml **\$24.00**



**MAROON**

50ml **\$9.00** 250ml **\$35.50**



**HEATHER**

50ml **11.00** 250ml **\$46.60**



**DUSTY RED**

50ml **\$6.50** 250ml **\$27.50**

# UNDER GLAZE



**BLUSH**

50ml **\$6.50**    250ml **\$24.00**



**CARAMEL**

50ml **\$6.50**    250ml **\$22.00**



**DUSTY PINK**

50ml **\$6.50**    250ml **\$30.00**



**SALMON PINK**

50ml **\$6.50**    250ml **\$24.00**



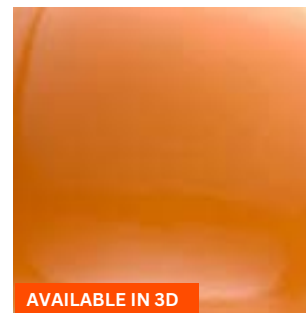
**CHESTNUT**

50ml **\$6.50**    250ml **\$22.00**  
3D Glaze 100ml **\$15.50**



**TANGERINE**

50ml **\$6.50**    250ml **\$24.00**



**ORANGE FLAME**

50ml **\$6.50**    250ml **\$24.00**  
3D Glaze 100ml **\$18.00**



**FLAMINGO**

50ml **\$6.50**    250ml **\$27.50**



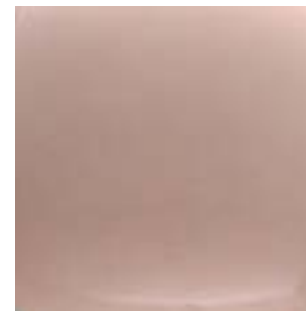
**CORAL**

50ml **\$6.50**    250ml **\$22.00**



**IVORY BEIGE**

50ml **\$6.50**    250ml **\$22.00**



**SOFT PINK**

50ml **\$6.50**    250ml **\$22.00**



**POPPY**

50ml **\$6.50**    250ml **\$24.00**



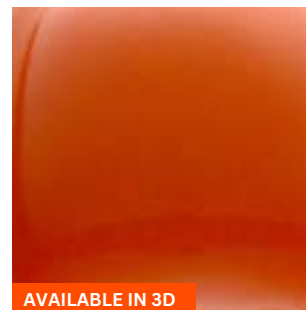
**BRIGHT RED**

50ml **\$11.00**    250ml **\$49.50**  
3D Glaze 100ml **\$18.00**



**FRUITY RED**

50ml **\$9.00**    250ml **\$38.50**



**JUICY ORANGE**

50ml **\$9.00**    250ml **\$33.00**  
3D Glaze 100ml **\$18.00**

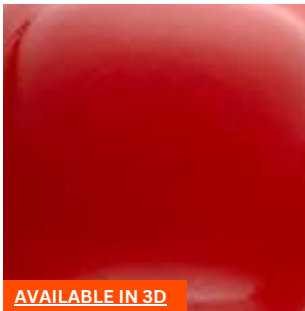


**MANDARIN**

50ml **\$9.00**    250ml **\$35.50**



# UNDER GLAZE



AVAILABLE IN 3D

## RED FLAME

50ml **\$11.00** 250ml **\$38.50**  
3D Glaze 100ml **\$18.00**



## IT'S RED

50ml **\$9.00** 250ml **\$33.00**



## SAFFRON

50ml **\$9.00** 250ml **\$33.00**



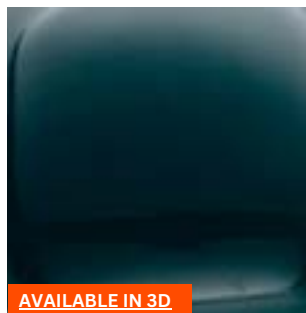
## NAARTJIE

50ml **\$6.50** 250ml **\$27.50**



## FYNBOS

50ml **\$6.50** 250ml **\$27.50**



AVAILABLE IN 3D

## BLUE GREEN

50ml **\$6.50** 250ml **\$24.00**  
3D Glaze 100ml **\$15.50**



AVAILABLE IN 3D

## DARK GREEN

50ml **\$6.50** 250ml **\$22.00**  
3D Glaze 100ml **\$15.50**



## MEDIUM GREEN

50ml **\$6.50** 250ml **\$24.00**



## JADE

50ml **\$6.50** 250ml **\$22.00**



AVAILABLE IN 3D

## AQUAMARINE

50ml **\$6.50** 250ml **\$22.00**  
3D Glaze 100ml **\$18.00**



AVAILABLE IN 3D

## KIWI GREEN

50ml **\$6.50** 250ml **\$22.00**  
3D Glaze 100ml **\$18.00**



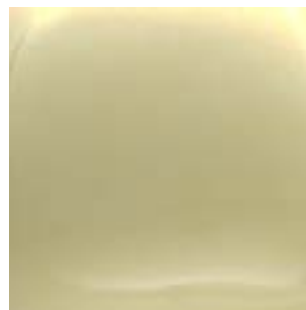
## CHARTREUSE

50ml **\$6.50** 250ml **\$24.00**



## LIME GREEN

50ml **\$6.50** 250ml **\$22.00**



## LEMON YELLOW

50ml **\$6.50** 250ml **\$22.00**



## OLIVE GREEN

50ml **\$6.50** 250ml **\$24.00**



## TEAL GREEN

50ml **\$6.50** 250ml **\$22.00**

# UNDER GLAZE



**RACING GREEN**

50ml **\$6.50** 250ml **\$22.00**



**IRISH GREEN**

50ml **\$6.50** 250ml **\$22.00**  
3D Glaze 100ml **\$18.00**



**SPEARMINT**

50ml **\$6.50** 250ml **\$22.00**



**SEA GREEN**

50ml **\$6.50** 250ml **\$22.00**



**GOLDEN YELLOW**

50ml **\$6.50** 250ml **\$24.00**  
3D Glaze 100ml **\$18.00**



**GOLDEN WHEAT**

50ml **\$6.50** 250ml **\$22.00**



**YUMMY YELLOW**

50ml **\$9.00** 250ml **\$33.00**  
3D Glaze 100ml **\$18.00**



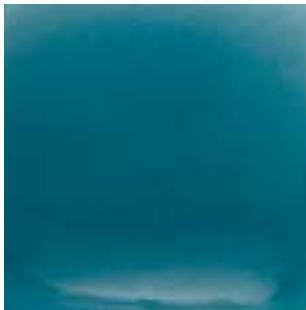
**BRIGHT YELLOW**

50ml **\$6.50** 250ml **\$27.50**  
3D Glaze 100ml **\$18.00**



**SILK BLUE**

50ml **\$6.50** 250ml **\$22.00**



**TURQUOISE**

50ml **\$6.50** 250ml **\$27.50**



**ELECTRIC BLUE**

50ml **\$6.50** 250ml **\$27.50**



**SKYE BLUE**

50ml **\$6.50** 250ml **\$22.00**  
3D Glaze 100ml **\$18.00**



**CHUN BLUE**

50ml **\$6.50** 250ml **\$22.00**



**SPECKLED BLUE**

50ml **\$6.50** 250ml **\$24.00**



**SPECKLED TAN**

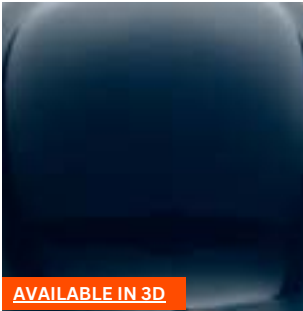
50ml **\$6.50** 250ml **\$24.00**



**ORANGE**

50ml **\$6.50** 250ml **\$24.00**  
3D Glaze 100ml **\$15.50**

# UNDER GLAZE



AVAILABLE IN 3D

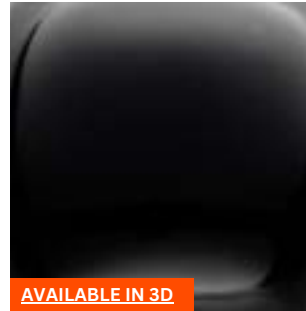
## MARINE GLOW

50ml **\$6.50** 250ml **\$27.50**  
3D Glaze 100ml **\$18.00**



## ALBANY

50ml **\$6.50** 250ml **\$27.50**



AVAILABLE IN 3D

## BLACK

50ml **\$6.50** 250ml **\$27.50**  
3D Glaze 100ml **\$18.00**



## INDIGO

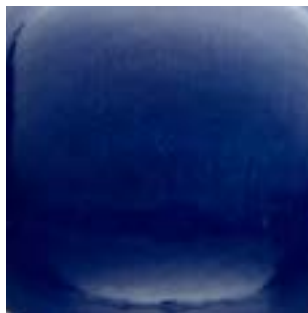
50ml **\$6.50** 250ml **\$27.50**



AVAILABLE IN 3D

## DARK BLUE

50ml **\$6.50** 250ml **\$24.00**  
3D Glaze 100ml **\$18.00**



## BAY BLUE

50ml **\$6.50** 250ml **\$27.50**



## MEDIUM BLUE

50ml **\$6.50** 250ml **\$24.00**



## CORNFLOWER

50ml **\$6.50** 250ml **\$22.00**



AVAILABLE IN 3D

## GREEK BLUE

50ml **\$6.50** 250ml **\$22.00**  
3D Glaze 100ml **\$15.50**



## LILAC

50ml **\$6.50** 250ml **\$22.00**



AVAILABLE IN 3D

## GUM METAL GREY

50ml **\$6.50** 250ml **\$24.00**  
3D Glaze 100ml **\$18.00**



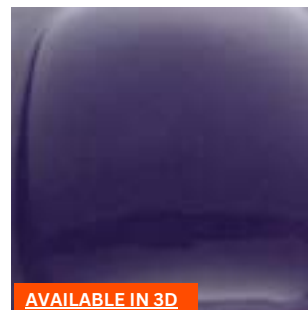
## WARM GREY

50ml **\$6.50** 250ml **\$22.00**



## AUBERGINE

50ml **\$6.50** 250ml **\$33.00**



AVAILABLE IN 3D

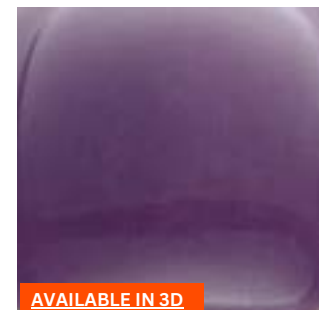
## ROYAL PURPLE

50ml **\$9.00** 250ml **\$33.00**  
3D Glaze 100ml **\$18.00**



## BERRY STAIN

50ml **\$9.00** 250ml **\$44.00**



AVAILABLE IN 3D

## PURPLE

50ml **\$9.00** 250ml **\$24.00**  
3D Glaze 100ml **\$20.50**

# UNDER GLAZE



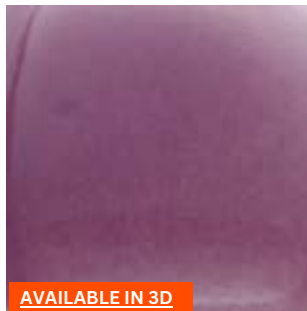
**LAVENDER**

50ml **\$6.50**    250ml **\$27.50**



**WISTERIA**

50ml **\$9.00**    250ml **\$30.00**



AVAILABLE IN 3D

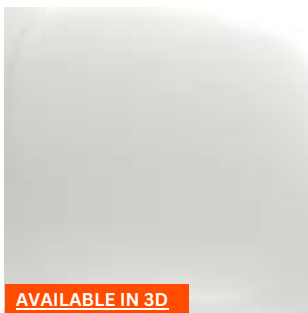
**MAUVE**

50ml **\$9.00**    250ml **\$35.50**  
3D Glaze 100ml **\$20.50**



**LILAC**

50ml **\$6.50**    250ml **\$22.00**



AVAILABLE IN 3D

**WHITE**

50ml **\$6.50**    250ml **\$22.00**  
3D Glaze 100ml **\$18.00**



AVAILABLE IN 3D

**CREAM**

50ml **\$6.50**    250ml **\$22.00**  
3D Glaze 100ml **\$15.50**



**SPECKLED IVORY**

50ml **\$6.50**    250ml **\$22.00**



**COFFEE**

50ml **\$6.50**    250ml **\$24.00**

# UNDER GLAZE PENCILS



**UNDERGLAZE**    **\$89.00**  
**PENCILS** Set of 12



**UNDERGLAZE**    **\$84.00**  
**PENCILS** Set of 10



# STAINS



**APRICOT**

100 gram powder **\$19.95**



**BLACK**

100 gram powder **\$24.95**



**CORAL**

100 gram powder **\$19.95**



**DARK GREEN**

100 gram powder **\$24.95**



**DELFT BLUE**

50 gram powder **\$19.95**



**FLAME**

100 gram powder **\$24.95**



**LILLY GREEN**

100 gram powder **\$19.95**



**MARINE BLUE**

100 gram powder **\$24.95**



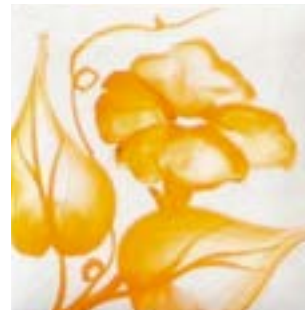
**MAUVE**

100 gram powder **\$33.95**



**OLIVE GREEN**

100 gram powder **\$33.95**



**ORANGE**

100 gram powder **\$24.95**



**RED**

50 gram powder **\$15.95**



**RED / MAROON**

100 gram powder **\$24.95**



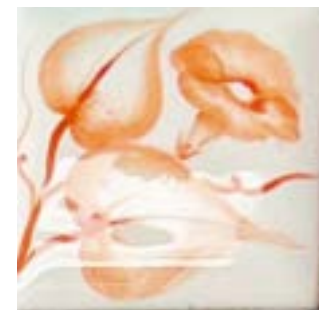
**SEA GREEN**

100 gram powder **\$19.95**



**STEEL GREY**

100 gram powder **\$24.95**



**TANGERINE**

100 gram powder **\$19.95**

## STAINS



### TURQUIOISE

100 gram powder

**\$19.95**



### YELLOW

100 gram powder

**\$19.95**

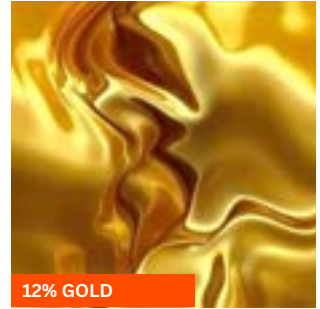


### STAIN BINDER

50ml pot

**\$7.95**

## LUSTRES



### GOLD LUSTRE

2 gram Bottle

**\$62.00**

## FIRING SERVICE

Our firing service offers artists an easy, cost-effective way to fire ceramics without a personal kiln.

### To keep costs low and service fast, please:

- Complete the Firing Services form
- Bases of glazed ware must be cleaned
- Ware must be bone dry & contain only clay
- Clays like BRT & glaze tests must be on a setter
- All ware to be marked with your makers ID
- Lids are fired on pots, unless we are told otherwise
- Discuss with us odd shaped or extra-large pieces
- Talk to us about any deadlines
- Ware related kiln/shelf damaged may incur a repair fee
- We cannot store your boxes or packing equipment

### Drop-off & Pickup:

20 Helen Street, Heidelberg West, VIC

### Interested in booking an entire kiln?

Call us to discuss on **03 7013 9025**

Click [Here](#) to view further information on our Firing Service

# EXTRUDERS



**HANDHELD EXTRUDER** \$74.90  
Hand Held with 6 Dies  
with 5 Dies



**HOLLOW DIES** \$29.95  
**HANDHELD EXTRUDER**



**BLANK DIE** \$4.95  
**HANDHELD EXTRUDER**



**EXTRUDER GUN** \$26.00  
with 20 Dies



**EXTRUDER GUN** \$15.95  
**WITH 18 DIES**



**HOLLOW DIE PLATES** from \$89.00  
**COWLEY WALL MOUNTED EXTRUDER**  
Various sizes & shapes available

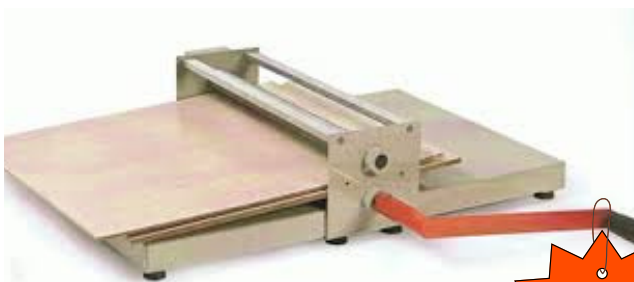


**EXTRUDER** \$369.00  
**WALL MOUNTED**  
with 4 Dies



**COWLEY EXTRUDER** \$545.00  
**WALL MOUNTED**

# SLAB ROLLERS



## TABLE TOP SLAB ROLLER

Easily control clay thickness using boards and canvas.  
Create slabs in 4 different thicknesses: 19mm, 16mm, 10mm, and 7mm (further adjustable with canvas).  
Rubber feet keep it stable, no clamping needed!

\$549



\$44.00

## CANVAS FOR FREE STANDING SLAB ROLLER

Large spare canvas for free standing slab rollers.  
1000mm x 1540mm



1,590

## FREE STANDING SLAB ROLLER

Rolls up to 52cm wide and from 70mm thick. Includes rolling canvas.

# PUG MILLS



## PETER PUGGER PUG MILLS

A Reliable and Efficient Choice for Clay Preparation  
Peter Pugger Pugmills are ideal for mixing, de-airing, and reclaiming clay. Designed for hobbyists and professionals alike, they offer consistent results and come in a range of sizes to suit any studio.



## FIRED UP PUG MILL TC90

Introducing the Fired Up Pug Mill TC90s, an affordable and efficient solution for clay preparation. With a 200–400kg/hr pugging rate, it wedges and de-airs clay for consistent results. Compact, sturdy, and runs on standard power with a 1.5–2.2kW motor and 0.55kW vacuum pump.



**\$495.00**

## PUG MILL PLATFORM

A handy receiving platform for clay from your pug mill.

# BALL MILLS



## FIRED UP BALL MILLS - SINGLE & DOUBLE (5L)

An affordable solution for grinding materials into fine particles.

Our Fired Up Ball Mills are designed to effectively break down materials like clay or glaze components into fine powders. Simply place the materials into the rotating jar along with porcelain balls. As the jar rotates, the porcelain balls pulverize the materials, resulting in a fine, uniform powder. Ball mills are versatile; they can refine a single material or be used to mix multiple materials while pulverizing them, offering an efficient and reliable milling process.



# REFRACTORY MATERIALS

## CERAMIC FIBRE:

Name	Info	Price
Paper	3mm thick x 610mm wide	\$18 per metre
Paper	4mm thick x 610mm wide	\$23 per metre
Paper	6mm thick x 610mm wide	\$34 per metre
Blanket	25mm thick x 610mm wide	\$28 per metre
Full Blanket Roll	25mm x 610mm x 7200mm	\$162 per roll
Board	20mm thick x 600mm x 1000mm	\$84 per sheet
Board	50mm thick x 600mm x 1000mm	\$149 per sheet

## ELEMENT WIRE:

Name	Thickness of wire	Price per metre
Kanthal A1	1.2mm	\$10
Kanthal A1	1.4mm	\$10
Kanthal A1	1.6mm	\$10
Kanthal A1	1.8mm	\$11
Kanthal A1	2.0mm	\$11
Kanthal A1	2.4mm	\$12
Kanthal A1	2.65mm	\$12
Kanthal A1	3.0mm	\$15
Kanthal A1	3.5mm	\$20
Kanthal A1	4.0mm	\$22

## KILN BUNGS:

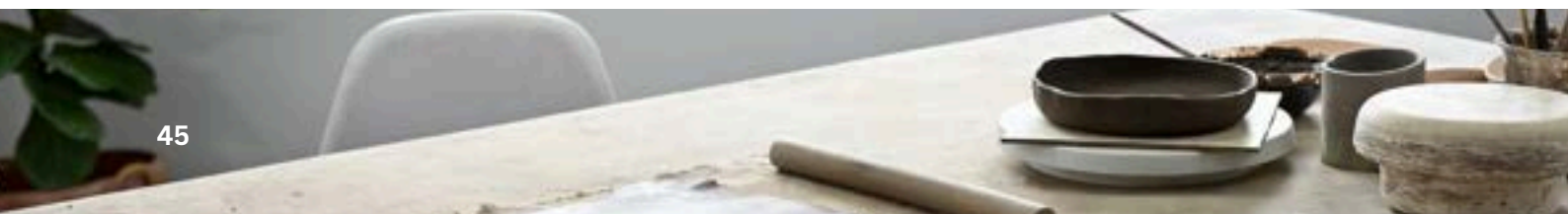
Name	Info	Price
Vent Tile	Kiln roof damper tile	\$13
Top Loading	For top loading kilns	\$11
Small Front Loading	For front loading kilns	\$19
Large Front Loading	For front loading kilns	\$30
Pottery crafts	Small replacement	\$48
Pottery crafts	Large replacement	\$66

## KILN BRICKS:

Name	Info	Price
JM23	Light Weight Insulating Fire Brick	\$4.50 each
JM26	Light Weight Insulating Fire Brick	\$5.20 each
JM28	Light Weight Insulating Fire Brick	\$5.90 each

## MISCELLANEOUS:

Name	Info	Price
Element Pins	20 per pack	\$16
Fibre Lid seals	Send us your size requirements	Starts from \$44
QF180	500ml	\$44
Fibre Adhesive	500ml	\$22
Blakite Mortar	500ml	\$22



# GIFT SETS & VOUCHERS



## UNDERGLAZE PRIMARY COLORS STARTER SET \$35.00

This great starter kit includes some vibrant primary colours along with black & white, which can be mixed to make a huge range of colors.

- 1 x 50ml Red
- 1 x 50ml Blue
- 1 x 50ml Yellow
- 1 x 50ml White
- 1 x 50ml Black

GIFT  
WRAPPING  
AVAILABLE



## UNDERGLAZE STARTER SET \$65.00

Unleash your creativity with our specially curated Underglaze Starter Kit—perfect for beginners and hobbyists alike. This set has all the essentials to get you started.

- Pottery Brushes set of 10
- 2.5cm Hake Brush
- Clear Gloss brush on Glaze
- You'll receive five 50ml underglazes: one each of red, blue, yellow, white, and black



## GLAZE STARTER SET \$135.00

This glaze starter kit is the perfect gift for the early career potter and includes:

- Choose 3 of our 1kg powder Midfire coloured glazes
- Clear Gloss Midfire Glaze 1kg powder
- Pehatine 500mls
- Scoop Set
- 2.5cm & 7.5cm Hake brushes
- Small Siphon Blower
- All in a 10L Lidded Bucket

Just add clay for the perfect gift!



## HAND BUILDING STARTER SET \$50.00

This hand building starter set includes:

- Set of 8 pottery tools
- Small extruder gun, &
- Small facet cutter

Add some clay for the perfect gift for the creative person in your life.



## POTTERY STARTER SET \$80.00

This pottery starter kit includes:

- Set of 8 Pottery Tools
- 2.5cm Hake Brush
- Clear Gloss brush on Glaze
- Plus five 50ml underglazes: one each of red, blue, yellow, white, and black - which can be mixed to make a huge range of colors.



## GIFT VOUCHER NOT SURE WHAT TO BUY?

Let them choose with a Fired Up Kilns Voucher

The perfect gift for pottery enthusiasts, creative minds, or anyone looking to explore something new!

- Convenient: Purchase easily online.
- Flexible: Redeemable in-store or online.
- Versatile: Suitable for any occasion.



Send your completed form to  
[sales@firedupkilns.com.au](mailto:sales@firedupkilns.com.au)

Your Details		Notes or Instructions
Name:		
Company Name:		
Address:		
Town:		
State & Postcode:		
Phone:		
Email:		

[illegible]

Delivery or Pick-up?		Date:	
----------------------	--	-------	--

**Once we receive your order, we will calculate postage costs if required and email you an invoice.**

## Fired Up Kilns

20 Helen Street, Heidelberg West, Victoria, 3081, Australia

hello@firedupkilns.com.au Phone: +61 (03) 7013 9025 ABN: 365 984 307 89

www.firedupkilns.com.au



**FIRED UP KILNS**  
*and pottery supplies*



Please leave us a



Review

**Price and Color Disclaimer:**

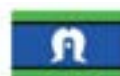
Prices and colors in this catalogue are subject to change and may vary. While we strive to ensure accurate pricing, adjustments may be necessary (refer to our website for current pricing). Please note that glazes seen in the photos may vary slightly in color and appearance.



**FIRED UP KILNS**  
*and pottery supplies*

03 7013 9025 or 0473 748 870  
hello@firedupkilns.com.au

Drop in and say hello  
20 Helen Street, Heidelberg West. VIC. Australia  
[firedupkilns.com.au](http://firedupkilns.com.au)



Fired Up Kilns works from the lands of the Wurundjeri Woi Wurrung and Bunurong peoples of the Kulin Nation and pay our respects to their Elders past and present.

We also acknowledge the Elders, Ancestors, cultures and heritage of all Aboriginal and Torres Strait Islander Nations.