



FIRED ^{UP} KILNS

and pottery supplies

CATALOGUE



firedupkilns.com.au
03 7013 9025
hello@firedupkilns.com.au

20 Helen Street
Heidelberg West Vic 3081
Australia

CONTENTS

03 Kilns

12 Kiln Furniture

17 Kiln Accessories

20 Cones

21 Pottery Wheels

24 Pottery Equipment

26 Pottery Tools

30 Clay, Glaze & Stains

45 Extruders

46 Slab Rollers

47 Mills

48 Refractory Materials

49 Gifts

50 Other

Top Loading	03
Front Loading	08
Raku	11
Kiln Shelves	12
Props / Stackers & Setters	14
Bead & Pendant Racks	15
Furniture Sets	16
Elements	17
Thermocouples & Controllers	18
Ventmasters & Spare Parts	19
Orton Pyrometric Cones	20
Cowley Potters Wheel	21
Fired Up PW-DC Pottery Wheels	22
Shimpo Pottery Wheels	23
Sieves, Tongs, Bats, Banding Wheels & more	24
Pottery Tools, Sponges, Trimming Tools & more	26
Clay & Slip	30
Mid-Fire Glaze	31
Amaco	33
Stoneware, Raku & Earthenware	35
Underglaze	36
Stains	42
Lustres & Decorating Slip	43
Handheld, Wall Mounted & Accessories	45
Table Top	46
Freestanding	46
Peter Pegger & Fired Up Pug Mills	47
Ball Mills	47
Ceramic Fire, Element Wire	48
Kiln Bungs, Kiln Bricks, Miscellaneous	48
Gift Vouchers	49
Starter Sets	49
Order Form	50
Contact Us	51

TOP LOADING KILNS

PLUG & FIRE

The Plug & Fire is as easy as the name suggests, just plug it in, to begin firing your small pots, jewellery, or test tiles. It arrives with everything you need (controller & furniture), you just plug it into a normal power-point and start firing. Made in the USA by our partners at L&L Kilns.

KEY FEATURES

- This kiln can fire to Cone 10 on a standard power point
- Extra-insulated sides with 6cm K23 bricks and 2.5cm of backup insulation; Top & Bottom are 7.5cm K23 bricks
- Kiln plugs into a separate control panel with power and thermocouple wire jack
- Door safety switch shuts off power to the elements when the door is opened
- Hard ceramic element channels
- Arrives in 2 boxes with clear assembly instructions

The GENESIS 2.0 Mini Touchscreen controller includes a touchscreen interface and WIFI connectivity. The intuitive interface is easy to use and understand. A free phone app allows you to monitor your kiln remotely.



	Litres (approx)	Power	Internal Dimensions mm	Supply	Price
Plug & Fire 10	13	2.4kw	Depth 230 Width 203	10 Amps Standard Power Outlet	\$2,690

TOP LOADING KILNS

FIRED UP 13

Compact, reliable, and beautifully designed, the Fired Up 13 is the perfect small kiln.

Measuring just 52cm x 60cm x 67cm externally and weighing 60kg, the Fired Up 13 is easy to position in your workspace. Its 10 Amp draw means it runs on a standard household power point, no special wiring required.

Handcrafted for Fired Up Kilns by our expert partners in Jiangxi Province—China’s legendary porcelain-making region with over a thousand years of ceramic heritage—this kiln brings tradition and modern performance together.



KEY FEATURES

- This kiln can fire to Cone 10 on a standard power point
- Lockable wheels for easy movement and storage
- Optional 3 OBSiC shelves & 9 OBSiC props can be added
- Door safety switch shuts off power to the elements when the door is opened

	Litres (approx)	Power	Internal Dimensions mm	Supply	Price
Fired Up 13	13	2.2kw	Depth 270 Width 250	10 Amps Single Phase Standard Power Point	\$2,490

TOP LOADING KILNS CRAFT RANGE

AFFORDABLE
DURABLE & RELIABLE

Introducing the Craft Kiln Range, a superior product with over 40 years of proven excellence in the market. Originating from the Netherlands, these meticulously crafted kilns have become synonymous with quality and reliability. Every Craft Kiln in our range is hand-built, ensuring the highest level of precision and attention to detail.

KEY FEATURES

- Casing made of high-quality stainless steel
- 25mm backup insulation blanket for optimal power saving
- Additional insulation plates in bottom and lid (only in the Craft *Smart* 60)
- Elements made of sustainable and durable kanthal wire
- Safe and solid connection to your controller
- Unique sturdy frame with dual heights (10cm higher or lower)
- Fitted with castors for easy movement
- S Thermocouple
- 1320°C max temp (1300°C Craft *Smart* 60)
- Comes with the Stafford ST215C Universal Controller with up to 32 programs, each with up to 32 ramp/soak segments



Craft 25	Craft 50	Craft <i>Smart</i> 60	Craft 70	Craft 100	Craft 120	Craft 150	Craft 200
25	50	60	70	100	120	150	200
2.4kw	3.6kw	4.0kw	5.8kw	6.7kw	7.2kw	8.4kw	17kw
D: 330 W: 280	D: 390 W: 395	D: 395 W: 430	D: 450 W: 430	D: 450 W: 525	D: 570 W: 525	D: 680 W: 525	D: 570 W: 650
10 Amps Standard Power Outlet	20 Amps Single Phase	20 Amps Single Phase	32 Amps Single Phase	32 Amps Single Phase	32 Amps Single Phase	36Amps on a 40 Amp Circuit	32 Amps 3 Phase
				3 Phase Option Available			
\$3,790	\$4,690	\$5,690	\$5,890	\$6,790	\$7,190	\$7,790	\$8,690

TOP LOADING KILNS NABERTHERM RANGE

MADE IN
GERMANY

Handcrafted in Germany, Nabertherm kilns deliver exceptional performance for hobbyists, workshops, and professionals. Designed for ceramic firing with temperatures up to 1300°C, they cover all firing processes from bisque to glaze. With intuitive digital controls and user-friendly operation, these kilns are perfect for every skill level.



KEY FEATURES

- **Advanced Insulation:** Three-layer insulation with light refractory bricks and energy-saving backing insulation.
- **Premium Heating Elements:** Designed with optimum wire gauge and length for extended lifespan.
- **Precise Temperature Control:** Rapid switching cycles ensure consistent and accurate firing results.
- **Sleek Design & Lightweight Build:** Attractive, practical, and easy to handle.



	Litres (approx)	Power	Internal Dimensions mm	Supply	Price
Top 45	45	2.9kw	Depth 340 Width 410	20 Amps Single Phase	\$5,990
Top 60	60	3.6kw	Depth 460 Width 410	20 Amps Single Phase	\$6,990

TOP LOADING KILNS POTTERYCRAFTS RANGE

BUILT IN THE
HOME OF POTTERY
**STOKE ON
TRENT**
IN THE UK

Manufactured in the UK, our PotteryCrafts toploaders range from 30 to 450 litres, come standard with Type R Thermocouples and are rated to 1300c. These kilns provide the durability and performance needed for a wide range of pottery techniques, ensuring consistent and reliable results every time.

KEY FEATURES

- CERA-10 controller: Advanced software for efficiency, ease of use, and safety
- Stainless steel jacket with adjustable clamps for durability
- Kanthal A1 Elements
- 101mm total insulation in side walls
- 88.5mm thick kiln lid
- Lid hinge design reduces risk of cracking during firing
- 108mm Ultralite granular insulation in the kiln floor



	Mercury 30	Aurora 40	Comet 60	Topworker 80	Topworker 120	Topworker 225	Topworker 450
Litres (approx)	30	40	60	79	118	225	450
Power	2.4kw	4.0kw	5.5kw	6.6kw	8.8kw	13kw	18.8kw
Internal Dimensions mm	Depth 230 Width 385	Depth 305 Width 400	Depth 446 Width 400	Depth 460 Width 460	Depth 690 Width 460	Depth 690 Width 650	Depth 780 Width 1060 x 690
Supply Required	10 Amps Standard Power Outlet	20 Amps Single Phase	32 Amps Single Phase	32 Amps Single Phase	40Amps Single Phase	63 Amps Single Phase	30 Amps 3 Phase
				3 Phase Option Available			
Price	\$4,540	\$5,140	\$6,190	\$7,990	\$9,490	\$11,990	\$17,490

FRONT LOADING FIRED UP 50

After years of searching for the ideal compact front-loading bench kiln, we decided to build our own.

The Fired Up 50 combines the quality of our Industry range with a space-saving design, perfect for studios and benches. Its sturdy construction, high-quality materials, and safety features make it a long-term investment for any workspace.

A powerful, reliable, and compact kiln—designed for serious makers with limited space.

**CONTACT US FOR MORE
INFORMATION OR TO PRE-ORDER**

KEY FEATURES

- 50L Firing Capacity – Great for small batches, test firings, and detailed work
- Maximum Temperature: 1300°C
- Even Heat Distribution – Kanthal A1 or Resistohm 145 elements in side-wall grooves
- Robust Build – Galvanised steel frame with marine-grade sheet metal lining
- High-Quality Insulation – Low thermal mass bricks with high-grade board backing
- Enhanced Safety – Dual contactors included to reduce the risk of over-firing
- User-Friendly Control – Includes the reliable Stafford ST315C controller



	Litres (approx)	Power	Internal Dimensions mm	Supply	Price
Fired Up 50	50	3.9kw	Height 340 Width 380 Depth 380	20 Amps Single Phase	\$6,890

FRONT LOADING POTTERYCRAFTS RANGE

Proudly manufactured in Stoke on Trent, our Pottery crafts Front Loading Kilns are available in sizes ranging from 68 to 210 litres, making them ideal for both hobbyists and professional ceramists. Whether for intricate projects or larger batches, Pottery crafts kilns provide the quality and performance you need.

KEY FEATURES

- CERA-10 controller: Advanced software for efficiency, ease of use, and safety
- Low thermal mass insulation bricks and high-grade backup insulation boards
- High quality pressed steel powder coated frame
- Kanthal A1 spiral wound elements
- Captive key interlocks
- Brick to door seal



	Fireworker 68	Heatworker 90	Heatworker 135	Lightmaster 210
Litres (approx)	68	90	135	210
Power	5.5kw	6.0kw	7.5kw	11kw
Internal Dimensions mm	Height 460 Width 400 Depth 380	Height 550 Width 420 Depth 400	Height 680 Width 420 Depth 480	Height 760 Width 460 Depth 610
Supply Required	32 Amps Single Phase	32 Amps Single Phase	40 Amps Single Phase	50 Amps Single Phase
		3 Phase Option Available		
Price	\$7,890	\$11,890	\$13,290	\$15,490

FULL KILN SPECIFICATIONS AVAILABLE ON OUR WEBSITE

INDUSTRY RANGE

Built to Last, Built for You

**Perfect for Home Studios, Classrooms
& Commercial Settings**

Solid Construction: Marine-grade stainless steel and K23 firebricks ensure durability

Expert Craftsmanship: Built by craftsman for top performance

Advanced Features: Equipped with R type thermocouples; over temperature controllers for kilns larger than 425L

Versatile Sizes: Ranging from 100 to 990 litres

Controller: Comes with the either the Stafford or RKC PZ-400 Contoller

BESPOKE KILNS MADE TO MEASURE



	Litres (approx)	Internal Dimensions	Price
INDUSTRY 100	100	440mm wide, 460mm deep, 530mm high	\$8,800
INDUSTRY 140	140	460mm wide, 484mm deep, 605mm high	\$10,450
INDUSTRY 175	176	430mm wide, 560mm deep, 710mm high	\$11,550
INDUSTRY 240	240	500mm wide, 600mm deep, 800mm high	\$14,300
INDUSTRY 285H	283	500mm wide, 600mm deep, 952mm high	\$16,200
INDUSTRY 285	283	620mm wide, 640mm deep, 730mm high	\$16,200
INDUSTRY 340	340	760mm wide, 545mm deep, 930mm high	\$17,700
INDUSTRY 395	396	630mm wide, 660mm deep, 990mm high	\$19,500
INDUSTRY 425	425	760mm wide, 545mm deep, 1080mm high	\$19,800
INDUSTRY 510	510	900mm wide, 600mm deep, 1100mm high	\$24,100
INDUSTRY 710	708	1050mm wide, 800mm deep, 900mm high	\$29,500
INDUSTRY 990	991	1050mm wide, 800mm deep, 1270mm high	\$36,950

RAKU KILN RANGE



RODERVELD PYRAMID 135L
\$3,990



INCLUDES:
120L DRUM KILN
MANUAL
GLOVES
BURNER SET
RAKU TONGS
PYROMETER
BASE KILN SHELF
3 PROPS

DRUM KILN SET
\$2,390



**HEAT RESISTANT
KILN GLOVES**
\$24.95



**GAS KILN
BURNER SET**
\$795.00



**RODERVELD
GAS BURNER**
\$1,595



KILN SHELVES - ROUND

Cordierite Mullite:			
Price		Diameter (mm)	Thickness
\$48.00	\$24 for ½ shelf	240	13mm
\$52.00	\$26 for ½ shelf	260	13mm
\$66.00	\$33 for ½ shelf	320	12mm
\$74.00	\$37 for ½ shelf	350	12mm
\$74.00	\$37 for ½ shelf	370	12mm
\$74.00	\$37 for ½ shelf	380	16mm
\$85.00	\$42.40 for ½ shelf	420	12mm
\$99.00	\$49 for ½ shelf	420	16mm
\$120.00	\$60 for ½ shelf	460	16mm
\$145.00	\$72.50 for ½ shelf	520	20mm
\$156.00	\$78 for ½ shelf	550	20mm
\$179.00	\$90 for ½ shelf	560	18mm

Oxygen Bonded Silicon Carbide (OBSiC):			
Price		Diameter (mm)	Thickness
\$44		230	10mm
\$54	\$27 for ½ shelf	250	10mm
\$77		350	10mm

Nitrogen Bonded Silicon Carbide (NBSiC):			
Price		Diameter (mm)	Thickness
\$170	\$85 for ½ shelf	320	8mm
\$380	\$190 for ½ shelf	420	8mm

PLEASE NOTE:

- Shelf thickness may vary between 1 -2mm depending on supplier.
- Cordierite Mullite shelves can be cut to size at no extra cost, OBSiC & NBSiC shelves cannot be cut.
- Bespoke shapes and sizes can be ordered in from our suppliers, allow 6 – 12 weeks.

KILN SHELVES - SQUARE

Cordierite Mullite:		
Price	Size (mm)	Thickness
\$58	280 x 340	16mm
\$38	310 x 310	12mm
\$42	330 x 330	12mm
\$60	330 x 350	16mm
\$82	330 x 440	20mm
\$86	330 x 450	20mm
\$44	350 x 350	12mm
\$66	350 x 380	16mm
\$58	400 x 400	13mm
\$68	400 x 400	16mm
\$89	400 x 400	20mm
\$96	400 x 450	20mm
\$88	400 x 500	16mm
\$110	400 x 500	20mm
\$60	420 x 420	12mm
\$89	450 x 450	15mm
\$110	450 x 450	18mm
\$115	450 x 450	20mm
\$115	450 x 470	20mm
\$120	450 x 500	20mm
\$165	450 x 600	25mm
\$125	470 x 500	20mm
\$125	500 x 500	18mm
\$148	550 x 550	20mm
\$180	550 x 550	38mm
\$185	550 x 600	25mm
\$189	610 x 610	20mm

Oxygen Bonded Silicon Carbide (OBSiC):		
Price	Size (mm)	Thickness
\$99	400 x 400	8mm
\$105	400 x 420	8mm
\$109	400 x 450	8mm
\$129	400 x 500	8mm
\$129	440 x 460	8mm
\$129	450 x 500	8mm
\$139	500 x 500	4mm
\$148	500 x 550	6mm
\$165	550 x 560	8mm

Nitrogen Bonded Silicon Carbide (NBSiC):		
Price	Size (mm)	Thickness
\$180	330 x 380	8mm
\$190	300 x 400	8mm
\$220	350 x 400	8mm
\$220	350 x 410	6mm
\$240	400 x 400	8mm

Hollow Core Shelves:		
Price	Size (mm)	Thickness
\$120	330 x 450	16mm
\$140	400 x 500	25mm
\$190	550 x 550	38mm

Sintered Silicon Carbide Shelves:		
Price	Size (mm)	Thickness
\$245	400 x 400	3mm
\$290	400 x 500	3mm

PLEASE NOTE:

- Shelf thickness may vary between 1 -2mm depending on supplier.
- Cordierite Mullite shelves can be cut to size at no extra cost, OBSiC & NBSiC shelves cannot be cut.
- Bespoke shapes and sizes can be ordered in from our suppliers, allow 6 – 12 weeks.

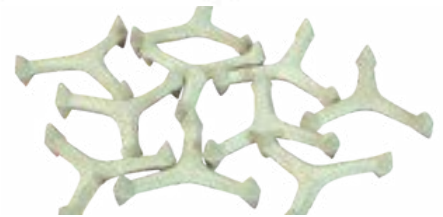
PROPS

	45 mm	50 mm
25mm	\$2.50	\$2.50
50mm	\$3.90	\$3.90
75mm	\$5.50	\$5.50
100mm	\$6.90	\$6.90
150mm	\$9.50	\$9.50
200mm	\$12.90	\$12.90

Bead Racks:

Bead Rack	\$46.00	1240°C
Bead Rack (High Fire)	\$62.00	1280°C
Pendant Rack	\$24.00	1240°C

STACKERS & SETTERS



KILN STILTS

24mm \$1.10
50mm \$2.20

30mm \$1.60
56mm \$3.80

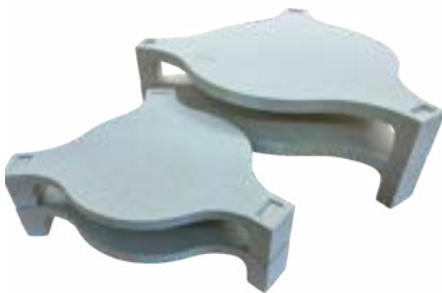


PLATE STACKERS 23 cm \$55.00
34 cm \$68.00



KILN SHELF STACKERS \$99.00



PLATE SETTER 275mm \$45.00



TILE SETTER \$44.00

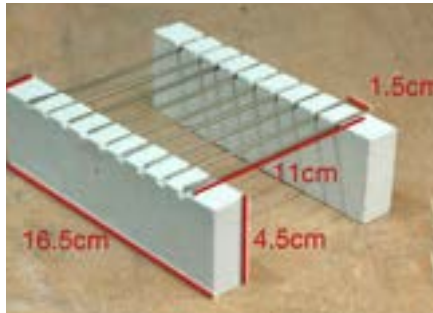
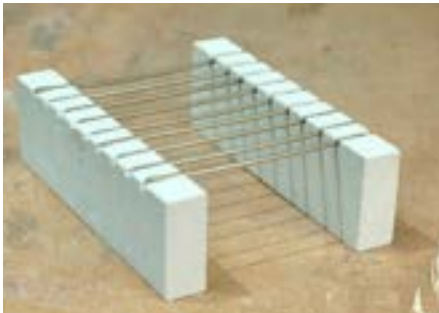


TILE STACKER Small \$24.00
Large \$32.00



SSiC PLATE SETTERS \$84.00

BEAD RACK



FIRED UP KILNS BEAD RACK \$46.00

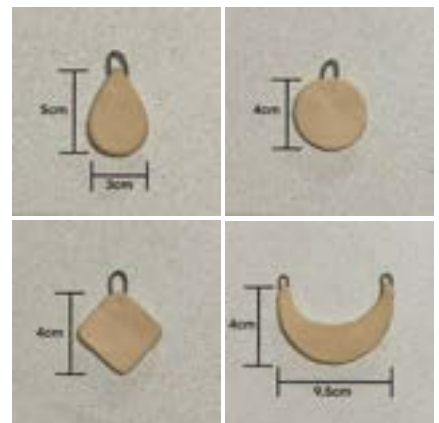
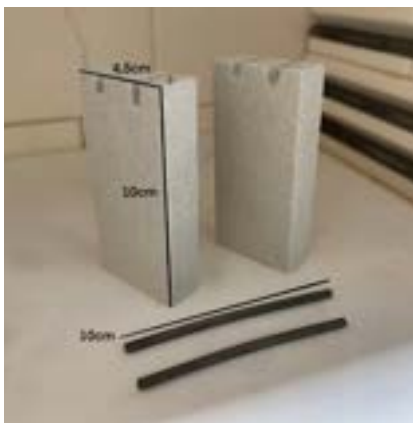
HIRE FIRE OPTION \$62.00

Ideal for firing beads and jewellery. By threading your pieces onto the wire, you can glaze the whole exterior of your piece. You can elevate these on sturdy kiln props for more clearance to hang longer pieces. Made from Cordierite Mullite with 2.3mm Kanthal A1 wires, that can be rearranged to accommodate different sized pieces. Rated to 1240°C.



TUNGSTEN WIRE BEAD RACK \$34.95

PENDANT RACK



PENDANT RACK \$24.00

Safely hang your delicate ceramic pendants for seamless firing.

10cm high, Kanthal A1 wires, 100mm grooved supports, max temp 1240°C

Recommended pendant size in picture are:

Circle - 4cm, Diamond shape - 4cm, Drop shape - 3cm wide x 5 cm high, Croissant shape - 9.5cm wide x 5.5 cm high

FURNITURE SETS

Fired Up 13	OBSiC Shelves: 3 x 200mm OBSiC Props: 9 (30mm, 40mm or 50mm configurations)	\$95
Craft 25	Shelves: 3 x 230mm + 1 bag of kiln wash Props: 3 x 25mm, 6 x 50mm, 6 x 75mm	\$205
Mercury 30	Shelves: 2 x 320mm + 1 bag of kiln wash Props: 6 x 50mm, 3 x 75mm	\$210
Aurora 40	Shelves: 3 x 350mm + 1 bag of kiln wash Props: 6 x 50mm, 3 x 75mm, 3 x 100mm	\$295
Craft 50	Shelves: 3 x 350mm + 1 bag of kiln wash Props: 3 x 25mm, 6 x 50mm, 6 x 75mm, 3 x 100mm, 3 x 150mm	\$265
Fired Up 50	Shelves: 4 x 350mm x 350mm + 1 bag of kiln wash Props: 3 x 25mm, 6 x 50mm, 6 x 75mm, 3 x 100mm, 3 x 150mm	\$340
Comet 60	Shelves: 4 x 370mm (or 380mm) + 1 bag of kiln wash Props: 6 x 50mm, 6 x 75mm, 3 x 100mm, 3 x 150mm	\$375
Craft 60	Shelves: 4 x 350mm + 1 bag of kiln wash Props: 6 x 25mm, 6 x 50mm, 6 x 75mm, 3 x 100mm, 3 x 150mm	\$405
Fireworker 68	Shelves: 5 x 350mm / 350mm + 1 bag of kiln wash Props: 6 x 25mm, 6 x 50mm, 6 x 75mm, 3 x 100mm, 3 x 150mm	\$415
Craft 70	Shelves: 4 x 380mm + 1 bag of kiln wash Props: 6 x 25mm, 6 x 50mm, 6 x 75mm, 6 x 100mm, 3 x 150mm	\$395
Topworker 80	Shelves: 4 x 420mm + 1 bag of kiln wash Props: 6 x 50mm, 6 x 75mm, 3 x 100mm, 3 x 150mm	\$455
Heatworker 90	Shelves: 5 x 380mm / 350mm + 1 bag of kiln wash Props: 3 x 25mm, 9 x 50mm, 9 x 75mm, 6 x 100mm, 3 x 150mm	\$615
Craft 100	Shelves: 4 x 455mm + 2 bags of kiln wash Props: 6 x 25mm, 6 x 50mm, 6 x 75mm, 3 x 100mm, 3 x 150mm	\$530
Industry 100	Shelves: 5 x 400mm / 400mm + 2 bags of kiln wash Props: 3 x 25mm, 9 x 50mm, 9 x 75mm, 3 x 100mm, 3 x 150mm, 3 x 200mm	\$480
Craft 120	Shelves: 5 x 455mm + 2 bags of kiln wash Props: 6 x 25mm, 9 x 50mm, 6 x 75mm, 6 x 100mm, 3 of 150mm	\$650
Topworker 120	Shelves: 6 x 420mm + 2 bags of kiln wash Props: 9 x 25mm, 9 x 50mm, 15 x 75mm, 3 x 150mm	\$730
Heatworker 135	Shelves: 5 x 380mm / 430mm + 2 bags of kiln wash Props: 3 x 25mm, 9 x 50mm, 9 x 75mm, 6 x 100mm, 6 x 150mm, 3 x 200mm	\$730
Industry 140	Shelves: 6 x 400mm / 400mm + 2 bags of kiln wash Props: 3 x 25mm, 9 x 50mm, 9 x 75mm, 6 x 100mm, 3 x 150mm, 3 x 200mm	\$610
Craft 150	Shelves: 6 x 455mm + 2 bags of kiln wash Props: 6 x 25mm, 9 x 50mm, 6 x 75mm, 6 x 100mm, 3 x 150mm, 3 x 200mm	\$800
Industry 175	Shelves: 5 x 380mm / 500mm + 2 bags of kiln wash Props: 3 x 25mm, 9 x 50mm, 9 x 75mm, 6 x 100mm, 6 x 150mm, 3 x 200mm	\$730
Topworker 190	Shelves: 5 x 520mm + 2 bags of kiln wash Props: 12 x 50mm, 12 x 75mm, 12 x 100mm, 6 x 150mm, 6 x 200mm	\$799
Industry 240 & 285H	Shelves: 6 x 400mm / 500mm + 2 bags of kiln wash Props: 6 x 25mm, 12 x 50mm, 12 x 75mm, 6 x 100mm, 6 x 150mm, 3 x 200mm	\$820
Industry 285	Shelves: 5 x 550mm / 550mm + 2 bags of kiln wash Props: 6 x 25mm, 12 x 50mm, 12 x 75mm, 6 x 100mm, 6 x 150mm, 3 x 200mm	\$760
Craft 200	Shelves: 6 x 570mm + 2 bags of kiln wash Props: 6 x 25mm, 9 x 50mm, 6 x 75mm, 6 x 100mm, 3 x 150mm, 3 x 200mm	\$830

KILN ELEMENTS

Top Loading

Price	Model	Amperage
\$190	Plug & Fire 10	10amp
\$240	Craft 25	10amp
\$330	Craft 50	15amp
\$390	Craft 60	16.6amp
\$460	Craft 70	26 amp
\$580	Craft 100	28amp
\$630	Craft 120	30 amp
\$720	Craft 150	35amp
\$810	Craft 200	3 x 25amp

PotteryCrafts Front Loading

Price	Model	Amperage
\$260	Pluto 9	13amp
\$420	Fireworker 50	17amp
\$590	Fireworker 68	23amp
\$760	Heatworker 90	25amp
\$850	Heatworker 135	40amp
\$960	Lightmaster 210	48amp

PotteryCrafts Top Loading

Price	Model	Amperage
\$240	Mercury 30	10amp
\$390	Aurora 40	16.6amp
\$490	Comet 60	23amp
\$560	Topworker 80	28amp
\$720	Topworker 120	37amp
\$860	Topworker 190	63amp
\$910	Topworker 225	63amp
POA	Topworker 450	82amp

Industry Range

Price	Model	Amperage
\$560	Industry 100	1 x 25amp
\$640	Industry 140	1 x 34amp or
\$640	Industry 140	2 x 17amp
\$720	Industry 175	1 x 40amp or
\$720	Industry 175	2 x 20amp
\$860	Industry 240	2 x 23amp
\$970	Industry 285H	3 x 19amp
\$970	Industry 285	3 x 19amp
\$1,060	Industry 340	3 x 24amp
\$1,290	Industry 395	3 x 25amp
\$1,490	Industry 425	3 x 30amp
\$1,830	Industry 510	3 x 32amp
\$2,260	Industry 710	3 x 40amp
POA	Industry 990	3 x 61amp

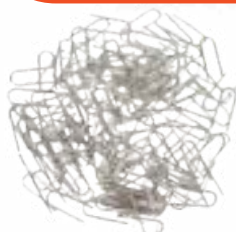
Earlier Studio Range

Price	Model	Amperage
\$460	Studio 1.7	20amp
\$530	Studio 2.7	22.75amp
\$600	Studio 3.4	25amp
\$640	Studio 5.2	30amp
\$760	Studio 6.0	40amp
\$900	Studio 7.0	48amp
\$960	Studio 8.6	60amp

Earlier Craft Range

Price	Model	Amperage
\$240	Craft 1.0	10amp
\$360	Craft 1.5	15amp
\$360	Craft 1.5W	15amp
\$470	Craft 2.2	20amp
\$540	Craft 2.9	22.75amp
\$660	Craft 3.7	25amp
\$780	Craft 4.6	30amp
\$810	Craft 5.8	36amp

Need an element thats not listed?
Click here to visit our website to learn
about our ELEMENT WINDING service.



ELEMENT PINS \$16.00
Pack of 20

THERMOCOUPLES



K-TYPE \$48.00

K-type thermocouple unsheathed.
The standard size is 200mm, however we can shorten on request.



R-TYPE from \$240.00

Available in different lengths.
Rated to 1400c.



S-TYPE from \$260.00

Fits all of our current CRAFT Range of kilns. Standard size is 125mm.



COMPENSATING CABLE

K-TYPE \$6.00 per metre

Suitable for K-Type Thermocouples



COMPENSATING CABLE

R-TYPE \$6.00 per metre

Suitable for R-Type Thermocouples

CONTROLLERS



STAFFORD \$995.00
CONTROLLER ST315C



STAFFORD 215C \$1295.00
WIFI OPTION \$1495.00



CONNECTOR \$199.00
FOR STAFFORD 215C



PYROMETER \$79.00

VENT MASTERS & SPARE PARTS



ORTON VENT MASTER KIT \$965.00

Newest and most advanced. Easy to install & prevents fumes from entering your workspace



ORTON VENT MASTER EXPANSION KIT \$505.00

Allows you to vent a second kiln using your Orton Ventmaster



HIGH TEMP FLEXIBLE RUBBER CONDUIT \$88.00 per metre

110mm wide, flexible conduit suitable for venting kiln exhaust across distance



CERAMIC FIBRE LID or DOOR SEALS from \$44.00



KILN Bungs from \$11.00

We stock kiln bungs for our kiln range & custom-make sizes on request



REFRACTORY MORTAR & ADHESIVES from \$22.00



VENT TILE \$13.00

Replacement damper tile for the vent on top of your kiln.



ELEMENT PINS pack of 20 \$16.00

High temp wire element pins to keep you elements safely in place



CONTACTORS from \$74.00

PYROMETRIC CONES

Temperature Equivalents Large Regular Orton Pyrometric Cones

			60°C/hr Heating Rate	150°C/hr Heating Rate
			Medium Firing Speed	Fast Firing Speed
Bisque	Earthenware	Cones #		
		09	917	928
		08	942	954
		07	973	985
		06	995	1011
		05	1030	1046
		04	1060	1070
		03	1086	1101
		02	1101	1120
		01	1117	1137
		1	1136	1154
		2	1142	1162
Mid-Fire	Stoneware	3	1152	1168
		4	1160	1181
		5	1184	1205
		6	1220	1241
		7	1237	1255
8		1247	1269	
9		1257	1278	
10		1282	1303	
Porcelain		11	1293	1312
		12	1304	1324

PRICE

Lots of 10 **\$12.00** Lots of 20 **\$22.00** Lots of 50 **\$40.00**

Wire Cone Holders (Pack of 3) **\$5.95**



COWLEY POTTERS WHEEL



Whether you're a beginner or a pro, we've got the perfect pottery wheel for you!

Cowley Double Drive Potters Wheel

Made in New Zealand, the versatile Cowley Double Drive Wheel has a sturdy 280mm aluminium wheel head, adjustable speed, and a 20kg weight capacity. Its double-drive system delivers torque for large pots. Its compact and lightweight design makes it perfect for demonstrations and easy storage.



FIRED UP PW-DC WHEELS



FIRED UP PW-DC TABLE-TOP

Perfect for beginners and small spaces, featuring a 1/3 HP motor, 300mm wheel head, removable splash pan, 300RPM bi-directional rotation, and foot pedal speed control.



FIRED UP PW-DC ADJUSTABLE LEGS

Features adjustable legs (461-661mm), a powerful 3/4 HP motor that handles 45kg of clay, and a quiet, vibration-free design. It includes a 355mm wheel head, removable splash pan, and 300RPM bi-directional rotation.



FIRED UP PW-DC

This pottery wheel has a 3/4 HP motor with great torque, handles 45kg of clay, runs quietly, and features a 355mm wheel head, removable splash pan, and 300RPM bi-directional rotation.



PW-DC SPLASH PAN CLIPS (Set of 2) **\$18.00**



PW-DC BAT PINS (Set of 2) **\$12.50**

SHIMPO POTTERY WHEELS



\$1,290

FIRED UP PW-DC POTTERY WHEEL

Portable and lightweight, with a 10kg centering capacity. It features an electronic speed controller, a built-in tool area, a leak-proof splash pan, two bats, and a detachable foot pedal. Operating with a 1/8 HP DC motor, it accommodates both left and right-handed users.



\$1,749

SHIMPO RK-55 POTTERY WHEEL

Lightweight and portable, the Shimpo RK-55 is perfect for beginners and classrooms. It features a belt-driven design, remote foot pedal, two-piece splash pan, and built-in worktable. With a smooth, quiet motor, automatic belt tension, and a stable three-leg design, it offers reliable performance with a 10kg centering capacity.



\$2,390

SHIMPO WHISPER RK-3T

Powerful and responsive, with high torque at all speeds, operates quietly at 30 decibels, can be used as a tabletop, and features adjustable telescopic legs with three settings for all throwing positions.

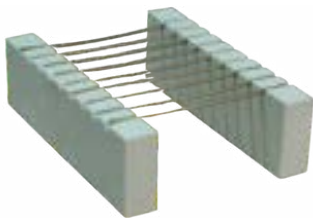


\$2,890

SHIMPO WHISPER RK-3E/VL

Features a powerful brushless Direct Drive motor for high torque, adjustable legs for stability, an electronic speed controller, a two-piece splash pan, a built-in worktable, and a detachable foot pedal, accommodating a 45kg centering capacity.

POTTERY EQUIPMENT



BEAD RACK \$46.00
High Fire Option \$62.00



PENDANT RACK \$24.00



TUNGSTEN WIRE BEAD RACK \$98.00



ADJUSTABLE POTTERS STOOL \$98.00



KILN WASH
1kg \$16.00
5kg \$64.00



POTTERS PLASTER from \$5.20



WAX RESIST
500ml \$15.00
1 Litre \$24.00
5 Litre \$98.00



PEHATINE 500ml \$22.50
BRUSING MEDIUM



RAKU TONGS \$49.00
80cm Toothed
104cm Non Toothed



POTTERS APRON \$30.00



WIRE CONE HOLDERS Pack of 3 \$5.95



BAT CHAMOIS \$8.95



BAT INSERTS X 5
\$33.00



BAT SYSTEM \$76.00



PLYWOOD BATS
300mm (6mm thick) \$17.80
350mm (6mm thick) \$21.00



PLASTIC BAT \$15.95

POTTERY EQUIPMENT



FIRED UP TURNING GRIP
\$95.00



KILN STILTS from \$1.10



BANDING WHEELS

180mm \$77.00
250mm \$139.00
300mm \$210.00



ALUMINIUM BANDING WHEELS

150mm \$29.95 200mm \$37.95
250mm \$49.95 300mm \$59.95



WEDGING ANGLE. \$39.95
Table Mounted



PLASTER BAT KIT \$22.50



ELEMENT WIRE
High Temp from \$10.00



RUB BRICK \$34.00



SIEVE/MESH BOWL \$20.00
Mesh Size 60, 80, 100 & 120 Available



ROTARY BRUSH \$52.00
SIEVE ATTACHMENT



KILN BUNGS
from \$10.00



SCOOPS from \$3.00



PYROMETER \$79.00



CANVAS \$44.00
FOR SLAB ROLLERS



HEAT RESISTANT \$24.95
KILN GLOVES



ELEMENT PINS
High Temp pack of 20 \$16.00

POTTERY EQUIPMENT



REFRACTORY from **\$22.00**
MORTARS & ADHESIVES



VENT TILE **\$13.00**



PLASTIC from **\$15.95**
BUCKET



ELECTRIC GLAZE **\$375.00**
MIXER



PYROMETRIC from **\$12.00**
CONES



HIGH TEMP **\$88.00**
RUBBER CONDUIT



REPLACEMENT **\$44.00**
CERAMIC FIBRE LID



EXTRUDER GUN **\$26.00**
with 20 Dies



EXTRUDER **\$26.95**
HAND HELD WITH 6 DIES



HOLLOW DIES **\$29.95**
HANDHELD EXTRUDER



BLANK DIE **\$4.95**
HANDHELD EXTRUDER



EXTRUDER GUN **\$15.95**
WITH 18 DIES



EXTRUDER WALL **\$369.00**
MOUNTED with 4 Dies



COWLEY EXTRUDER **\$545.00**
WALL MOUNTED



HOLLOW DIE PLATES - COWLEY WALL from **\$89.00**
MOUNTED EXTRUDER (Various shapes & sizes)

POTTERY TOOLS



GLAZE POURING LADLE

Small (40ml) **\$22.00**
Medium (120ml) **\$22.00**
Large (180ml) **\$35.00**



FACET CUTTERS

Small Straight Wire **\$9.95**
Large Straight Wire **\$11.95**
Large Wiggle Wire **\$11.95**



WEDGING ANGLE. **\$39.95**

Table Mounted



HAKE BRUSHES **from \$5.95** HORSESHOE



HAKE BRUSHES **from \$5.95** TRADITIONAL



POTTERY BRUSHES **from \$3.95**



LOOP TOOLS **\$16.95**



CLAY CUTTER **\$26.00** WITH ROLLER



POTTERY TOOLS **\$26.95** IN WOODEN BOX



POTTERY TOOLS **\$25.95** IN ZIP LOCK BAG



ULTIMATE **\$32.95** POTTERY TOOLS SET



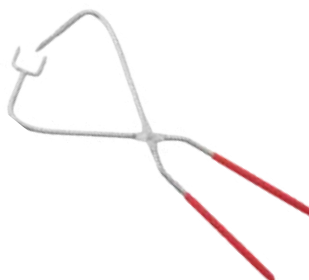
ASSORTED CLAY **from \$15.95** CARVING TOOLS



PLATE DIPPING **\$15.95** TONGS



SPRING LOADED **\$22.95** TONGS



BUDGET **\$10.95** DIPPING TONGS



DIPPING TONGS **\$16.95**

POTTERY TOOLS



RAKU TONGS \$49.00
80cm Toothed
104cm Non Toothed



SIPHON BLOWER
Small \$19.95
Large \$19.95



POTTERY SPONGE \$1.80



SUPER ABSORBANT SPONGE \$7.95



SPONGES ON STICK Set of 5 \$10.95



CLAY ROLLING PIN \$5.95



UNDERGLAZE MIXING PALETTE \$3.00



CLAY SCRAPER \$9.95



FIRE UP TURNING GRIP \$95.00



TUNGSTEN STEEL TRIMMING TOOL SET \$14.95



TUNGSTEN TRIMMING TOOLS \$28.95



WOODEN POTTERY TOOLS
5 Piece \$4.95
10 Piece \$8.95



HOLE PUNCHES \$12.95
Set of 4 - Full Circle & 1/2 Available



CALIPERS from \$9.95



KIDNEYS Set of 3 \$6.95



HEAT RESISTANT KILN GLOVES \$24.95

POTTERY TOOLS



WOODEN PADDLE \$8.95



HANDLE MOLDS
Set of 9 **\$19.95**



LETTER STAMPS \$14.95



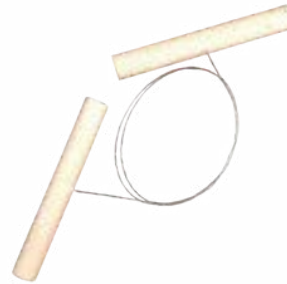
STAINLESS STEEL HARP \$6.95



STEEL RIBS \$12.95
Set of 10



SHAPED RIBS \$24.95
7 Assorted Shapes



WIRE CLAY CUTTER \$3.00



TURNING TOOLS \$5.95



SLIP TRAILER SET \$15.95



SLIP TRAILER BULB \$7.95



POTTERY NEEDLE \$1.95



WHEEL THROWING GAUGE \$42.00



**FOLLOW US
ON
SOCIAL MEDIA**



CLAY



**AUDREY BLACKMAN
PORCELAIN**

From **\$73.70**
Firing Temp 1220° - 1280°C



BASALT FLECK

From **\$30.70**
Firing Temp 1200° - 1270°C



**BIRCH WHITE SMOOTH
STONEWARE**

From **\$18.60**
Firing Temp 1150° - 1280°C



**BUFF EARTHERWARE
STONEWARE**

From **\$17.80**
Firing Temp 1120° - 1240°C



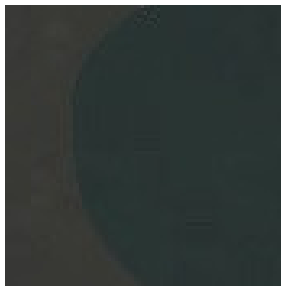
**IRONSTONE
PLASTIC**

From **\$23.65**
Firing Temp 1140° - 1280°C



**PALE BUFF SMOOTH
STONEWARE**

From **\$29.60**
Firing Temp 1120° - 1280°C



**PROFESSIONAL SMOOTH
BLACK**

From **\$60.70**
Firing Temp 1140° - 1260°C



**RAKU CRANK
MODELLING CLAY**

From **\$20.80**
Firing Temp 1060° - 1280°C



**RED TERRACOTTA
(LOW FIRE)**

From **\$17.80**
Firing Temp 1020° - 1160°C



G&S SPECIAL RED CLAY

From **\$17.00**
Firing Temp: 1000 - 1240°C



**WHITE PRODUCTION
STONEWARE**

From **\$29.60**
Firing Temps on website



**STONEWARE SPECIAL
FLECK**

From **\$29.50**
Firing Temp 1120° - 1280°C



RUSTIC STONEWARE

From **\$17.80**
Firing Temp 1180° - 1280°C



SUPER WHITE STONEWARE

From **\$24.90**
Firing Temp 1220° - 1280°C



WHITE STONEWARE

From **\$32.95**
Firing Temp 1240° - 1280°C



PORCELAIN

From **\$52.95**
Firing Temp 1240° - 1260°C

MID-FIRE GLAZE



BANKSIA
500ml Brush on **\$15.95**
1kg Powder **\$17.25**



BILLABONG
500ml Brush on **\$15.95**
1kg Powder **\$17.25**



CLEAR GLOSS
500ml Brush on **\$14.95**
1kg Powder **\$14.95**



CLEAR MATT
500ml Brush on **\$14.95**
1kg Powder **\$14.85**



DAINTREE
500ml Brush on **\$16.95**
1kg Powder **\$17.95**



EUCALYPTUS
500ml Brush on **\$15.95**
1kg Powder **\$16.95**



GALAH
500ml Brush on **\$18.95**
1kg Powder **\$28.95**



KOALA
500ml Brush on **\$15.95**
1kg Powder **\$17.25**



METALIC BLACK
500ml Brush on **\$16.95**



METALIC BRONZE
500ml Brush on **\$19.95**



NATIVE IRIS
500ml Brush on **\$15.95**
1kg Powder **\$15.95**



OPAL
500ml Brush on **\$15.50**
1kg Powder **\$15.95**



OUTBACK
500ml Brush on **\$15.50**
1kg Powder **\$15.95**



ROSELLA
500ml Brush on **\$18.95**
1kg Powder **\$28.95**



SHINO STYLE
500ml Brush on **\$25.95**
500g Powder **\$25.95**



TOMATO RED
500ml Brush on **\$15.95**
1kg Powder **\$19.95**

MID-FIRE GLAZE



WHITE GLOSS
500ml Brush on **\$15.50**
1kg Powder **\$15.95**



WATTLE
500ml Brush on **\$16.95**
1kg Powder **\$17.95**



WISTERIA
500ml Brush on **\$15.50**
1kg Powder **\$16.25**



PEHATINE
Brushing Medium 500ml **\$22.50**

GIFT
WRAPPING
AVAILABLE



GLAZE STARTER SET

\$135.00

This glaze starter kit is the perfect gift for the early career potter and includes:

- Choose 3 of our 1kg powder Midfire coloured glazes
- Clear Gloss Midfire Glaze 1kg powder
- Pehatine 500mls
- Scoop Set
- 2.5cm & 7.5cm Hake brushes
- Small Siphon Blower
- All in a 10L Lidded Bucket

Add some clay for the perfect gift for the creative person in your life



AMACO GLAZE



ARTIC BLUE
472ml

\$39.00



BLUE RUTILE
472ml

\$39.00



CHUN PLUM
472ml

\$42.00



DARK STAR
472ml

\$59.00



FLOATING LAVENDER
472ml

\$48.00



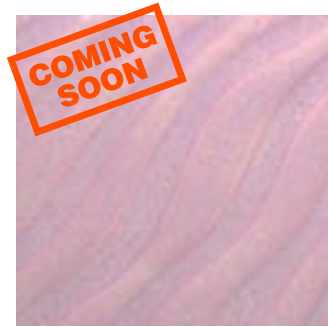
HONEY FLUX
472ml

\$39.00



INDIGO FLOAT
472ml

\$39.00



LUNAR PINK
472ml

\$48.00



MIDNIGHT RUN
472ml

\$39.00



MIXING CLEAR
472ml

\$39.00



NIGHT RAIN
472ml

\$48.00



OATMEAL
472ml

\$39.00



OBSIDIAN
472ml

\$39.00



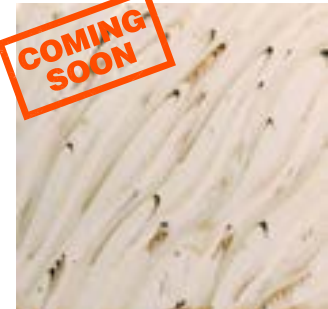
PALLADIUM
472ml

\$42.00



RAINFOREST
472ml

\$39.00



RIVER BIRCH
472ml

\$39.00

AMACO GLAZE

COMING
SOON



SAGUARO
472ml

\$39.00

COMING
SOON



SAPPHIRE FLOAT
472ml

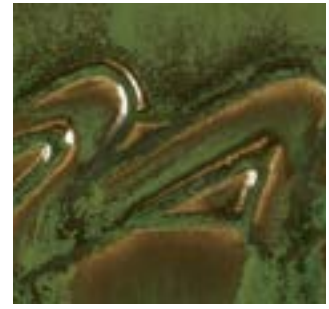
\$42.00

COMING
SOON



SATURATION GOLD
472ml

\$39.00



SEAWEED
472ml

\$39.00

COMING
SOON



SMOKE
472ml

\$39.00

COMING
SOON



SMOKEY MERLOT
472ml

\$42.00

COMING
SOON



SNOW
472ml

\$39.00

COMING
SOON



SOLAR FLARE
472ml

\$59.00

COMING
SOON



STORM
472ml

\$39.00

COMING
SOON



TANGELO
472ml

\$39.00



TEXTURED TURQUOISE
472ml

\$39.00



STONEWARE GLAZE



AMAZONITE
500ml Brush on **\$15.95**
1kg Powder **\$16.95**



AMBER
500ml Brush on **\$15.95**
1kg Powder **\$16.95**



AVENTURINE
500ml Brush on **\$15.95**
1kg Powder **\$16.95**



COPAL
500ml Brush on **\$15.95**
1kg Powder **\$16.95**



GALENA
500ml Brush on **\$15.95**
1kg Powder **\$16.95**



HOWLITE
500ml Brush on **\$15.95**
1kg Powder **\$16.95**



INDICOLITE
500ml Brush on **\$15.95**
1kg Powder **\$16.95**



KYANITE
500ml Brush on **\$15.95**
1kg Powder **\$16.95**



LEGRANDITE
500ml Brush on **\$16.95**
1kg Powder **\$18.95**



MALACHITE
500ml Brush on **\$15.95**
1kg Powder **\$16.95**



SAPPHIRE
500ml Brush on **\$15.95**
1kg Powder **\$16.95**



WHITE GLOSS



CLEAR GLOSS
500ml Brush on **\$15.95**
1kg Powder **\$16.95**



RAKU BASE GLAZE
1kg Powder **\$16.95**



CLEAR GLOSS EARTHENWARE GLAZE
1kg Powder **\$19.90**

RAKU GLAZE

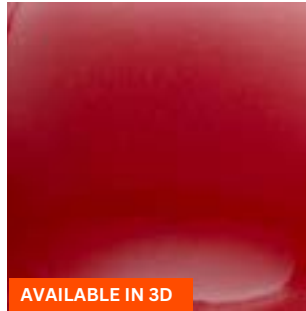
EARTHENWARE

UNDER GLAZE



PIMENTO

50ml **\$11.00** 250ml **\$44.00**



AVAILABLE IN 3D

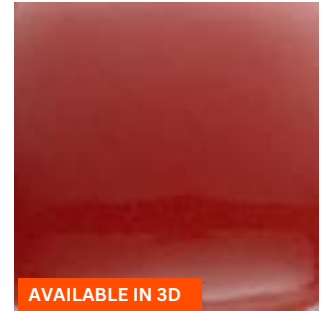
CHERRY RED

50ml **\$9.00** 250ml **\$38.50**
3D 100ml **\$19.00**



RED HOT

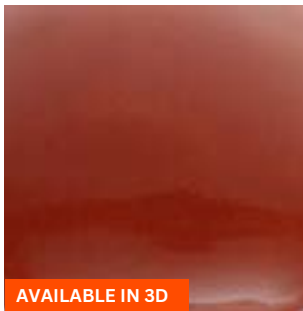
50ml **\$11.00** 250ml **\$24.00**



AVAILABLE IN 3D

NEW RED

50ml **\$9.00** 250ml **\$35.50**
3D 100ml **\$18.00**



AVAILABLE IN 3D

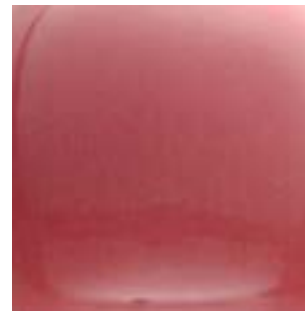
ROSSO

50ml **\$9.00** 250ml **\$24.00**
3D Glaze 100ml **\$15.50**



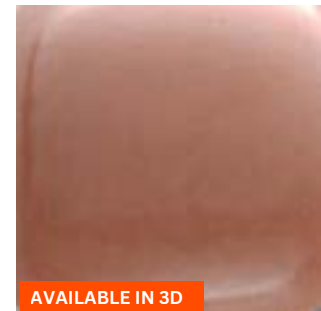
PASSION PINK

50ml **\$6.50** 250ml **\$24.00**



CHEEKY PINK

50ml **\$6.50** 250ml **\$24.00**



AVAILABLE IN 3D

CARNATION PINK

50ml **\$6.50** 250ml **\$49.50**
3D Glaze 100ml **\$18.00**



JUST PINK

50ml **\$6.50** 250ml **\$22.00**



RED BROWN

50ml **\$6.50** 250ml **\$24.00**



MUSCADEL

50ml **\$9.00** 250ml **\$46.50**



AVAILABLE IN 3D

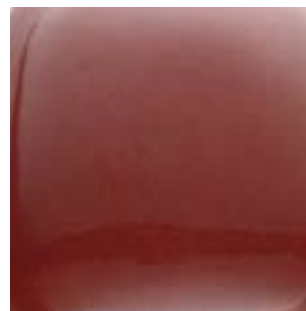
BROWN

50ml **\$6.50** 250ml **\$22.00**
3D 100ml **\$15.50**



MOCHA

50ml **\$6.50** 250ml **\$24.00**



MAROON

50ml **\$9.00** 250ml **\$35.50**



HEATHER

50ml **\$11.00** 250ml **\$46.60**



DUSTY RED

50ml **\$6.50** 250ml **\$27.50**

CLICK ON ITEMS FOR DETAILS OR TO ORDER

UNDER GLAZE



BLUSH

50ml **\$6.50**

250ml **\$24.00**



CARAMEL

50ml **\$6.50**

250ml **\$22.00**



DUSTY PINK

50ml **\$6.50**

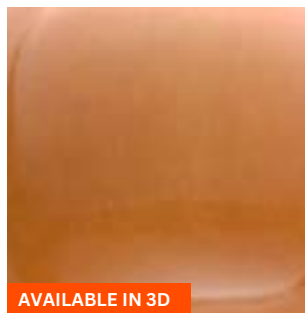
250ml **\$30.00**



SALMON PINK

50ml **\$6.50**

250ml **\$24.00**



CHESTNUT

50ml **\$6.50**

250ml **\$22.00**

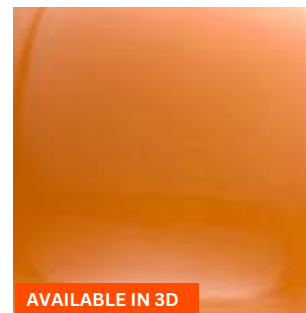
3D Glaze 100ml **\$15.50**



TANGERINE

50ml **\$6.50**

250ml **\$24.00**



ORANGE FLAME

50ml **\$6.50**

250ml **\$24.00**

3D Glaze 100ml **\$18.00**



FLAMINGO

50ml **\$6.50**

250ml **\$27.50**



CORAL

50ml **\$6.50**

250ml **\$22.00**



IVORY BEIGE

50ml **\$6.50**

250ml **\$22.00**



SOFT PINK

50ml **\$6.50**

250ml **\$22.00**



POPPY

50ml **\$6.50**

250ml **\$24.00**



BRIGHT RED

50ml **\$11.00**

250ml **\$49.50**

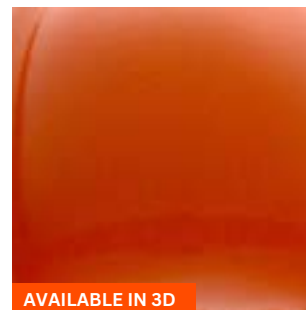
3D Glaze 100ml **\$18.00**



FRUITY RED

50ml **\$9.00**

250ml **\$38.50**



JUICY ORANGE

50ml **\$9.00**

250ml **\$33.00**

3D Glaze 100ml **\$18.00**



MANDARIN

50ml **\$9.00**

250ml **\$35.50**



UNDER GLAZE



AVAILABLE IN 3D

RED FLAME

50ml **\$11.00** 250ml **\$38.50**
3D Glaze 100ml **\$18.00**



IT'S RED

50ml **\$9.00** 250ml **\$33.00**



SAFFRON

50ml **\$9.00** 250ml **\$33.00**



NAARTJIE

50ml **\$6.50** 250ml **\$27.50**



FYNBOS

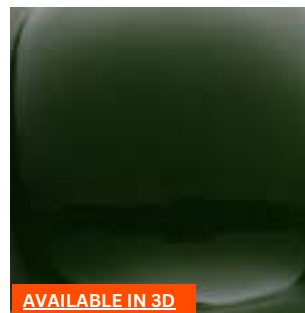
50ml **\$6.50** 250ml **\$27.50**



AVAILABLE IN 3D

BLUE GREEN

50ml **\$6.50** 250ml **\$24.00**
3D Glaze 100ml **\$15.50**



AVAILABLE IN 3D

DARK GREEN

50ml **\$6.50** 250ml **\$22.00**
3D Glaze 100ml **\$15.50**



MEDIUM GREEN

50ml **\$6.50** 250ml **\$24.00**



JADE

50ml **\$6.50** 250ml **\$22.00**



AVAILABLE IN 3D

AQUAMARINE

50ml **\$6.50** 250ml **\$22.00**
3D Glaze 100ml **\$18.00**



AVAILABLE IN 3D

KIWI GREEN

50ml **\$6.50** 250ml **\$22.00**
3D Glaze 100ml **\$18.00**



CHARTREUSE

50ml **\$6.50** 250ml **\$24.00**



LIME GREEN

50ml **\$6.50** 250ml **\$22.00**



LEMON YELLOW

50ml **\$6.50** 250ml **\$22.00**



OLIVE GREEN

50ml **\$6.50** 250ml **\$24.00**



TEAL GREEN

50ml **\$6.50** 250ml **\$22.00**

UNDER GLAZE



RACING GREEN

50ml **\$6.50** 250ml **\$22.00**



IRISH GREEN

50ml **\$6.50** 250ml **\$22.00**
3D Glaze 100ml **\$18.00**



SPEARMINT

50ml **\$6.50** 250ml **\$22.00**



SEA GREEN

50ml **\$6.50** 250ml **\$22.00**



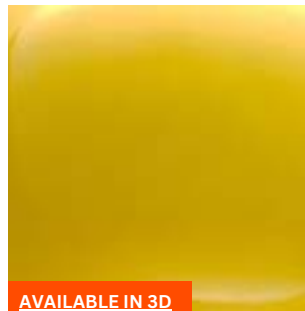
GOLDEN YELLOW

50ml **\$6.50** 250ml **\$24.00**
3D Glaze 100ml **\$18.00**



GOLDEN WHEAT

50ml **\$6.50** 250ml **\$22.00**



YUMMY YELLOW

50ml **\$9.00** 250ml **\$33.00**
3D Glaze 100ml **\$18.00**



BRIGHT YELLOW

50ml **\$6.50** 250ml **\$27.50**
3D Glaze 100ml **\$18.00**



SILK BLUE

50ml **\$6.50** 250ml **\$22.00**



TURQUOISE

50ml **\$6.50** 250ml **\$27.50**



ELECTRIC BLUE

50ml **\$6.50** 250ml **\$27.50**



SKYE BLUE

50ml **\$6.50** 250ml **\$22.00**
3D Glaze 100ml **\$18.00**



CHUN BLUE

50ml **\$6.50** 250ml **\$22.00**



SPECKLED BLUE

50ml **\$6.50** 250ml **\$24.00**



SPECKLED TAN

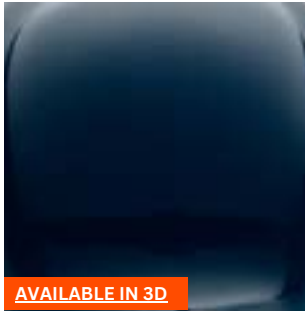
50ml **\$6.50** 250ml **\$24.00**



ORANGE

50ml **\$6.50** 250ml **\$24.00**
3D Glaze 100ml **\$15.50**

UNDER GLAZE



AVAILABLE IN 3D

MARINE GLOW

50ml **\$6.50** 250ml **\$27.50**
3D Glaze 100ml **\$18.00**



ALBANY

50ml **\$6.50** 250ml **\$27.50**



AVAILABLE IN 3D

BLACK

50ml **\$6.50** 250ml **\$27.50**
3D Glaze 100ml **\$18.00**



INDIGO

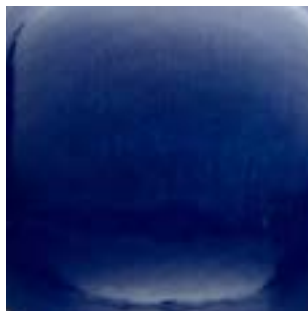
50ml **\$6.50** 250ml **\$27.50**



AVAILABLE IN 3D

DARK BLUE

50ml **\$6.50** 250ml **\$24.00**
3D Glaze 100ml **\$18.00**



BAY BLUE

50ml **\$6.50** 250ml **\$27.50**



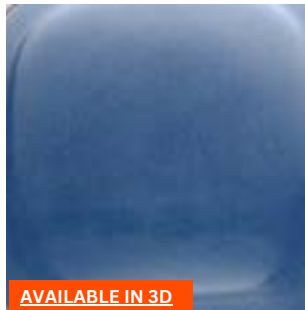
MEDIUM BLUE

50ml **\$6.50** 250ml **\$24.00**



CORNFLOWER

50ml **\$6.50** 250ml **\$22.00**



AVAILABLE IN 3D

GREEK BLUE

50ml **\$6.50** 250ml **\$22.00**
3D Glaze 100ml **\$15.50**



LILAC

50ml **\$6.50** 250ml **\$22.00**



AVAILABLE IN 3D

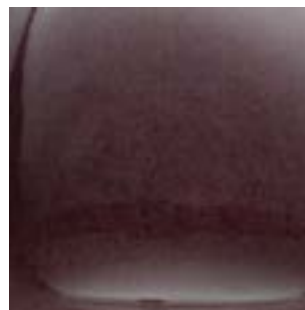
GUM METAL GREY

50ml **\$6.50** 250ml **\$24.00**
3D Glaze 100ml **\$18.00**



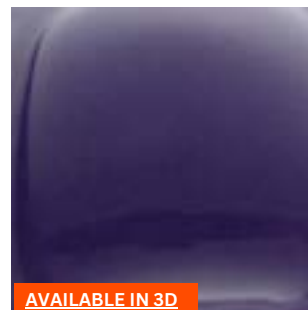
WARM GREY

50ml **\$6.50** 250ml **\$22.00**



AUBERGINE

50ml **\$6.50** 250ml **\$33.00**



AVAILABLE IN 3D

ROYAL PURPLE

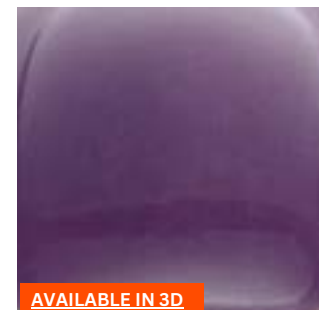
50ml **\$9.00** 250ml **\$33.00**
3D Glaze 100ml **\$18.00**



AVAILABLE IN 3D

BERRY STAIN

50ml **\$9.00** 250ml **\$44.00**



AVAILABLE IN 3D

PURPLE

50ml **\$9.00** 250ml **\$24.00**
3D Glaze 100ml **\$20.50**

UNDER GLAZE



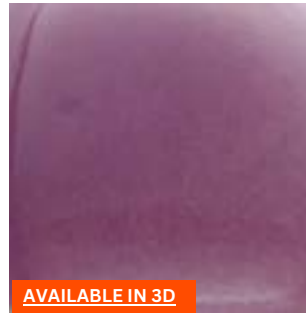
LAVENDER

50ml **\$6.50** 250ml **\$27.50**



WISTERIA

50ml **\$9.00** 250ml **\$30.00**



AVAILABLE IN 3D

MAUVE

50ml **\$9.00** 250ml **\$35.50**
3D Glaze 100ml **\$20.50**



LILAC

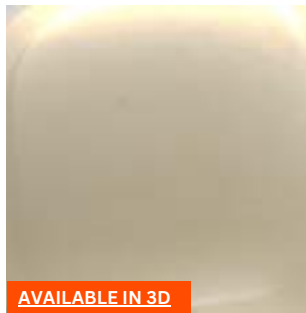
50ml **\$6.50** 250ml **\$22.00**



AVAILABLE IN 3D

WHITE

50ml **\$6.50** 250ml **\$22.00**
3D Glaze 100ml **\$18.00**



AVAILABLE IN 3D

CREAM

50ml **\$6.50** 250ml **\$22.00**
3D Glaze 100ml **\$15.50**



SPECKLED IVORY

50ml **\$6.50** 250ml **\$22.00**



COFFEE

50ml **\$6.50** 250ml **\$24.00**

UNDER GLAZE PENCILS



UNDERGLAZE **\$89.00**
PENCILS Set of 12



UNDERGLAZE **\$84.00**
PENCILS Set of 10



STAINS



APRICOT

100 gram powder **\$19.95**



BLACK

100 gram powder **\$24.95**



CORAL

100 gram powder **\$19.95**



DARK GREEN

100 gram powder **\$24.95**



DELFT BLUE

50 gram powder **\$19.95**



FLAME

100 gram powder **\$24.95**



LILLY GREEN

100 gram powder **\$19.95**



MARINE BLUE

100 gram powder **\$24.95**



MAUVE

100 gram powder **\$33.95**



OLIVE GREEN

100 gram powder **\$33.95**



ORANGE

100 gram powder **\$24.95**



RED

50 gram powder **\$15.95**



RED / MAROON

100 gram powder **\$24.95**



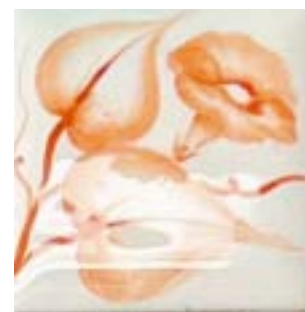
SEA GREEN

100 gram powder **\$19.95**



STEEL GREY

100 gram powder **\$24.95**



TANGERINE

100 gram powder **\$19.95**

STAINS



TURQUIOSE
100 gram powder

\$19.95



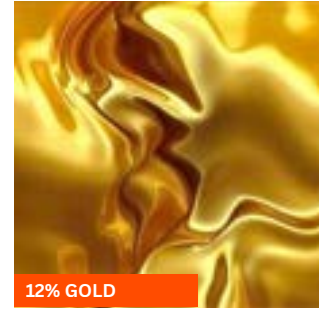
YELLOW
100 gram powder

\$19.95



STAIN BINDER
50ml pot

\$7.95



GOLD LUSTRE
2 gram Bottle

\$62.00



DECORATING SLIP



BLACK
250ml

\$22.95



BLUE GREEN
250ml

\$18.95



CANARY
250ml

\$18.95



CINNAMON
250ml

\$18.95



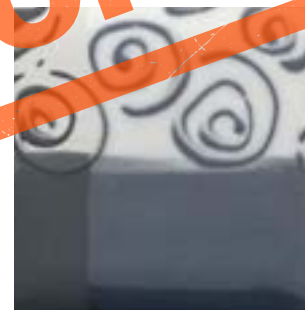
CORAL
250ml

\$18.95



DARK BLUE
250ml

\$20.95



GRANITE
250ml

\$18.95



IVORY
250ml

\$18.95

COMING SOON

DECORATING SLIP



LILY GREEN

250ml

\$20.95



MALACHITE

250ml

\$18.95



ORANGE

250ml

\$18.95



PEACH

250ml

\$18.95



PINK

250ml

\$22.95



RED

250ml

\$24.95



ROUGE

250ml

\$18.95



SAPPHIRE

250ml

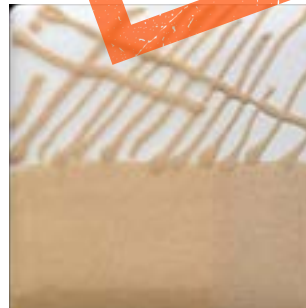
\$18.95



SOAPSTONE

250ml

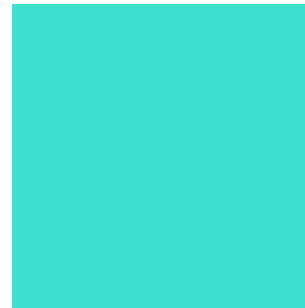
\$22.95



TIGERS EYE

250ml

\$18.95



TURQUOISE

250ml

\$18.95



YELLOW

250ml

\$22.95

FIRING SERVICE

Our firing service offers artists an easy, cost-effective way to fire ceramics without a personal kiln.

To keep costs low and service fast, please:

- Complete the Firing Services form
- Bases of glazed ware must be cleaned
- Ware must be bone dry & contain only clay
- Clays like BRT & glaze tests must be on a setter
- All ware to be marked with your makers ID
- Lids are fired on pots, unless we are told otherwise
- Discuss with us odd shaped or extra-large pieces
- Talk to us about any deadlines
- Ware related kiln/shelf damaged may incur a repair fee
- We cannot store your boxes or packing equipment

Drop-off & Pickup:

20 Helen Street, Heidelberg West, VIC

Interested in booking an entire kiln?

Call us to discuss on **03 7013 9025**

Click [Here](#) to view further information on our Firing Service

EXTRUDERS



HANDHELD EXTRUDER \$74.90
Hand Held with 6 Dies
with 5 Dies



HOLLOW DIES \$29.95
HANDHELD EXTRUDER



BLANK DIE \$4.95
HANDHELD EXTRUDER



EXTRUDER GUN \$26.00
with 20 Dies



EXTRUDER GUN \$15.95
WITH 18 DIES



HOLLOW DIE PLATES from \$89.00
COWLEY WALL MOUNTED EXTRUDER
Various sizes & shapes available



EXTRUDER \$369.00
WALL MOUNTED
with 4 Dies



COWLEY EXTRUDER \$545.00
WALL MOUNTED

SLAB ROLLERS



TABLE TOP SLAB ROLLER

Easily control clay thickness using boards and canvas. Create slabs in 4 different thicknesses: 19mm, 16mm, 10mm, and 7mm (further adjustable with canvas). Rubber feet keep it stable, no clamping needed!

\$549



\$44.00

CANVAS FOR FREE STANDING SLAB ROLLER

Large spare canvas for free standing slab rollers. 1000mm x 1540mm



\$1,690

FREE STANDING SLAB ROLLER

Rolls up to 52cm wide and from 70mm thick. Includes rolling canvas.

PUG MILLS



PETER PUGGER PUG MILLS

A Reliable and Efficient Choice for Clay Preparation
Peter Pugger Pugmills are ideal for mixing, de-airing, and reclaiming clay. Designed for hobbyists and professionals alike, they offer consistent results and come in a range of sizes to suit any studio.



FIRED UP PUG MILL TC90

Introducing the Fired Up Pug Mill TC90s, an affordable and efficient solution for clay preparation. With a 200–400kg/hr pugging rate, it wedges and de-airs clay for consistent results. Compact, sturdy, and runs on standard power with a 1.5–2.2kW motor and 0.55kW vacuum pump.



\$495.00

PUG MILL PLATFORM

A handy receiving platform for clay from your pug mill.

BALL MILLS



FIRED UP BALL MILLS - SINGLE & DOUBLE (5L)

An affordable solution for grinding materials into fine particles.

Our Fired Up Ball Mills are designed to effectively break down materials like clay or glaze components into fine powders. Simply place the materials into the rotating jar along with porcelain balls. As the jar rotates, the porcelain balls pulverize the materials, resulting in a fine, uniform powder. Ball mills are versatile; they can refine a single material or be used to mix multiple materials while pulverizing them, offering an efficient and reliable milling process.



**DOUBLE
\$1295**

REFRACTORY MATERIALS

CERAMIC FIBRE:

Name	Info	Price
Paper	3mm thick x 610mm wide	\$18 per metre
Paper	4mm thick x 610mm wide	\$23 per metre
Paper	6mm thick x 610mm wide	\$34 per metre
Blanket	25mm thick x 610mm wide	\$28 per metre
Full Blanket Roll	25mm x 610mm x 7200mm	\$162 per roll
Board	20mm thick x 600mm x 1000mm	\$84 per sheet
Board	50mm thick x 600mm x 1000mm	\$149 per sheet

ELEMENT WIRE:

Name	Thickness of wire	Price per metre
Kanthal A1	1.2mm	\$10
Kanthal A1	1.4mm	\$10
Kanthal A1	1.6mm	\$10
Kanthal A1	1.8mm	\$11
Kanthal A1	2.0mm	\$11
Kanthal A1	2.4mm	\$12
Kanthal A1	2.65mm	\$12
Kanthal A1	3.0mm	\$15
Kanthal A1	3.5mm	\$20
Kanthal A1	4.0mm	\$22

KILN BUNGS:

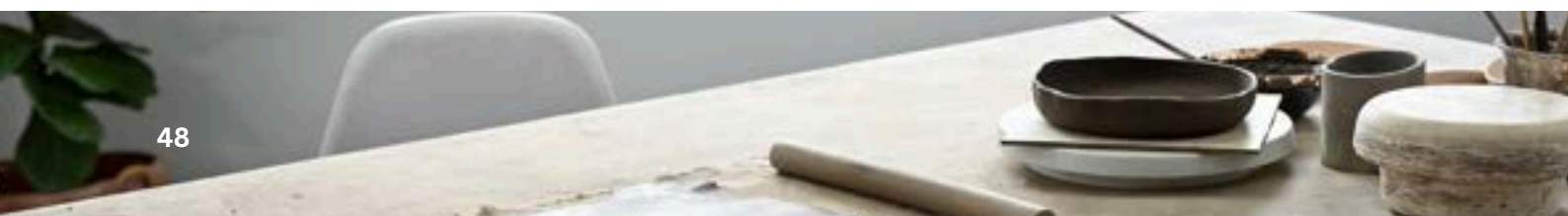
Name	Info	Price
Vent Tile	Kiln roof damper tile	\$13
Top Loading	For top loading kilns	\$11
Small Front Loading	For front loading kilns	\$19
Large Front Loading	For front loading kilns	\$30
Pottery crafts	Small replacement	\$48
Pottery crafts	Large replacement	\$66

KILN BRICKS:

Name	Info	Price
JM23	Light Weight Insulating Fire Brick	\$4.50 each
JM26	Light Weight Insulating Fire Brick	\$5.20 each
JM28	Light Weight Insulating Fire Brick	\$5.90 each

MISCELLANEOUS:

Name	Info	Price
Element Pins	20 per pack	\$16
Fibre Lid seals	Send us your size requirements	Starts from \$44
QF180	500ml	\$44
Fibre Adhesive	500ml	\$22
Blakite Mortar	500ml	\$22



GIFT SETS & VOUCHERS



UNDERGLAZE PRIMARY COLORS STARTER SET \$35.00

This great starter kit includes some vibrant primary colours along with black & white, which can be mixed to make a huge range of colors.

- 1 x 50ml Red
- 1 x 50ml Blue
- 1 x 50ml Yellow
- 1 x 50ml White
- 1 x 50ml Black

GIFT
WRAPPING
AVAILABLE



UNDERGLAZE STARTER SET \$65.00

Unleash your creativity with our specially curated Underglaze Starter Kit—perfect for beginners and hobbyists alike. This set has all the essentials to get you started.

- Pottery Brushes set of 10
- 2.5cm Hake Brush
- Clear Gloss brush on Glaze
- You'll receive five 50ml underglazes: one each of red, blue, yellow, white, and black



GLAZE STARTER SET \$135.00

This glaze starter kit is the perfect gift for the early career potter and includes:

- Choose 3 of our 1kg powder Midfire coloured glazes
- Clear Gloss Midfire Glaze 1kg powder
- Pehatine 500mls
- Scoop Set
- 2.5cm & 7.5cm Hake brushes
- Small Siphon Blower
- All in a 10L Lidded Bucket

Just add clay for the perfect gift!



HAND BUILDING STARTER SET \$50.00

This hand building starter set includes:

- Set of 8 pottery tools
- Small extruder gun, &
- Small facet cutter

Add some clay for the perfect gift for the creative person in your life.



POTTERY STARTER SET \$80.00

This pottery starter kit includes:

- Set of 8 Pottery Tools
- 2.5cm Hake Brush
- Clear Gloss brush on Glaze
- Plus five 50ml underglazes: one each of red, blue, yellow, white, and black - which can be mixed to make a huge range of colors.



GIFT VOUCHER NOT SURE WHAT TO BUY?

Let them choose with a Fired Up Kilns Voucher

The perfect gift for pottery enthusiasts, creative minds, or anyone looking to explore something new!

- Convenient: Purchase easily online.
- Flexible: Redeemable in-store or online.
- Versatile: Suitable for any occasion.

ORDER FORM



FIRED UP KILNS
and pottery supplies

Your Details		Notes or Instructions	
Name:			
Company Name:			
Address:			
Town:			
State & Postcode:			
Phone:			
Email:			

[illegible]

Delivery or Pick-up?		Date:	
----------------------	--	-------	--

Once we receive your order, we will calculate postage costs if required and email you an invoice.

Fired Up Kilns

20 Helen Street, Heidelberg West, Victoria, 3081, Australia

hello@firedupkilns.com.au Phone: +61 (03) 7013 9025 ABN: 365 984 307 89

www.firedupkilns.com.au



FIRED UP KILNS
and pottery supplies



Please leave us a



Review

Price and Color Disclaimer:

Prices and colors in this catalogue are subject to change and may vary. While we strive to ensure accurate pricing, adjustments may be necessary (refer to our website for current pricing). Please note that glazes seen in the photos may vary slightly in color and appearance.



FIRED UP KILNS
and pottery supplies

03 7013 9025 or 0473 748 870
hello@firedupkilns.com.au

Drop in and say hello
20 Helen Street, Heidelberg West. VIC. Australia
firedupkilns.com.au

Fired Up Kilns works from the lands of the Wurundjeri Woi Wurrung and Bunurong peoples of the Kulin Nation and pay our respects to their Elders past and present.

We also acknowledge the Elders, Ancestors, cultures and heritage of all Aboriginal and Torres Strait Islander Nations.



Everyone is welcome at Fired Up Kilns.