



HANSON
SOLUTIONS
GROUP



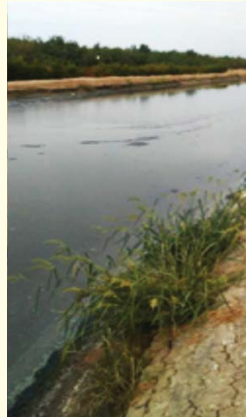
SOLIDS CAP REMOVAL

Beverage Manufacturer: Floating Sludge

Small Beverage manufacturing plant had a sludge cap 1-3" thick consisting of partially digested organic solids. Treated with 20,000 cfu/ml dose.



Before Treatment



2 Weeks
After Treatment

Small Dairy: Manure Pond

Small Midwestern dairy manure pond. Manures solids float was so thick "the farmer's dog could walk on it". Treated with 8,000 CFU/ml.



Before Treatment



1 Month After Treatment



2 Months After Treatment

Large Food Manufacturer: FOG Cap

Large food manufacturer with 6 acre pond that had 6-8" FOG cap. Dosed with 8,000 CFU/ml.



Before Treatment



3 Weeks After Treatment