



# COUNTRYSIDE VILLAS

What's new in your neighborhood?

Volume 1, Issue 7

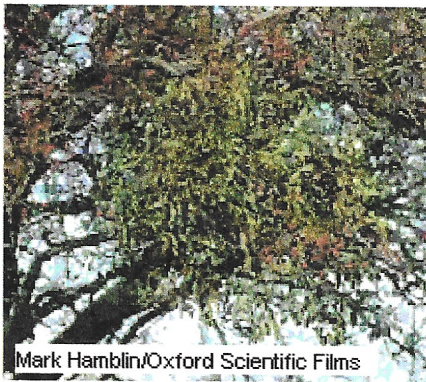
December 1998

## Happy Holidays and Happy New Year from The Board

### Did you know?

**Mistletoe**, common name for various parasitic plants belonging to the mistletoe family. The common European mistletoe grows on various trees, usually apples and junipers. It is an evergreen plant with small, greenish flowers and white berries. A similar mistletoe, American mistletoe, found in the United States, grows on deciduous trees, particularly red maple and elm, from eastern Texas to Florida and northward to Missouri and New Jersey.

The leafless flowering dwarf mistletoes depend entirely on the host tree for nourishment.



These scrubs are lethal parasites of conifers, such as pine, spruce, fir, and hemlock.

The common mistletoe figured significantly in the folklore and religions of pre-Christian Europe. Reputedly endowed with magical powers, it was used as a cure for sterility and as an antidote for poisons. It is used as a Christmas and New Year's decoration, and kissing under a branch of mistletoe is still customary.

**Scientific classification:** Mistletoe belongs to the family Loranthaceae.



### Thank You

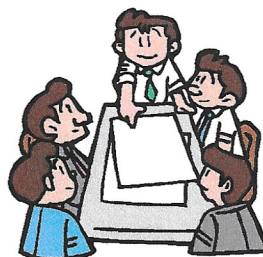
*A special thank you to all the Countryside Villas residents who have decorated their homes with beautiful holiday lights and decorations. They really make our neighborhood festive!*

## Board Meeting Notice

When: Monday, January 18, 1999

Time: 7:00 p.m.

Where: Countryside Community Center



Happy Holiday Season