

ASSESSOR'S RECORD MAP

221-11

COUNTRYSIDE SHADOWS

LOTS 001-072 & COMMON AREA A & B

(RESUB 36/42 M&P)

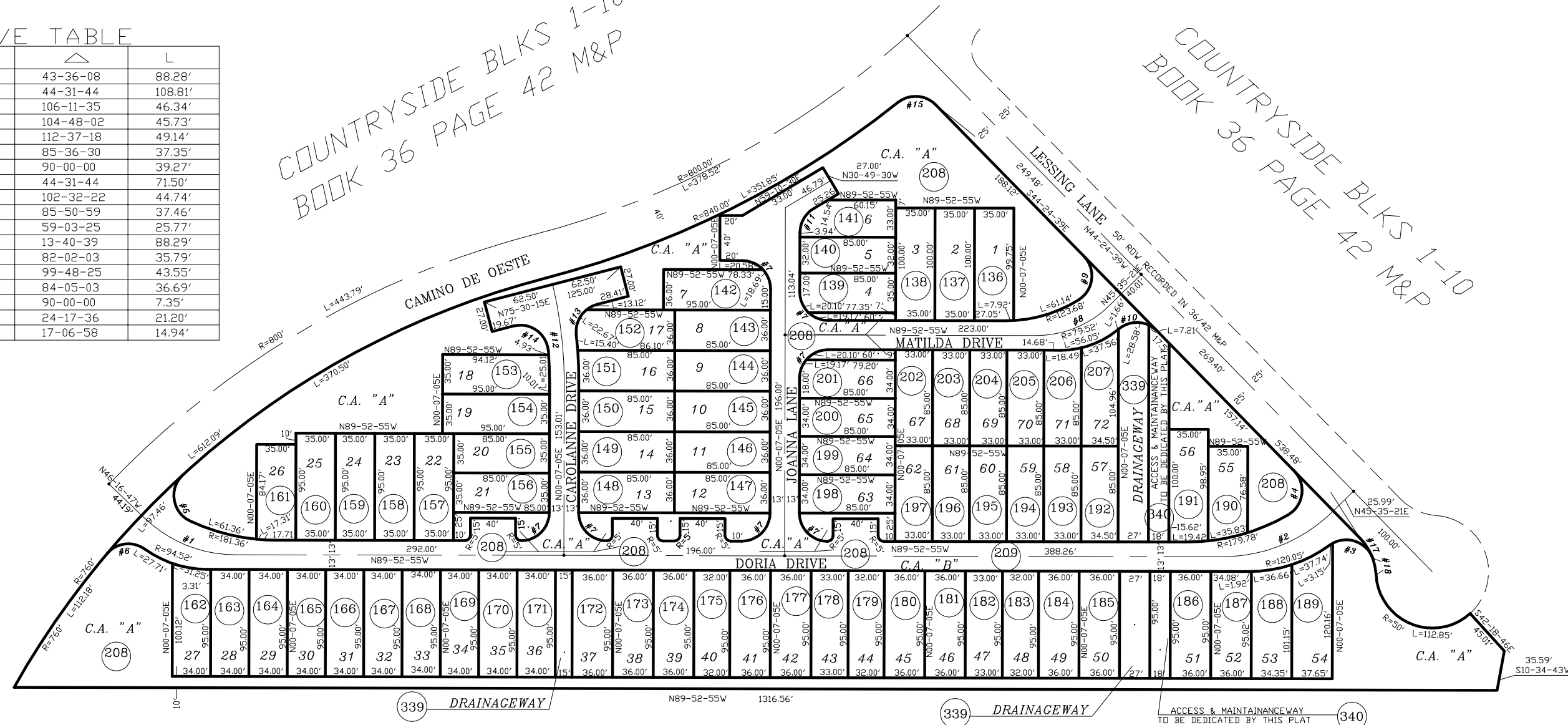
FORMERLY
202-40

CURVE TABLE

NO.	R	△	L
1	116.00'	43-36-08	88.28'
2	140.00'	44-31-44	108.81'
3	25.00'	106-11-35	46.34'
4	25.00'	104-48-02	45.73'
5	25.00'	112-37-18	49.14'
6	25.00'	85-36-30	37.35'
7	25.00'	90-00-00	39.27'
8	92.00'	44-31-44	71.50'
9	25.00'	102-32-22	44.74'
10	25.00'	85-50-59	37.46'
11	25.00'	59-03-25	25.77'
12	369.84'	13-40-39	88.29'
13	25.00'	82-02-03	35.79'
14	25.00'	99-48-25	43.55'
15	25.00'	84-05-03	36.69'
16	5.00'	90-00-00	7.35'
17	50.00'	24-17-36	21.20'
18	50.00'	17-06-58	14.94'

COUNTRYSIDE BLKS 1-10
BOOK 36 PAGE 42 M&P

COUNTRYSIDE BLKS 1-10
BOOK 36 PAGE 42 M&P



UNSUBDIVIDED

SEE BOOK 37 PAGE 037 M&P
1993-2

S24,T12S,R12E

:\MP37\37037- 07/02/93 DML



pima county
assessor