

COUNTRYSIDE VILLAS

PAINTING SPECIFICATIONS & GUIDELINES



Revised, Updated & Approved by the Board of Directors

March 2006

Updated: 7/16/2007

HOUSE PAINTING SPECIFICATIONS

In order to maintain uniformity in the color schemes of our units, owners must adhere to the approved color schemes when repainting their unit.

FRONT, BODY and ATTACHED SIDE OF HOUSE & UTILITY DOOR:

The paint must be flat latex (any brand) as long as the color matches the approved Dunn Edwards color samples (chips) on page 2, color samples "B". All areas designated "B" must be painted the same color.

FRONT TRIM & GARAGE DOOR:

The color for the trim and garage door must be the same color. The paint must be a flat latex (any brand) as long as the color matches the approved Dunn Edwards color samples (chips) on page 2, color samples "A".

WROUGHT IRON ENTRY GATE:

Use flat black enamel paint any brand on page 2, color samples "C".

INTERNAL (REAR & SIDE) BODY:

The paint must be a flat latex (any brand) as long as the color matches the approved Dunn Edwards color samples (chips) on page 3, color samples "G".

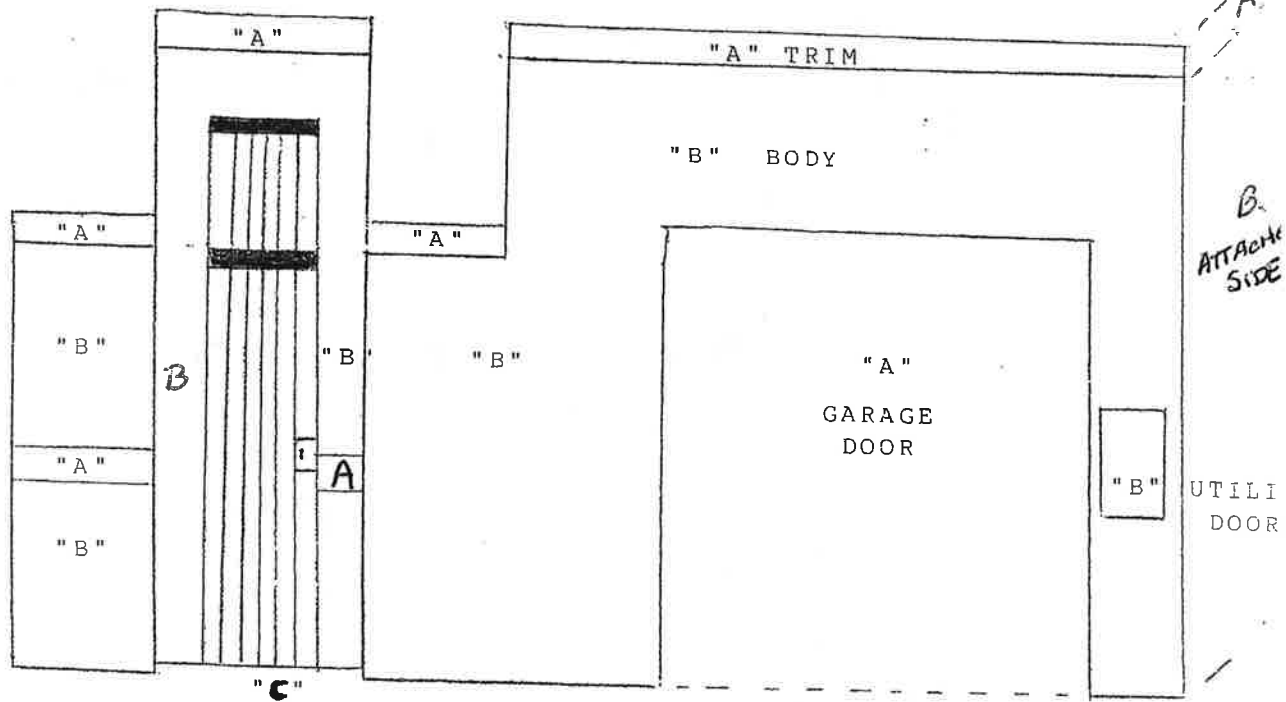
FASCIA & TRIM:

The paint must be a flat latex (any brand) as long as the color matches the approved Dunn Edwards color samples (chips) on page 3, color samples "F".

If you have any questions regarding the painting, please contact the Architectural Committee or a member of the Board before you begin painting.

Contact: _____ Phone: _____

Contact: _____ Phone: _____



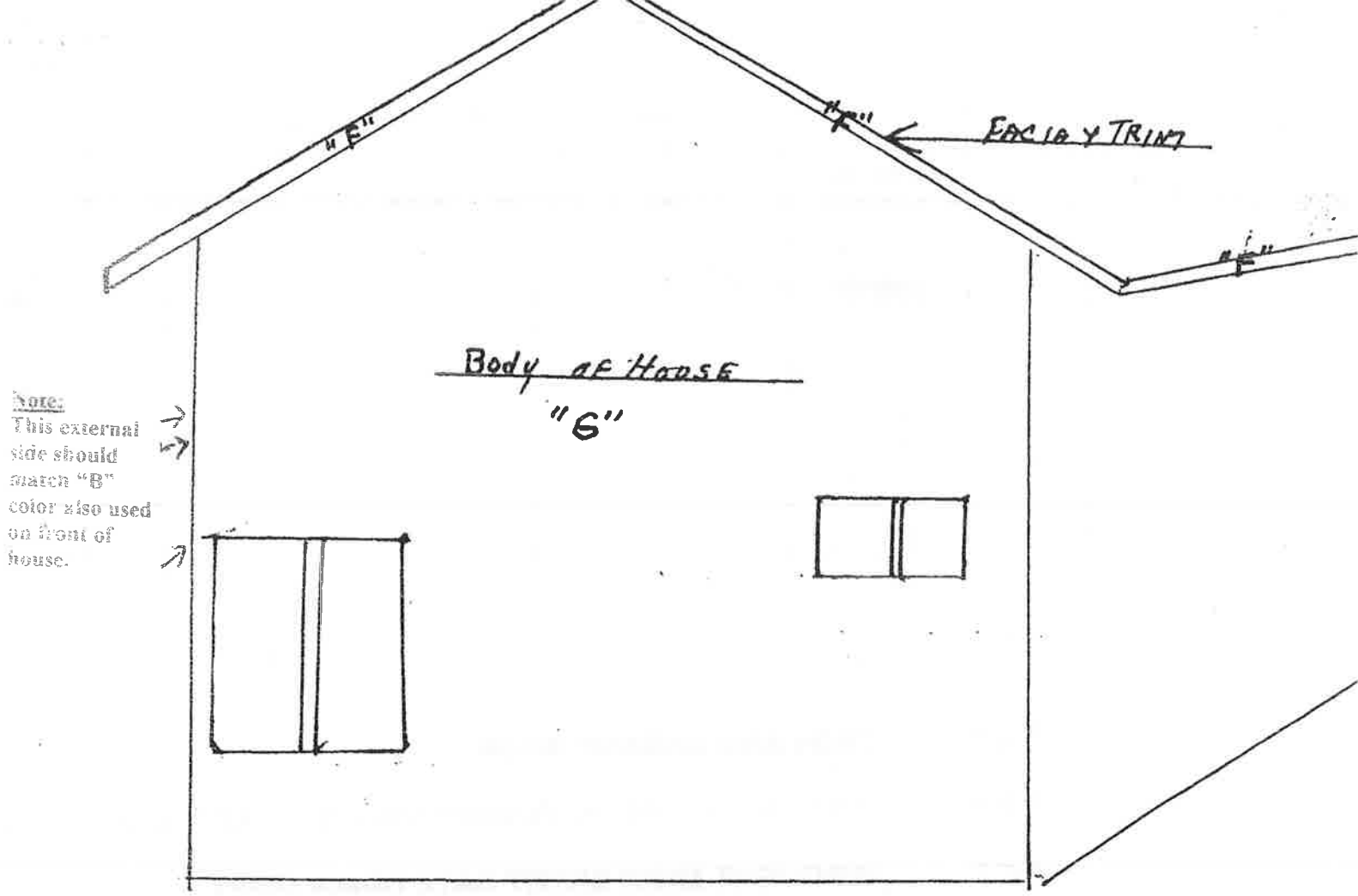
- " A "** TRIM AND GARAGE DOOR
- " B "** BODY OF HOUSE, ATTACHED SIDE & UTILITY DOOR
- " C "** WROUGHT IRON ENTRY GATE (Black Only)

- Notes:**
- Dark brown fascia on house trim must stay the same
 - Inside arch must be same color as body " B "

APPROVED COLORS

" A "


" B "




APPROVED COLOR SCHEMES & SPECIFICATIONS

“ F ” Fascia and Trim of House

“ G ” Body of House & Block Privacy walls

F  Briar Brown

G  Baja White

Specifications:

Paint for fascia and trim (F) are exterior flat latex.

Paint for Body of House and Block Privacy Wall (G) are exterior flat latex.

Any brand paint is acceptable but it must match the Dunn Edwards paint sample(chip)

COUNTRYSIDE VILLAS HOMEOWNERS' ASSOC.

DUNN-EDWARDS PAINT COLORS

House Acct# 057471-002 (Reference address for file: 4901 Doria)

<u>"A" COLORS</u>	Old#	New #	Chip Sample#
• Stonish Beige	68	DEC 716	677
• Hickory	SP 177	DEC 759	694
• Adobe South	SP 172	DEC 709	642
• Cliff Brown	SP 3	DEC 711	652
• Briar Brown	SP 25	DEC 712	657
• Weathered Brown		DEC 756	679
**Barley (<i>See Important Note Below</i>)	SP 175	No longer Available	

"B" COLORS

• Baja White	14	DEC 722	608
• Travertine	63	DEC 738	688
• Pearl White	70	DEW 328	42

"F" COLORS

• Briar Brown	SP 25	DEC 712	657
---------------	-------	---------	-----

"G" COLORS

• Baja White	14	DEC 722	608
--------------	----	---------	-----

**Barley color is no longer available. It may no longer be used as an "A" color. If your home has barley as the current color, it may remain until such time as you repaint completely. If you need to do touch up painting using the barley color you will need to take a piece of the paint to a paint store to have it matched.

