



Egyptian Natural Stone Catalouge

Basalt Stone

Basalt Stone



Basalt Stone Applications



Black Basalt is a volcanic stone that has been used in architecture for centuries, has a particularly rich history. It is quarried near Egypt and was used by ancient Egypt to Make Pharaonic statues.

Porous material with naturally-occurring holes that may remain unfilled or be factory-filled with resin or cement. Basalt tiles Egypt will stain when exposed to oil and highly-pigmented liquids.



Basalt Stone Applications



Basalt Stone Art



Mica
Sandstone

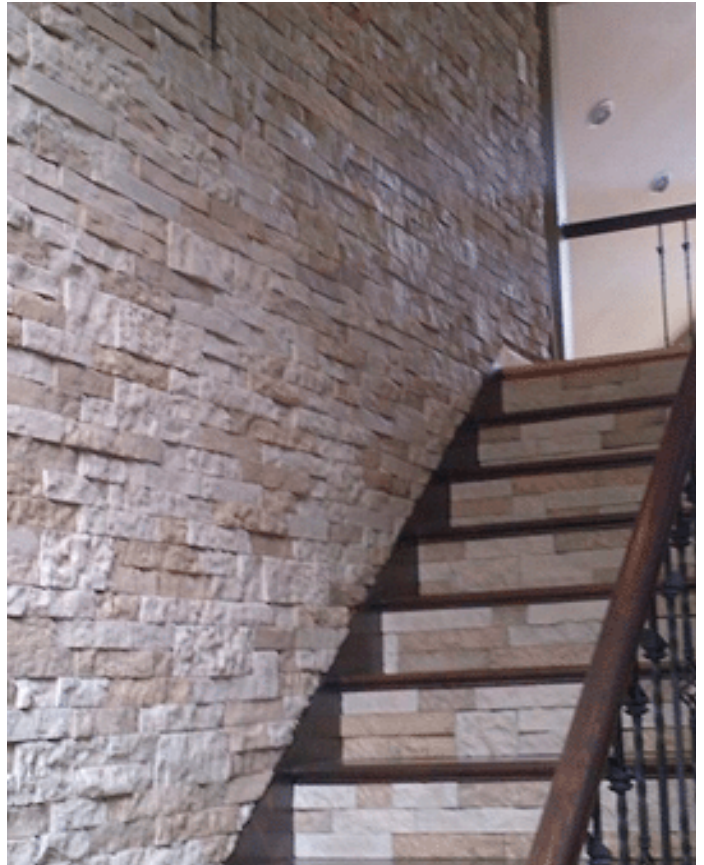
Mica Sandstone



Mica Sandstone Applications

Mica: This is another form of sedimentary rock made up of quartz. This is formed in various environments whether there is water or not. It can be automatically formed in a river, ocean or desert that makes it capable for any weather.

Mica might be a feature stone with a vitreous to brilliant gloss, which shapes in several specific layers. Mica is certainly a huge time period it truly is attributed to extra than 34 types of those layers.



Mica Sandstone Applications



Hashma Sandstone

Hashma Sandstone



Hashma Sandstone Applications



Hashma Stone is a yellow-beige Sandstone from Egypt, Suitable for interior and exterior use.

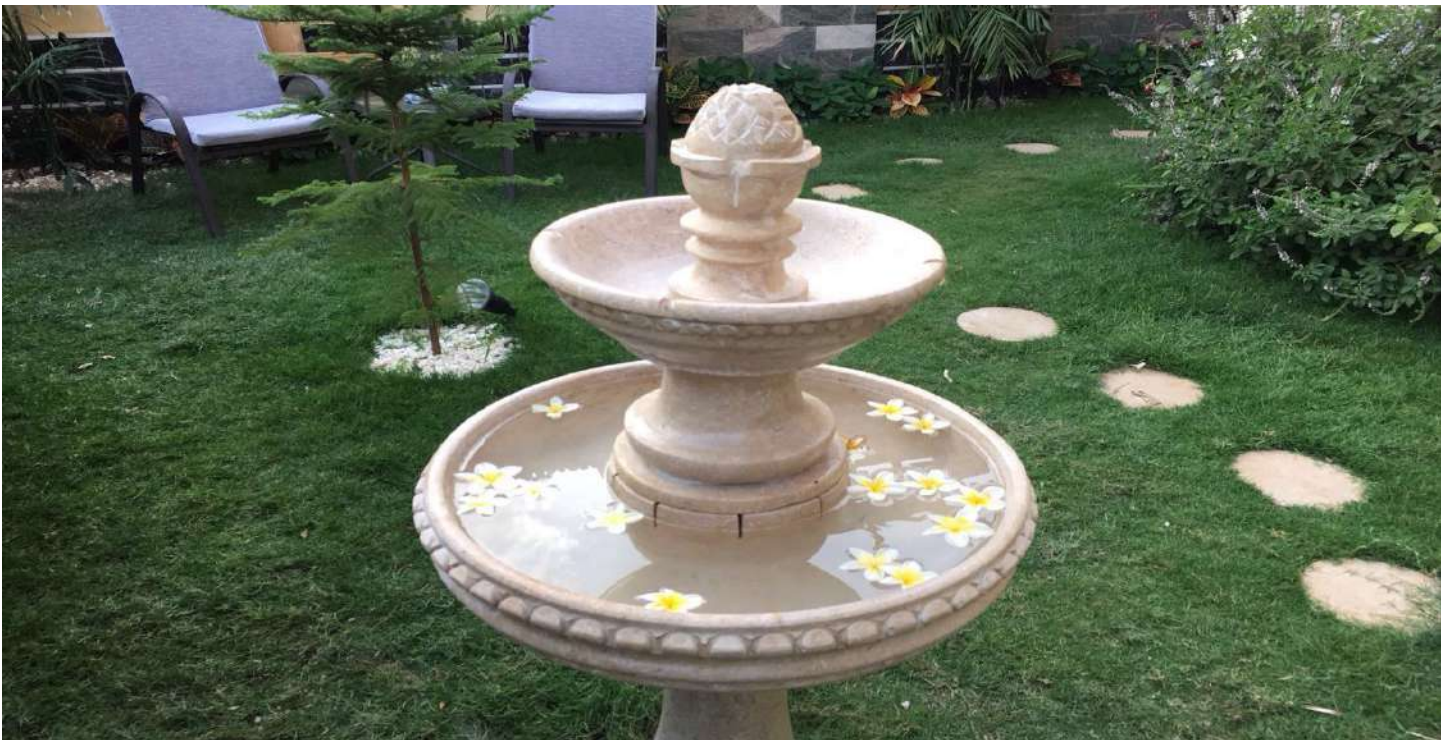
Hashma Stone: is characterized by the presence of many tiny holes, caused by trapped gas bubbles during its formation. This creates a porous, uneven surface, which is referred to as Unfilled Hashma sandstone. When these cavities are filled with cement or another material, the result is called Filled Hashma Stone and may be honed and polished to provide a uniform surface similar to marble.



Hashma Sandstone Applications

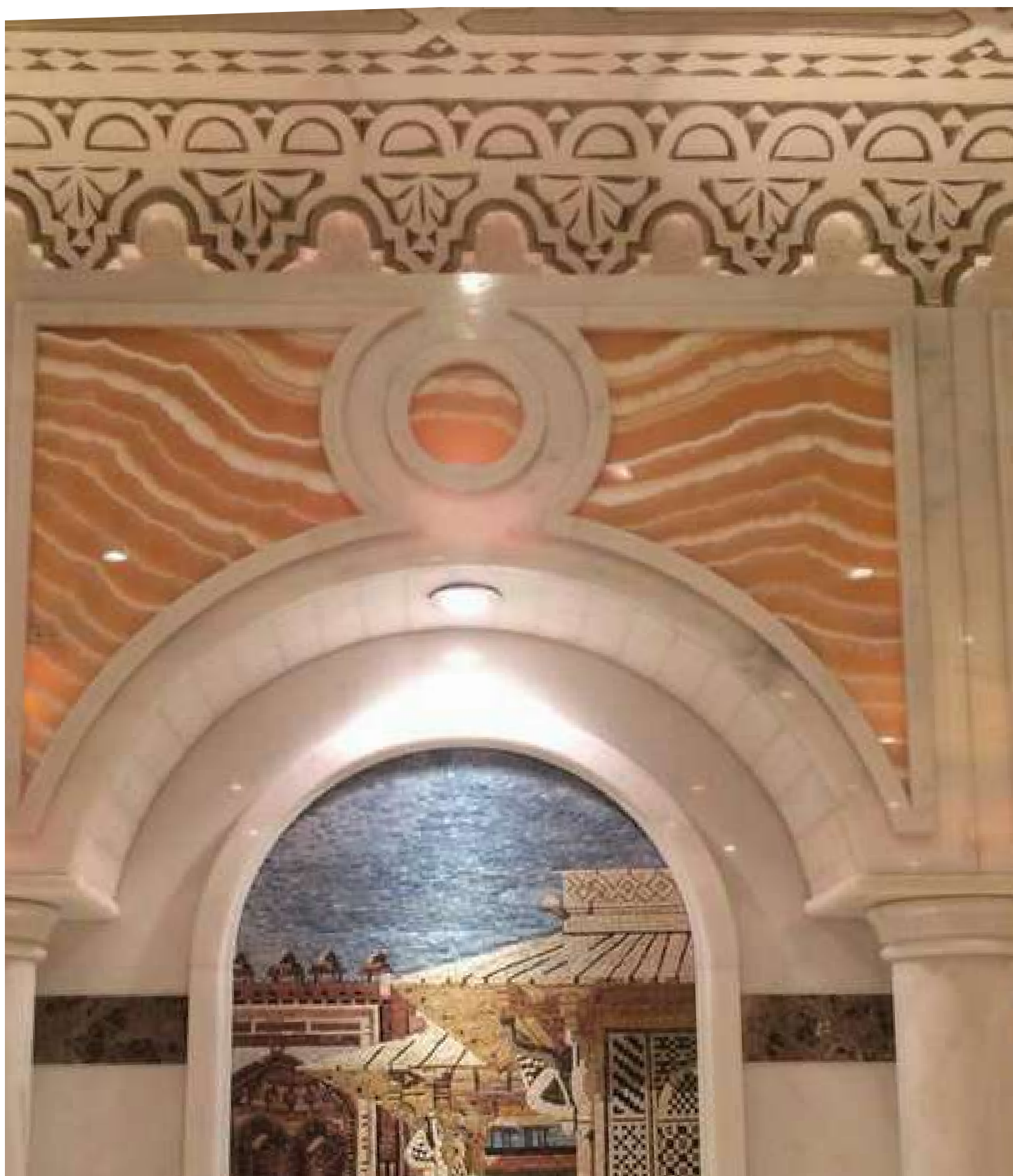


Hashma Sandstone Art



Alabaster Stone

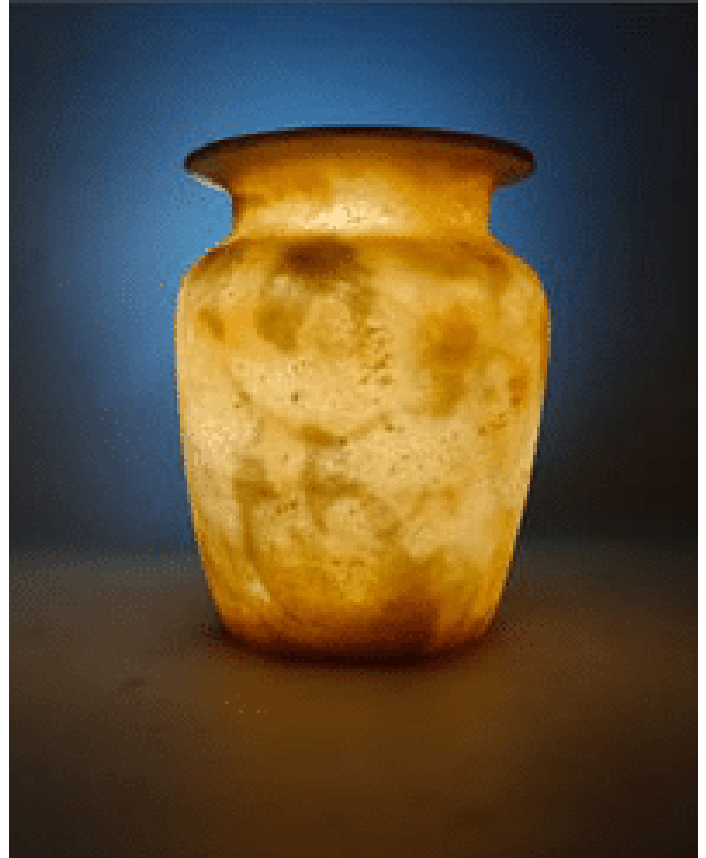
Alabaster Stone



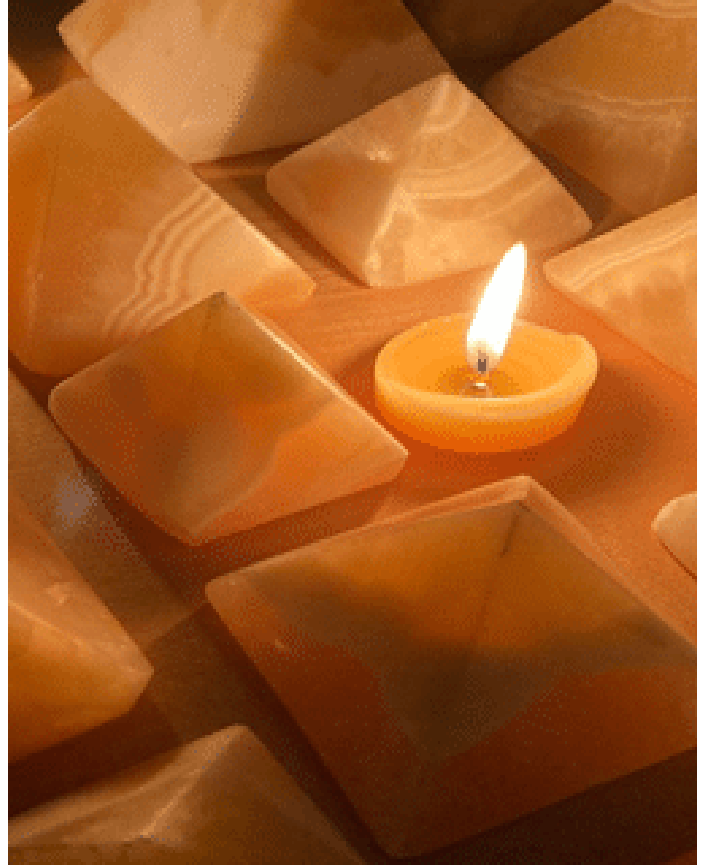
Alabaster Stone Applications

The former is alabaster Egypt from today, whilst the latter is frequently alabaster from the past. The relative hardness of the two varieties makes it easy to tell them apart.

The calcite kind is too hard to scrape with a fingernail (Mohs hardness 1.5 to 2), whereas the gypsum type is soft enough to scratch with a fingernail (Mohs hardness 1.5 to 2). (Hardness 3 on the Mohs scale).



Alabaster Stone Art



Tura Stone

Tura Stone



Tura Stone Applications



Egyptian natural stones bring a warm look and finish to all manner of applications one of the ancient natural stone in Egypt is tura stone

Tura Stone (Pharos Limestone)
Egyptian natural stones convey a warm appearance and finish to all manner of applications one of the historical natural stone in Egypt is tura Tura Limestone, used for the building Pyramid The Tura quarries lie south of Cairo on the eastern shore of the Nile.



Marble Stone

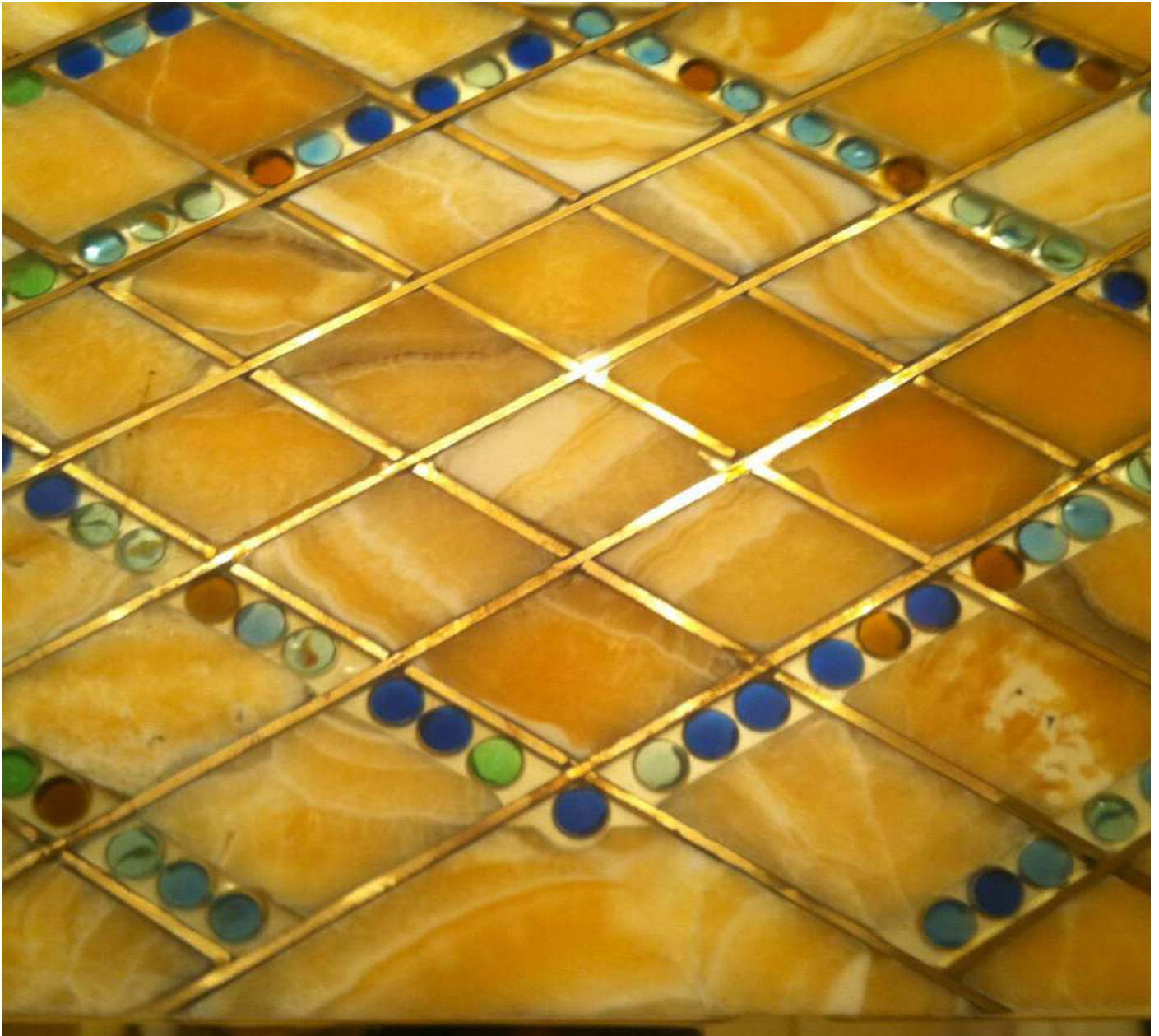
Marble Stone



Granite Stone

Granite Stone





Egyptian Natural Stone Catalog

Thank
You