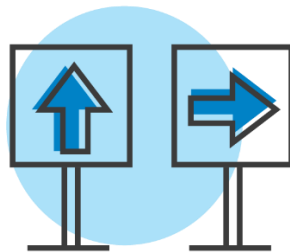


WHAT TO EXPECT FROM **SOUTHAMPTON ICE RINK**

New Health and Safety Procedures



New Directional Signage

Upon arrival, new signage will direct you and your family towards temporary entrances in order to follow social distancing protocols.



Health Screening

All adults and children who will be coming to the Southampton Ice Rink facility (dropping off and/or entering) should take their temperature prior to leaving their home. If the temperature of anyone in the family is of 100.4F or higher, we ask that you stay home.

For your safety, we will be conducting temperature checks on-site and will not be able to allow entrance to anyone with a temperature of 100.4F or higher.

If your child is more comfortable with a parent/guardian taking their temperature, a staff member will supervise that process.

Anyone who enters Southampton Ice Rink will have to complete a **Daily Health Declaration Form**.



Facility Access

To maximize safety and social distancing we ask that only one (1) parent or caregiver drop off children. Guardians are allowed to remain in the building for 15 minutes before the start of class.



Staff Health Protocols

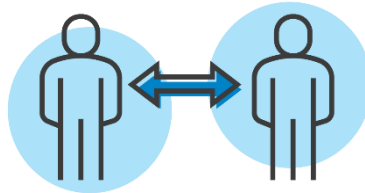
All staff must complete a daily health survey before starting their shift which includes having their temperature taken and wearing protective face masks. Staff shall also practice enhanced handwashing and health practices, including covering coughs and sneezes with a tissue or the corner of the elbow and assisting children with increased handwashing and healthy practices throughout the day.



Mask Policy

In compliance with [CDC guidelines](#) for youth sports, **all athletes are required to wear a protective face covering and practice social distancing at all times and throughout Southampton Ice Rink facilities, except while engaged in strenuous activities.** Please make sure to send your child to Southampton Ice Rink with a

protective face covering and an extra face covering in their backpack or bag. Face coverings should be clearly marked with your child's name.



Social Distancing

Small groups of kids will be together with one (1) coach for the entire semester. As much as possible small groups are socially distant from each other.

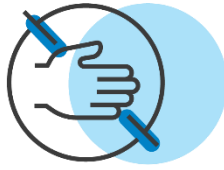
Activities will be designed to provide sufficient spacing to allow for social distancing. Coaches will provide "hands on" instruction only when necessary to ensure safety.

We encourage social distancing within the group; however, contact with groupmates will be unavoidable.



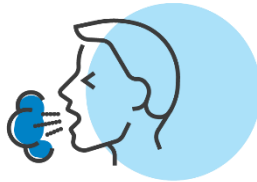
Enhanced Disinfecting Procedures

For the safety and protection of our families and staff, our cleaning and maintenance protocol will continue to be maintained at the highest standard throughout the property. Our teams have increased the frequency of these processes, upgraded our supplies and disinfectants to comply with CDC guidelines and new industry standards, and increased the visibility and number of hand sanitizing stations. Southampton Ice Rink maintenance staff, coaches and counselors will also be responsible for wiping down and disinfecting any and all shared sports equipment between sessions throughout the day.



Limited Use of Locker Rooms and Controlling Restroom Occupancy

To prevent overcrowding in locker rooms and restrooms, we will limit occupancies. Locker rooms will be for changing-only at this time and a Southampton Ice Rink staff attendant will always monitor occupancy levels to comply with social distancing regulations.



Isolation Room

In the event a child feels ill or shows symptoms of illness during their time at there will be a designated isolation room at each venue where the child will be escorted for their safety and the safety of others. As in normal circumstances, parents will be notified immediately to arrange for pick-up. A staff member will remain near the child for supervision.



Notification Policy

Southampton Ice Rink will follow State and/or Board of Health requirements to support notification and contact tracing protocols.