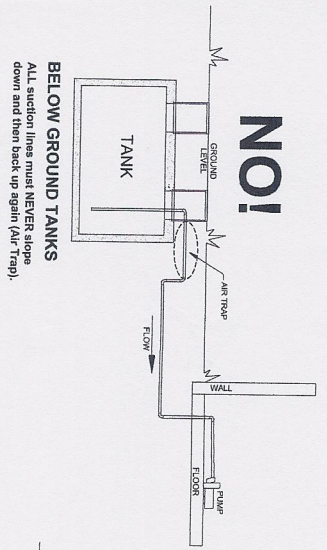
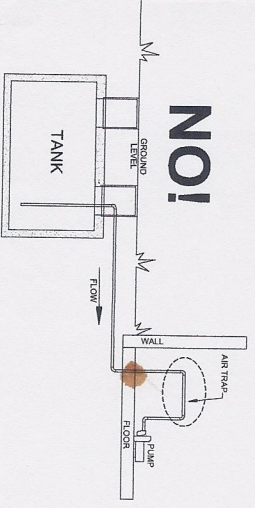


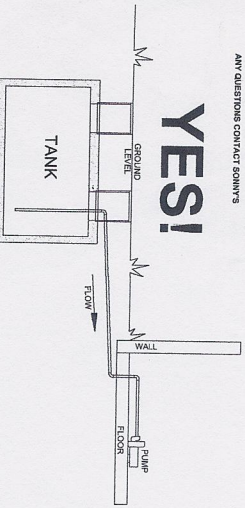
NOTE: THESE DOCUMENTS ESTABLISH THE GENERAL STANDARDS OF QUALITY AND DETAIL FOR DEVELOPING A NEGOTIATED CONSTRUCTION CONTRACT.



BELOW GROUND TANKS
ALL suction lines must NEVER slope down and then back up again (Air Trap).

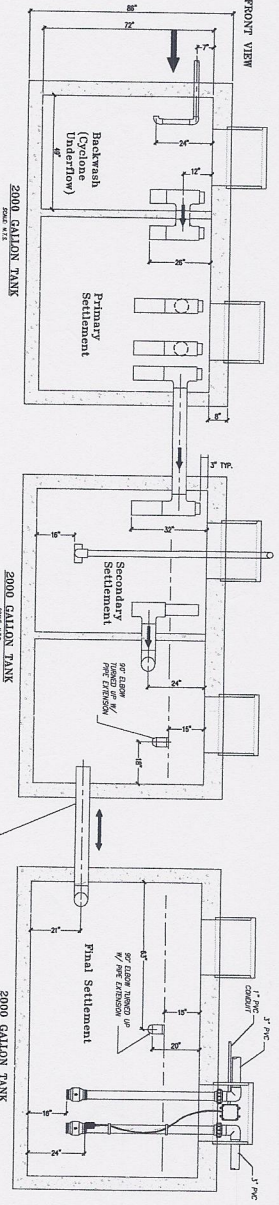
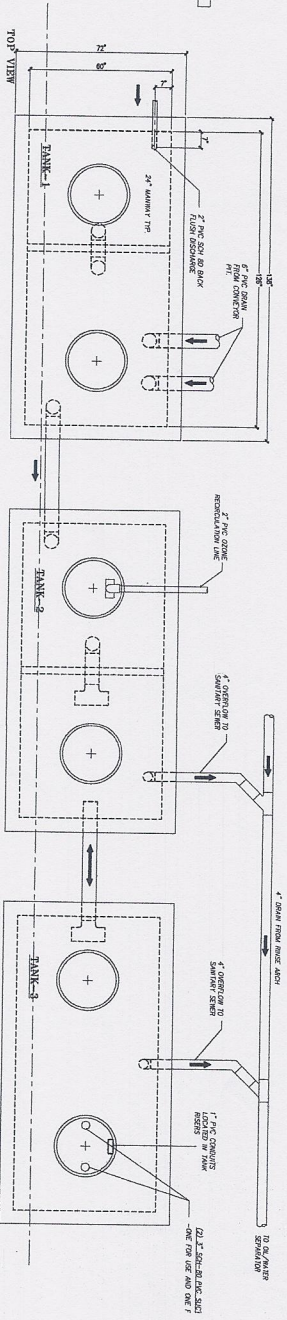


BELOW GROUND TANKS
ALL suction lines must NEVER slope up and then back down again (Air Trap). ANY QUESTIONS CONTACT DRAWNERS



BELOW GROUND TANKS
ALL suction lines require a continuous upward slope to the Equipment Room.

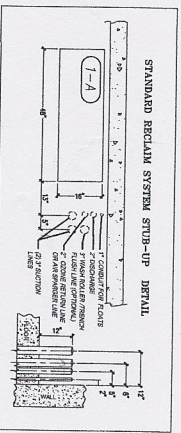
NOTE: ALL RECLAIM WATER MUST BE STORED IN THE TANKS AS SHOWN.



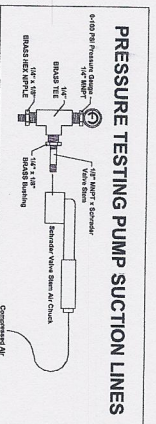
NOTE:
1. Pressure Test All Suction Lines upon installation @ 10-15 PSI max.
2. Keep pressure Suction Lines for the entire DURATION of construction.
3. Pressure should NOT drop more than 2 PSI.
4. Watch for problems with increasing drive/velocity.
5. Placement of suction lines is critical.
6. Do NOT put screens on the suction lines

CAR WASH RECLAIM SYSTEM STANDARD RECLAIM 3 TANK

NOTE:
1. ALL UNDERGROUND TANKS AND PIPING BY CONTRACTOR
2. PRE LOCATIONS SHOULD BE USED FOR ANY TANK
3. ALL INTERNAL TANK PLUMBING TO BE 8" and 40 PVC UNLESS NOTED OTHERWISE
4. ALL OTHERS SHOULD BE LABEL
5. THIS DRAWING IS TO SHOW TANK HOLDING CAPACITY AND PIPING RELATIONSHIPS ONLY. THEY ARE NOT INTENDED TO ADDRESS TANK STRUCTURE ENGINEERING.



STANDARD RECLAIM SYSTEM STUB-UP DETAIL



PRESSURE TESTING PUMP DETAIL

RECLAIM TANKS DETAIL

RECLAIM TANKS DETAIL

Revisions



RECLAIM SYSTEM

Mister Car Wash TX1283
Pioneer 160.01.C2
130 S. Pioneer Dr.
Abilene, TX 79605

a.23 studios

Project: 21014
Date: 04/1/21
Scale: Nood
Sheet:

P6.0

KC MECHANICAL ENGINEERING, L.L.C.
1001 S. 10th Street
New, Abilene, TX 79602
Phone: 325.342.5252
Fax: 325.342.5253
www.kcmech.com