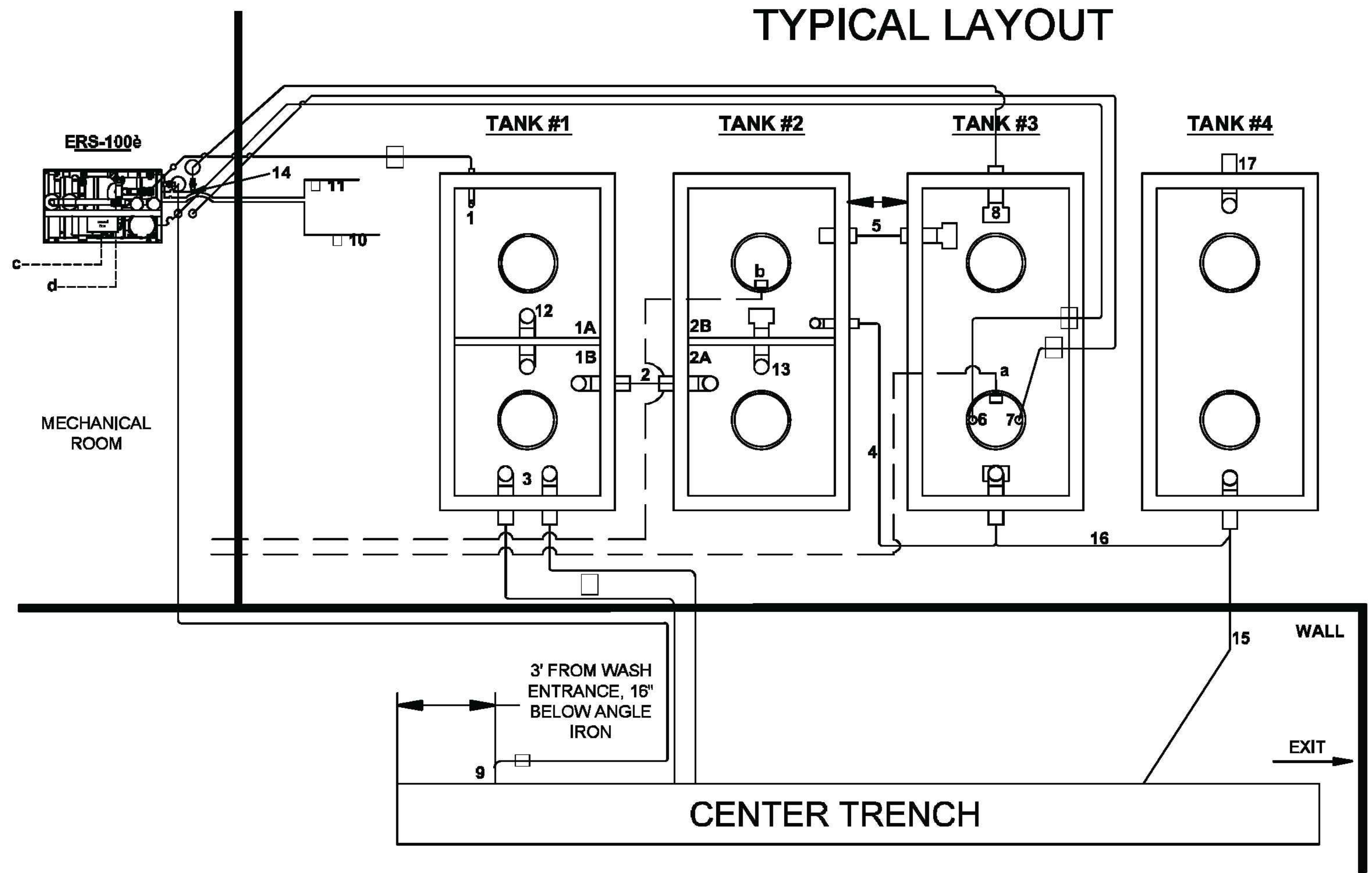


# TYPICAL LAYOUT



**TANKS**  
**TYPICAL 1,500 GAL. PRECAST CONCRETE**

TANK #1 - 1A UNDERFLOW - 1B PRIMARY SETTLEMENT  
 TANK #2 - SECONDARY SETTLEMENT W/ BAFFLE  
 TANK #3 - PROCESS TANK  
 TANK #4 - OIL AND WATER SEPARATOR PER MUNICIPAL SPECIFICATIONS 1500 GALLON

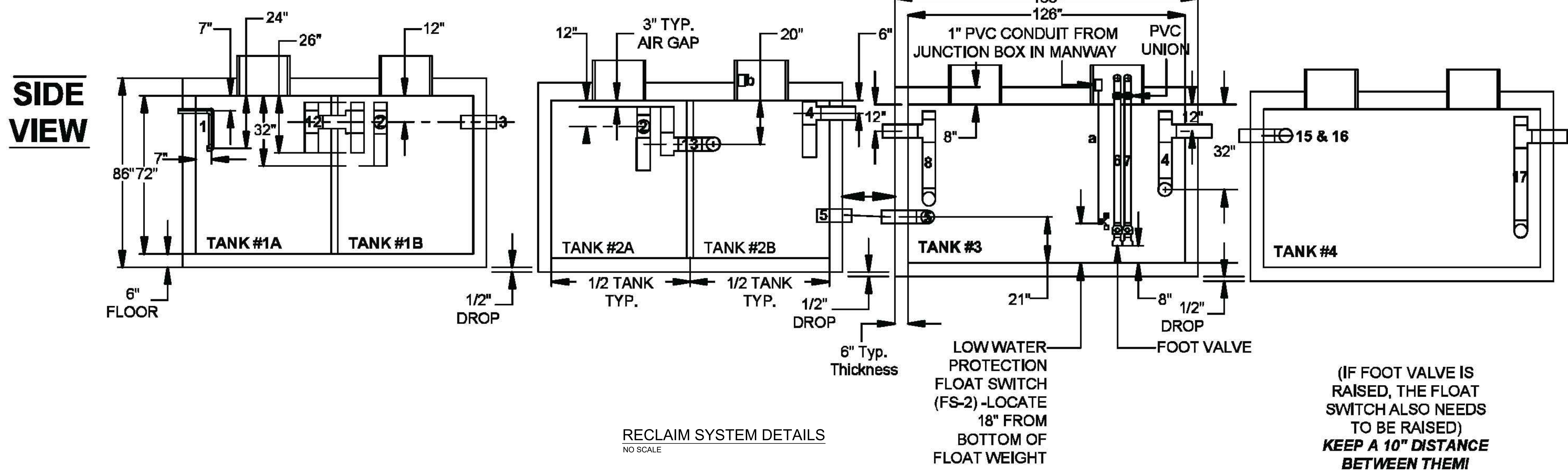
- UNDERGROUND PLUMBING**
- 1 - 2" SCH 80 PVC PIPE - UNDERFLOW DISCHARGE - TO TANK 1A
  - 2 - 6" SCH 40 PVC PIPE - EXTERNAL CROSSOVER - FROM TANK 1B TO TANK 2A
  - 3 - TWO 6" SCH 40 PVC PIPES - CENTER TRENCH - TO TANK 1B
  - 4 - 4" OR 6" SCH 40 PVC PIPE - OVERFLOW FROM TANK 2B TO TANK 3
  - 5 - 6" SCH 40 PVC PIPE - EXTERNAL CROSSOVER - FROM TANK 2B TO TANK 3
  - 6 - 3" SCH 80 PVC PIPE - FILTER PUMP SUCTION LINE - FROM TANK 3 \*SHOULD HAVE SLIGHT FALL TO RISER. INSTALL 90° AS HIGH AS POSSIBLE ON RISER TO ALLOW FOR EASY MAINTENANCE.\*
  - 7 - 3" SCH 80 PVC PIPE - SPARE SUCTION LINE - FROM TANK 3 \*COMPLETE PLUMBING ON SPARE SUCTION LINE. UNION & FOOT VALVE SAME AS PRIMARY (6). SHOULD HAVE SLIGHT FALL TO RISER. INSTALL 90° AS HIGH AS POSSIBLE ON RISER TO ALLOW FOR EASY MAINTENANCE.\*
  - 8 - 4" OR 6" SCH 40 PVC PIPE - AQUAPREP DISCHARGE - SPLIT TO TANK 3
  - 9 - 4" OR 6" SCH 40 PVC PIPE - AQUAPREP DISCHARGE - SPLIT TO CENTER TRENCH
  - 10 - 6" SCH 40 PVC PIPE - INTERNAL CROSSOVER - FROM TANK 1A TO TANK 1B
  - 11 - 6" SCH 40 PVC PIPE - INTERNAL CROSSOVER - FROM TANK 2A TO TANK 2B
  - 12 - 6" SCH 40 PVC PIPE - TIRE SHINE DRAIN TO TANK 4
  - 13 - 6" SCH 40 PVC PIPE - EXTERNAL CROSSOVER FROM TANK 3 TO TANK 4
  - 14 - PIPE TO SANITARY SEWER

- NOTES:**
- ACTUAL TANK DIMENSIONS MAY VARY.
  - PLUMBING SHOULD BE PLACED AS SHOWN REGARDLESS OF WHAT TANKS ARE USED.
  - ALL PIPES MUST BE SET BELOW FROST LINE.
  - SUCTION LINES MUST BE SCH 80 PVC.
  - DO NOT INSTALL SCREENS ON FOOT VALVE.
  - CONSULT ENGINEER FOR ELEVATIONS.
  - 1 PIECE TANK IS REQUIRED
  - MATCH TANK ELEVATION AS SHOWN.

- ABOVE GROUND PLUMBING**
- 10 - 2" PIPE - RECLAIM WATER OUTLET - FROM ERS TO CAR WASH EQUIPMENT
  - 11 - 2" PIPE - FRESH WATER INLET - FROM CITY WATER SOURCE TO ERS
  - 14 - 2" SCH 80 PVC PIPE - AQUAPREP DISCHARGE TEE' D W/ BALL VALVES

- UNDERGROUND ELECTRICAL**
- A - 1" PVC CONDUIT - LOW WATER PROTECTION FLOAT SWITCH (FS-2) - TANK 3 TO MECHANICAL ROOM
  - B - 1" PVC CONDUIT - FOR FUTURE USE - TANK 2B TO MECHANICAL ROOM

- ABOVE GROUND ELECTRICAL**
- C - 3 PHASE POWER IN L1-L2-L3
  - D - 120 VAC CONTROL CIRCUIT FEED



RECLAIM SYSTEM DETAILS  
 NO SCALE

(IF FOOT VALVE IS RAISED, THE FLOAT SWITCH ALSO NEEDS TO BE RAISED)  
**KEEP A 10" DISTANCE BETWEEN THEM!**

**TIDAL WAVE**  
 AUTO SPA

DRAWING ISSUE & REVISION LOG

NO.	DATE	DESCRIPTION
1	04/14/2023	PERMIT SUBMITTAL DRAWINGS - AMFP

PROJECT NAME: TIDAL WAVE AUTO SPA  
 PROJECT NUMBER: JUNE 22-0072  
 PROJECT DESCRIPTION: TIDAL WAVE AUTO SPA  
 PROJECT ADDRESS: HWY 22 AND GORCE STREET, HILLSBORO, TX 75645

**P3.0**