

# Construction & Concrete Fastener

Zinc & Gal Finishes (Class 4.6, 5.8 & 8.8)  
Some Stainless 316

## DYNA (TYGA)

FLANGE, FLUSH & CSK HEAD

M6.5	25 – 55mm
M8	40 – 80mm
M10	40 – 120mm
M12	60 – 120mm
M16	65 – 145mm
M20	100 – 160mm



## TRUE (CLAW)

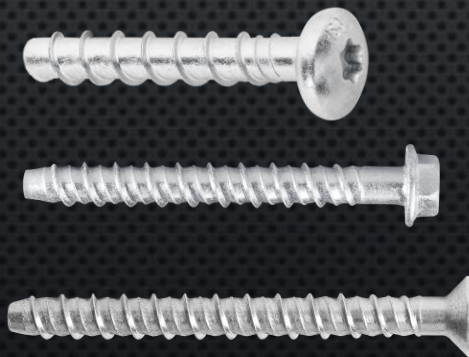
M6	55 – 120mm
M8	50 – 120mm
M10	40 – 120mm
M12	65 – 120mm
M16	105 – 190mm
M20	125 – 200mm



## XBOLT (SCREW)

FLANGE, DOME & CSK HEAD

M5	30 – 50mm
M6	30 – 100mm
M8	50 – 100mm
M10	60 – 150mm
M12	75 – 150mm
M16	100 – 150mm



## CHEMICAL STUD

FLAT & HEX HEAD

M5	30 – 50mm
M6	30 – 100mm
M8	50 – 100mm
M10	60 – 150mm
M12	75 – 150mm
M16	100 – 150mm



**NUTZ & BOLTZ**  
FASTENER & ENGINEERING SUPPLIES  
07 38123925

\*\* Please note that these Sizes, Lengths and Finishes are a guide only and may not be in stock or available \*\*

\*\* Larger and Longer bolts can be ordered in, but in Box quantities only \*\*



# Construction & Concrete Fastener

Zinc & Gal Finishes (Class 4.6, 5.8 & 8.8)  
Some Stainless 316

## DROP IN

### STANDARD & LIP

M6 x 25mm  
M8 x 30mm  
M10 x 40mm  
M12 x 50mm  
M16 x 65mm  
M20 x 80mm



## HIT SPIKE

### MUSHROOM & COUNTERSUNK

M5 25 – 100mm  
M6.5 38 – 100mm



## NAIL IN's

### ALLOY & NYLON

M5 25 – 40mm  
M6.5 25 – 100mm



## CONCRETE SCREWS

### COUNTERSUNK & HEX HEAD

M5 32 – 70mm  
M6.5 32 – 100mm



**NUTZ & BOLTZ**

FASTENER & ENGINEERING SUPPLIES

07 38123925

\*\* Please note that these Sizes, Lengths and Finishes are a guide only and may not be in stock or available \*\*

\*\* Larger and Longer bolts can be ordered in, but in Box quantities only \*\*



# Construction & Concrete Fastener

Zinc & Gal Finishes (Class 4.6, 5.8 & 8.8)  
Some Stainless 316

## PANTA PLUG & WALL KAT

PANTHA – METAL & NYLON

Suit 8g Screw x 43mm Long

WALL KAT – SQUARE & PHILIPS

M6.5 x 32mm



## HOLLOW WALL ANCHOR

ANCHOR – (WALL THICKNESS)

M4 x 30mm (0-4mm)  
M4 x 41mm (4-9mm)  
M4 x 47mm (9-15mm)  
M4 x 53mm (15-21mm)  
M4 x 67mm (30-38mm)  
M5 x 46mm (5-13mm)  
M5 x 59mm (5-17mm)  
M6 x 46mm (5-13mm)  
M6 x 59mm (5-17mm)



## WALL PLUGS

MUNGO WALL PLUGS  
MU SERIES

M6 45mm (Suite 8-10g)  
M8 50mm (Suits 12g)  
M10 60mm (Suits 14g)  
M12 70mm (Suits M8 – M10)



MU SERIES

M5 25mm (Suite 6g)  
M6 30mm (Suite 8-10g)  
M8 40mm (Suits 12g)  
M10 50mm (Suits 14g)  
M12 60mm (Suits M8 – M10)



COLOUR	HOLE & LENGTH	GAUGE SIZE
WHITE	5mm x 25-35mm	(Suite 4-6g)
RED	6mm x 25-50mm	(Suite 8-9g)
GREEN	6.5mm x 20-50mm	(Suite 10-12g)
BLUE	8mm x 25-50mm	(Suits 12-16g)
ORANGE	10mm x 35-60mm	(Suits M8)
GREY	12mm x 50-75mm	(suits (M10)



**NUTZ & BOLTZ**  
FASTENER & ENGINEERING SUPPLIES  
07 38123925

\*\* Please note that these Sizes, Lengths and Finishes are a guide only and may not be in stock or available \*\*

\*\* Larger and Longer bolts can be ordered in, but in Box quantities only \*\*



# Construction & Concrete Fastener

Zinc & Gal Finishes (Class 4.6, 5.8 & 8.8)  
Some Stainless 316

## STRUCTURAL ASSEMBLY

### BOLT, NUT & WASHER KIT

M12	30 – 200mm
M16	40 – 700mm
M20	40 – 700mm
M22	55 – 200mm
M24	50 – 700mm
M27	80 – 200mm
M30	75 – 650mm
M33	130 – 230mm
M36	90 – 600mm



## PURLIN BOLTS

### FLANGED BOLT & NUT KIT

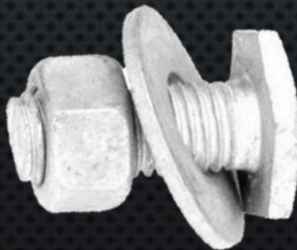
M12	30 – 82mm
M16	35 – 45mm



## FASCIA BOLTS

### BOLT, NUT & WASHER KIT

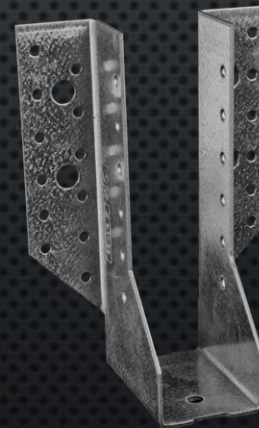
M10	25mm
M12	30 – 40mm
M16	30 – 40mm



## JOIST HANGER

### FOR TIMBER

35mm	90 – 190mm
45mm	90 – 190mm
50mm	90 – 190mm



**NUTZ & BOLTZ**

FASTENER & ENGINEERING SUPPLIES

07 38123925

\*\* Please note that these Sizes, Lengths and Finishes are a guide only and may not be in stock or available \*\*

\*\* Larger and Longer bolts can be ordered in, but in Box quantities only \*\*