

# Drilling & Tapping

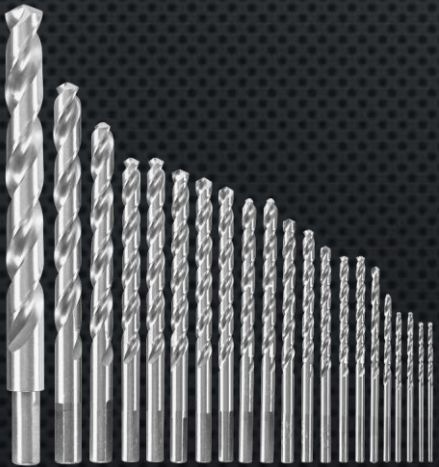
## Metric & Imperial Tap, Dies, Drills & Accessories

### DRILLING

#### METAL DRILLING

1 mm - 24 mm (1/16" - 1")  
(Individual)

DRILL SETS - METRIC & IMP  
LONG SERIES DRILLS



#### CONCRETE DRILLING

MASONRY DRILL - STANDARD  
MASONRY DRILL - SDS



#### WIDENING & DEBURRING

STEP DRILLS  
COUNTERSINK BITS



#### TIMBER DRILLING, BORING & CSK

COUNTERSINK DRILLS  
SPADE BITS



**NUTZ & BOLTZ**

FASTENER & ENGINEERING SUPPLIES

07 38123925

\*\* Please note that these Sizes, Lengths and Finishes are a guide only and may not be in stock or available \*\*

\*\* Larger and Longer bolts can be ordered in, but in Box quantities only \*\*



# Drilling & Tapping

## Metric & Imperial Tap, Dies, Drills & Accessories

### THREAD REPAIR

#### WIRE THREAD REPAIR

Metric & Imperial  
Thread Repair Kits



#### SOLID INSERT REPAIR

METRIC & IMPERIAL  
TAPSERTS



#### LOCKSERTS



#### E-ZSERTS



#### BOLT & SCREW EXTRACTION

SCREW EXTRACTORS



#### COBOLT

LEFT HAND DRILLS



#### THREAD CHASERS & FILES

Internal  
External



**NUTZ & BOLTZ**  
FASTENER & ENGINEERING SUPPLIES  
07 38123925

\*\* Please note that these Sizes, Lengths and Finishes are a guide only and may not be in stock or available \*\*

\*\* Larger and Longer bolts can be ordered in, but in Box quantities only \*\*



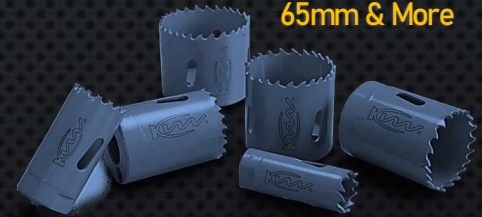
# Drilling & Tapping

## Metric & Imperial Tap, Dies, Drills & Accessories

### SAWS & ACCESSORIES

#### METAL HOLE SAWS

14mm	32mm
16mm	33mm
17mm	35mm
19mm	37mm
20mm	38mm
21mm	40mm
22mm	41mm
24mm	43mm
25mm	45mm
27mm	48mm
29mm	50mm
30mm	54mm
	60mm
	65mm & More



#### TIMBER HOLE SAWS

16mm	32mm
20mm	35mm
22mm	38mm
25mm	40mm
27mm	44mm
30mm	50mm
	54mm
	57mm
	60mm
	64mm
	68mm
	73mm
	76mm & More



#### ARBORS

SMALL SUITS UP TO 30mm  
LARGE SUITS OVER 32mm



#### BLADES

AIR SAW BLADES  
HACK SAW BLADES



\*\* Please note that these Sizes, Lengths and Finishes are a guide only and may not be in stock or available \*\*

\*\* Larger and Longer bolts can be ordered in, but in Box quantities only \*\*



# Drilling & Tapping

## Metric & Imperial Tap, Dies, Drills & Accessories

### TAPPING

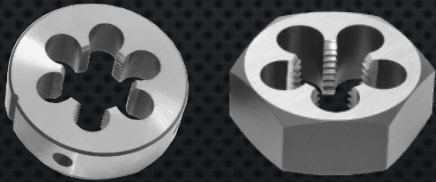
#### METRIC & IMPERIAL TAPER, INTER & BOTTOMING

METRIC	M2 – M20
METRIC FINE	M8 – M20
UNC	4-40 – 7/8"
UNF	4-48 – 7/8"
BSW	5/32 & 1/2"
BSP	1/8 – 1/2"
NPT	1/8 – 1/4"



#### METRIC & IMPERIAL BUTTON & DIE NUTS

METRIC	M2 – M20
METRIC FINE	M8 – M20
UNC	4-40 – 7/8"
UNF	4-48 – 7/8"
BSW	5/32 & 1/2"
BSP	1/8 – 1/2"
NPT	1/8 – 1/4"



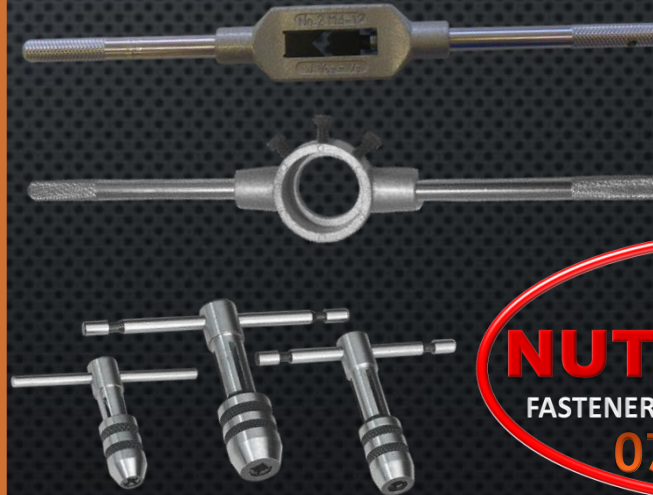
#### SPECIAL TAPS

Spiral Machine Taps  
Gun Machine Taps  
All in One Taps



#### HOLDERS

Tap Holders  
Button Die  
Bar & T Type  
1"  
1-1/2"  
2"



**NUTZ & BOLTZ**

FASTENER & ENGINEERING SUPPLIES

07 38123925

\*\* Please note that these Sizes, Lengths and Finishes are a guide only and may not be in stock or available \*\*

\*\* Larger and Longer bolts can be ordered in, but in Box quantities only \*\*



# Drilling & Tapping

## Metric & Imperial Tap, Dies, Drills & Accessories

### BITS & DRIVERS

#### PHILIPS

No. 1	50mm
No. 2	50, 75, 100 & 150mm
No. 3	50mm



#### SQUARE

No. 1	50mm
No. 2	50mm
No. 3	50mm



#### HEX (ALLEN)

M3	50mm
M4	50mm
M5	50mm
M6	50mm
M8	60mm



#### DRYWALL

No. 2	25mm
-------	------



#### MAGNETIC BOOSTER

1/4 to suit Driver Bits over 50mm



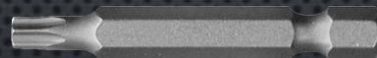
#### TRILOBE

No. 2	25mm & 50mm
-------	-------------



#### SECURITY TORX

T10	T30
T15	T40
T20	T45
T25	T50
T27	



#### SECURITY POST TORX

T10	T30
T15	T40
T20	T45
T25	T50
T27	



#### NUTSETTERS

1/4	42mm & 65mm
5/16	42mm & 65mm
3/8	42mm & 65mm



#### BIT HOLDERS

Magnetic Quick Release	65mm 150mm
------------------------	---------------



**NUTZ & BOLTZ**

FASTENER & ENGINEERING SUPPLIES

07 38123925

\*\* Please note that these Sizes, Lengths and Finishes are a guide only and may not be in stock or available \*\*

\*\* Larger and Longer bolts can be ordered in, but in Box quantities only \*\*