

Hoses & Fittings

Brass, Steel & Stainless

HOSES

FUEL

M6 (1/4) – M12 (1/2)

MULTIPURPOSE

M5 (3/16) – M19 (3/4)

CLEAR PVC

M3 (1/8) – M25 (1")



HOSE CLAMP

STAINLESS

9mm BAND 12mm BAND

10 – 16mm 60 – 80mm

12 – 22mm 70 – 90mm

16 – 27mm 80 – 100mm

20 – 32mm 90 – 110mm

25 – 40mm 100 – 120mm

30 – 45mm 110 – 130mm

35 – 50mm 120 – 140mm

40 – 60mm

50 – 70mm



SUPER CLAMP

ZINC

17 – 19mm 60 – 63mm

20 – 22mm 64 – 67mm

23 – 23mm 68 – 73mm

26 – 28mm 74 – 79mm

29 – 31mm 80 – 85mm

32 – 35mm 68 – 91mm

36 – 39mm 92 – 97mm

40 – 43mm 98 – 103mm

44 – 47mm 104 – 112mm

48 – 51mm 113 – 121mm

52 – 56mm 122 – 130mm



MINI CLAMP

ZINC

6mm

8mm

9mm

10mm

11mm

13mm

14mm

15mm

16mm

17mm



NUTZ & BOLTZ

FASTENER & ENGINEERING SUPPLIES

07 38123925

** Please note that these Sizes, Lengths and Finishes are a guide only and may not be in stock or available **

** Larger and Longer bolts can be ordered in, but in Box quantities only **

Hoses & Fittings

Brass, Steel & Stainless

O-CLIPS

ZINC

1/4	5 - 7mm
5/16	7 - 9mm
7/16	9 - 11mm
1/2	11 - 13mm
9/16	13 - 15mm
5/8	15 - 18mm
3/4	17 - 20mm
7/8	20 - 23mm
1"	23 - 27mm
1-3/16	28 - 31mm



P-CLIPS

ZINC

6mm
8mm
10mm
12mm
13mm
16mm
18mm
20mm
25mm
30mm
35mm
45mm
50mm

PLASTIC

6.4mm
7.9mm
9.5mm
12.7mm
15.8mm
19.4mm
25.4mm
31.8mm



NITTO FITTINGS

FEMALE

20SF
30SF
40SF
20SH
30SH
40SH
20SM
30SM
40SM

MALE

20PF	1/4FBSP
30PF	3/8FBSP
40PF	1/2FBSP
20PH	1/4BARB
30PH	3/8BARB
40PH	1/2BARB
20PM	1/4MBSP
30PM	3/8MBSP
40PM	1/2MBSP



BALL VALVES

FEMALE / FEMALE

1/4BSP
3/8BSP
1/2BSP
3/4BSP
1" BSP

MINI

1/8BSP
1/4BSP



NUTZ & BOLTZ

FASTENER & ENGINEERING SUPPLIES

07 38123925

** Please note that these Sizes, Lengths and Finishes are a guide only and may not be in stock or available **

** Larger and Longer bolts can be ordered in, but in Box quantities only **

Hoses & Fittings

Brass, Steel & Stainless

PLUGS

BSP		NPT	
1/8	28 tpi	1/8	27 tpi
1/4	19 tpi	1/4	18 tpi
3/8	19 tpi	3/8	18 tpi
1/2	14 tpi	1/2	14 tpi
3/4	14 tpi	3/4	14 tpi
1"	11 tpi	1"	11.5 tpi

METRIC

M12	1.5p
M16	1.5p
M18	1.5p
M20	1.5p
M22	1.5p
M24	1.5p



SOCKETS & REDUCING

BSP		NPT	
1/8	28 tpi	1/8	27 tpi
1/4	19 tpi	1/4	18 tpi
3/8	19 tpi	3/8	18 tpi
1/2	14 tpi	1/2	14 tpi
3/4	14 tpi	3/4	14 tpi
1"	11 tpi	1"	11.5 tpi

METRIC ADAPT & REDUCE

M12	1.5p	BSP - BSP
M16	1.5p	NPT - NPT
M18	1.5p	BSP - NPT
M20	1.5p	MET - BSP
M22	1.5p	MET - MET



NIPPLES & REDUCING

BSP		NPT	
1/8	28 tpi	1/8	27 tpi
1/4	19 tpi	1/4	18 tpi
3/8	19 tpi	3/8	18 tpi
1/2	14 tpi	1/2	14 tpi
3/4	14 tpi	3/4	14 tpi
1"	11 tpi	1"	11.5 tpi

METRIC ADAPT & REDUCE

M12	1.5p	BSP - BSP
M16	1.5p	NPT - NPT
M18	1.5p	BSP - NPT
M20	1.5p	MET - BSP
M22	1.5p	MET - MET



REDUCING BUSHES

BSP		NPT	
1/8	28 tpi	1/8	27 tpi
1/4	19 tpi	1/4	18 tpi
3/8	19 tpi	3/8	18 tpi
1/2	14 tpi	1/2	14 tpi
3/4	14 tpi	3/4	14 tpi
1"	11 tpi	1"	11.5 tpi

METRIC ADAPT & REDUCE

M12	1.5p	BSP - BSP
M16	1.5p	NPT - NPT
M18	1.5p	BSP - NPT
M20	1.5p	MET - BSP
M22	1.5p	MET - MET



NUTZ & BOLTZ

FASTENER & ENGINEERING SUPPLIES

07 38123925

** Please note that these Sizes, Lengths and Finishes are a guide only and may not be in stock or available **

** Larger and Longer bolts can be ordered in, but in Box quantities only **

Hoses & Fittings

Brass, Steel & Stainless

ADAPTORS & REDUCING

BSP		NPT	
1/8	28 tpi	1/8	27 tpi
1/4	19 tpi	1/4	18 tpi
3/8	19 tpi	3/8	18 tpi
1/2	14 tpi	1/2	14 tpi
3/4	14 tpi	3/4	14 tpi
1"	11 tpi	1"	11.5 tpi

METRIC ADAPT & REDUCE

M12	1.5p	BSP - BSP
M16	1.5p	NPT - NPT
M18	1.5p	BSP - NPT
M20	1.5p	MET - BSP
M22	1.5p	



THREADED ELBOWS & 45°

BSP		NPT	
1/8	28 tpi	1/8	27 tpi
1/4	19 tpi	1/4	18 tpi
3/8	19 tpi	3/8	18 tpi
1/2	14 tpi	1/2	14 tpi
3/4	14 tpi	3/4	14 tpi

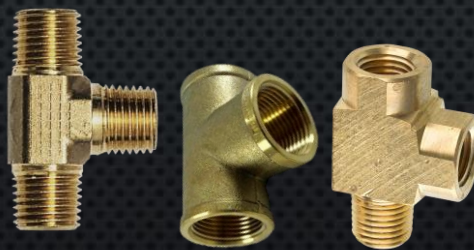
MALE x MALE MALE x FEMALE FEMALE x FEMALE



THREADED TEES

BSP		NPT	
1/8	28 tpi	1/8	27 tpi
1/4	19 tpi	1/4	18 tpi
3/8	19 tpi	3/8	18 tpi
1/2	14 tpi	1/2	14 tpi
3/4	14 tpi	3/4	14 tpi
1"	11 tpi	1"	11.5 tpi

MALE x MALE x MALE MALE x FEMALE x FEMALE FEMALE x FEMALE x FEMALE



CAPS

BSP		NPT	
1/8	28 tpi	1/8	27 tpi
1/4	19 tpi	1/4	18 tpi
3/8	19 tpi	3/8	18 tpi
1/2	14 tpi	1/2	14 tpi
3/4	14 tpi	3/4	14 tpi
1"	11 tpi	1"	11.5 tpi



NUTZ & BOLTZ

FASTENER & ENGINEERING SUPPLIES

07 38123925

** Please note that these Sizes, Lengths and Finishes are a guide only and may not be in stock or available **

** Larger and Longer bolts can be ordered in, but in Box quantities only **

Hoses & Fittings

Brass, Steel & Stainless

THREAD TO HOSETAIL

BSP		HOSETAIL
1/8	28 tpi	1/8 - 1/2
1/4	19 tpi	3/16 - 5/8
3/8	19 tpi	1/4 - 3/4
1/2	14 tpi	1/4 - 1"
3/4	14 tpi	3/8 - 1"
1"	11 tpi	1/2 - 1"

NPT		HOSETAIL
1/8	27 tpi	3/16 - 3/8
1/4	18 tpi	1/4 - 1/2
3/8	18 tpi	1/4 - 5/8
1/2	14 tpi	1/2 - 3/4
3/4	14 tpi	1/2 - 3/4
1"	11.5 tpi	1"



THREAD TO HOSETAIL 90°

BSP		HOSETAIL
1/8	28 tpi	1/8 - 3/8
1/4	19 tpi	3/16 - 5/8
3/8	19 tpi	1/4 - 5/8
1/2	14 tpi	3/8 - 3/4
3/4	14 tpi	1/2 - 1"
1"	11 tpi	3/4 - 1"

NPT		HOSETAIL
1/8	27 tpi	1/4 - 3/8
1/4	18 tpi	1/4 - 3/8
3/8	18 tpi	3/8 - 5/8



BARB ELBOWS & BARB TEES

HOSE ELBOW	3 WAY TEE
3/16	3/16
1/4	1/4
5/16	5/16
3/8	3/8
1/2	1/2
5/8	5/8
3/4	3/4
1"	1"



BARB JOINERS & REDUCES

STRAIGHT	REDUCED
3/16	3/16 - 5/16
1/4	1/4 - 5/16
5/16	1/4 - 3/8
3/8	5/16 - 3/8
1/2	5/16 - 1/2
5/8	3/8 - 1/2
3/4	3/8 - 5/8
1"	1/2 - 5/8
	1/2 - 3/4
	5/8 - 3/4
	3/4 - 1"



** Please note that these Sizes, Lengths and Finishes are a guide only and may not be in stock or available **

** Larger and Longer bolts can be ordered in, but in Box quantities only **

NUTZ & BOLTZ

FASTENER & ENGINEERING SUPPLIES

07 38123925

Hoses & Fittings

Brass, Steel & Stainless

COMPRESSION & OLIVES

EQUAL TUBE	MALE CONNECTOR BSP x TUBE	
1/8	1/8	1/8 - 3/8
1/4	1/4	3/16 - 1/2
5/16		
3/8	3/8	1/4 - 5/8
1/2	1/2	1/4 - 3/4
3/4	3/4	1/2 - 3/4

REDUCING TUBE

1/4 - 1/8
1/4 - 3/16
5/16 - 1/4
3/8 - 1/4
3/8 - 5/16
1/2 - 5/16
1/2 - 3/8



SAE FLARE FITTINGS

MALE FLARE UNION BSP x TUBE

1/8	1/8 - 3/8
1/4	3/16 - 1/2
3/8	1/4 - 5/8
1/2	1/4 - 3/4
3/4	3/4



FLARE NUT (SUIT TUBE) & CAPS

1/8
3/16
1/4
5/16
3/8
1/2
5/8
3/4



NYLON TUBE & FITTINGS

METRIC

4mm	1/8
5mm	3/16
6mm	1/4
8mm	5/16
10mm	3/8
12mm	1/2

OLIVES

1/8	
3/16	3/16
1/4	1/4
5/16	5/16
3/8	3/8
1/2	1/2
5/8	5/8
3/4	3/4



IMPERIAL



SPIGOTS

QUICK FIT

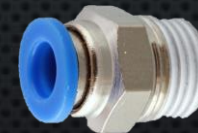
EQUAL TUBE

1/8	
3/16	4mm
1/4	6mm
5/16	8mm
3/8	10mm
1/2	12mm



BSP

1/8
1/4
3/8
1/2



IMPERIAL

1/8 - 5/16
3/16 - 1/2
1/4 - 1/2
3/8 - 1/2

METRIC

4 - 10mm
4 - 12mm
6 - 12mm
10 - 12mm

** Please note that these Sizes, Lengths and Finishes are a guide only and may not be in stock or available **

** Larger and Longer bolts can be ordered in, but in Box quantities only **

Hoses & Fittings

Brass, Steel & Stainless

IMPERIAL GREASE NIPPLE

STRAIGHT, 90° & 45°

BSP	NPT
1/8	1/8
1/4	1/4

BSW	BSF
1/4	1/4
5/16	5/16
	3/8

UNF
1/4
5/16
3/8



MERTIC GREASE NIPPLE

STRAIGHT, 90° & 45°

METRIC	METRIC FINE
M6	
M8	M8 (1.0p)
M10	M10 (1.0p)

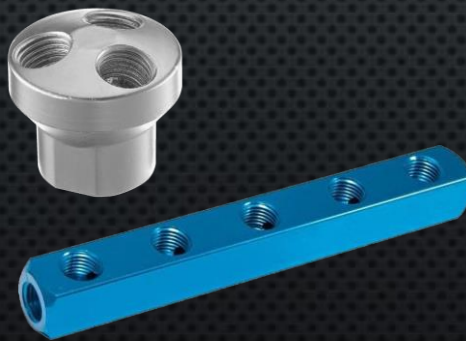


MANIFOLDS

STRAIGHT

1/4BSP	2 PORT
	3 PORT
	4 PORT
	5 PORT

3 WAY SPREADER
1/4BSP



GAUGES & FILTERS

GAUGES

BOTTOM ENTRY
REAR ENTRY



REGULATORS

REGULATOR WITH TRAP



NUTZ & BOLTZ

FASTENER & ENGINEERING SUPPLIES

07 38123925

** Please note that these Sizes, Lengths and Finishes are a guide only and may not be in stock or available **

** Larger and Longer bolts can be ordered in, but in Box quantities only **