

Hex Head Bolts

Metric & Imperial (Part Thread & Full Thread)
Plain, Zinc or Gal Plated Finish - CL 4.6 & G2

METRIC

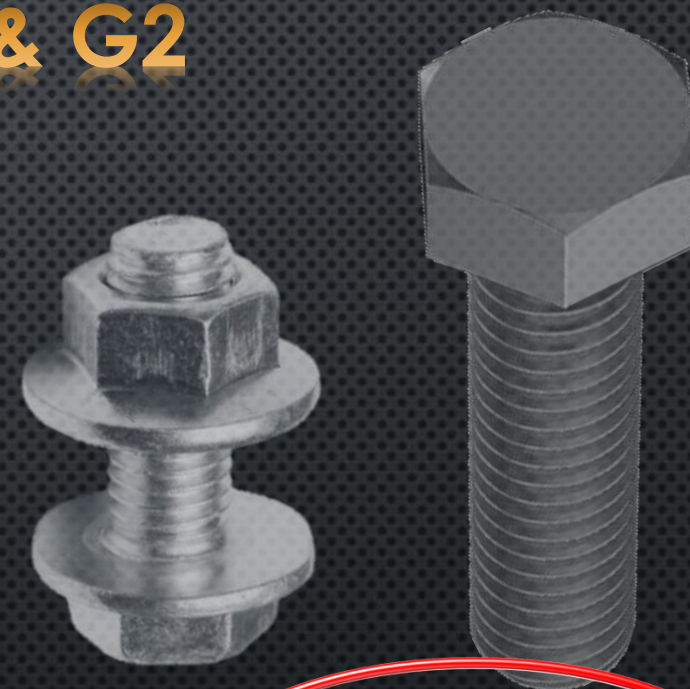
M5	10 - 50mm
M6	10 - 150mm
M8	12 - 150mm
M10	16 - 300mm
M12	16 - 350mm
M16	25 - 400mm
M20	35 - 450mm
M24	40 - 500mm
M27	100 - 250mm
M30	75 - 500mm
M33	100 - 250mm
M36	100 - 500mm

BSW

3/16 BSW	1/2 - 2"
1/4 BSW	1/2 - 6"
5/16 BSW	1/2 - 6"
3/8 BSW	3/4 - 6"
1/2 BSW	3/4 - 6"
5/8 BSW	1" - 7"
3/4 BSW	1-1/4" - 7"

PURLIN

M12	30 - 82mm
M16	30 - 45mm



NUTZ & BOLTZ

FASTENER & ENGINEERING SUPPLIES

07 38123925

** Please note that these Sizes, Lengths and Finishes are a guide only and may not be in stock or available **

** Larger and Longer bolts can be ordered in, but in Box quantities only **

Coach Screw & Cuphead Bolts

Metric & Imperial (Coarse)
Zinc or Gal Finish - CL 4.6 & G2

METRIC

CUPHEADS

M6	20 - 150mm
M8	20 - 180mm
M10	25 - 300mm
M12	30 - 350mm
M16	45 - 400mm
M20	50 - 500mm
M24	120 - 550mm

COACH SCREWS

M6	25 - 75mm
M8	30 - 130mm
M10	40 - 150mm
M12	50 - 200mm
M16	50 - 200mm
M20	100 - 200mm

BSW

CUPHEADS

1/4 BSW	3/4 - 6"
5/16 BSW	3/4 - 7"
3/8 BSW	3/4 - 12"
1/2 BSW	3/4 - 12"

ABOVE CUPHEADS SIZES
AVAILABLE BY ORDER ONLY



NUTZ & BOLTZ
FASTENER & ENGINEERING SUPPLIES
07 38123925

** Please note that these Sizes, Lengths and Finishes are a guide only and may not be in stock or available **

** Larger and Longer bolts can be ordered in, but in Box quantities only **

Metal Treads

Metric & Imperial (Coarse)

Silver & some Black Zinc Finish - CL 4.6 & G2

METRIC

M2	4 - 20mm
M2.5	4 - 25mm
M3	4 - 50mm
M4	6 - 100mm
M5	8 - 100mm
M6	8 - 100mm
M8	20 - 50mm

UNC

4-40 UNC	1/4 - 1-1/2"
6-32 UNC	1/4 - 1-1/2"
8-32 UNC	1/4 - 1-1/2"
5/32 BSW	3/8 - 3"
3/16 UNC	3/8 - 4"
1/4 UNC	3/8 - 4"
5/16 UNC	1/2 - 2"
3/8 UNC	3/4 - 2"

UNF

3/16 UNF	1/2 - 1-1/2"
----------	--------------

BSW

TANK BOLTS

3/16 BSW	3/8 - 3"
1/4 BSW	1/2 - 3"
5/16 BSW	3/4 - 3"



NUTZ & BOLTZ

FASTENER & ENGINEERING SUPPLIES

07 38123925

** Please note that these Sizes, Lengths and Finishes are a guide only and may not be in stock or available **

** Larger and Longer bolts can be ordered in, but in Box quantities only **

Threaded Rod

Metric & Imperial (Coarse & Fine)

Plain, Zinc or Gal Plated Finish - CL 4.6 & G2

METRIC

M3	1 Mtr
M4	1 Mtr
M5	1 Mtr
M6	1 Mtr
M8	1 & 3 Mtr
M10	1, 2.4, 3 & 3.6 Mtr
M12	1, 2.4, 3 & 3.6 Mtr
M16	1, 2.4, 3 & 3.6 Mtr
M20	1 & 3 Mtr
M24	1 & 3 Mtr
M30	1 & 3 Mtr
M36	1 & 3 Mtr

LEFT HAND THREAD

M6	1 Mtr
M8	1 Mtr
M10	1 Mtr
M12	1 Mtr
M16	1 Mtr

METRIC FINE

M10 (1.25p)	1 Mtr
M12 (1.25p)	1 Mtr
M12 (1.5p)	1 Mtr

UNC

1/8 BSW	3 Ft
5/32 BSW	3 Ft
3/16 BSW	3 Ft
1/4 BSW	3 Ft
5/16 BSW	3 Ft
3/8 BSW	3 Ft
7/16 BSW	3 Ft
1/2 BSW	3 Ft
9/16 BSW	3 Ft
5/8 BSW	3 Ft
3/4 BSW	3 Ft
7/8 BSW	3 Ft
1" BSW	3 Ft
1-1/8 BSW	3 Ft
1-1/4 BSW	3 Ft
1-1/2 BSW	3 Ft

UNF

3/16 UNF	3 Ft
1/4 UNF	3 Ft
5/16 UNF	3 Ft
3/8 UNF	3 Ft
7/16 UNF	3 Ft
1/2 UNF	3 Ft
1/2 BSF	3 Ft
5/8 UNF	3 Ft
3/4 UNF	3 Ft
7/8 UNF	3 Ft
1" -12 UNF	3 Ft
1" -14 UNF	3 Ft



NUTZ & BOLTZ

FASTENER & ENGINEERING SUPPLIES

07 38123925

** Please note that these Sizes, Lengths and Finishes are a guide only and may not be in stock or available **

** Larger and Longer bolts can be ordered in, but in Box quantities only **

Hex Nuts

Metric & Imperial (Coarse)

Plain, Zinc or Gal Finish - CL5 & G2

METRIC

M5
M6
M8
M10
M12
M14
M16
M20
M24

METRIC FINE

M8 (1.0p)
M10 (1.0p)
M10 (1.25p)
M12 (1.25p)
M12 (1.5p)
M14 (1.5p)
M16 (1.5p)
M18 (1.5p)
M20 (1.5p)

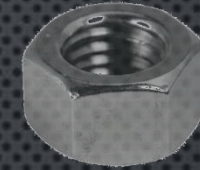
UNC

10-24 (3/16)
1/4 UNC
5/16 UNC
3/8 UNC
7/16 UNC
1/2 UNC
1/2 BSW
9/16 UNC
5/8 UNC
3/4 UNC

UNF

10-32 (3/16)
1/4 UNF
5/16 UNF
3/8 UNF
7/16 UNF
1/2 UNF
9/16 UNF
5/8 UNF
3/4 UNF

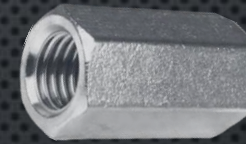
Hex Nut



Deep Nut



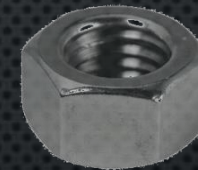
Coupling Nut



Slotted Nut



Left Hand Nut



NUTZ & BOLTZ
FASTENER & ENGINEERING SUPPLIES
07 38123925

** Please note that these Sizes, Lengths and Finishes are a guide only and may not be in stock or available **

** Larger and Longer bolts can be ordered in, but in Box quantities only **

Washers

Metric & Imperial

Plain, Zinc or Gal Finish - Mild Steel

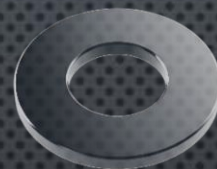
METRIC

M5
M6
M8
M10
M12
M14
M16
M18
M20
M22
M24
M27
M30

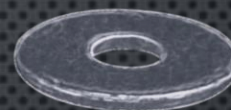
IMPERIAL

1/4"
5/16"
3/8"
7/16"
1/2"
9/16"
5/8"
3/4"
7/8"
1"
1-1/8"
1-1/4"
1-1/2"

Flat Washer



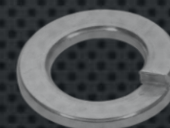
Panel Washer



Tooth Washer



Spring Washer



Square Washer



NUTZ & BOLTZ
FASTENER & ENGINEERING SUPPLIES
07 38123925

** Please note that these Sizes, Lengths and Finishes are a guide only and may not be in stock or available **

** Larger and Longer bolts can be ordered in, but in Box quantities only **