

Socket Head Cap Screws

Metric & Imperial (Coarse & Fine)
STAINLESS STEEL- 304 & 316 Grade

METRIC

M1.6	4 - 12mm
M2	4 - 20mm
M2.5	6 - 25mm
M3	6 - 60mm
M4	6 - 80mm
M5	8 - 100mm
M6	8 - 150mm
M8	12 - 150mm
M10	16 - 200mm
M12	20 - 200mm
M14	25 - 100mm
M16	25 - 200mm
M20	40 - 200mm
M22	40 - 300mm
M24	50 - 150mm

UNC

4-40	1/8 - 2"
5-40	1/4 - 1-1/2"
6-32	1/4 - 3"
8-32	3/16 - 3"
10-24 (3/16)	1/4 - 3"
12-24	
1/4 UNC	3/8 - 6"
5/16 UNC	1/2 - 6"
3/8 UNC	1/2 - 6"
7/16 UNC	5/8 - 4"
1/2 UNC	3/4 - 8"
1/2 BSW	3/4 - 4"
9/16 UNC	
5/8 UNC	1" - 6"
3/4 UNC	1" - 6"
7/8 UNC	2" - 5"
1" UNC	2" - 6"

UNF

4-48	3/16"
5-44	
6-40	1/2 - 1"
8-36	
10-32 (3/16)	1/4 - 3"
12-28	
1/4 UNF	3/8 - 3"
5/16 UNF	1/2 - 4"
3/8 UNF	1/2 - 3"
7/16 UNF	3/4 - 3"
1/2 UNF	3/4 - 4"
9/16 UNF	
5/8 UNF	1-1/2" - 4"
3/4 UNF	3" - 4"
7/8 UNF	
1" -14 UNF	



NUTZ & BOLTZ
FASTENER & ENGINEERING SUPPLIES
07 38123925

** Please note that these Sizes, Lengths and Finishes are a guide only and may not be in stock or available **

** Larger and Longer bolts can be ordered in, but in Box quantities only **

Button Head Cap Screws

Metric & Imperial (Coarse & Fine)
STAINLESS STEEL- 304 & 316 Grade

METRIC

M2	4 – 20mm
M2.5	4 – 25mm
M3	4 – 50mm
M4	6 – 50mm
M5	6 – 60mm
M6	8 – 80mm
M8	10 – 100mm
M10	12 – 120mm
M12	16 – 120mm
M16	50 – 80mm

UNC

4-40	1/4 – 1"
5-40	1/4 – 1"
6-32	1/4 – 1"
8-32	1/4 – 1-1/2"
10-24 (3/16)	1/4 – 2-1/2"
1/4 UNC	3/8 – 3"
5/16 UNC	1/2 – 3"
3/8 UNC	3/4 – 2-1/2"
7/16 UNC	
1/2 UNC	3/4 – 3"
5/8 UNC	2" – 3"

UNF

6-40	
8-36	
10-32 (3/16)	1/4 – 1-1/2"
1/4 UNF	3/8 – 2"
5/16 UNF	3/8 – 2"
3/8 UNF	3/8 – 2"
1/2 UNF	



NUTZ & BOLTZ
FASTENER & ENGINEERING SUPPLIES
07 38123925

** Please note that these Sizes, Lengths and Finishes are a guide only and may not be in stock or available **

** Larger and Longer bolts can be ordered in, but in Box quantities only **

Flat Head Cap Screws

Metric & Imperial (Coarse & Fine)

STAINLESS STEEL- 304 & 316 Grade

METRIC

M2	4 – 30mm
M2.5	4 – 30mm
M3	6 – 50mm
M4	6 – 60mm
M5	8 – 80mm
M6	8 – 100mm
M8	10 – 150mm
M10	16 – 150mm
M12	20 – 150mm
M14	
M16	25 – 150mm
M20	40 – 150mm

UNC

4-40	3/16 – 1-1/4"
5-40	1/4 – 1-1/2"
6-32	1/4 – 2-1/2"
8-32	1/4 – 2-1/2"
10-24 (3/16)	1/4 – 3"
12-24	3/4 – 1"
1/4 UNC	3/8 – 4"
5/16 UNC	1/2 – 4"
3/8 UNC	1/2 – 6"
7/16 UNC	3/4 – 4"
1/2 UNC	3/4 – 8"
5/8 UNC	1" – 8"
3/4 UNC	1" – 8"
7/8 UNC	2" – 8"
1" UNC	2" – 8"
1-1/4 UNC	3-1/2" – 8"

UNF

4-48	
5-44	
6-40	
8-36	
10-32 (3/16)	3/8 – 2"
1/4 UNF	1/2 – 2"
5/16 UNF	5/8 – 1-1/2"
3/8 UNF	5/8 – 2"
7/16 UNF	
1/2 UNF	1" – 2"
5/8 UNF	
3/4 UNF	



NUTZ & BOLTZ
FASTENER & ENGINEERING SUPPLIES
07 38123925

** Please note that these Sizes, Lengths and Finishes are a guide only and may not be in stock or available **

** Larger and Longer bolts can be ordered in, but in Box quantities only **

Cup Point Grub Screws

Metric & Imperial (Coarse & Fine)

STAINLESS STEEL- 304 & 316 Grade

METRIC

M1.6	3 – 6mm
M2	2 – 16mm
M2.5	3 – 16mm
M3	3 – 30mm
M4	4 – 30mm
M5	5 – 40mm
M6	6 – 50mm
M8	8 – 60mm
M10	10 – 80mm
M12	12 – 80mm
M14	
M16	16 – 100mm
M20	20 – 60mm
M24	25mm

UNC

4-40	1/8 – 1/2"
5-40	1/8 – 3/4"
6-32	1/8 – 1"
8-32	1/8 – 1"
10-24 (3/16)	1/8 – 1-1/2"
12-24	
1/4 UNC	1/4 – 1-1/2"
5/16 UNC	5/16 – 1-1/2"
3/8 UNC	3/8 – 2"
7/16 UNC	
1/2 UNC	1/2 – 2"
1/2 BSW	1/2 – 1-1/2"
9/16 UNC	
5/8 UNC	5/8 – 2"
3/4 UNC	3/4 – 2"

UNF

4-48	
5-44	
6-40	
8-36	
10-32 (3/16)	3/16 – 1-1/2"
12-28	
1/4 UNF	1/4 – 1-1/2"
5/16 UNF	5/16 – 1-1/2"
3/8 UNF	3/8 – 1-1/2"
7/16 UNF	
1/2 UNF	1/2 – 2"



NUTZ & BOLTZ
FASTENER & ENGINEERING SUPPLIES
07 38123925

** Please note that these Sizes, Lengths and Finishes are a guide only and may not be in stock or available **

** Larger and Longer bolts can be ordered in, but in Box quantities only **

Threaded Rod

Metric & Imperial (Coarse & Fine)
STAINLESS STEEL- 304 & 316 Grade

METRIC

M3	1 Mtr
M4	1 Mtr
M5	1 Mtr
M6	1 & 3 Mtr
M8	1 & 3 Mtr
M10	1 & 3 Mtr
M12	1 & 3 Mtr
M14	1 Mtr
M16	1 & 3 Mtr
M18	1 Mtr
M20	1 & 3 Mtr
M22	1 Mtr
M24	1 & 3 Mtr
M27	1 Mtr
M30	1 & 3 Mtr
M33	1 Mtr
M36	1 & 3 Mtr
M39	1 Mtr
M42	1 Mtr

METRIC FINE

M8 (1.0p)	1 Mtr
M10 (1.0p)	1 Mtr
M10 (1.25p)	1 Mtr
M12 (1.5p)	1 Mtr
M16 (1.5p)	1 Mtr

UNC

1/4 UNC	3 Ft
5/16 UNC	3 Ft
3/8 UNC	3 Ft
7/16 UNC	3 Ft
1/2 UNC	3 Ft
1/2 BSW	3 Ft
9/16 UNC	3 Ft
5/8 UNC	3 Ft
3/4 UNC	3 Ft
7/8 UNC	3 Ft
1" UNC	3 Ft
1-1/8 UNC	3 Ft
1-1/4 UNC	3 Ft
1-1/2 UNC	3 Ft

UNF

1/4 UNF	3 Ft
5/16 UNF	3 Ft
3/8 UNF	3 Ft
1/2 UNF	3 Ft



NUTZ & BOLTZ
FASTENER & ENGINEERING SUPPLIES
07 38123925

** Please note that these Sizes, Lengths and Finishes are a guide only and may not be in stock or available **

** Larger and Longer bolts can be ordered in, but in Box quantities only **

Hex Head Bolts

Metric & Imperial (Coarse & Fine)
STAINLESS STEEL- 304 & 316 Grade

METRIC

M3	6 – 40mm
M4	6 – 50mm
M5	8 – 60mm
M6	10 – 150mm
M8	12 – 150mm
M10	16 – 250mm
M12	20 – 250mm
M14	25 – 150mm
M16	30 – 300mm
M18	40 – 150mm
M20	40 – 300mm
M22	50 – 150mm
M24	50 – 280mm
M27	60 – 280mm
M30	90 – 400mm
M33	100 – 280mm
M36	100 – 280mm
M42	160 – 300mm

UNC

8-32 UNC	1/2 – 1-1/2"
10-24 (3/16)	1/2 – 2"
1/4 UNC	1/2 – 6"
5/16 UNC	1/2 – 6"
3/8 UNC	1/2 – 8"
7/16 UNC	1" – 6"
1/2 UNC	1" – 8"
½ BSW	1" – 3-1/2"
9/16 UNC	2-1/4" – 6"
5/8 UNC	1" – 8"
3/4 UNC	1-1/2" – 8"
7/8 UNC	3" – 8"
1" UNC	3-1/4 – 8"

UNF

10-32 (3/16)	1/2 – 2"
1/4 UNF	1/2 – 1"
5/16 UNF	5/8 – 1-1/4"
3/8 UNF	3/4 – 1"
7/16 UNF	1" – 1-1/2"
1/2 UNF	1" – 1-1/2"
9/16 UNF	
5/8 UNF	1-1/4" – 2"



NUTZ & BOLTZ
FASTENER & ENGINEERING SUPPLIES
07 38123925

** Please note that these Sizes, Lengths and Finishes are a guide only and may not be in stock or available **

** Larger and Longer bolts can be ordered in, but in Box quantities only **

Metal Threads

Metric & Imperial (Coarse & Fine) Pan & Countersunk 304 & 316 Grade

METRIC

M1.6	4 – 10mm
M2	4 – 25mm
M2.5	4 – 30mm
M3	5 – 50mm
M4	6 – 80mm
M5	8 – 100mm
M6	8 – 100mm
M8	16 – 100mm

UNC

4-40 UNC	1/8 – 1-1/2
6-32 UNC	1/8 – 3"
8-32 UNC	1/4 – 3"
10-24 (3/16)	1/4 – 3"
12-24 UNC	3/8 – 2"
1/4 UNC	3/8 – 4"
5/16 UNC	3/4 – 3"

UNF

10-32 (3/16) 3/8 – 2"



** Please note that these Sizes, Lengths and Finishes are a guide only and may not be in stock or available **

** Larger and Longer bolts can be ordered in, but in Box quantities only **

Cuphead Bolts & Coach Screws

Metric & Imperial
STAINLESS STEEL- 304 & 316 Grade

CUPHEADS

METRIC

M6	20 - 80mm
M8	20 - 150mm
M10	25 - 150mm
M12	40 - 240mm
M16	70 - 150mm

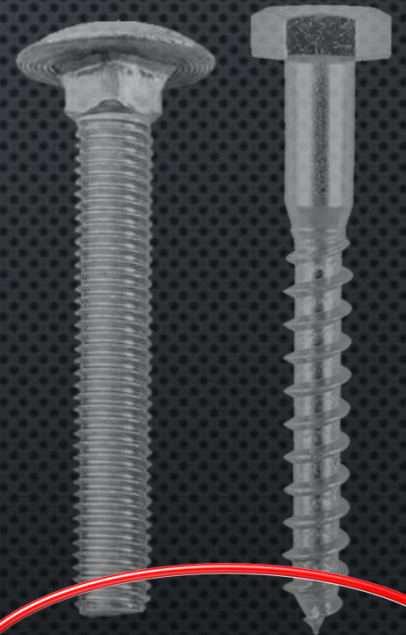
UNC

1/4 UNC	3/4 - 6"
5/16 UNC	1" - 6"
3/8 UNC	1" - 6"
1/2 UNC	1-1/4" - 6"

COACH SCREWS

METRIC

M6	30 - 120mm
M8	30 - 150mm
M10	40 - 150mm
M12	40 - 150mm
M16	100mm



NUTZ & BOLTZ
FASTENER & ENGINEERING SUPPLIES
07 38123925

** Please note that these Sizes, Lengths and Finishes are a guide only and may not be in stock or available **

** Larger and Longer bolts can be ordered in, but in Box quantities only **

Flange Head Bolts

Metric & Imperial (Coarse & Fine)
STAINLESS STEEL- 304 & 316 Grade

METRIC

M6	16 – 30mm
M8	16 – 40mm
M10	20 – 30mm
M12	25mm

UNC

1/4 UNC	1/2 – 1-1/2"
5/16 UNC	3/4 – 1-1/2"
3/8 UNC	3/4 – 1-1/2"



NUTZ & BOLTZ
FASTENER & ENGINEERING SUPPLIES
07 38123925

** Please note that these Sizes, Lengths and Finishes are a guide only and may not be in stock or available **

** Larger and Longer bolts can be ordered in, but in Box quantities only **

Hex Nuts

Metric & Imperial (Coarse & Fine)
STAINLESS STEEL- 304 & 316 Grade



METRIC

M2
M2.5
M3
M4
M5
M6
M8
M10
M12
M14
M16
M18
M20
M22
M24
M27
M30
M33
M36
M42

METRIC FINE

M8 (1.0p)
M10 (1.0p)
M10 (1.25p)
M12 (1.5p)
M14 (1.5p)
M16 (1.5p)

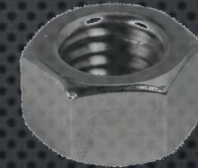
UNC

4-40
5-40
6-32
8-32
10-24 (3/16)
12-24
1/4 UNC
5/16 UNC
3/8 UNC
7/16 UNC
1/2 UNC
1/2 BSW
9/16 UNC
5/8 UNC
3/4 UNC
7/8 UNC
1" UNC
1-1/8 UNC
1-1/4 UNC
1-1/2 UNC

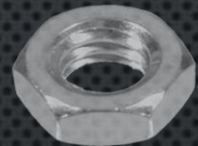
UNF

4-48
5-44
6-40
8-36
10-32 (3/16)
12-28
1/4 UNF
5/16 UNF
3/8 UNF
7/16 UNF
1/2 UNF
9/16 UNF
5/8 UNF
3/4 UNF
7/8 UNF
1" -14 UNF
1" -12 UNF
1-1/8 UNF
1-1/4 UNF
1-1/2 UNF

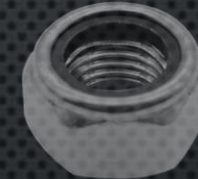
Hex Nut



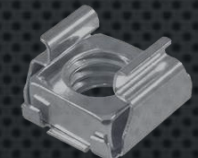
Jam Nut



Nyloc Nut



Cage Nut



Flange Nyloc



Flange Nut



Square Nut



Dome Nut



** Please note that these Sizes, Lengths and Finishes are a guide only and may not be in stock or available **

** Larger and Longer bolts can be ordered in, but in Box quantities only **

Washers

Metric & Imperial (Coarse & Fine)
STAINLESS STEEL- 304 & 316 Grade



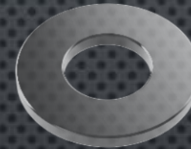
METRIC

M2
M2.5
M3
M4
M5
M6
M8
M10
M12
M14
M16
M18
M20
M22
M24
M27
M30
M33
M36
M42

IMPERIAL

1/8
5/32
3/16
1/4"
5/16"
3/8"
7/16"
1/2"
9/16"
5/8"
3/4"
7/8"
1"
1-1/8"
1-1/4"
1-1/2"

Flat Washer



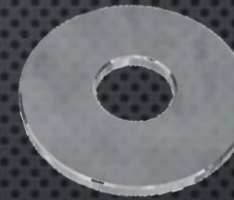
Bellville Washer



Crinkle Washer



Panel Washer



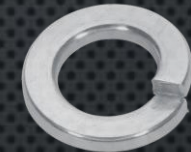
Cup Washer



Wave Washer



Spring Washer



Int & Ext Tooth Washer



** Please note that these Sizes, Lengths and Finishes are a guide only and may not be in stock or available **

** Larger and Longer bolts can be ordered in, but in Box quantities only **