



MONICA VERMA, CISO & FOUNDER

A DIVE INTO THE SEISMIC SHIFT IN CYBERSECURITY

How to build security in the world of uncertainties and opportunities?

CYBERCRIME IS A LOT LIKE HUMAN SPECIES.

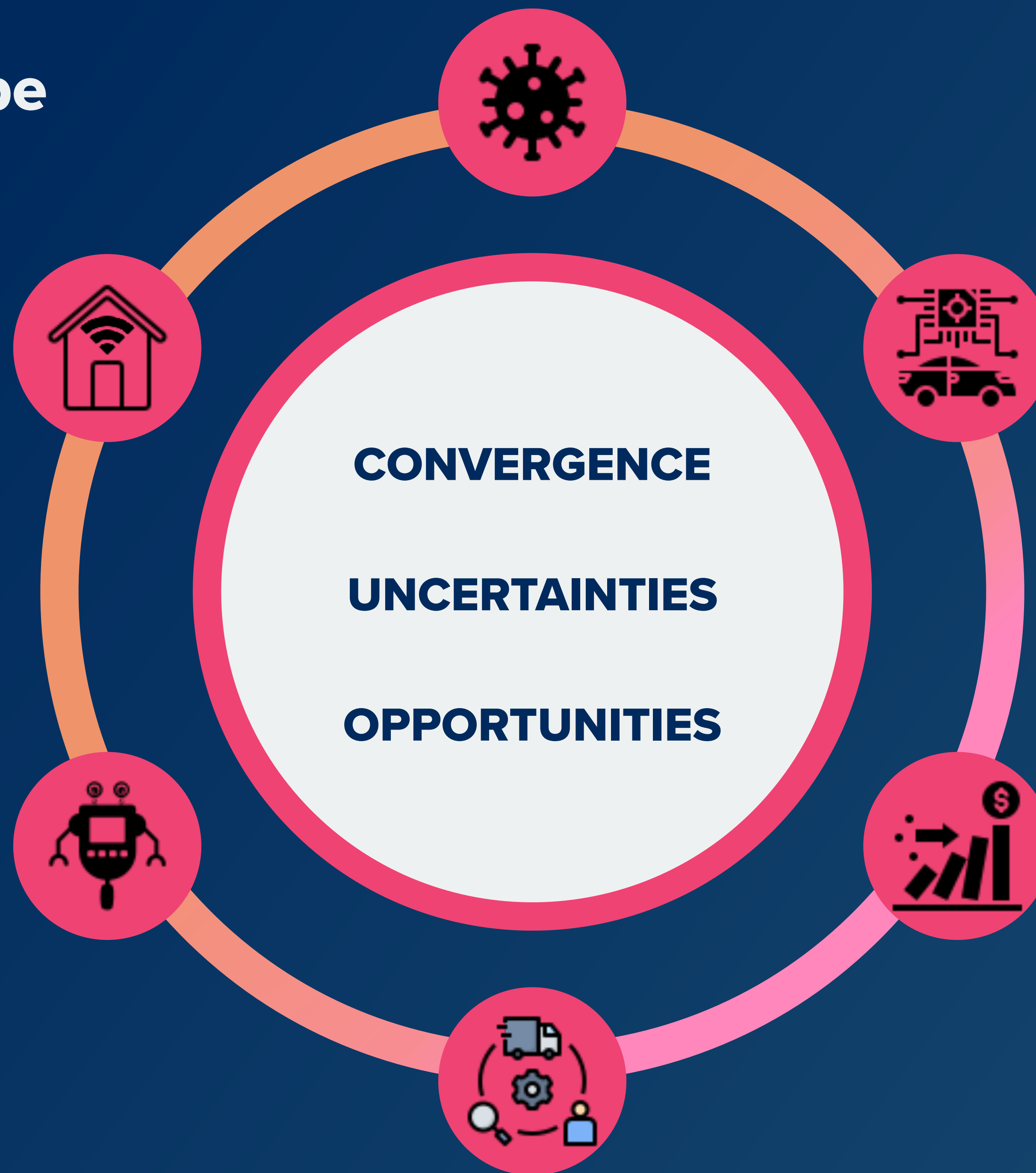
IT IS AN EVOLUTION.



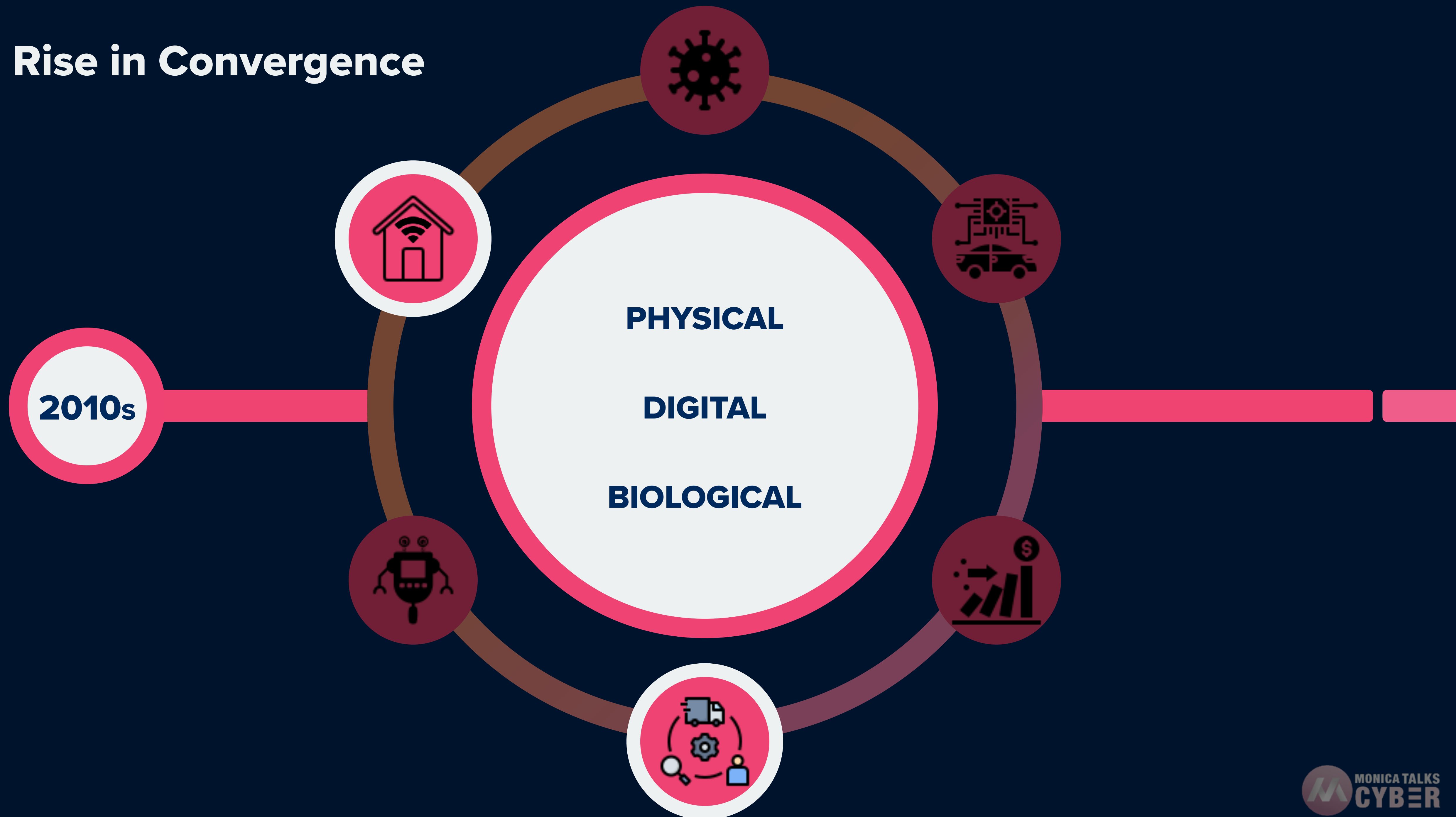
Source: The Economist

Zut alors! Nous avons été hackés!

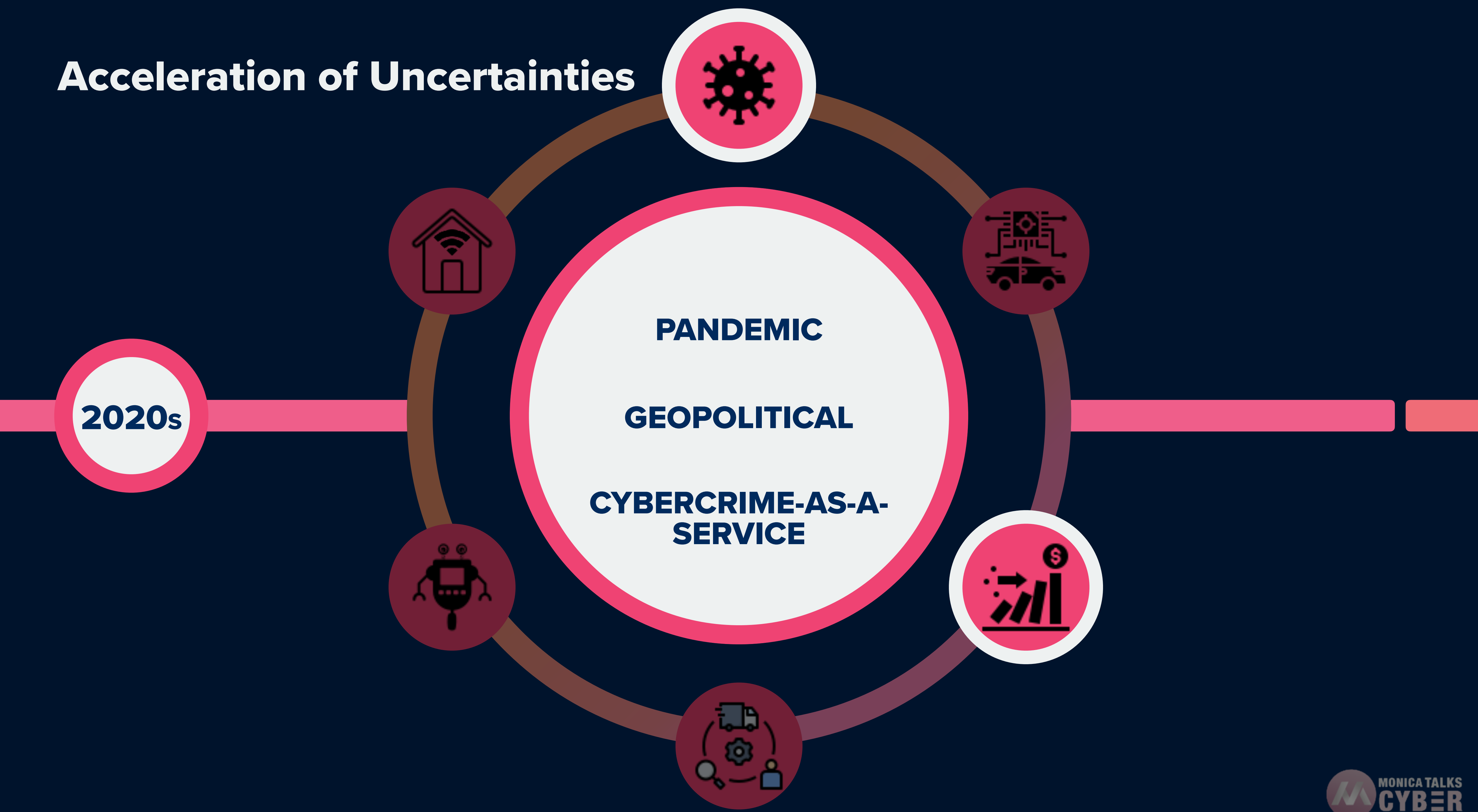
Digital Landscape



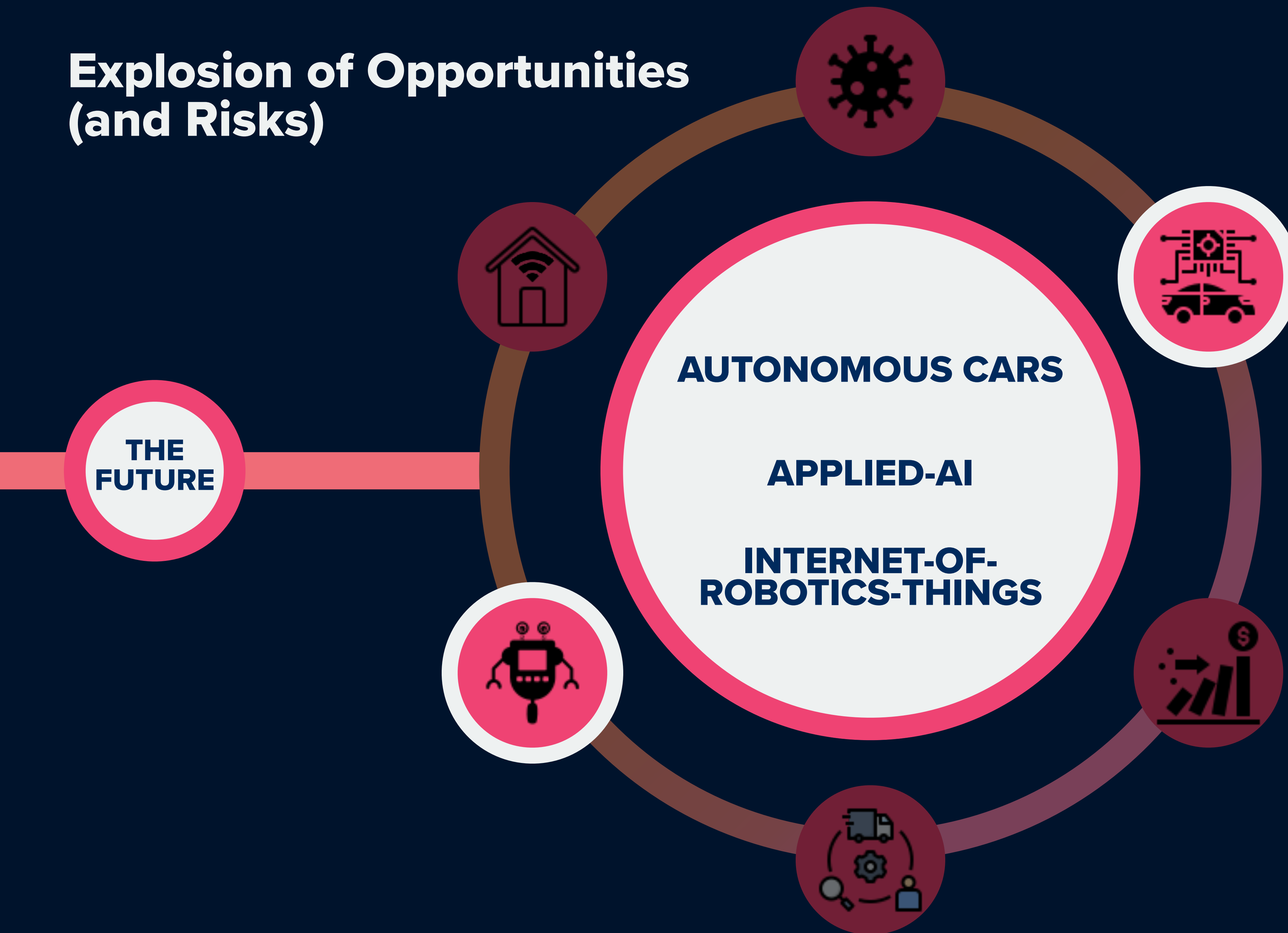
Rise in Convergence



Acceleration of Uncertainties



Explosion of Opportunities (and Risks)



“PUT SIMPLY, WE BELIEVE AUGMENTED REALITY IS GOING TO CHANGE THE WAY WE USE TECHNOLOGY FOREVER.

WE’RE ALREADY SEEING THINGS THAT WILL TRANSFORM THE WAY YOU WORK, PLAY, CONNECT AND LEARN.”

— TIM COOK





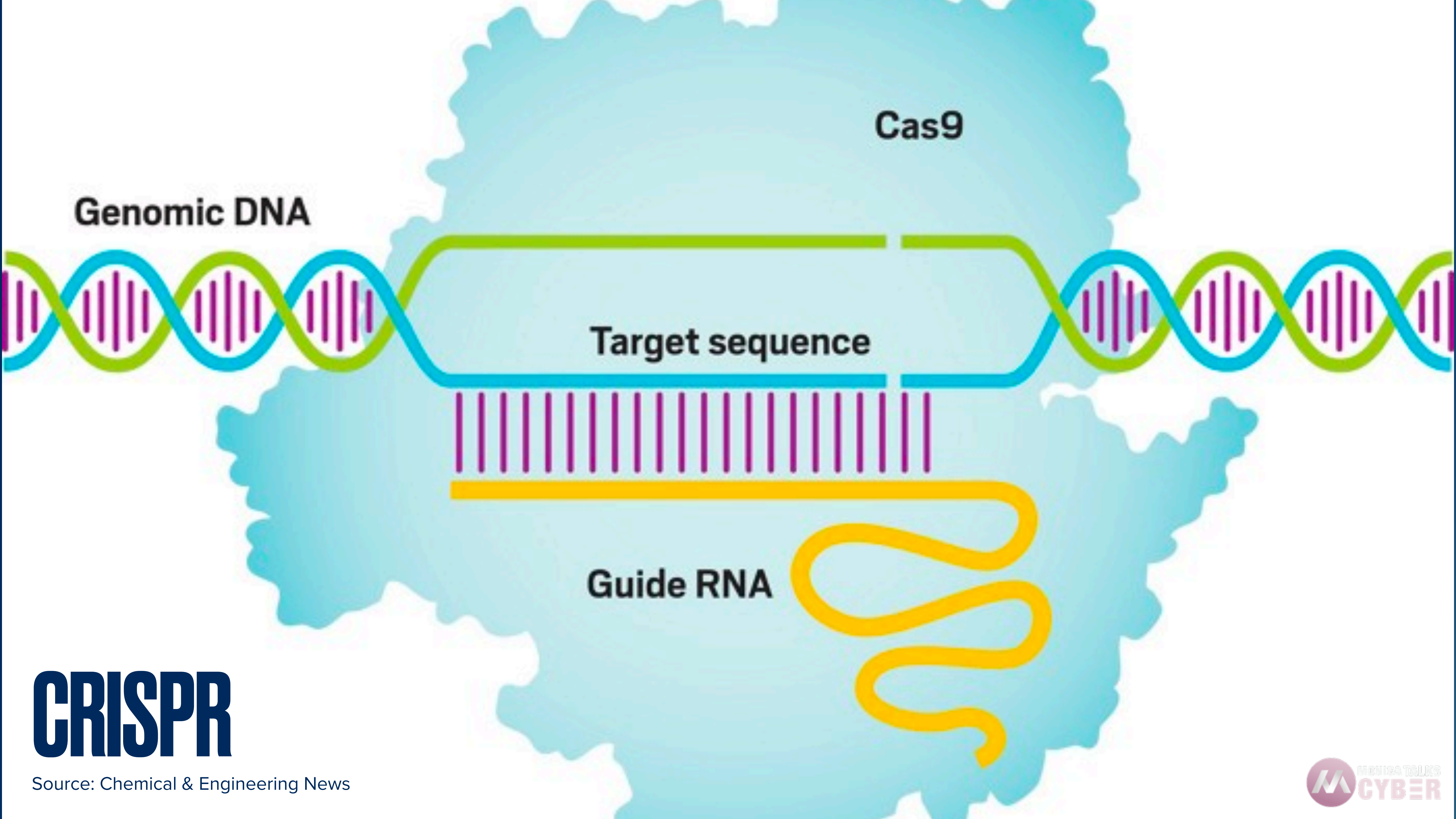
Class: [1]

Class: [1]

Class: [1]

Class: [1]



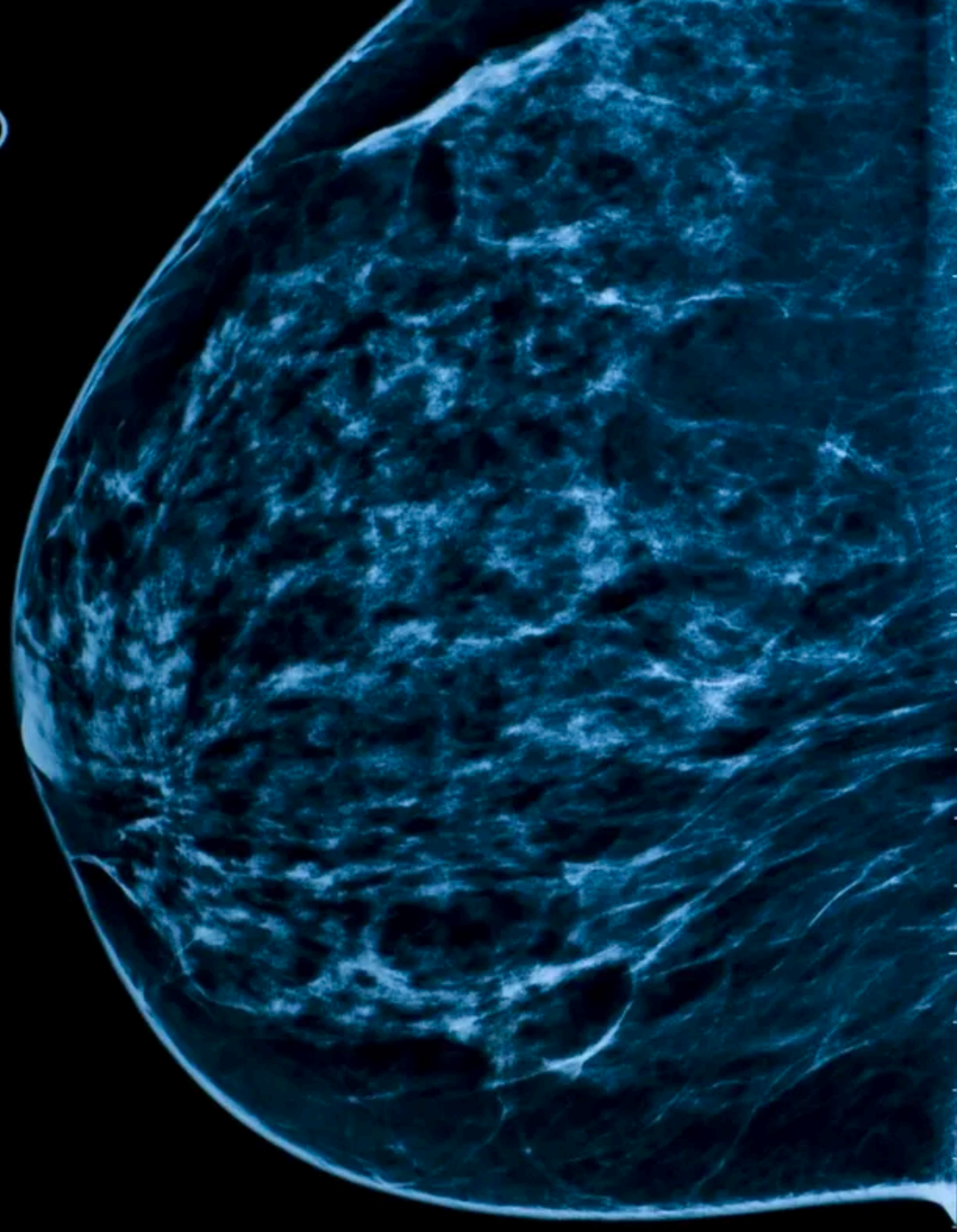


CRISPR

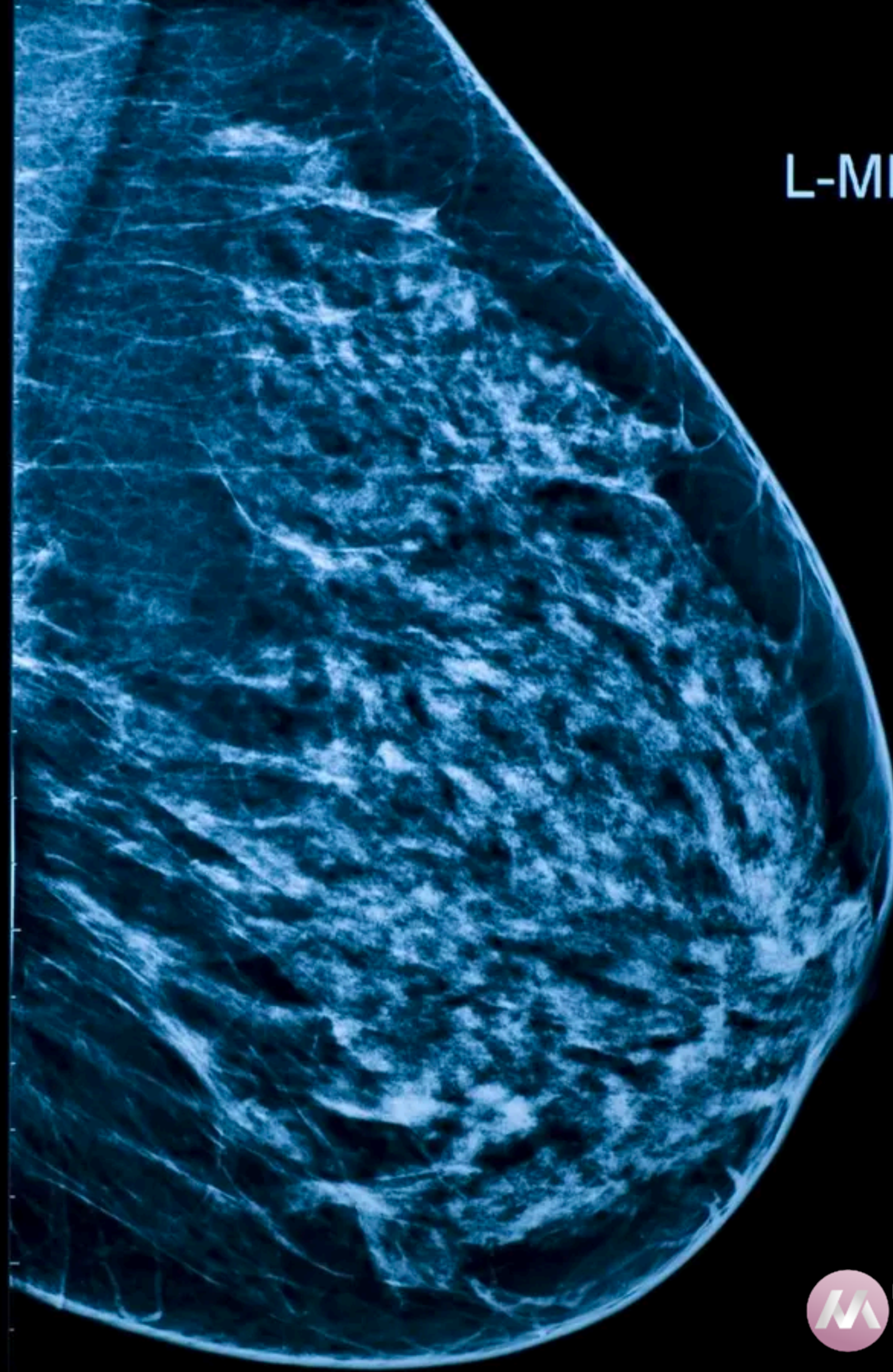
Source: Chemical & Engineering News



R-MLO



L-MLO

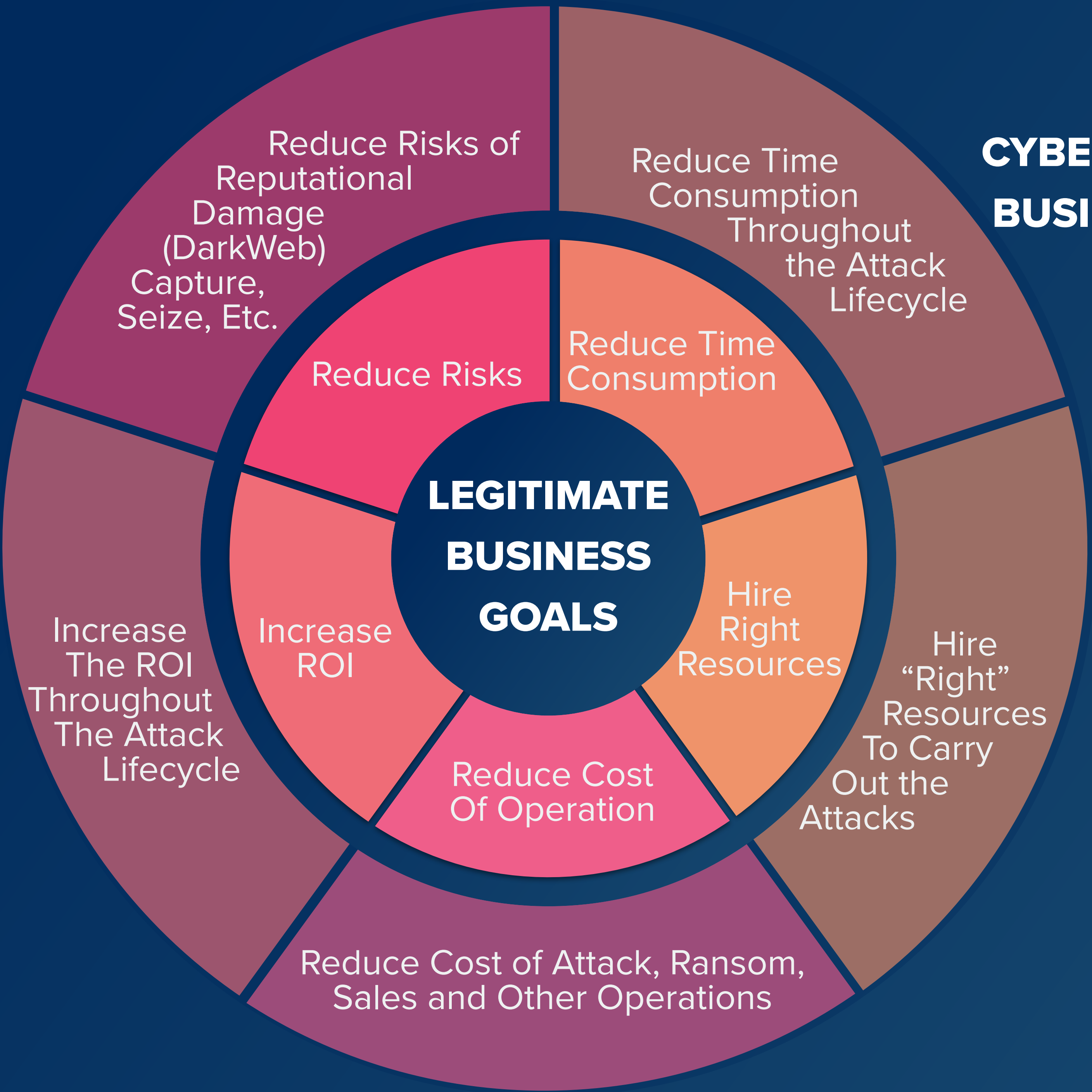


CYBERCRIME AS A SERVICE



**CYBERCRIMINALS
ARE SENTIENT**

CYBERCRIMINALS ARE SENTIENT





2019

CYBERCRIME COST \$2.9 MILLION

2020

\$24 AVERAGE COST OF CYBERCRIME

2021

\$11.4 MILLION COSTS WORLDWIDE

**PERPETRATORS CONTINUE TO BE
INCREASINGLY RUTHLESS AND METHODICAL
IN THEIR MODI OPERANDI.**

— EUROPOL, IOCTA REPORT 2021





Source: CNN

 TikTok
@deeptomcruise

 MONICA TALKS
CYBER

**IN THE NEXT 10 YEARS, WE'RE GOING TO
REINVENT EVERY INDUSTRY ON THIS PLANET.**

— PETER DIAMANDIS, CO-AUTHOR, THE FUTURE IS FASTER THAN YOU THINK

HOW DO WE GO FORWARD?

**IT'S IMPERATIVE THAT ORGANIZATIONS
PLAN AND INVEST IN “LONGER-LASTING”
SECURITY MEASURES.**

— LINDY CAMERON, CEO, NCSC

**WHAT EXACTLY IS
“LONGER-LASTING”?**

EVOLUTION-DRIVEN CYBERSECURITY

KEY PRINCIPLE: SURVIVAL OF THE FITTEST

ADAPTABILITY

EVOLUTION THROUGH ADAPTABILITY

ADAPTIVE SECURITY

EVOLUTION THROUGH ADAPTABILITY

ADAPTIVE SECURITY

Resilience

Regulatory-Driven

- Compliance-Based
- Audit-Requirements
- Regulatory frameworks per industry/data type

1

Risk-Driven

- Known Risks and Vulnerabilities
- Risks-Incidents Feedback Loop
- Risks and Incidents Management

2

Threat-Driven

- Threat actors as a part of risk model
- Threat-based investment in security
- Public-Private Partnerships (PPP)

3


Evolution-Driven

- Selective for different business scenarios
- Adaptive capabilities for The Unknowns e.g. crisis/attack
- Continuous visibility and ongoing monitoring (!= surveillance)

4

Maturity

**THE ACCELERATION RATE OF BOTH TECHNOLOGICAL
AND CYBERCRIME EVOLUTION IS
ACCELERATING.**



EVOLUTION-DRIVEN CYBERSECURITY ADAPTIVE SECURITY

Monica Talks Cyber

CISO | CEO | KEYNOTE SPEAKER

BOOK NOW AT

monicatalkscyber.com



BOOK ME

**AS YOUR SPEAKER
TODAY**

