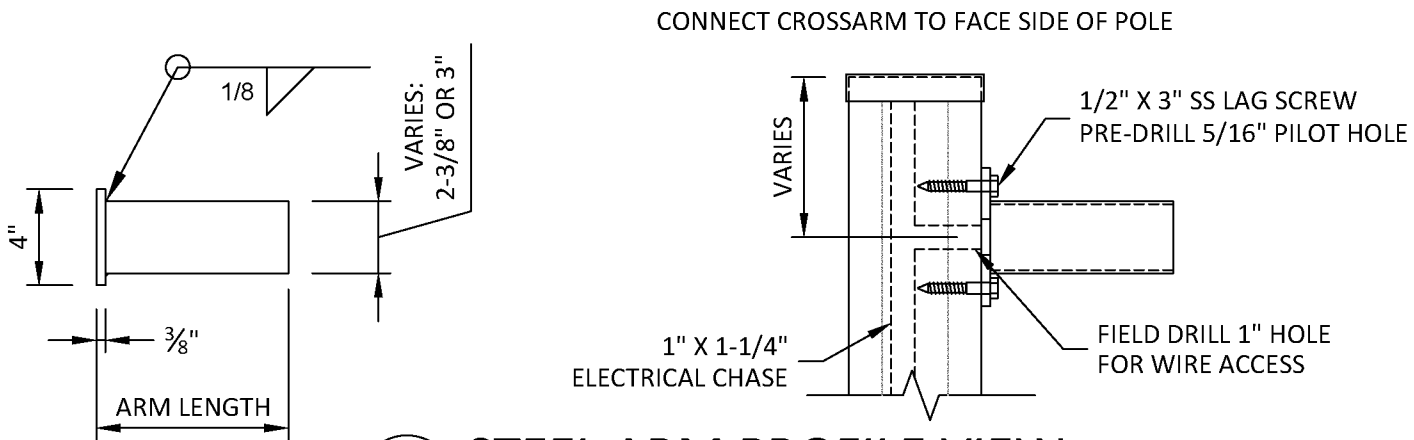
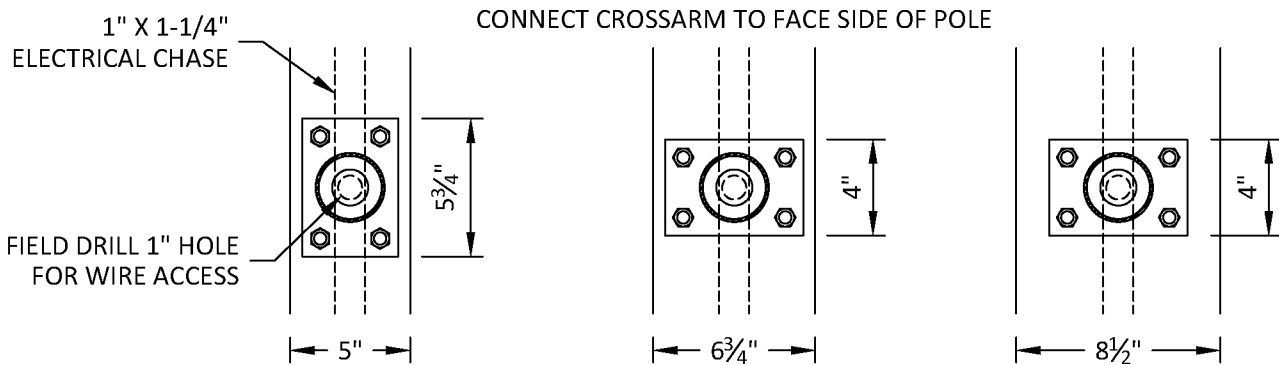


**1 STEEL ARM - END VIEW**  
 SCALE: 1-1/2" = 1'-0"



**2 STEEL ARM PROFILE VIEW**  
 SCALE: 1-1/2" = 1'-0"



**3 STEEL ARM MOUNTING**  
 SCALE: 1-1/2" = 1'-0"

**CA STEEL CROSS ARM DETAILS**

	CUSTOMER:	CA cross arm	_____ arm length (inches) 24" maximum	.2 or .3 pipe O.D. .2 = 2-3/8" .3 = 3"	PROJECT #
	PROJECT:				DATE:
	LOCATION:				PAGE 1 OF 1
	SPECIFICATION: CA _____			APPROVED BY:	