

The Voice of the Turtle



Friends

of MetroParks of Butler County

Friends of MetroParks of Butler County Monthly Newsletter

January, 2019

FOMPBC Officers

President:

Bill Walker

Vice-President,

Nick Lengyel

Secretary:

Robin James

Treasurer:

Larry Gersbach

Nominating Chair:

Roger Koch

Publicity Chair:

Bill Walker

Outreach Chair:

Michel Price

Finance Chair:

Richard Burgstrom

Grants & Fund Raiser Chair

Robin James

Membership Chair:

Nick Lengyel

Events Chair

Carri Mosier

Web Master:

Craig Wiseman

Newsletter Editor:

Bill Walker

January Board Meeting! Friends of MetroParks of Butler County

Wednesday, January 9, 2019

Butler County Historical Society

327 N 2nd Street, Hamilton, OH 45011

7:00-9:00 PM



Letter from the President

Happy New Year!

Last year in the parks was fun and exciting. We lost some old friends and made many new ones. This year promises to offer even more to look forward to.

My family and I just got back from a week in (sometimes) sunny Louisiana. The weather was not always cooperative, but the food surely met expectations. We did get a chance to take a swamp boat ride and see a variety of scaled and feathered denizens of Lake Martin. Then on to New Orleans for rain, jazz, cooking lessons, and good food. It almost was a shame to come back north.

Coming up in January is a Winter Tree Identification hike at Huffman Park in Fairfield. Another January hike will be an Owl hike at Harbin Park in Fairfield. Lots of fun at Chrisholm MetroPark at Show and Tell at the Farm. Don't miss the Middletown hike series.

February will bring us Dinner Murder Mystery and Volunteer Appreciation Night. In other words, it's always a good day to visit our parks. Hope to see you there soon.

Bill Walker, President FOMPBC

Upcoming Events

Show and Tell on the Farm



Come out and enjoy Show and Tell on the Farm at Chrisholm MetroPark. Topics this month include: Whose Mitten is this?, Bird Beak Buffet, Migrate, Hibernate, and Tolerate, First Farmers, Whose Tracks are These?, Farming by the Moon, Feathers, Fat and Fur, ABC's of Farm Life, and Can We See a Shadow?

Fun on the Farm is on Thursdays from 6:30-7:30pm and Sunday's from 2:00-4:00pm

Middletown Winter Hike Series



Join us outside for a hike at one, two, or all three great Middletown locations this winter! The last Saturday of the month, these hikes will begin at 10:00 a.m., and range from 1-4 miles. Enjoy a social, family-friendly hike, and learn about the outdoor options Middletown has to offer. Warm up with a hot cup of homemade soup after each hike! Those who participate in all 3 hikes will earn a commemorative 2019 Middletown Winter Hike button. Hikes will be lead by Bulls Run Nature Sanctuary, MetroParks of Butler County, and the City of Middletown. Registration is required at <http://signup.com/go/ajNFcjC>. Contact naturalist@bullsrn.org for more information!

Saturday, January 26th, 10:00am-12:00pm

Smith Park-500 Tytus Ave, Middletown Oh 45042

Owl Hike



Join the MetroParks of Butler County and the City of Fairfield Parks & Recreation for a Unique experience into the park after Dark! Explore the winter woods to call for owls and listen for other nocturnal animals. Free and open to all ages. Meet at the shelter next to the scenic overlook. Registration is requested by calling 513.867.5348. Walk-ups are welcome!

Saturday, January 26th, 6:00-7:00PM

Harbin Park 1300 Hunter Rd Fairfield OH 45014

Be on the Lookout for these future events

Murder Mystery Dinner,
Meet the Planets: Moon and Mars.

Did You Know

Kroger Community Rewards Update

FOMPBC organization # TM866

Kroger is committed to helping our communities grow and prosper. Year after year, local schools, churches and other nonprofit organizations earn \$4 million in Greater Cincinnati, Dayton and Northern Kentucky through their Community Rewards program. FOMPBC is one of the Many wonderful organizations that benefit from this program.

How Can YOU Help Us?

In April 2017 Kroger’s updated their Community Rewards process and software. As of April, supporters will no longer have to re-enroll their Kroger Plus Card to earn dollars for your organization. This will make it easier for you to support us! Please take a moment and make sure you are enrolled and supporting FOMPBC. <https://www.kroger.com/account/enrollCommunityRewardsNow>

Once you’re enrolled you will earn rewards for FOMPBC every time you shop and use your Plus Card.



Amazon Smile

What is Amazon Smile?

Amazon Smile is a simple and automatic way for you and your family to support FOMPBC every time you shop from Amazon, at no cost to you. Instead of shopping at Amazon.com you go to <https://smile.amazon.com>. You will find the exact same low prices, vast selection and convenient shopping experience as Amazon.com, with the bonus that Amazon will donate a portion of the purchase price to FOMPBC.

Migrate, Hibernate, or Tolerate

By Lara Askill
Agriculture Education Farm Manager

I wish migration was part of my family’s travel plans this winter...brrrr, it’s cold outside. Ever stop and wonder how our native animals survive during the winter? They have three choices: migrate, hibernate, or tolerate. Let’s look at some examples that live here at MetroParks of Butler County.



Migrate – Where do the small but mighty Ruby-throated Hummingbirds (*Archilochus colibris*) go before the temperatures start to freeze? They migrate by flying from Eastern North America to Central America and sometimes cross the Gulf of Mexico in one non-stop flight. Why do they leave this area in the winter? The main diet of a Ruby-throated Hummingbird is drinking nectar from flowers and eating small insects; neither of which are readily available here during the cold months.



Hibernate – In MetroParks, we have both true hibernators and the napper snacker types. The Groundhog (*Marmota monax*) is considered a true hibernator. During its almost 5 month nap, the groundhog's body temperature, breathing, heartbeat, and metabolic rate is drastically reduced to conserve energy.

Examples of our napper snacker hibernators include raccoons, opossums, and skunks. If the weather is not to their liking, they will sleep for a few days and will wake up to feed when it warms up a bit.

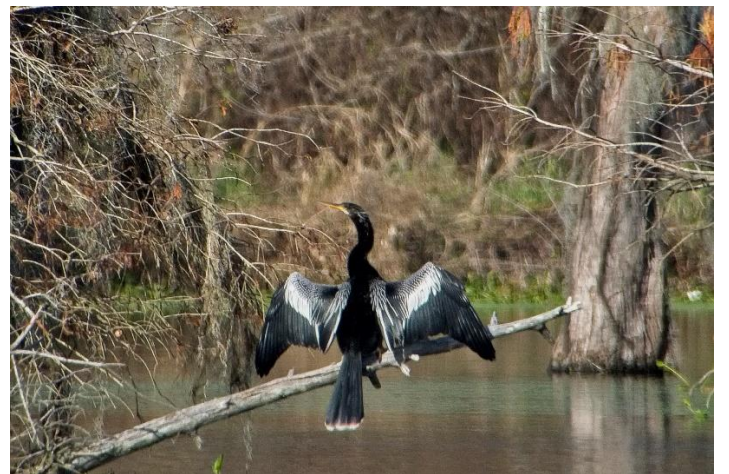


Have you seen the spotted salamanders emerge from their hibernation at some of our park sites? These beautiful amphibians slumber underground for many months throughout the cold season. During one of the early rains, usually in February, they will crawl to the surface and migrate to the vernal pools they were born in. Could it be said that this animal hibernates AND migrates?



Tolerate – Look at any well-stocked bird feeder after a blizzard and you will find several examples of native birds that have learned to tolerate our long, cold, dark winters. The Yellow-shafted Northern Flicker (*Colaptes auratus*) varies its diet depending on the season. It eats insects such as ants and beetles on the ground during the spring/summer and then primarily eats seeds and berries in the fall/winter.

Critter Corner, Louisiana Edition



Like our Facebook Page for updates on:

- Upcoming members events & meetings
- Volunteering with MPX
- MPX programming



Volunteering in December



Chi Psi Fraternity assisting with honeysuckle removal 12/2/18



Breakfast with Santa volunteers December 16, 2018

****Don't forget to update your hours and stay on top of them throughout the year. If you have hours to report, please enter into Volunteer software by the end of the year or email them to Amy Pellman. Hours entered are reported annually and can assist in Grant writing applications!****

Contact Us

Give us a call or visit us on the web for more information about service opportunities.

MetroParks Of Butler County
2051 Timberman Road
Hamilton OH 45013
513.867.5835
www.YourMetroParks.net

Or email Amy Pellman at apellman@YourMetroParks.net

January Birthday Corner!

Lawanna Casto	1/1	Emily Bottoni	1/14
Robert Casto	1/1	Beth Ann Dabbelt	1/20
Jordan Miller	1/2	Eric Burgess	1/21
Carol Souder	1/2	Joseph Holman	1/21
Steve Browne	1/3	Gabriel Rivera	1/27
Farha Watley	1/5	Veronica Price	1/31
Daniel Byrd	1/6		
Sue Tutas	1/12		



We L♥ve our Volunteers!!

Volunteer Spotlight



Meg & Ally Ernst-

How long have you lived or worked in Butler County? We actually don't live or work in Butler County! We do, however, live very near the Butler County line (in Harrison, OH) and have happy memories of visiting Governor Bebb Preserve. Margaret (Meg) remembers taking Ally (and her brother) there on field trips, events, or just a little recreation from the time they were little.

Tell me a little about your family: Meg grew up in the area and moved back when she and her husband were looking for a good place to grow their family. We began to volunteer at another park system back in 2011 and loved to get to do all the fun activities we could. All these years later, Ally is employed as an Interpretive Naturalist, and Meg at a Visitor Center, at that system, but we began to miss the fun of getting to volunteer together again. So, when there was a call for volunteers at Governor Bebb Preserve, it seemed like a good fit.

Do you have any hobbies? Meg enjoys wood carving, crafts, sewing, and researching and creating historically inspired clothing. Ally is an avid reader who enjoys baking and crochet. And we both enjoy a healthy dose of what we like to call "Mad Science," which is actually just trying things like wine making or dyeing fabric with natural dyes or finding the best way to recycle crayons using a crock pot and molds.

What do you like to do for fun or is there a fun fact about yourself you would like to share? (Editor's note: see other answers!)

What do you love most about volunteering for MetroParks? What we love about volunteering for MetroParks? We get to inspire others with an appreciation of the local history and how those people were so resourceful and clever under challenging circumstances AND we get to spend this time with each other, in such a gem of a location as Governor Bebb Preserve. We would encourage anyone who might be considering volunteering to have a "buddy" you like spending time with and jump right in! We always enjoy it and feel like the staff at MetroParks is always appreciative and great to work with.

Upcoming Volunteer Opportunities

Murder Mystery Dinner

When: February 9, 2019

Where: Voice of America MetroPark-Ronald Reagan Lodge
7850 Voice of America Park Drive, West Chester OH 45069

What: Volunteers (age 18+) are needed to assist with setup, bussing tables and cleanup. Great opportunity for a small group! Contact Amy Pellman apellman@YourMetroParks.net for more information.

Feeder Fill

When: Flexible-Year Round

Where: Forest Run Welcome Center & (Bothwell)
1976 Timberman Road, Hamilton OH 45013

What: Families & Adults who volunteer will fill bird feeders at the bird viewing area located at the Welcome Center in the Timberman Ridge Area of Forest Run MetroPark. Filling feeders takes approximately 30 minutes and should be done 1 or 2 days each week between the hours of 9:00 a.m. and 4:00 p.m. By filling feeders and maintaining the feeder area, MetroParks is able to provide an excellent location for viewing birds. If interested, contact Joe Dumyahn at jdumyahn@YourMetroParks.net to schedule training.

Nest Box Monitor

When: **March – August 2019**

Where: Monitoring sites throughout MetroParks

Register: by March 1, 2019. **Email Joe Dumyahn** at jdumyahn@YourMetroParks.net

What: Learn about becoming a volunteer Nest Box Monitor with MetroParks! Volunteers are needed to monitor nest boxes every 3-4 days from the beginning of March through the end of August. Monitors will record data to be submitted to the Cornell Lab of Ornithology. Monitoring sites are available in several parks. Nest Box Monitoring is a great way to learn about nesting birds and enjoy the outdoors.

Ongoing Service Opportunities

Welcome Center – Middletown River Center **NEW OPPORTUNITY******

When: Tentatively M/W/F/Saturday

Where: Middletown River Center 120 South Carmody Blvd., Middletown OH 45044

What: Volunteers (age 18+) are needed at the Welcome Center of the Middletown River Center. Duties include welcoming park customer/owners with a smile and providing information about programs and the parks. Training provided. Contact Sara Schapman sschapman@YourMetroParks.net. This position will require a background check. Details will be provided during interview.

Trail Ambassadors – Great Miami River Trail

When: Flexible

Where: Great Miami River Trail – Trenton to Middletown Section

What: Trail Ambassadors monitor the trail at least 4 hours a month on their bicycle. Trail Ambassadors report maintenance and safety concerns to MetroParks staff, assist trail users when necessary, provide information to trail users, and perform light trail maintenance. Contact Amy Pellman apellman@YourMetroParks.net for more information.

Group Service Projects

When: Flexible

Where: Flexible

What: MetroParks always has various projects for groups to complete! If you have a youth group, church group, student group, or business group that is interested in scheduling a private service day, contact Amy Pellman apellman@YourMetroParks.net for more information. Please allow 3-6 months for planning.

Program/Event & Preparation Support

When: Flexible

Where: Multiple Locations

What: Park Connections staff presents multiple education, recreation, and conservation programs and events throughout the year. Volunteers are needed to help with preparing for MetroParks events and programs. Volunteers may create crafts, prepare signage, organize materials and supplies, clean materials and supplies, and other general tasks, as well as, volunteer for the program itself. Contact Amy Pellman apellman@YourMetroParks.net.

Welcome Center - Voice of America MetroPark

When: Weekends

Where: Voice of America MetroPark

Ronald Reagan Lodge, 7850 VOA Park Drive, West Chester OH 45069

What: Volunteers (age 18+) are needed at the Welcome Center of Voice of America MetroPark. Duties include welcoming park customer/owners with a smile and providing information about programs and the parks. Training provided. Contact Sara Schapman sschapman@YourMetroParks.net. This position will require a background check. Details will be provided during interview.

There is no "I" in Team, but we sure are glad there is "u" in volunteers! - Unknown



Join MetroParks of Butler County and the City of Fairfield for some exciting programming at Fairfield Parks!

LET'S GO HIKING SERIES

Free & Open to the Public
10:30 a.m. – 12:00 p.m.
2019 Locations to be determined

- 10/20/18 Fall Blooms
Harbin Park
- 11/17/18 Habitat Hike
Huffman Park
- 12/15/18 Surviving Winter
Harbin Park
- 1/19/19 Winter Tree ID
- 2/16/19 Tracks, Scats & Signs
- 3/16/19 Eastern Bluebirds
- 4/20/19 Spring Wildflowers
- 5/18/19 Spring Birding Hike
- 6/15/19 Creeking
- 7/20/19 Summer Wildflowers
- 8/17/19 Invasive Species
- 9/21/19 Autumn Birding Hike
- 10/19/19 Fall Wildflowers
- 11/16/19 Animal Homes
- 12/21/19 Surviving Winter

PRE-SMARTIES & SMARTIES

Programming for City of Fairfield Registered Preschool Students Only

- 11/13/18 Amazing Animals
- 2/5/19 Calling All Farm Hands
- 4/9/19 Animal Games



NATURE PROGRAMS

Free & Open to the Public
2019 Locations to be determined

- 11/3/18 2:00 – 3:30 p.m.
Autumn Leaves
Huffman Park
- 1/26/19 6:00 – 7:30 p.m.
Owl Hike
- 3/24/19 2:00 – 3:30 p.m.
Fossils
- 4/6/19 2:00 – 3:30 p.m.
Spring Babies
- 6/1/19 9:00 – 10:30 p.m.
Night Hike
- 7/2/19 6:30 – 8:00 p.m.
Water Conservation
- 9/7/19 2:00 – 3:30 p.m.
Amazing Animals
- 10/6/19 2:00 – 3:30 p.m.
Nature Craft

Registration is requested for the Let's Go Hiking Series and Nature Programming. Call 513.867.5348 to save your spot!

SHOW AND TELL ON THE FARM



MetroParks
of Butler County, OH

Show and Tell on the Farm

WHEN

Sundays 2:00 p.m. – 4:00 p.m.
Thursdays 10:00 a.m. – 11:00 a.m.
Through the end of February

WHERE

Chrisholm MetroPark
Chrisholm Historic Farmstead
2070 Woodsdale Road
Trenton, OH 45067

PRICE

FREE programs for all ages
No Registration Necessary

ABOUT

Come on over to Chrisholm Historic Farmstead for Show and Tell on the Farm. Each day will feature different themes with special guest stars — some furry & some feathery — crafts, and games! Come for any amount of time. Designed to delight kids and kids at heart.

January 3 Whose Mitten is This?

January 6 Bird Beak Buffet

January 10 Migrate, Hibernate, and Tolerate

January 13 First Farmers

January 17 Whose Tracks are These?

January 20 Farming by the Moon

January 24 Feathers, Fat, and Fur

January 27 ABC's of Farm Life

January 31 Can We See a Shadow?

February 3 Grow as We Go

February 7 It's All in the Snow

February 10 Love is Chocolate

February 14 Love is on the Farm

February 17 A Farmer to President of the USA

February 21 A Farmer's Native Friends

February 24 ABC's of Farm Life

February 28 Mini Gardens



513.867.5835 | YourMetroParks.net

Motor Vehicle Permit Required. FREE to Butler County Residents. Non-Residents \$5/daily or \$10/annually.



Bav 20181127 approved

VOLUNTEER APPRECIATION CELEBRATION



Volunteer Appreciation Celebration

WHEN Thursday, February 7, 2019
6:30 p.m. - 8:30 p.m.

WHERE Voice of America MetroPark
Ronald Reagan Lodge
7850 VOA Park Drive
West Chester OH 45069

RSVP Email Amy Pellman at
apellman@YourMetroParks.net
by **Friday, January 25, 2019**

ABOUT

You're invited to an evening in celebration of YOU! Without our amazing volunteers, much of what we do would not be possible. Join us as we show our appreciation for your volunteer efforts, time, and dedication to MetroParks of Butler County. The celebration will include: Hors D'oeuvres, Dinner, Door Prizes, Awards, and MORE!

513.867.5835 | YourMetroParks.net

Motor Vehicle Permit Required. FREE to Butler County Residents. Non-Residents \$5/daily or \$10/annually.



ACP/sjb 181211 approved

Murder Mystery Dinner



Murder Mystery Dinner

WHEN Saturday, February 9, 2019
6:00 p.m. – 9:00 p.m.

WHERE Voice of America MetroPark
Ronald Reagan Lodge
7850 Voice of America Park Drive,
West Chester OH 45069

PRICE \$35 per person or \$30 per person
for groups of 6 or more
Pre-registration is required

ABOUT

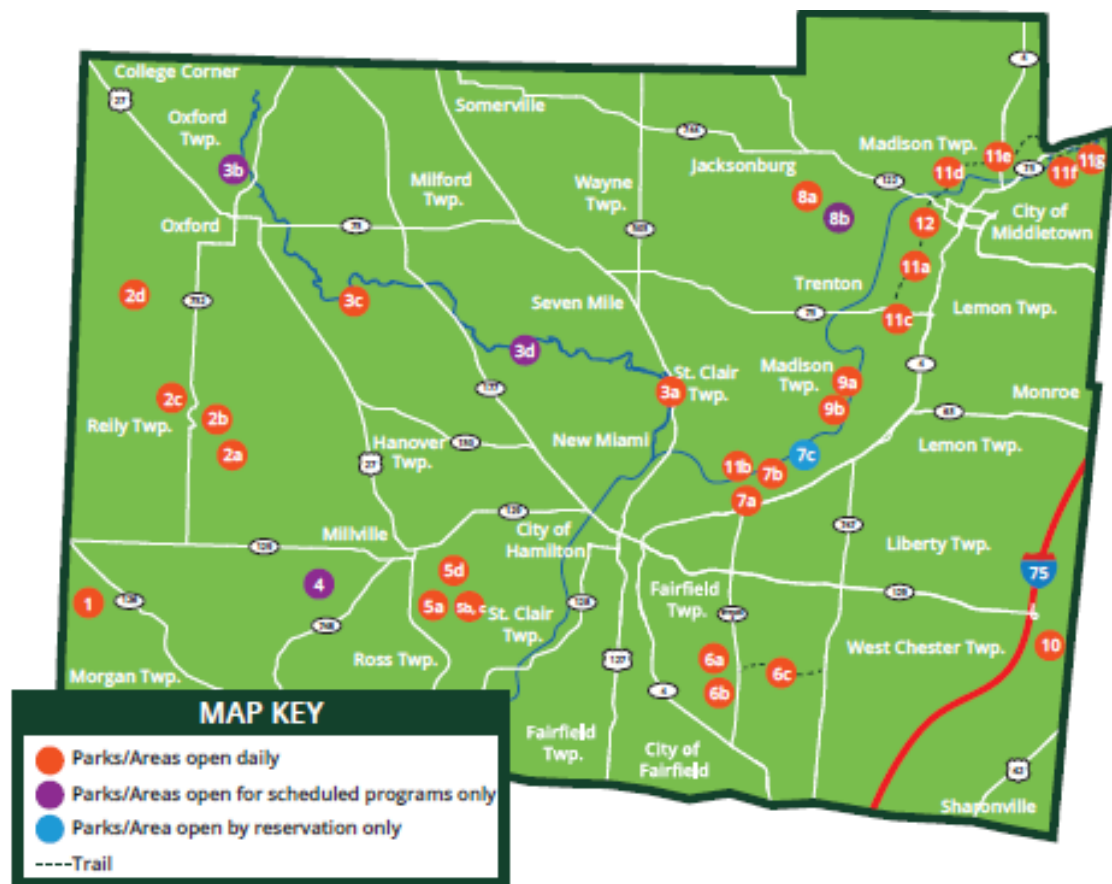
Join us from 6:00 p.m. – 9:00 p.m.
for an evening of fun and mystery!
Cocktails, appetizers, dinner, dessert,
and a great mystery show are included
in this killer evening! Please, arrive
30 minutes early to mingle with the
improv comedy cast.



513.867.5835 | YourMetroParks.net
Motor Vehicle Permit Required. FREE to Butler County Residents. Non-Residents \$5/daily or \$10/annually.



SS/sjb 180705 approved



- 1. GOVERNOR BEBB METROPARK**
 1979 Bebb Park Lane Okeana OH 45053
Bebb Natural Area
Dry Fork Campground
Pioneer Village
- 2. INDIAN CREEK METROPARK**
2A. Bunker Hill Cemetery
 5351 Reily-Millville Road Oxford OH 45056
2b. Oxford Road Area
 1899 Oxford-Reily Road (SR 732)
 Oxford OH 45056
2C. Springfield Road Area
 6500 Springfield Road Oxford OH 45056
2D. Pioneer Church
 3000 Indian Creek Road Oxford OH 45056
- 3. FOUR MILE CREEK METROPARK**
3A. Antenen Preserve
 2385 Treiber Road Hamilton OH 45011
3B. Mill Race Area
 5911 Morning Sun Road Oxford OH 45056
3C. Sycamore Bluffs Area
 3742 Lane: Mills Road Hamilton OH 45011
3D. Davidson Woods Area
 1200 HogUe Road Hamilton OH 45013
- 4. SALAMANDER RUN PRESERVE**
 4821 Layhigh Road Hamilton OH 45013
- 5. Forest Run MetroPark**
5A. Engle House - Little Dry Run - Administrative Office
 2051 Timberman Road Hamilton OH 45013
5B. Welcome Center
 1976 Timberman Road Hamilton OH 45013
5C. Timberman Ridge
 1976 Timberman Road Hamilton OH 45013
5D. Wildlife Preserve Area
 1810 New London Road Hamilton OH 45013
- 6. GILMORE METROPARK**
6A. Gilmore Road Area
 7950 Gilmore Road Hamilton OH 45015
6B. Bilstein Boulevard Area
 8500 Bilstein Boulevard Hamilton OH 45015
6C. Port Union Trail Area
- 7. RENTSCHLER FOREST METROPARK**
7A. Riegart Road Area
 5701 Riegart Road Fairfield Township OH 45011
7B. Line Hill Mound Area
 3620 Hamilton-Middletown Road Fairfield Township OH 45011
7C. Timberhill Area
 3976 Hamilton-Middletown Road Fairfield Township OH 45011
- 8. Elk Creek MetroPark**
8A. Sebald Park Area
 5580 Elk Creek Road Middletown OH 45042
8B. Meadow Ridge Area
 5101 Circle Parkway Middletown OH 45042
- 9. Chrisholm MetroPark**
9A. Chrisholm Historic Farmstead
 2070 Woodsdale Road Trenton OH 45067
9B. Woodsdale Regional Park
 1917 Woodsdale Road Trenton OH 45067
- 10. Voice of America MetroPark**
 7850 VOA Park Drive West Chester OH 45069
Athletic Complex
Ronald Reagan Lodge
Natural Areas & Chill Hill Sledding Hill
Wiggly Field Dog Park
Wheelhouse Outdoor Area
- 11. Great Miami River Trail**
11A. North Section
 50 Oxford State Road Middletown OH 45044
11B. South Section
 5701 Riegart Road Fairfield Township OH 45011
11C. Parking Areas
 50 Oxford State Road, Middletown OH 45044
 26 North. Carmody Boulevard, Middletown OH 45044
 2399 North Carmody Boulevard, Middletown OH 45042
 3801 North Verity Parkway, Middletown OH 45042
 4401 North Verity Parkway, Middletown OH 45042
- 12. Bicentennial Commons**
 Carmody Boulevard at Central Avenue

Friends of MetroParks of Butler County



Our Mission	To improve and preserve the parks for future generations, to educate and inform the public about the unique qualities of each MetroPark, and to encourage individuals and groups to participate in volunteer programs
Member Benefits	<ul style="list-style-type: none"> • Invitations to Member-only events • Opportunity to apply for funding to support MetroParks programs and projects • Attend Annual Meeting and have a voice in Friends activities and direction
Who Are We?	<p><i>Private citizens who have come together to:</i></p> <ul style="list-style-type: none"> • Sponsor programs & activities, promoting the use of MetroParks for conservation, education and recreation • Encourage volunteerism toward support of MetroParks of Butler County • Identify and implement improvements to the park • Assist in raising funds, securing donations, and obtaining grants monies to further MetroParks' mission

Yes, I/We want to be a member of Friends of MetroParks of Butler County!

Detach the form below and Mail it with your check to the address below

Become a Friend!

Simply fill in this form, detach and mail it with your check. Made payable to:

Friends of MetroParks of Butler County
PO Box 691
Hamilton, OH 45012

Pick an Annual Membership

- Individual - \$10
- Family - \$15
- Group/Business -\$100
- Donation - \$ _____

Name(s)/Contact _____ Date _____

Name(s)/Contact _____ Date _____

Group or Business Name _____

Address _____

City _____ State _____ Zip _____

Home/Business Phone _____ Cell Phone _____

Email (required to receive newsletter) _____