

# On, Wisconsin

Aren't state symbols amazing? Like the state bird, state fish, state grain? But what are Wisconsin's state symbols? You would be surprised how many there are.

Lots of people know the state animal is the badger, but did you know there is an official state soil: Antigo silt loam?

Many of Wisconsin's official state symbols show up on stamps.



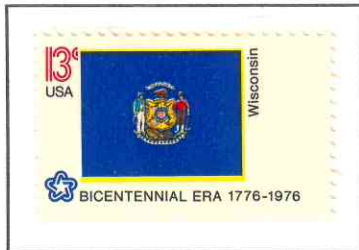
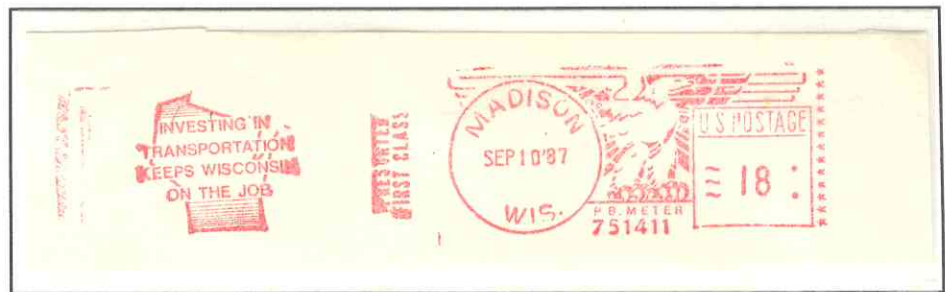
**Puzzle postcard showing stamp on Wisconsin's symbols, the robin and the wood violet.**

## CONTENTS:

1. Wisconsin
2. Animals
  - 2.1 Animal
  - 2.2 Wildlife Animal
  - 2.3 Fish
  - 2.4 Dog
  - 2.5 Insect
  - 2.6 Bird
  - 2.7 Domestic Animal
3. Plants
  - 3.1 Tree
  - 3.2 Grain
4. Rocks and Soils
  - 4.1 Mineral
  - 4.2 Fossil
  - 4.3 Stone
  - 4.4 Soil
5. Miscellaneous
  - 5.1 Dance
  - 5.2 Beverage

# On, Wisconsin

## 1. Wisconsin



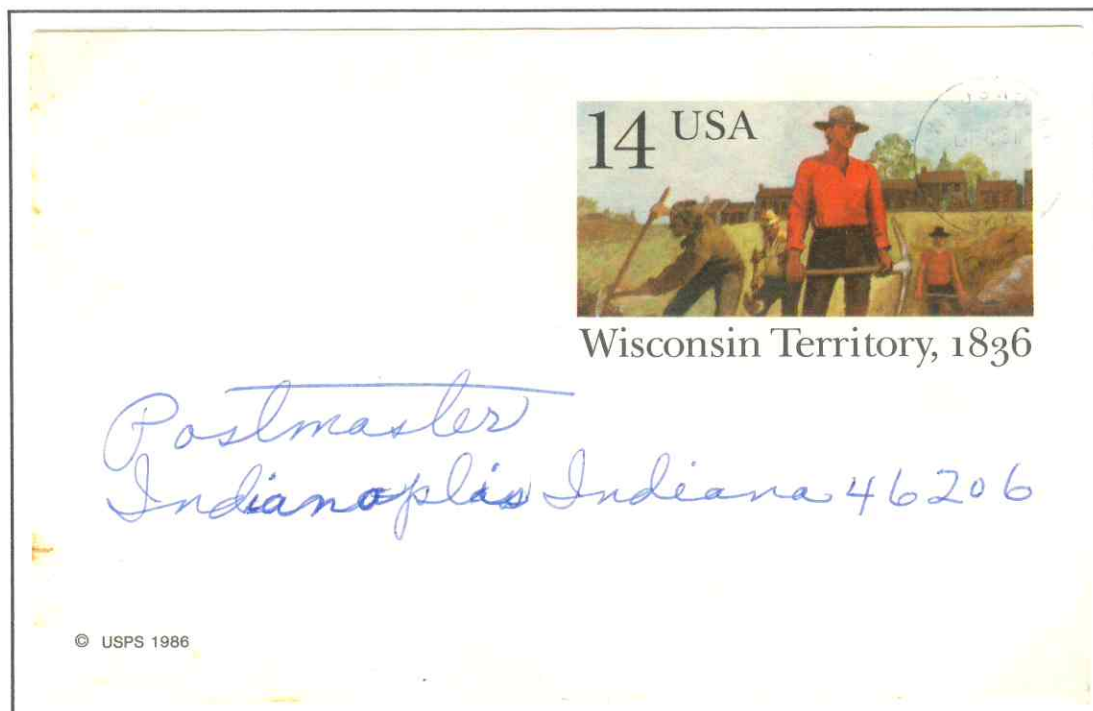
Wisconsin State Flag



Our motto:  
FORWARD



A pictorial cancellation showing a map of Wisconsin. The cancellation is on postal stationery.



Wisconsin Territory Postal Card

# On, Wisconsin

## 2 Animals

### 2.1 Animal

Wisconsin is known as the Badger State. The badger (*taxidea taxus*) is the official state animal, but there are very few actual badgers in the state. The lead miners were known as badgers because they dug holes in the sides of hills for their shelters, just like badgers do to dig dens.



This pictorial cancellation shows a badger and the state of Wisconsin.



In the background of the 10½ p stamp, you see Badger from “The Wind in the Willows.” This is an airmail cover from Great Britain.

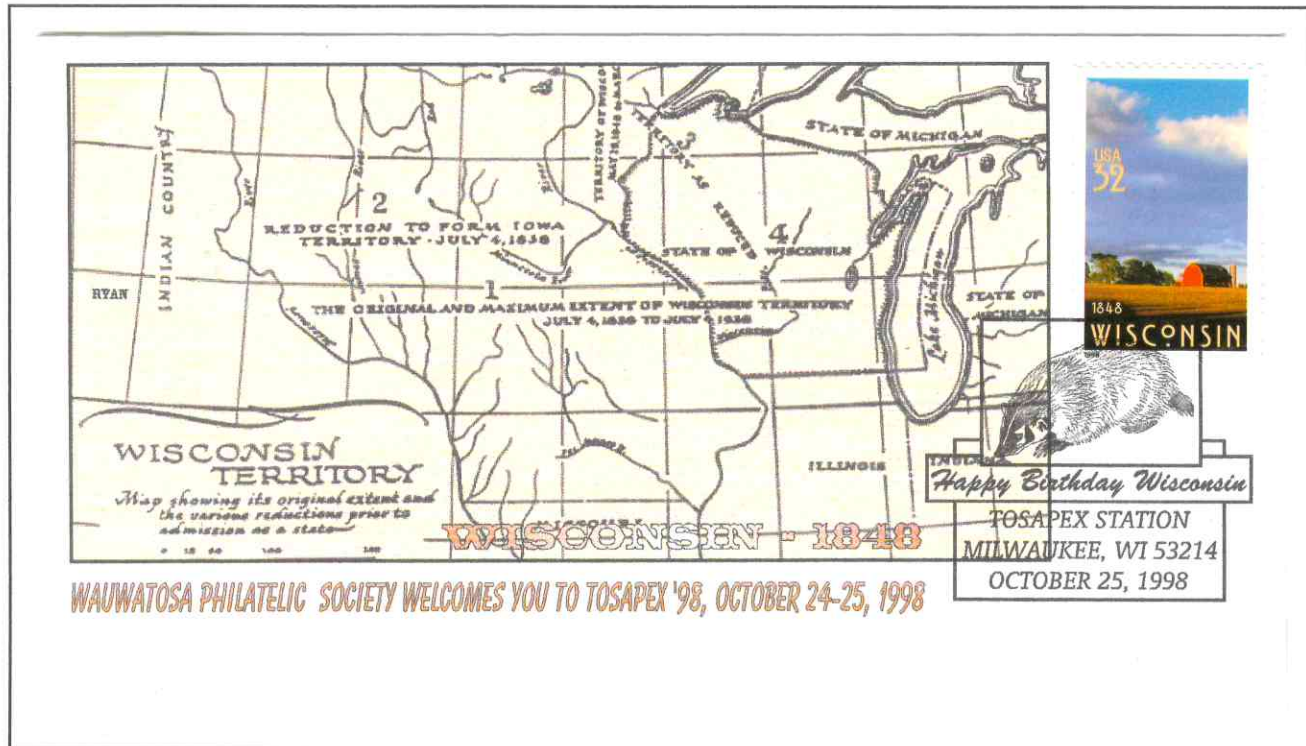
# On, Wisconsin

## 2.1 Animal

The Wisconsin Sesquicentennial stamp on these two covers has a hidden picture of a badger. You can see it if you use a stamp decoder, from the United States Postal Service.



Badger Cancellation



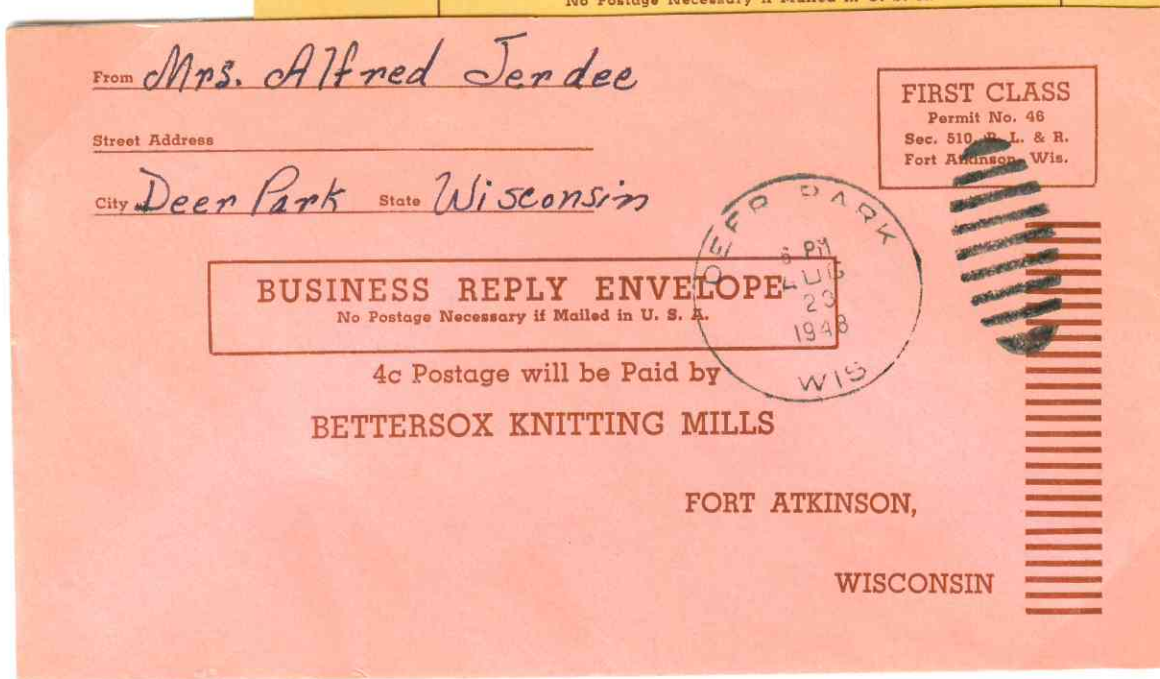
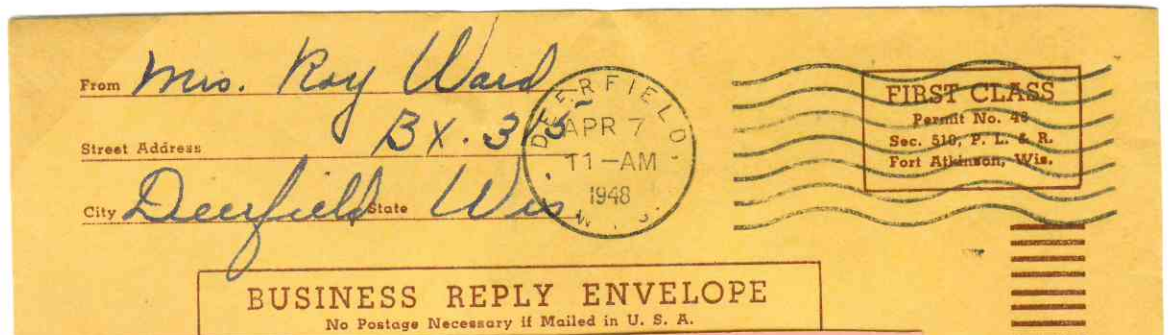
Show cover with a pictorial cancellation showing a badger and a cachet showing a map of the original Wisconsin Territory.

# On, Wisconsin

## 2.2 Wildlife Animal

Wisconsin was the first state to adopt the white-tailed deer as its official state wildlife animal. The white-tailed deer was adopted on June 2, 1957. Hunters like it because its good for hunting. Other people think they are cute because of the movie "Bambi".

It was adopted at the same time as the badger as part of a deal.

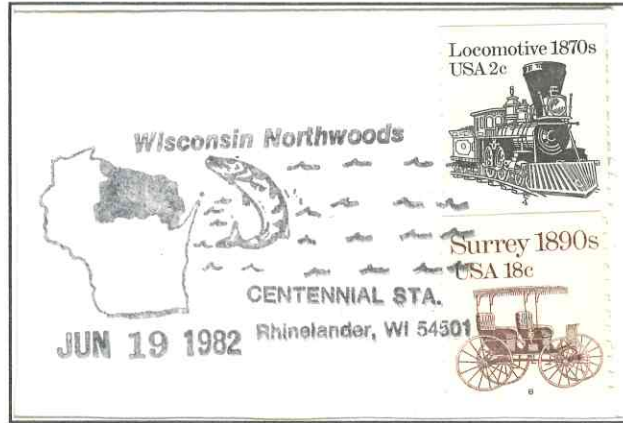


Business reply envelopes with cancellations from Deerfield and Deer Park, Wisconsin.

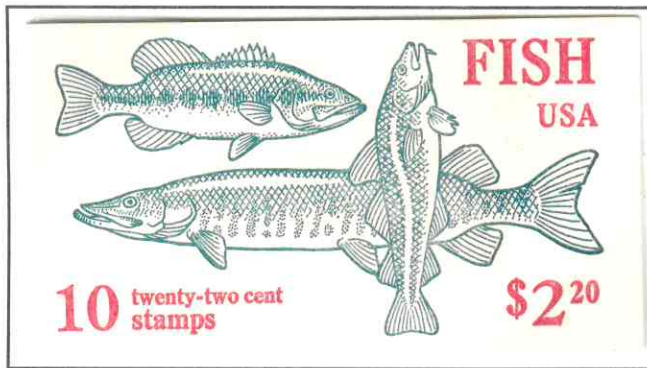
# On, Wisconsin

## 2.3 Fish

The muskellunge (*Masquinongy masquinongy*) was named the state fish on March 30, 1955. Wisconsin was the second state to adopt a state fish. Seven of the ten largest muskies caught since 1935 were caught in Wisconsin's waters.



**Pictorial Cancellation**



**Booklet Cover**

## 2.4 Dog

The American water spaniel is the official state dog. It was adopted in 1985 as a result of a New London eighth grade project. The water spaniel is the only dog breed native to Wisconsin.



**Booklet Pane  
Muskie at top**

# On, Wisconsin

## 2.5 Insect

The honeybee is Wisconsin's state insect. A class in Marinette, Wisconsin read about state insects in their Weekly Readers. They decided to make an insect campaign. They succeeded and Wisconsin's official insect was adopted in 1977.

People like the honeybee because it gives us sweet honey and is hardworking.



Pictorial cancellation showing a honeybee.



Postal stationery with an embossed honeybee.

# On, Wisconsin

## 2.6 Bird

Wisconsin's state bird is the robin. In 1926, schoolchildren in Wisconsin voted for the robin as their state bird. It was not official until June 4, 1949 when the state legislature voted for it.

The children chose the robin because it was a sign of spring.



Se-tenant block of four showing the European robin and other birds

There are two types of robins, the North American robin and the European robin. The North American robin was called the robin by the settlers because the bird reminded them of the robin from their home in Europe.



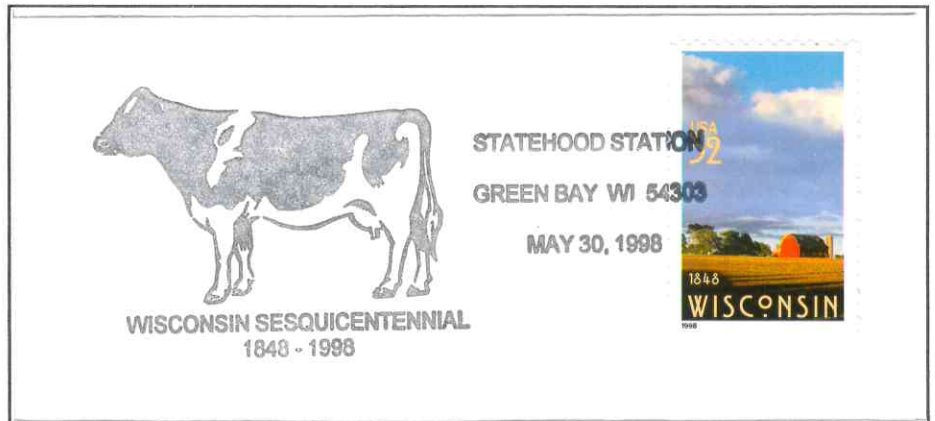
Ship cancellation from U.S.S. Robin.



# On, Wisconsin

## 2.7 Domestic Animal

Dairy cows are important because Wisconsin farms produce a lot of milk. That is why our state is called "The Dairy State." To recognize how important dairy cattle are to the state the legislature named the dairy cow as the official state domestic animal in 1971.



Pictorial cancellation showing a dairy cow.

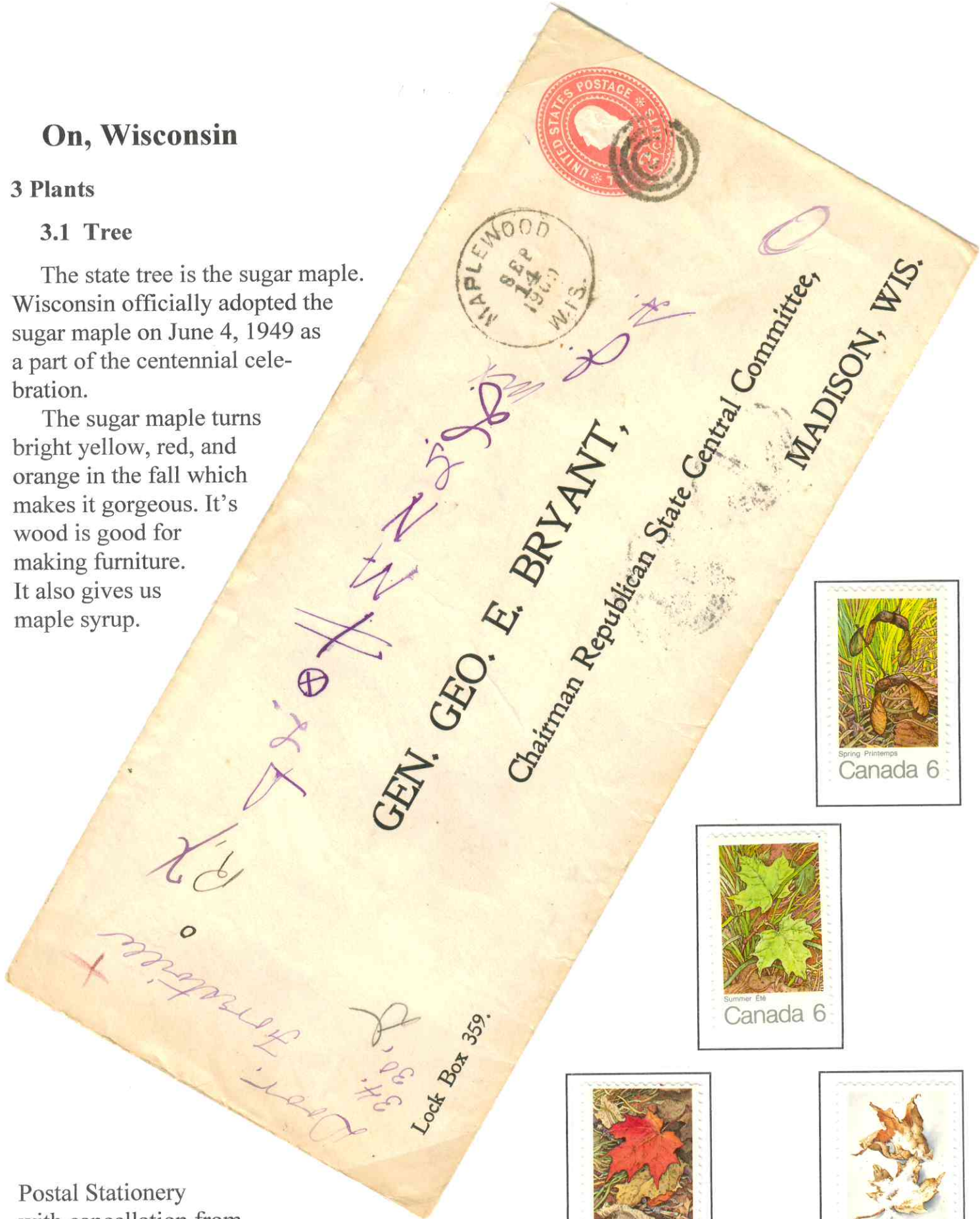
# On, Wisconsin

## 3 Plants

### 3.1 Tree

The state tree is the sugar maple. Wisconsin officially adopted the sugar maple on June 4, 1949 as a part of the centennial celebration.

The sugar maple turns bright yellow, red, and orange in the fall which makes it gorgeous. It's wood is good for making furniture. It also gives us maple syrup.



Postal Stationery with cancellation from Maplewood, Wisconsin



# On, Wisconsin

## 3.2 Grain

Our state grain is corn. Corn has been grown in Wisconsin for over 1000 years since the Native Americans started growing it.

People and animals eat the kernels, and corn cobs are used to make nylon fibers and artificial rubber.



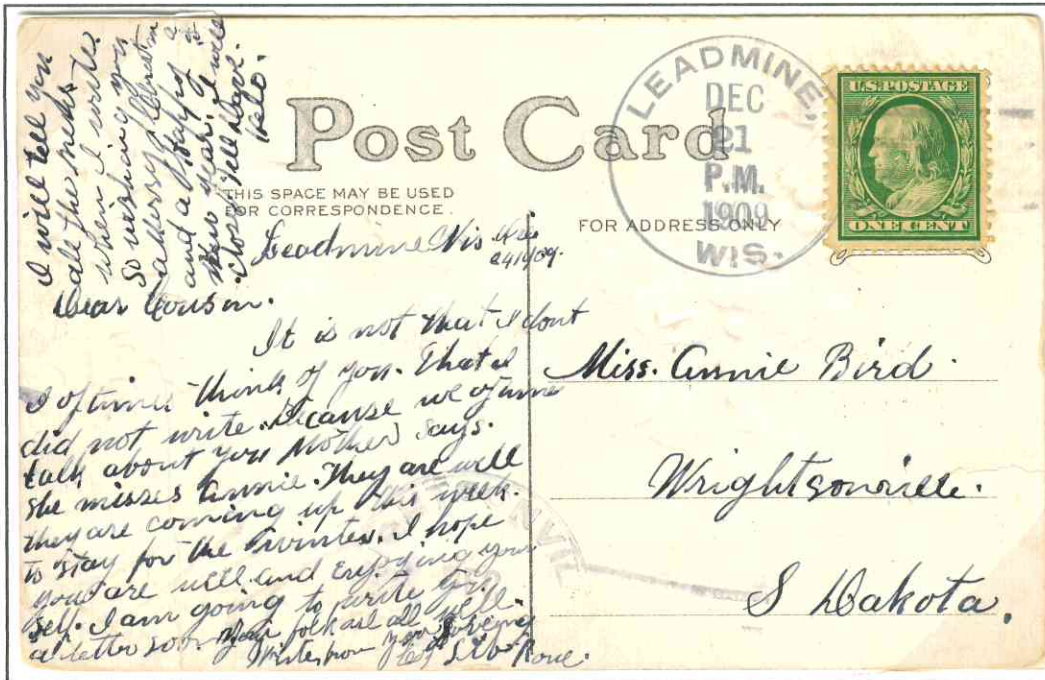
Pictorial cancellation showing an ear of corn.

# On, Wisconsin

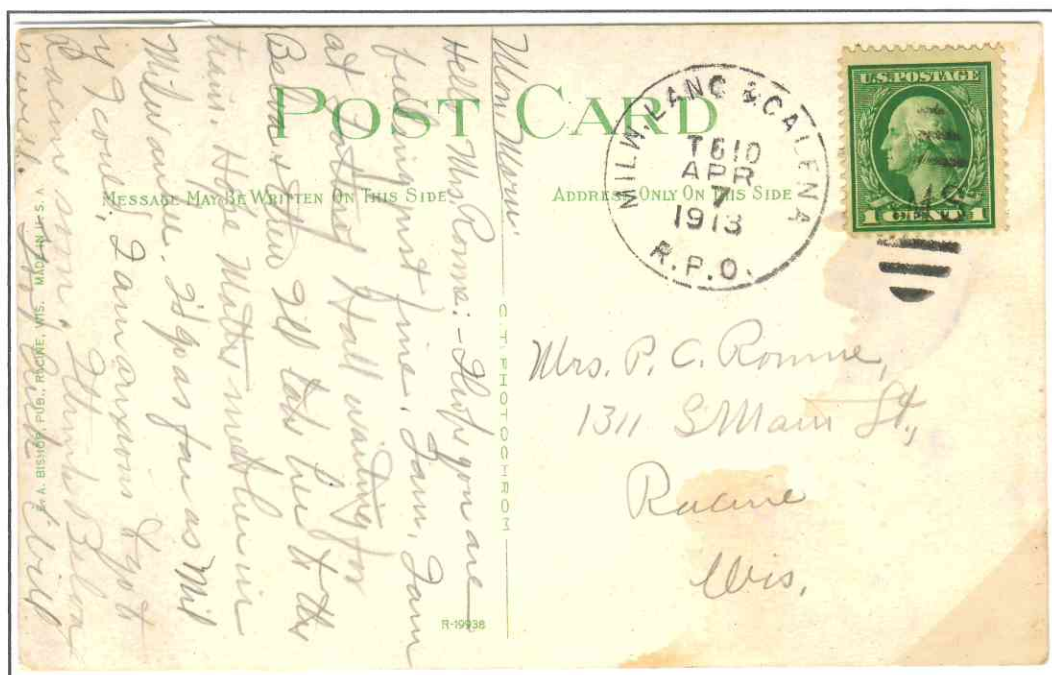
## 4 Rocks and Soils

### 4.1 Mineral

Lots of states chose pretty minerals like diamonds or sapphires. Wisconsin however chose lead (also known as galena), as its official mineral. Lead was used for making paint and bullets. When lead was discovered in Wisconsin in the early 1800's, people came from all over to mine the lead.



Cancellation from Leadmine, Wisconsin.



Milwaukee, Lancaster & Galena Railway Post Office Cancellation

# On, Wisconsin

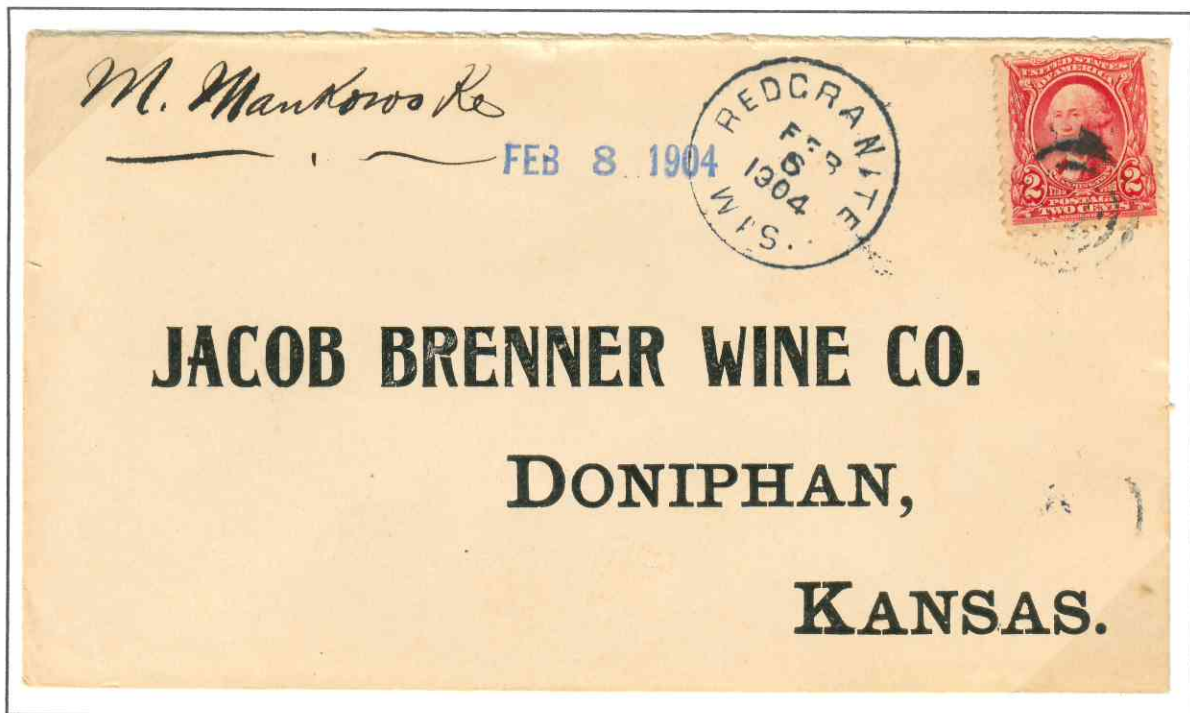
## 4.2 Fossil

Wisconsin's state fossil is the trilobite. Trilobites were around over 300 million years ago, even before the dinosaurs. Trilobite fossils are found throughout the state, except in the north where the glaciers crushed the fossil rocks.



## 4.3 Stone

Red Granite was adopted as the state stone on March 9, 1971. Granite is a hardened form of magma from deep under the earth. It was uncovered by the glaciers and is found throughout Wisconsin.



Cancellation from Red Granite, Wisconsin.

# On, Wisconsin

## 4.4 Soil

The state soil is Antigo silt loam. It is a combination of rocks ground to dust by the glaciers and rotted trees and plants from prehistoric forests.

Antigo silt loam is found mainly in Wisconsin. It was named for the city of Antigo.



# On, Wisconsin

## 5.1 Dance

The polka was adopted as the state dance in 1993. The polka originally was a folk dance from Bohemia. It is a lively couple dance.



Original artwork for Polish Fest 2000 Cancellation



# On, Wisconsin

## 5.2 Beverage

To go along with the dairy cow, Wisconsin chose milk as its official state beverage in 1987. Milk is very heathy for our bones. It can be used for making cream, butter, yogurt, cheese, and ice cream.

The Crown Cork and Seal Company  
Eastern Ave. and Kresson St.  
BALTIMORE, MD.  
Return if not delivered in 5 days.

Attn: Mr. E. S. McConnell

Anacosta Wire & Cable Co.,  
Hastings-On-Hudson,  
New York



Meter showing a bottle of milk



Pictorial cancellation showing milk cans used to take milk from the farm to the dairy