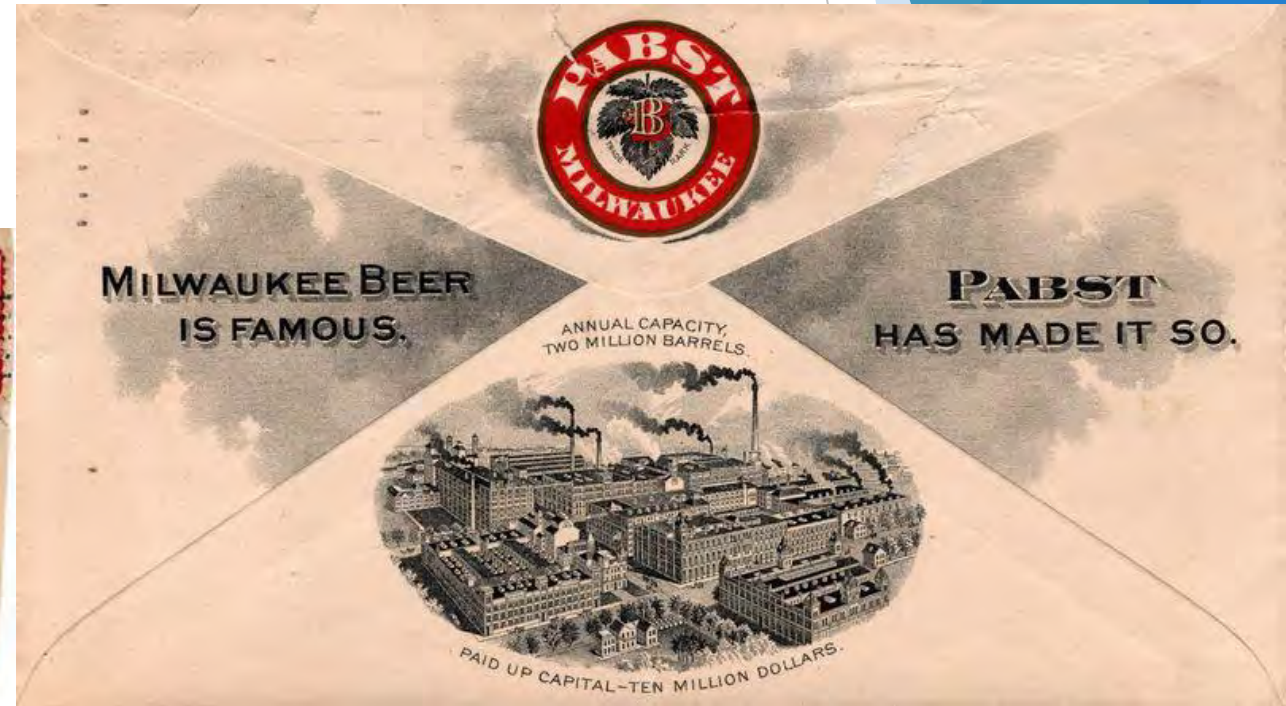


POSTAL HISTORY

Postal history involves how mail is processed and moved, the innovations introduced over the years to speed up its journey, and the people who made it all happen. People literally risked their lives working as rail postal clerks or airmail pilots to speed the mail along. If you are looking for drama - and even comedy - in philately, postal history is where it's at.

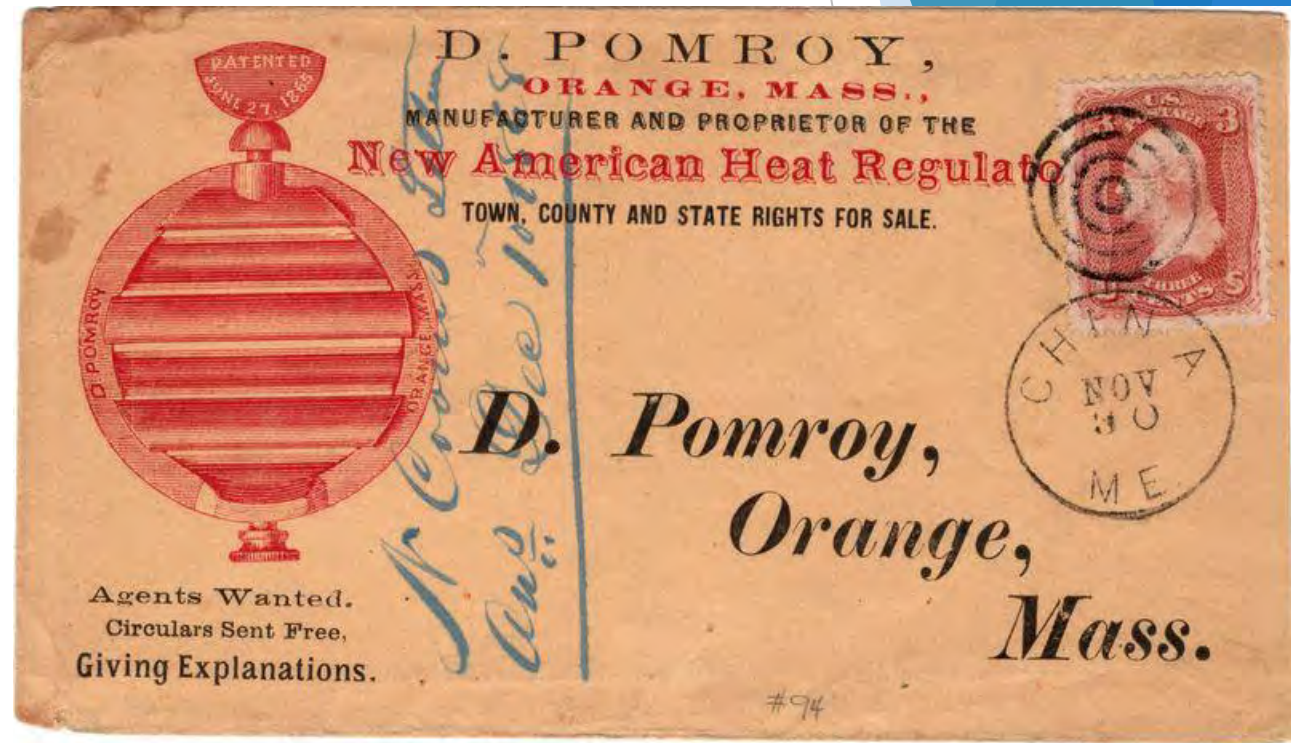
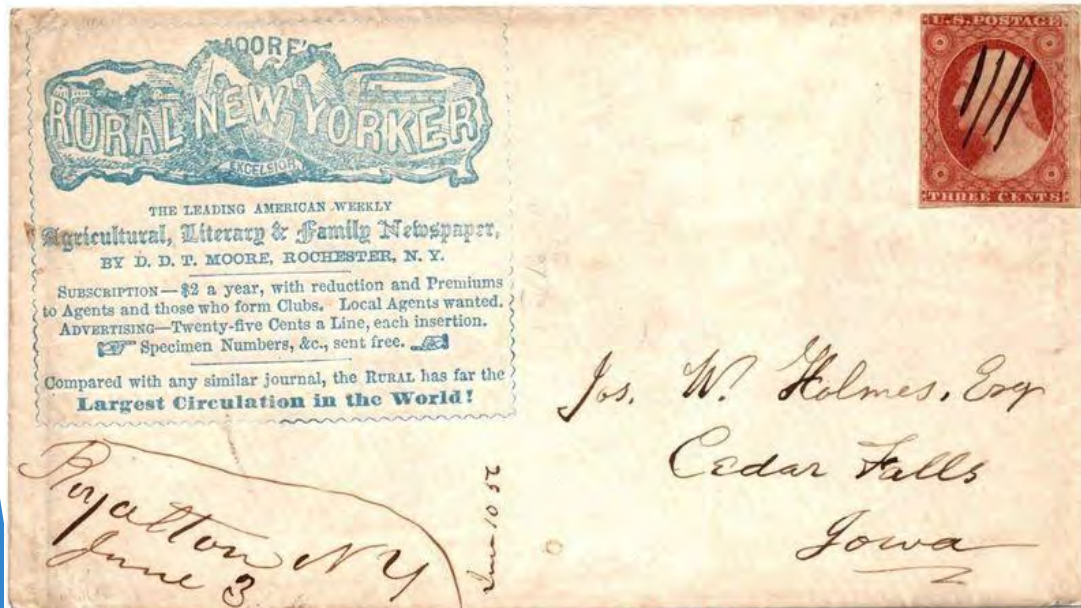
The following slides show examples of different categories of postal history items. The topic has no limits or boundaries and great stories can be told with a collection - and many covers are inexpensive. Start your collection today!

Advertising Cover - an envelope that includes printed advertising for a business, product or service.



Cancel - a way to prevent re-use of a stamp.
These can be done by machine or by hand
and include varieties such as fancy cancels
and pre-cancels.

Manuscript cancel (a cancellation done by hand)

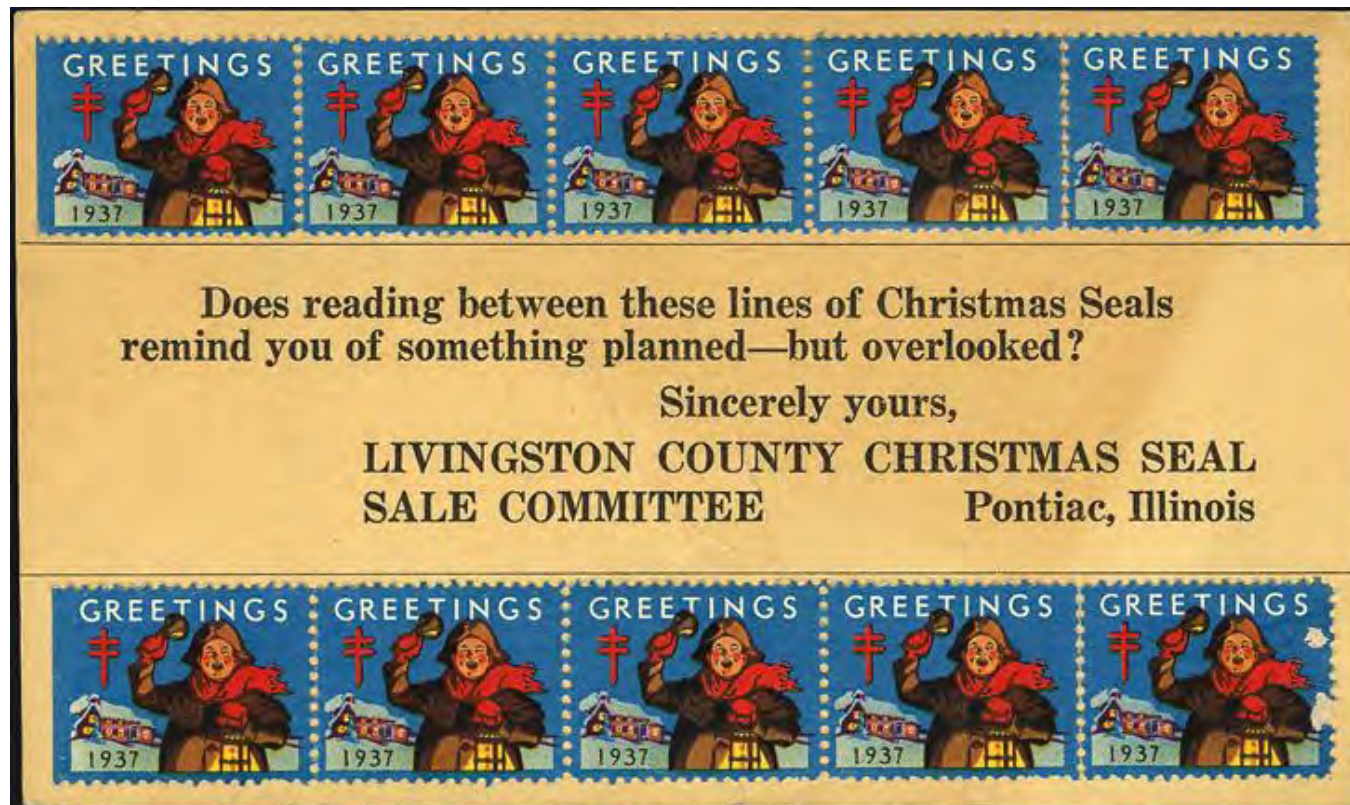


Fancy cancel (a cancel with an artistic design) - bullseye style

Crash Mail - mail that was recovered from accidents like plane crashes, train wrecks or shipwrecks. This is an envelope from a 1929 plane crash.



Cinderella - a stamp-like item that was not issued as official postage. These labels were often for advertising, fundraising or souvenirs. Christmas seals are well-known examples.



Cinderellas got their name because they were often considered unwanted by traditional collectors, but are now recognized for their beauty and unique place in social history.

Event Cover - a mailing that commemorates an event, such as the 1969 Apollo 11 moon landing shown here.



Famous People - a notable person sent or received the item (such as this envelope addressed to John Jacob Astor).



First Day Cover - an envelope or postcard with a postage stamp that has been canceled on its first day of postal use. It also typically includes a special postmark from the city of issue and a cachet, which is an artistic image or design related to the stamp.



Mourning Cover - black-edged posted letters used in most countries, especially during the 19th and early 20th centuries, as harbingers of death and messengers of grief.

A 1923 mourning cover. The purchaser of the cover found a note inside with a calling card and was able to track the probable deceased person who died in Vermont the month prior.



Patriotic Cover - served as a way for citizens to display their loyalty and rally support for a cause, such as this Union Civil War cover.



Private Carriers - valued for the story they tell about the early days of mail delivery, these envelopes (or packages) were delivered by private companies, who often competed with or supplemented official government mail systems.

1865 Wells Fargo cover



Rate Paid - postal items that clearly show the stamps or postal markings used to pay the required rate at a specific time.

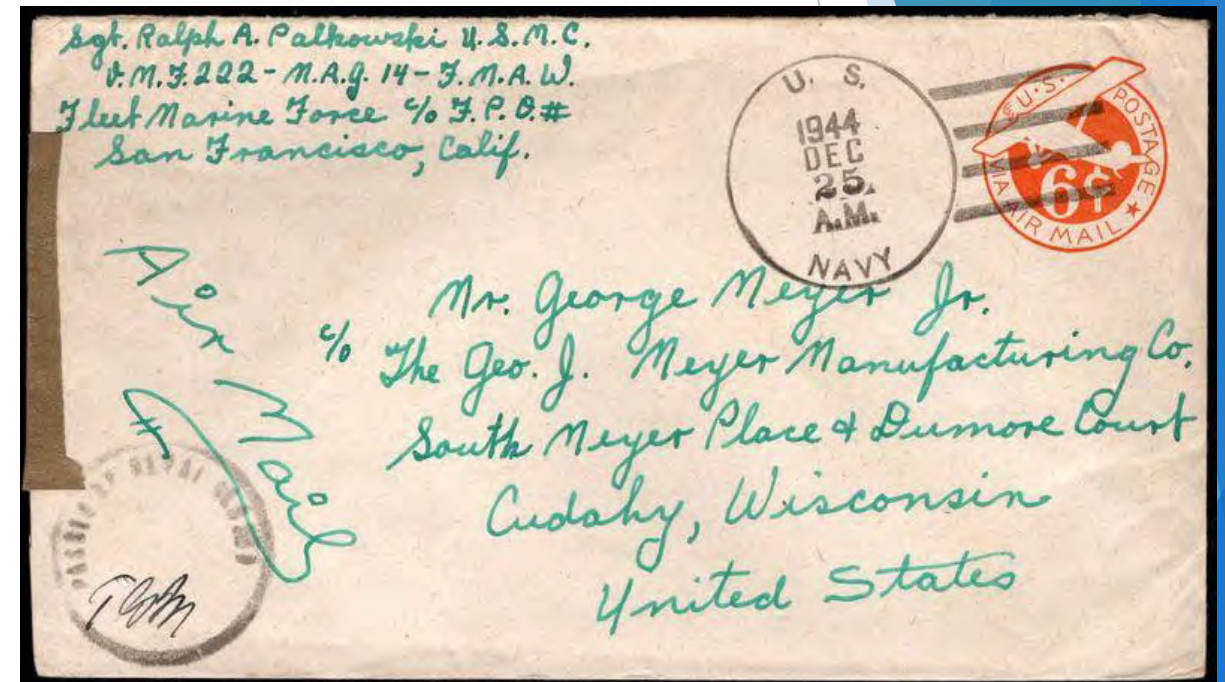
1833 Wisconsin stampless
25 cent rate



Routes - focuses on how mail was transported over time, often under challenging or in unusual circumstances.

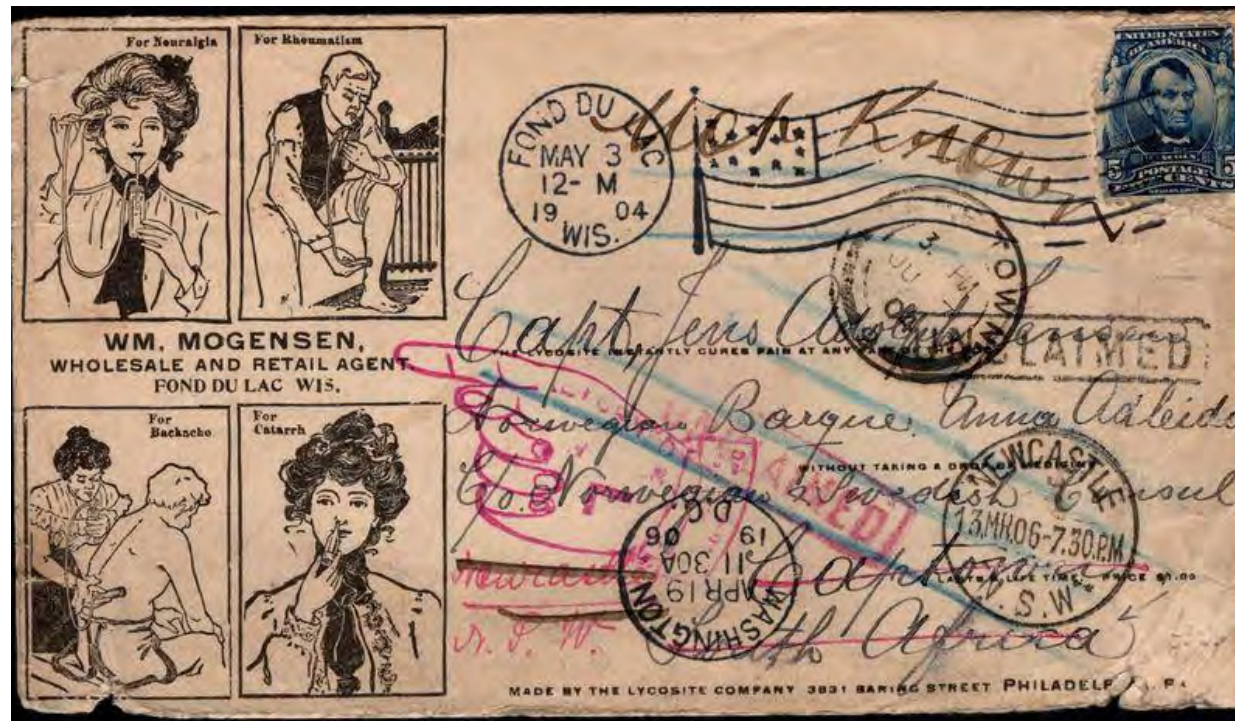
Start, Stop and End Points

- 1 Nissan Island
- 2 Brisbane
- 3 Nouméa
- 4 Suva
- 5 Canton Island
- 6 Palmyra Atoll
- 7 Honolulu
- 8 San Francisco
- 9 Minneapolis
- 10 Milwaukee
- 1-2: Marine SCAT
- 2-8: NATS
- 8-10: NWA



Xmas Day Cover from South Pacific
1944 and the route it traveled to
get to Cudahy

Services - mail service such as forwarded, returned to sender or registered mail. This cover appears to have been forwarded but then returned to sender...



Stamped Envelope - an envelope with a pre-printed or embossed design, known as an indicium or imprinted stamp, that indicates the postage was prepaid.



This envelope is also considered an advertising cover.

Transport Mode - focuses on how mail was transported over time - note the 'tin can' envelope on the right!



Left - airship mail, right - tin can mail (mail in a sealed tin can from an island in Tonga was delivered to passing ships by canoe)

Resources for collecting in general...

- Join a local stamp club!
 - Milwaukee Philatelic Society
(<https://milwaukeephilatelic.org/>)
 - Waukesha County Philatelic Society
(<https://www.wfscstamps.org/Clubs/Waukesha.shtml>)
 - Wauwatosa Philatelic Society
(<https://wfscstamps.org/Clubs/Wauwatosa.shtml>)
 - American Topical Association (Chapter 5 is the Milwaukee club)
(<https://www.wfscstamps.org/Clubs/ATAchap5.shtml>)
- National organizations:
 - American Philatelic Society (APS) (<https://stamps.org/>)
 - American Air Mail Society (AAMS)
(<https://www.americanairmailociety.org/>)

Resources for postal history...

- Attend a stamp show (find shows via the clubs listed on the previous slide or the Wisconsin Federation of Stamp Clubs at wfscstamps.org)
- Find a local dealer by searching online
- Ebay, Hipstamp and other online retailers offer items, but due diligence is recommended!
- Check out these resources for postal history groups:
 - Wisconsin Postal History Society
(<https://wfscstamps.org/Clubs/WisconsinPostalHistory/>)
 - Illinois Postal History Society
(<https://sites.google.com/view/iphs/welcome>)
 - Mourning Stamps and Covers Club (<http://mscc.ms/>)
 - Military Postal History Society (<https://militaryphs.org/blog/>)
 - International Machine Cancel Society (<http://www.machinecancel.org/>)
 - Postal History Society of Canada
(<https://www.postalhistorycanada.net/php/index.php>)
 - U.S. Philatelic Classics Society (<https://www.uspcs.org/>)

Resources for postal history (continued)...

- Watch this video presentation by Gary Wayne Loew on the Milcopex website: [Mastering Postal History: How to Read and Interpret a Cover](#)
- Watch videos on a variety of topics including postal history on the APS website - recent episodes include 'Shaping the World Through Mail' and 'Lessons from Postal History: Mental Health and Prisoners of War'
<https://stamps.org/learn/educator-resources/stamp-chats>