

HOW TO TAKE OVER THE WORLD THROUGH PHILATELY

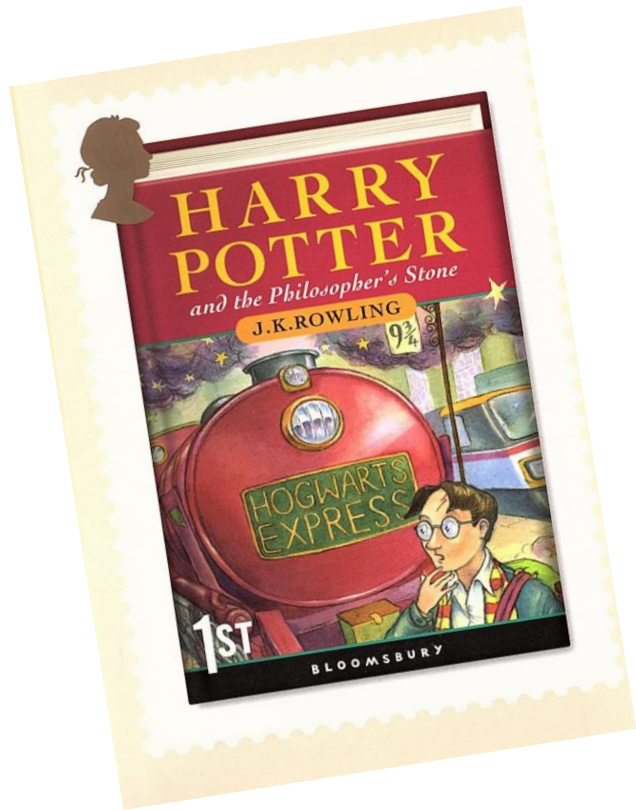
Van Siegling

Professor of Muggle Mail, Hogwarts

Magic users, Palmistry and Sorcerers, Inc.

September 18th, 2022

The Magical World of Harry Potter - Thematics



Van Siegling

Milwaukee Philatelic Society, Inc.

Milcopex 2022

September 18th, 2022

PROGRAM

- How it all began.
- Where is it going?
- What is the Difference between Thematics and Topicals?
- What is the Difference between Collecting and Exhibiting?
- Printers and Publishing Software.
- The First Page, the Last Page *and* the Golden Thread.
- Creativity

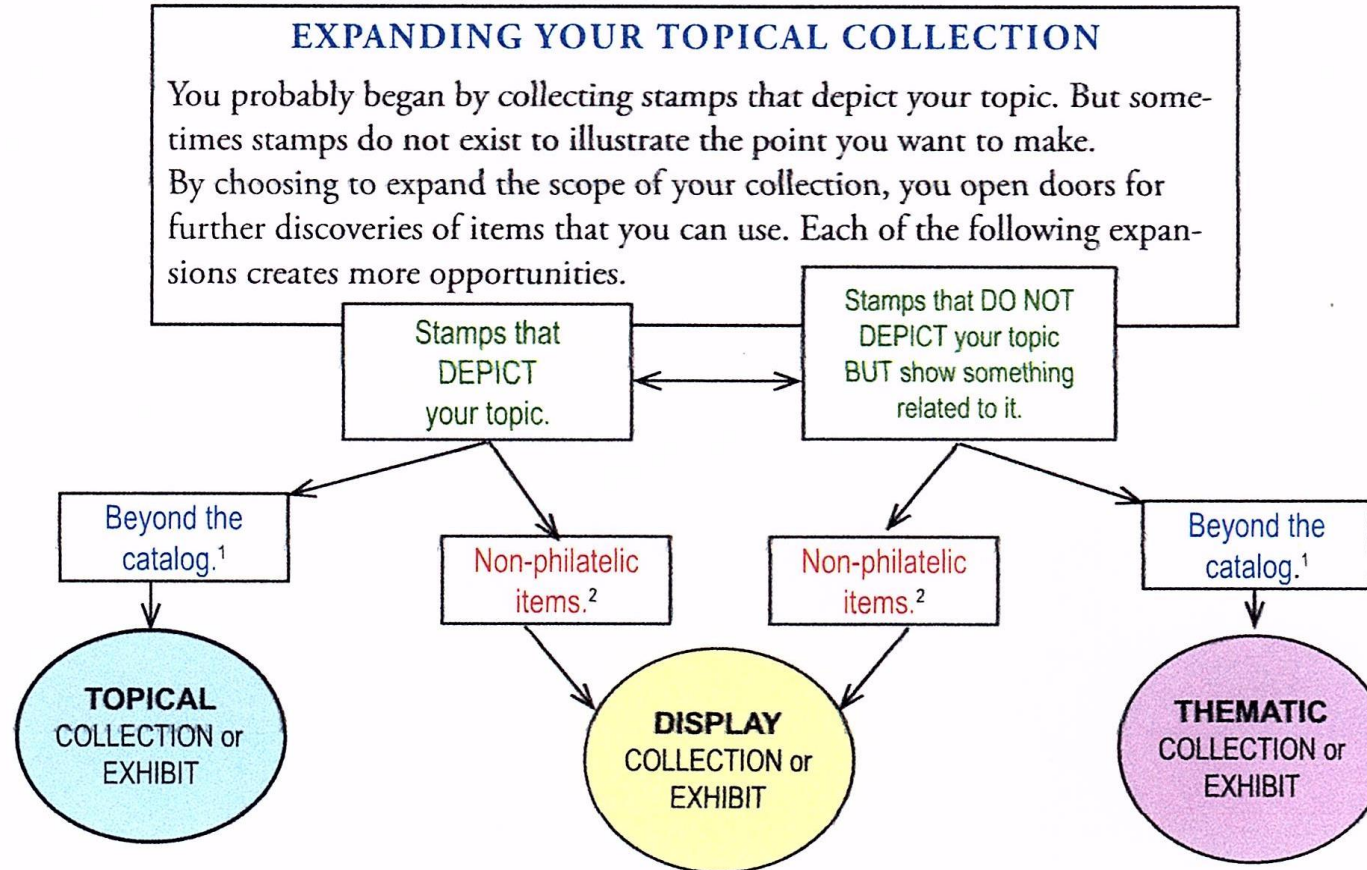
Nancy Clark!!!



SPAGETTI FLOW CHART

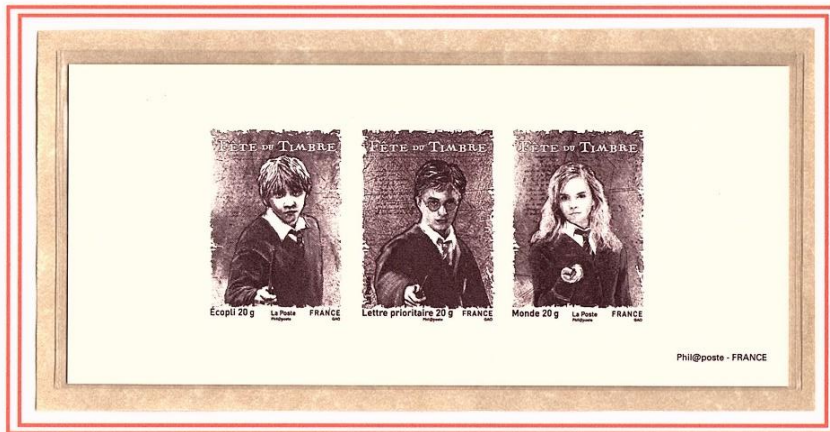


Is it Topical or is it Thematic?



1. "Beyond the Catalog" (BTC) items include: booklets, meter stamps, postal stationery and postmarks. Other items you can add include covers, first-day covers and maximum cards.

2. Non-philatelic items include related memorabilia such as:
coins, cards, cinderellas, medals, picture post cards, photos, programs, tickets, etc., pertinent to your collection.



Single color proof of French issue

This exhibit examines the modern world of young wizards and witches created by J.K. Rowling as described in the original seven books and eight movies. It does not include information available exclusively in the three e-books, in the “Harry Potter and the Cursed Child” play or in the “Fantastic Beasts and Where to Find Them” movie.

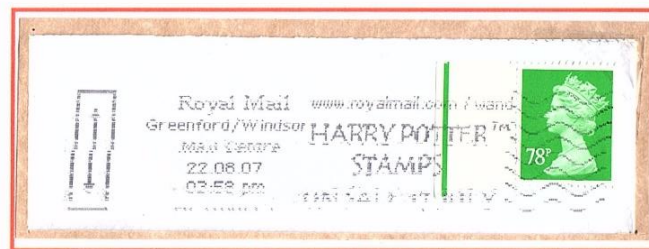
This exhibit tells “the story about a story.” The seven Harry Potter books are packed with fascinating details that can not be discovered with just one reading. Ms Rowling developed literally hundreds of names for characters, places, spells, books, beasts, potion ingredients and magical items. Read on to discover the source of many of the names that she used. She gave a magical twist to many common items. If you did not understand the proper British name, then look here! You might find what she was writing about. Ms Rowling derived some of the plot lines from classical literature. This exhibit examines those possibilities. Besides the legitimate Harry Potter issues, you will see cancels, meters, proofs, specimens, covers and other stamps to flesh out the Harry Potter story.

This exhibit uses three different colors of backing paper for the philatelic material. Non-Harry Potter items are mounted on ivory granite paper and have a tan border. Bogus issues (printed to defraud collectors) are mounted on grey paper and are surrounded by a grey border. Legitimate Harry Potter material is naturally mounted on copper parchment and has a copper border. (For magic to work, it cannot be written on paper, only parchment.) Double borders surround items that are philatelically important.

An owl designates that much effort and research went into this part of the exhibit. There are only a few.

Wands at the ready! It is time to enter the magical world of **Harry Potter!**

The Magical World of Harry Potter



Royal Mail spray cancellation advertising the sale of Harry Potter stamps.

78 pence Airmail/Zone 1 Overseas to U.S. Letter to 20g. Apr 2, 2007 to Apr 6, 2008



An Post (Irish Postal Service) also used a similar spray cancellation system. This cancel advertised the release of the second movie, *Harry Potter and the Chamber of Secrets*.

41 cents Priority Mail to Great Britain. Rate lasted until Jan 5, 2003.

Exhibit Plan

Title, Introduction, Plan

- 1 Characters
 - 1.1 Main Characters
 - 1.2 Harry's Family
 - 1.3 Hogwarts Students
 - 1.4 Hogwarts Faculty and Staff
 - 1.5 Other Characters
- 2 Wizard Pastimes
 - 2.1 Wizard Games
 - 2.2 Broomsticks
 - 2.3 Quidditch
- 3 Wands
- 4 Spells
 - 4.1 Spells
 - 4.2 Patronus
 - 4.3 Animagi
- 5 Magical Creatures, Beasts...and Dragons
- 6 Locations
 - 6.1 Diagon Alley
 - 6.2 Knockturn Alley
 - 6.3 Hogwarts and Environs
 - 6.4 Hogsmeade
 - 6.5 In the book and the movies
- 7 Owl Post and Transportation
- 8 The Plot
 - 8.1 Harry Potter and the Sorcerer's Stone
 - 8.1.1 School Supplies
 - 8.1.2 Lessons Learned
 - 8.1.3 Plot Points
 - 8.1.4 Saving the Sorcerer's Stone
 - 8.2 Harry Potter and the Chamber of Secrets
 - 8.2.1 Lessons learned
 - 8.2.2 Plot Points
 - 8.3 Harry Potter and the Prisoner of Azkaban
 - 8.3.1 Lessons Learned
 - 8.3.2 Plot Points
 - 8.4 Harry Potter and the Goblet of Fire
 - 8.4.1 Lessons Learned
 - 8.4.2 Plot Points
 - 8.4.3 The Tri-wizard Tournament
 - 8.5 Harry Potter and the Order of the Phoenix
 - 8.5.1 Lessons Learned
 - 8.5.2 Plot Points
 - 8.6 Harry Potter and the Half-Blood Prince
 - 8.6.1 Lessons Learned
 - 8.6.2 Plot Points
 - 8.7 Harry Potter and the Deadly Hallows
 - 8.7.1 Horcruxes
 - 8.7.2 Plot Points
 - 8.7.3 Conclusion

The Exhibit Plan

Title, Introduction, Plan

- 1 Characters
 - 1.1 Main Characters
 - 1.2 Harry's Family
 - 1.3 Hogwarts Students
 - 1.4 Hogwarts Faculty and Staff
 - 1.5 Other Characters
- 2 Wizard Pastimes
 - 2.1 Wizard Games
 - 2.2 Broomsticks
 - 2.3 Quidditch
- 3 Wands
- 4 Spells
 - 4.1 Spells
 - 4.2 Patronus
 - 4.3 Animagi
- 5 Magical Creatures, Beasts...and Dragons
- 6 Locations
 - 6.1 Diagon Alley
 - 6.2 Knockturn Alley
 - 6.3 Hogwarts and Environs
 - 6.4 Hogsmeade
 - 6.5 In the book and the movies
- 7 Owl Post and Transportation

8 The Plot

- 8.1 Harry Potter and the Sorcerer's Stone
 - 8.1.1 School Supplies
 - 8.1.2 Lessons Learned
 - 8.1.3 Plot Points
 - 8.1.4 Saving the Sorcerer's Stone
- 8.2 Harry Potter and the Chamber of Secrets
 - 8.2.1 Lessons learned
 - 8.2.2 Plot Points
- 8.3 Harry Potter and the Prisoner of Azkaban
 - 8.3.1 Lessons Learned
 - 8.3.2 Plot Points
- 8.4 Harry Potter and the Goblet of Fire
 - 8.4.1 Lessons Learned
 - 8.4.2 Plot Points
 - 8.4.3 The Tri-wizard Tournament
- 8.5 Harry Potter and the Order of the Phoenix
 - 8.5.1 Lessons Learned
 - 8.5.2 Plot Points
- 8.6 Harry Potter and the Half-Blood Prince
 - 8.6.1 Lessons Learned
 - 8.6.2 Plot Points
- 8.7 Harry Potter and the Deadly Hallows
 - 8.7.1 Horcruxes
 - 8.7.2 Plot Points
 - 8.7.3 Conclusion

Character Names

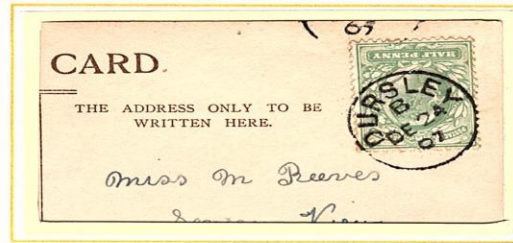
1.2 Harry's Family



40 centimes
French Urgent
Letter Rate
up to 20 g.
Jan 13, 1969 to
Jan 4, 1971



Harry's mother was Lily
Potter. Like the flower, she
is very beautiful.

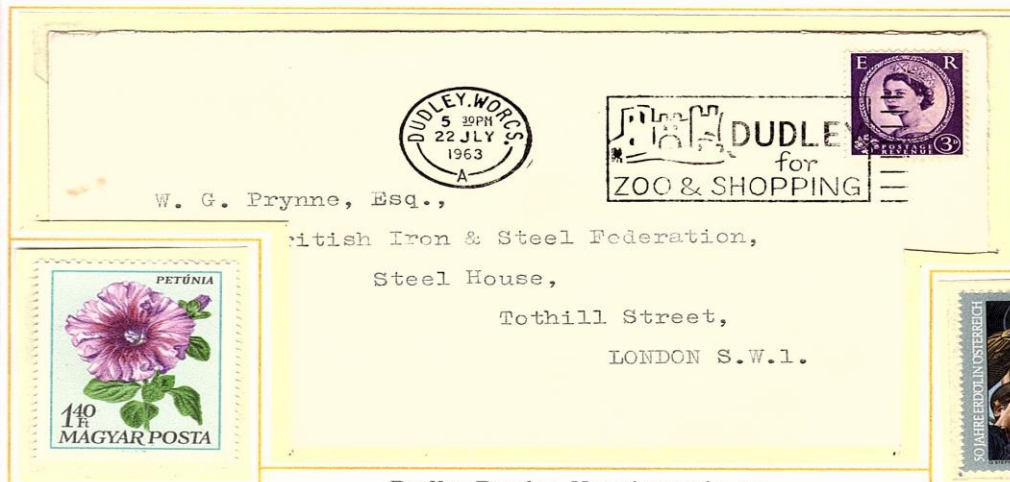


1/2 pence
Inland
(Domestic) Post
Card Rate
Oct 5, 1871 to
Jun 2, 1918



"POTTER" per-
fin used by C&J
Potter wallpaper
manufacturers
(part of The
Wallpaper Mfrs
Ltd.) from 1885
to 1957.

Harry grew up with his aunt, uncle and cousin, the
Dursley's. Ms. Rowling derived the name from the
small town in Gloucestershire, near her birthplace.



3 pence
Inland Surface
Letter Rate
1 oz. or less
Apr 27, 1963 to
May 16, 1965
(continuation
of rate from
Oct 1, 1957)



Dudley Dursley, Harry's cousin, tor-

Show Cancel



Wands, and their Woods

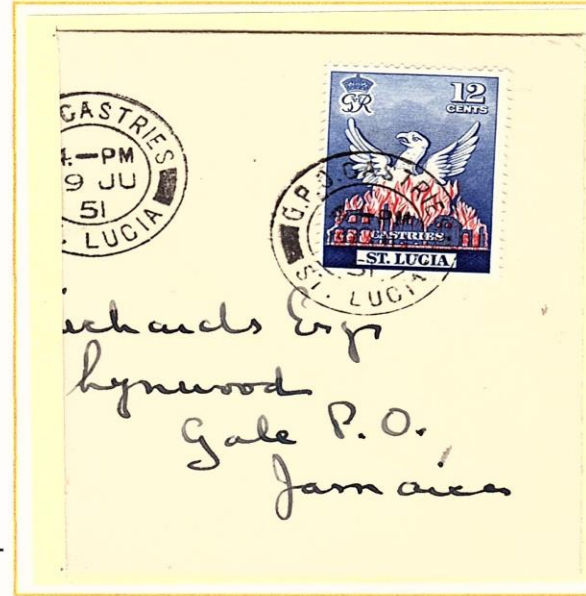
3. Wands

Every witch and wizard has a **magical wand**.
A wand is a wooden shaft with a special core.



Specimen

There was only one wand maker in Great Britain, Mr. Ollivander. He preferred using **dragon** heartstring, **unicorn** hair and **phoenix** tail feathers for the wand core.



Creativity Helps

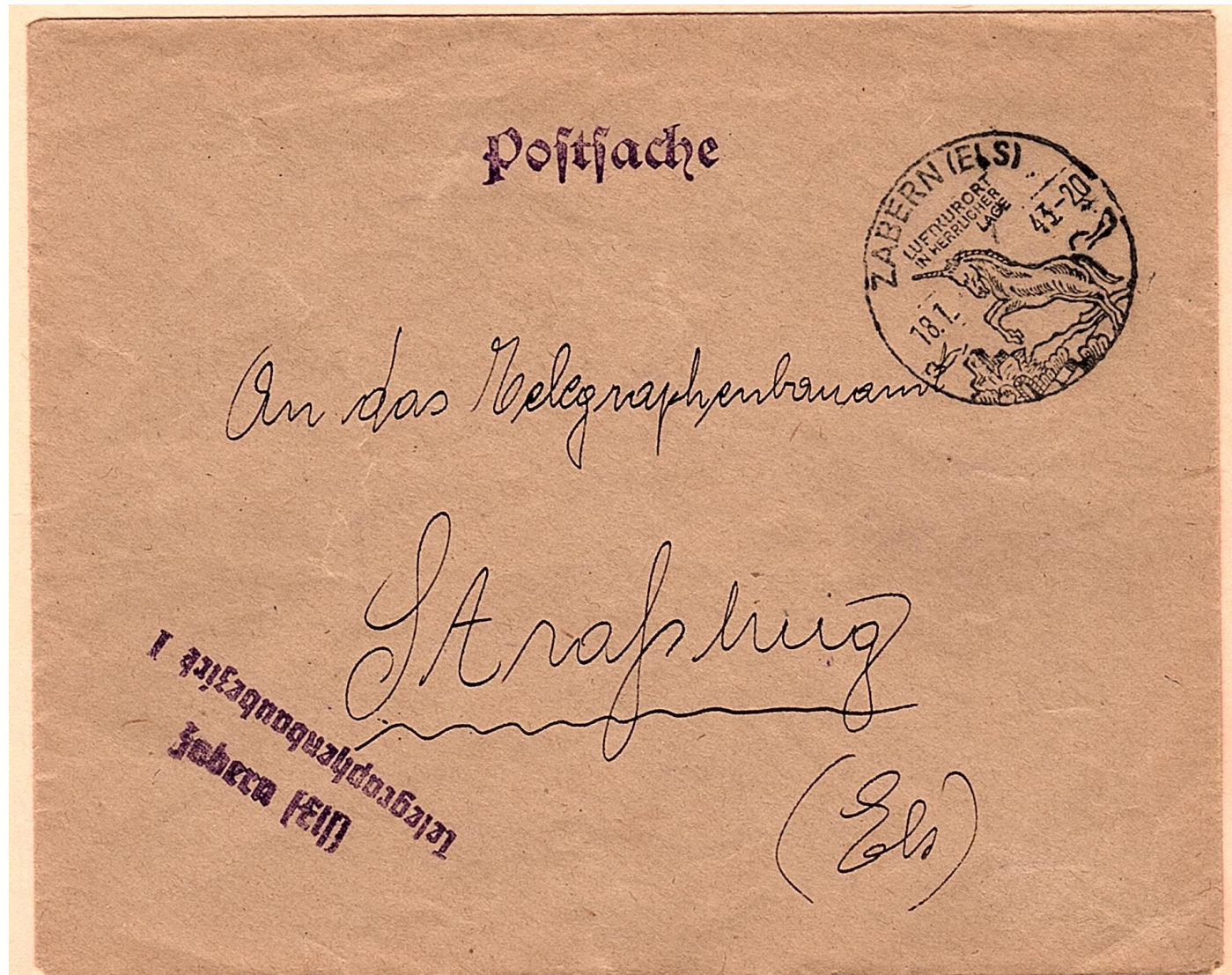


2nd year Transfiguration class
Changed a **pair of White Rabbits**
into a pair of **Slippers**



2nd year Transfiguration class
Changed a **Beetle** into a **Button**

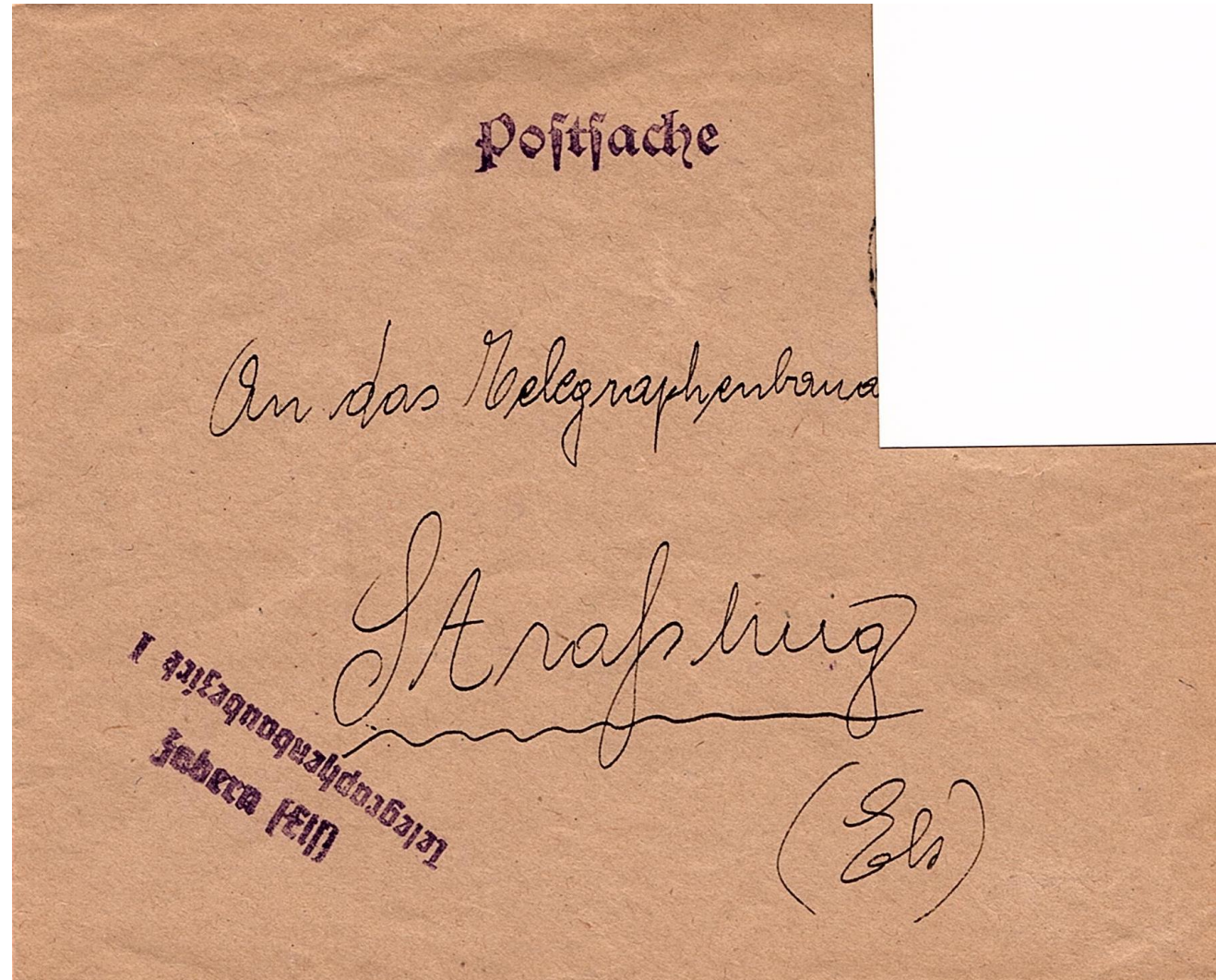
Why is this Important?



Time's Up!!!



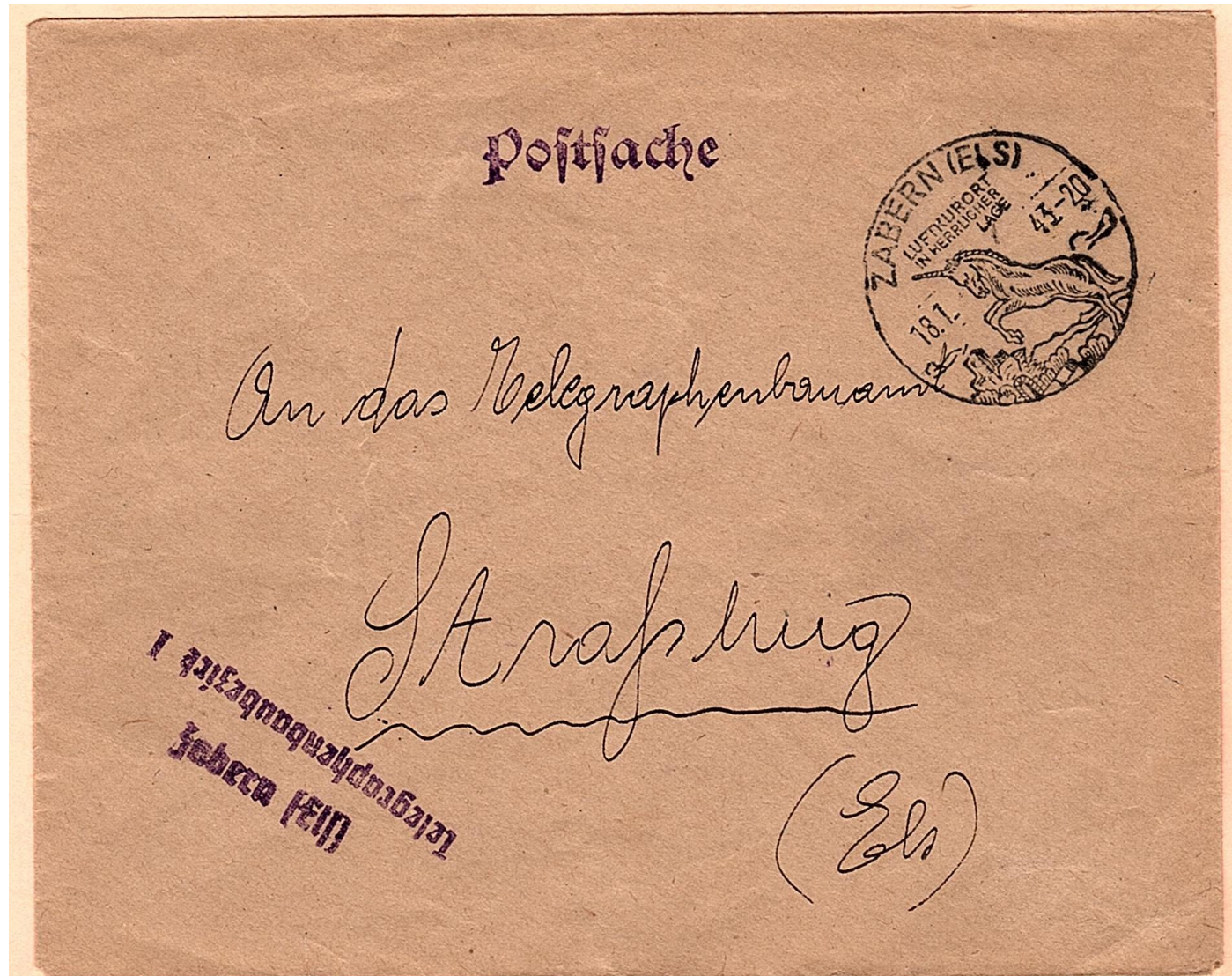
No Postage Stamp?



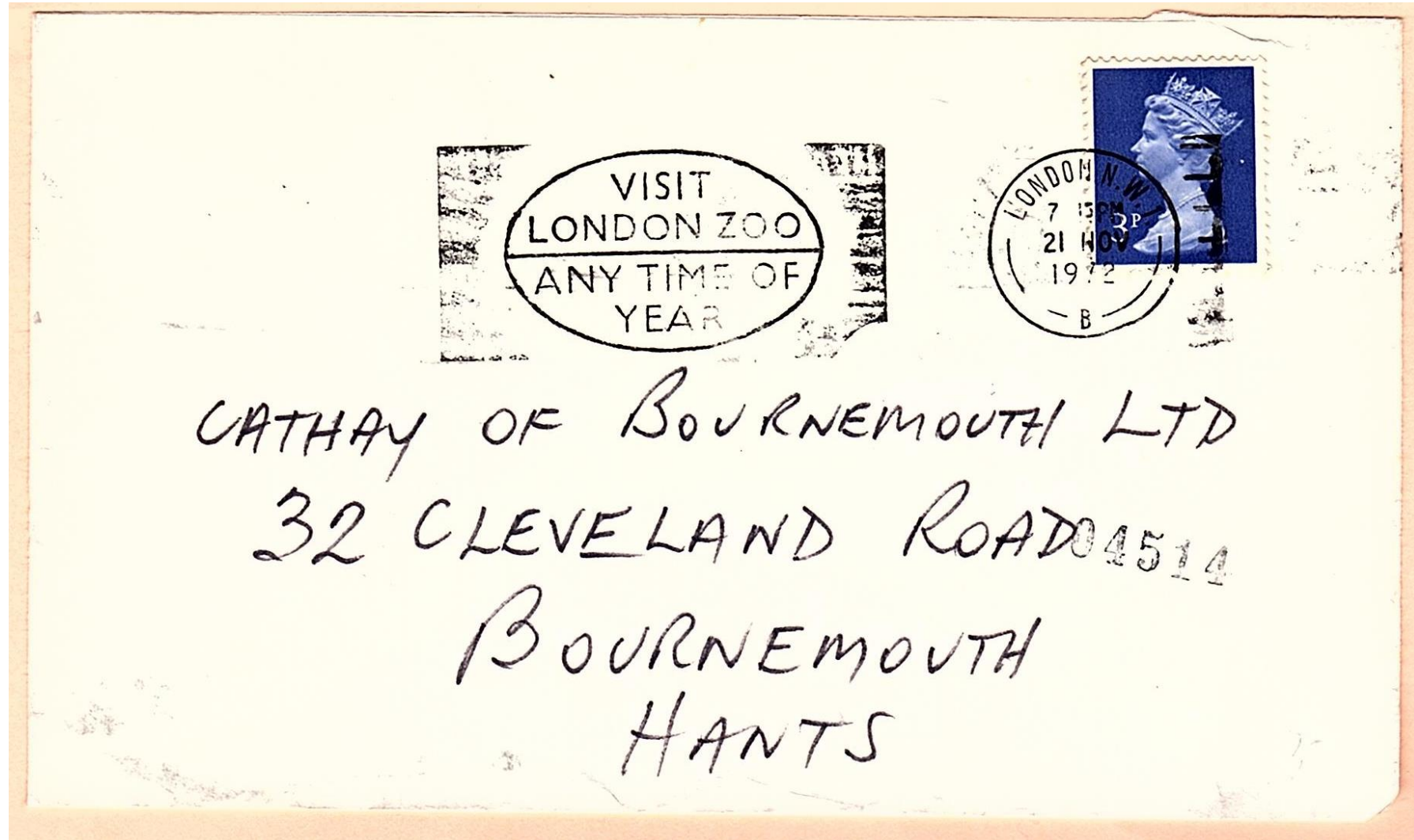
The Unicorn, Of Course!



More Than One Way to Use a Cover



Serendipity Strikes!



Goblins!



Mighty Trees....



....with a Magical Chicago Connection



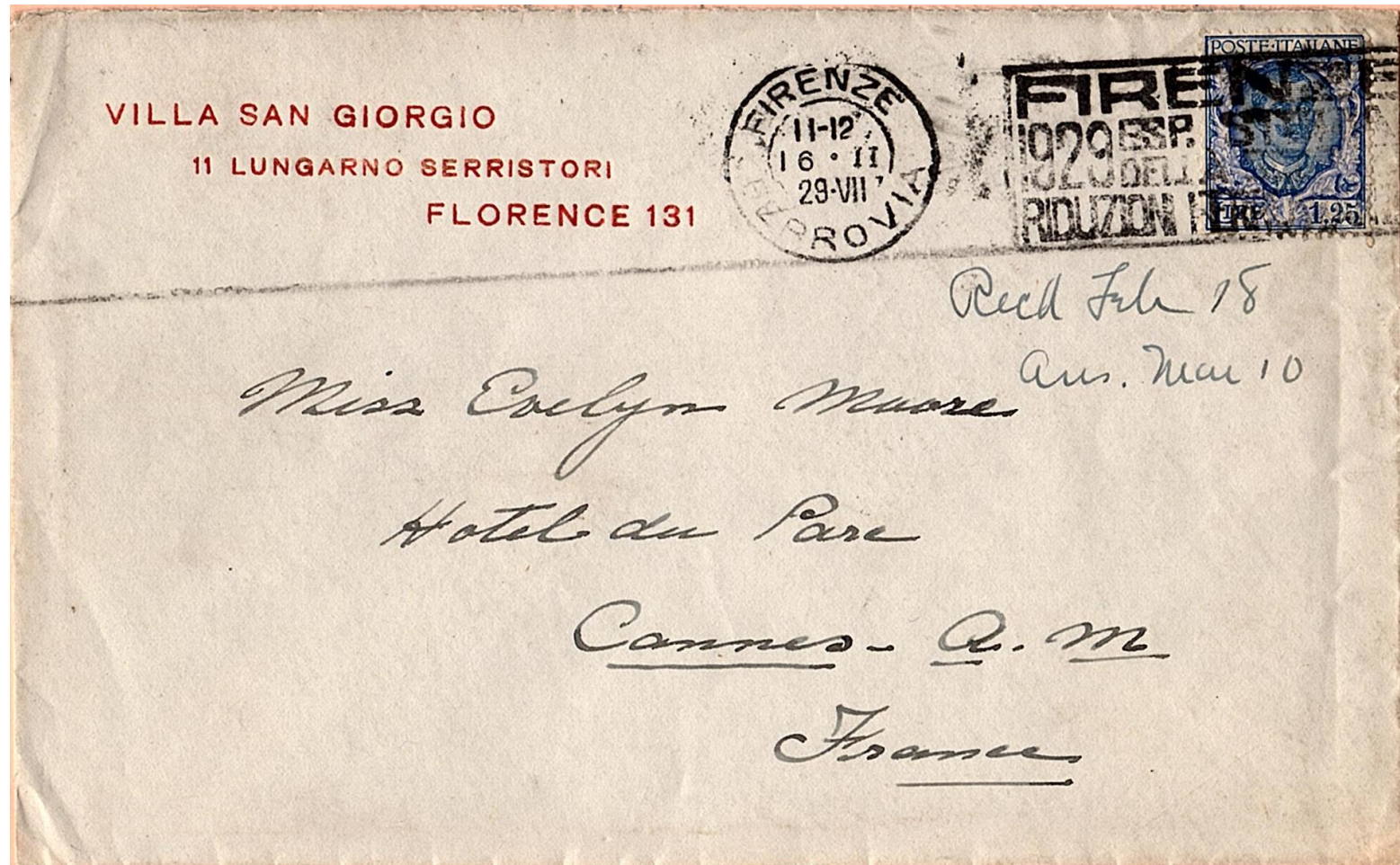
Judges Do Help Exhibitors!



Movement via Animation



Location, Location, Location



Meter Cancel



Maximum Card



Knowledge of Many Subjects



*1 shilling
Underpaid by 3 pence
G.B. International
Airmail Zone "B"
Letter Rate, per 1/2 oz.
of 1/3d
Started May 1, 1952 to
Oct 2, 1966*

The headmistress of Beauxbatons, Madame Maxine, stated that their flying horses drank only **single malt whiskey**.

Internet Find!



Deutsche Post 

FRANKIT 0,55 EUR

18.11.08

4D02001BCB

U.S.P.S. Processing Error



★★★★★
FIRST DAY OF ISSUE
NOVEMBER 11, 2013
WASHINGTON, DC 20066
★★★★★



Medal
of Honor:
World War II

The 7 Potters

8.7.2 Plot Points

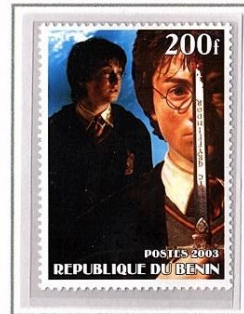
In the seventh book, Lord Voldemort's followers took over the Ministry of Magic; Harry and his friends went into hiding while trying to find and destroy Lord Voldemort's horcruxes. Ron, Hermione and four members of the Order of the Phoenix drank Polyjuice Potion so they would become "imitation" Harry Potters and confuse the Death Eaters trying to find Harry.



Bogus Stamp to Defraud Collectors



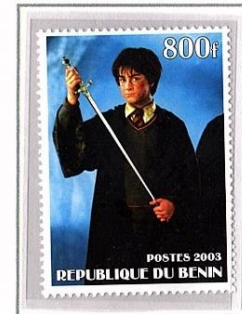
Bogus Mini-Sheet to Defraud Collectors



Bogus Stamp to Defraud Collectors



Genuine Stamp from Albania



Bogus Stamp to Defraud Collectors



Bogus Stamp to Defraud Collectors



Bogus Stamp to Defraud Collectors

A
Teaching
Moment

Questions???