

DULUTH PARK INTERNATIONAL

2641 North Berkeley Lake Road
Duluth, Georgia 30096



Building Highlights:

Site Size:	15.99 Acres
Office Building:	7 Floors, 138,600 Sq. Ft.
Typical Floor Size:	+/-19,732 Sq. Ft.
Parking Ratio:	Up to 5.00/1,000 Sq. Ft.
Site Work:	Paved & Pad Ready
Zoning:	PUD, City of Duluth
Fiber:	+10 GB Available to Site
Power:	Redundancy Available
Utilities:	All Utilities In-Place



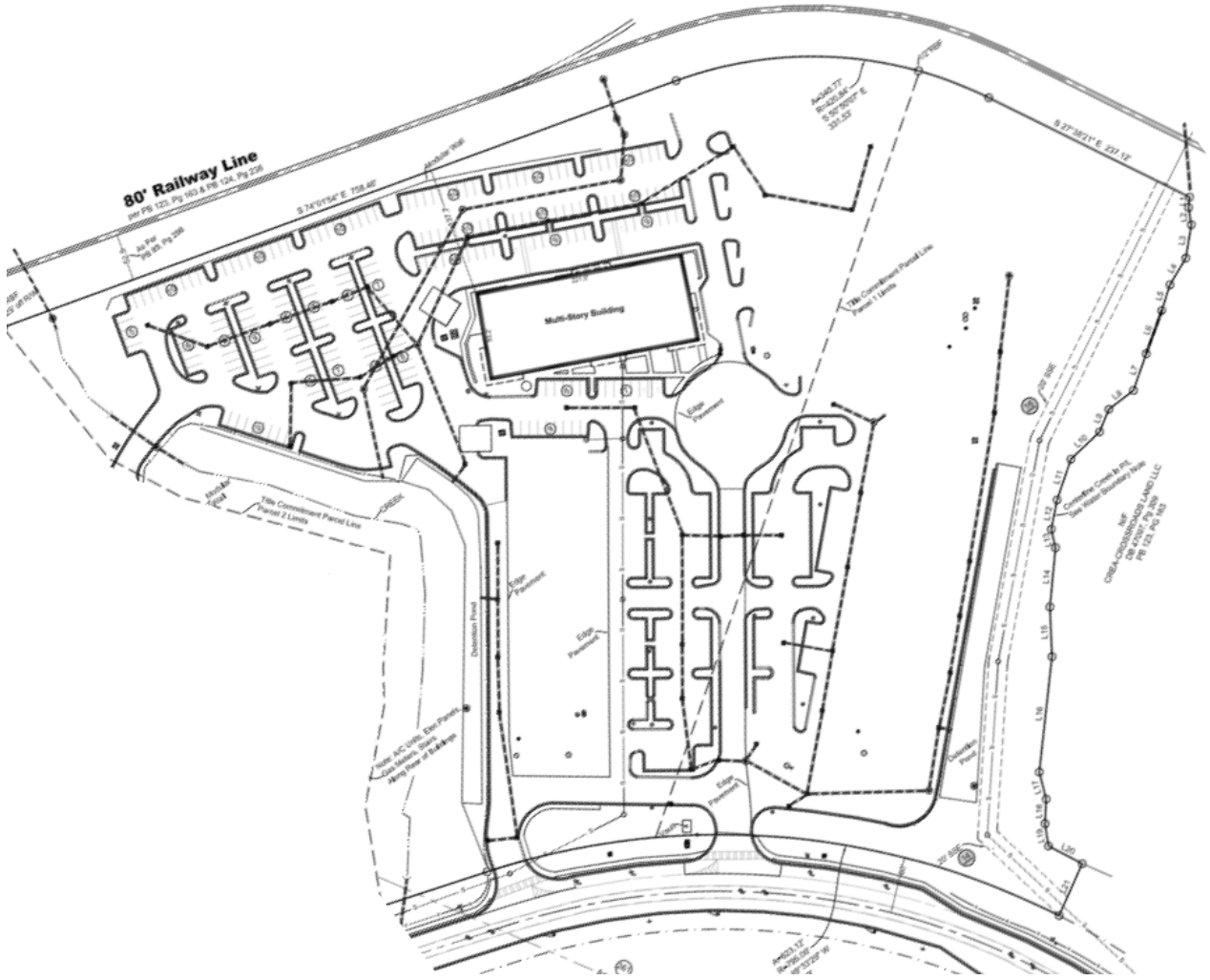
For More Information Contact:

Mr. David M. Nash
Direct: 404-949-9866
Mobile: 404-386-5846
dnash@nashcommercial.com

NASH 
COMMERCIAL

DULUTH PARK INTERNATIONAL

2641 North Berkeley Lake Road
Duluth, Georgia 30096



For More Information Contact:

Mr. David M. Nash

Direct: 404-949-9866

Mobile: 404-386-5846

dnash@nashcommercial.com

NASH 
COMMERCIAL