

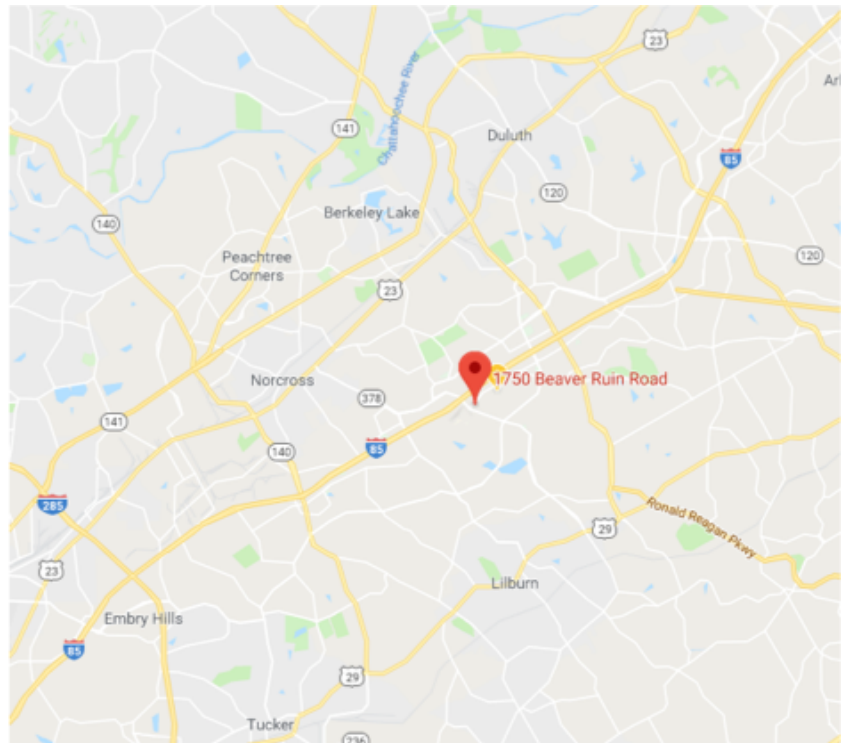


13,625 Square Feet
50 Parking Spots

1750 Beaver Ruin Road, Suite 800 | Norcross, Georgia 30093
Gwinnett Park – Northeast Atlanta

Property Features:

- 13,625 Total Square Feet Available
- 11,946 Square Foot of Office
- 1,679 Square Foot of Warehouse
- 1 Dock High Loading Door
- 1 Ramped Drive-in Door
- 14' Minimum Clear Height
- 3.70/1,000 Sq. Ft. Parking Ratio
- Less Developed Census Tract 504.23
- Tax Credits Up to \$3,500.00 per Qualifying New Job to Georgia



For More Information, Contact:
Mr. David Nash
dnash@nashcommercial.com
404-386-5846



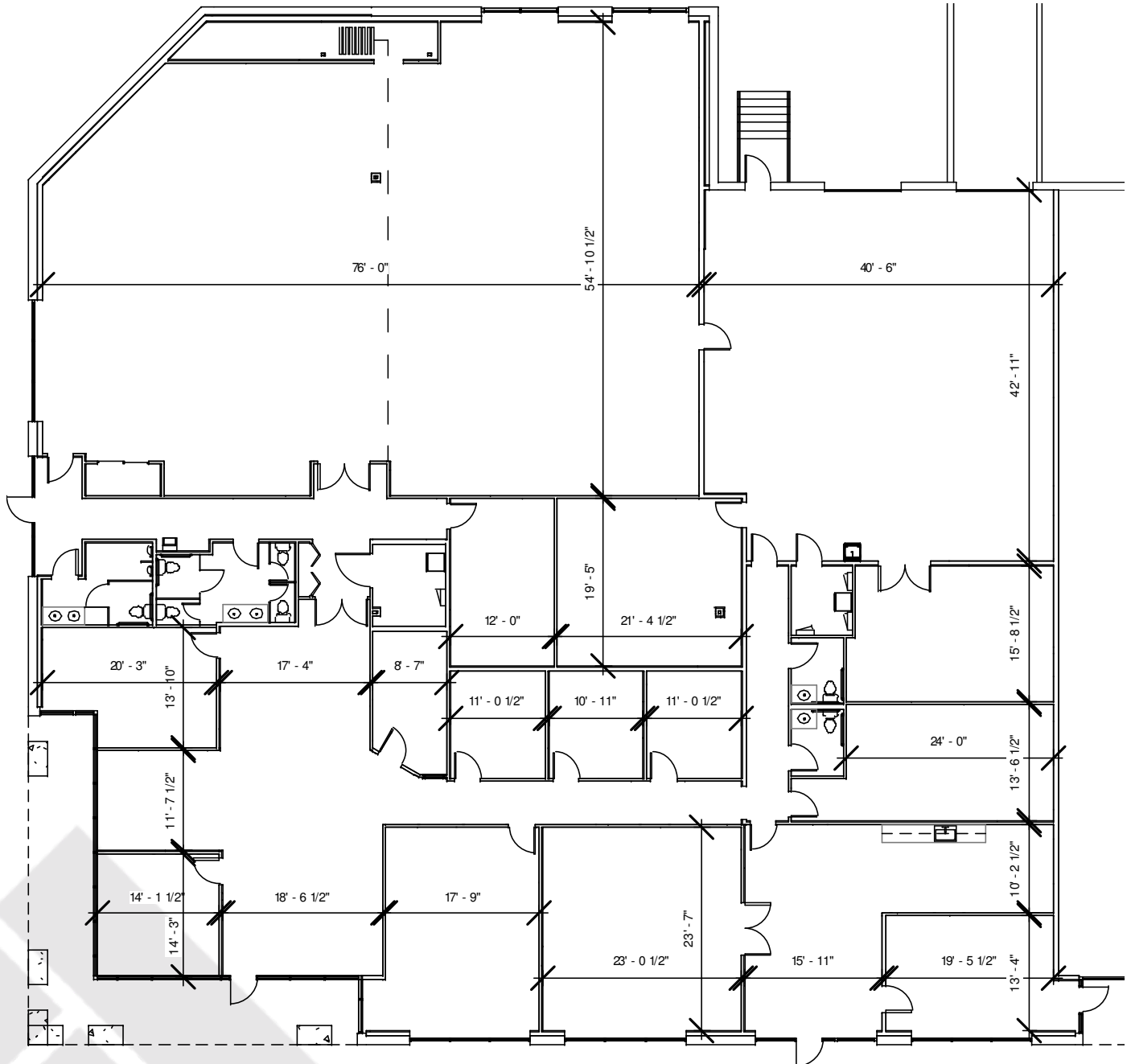
**Property Owned &
Professionally Managed By:**



The information contained herein is believed to be accurate but is not warranted as to accuracy and may change or be updated without notice.

1750 Beaver Ruin Road, Suite 800
Norcross, Georgia 30093

13,625 Square Feet
50 Parking Spots



For More Information, Contact:
Mr. David Nash
dnash@nashcommercial.com
404-386-5846

NASH
COMMERCIAL

Property Owned &
Professionally Managed By:

SPERRY
EQUITIES
A NATIONAL REAL ESTATE INVESTMENT FIRM

The information contained herein is believed to be accurate but is not warranted as to accuracy and may change or be updated without notice.